

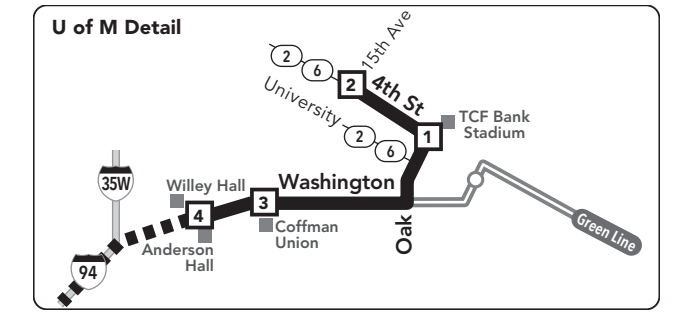
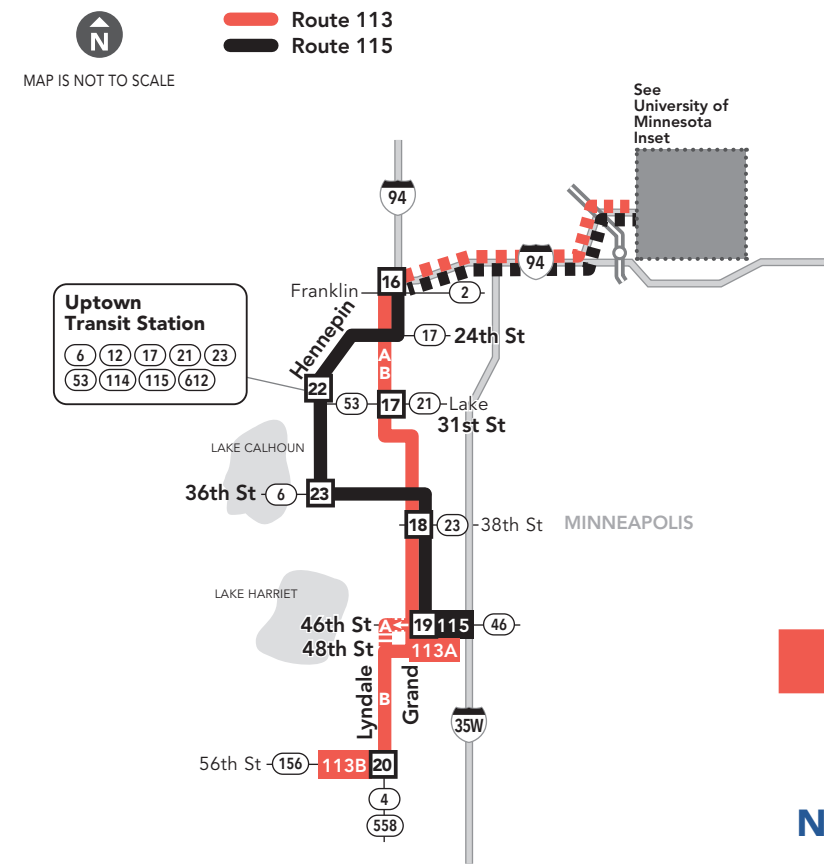
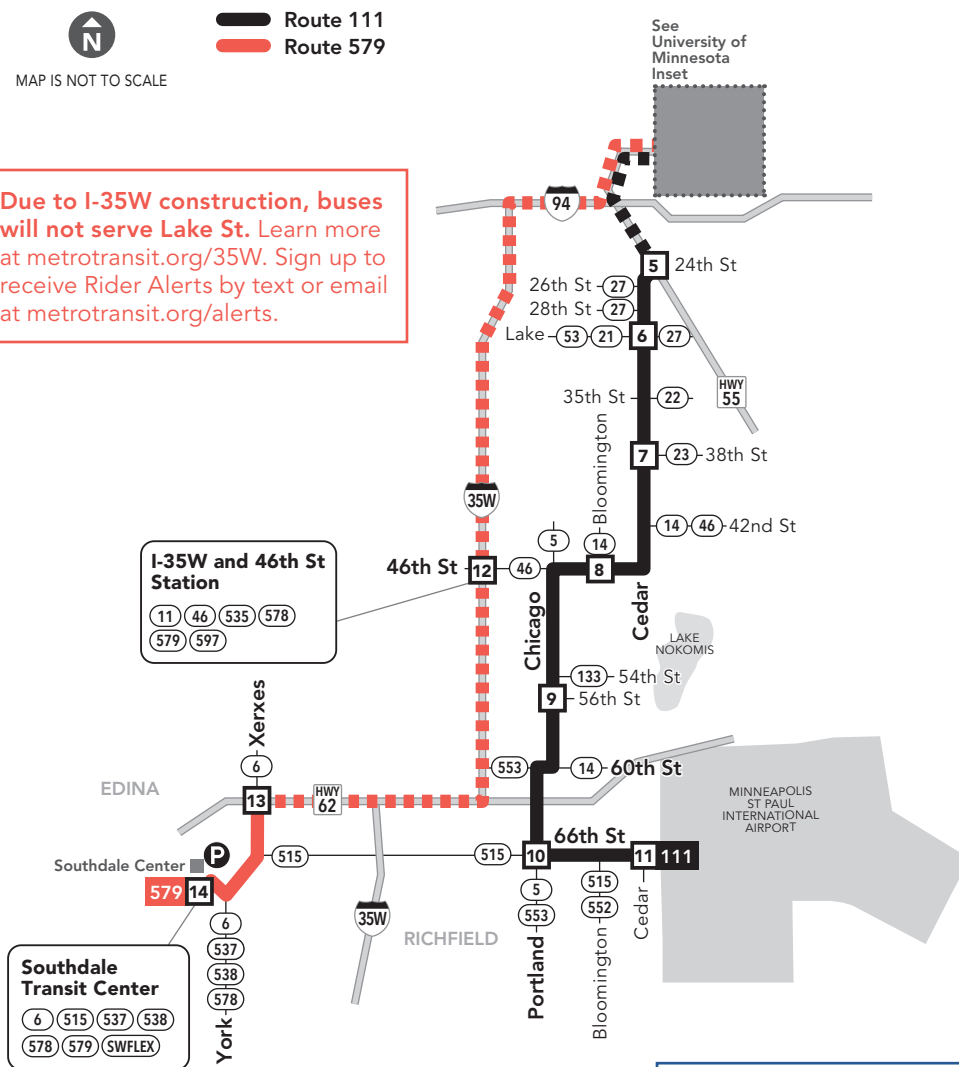
111 113 114 115 579

Effective 8/17/2019

LIMITED STOP/EXPRESS BUS ROUTES

MAJOR DESTINATIONS:

- University of Minnesota**
- 111** Cedar Ave
Chicago Ave
Richfield
- 113** Lyndale Ave
Grand Ave
- 114** Hennepin Ave
Uptown Transit Station
Excelsior Blvd
- 115** Hennepin Ave
Grand Ave
- 579** I-35W and 46th St Station
Southdale Transit Center



PAY EXIT This is a Pay Exit route. On trips leaving downtown or the U of M, pay your fare at your destination. The time you exit the bus determines the fare amount.



612-373-3333 • metrotransit.org

Metro Transit Mobile App

Now you can plan your trip, see arrival information for bus and trains and buy transit tickets all on the go! Download the free app on Google Play or iTunes.

Reading a schedule: a step-by-step guide

- Find the schedule for the **day** of the week and the **direction** you plan to travel.
- Look at the map and find the **timepoints** nearest your trip start and end points. Your stop may be between timepoints.
- Read down the column to see what **time** a bus will depart from a given timepoint. Read across a row to see when the bus will reach another timepoint. If the time is blank, that trip does not serve that timepoint.

Not all stops are shown on this timetable.

Use the timepoints on the map and the schedule to estimate the arrival of your bus. For details, call Transit Information or explore our interactive map and trip planning tools at metrotransit.org.

Park & Ride Locations

Park free at these lots while you commute. No overnight parking.

EDINA

- Southdale Transit Center: York Ave and 66th St W

- 3** Timepoint on schedule
Find the timepoint nearest your stop, and use that column of the schedule. Your stop may be between timepoints.
- Regular Route**
Bus will pick up or drop off customers at any bus stop along this route
- METRO Line and Stations**
METRO trains or buses will pick up or drop off customers at any station along this route.
- Limited Service**
Only certain trips take this route.
- Non-Stop Service**
Bus does not pick up or drop off customers on these route segments.
- 22B** Route Ending Point
Trips with the indicated number/letter end at this point. Number/letter is found in schedules and on bus destination signs.
- B** Route Letter
Indicates which trips travel on this section of the route. Letter is found in schedules and on bus destination signs.
- 22 METRO** Connecting Routes & Metro Lines
See those route schedules for details.
- P** Park & Ride Lot
Park free at these lots while you commute.

Route 111

Monday — Friday

NORTHBOUND from Richfield to the U of M

route number & letter	11	10	9	8	7	6	5	4	3	2
111	6:56	6:59	7:04	7:11	7:17	7:22	7:25	7:30	7:32	7:38
111	8:11	8:14	8:19	8:26	8:31	8:35	8:38	8:43	8:45	8:51

A Trip does not operate during U of M breaks, May Session or Summer Session. Shaded times denote rush-hour service. See fare panel for rush-hour fees.

Monday — Friday

SOUTHBOUND from the U of M to Richfield

route number & letter	1	3	4	5	6	7	8	9	10	11
111	4:43	4:48	4:50	4:56	5:00	5:06	5:11	5:18	5:24	5:28
111	5:40	5:45	5:47	5:52	5:55	5:59	6:03	6:10	6:15	6:19

A Trip does not operate during U of M breaks, May Session or Summer Session. Shaded times denote rush-hour service. See fare panel for rush-hour fees.

Route 579

Monday — Friday

NORTHBOUND from Southdale to the U of M

route number & letter	14	13	12	4	3	2
579	7:06	7:10	7:16	7:24	7:26	7:32
579	7:21	7:25	7:31	7:39	7:41	7:47
579	8:21	8:25	8:30	8:39	8:41	8:47

A Trip does not operate during U of M breaks, May Session or Summer Session. Shaded times denote rush-hour service. See fare panel for rush-hour fees.

Monday — Friday

SOUTHBOUND from the U of M to Southdale

route number & letter	1	3	4	12	13	14
579	3:43	3:48	3:50	4:03	4:09	4:14
579	4:42	4:47	4:49	5:02	5:09	5:14
579	5:42	5:46	5:48	6:00	6:07	6:12

A Trip does not operate during U of M breaks, May Session or Summer Session. Shaded times denote rush-hour service. See fare panel for rush-hour fees.

Route 113

Monday — Friday

NORTHBOUND from Grand Ave/Lyndale Ave to the U of M

route number & letter	20	19	18	17	16	4	3	2
113	6:52	6:57	7:01	7:08	7:14	7:21	7:23	7:29
113	7:03	7:08	7:12	7:19	7:26	7:33	7:35	7:41
113	7:13	7:18	7:22	7:29	7:36	7:43	7:45	7:51
113	8:03	8:08	8:12	8:19	8:26	8:33	8:35	8:41
113	8:13	8:18	8:22	8:29	8:36	8:43	8:45	8:51
113	8:57	9:02	9:06	9:12	9:19	9:25	9:27	9:33
113	9:12	9:17	9:21	9:27	9:34	9:40	9:42	9:48
113	10:26	10:31	10:35	10:41	10:47	10:53	10:55	11:01

A Trip does not operate during U of M breaks, May Session or Summer Session. Shaded times denote rush-hour service. See fare panel for rush-hour fees.

Monday — Friday

SOUTHBOUND from the U of M to Lyndale Ave/Grand Ave

route number & letter	1	3	4	16	17	18	19	20
113B	2:27	2:31	2:33	2:42	2:48	2:55	2:59	3:06
113A	3:38	3:43	3:45	3:55	4:01	4:08	4:12	-
113B	4:10	4:15	4:17	4:28	4:35	4:43	4:47	4:54
113A	4:30	4:35	4:37	4:48	4:55	5:03	5:07	-
113B	4:40	4:45	4:47	4:58	5:05	5:13	5:17	5:24
113B	5:40	5:44	5:46	5:56	6:03	6:10	6:14	6:20
113B	6:10	6:14	6:16	6:25	6:31	6:38	6:42	6:48

A Trip does not operate during U of M breaks, May Session or Summer Session. Shaded times denote rush-hour service. See fare panel for rush-hour fees.

Route 115

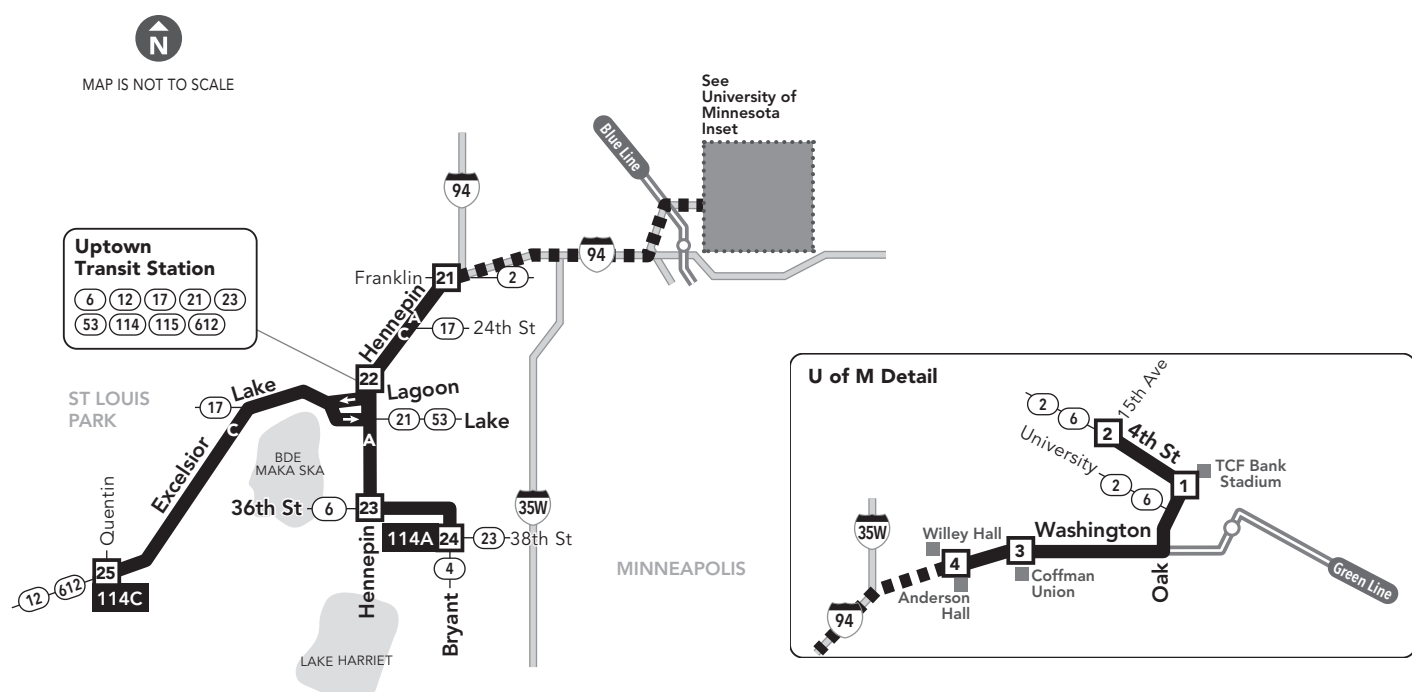
Monday — Friday

SOUTHBOUND from the U of M to Uptown and Grand Ave

route number & letter	1	3	4	16	22	23	18	19
115	6:32	6:36	6:38	6:45	6:54	6:59	7:03	7:06
115	7:04	7:08	7:10	7:17	7:25	7:30	7:34	7:37
115	7:34	7:38	7:40	7:46	7:54	7:58	8:02	8:05
115	8:04	8:08	8:10	8:16	8:24	8:28	8:32	8:35

A Trip does not operate during U of M breaks, May Session or Summer Session. Shaded times denote rush-hour service. See fare panel for rush-hour fees.

Route 114



Monday — Friday

NORTHBOUND from St Louis Park or Uptown to the U of M

route number & letter	38th St and Bryant Ave	Hennepin Ave and 36th St	Excelsior Blvd and Quentin Ave	Hennepin Ave at Transit Station	Hennepin Ave at Uptown	Franklin Ave and Anderson Hall	Coffman Union	4th St and 15th Ave
	24	23	25	22	21	4	3	2
AM								
114	7:01	7:04	—	7:09	7:15	7:23	7:25	7:31
114	—	—	7:06	7:19	7:25	7:33	7:35	7:41
114	7:15A	7:19	—	7:24	7:30	7:38	7:40	7:46
114	7:55A	7:59	—	8:04	8:10	8:18	8:20	8:26
114	—	—	8:06	8:19	8:25	8:33	8:35	8:41
114	8:21A	8:25	—	8:30	8:36	8:43	8:45	8:51
114	9:02A	9:06	—	9:11	9:16	9:22	9:24	9:30
114	—	—	9:20A	9:32	9:37	9:43	9:45	9:51
114	9:31A	9:35	—	9:40	9:45	9:51	9:53	9:59
114	10:33A	10:37	—	10:42	10:47	10:53	10:55	11:01
114	11:39A	11:42	—	11:47	11:52	11:58	12:00	12:06

⚠ Trip does not operate during U of M breaks, May Session or Summer Session.
Shaded times denote rush-hour service. See fare panel for rush-hour fees.

Monday — Friday

SOUTHBOUND from the U of M to Uptown or St Louis Park

route number & letter	Oak St and 4th St	Coffman Union	Willey Hall	Hennepin Ave and Franklin Ave	Hennepin Ave at Transit Station	Excelsior Blvd and Quentin Ave	36th St	38th St and Bryant Ave
	1	3	4	21	22	25	23	24
PM								
114A	2:26A	2:30	2:32	2:41	2:48	—	2:53	2:56
114A	3:31A	3:36	3:38	3:48	3:55	—	4:00	4:03
114A	4:13	4:18	4:20	4:31	4:39	—	4:45	4:49
114A	4:31	4:36	4:38	4:49	4:57	—	5:03	5:07
114C	4:39	4:44	4:46	4:57	5:06	5:20	—	—
114A	5:15A	5:20	5:22	5:33	5:42	—	5:48	5:52
114C	5:35A	5:39	5:41	5:51	5:59	6:12	—	—
114A	6:13A	6:17	6:19	6:28	6:35	—	6:40	6:43

⚠ Trip does not operate during U of M breaks, May Session or Summer Session.
Shaded times denote rush-hour service. See fare panel for rush-hour fees.

- 3** **Timepoint on schedule**
Find the timepoint nearest your stop, and use that column of the schedule. Your stop may be between timepoints.
- Regular Route**
Bus will pick up or drop off customers at any bus stop along this route.
- METRO Line and Stations**
METRO trains or buses will pick up or drop off customers at any station along this route.
- Non-Stop Service**
Bus does not pick up or drop off customers on these route segments.
- 22B** **Route Ending Point**
Trips with the indicated number/letter end at this point. Number/letter is found in schedules and on bus destination signs.
- B** **Route Letter**
Indicates which trips travel on this section of the route. Letter is found in schedules and on bus destination signs.
- 22 METRO** **Connecting Routes & Metro Lines**
See those route schedules for details.

PAY EXIT
This is a Pay Exit route.
On trips leaving downtown or the U of M, pay your fare at your destination. The time you exit the bus determines the fare amount.

Information: 612-373-3333

Metro Transit is the one place for all your transportation information.

Transit Information

Get assistance from a transit expert.

Hours:

Monday – Friday: 6:30 am – 9:00 pm
Saturday – Sunday: 8:00 am – 4:30 pm
Holidays: 8:00 am – 4:30 pm
(Closed Thanksgiving and Christmas Day)

NexTrip

Real-time departure information.

Customer Relations / Lost & Found

570 6th Ave N, Minneapolis, MN 55411
Provide comments and suggestions or check on lost items.

Hours: Mon. – Fri., 7:30 am – 5:30 pm
Closed weekends and holidays

711 Minnesota Relay (hearing impaired)

metrotransit.org

- NexTrip, real-time departure times
- Online Trip Planner
- Interactive map
- Printable schedules
- Go-To Cards: buy, add value, check your balance or enroll in Auto Refill
- Find bicycling, carpooling and vanpooling resources
- Register for Guaranteed Ride Home

How to Ride

BUSES

1. Arrive 5 minutes before the schedule or NexTrip says your trip will depart.
2. Watch for your bus number.
3. Pay your fare as you board, except for Pay Exit routes.
4. Pull the cord above the window about 1 block before your stop to signal the driver.

METRO LINES

1. Arrive 5 minutes before the schedule or NexTrip says your trip will depart.
2. Pay BEFORE you board—touch your card to a reader on the platform or buy a ticket from the machine.
3. Push the blue button to open doors (trains only).
4. Colored METRO lines (Blue, Green, Red) stop at every station. Lettered lines (A & C) stop at stations on demand and when customers are present.

MAKING CONNECTIONS

Transfer between buses and METRO lines for up to 2½ hours with your fare.

Those who try to ride without paying will be charged with a misdemeanor and fined \$180.



All buses and trains have bike racks so you can bring your bicycle along.

Look for instructions on the rack. Lockers are also available for rent. Details at metrotransit.org/bike.

Local Bus & METRO Fares	Rush Hours	Non-Rush Hours
	Mon.-Fri. 6:00-9:00 am 3:00-6:30 pm	
Adults (ages 13-64)	\$ 2.50	\$ 2.00
Seniors (65+), Youth (6-12), Medicare	\$ 2.50	\$ 1.00
Downtown Zone	\$.50	\$.50
Express Bus Fares	Rush Hours	Non-Rush Hours
Adults (ages 13-64)	\$ 3.25	\$ 2.50
Seniors (65+), Youth (6-12), Medicare	\$ 3.25	\$ 1.00
Reduced Fares		
Persons with disabilities	At all times on buses & METRO lines	\$ 1.00
Children 5 and Under		FREE (limit 3) Must ride with a fare-paying customer

Reduced Fares

See rates above. To receive a reduced fare:
Bus – Please tell the bus driver **before you pay your fare** if you qualify for a reduced fare.
METRO lines – be ready to show police officers that you qualify for a reduced fare.

Qualifying ID

Seniors (65+): Show a Minnesota driver's license/state ID with a **T** endorsement.
Medicare card holders: Show a Medicare card along with a MN driver's license/state ID.
Persons with Disabilities: Show your Metro Mobility card or transfer, Metro Transit temporary ID with a photo ID or Minnesota driver's license/state ID with an **A** or **L** endorsement. For information on certification, call Customer Relations at 612-373-3333.

Fare Cards/Passes Buy a variety of passes at Metro Transit service centers, retail outlets or online. Or buy tickets via Metro Transit's Mobile App.

Fareboxes Buses accept U.S. bills and coins. Change is not available.

Transfers All fares (excluding the Downtown Zone) include a transfer. This gives you unlimited rides on buses and METRO lines for 2 ½ hours. Ask for one when you pay your cash fare. Transfers are automatically embedded on fare cards and METRO tickets.

Save with U-Pass!



U-Pass offers University of Minnesota students unlimited rides all semester for one low price.
Details at metrotransit.org/u-pass.

Holiday service operates on New Year's Day, Memorial Day, Independence Day, Labor Day, Thanksgiving and Christmas. Service may be reduced on days before or after Independence Day, Thanksgiving, Christmas or New Year's Day. Look for details at metrotransit.org or in *Connect* on buses and trains prior to these holidays.

This schedule is subject to change. Traffic and weather conditions may delay buses. Get updates on service during severe winter weather at metrotransit.org/snow.

This document is available in alternative formats to individuals with disabilities.
Call 612-349-7365 or visit metrotransit.org.

Go-To Card Retail Locations

A refillable Go-To Card is the most convenient way to travel by transit! Buy a Go-To Card or add value to an existing card at one of these locations or online.

EDINA

- Cub Foods:
6775 York Ave S

MINNEAPOLIS

- Coffman Union:
300 Washington Ave SE
- Cub Foods:
1104 Lagoon Ave
- Wedge Co-op:
2105 Lyndale Ave S

Trip Planner

To:

From:

metrotransit.org