



Station Area Planning

Station Area Working Group Summit | September 12, 2023

Agenda

- Welcome and Introductions
- Purple Line Bus Rapid Transit (BRT) Project Overview
 - BRT route and station design
 - Led by: Metropolitan Council
 - BRT station area planning
 - Led by: Ramsey County
 - BRT station area plan approval and implementation
 - Led by: City of Saint Paul; Capitol Area Architectural and Planning Board
- Station Area Working Group Role
- Hopes + Fears Activity
- Goal Setting
- Next Steps

Welcome and Introductions

Denetrick Powers | Community Engagement Lead

Purple Line BRT Project Overview – Route and Station Design

Colin Owens | Purple Line BRT Community Outreach Coordinator

Stephen Smith | Purple Line BRT Deputy Project Manager



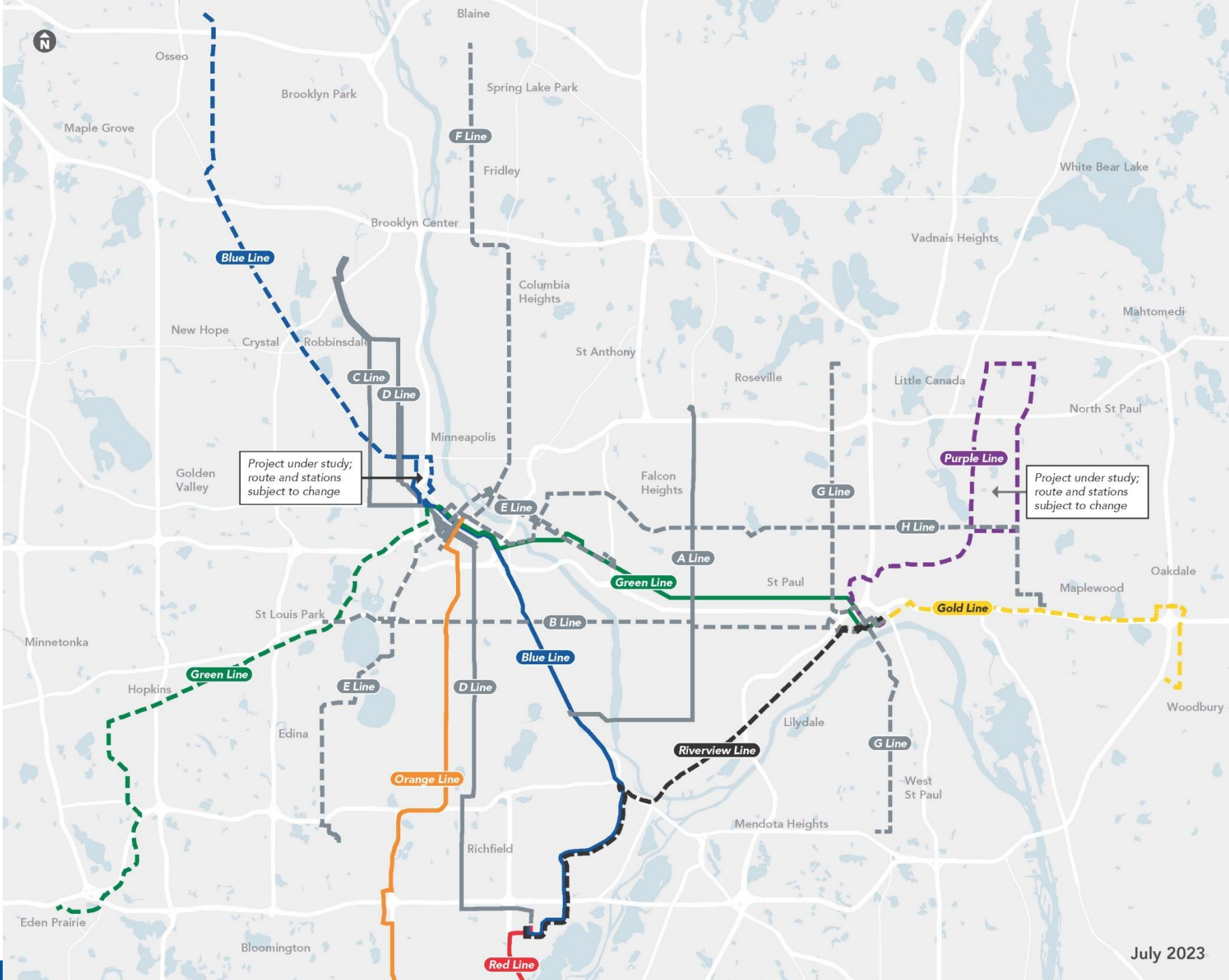
Future Transit

Current METRO network

- A Line
- C Line
- D Line
- Blue Line
- Green Line
- Orange Line
- Red Line

Planned METRO network

- Planned BRT
- Gold Line
- Purple Line
Project under study; route and stations subject to change.
- Green Line Extension
- Blue Line Extension
Project under study; route and stations subject to change.
- Riverview Line

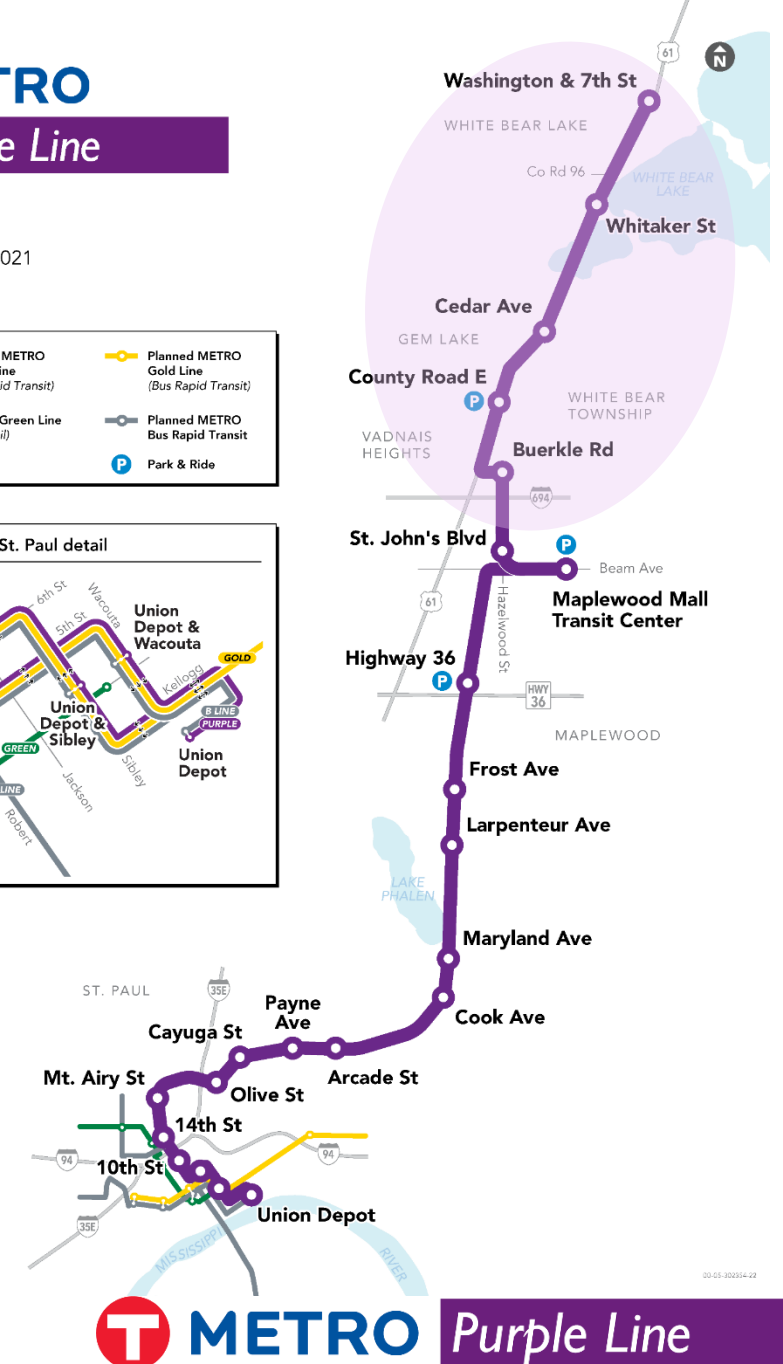
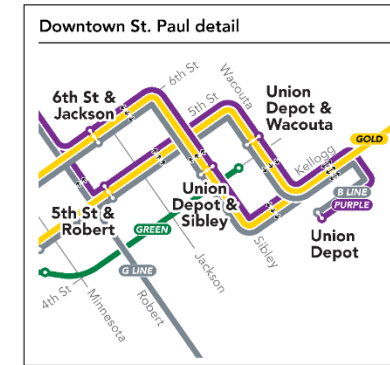
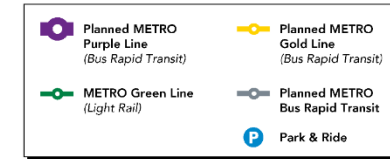


Evolution of Purple Line BRT

- First "Locally Preferred Alternative":
 - Identified in May 2017
 - Started at Union Depot in Saint Paul
 - Ended in Downtown White Bear Lake
 - Portion of route in purple circle was removed after White Bear Lake pulled support in March 2022

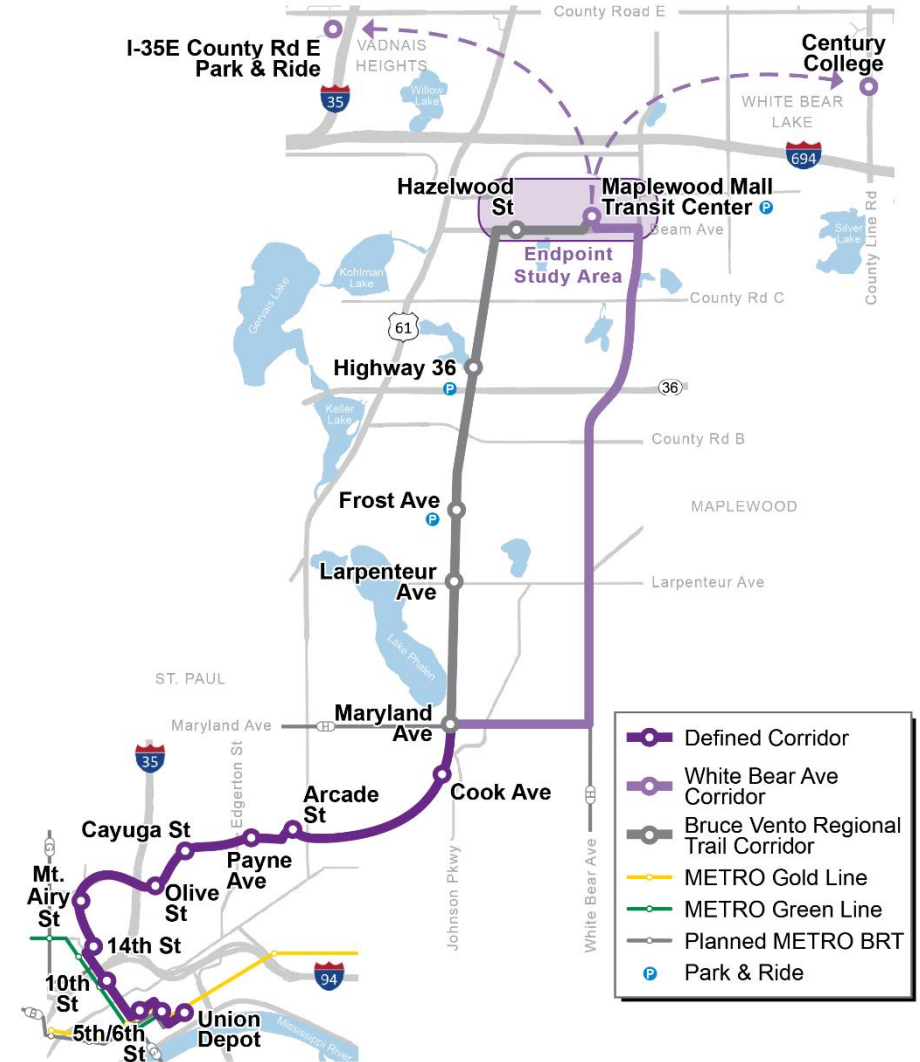
METRO Purple Line

December 2021



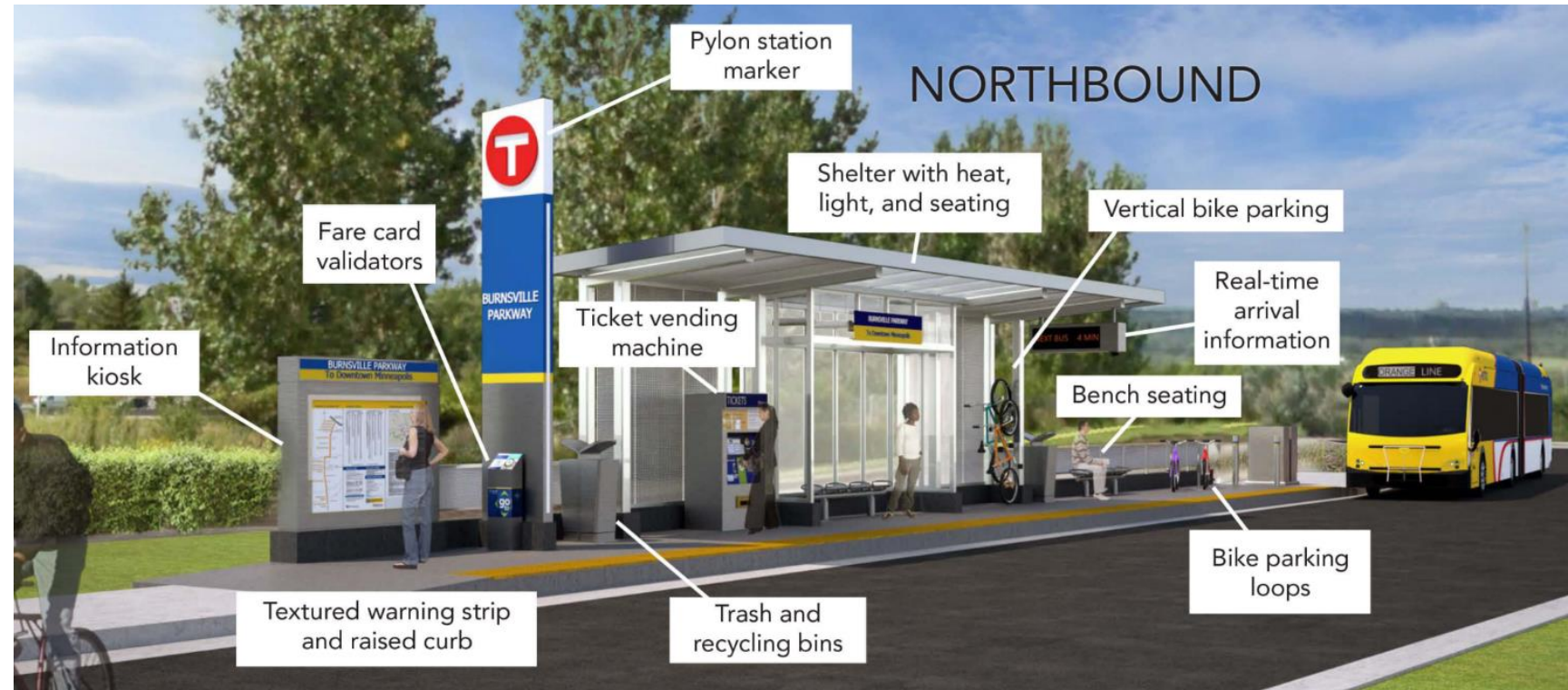
Evolution of Purple Line BRT

- Dark Purple:
 - Union Depot to Cook Ave.
 - Has stayed the same since May 2017
- Grey:
 - Bruce Vento Regional Trail Corridor
 - Original route, now ending at Maplewood Mall Transit Center
- Light Purple:
 - New route alternative along Maryland Ave. and White Bear Ave.
 - Under evaluation over the next year



What is Bus Rapid Transit (BRT)?

- More frequent service
 - every 10-15 minutes
- Faster ride
 - pay before you go, raised platforms, fewer stops, priority at traffic lights
- Stations with extra features
 - heat, lighting, bike racks
- Specialized, electric buses



Features that Define "Dedicated" Bus Rapid Transit

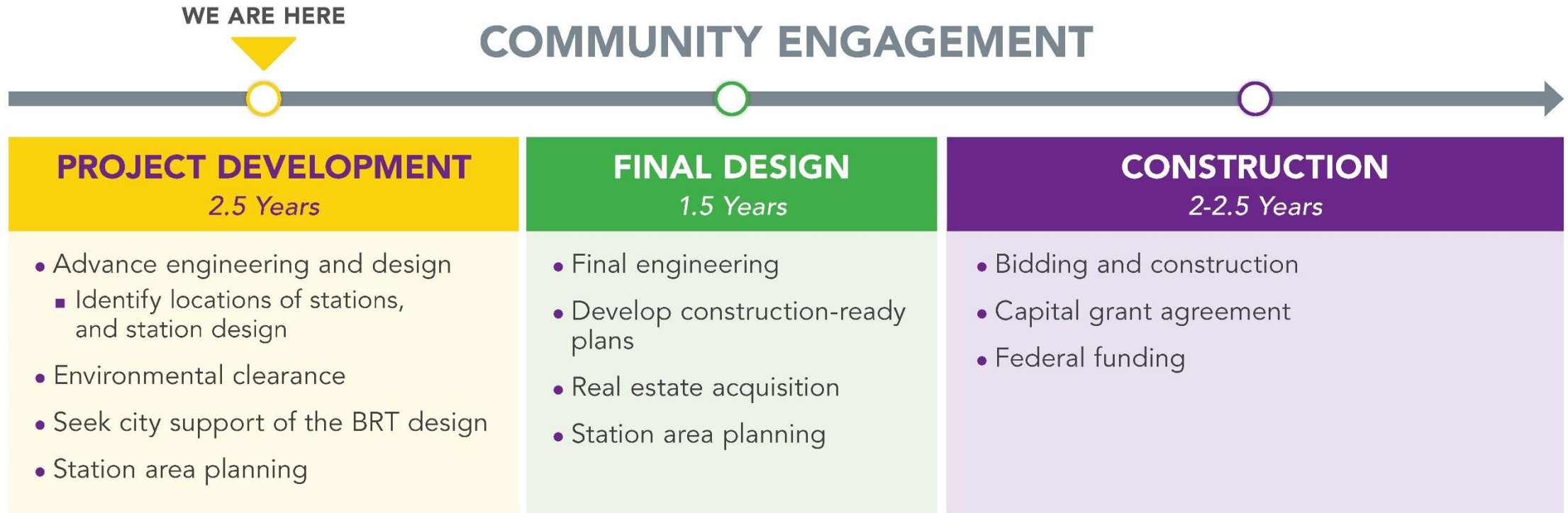
- **Bus-only lanes:** Buses can travel faster and more reliably
- **Pay before you go:** Riders pay their fare at the station, instead of on the bus
- **Priority at traffic lights:** Buses receive priority at intersections
- **Raised Platform Boarding:** Riders of all abilities can board easier with 10" high platform



Purple Line Purpose and Needs

- Purpose: To provide transit service that:
 - satisfies the long-term regional mobility and accessibility needs for businesses and the traveling public
 - supports sustainable development within the corridor area
- Needs:
 - Serving the needs of people who rely on transit
 - Meeting increasing demand for reliable, high-frequency transit
 - Planning for sustainable growth and development
 - Expanding multimodal travel options

Project Schedule



BRT projects are complex and unforeseen challenges arise. Schedules and timelines are subject to change.

Contact Us

For more information:

www.metrotransit.org/purple-line-project

METRO Purple Line Project Office staff:

Stephen Smith

Deputy Project Manager

stephen.smith@metrotransit.org

Liz Jones

Community Outreach & Engagement Lead

elizabeth.jones@metrotransit.org

Purple Line BRT Station Area Planning

Emma Lucken | Station Area Planning Project Manager

Station Area Planning:

- Focuses on use of land within ½ mile of transit stations.
- Identifies ways to make it safer to walk and bike to transit stations.
- Supports development of housing and businesses near transit stations.



Key Questions: Access to stations

- How can we improve the area to make the station easy to access and connect to?
- Is the station physically connected to safe walking and biking paths?
 - What are the conditions of the sidewalks surrounding the station?
 - Which sidewalks or street crossings need to be safer?
- Who is using existing public transit and bike paths in the station area?

Key Questions: Development

- How can design make the physical station area welcoming, visible, and safe?
- What types of new development (housing, stores, etc.) will support the needs of those who live and work near the station, both now and in the future?
- What properties in your neighborhood would you like to see redeveloped?

What is the outcome of the Station Area Planning process?

- Recommendations for policies and guidelines that:
 - Serve the needs of existing residents, future residents, and employers.
 - Communicate the goals of the surrounding community.
 - Center the needs of people of color and low-income residents.
 - Inform where future investment should take place.

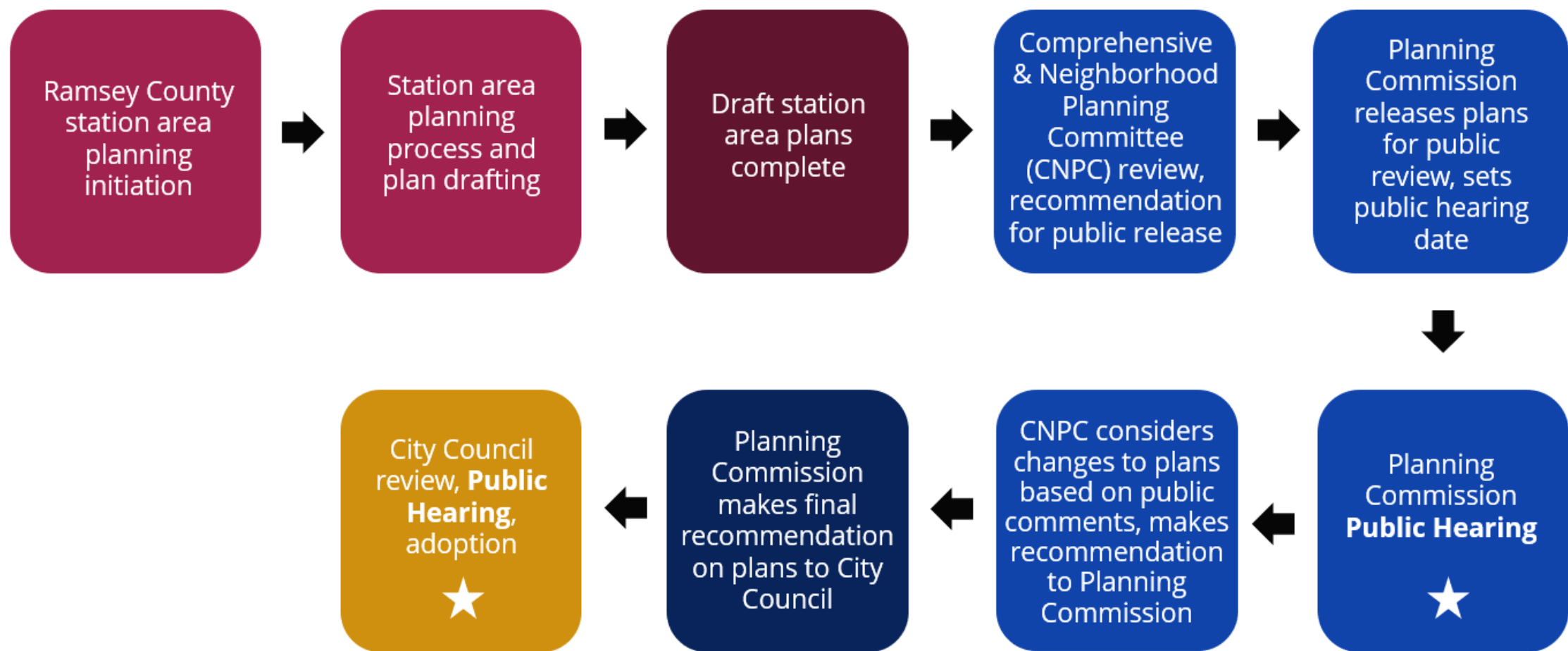
- These recommendations inform the Station Area Plans.

Purple Line BRT Station Area Planning – Plan Approval and Implementation

Emma Brown | City of Saint Paul



City of Saint Paul Station Area Plan Adoption Process



Station Area Working Group Role

Denetrick Powers | Community Engagement Lead

In your Station Area Working Groups, you will help us understand:

- neighborhood needs and opportunities (businesses, housing, green space)
- what will help pedestrians and bikers feel safe
- how vacant buildings and land should be used in the future
- what should be preserved in the neighborhood

Hopes + Fears Activity

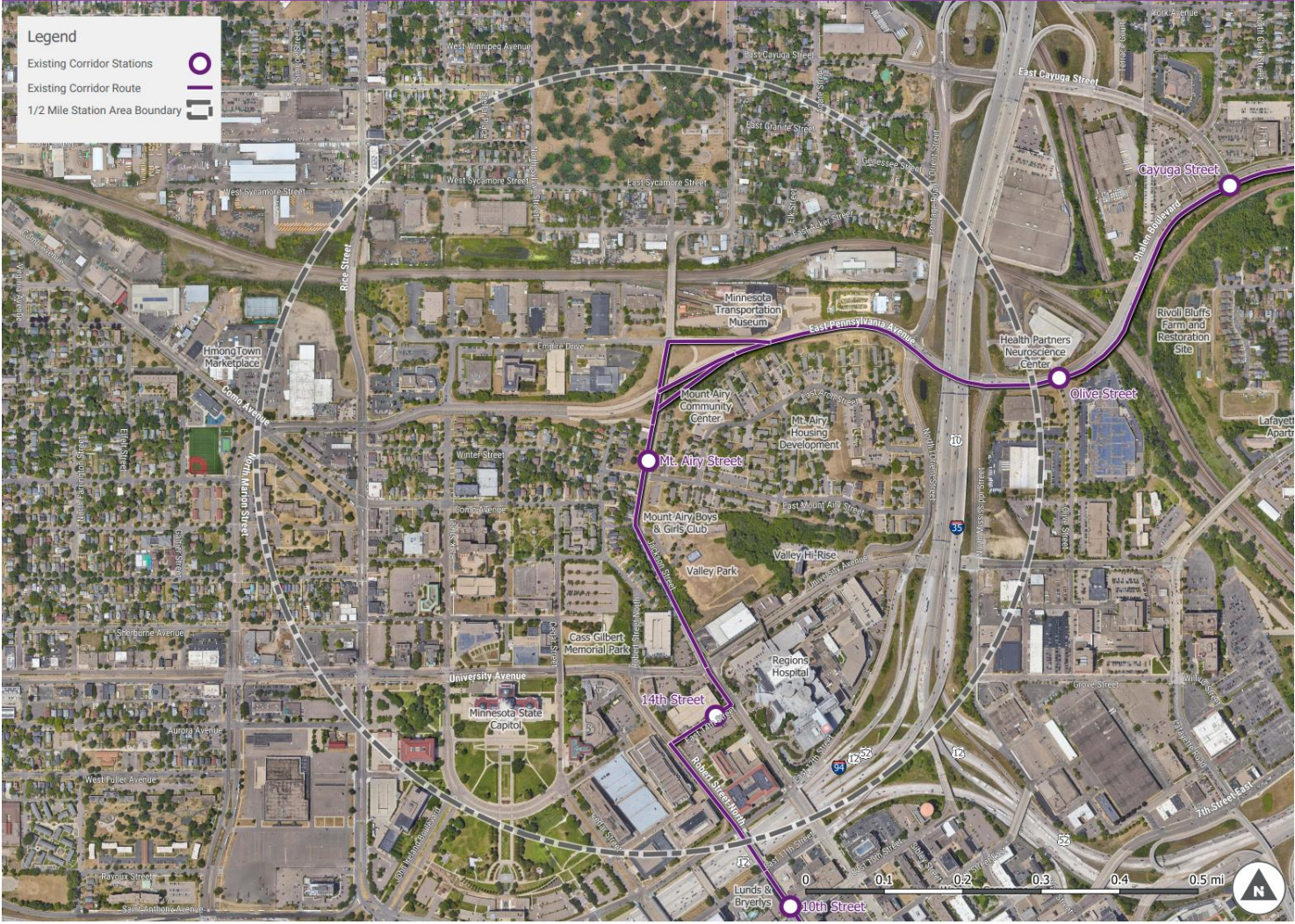
Denetrick Powers | Community Engagement Lead

What are your hopes and fears about your neighborhood changing?

- Directions
 - Review the station area map at your table.
 - Take 5 minutes to write down your hopes, using the post-it notes and pens.
 - Take 5 minutes to write down your fears.
 - Take 10 minutes to share your hopes and fears with the large group.

Station Area Map Introduction

Mt. Airy Street Purple Line BRT Station Area



Goal Setting

Denetrick Powers | Community Engagement Lead

Station Area Working Group Goals

- Take 10 mins to discuss at your table the following questions:
 - What do you hope to achieve as a participant of the Station Area Planning process?
 - How can we support your understanding and learning during this process?

Next Steps

Denetrick Powers | Community Engagement Lead

Where do we go from here?

- First round of working group meetings October 2 – 20, 2023
- Broader engagement and survey October – November, 2023
- Second and third working group meetings in 2024
 - (tentatively January and June)

Thank You!

For more information:

www.metrotransit.org/purple-line-station-area-planning

METRO Purple Line Station Area Planning staff:

Emma Lucken

Station Area Planning Project Manager

emma.lucken@co.ramsey.mn.us

Denetrick Powers

Community Engagement Lead

powers@neopartners.com