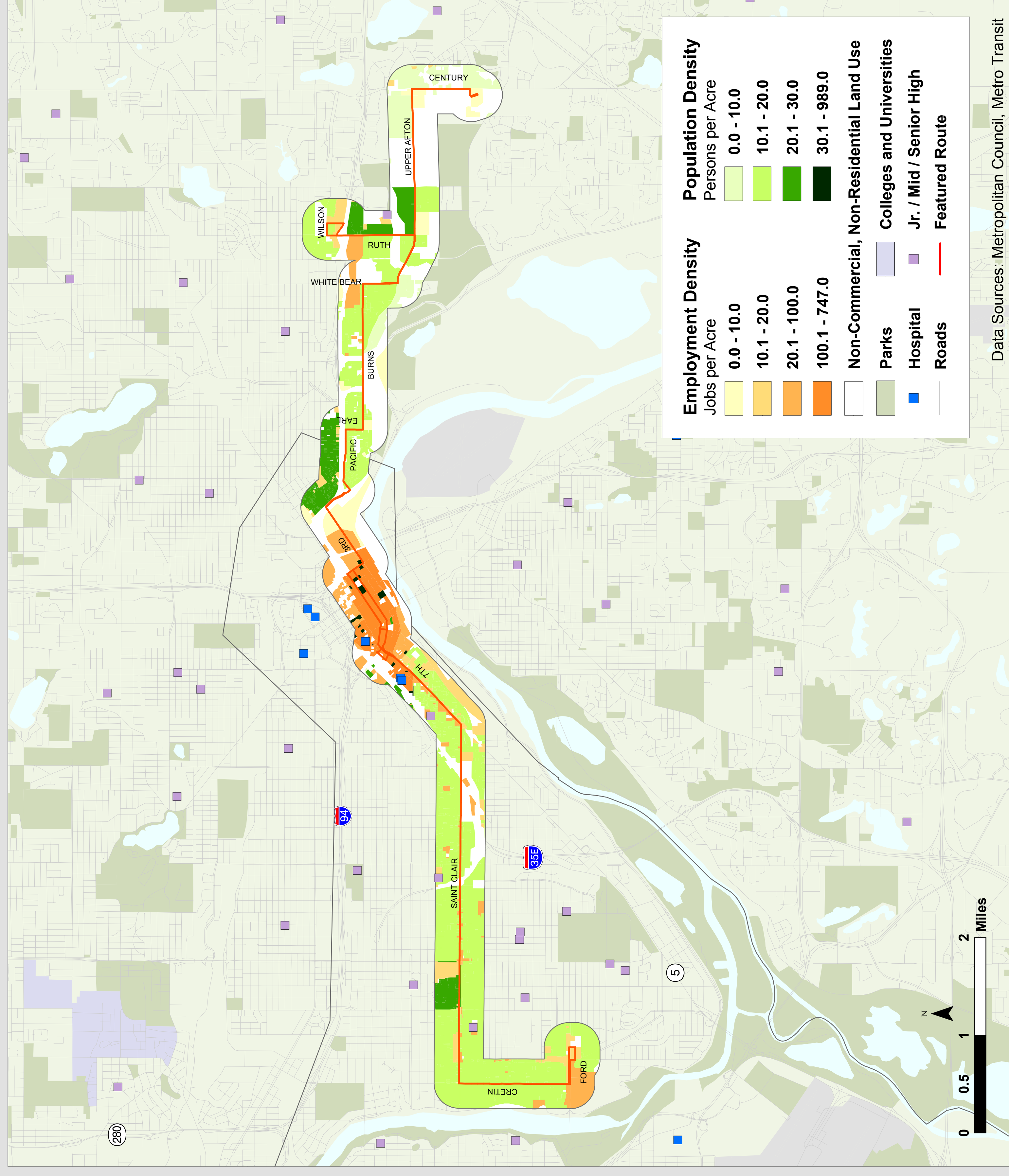
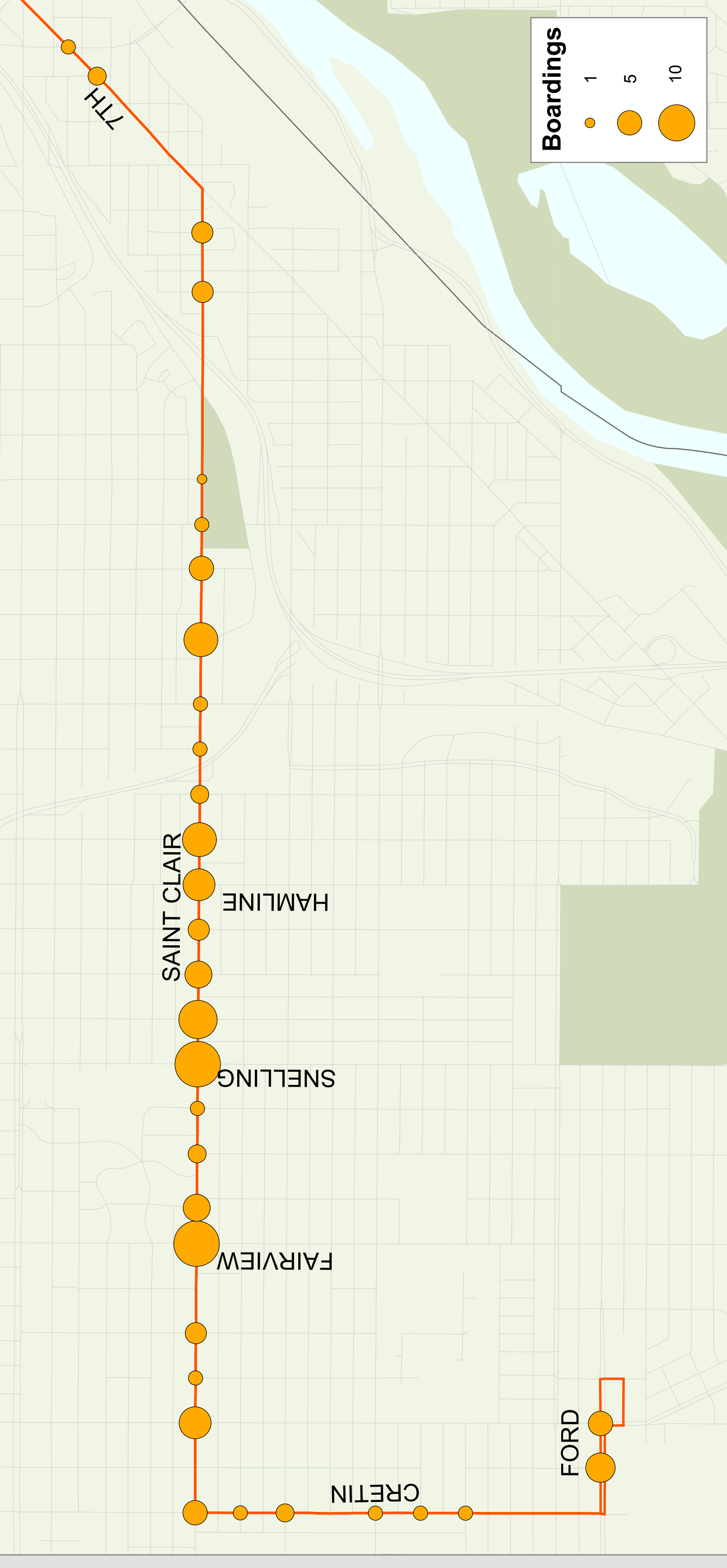


Route 70

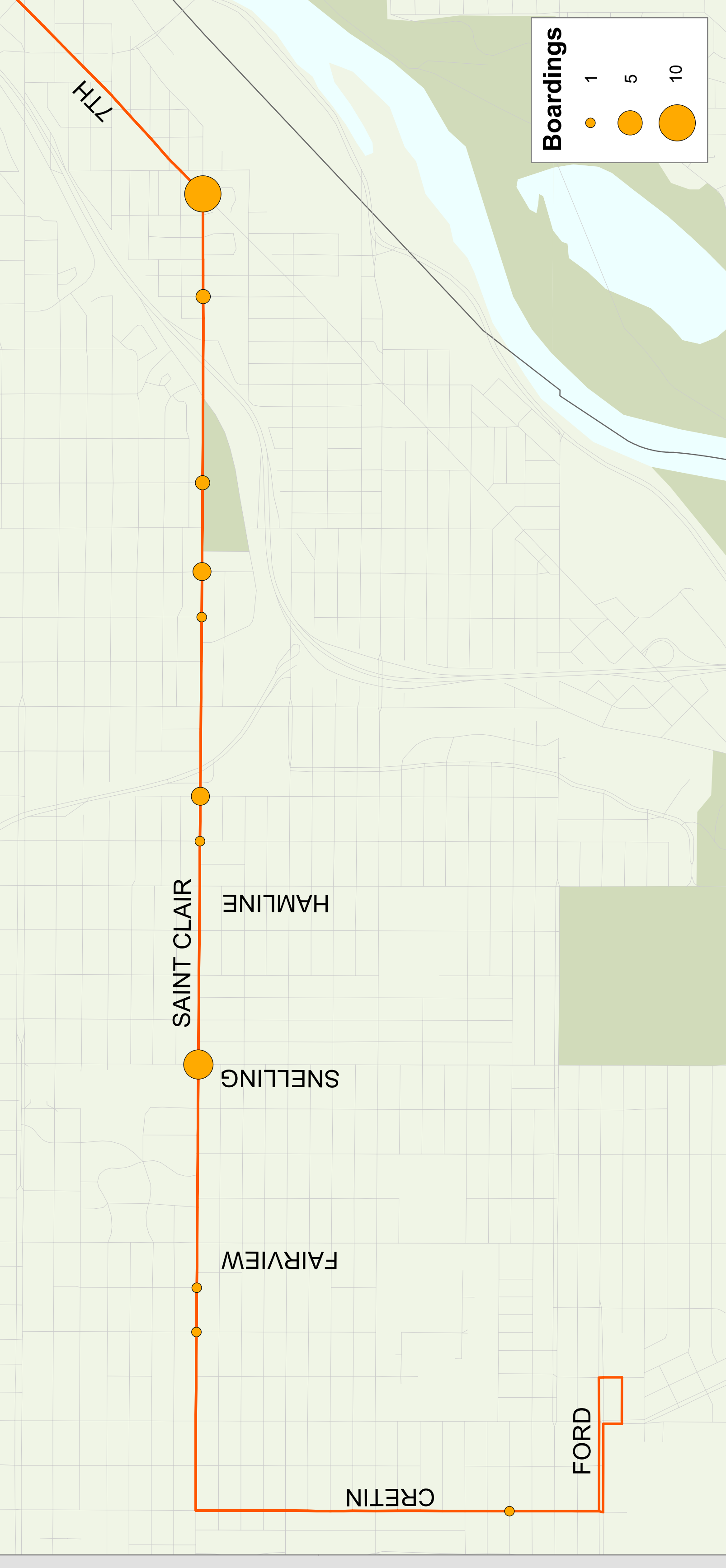
Metro Transit



Eastbound Boardings -- Weekday Averages by Stop



Westbound Boardings -- Weekday Averages by Stop



Route Description

Serves Cretin Ave, St. Clair Ave, 7th St W, and Burns Ave.

Destinations Served

Highland Park, Downtown St. Paul, Sun Ray Center, Ramsey County Correctional Facility.

Route Area Demographic Statistics

Population (persons)	44,053
Residential Density (persons/acre)	17
Employment (# of jobs)	70,619
Employment Density (jobs/acre)	70

Prevailing Service Frequencies

	Weekday					Sat	Sun
	AM	MID	PM	EVE	OWL		
EB	20	30	20	60	-	60	60
WB	20	30	20	60	-	60	60

v: variable

Span of Service

	Weekday	Saturday	Sunday
Current	4:25am - 11:39pm	5:22am - 1:38am	9:02am - 6:59pm

Service Performance

Unlinked Boardings	Passengers per Hour	Subsidy per Passenger
Weekday	26	(\$3.75)
Saturday	21	(\$3.78)
Sunday	26	(\$2.99)