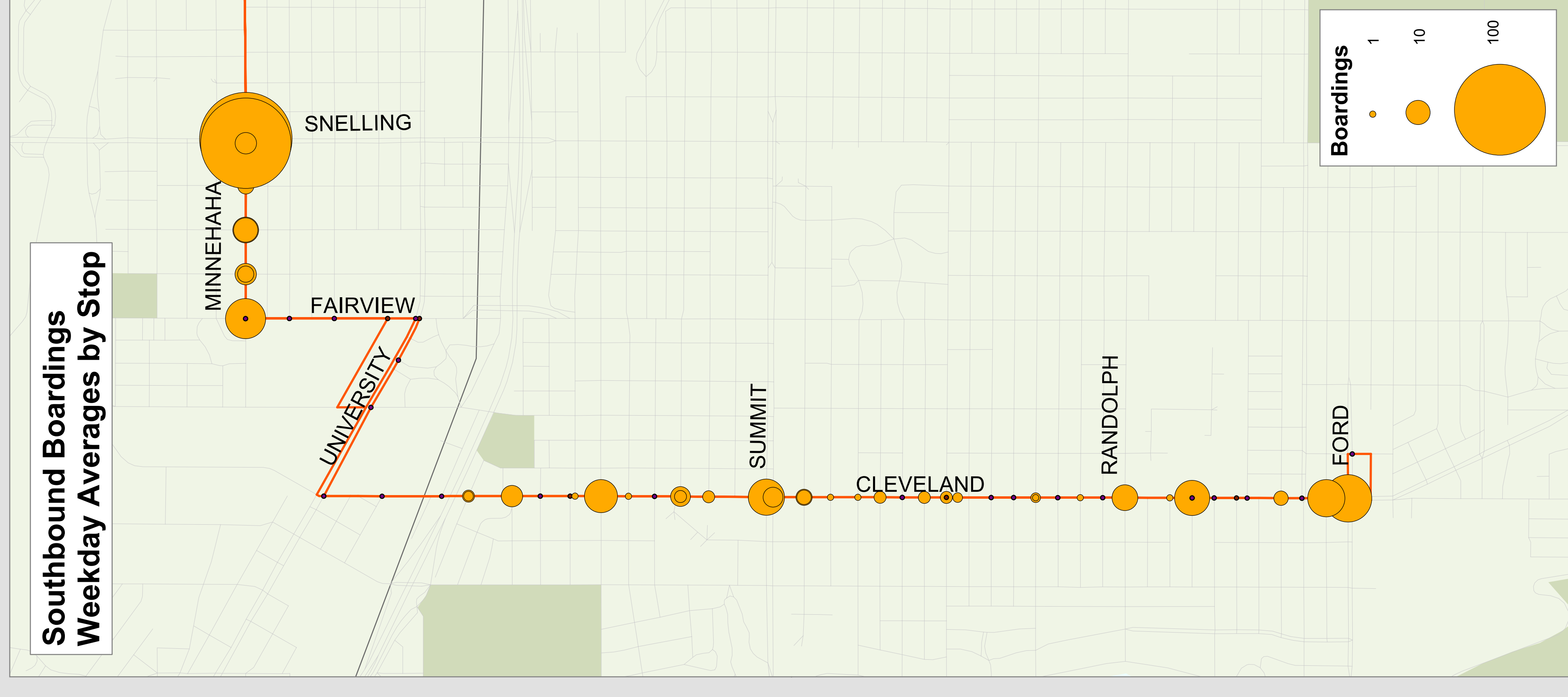
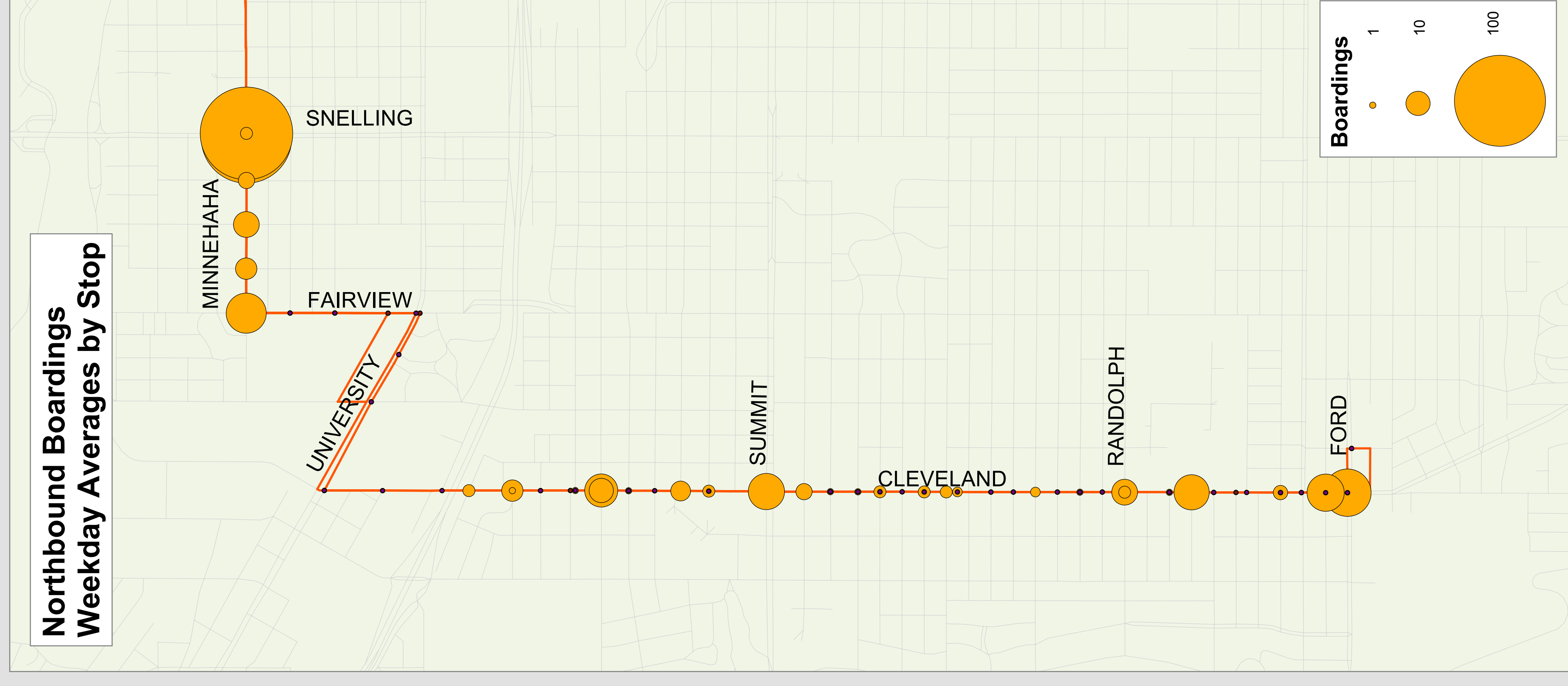
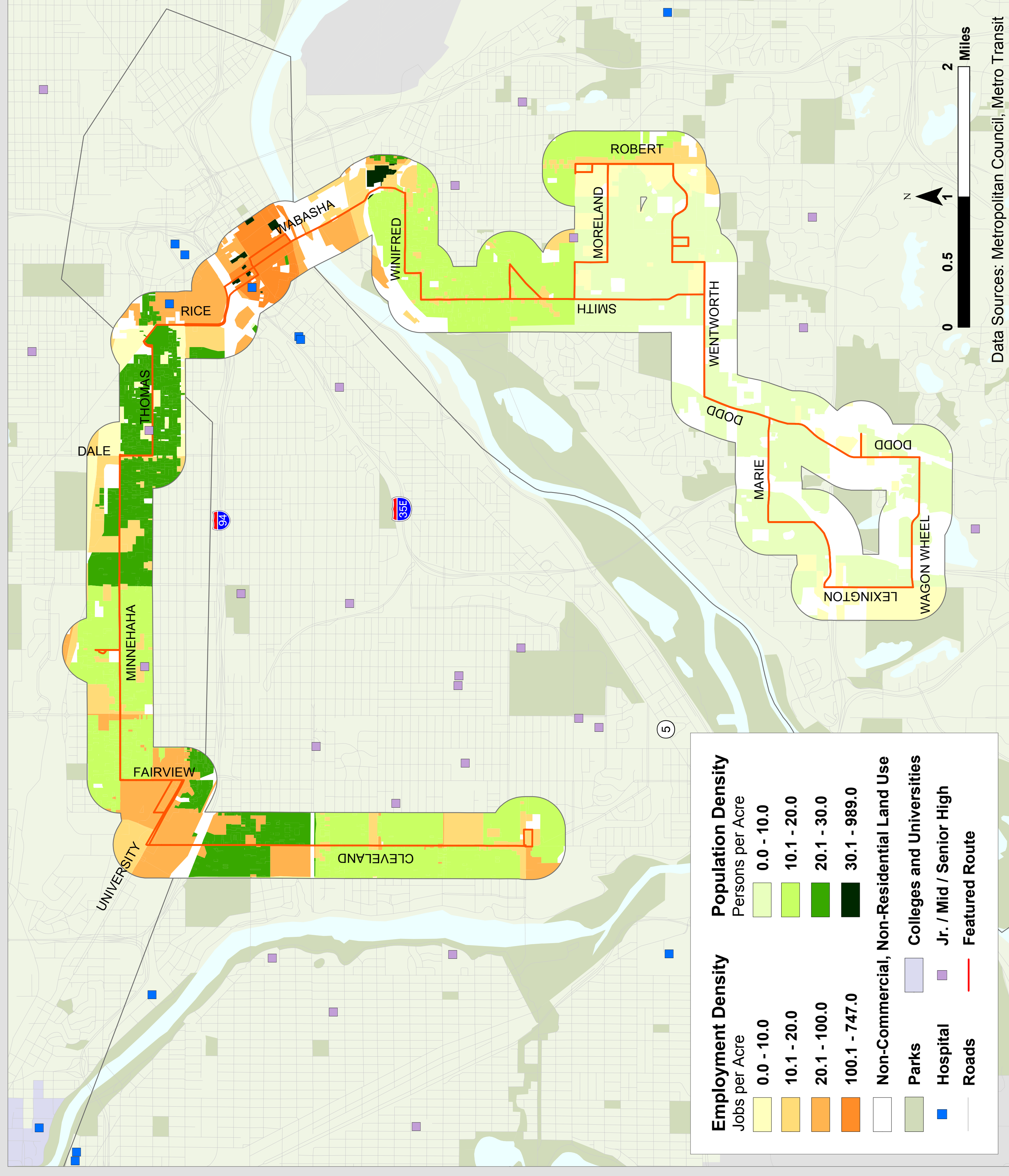


Route 67

Metro Transit



Route Description

Serves Cleveland Ave, Minnehaha Ave, Thomas Ave, Wabasha St, Winifred St, Smith Ave, and Dodd Rd.

Destinations Served

Highland Park, University of St. Thomas, Downtown St. Paul, West St. Paul, Signal Hills Shopping Center, Mendota Heights, Parkview Plaza.

Prevailing Service Frequencies

	Weekday					Sat	Sun
	AM	MID	PM	EVE	OWL		
NB	15-20	30	15-20	60	-	30-60	60
SB	15-20	30	15-20	60	-	30-60	60

v: variable

Span of Service

	Weekday	Saturday	Sunday
Current	5:21am - 12:40am	5:32 - 10:39pm	8:32am - 10:23pm

Service Performance

	Unlinked Boardings	Passengers per Hour	Revenue per Passenger	Subsidy per Passenger
Weekday	207	26	(\$2.78)	
Saturday	95	15	(\$4.34)	
Sunday	50	18	(\$3.69)	

M-67

Route Area Demographic Statistics

Population (persons)	59,651
Residential Density (persons/acre)	15
Employment (# of jobs)	69,151
Employment Density (jobs/acre)	38