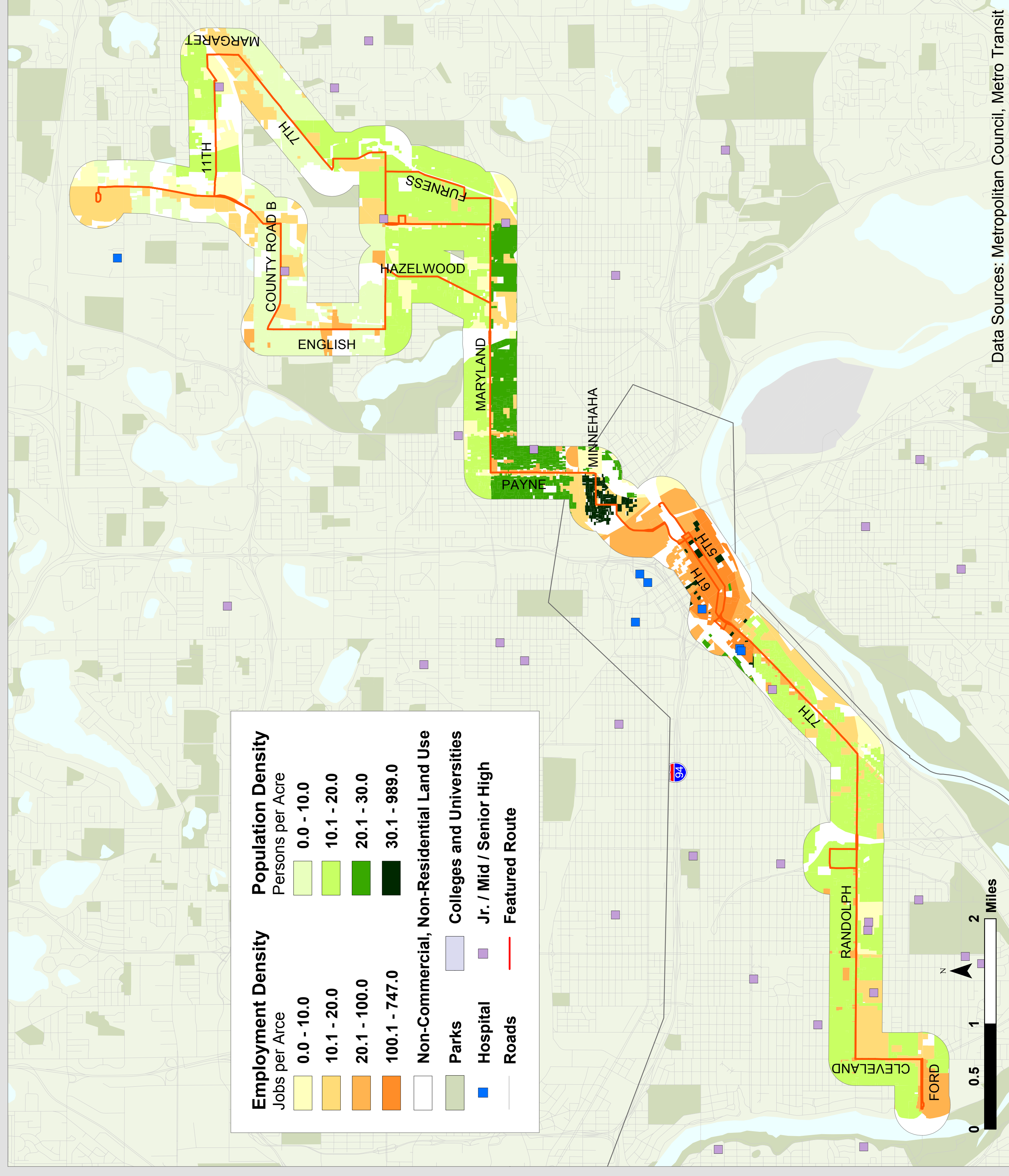
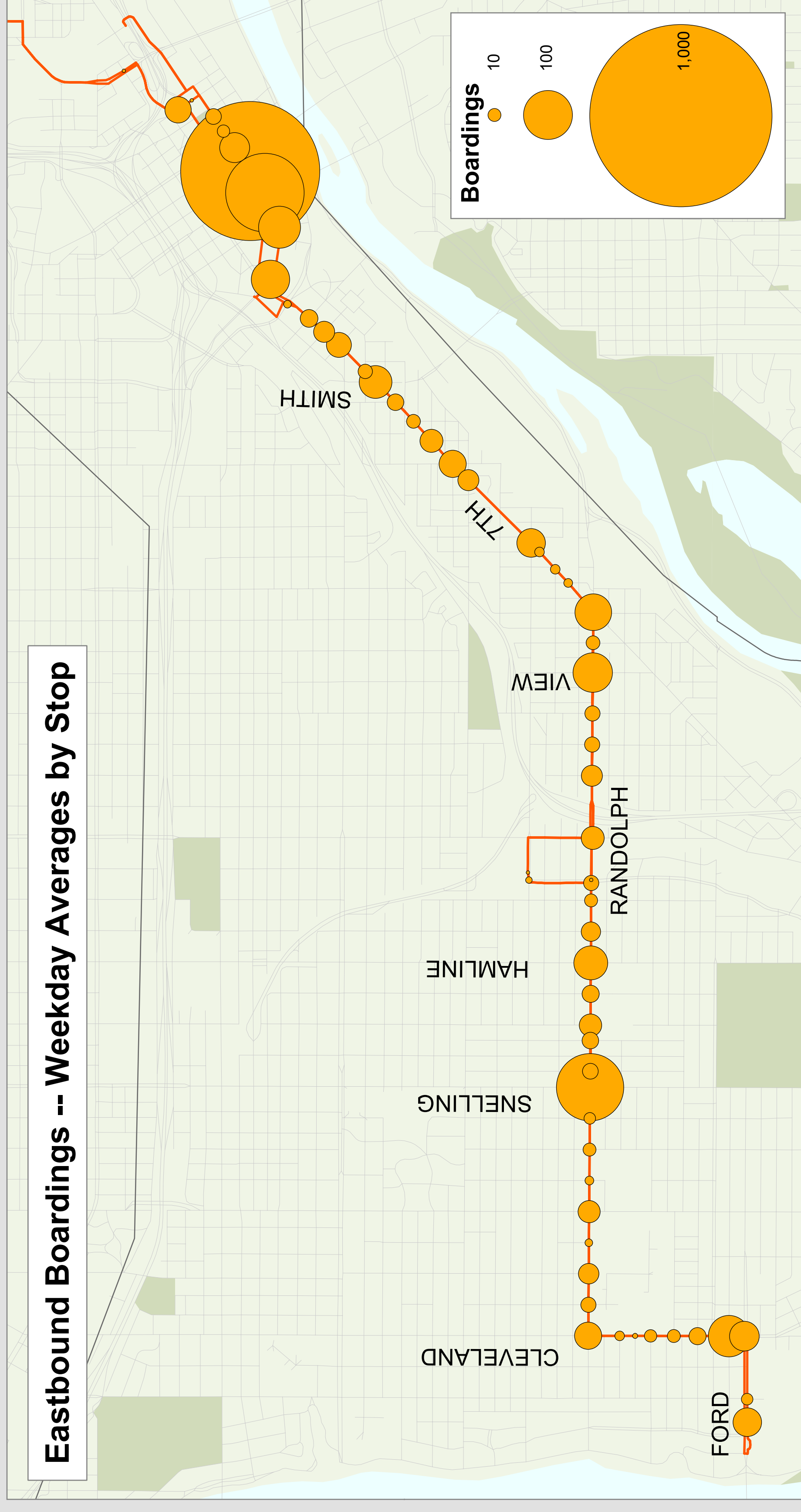


# Route 64

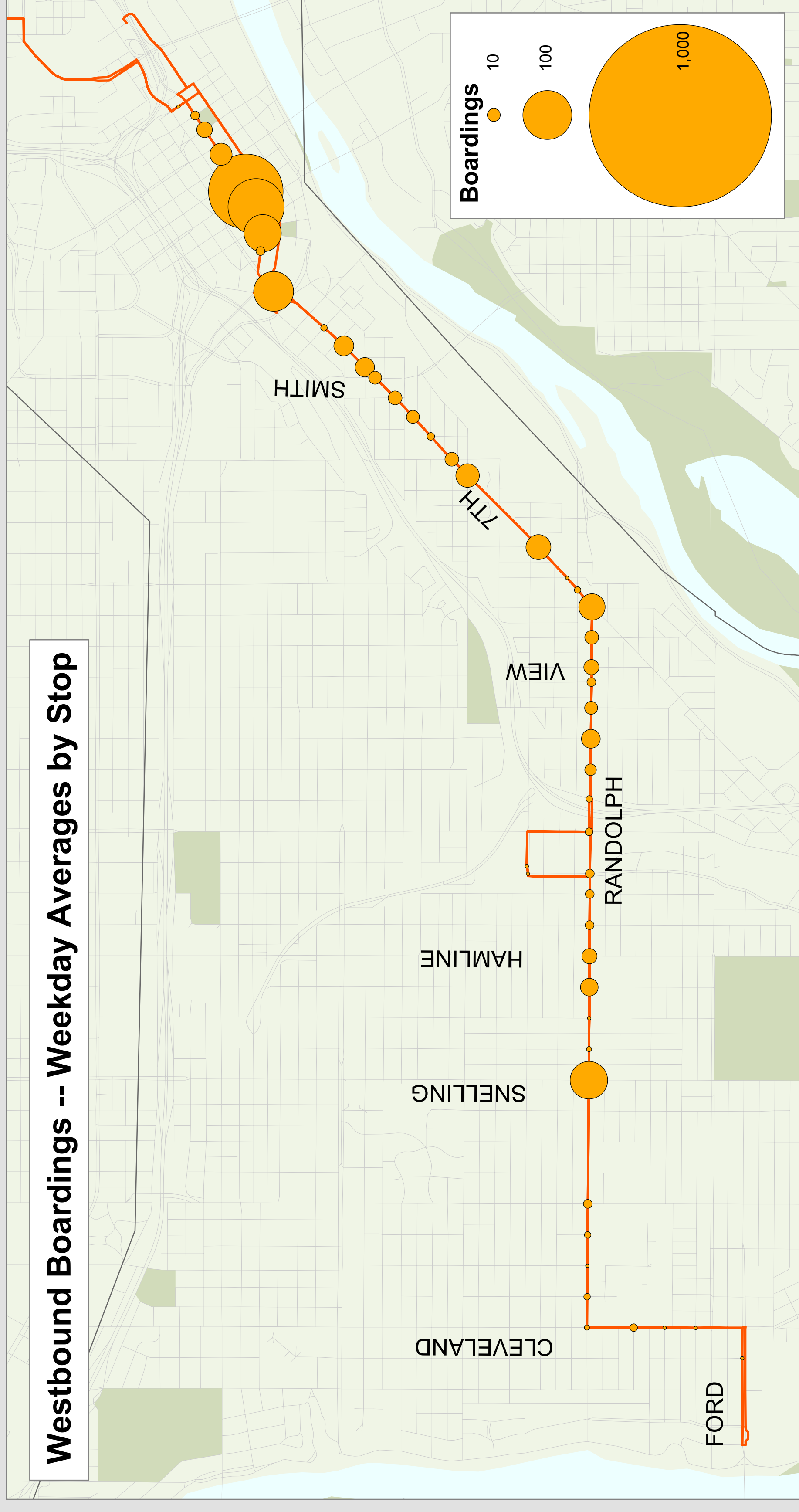
# Metro Transit



Eastbound Boardings -- Weekday Averages by Stop



Westbound Boardings -- Weekday Averages by Stop



## Route Description

Serves Randolph Ave, West 7th St, Payne Ave, Maryland Ave, Prosperity Ave, English St, 11th Ave, and White Bear Ave.

## Destinations Served

Highland Park, Ford Plant, College of St. Catherine, Downtown St. Paul, Hillcrest Shopping Center, Maplewood Mall.

## Prevailing Service Frequencies

	Weekday						Sat	Sun
	AM	MID	PM	EVE	OWL			
NB	7-15	15	7-15	30	-		60 v	
SB	7-15	15	7-15	30	-		60 v	

v: variable

## Span of Service

	Weekday	Saturday	Sunday
Current	4:31am - 1:30am	4:30am - 1:40am	4:34am - 1:21am

## Service Performance

	Unlinked Boardings	Passengers per Hour	Revenue per Passenger	Subsidy per Passenger
Weekday	2,114	36	(\$1.59)	
Saturday	1,672	14	(\$1.89)	
Sunday	1,072	38	(\$1.62)	

## Route Area Demographic Statistics

Population (persons)	61,623
Residential Density (persons/acre)	15
Employment (# of jobs)	87,837
Employment Density (jobs/acre)	39