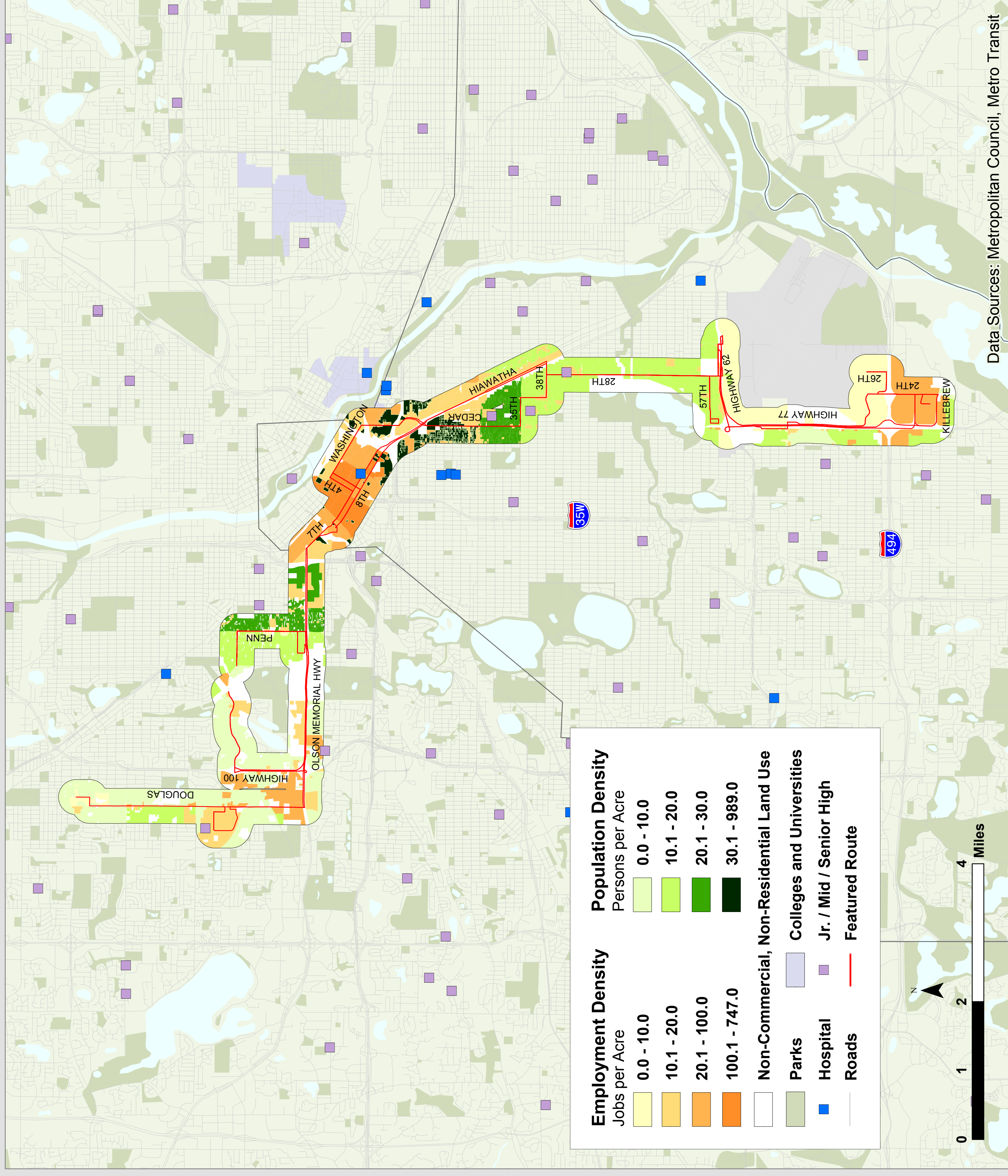


Route 19 -- Olson Hwy - 28th Avenue



Route Description

Serves Golden Valley Rd, 7th St N, Cedar Ave S, 28th Ave S.

Destinations Served

Golden Valley, Courage Center, Downtown Minneapolis, South Minneapolis, and Mall of America.

Prevailing Service Frequencies

		Weekday				Sat	Sun
		AM	MID	PM	EVE		
NB	10-20	20	20	10-20	30	30	60
SB	10-20	20	20	10-20	30	30	60

OWL - - -
v: variable

Span of Service

	Weekday	Saturday	Sunday
Current	3:07am - 1:40am	3:07am - 1:40am	3:07am - 1:40am

Service Performance

	Unlinked Boardings	Passengers per Hour	Revenue per Passenger	Subsidy per Passenger
Weekday	4,117	48	(\$1.79)	(\$1.79)
Saturday	2,272	41	(\$1.60)	(\$1.60)
Sunday	1,038	40	(\$1.61)	(\$1.61)

M-19

Route Area Demographic Statistics

Population (persons)	69,065
Residential Density (persons/acre)	17
Employment (# of jobs)	163,899
Employment Density (jobs/acre)	48

Metro Transit

