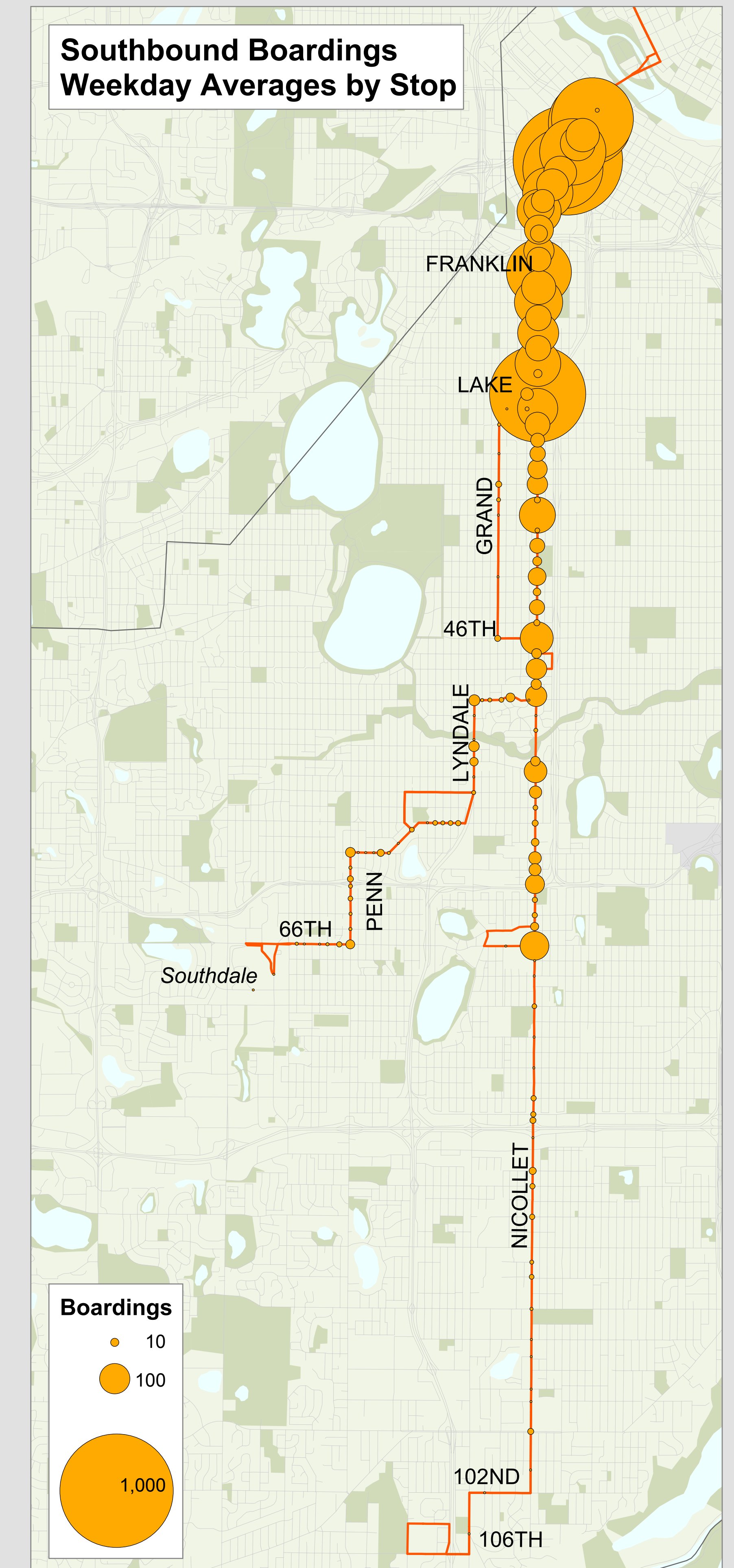
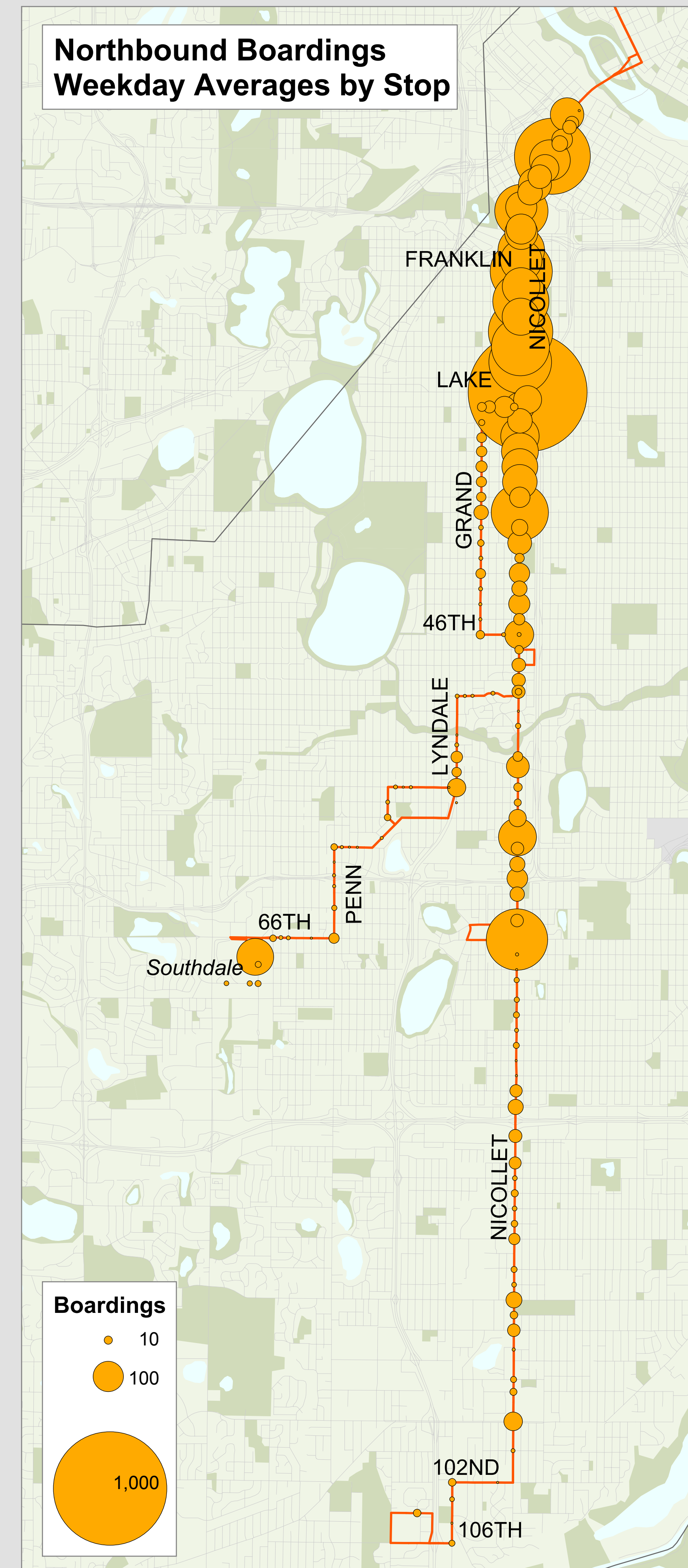
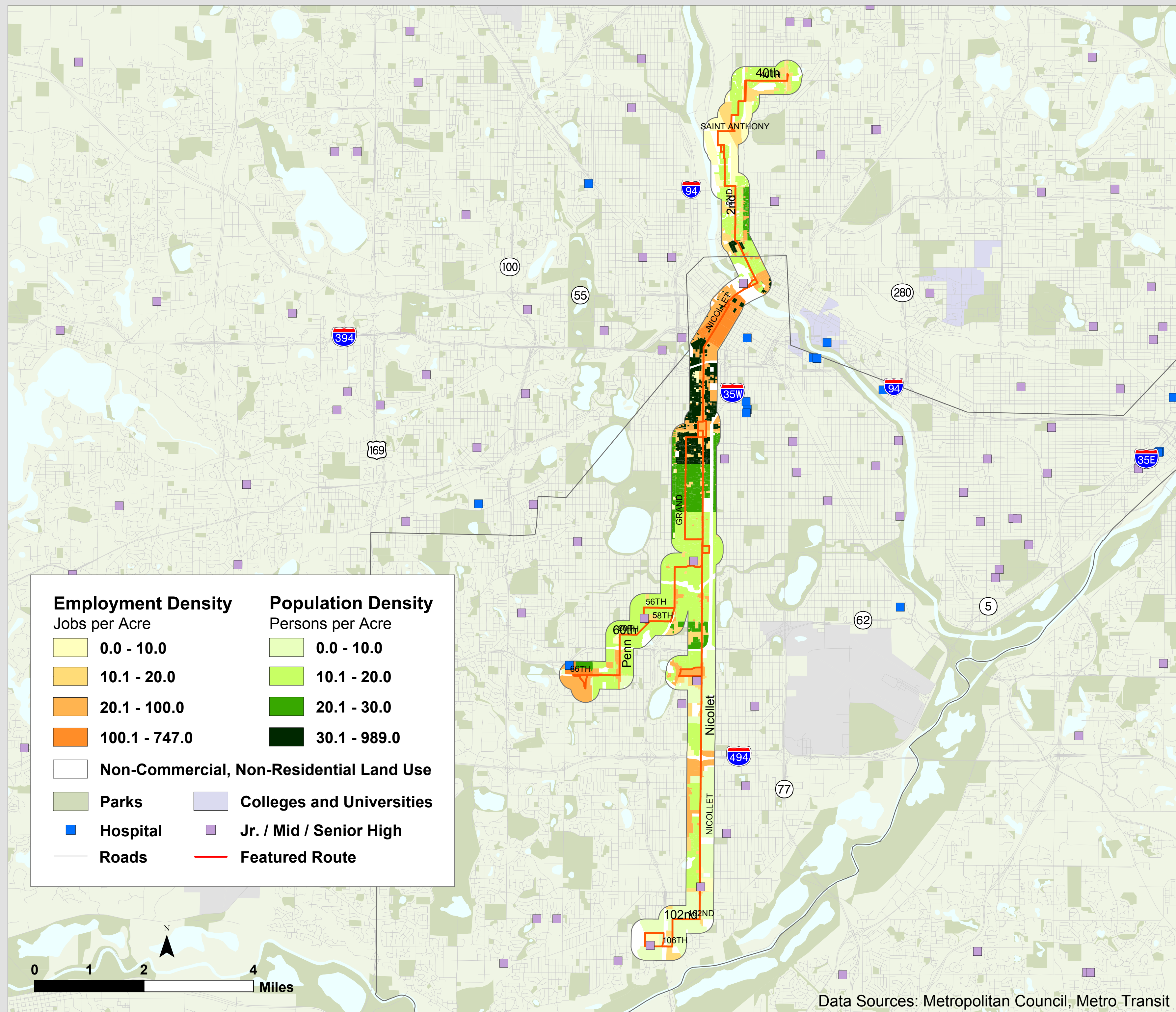


Route 18 -- Nicollet - 2nd Street

Metro Transit



Route Description

Serves 2nd St, Nicollet Ave, Grand Ave.

Destinations Served

Columbia Heights, Downtown Minneapolis, South Minneapolis, Minneapolis Institute of the Arts, Southdale Shopping Center, Richfield, Bloomington.

Route Area Demographic Statistics

Population (persons)	86,482
Residential Density (persons/acre)	17
Employment (# of jobs)	132,693
Employment Density (jobs/acre)	56

Prevailing Service Frequencies

	Weekday					Sat	Sun
	AM	MID	PM	EVE	OWL		
NB	3-6	5-6	3-6	7-12	60	7-10	10-15
SB	3-6	5-6	3-6	7-12	60	7-10	10-15

v: variable

Span of Service

	Weekday	Saturday	Sunday
Current	24 hours	24 hours	24 hours

Service Performance

	Unlinked Boardings	Passengers per Revenue Hour	Subsidy per Passenger
Weekday	15,480	63	(\$0.95)
Saturday	10,120	56	(\$0.92)
Sunday	6,657	59	(\$0.85)

M-18

May 2002