

Corridor Demographics

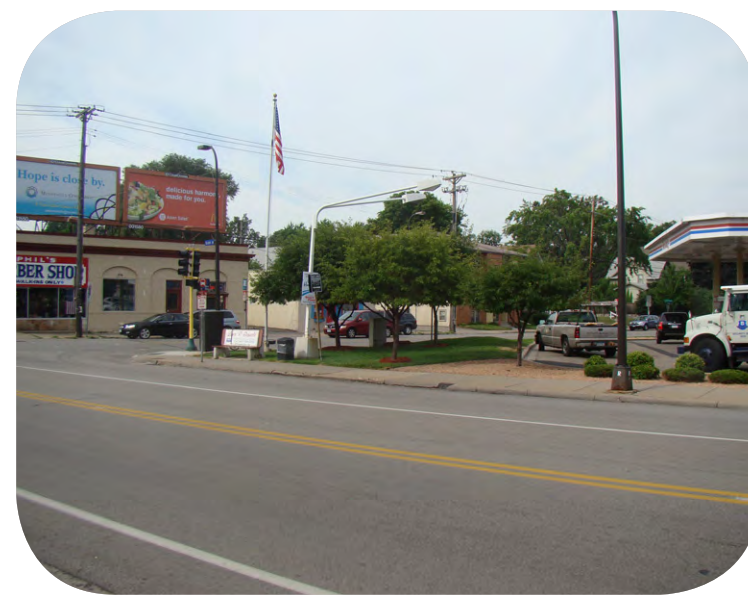
	Within ¼ Mile of Rapid Bus Stations	Within ½ Mile of Rapid Bus Stations
Population (2010)	46,900	91,300
Housing Units (2010)	26,100	47,900
Total Jobs (2008)	143,900	164,200
Outside Downtown Minneapolis	12,800	23,800



Nicollet and 4th- Downtown Minneapolis



38th and Nicollet



Diamond Lake Road and Nicollet

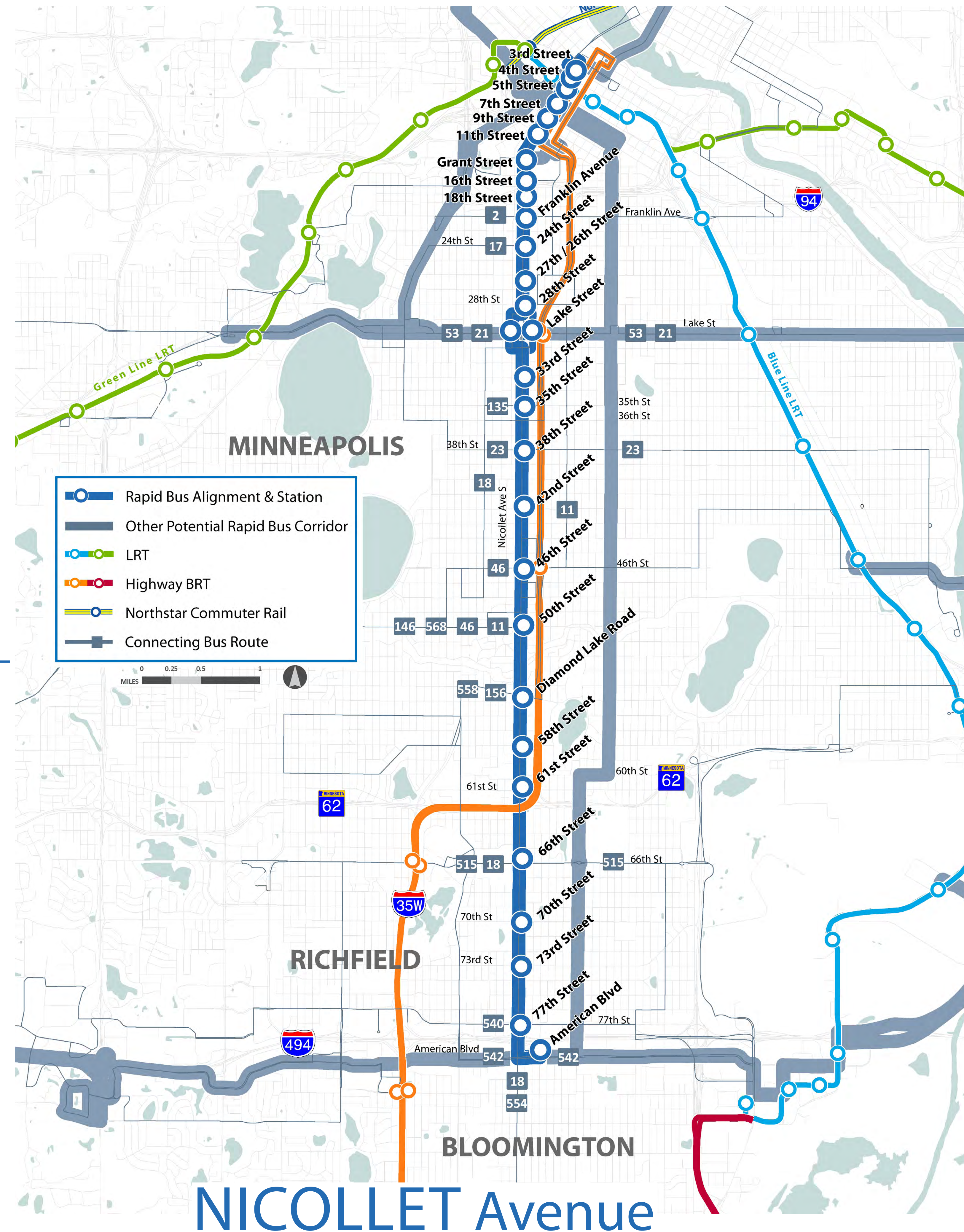
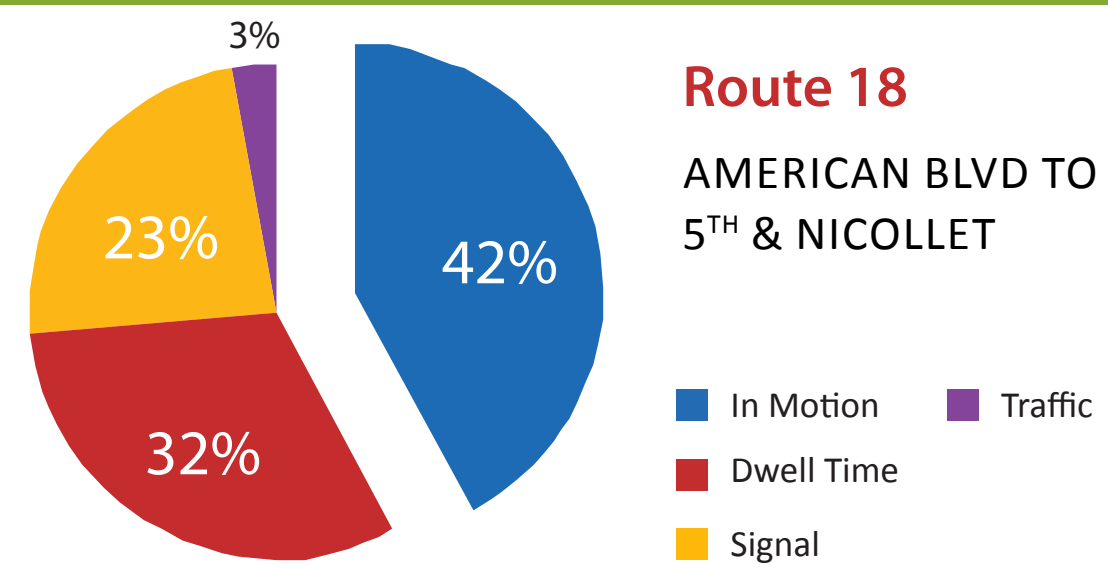


66th and Nicollet

Current Bus Service

Route	18
Average Weekday Bus Speed	10.9 miles per hour
Average Weekday Riders in Corridor	13,600
On-time Performance	90.4%
Frequency (Rush Hours)	7.5 Minutes

Current Bus Travel Time



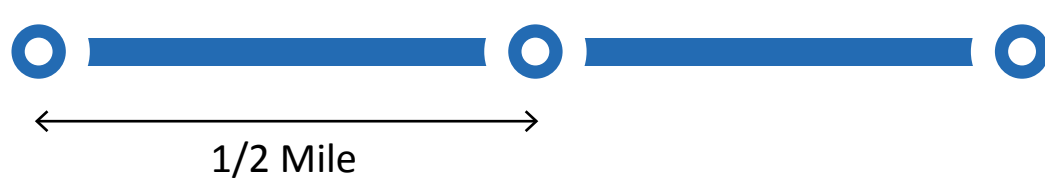
Overview

Corridor Length: 8.8 Miles
 Number of Stations: 28
 Stations per Mile: 3.2

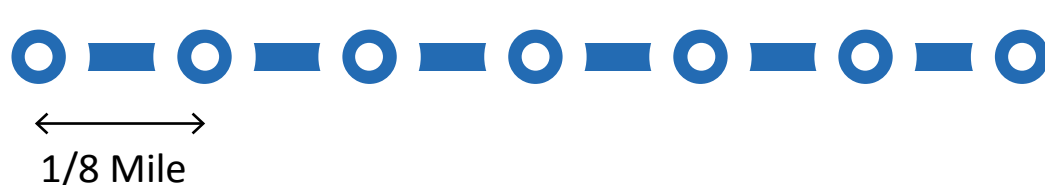
Frequency and Stop Spacing

Weekday Rush Hours

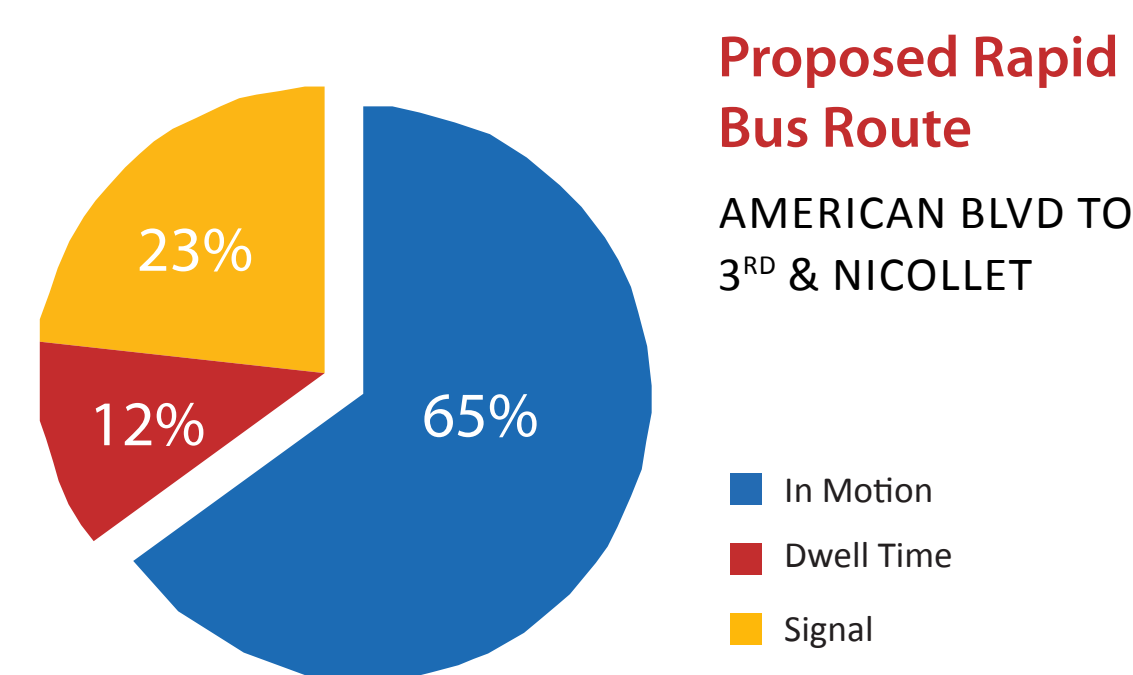
Rapid Bus: 7.5-minute Service



Route 18: 15-minute Service



Rapid Bus Travel Time



Travel Time Savings

AMERICAN BLVD TO 7 TH & NICOLLET	
Existing Route	49 Minutes
Rapid Bus	39 Minutes
Change	20% Faster

NICOLLET Avenue
RAPID BUS CONCEPT