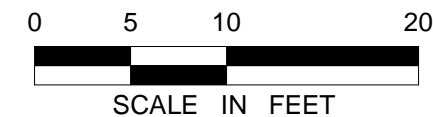
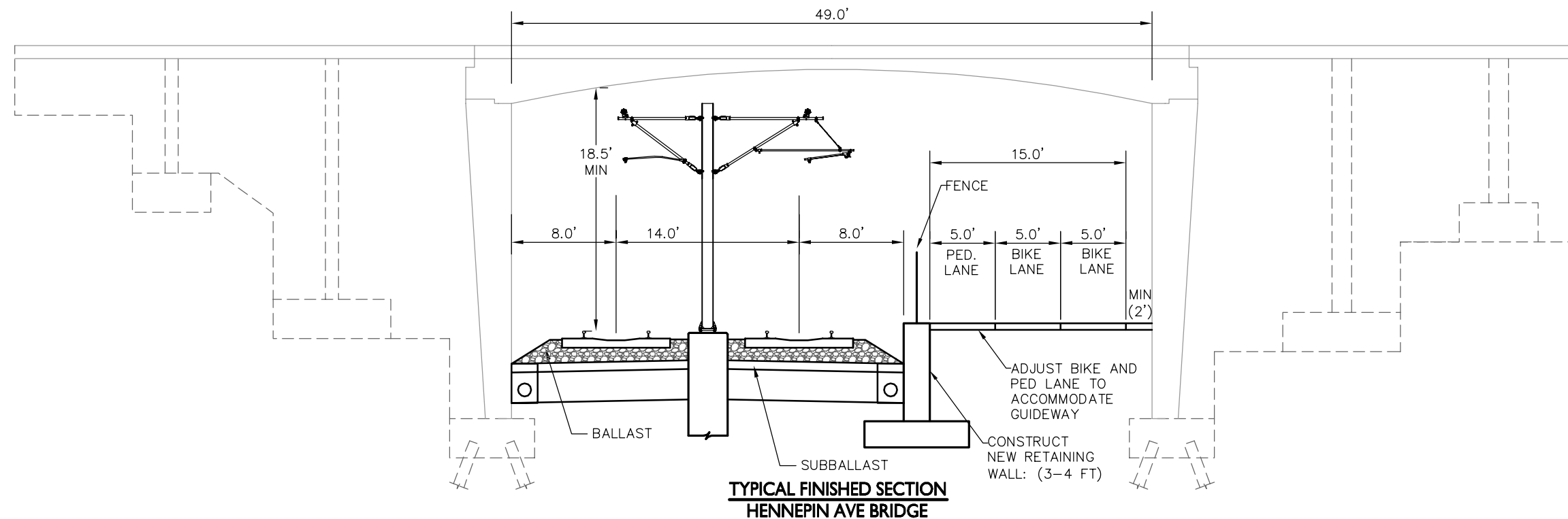
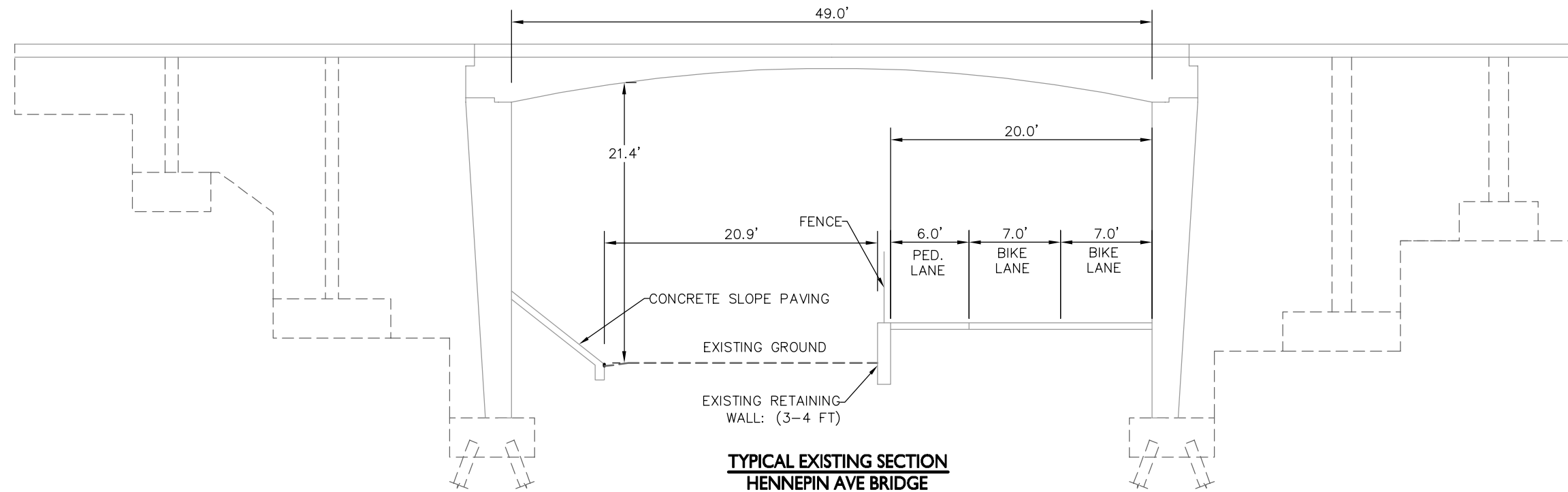


K:\wc_transit\160528015_midtown aa\CAD\plan sheets\MG_TYP_SECTIONS.dwg September 05, 2013 - 3:07pm



DRAFT
FOR DISCUSSION
ONLY 9/5/2013

No.	Date	Revisions	App.	DRAWING NAME MG_TYP_SECTIONS.dwg
				DESIGNED BY: EPS
				DRAWN BY: EPS
				CHECKED BY: LMR
				DATE: 9/05/2013
				PROJECT NO. 160528015



ENGINEERS
PLANNERS
DESIGNERS



**MIDTOWN CORRIDOR
ALTERNATIVES ANALYSIS**
GREENWAY BRIDGE
TYPICAL SECTIONS

SHEET NO.
1
9

CONCRETE INFILL PIER PROTECTION TO 12' ABOVE TRACK

20.0'

CONCRETE SLOPE PAVING

1½:1 SLOPE

42.0'

8.5'

14.0'

9.0'

18.5' MIN

CL EB TRACK

CL WB TRACK

FENCE

6.0' PED. LANE

MIN (2')

5.0' BIKE LANE

5.0' BIKE LANE

MIN (2')

MIN (2')

RELOCATED TRAIL

CONSTRUCT NEW RETAINING WALL (8-10 FT)

SOIL SOLIDIFICATION

BALLAST

SUBBALLAST

CONSTRUCT NEW RETAINING WALL (3-4 FT)

**TYPICAL FINISHED SECTION
DUPONT BRIDGE**

FOR DISCUSSION
ONLY 9/5/2013

No.	Date	Revisions	App.	DRAWING NAME MG_TYP_SECTIONS.dwg
				DESIGNED BY: EPS
				DRAWN BY: EPS
				CHECKED BY: LMR
				DATE: 9/05/2013
				PROJECT NO. 160528015



**MIDTOWN CORRIDOR
ALTERNATIVES ANALYSIS**

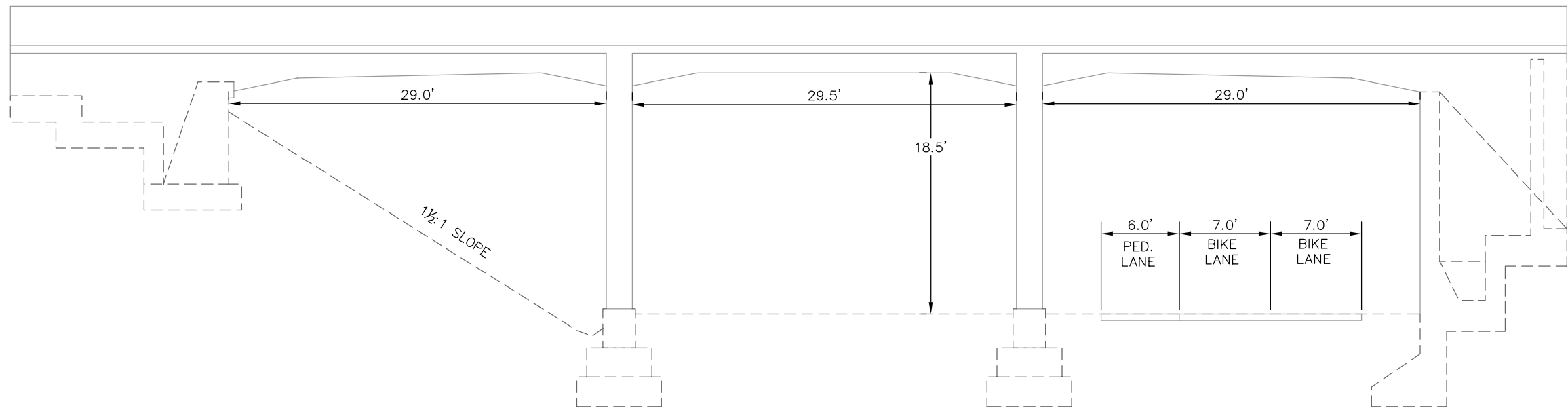
GREENWAY BRIDGE
TYPICAL SECTIONS

SHEET NO.
2

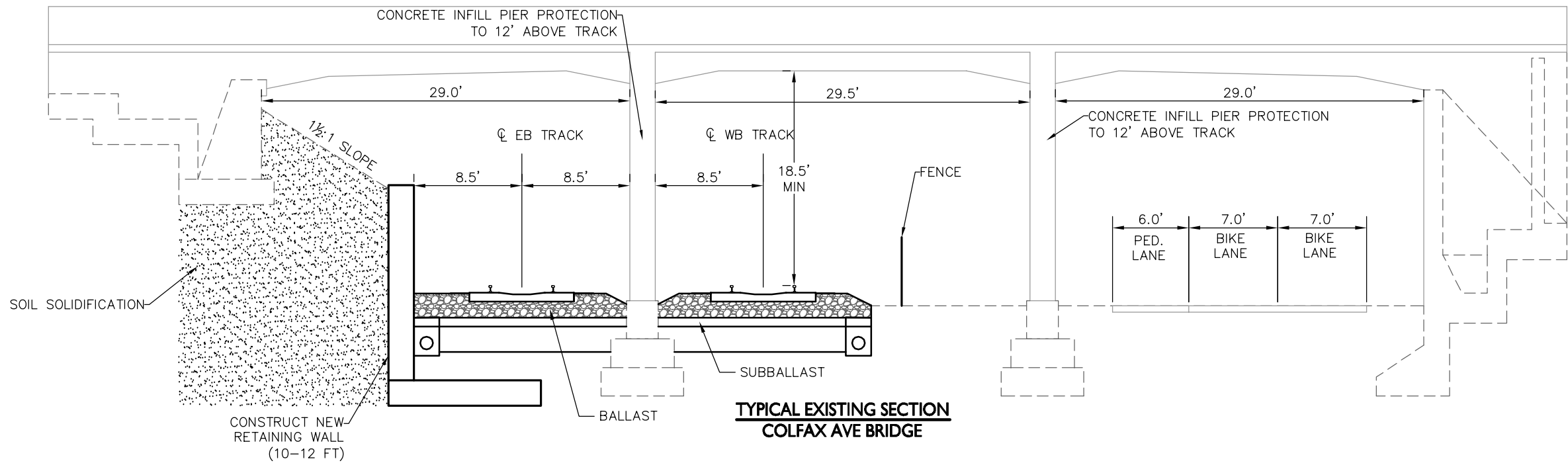


midtowntransitway.org

K:\wc_transit\160528015_midtown aa\CAD\plan sheets\MG_TYP_SECTIONS.dwg September 05, 2013 - 3:07pm

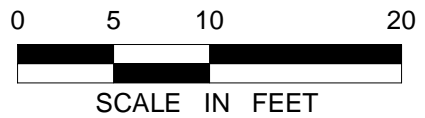


TYPICAL EXISTING SECTION
COLFAX AVE BRIDGE



TYPICAL EXISTING SECTION
COLFAX AVE BRIDGE

NOTE:
BRIDGE SECTION SIMILAR TO:
BRYANT, ALDRICH, HARRIET, GRAND, AND 1ST AVE



DRAFT

FOR DISCUSSION
ONLY 9/5/2013

No.	Date	Revisions	App.	DRAWING NAME MG_TYP_SECTIONS.dwg
				DESIGNED BY: EPS
				DRAWN BY: EPS
				CHECKED BY: LMR
				DATE: 9/05/2013
				PROJECT NO. 160528015



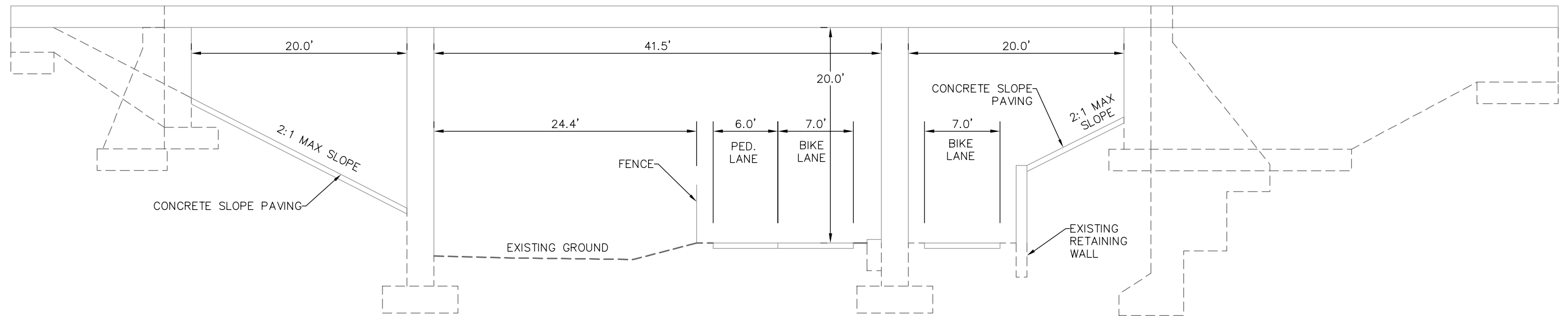
MIDTOWN CORRIDOR
ALTERNATIVES ANALYSIS
GREENWAY BRIDGE
TYPICAL SECTIONS

SHEET NO.
3
9

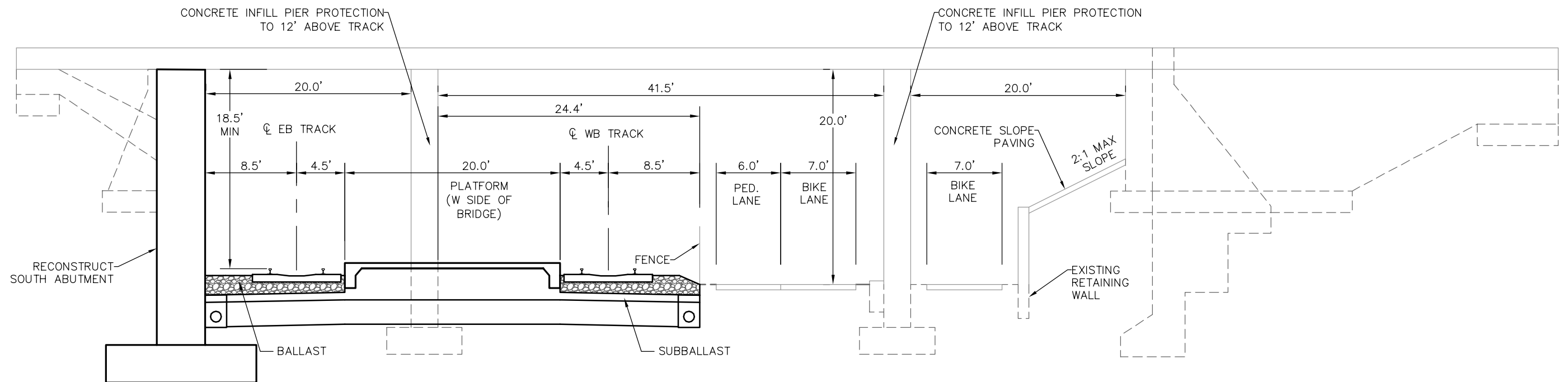


midtowntransitway.org

K:\lwc_transit\160528015_midtown aa\CAD\plan sheets\MG_TYP_SECTIONS.dwg September 05, 2013 - 3:07pm

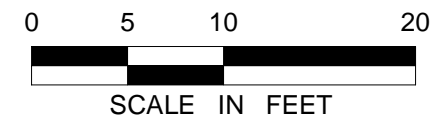


**TYPICAL EXISTING SECTION
LYNDALE AVE**



**TYPICAL FINISHED SECTION
LYNDALE AVE**

NOTE:
BRIDGE SECTION SIMILAR TO:
GARFIELD AVE



DRAFT
FOR DISCUSSION
ONLY 9/5/2013

No.	Date	Revisions	App.	DRAWING NAME MG_TYP_SECTIONS.dwg
				DESIGNED BY: EPS
				DRAWN BY: EPS
				CHECKED BY: LMR
				DATE: 9/05/2013
				PROJECT NO. 160528015



ENGINEERS
PLANNERS
DESIGNERS

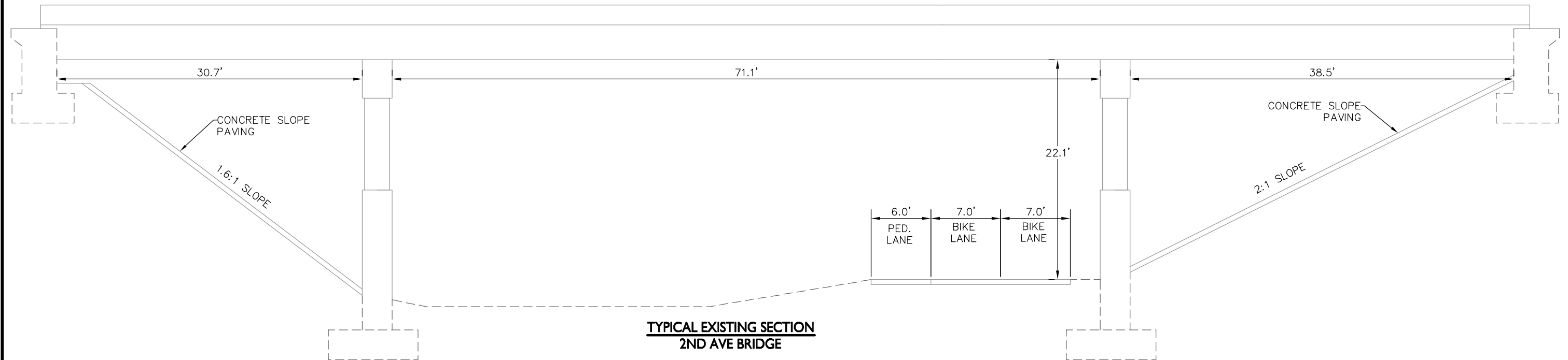


**MIDTOWN CORRIDOR
ALTERNATIVES ANALYSIS**
GREENWAY BRIDGE
TYPICAL SECTIONS

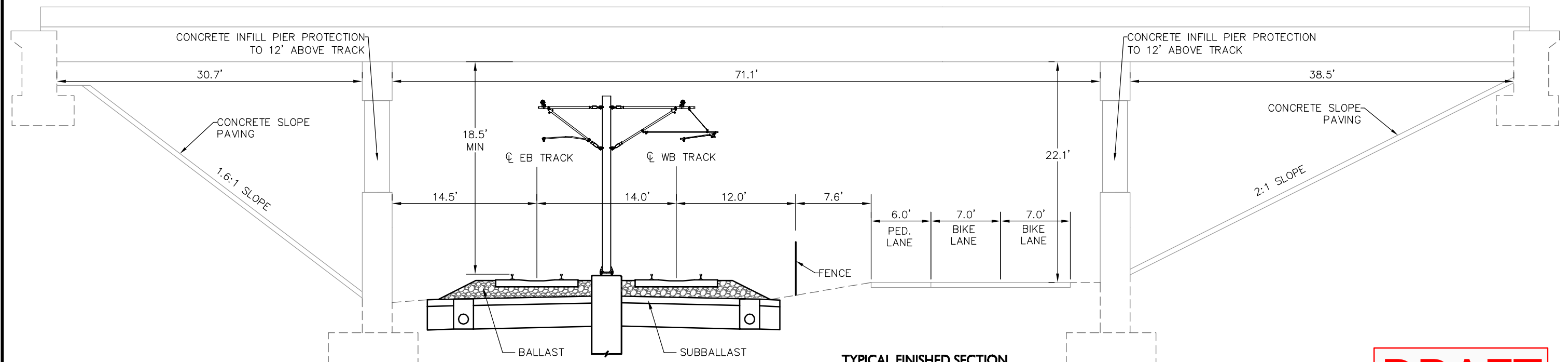
SHEET NO.
4
9



K:\trc_transit\160528015_midtown aa\CAD\plan sheets\MG_TYP_SECTIONS.dwg September 05, 2013 - 3:07pm

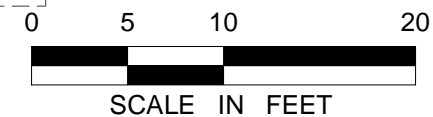


TYPICAL EXISTING SECTION
2ND AVE BRIDGE



TYPICAL FINISHED SECTION
2ND AVE BRIDGE

NOTE:
BRIDGE SECTION SIMILAR TO:
4TH AVE



DRAFT
FOR DISCUSSION
ONLY 9/5/2013

No.	Date	Revisions	App.	DRAWING NAME MG_TYP_SECTIONS.dwg
				DESIGNED BY: EPS
				DRAWN BY: EPS
				CHECKED BY: LMR
				DATE: 9/05/2013
				PROJECT NO. 160528015

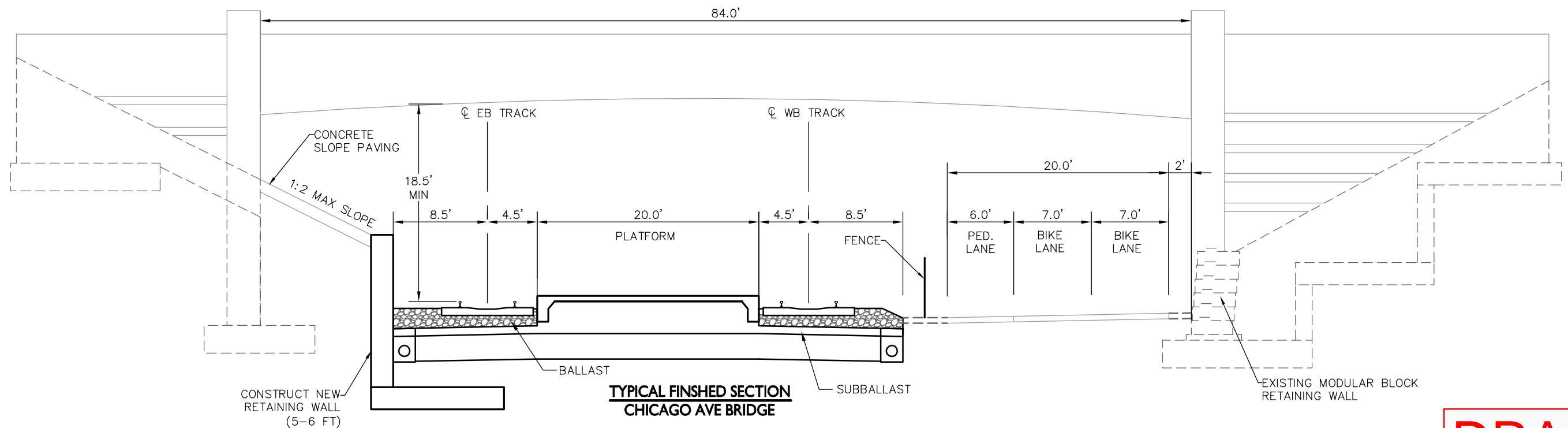
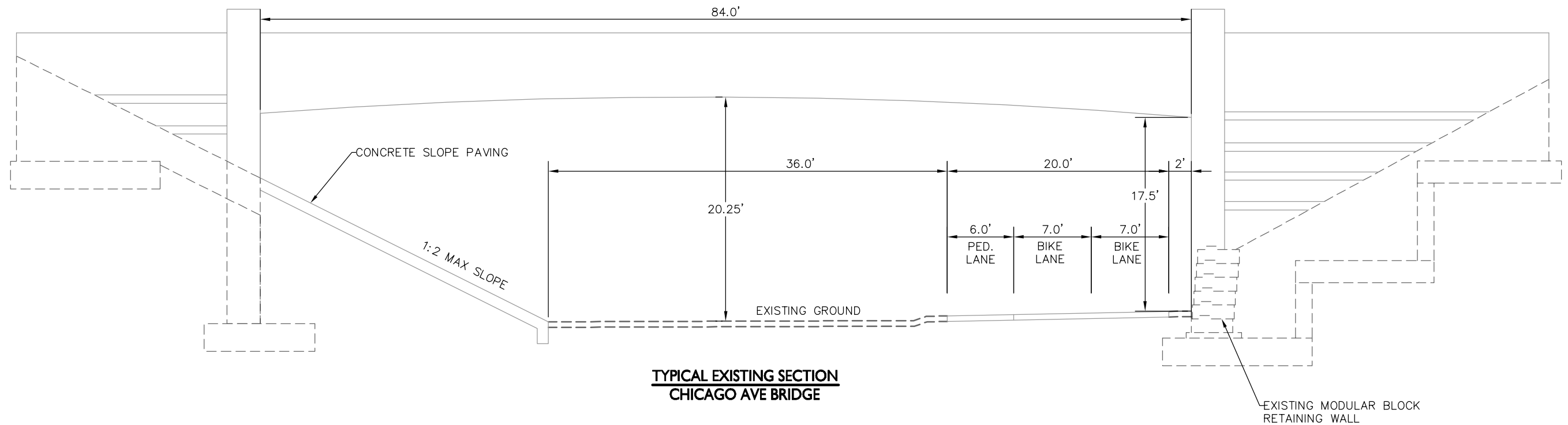


MIDTOWN CORRIDOR
ALTERNATIVES ANALYSIS
GREENWAY BRIDGE
TYPICAL SECTIONS

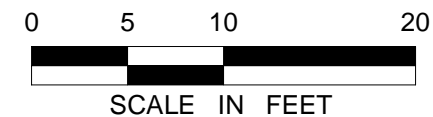
SHEET NO.
5
9



K:\wc_transit\160528015_midtown aa\CAD\plan sheets\MG_TYP_SECTIONS.dwg September 05, 2013 - 3:07pm



NOTE:
BRIDGE SECTION SIMILAR TO:
35W, AND PARK AVE



DRAFT
FOR DISCUSSION
ONLY 9/5/2013

No.	Date	Revisions	App.	DRAWING NAME MG_TYP_SECTIONS.dwg
				DESIGNED BY: EPS
				DRAWN BY: EPS
				CHECKED BY: LMR
				DATE: 9/05/2013
				PROJECT NO. 160528015



ENGINEERS
PLANNERS
DESIGNERS

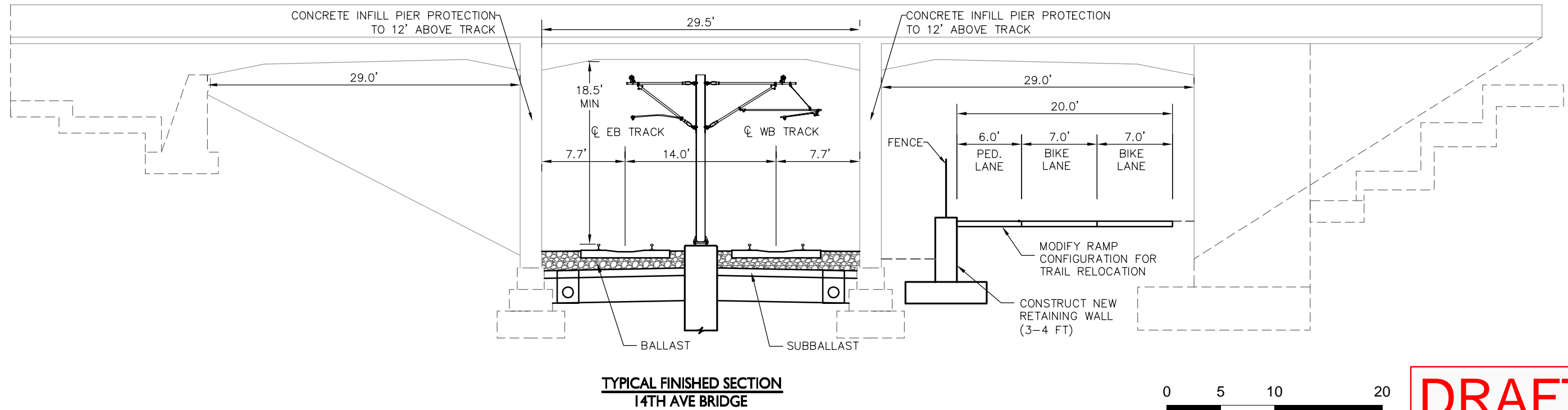
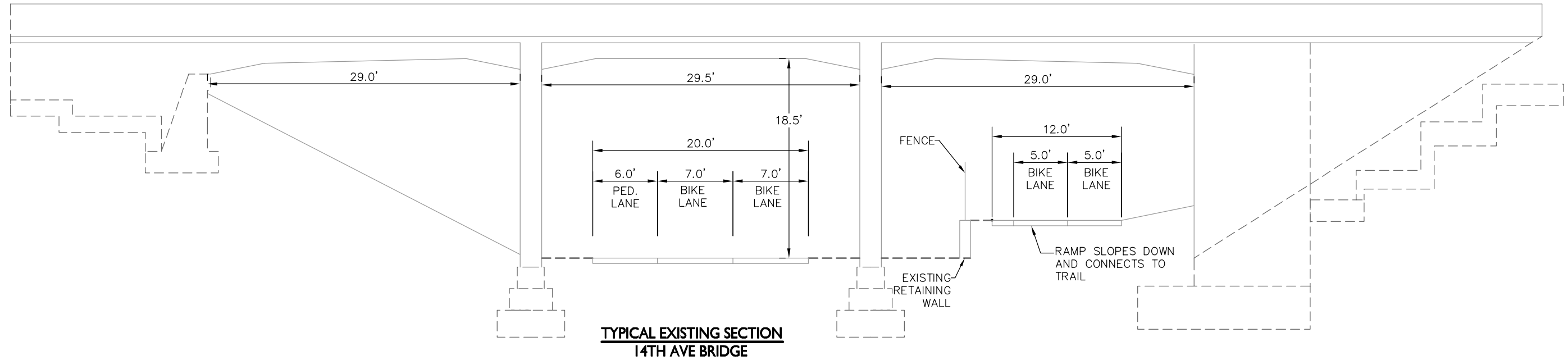


**MIDTOWN CORRIDOR
ALTERNATIVES ANALYSIS**
GREENWAY BRIDGE
TYPICAL SECTIONS

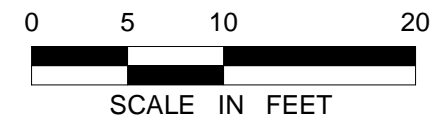
SHEET NO.
6
9



K:\trc_transit\160528015_midtown aa\CAD\plan sheets\MG_TYP_SECTIONS.dwg September 05, 2013 - 3:07pm



NOTE:
BRIDGE SECTION SIMILAR TO:
BLAISDELL, STEVENS, PORTLAND, OAKLAND, ELLIOT, 10TH, 11TH, AND 13TH AVE



DRAFT
FOR DISCUSSION
ONLY 9/5/2013

No.	Date	Revisions	App.	DRAWING NAME MG_TYP_SECTIONS.dwg
				DESIGNED BY: EPS
				DRAWN BY: EPS
				CHECKED BY: LMR
				DATE: 9/05/2013
				PROJECT NO. 160528015



ENGINEERS
PLANNERS
DESIGNERS



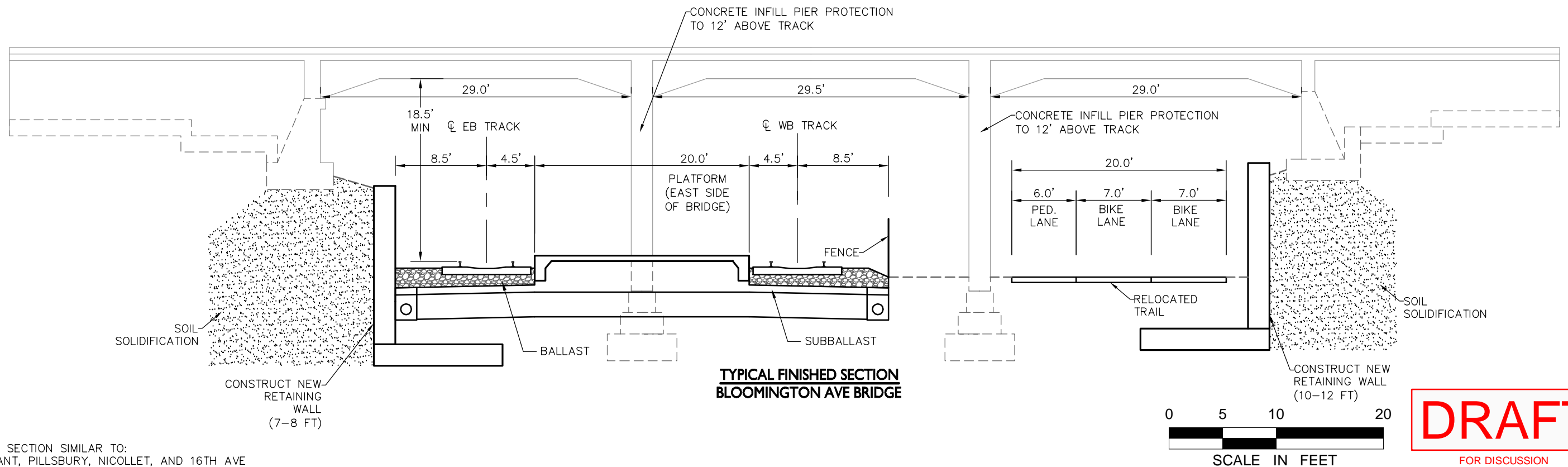
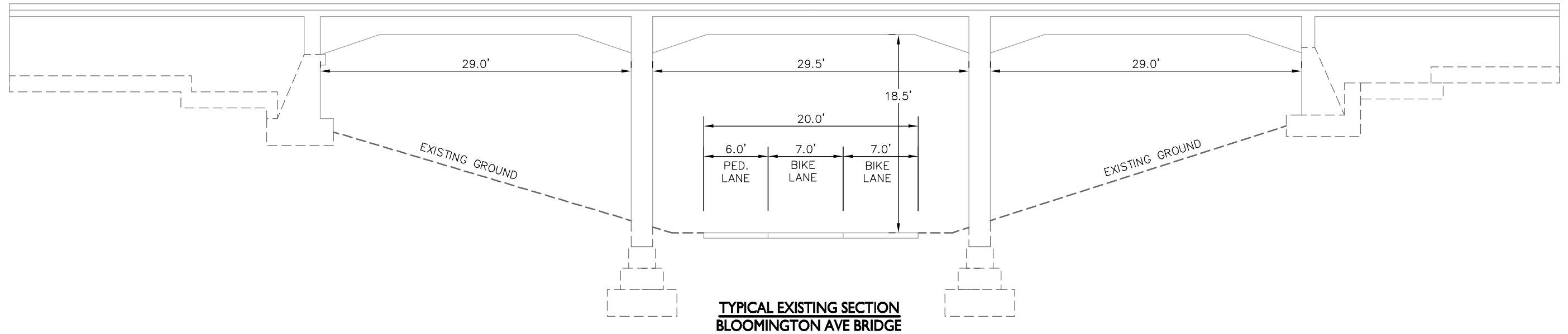
**MIDTOWN CORRIDOR
ALTERNATIVES ANALYSIS**
GREENWAY BRIDGE
TYPICAL SECTIONS

SHEET NO.
7
9



midtowntransitway.org

K:\wc_transit\160528015_midtown aa\CAD\plan sheets\MG_TYP_SECTIONS.dwg September 05, 2013 - 3:07pm



NOTE:
BRIDGE SECTION SIMILAR TO:
PLEASANT, PILLSBURY, NICOLLET, AND 16TH AVE

DRAFT
FOR DISCUSSION
ONLY 9/5/2013

No.	Date	Revisions	App.	DRAWING NAME MG_TYP_SECTIONS.dwg
				DESIGNED BY: EPS
				DRAWN BY: EPS
				CHECKED BY: LMR
				DATE: 9/05/2013
				PROJECT NO. 160528015

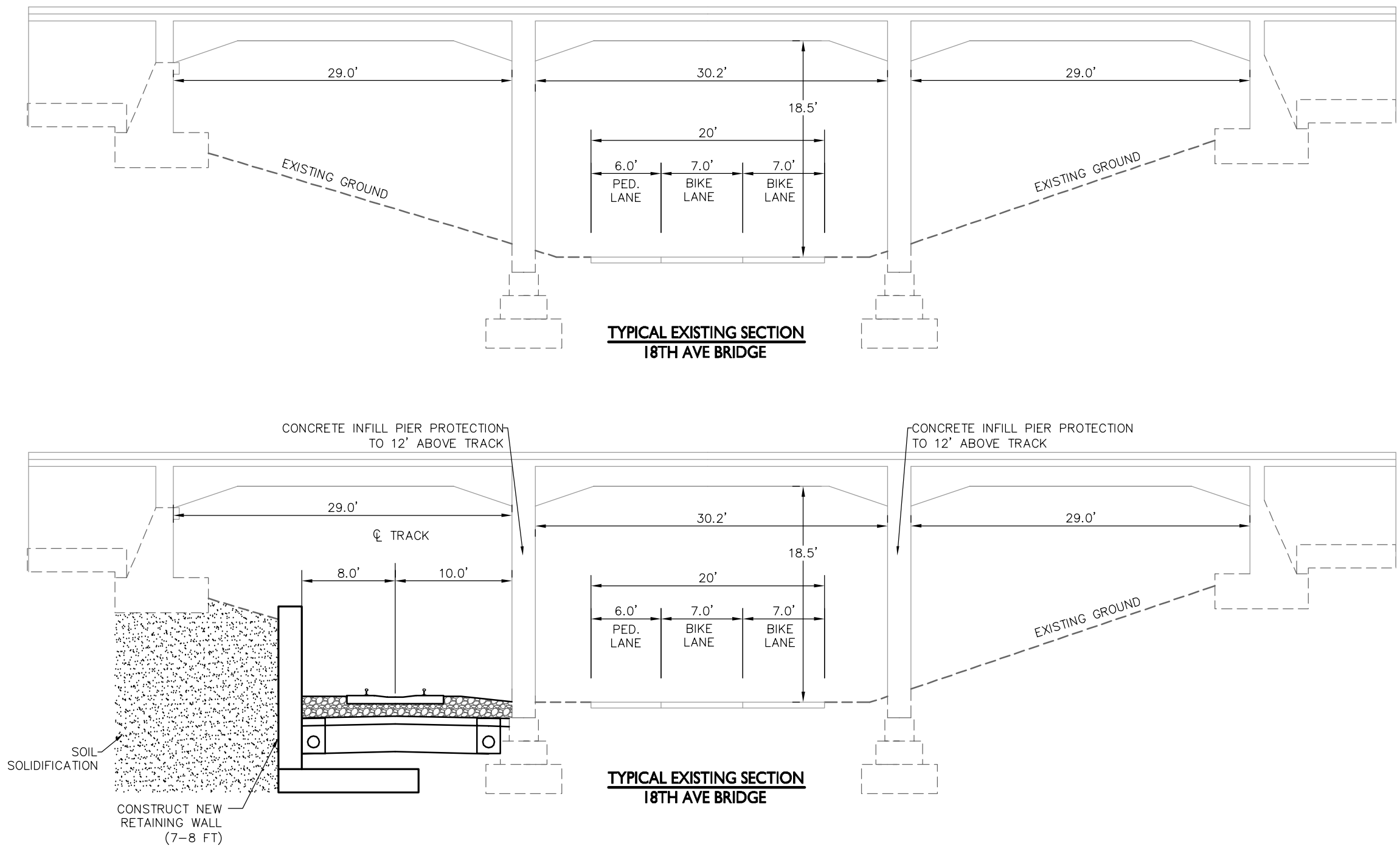


MIDTOWN CORRIDOR
ALTERNATIVES ANALYSIS
GREENWAY BRIDGE
TYPICAL SECTIONS

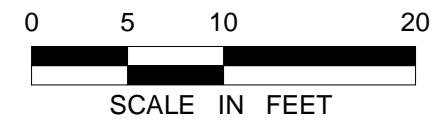
SHEET NO.
8
9



K:\wc_transit\160528015_midtown aa\CAD\plan sheets\MG_TYP_SECTIONS.dwg September 05, 2013 - 3:07pm



NOTE:
BRIDGE SECTION SIMILAR TO:
FREMONT, COLUMBUS, 12TH, 15TH, 17TH, 18TH, AND CEDAR AVE



DRAFT
FOR DISCUSSION
ONLY 9/5/2013

No.	Date	Revisions	App.	DRAWING NAME MG_TYP_SECTIONS.dwg
				DESIGNED BY: EPS
				DRAWN BY: EPS
				CHECKED BY: LMR
				DATE: 9/05/2013
				PROJECT NO. 160528015



**MIDTOWN CORRIDOR
ALTERNATIVES ANALYSIS**
GREENWAY BRIDGE
TYPICAL SECTIONS

SHEET NO.
9
9