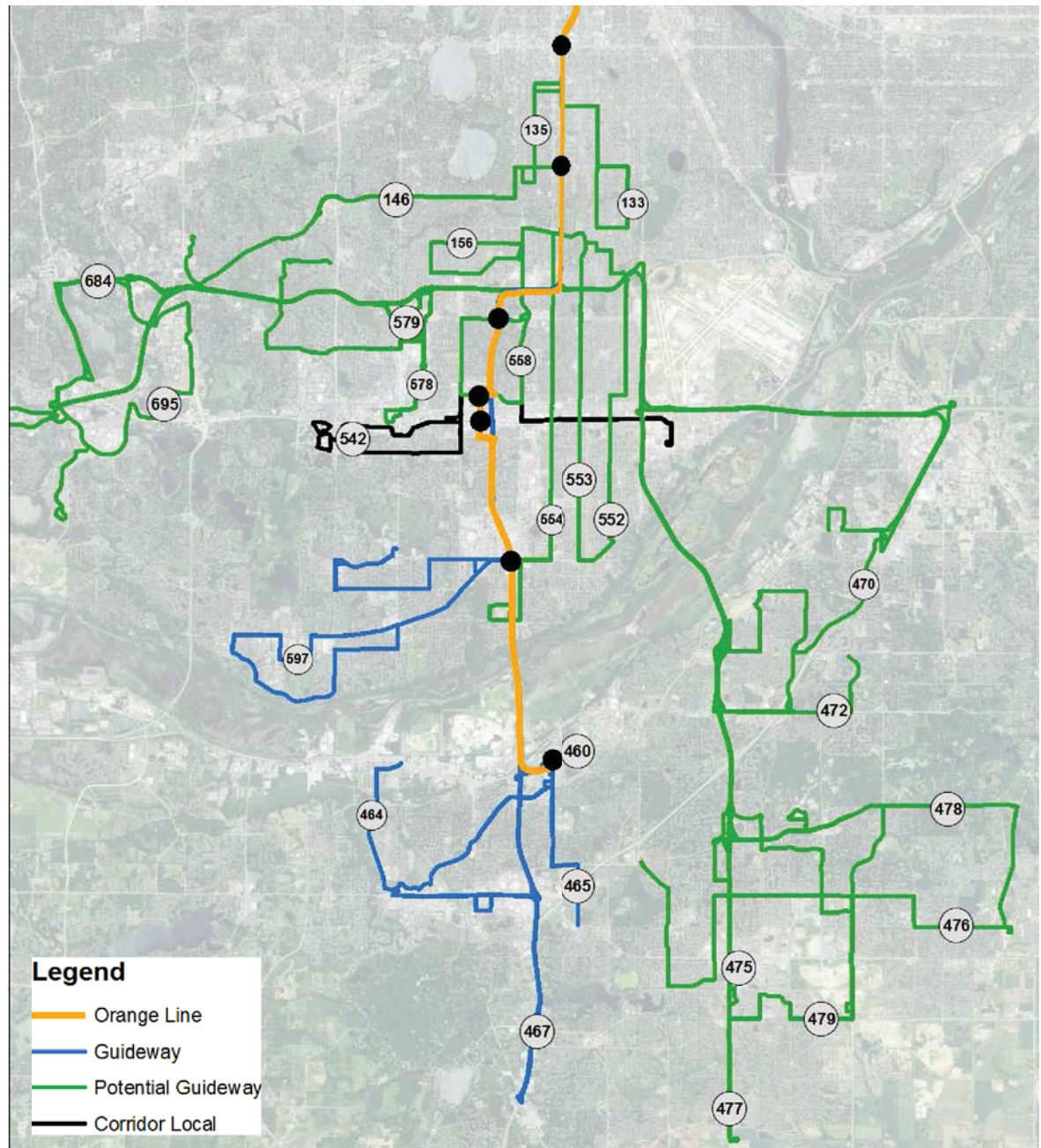


# Orange Line Station-to-Station and Existing Corridor Routes



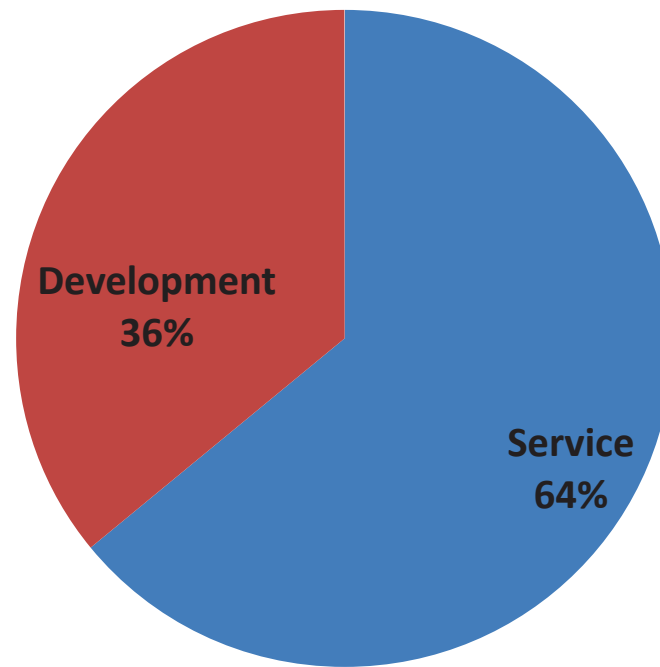
# Orange Line Corridor Ridership

Route Type	Boardings (unlinked)		Guideway Rides (Linked)
	2014 Count	2040 Build	2040 Build
Corridor Local	311	4,150	
Potential Guideway	7,030	10,420	9,290
Guideway	6,761	6,150	5,850
Station-to-Station		11,400	11,400
<b>Guideway Total<sup>(1)</sup></b>			17,250
<b>Potential Guideway Total<sup>(2)</sup></b>			26,540

(1) Consistent with Metropolitan Council Regional Transitway Guidelines Guideway definition

(2) Consistent with FTA New Starts Guideway definition

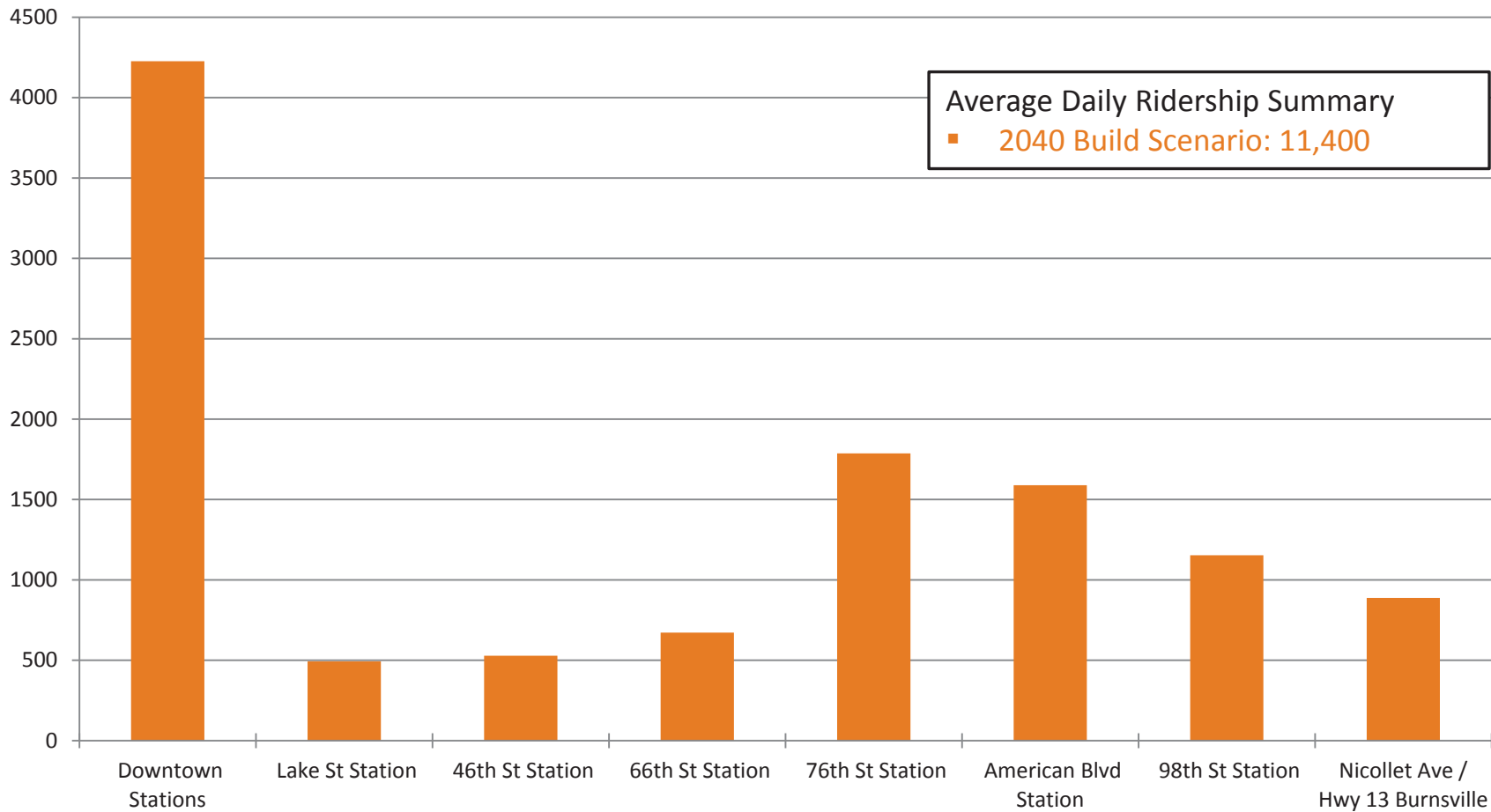
# Orange Line Station-to-Station Build Scenario Ridership Build Up



Ridership Summarized in Production/Attraction Format



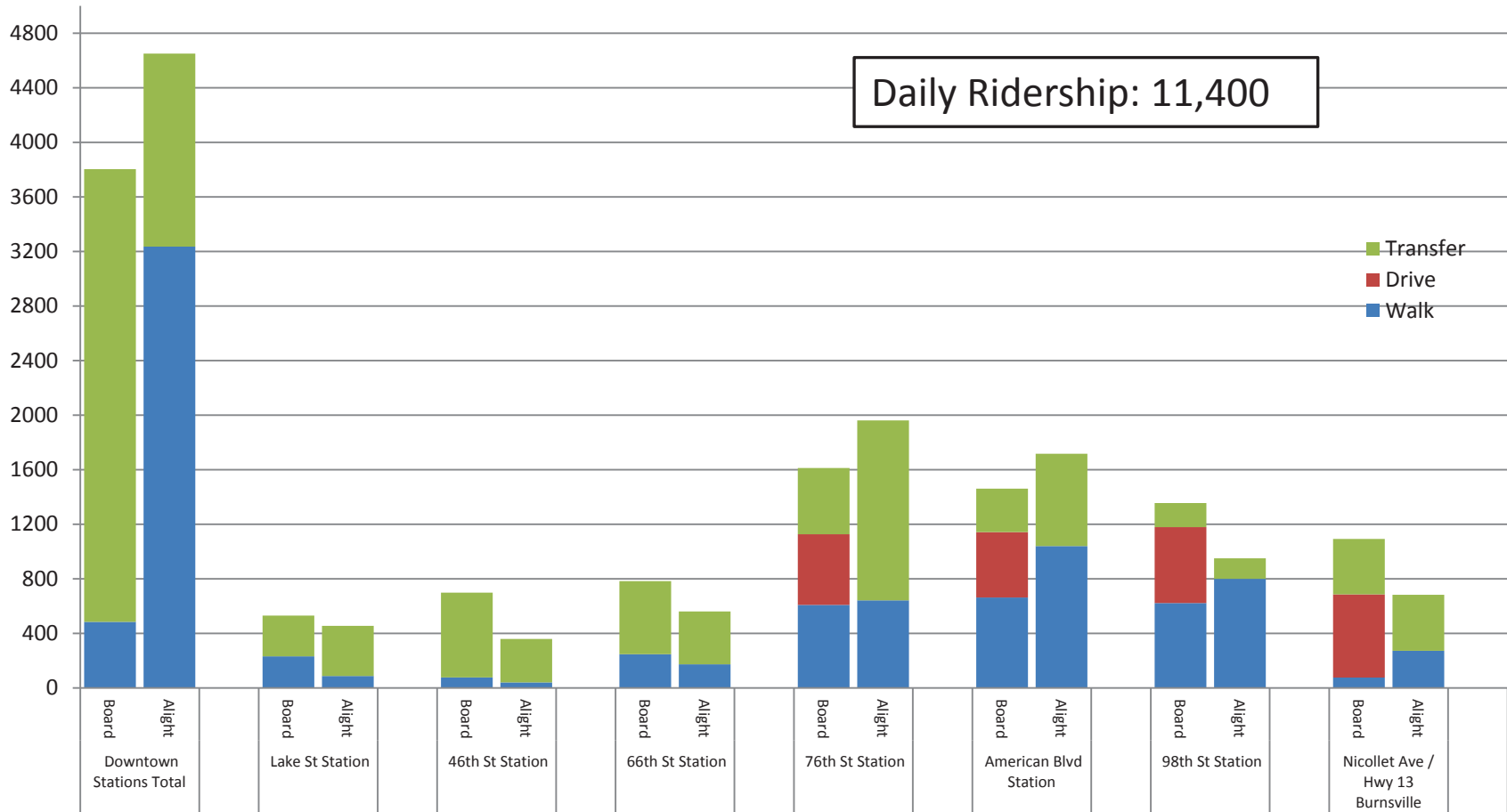
# Orange Line Station-to-Station Daily Boardings



Boardings and Alightings are depicted in Production/Attraction format



# Orange Line Station-to-Station Daily Boardings and Alightings by Access Type (2040 Build)



Boardings and Alightings are depicted in Production/Attraction format

