

Design Challenge:
Provide Station Design and Ammenities to establish Sense of Place and Permanence.

Design Elements:

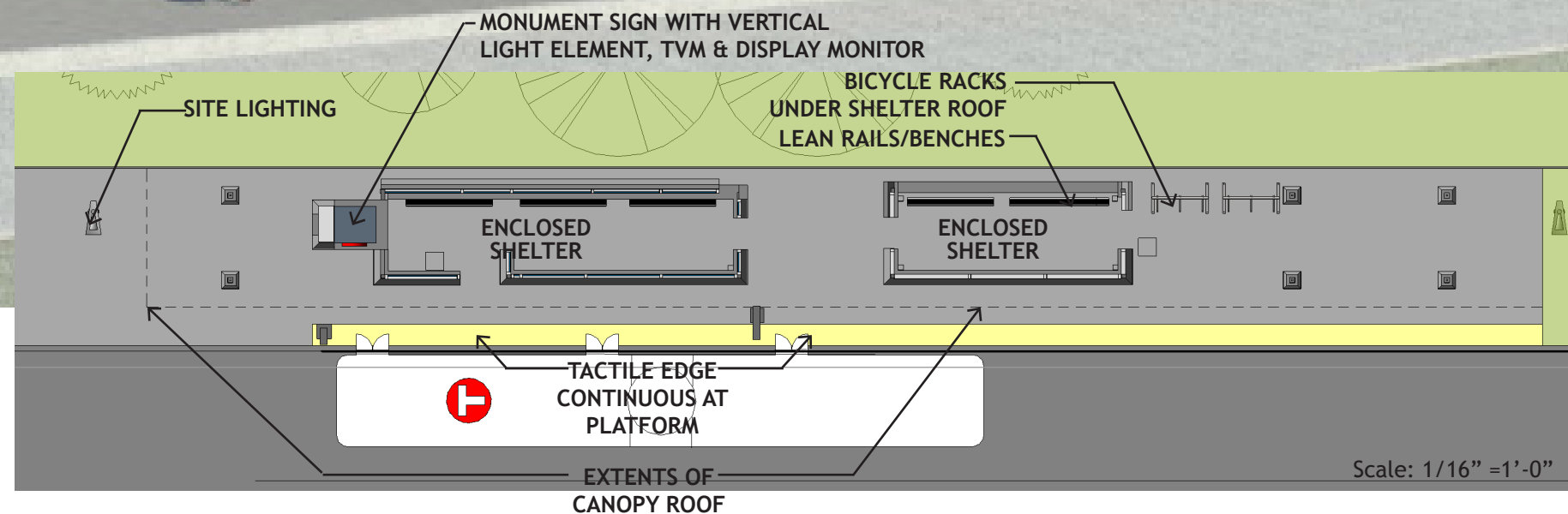
- **Weighted Base** - Provides sense of permanence and attachment to ground plane. Provides sense of enclosure and security. Provide additional shelter from wind bown elements. Extend into site to provide seating walls and site retaining walls.
- **Transparent Walls** - Provide clear site lines for riders waiting for bus. Provides protection from weather. Designed to use standard glazing sizes.
- **Canopy** - Provides linear expression of transit movement. Provides protection from sun, rain and snow.
- **Vertical Monument Element** - Provides site identity. Provides vertical counter to linear expression. Base of monument encloses ticket vending machine, annunciator, digital display monitor and rider information. Vertical LED light element provides area lighting and station identification. Monument provides branding opportunities and signage opportunities.

- **Curvilinear Roof Form** - Provides route identity and draws from design elements of Lake Street Station and 46th Street Station.
- **Columns** - Extend the canopy roof to provide sheltered areas for waiting riders and bicycle storage. Extend sheltered platform areas.
- **Standard station signage and wayfinding** for route/system identity.

Design elements and station amenities designed to provide variety of component combinations for site specific installations with rider comfort, accessibility and ease of maintenance as critical criteria.

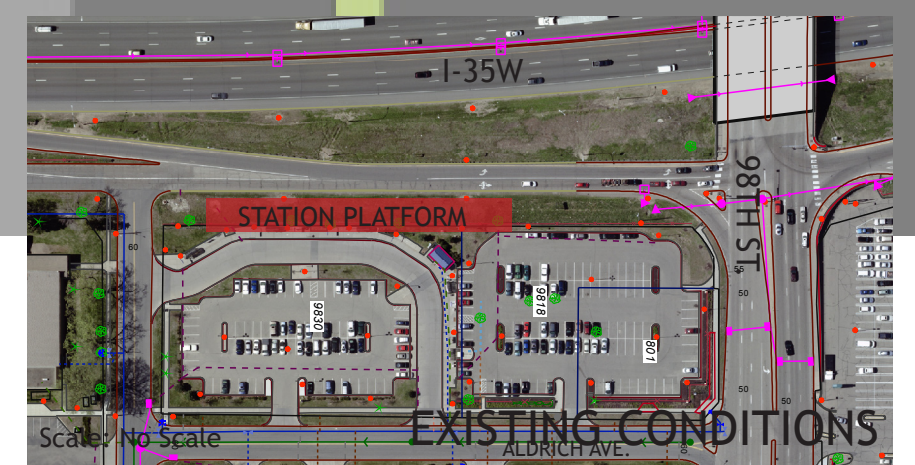
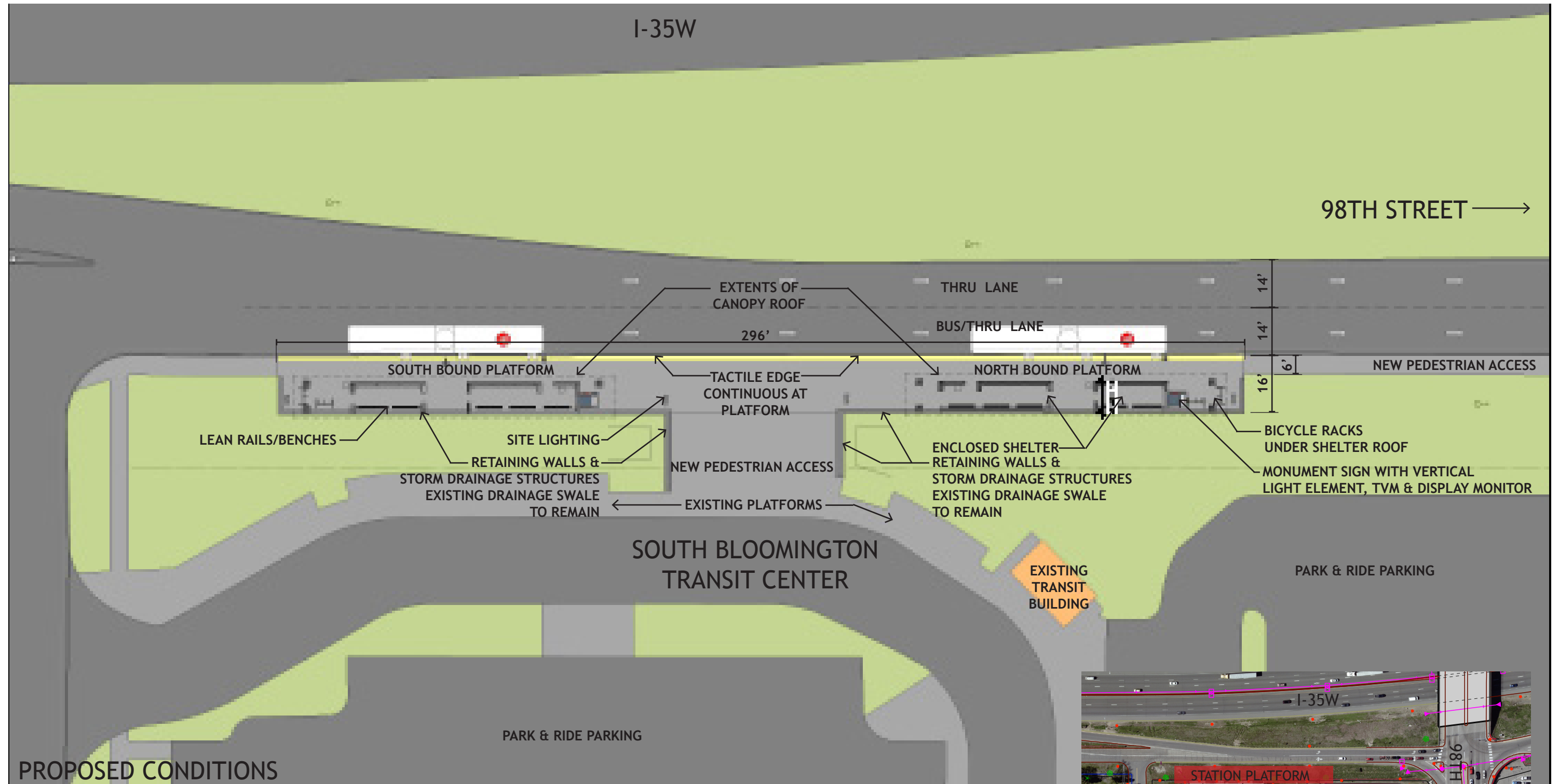
Station Ammenities will include the following:

- Shelter Design based on Site Specific Criteria
- Ticketing Vending Machine
- Real Time Signage (Pole Mounted and Flat Panel Display Types)
- Route Signage (Metro Transit Standards)
- Platform Signage (Metro Transit Standards)
- Way Finding (Signage, Lighting, Paving and other opportunities to create connections between stations.)
- Bike Racks
- Benches
- Waste Containers
- Lighting (High Efficiency Lighting)
- Platform Materials (Colored Banding and/or Texture)
- Fencing/Guardrail Materials
- Landscaping (Native Sustainable Plants)



I-35W

98TH STREET →



Scale: 1/32" = 1'-0"

PROJECT NO.: 10013.008

Southbound Concept H - Aldrich Ave. Loop & Northbound Concept A - Nearside

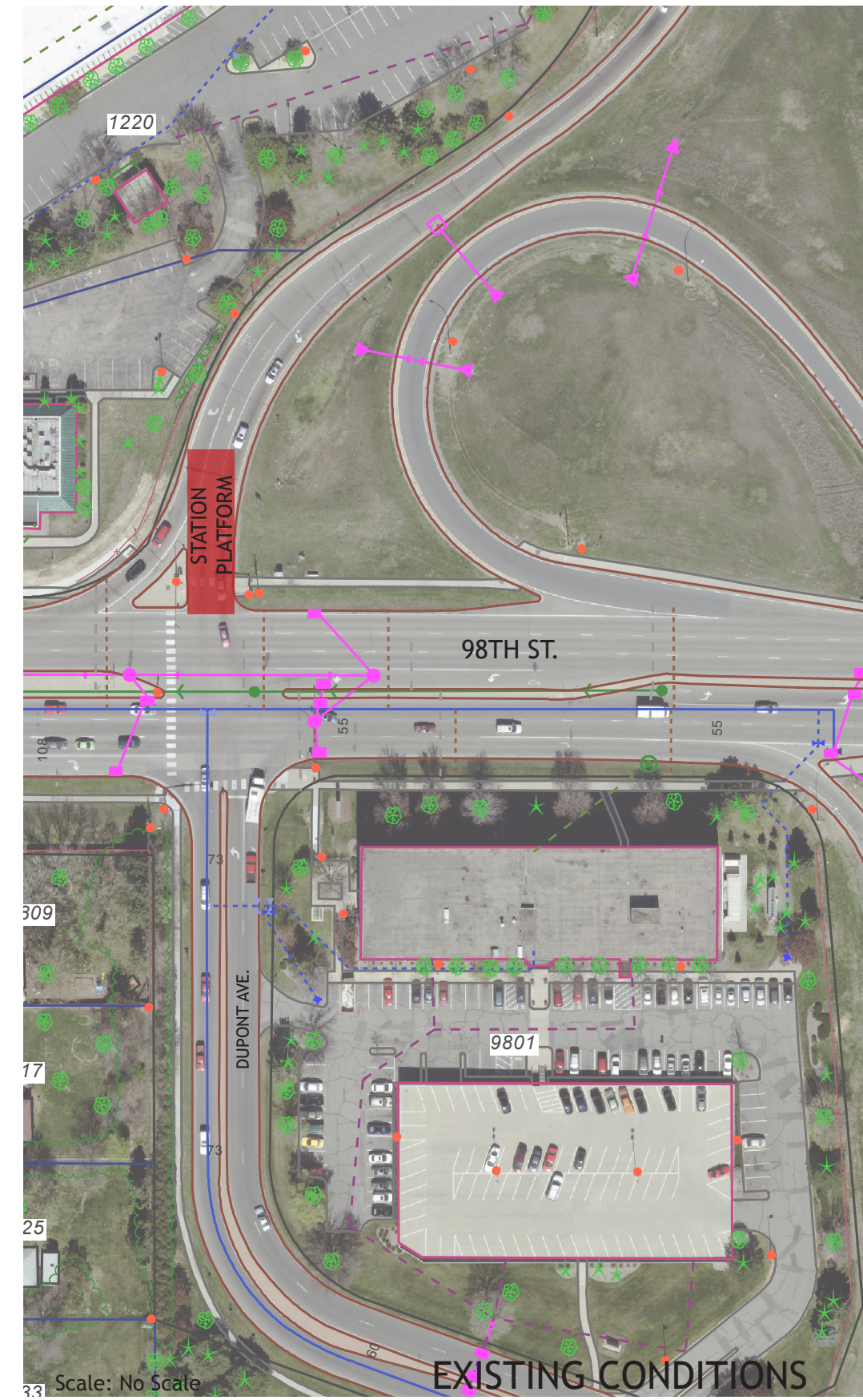
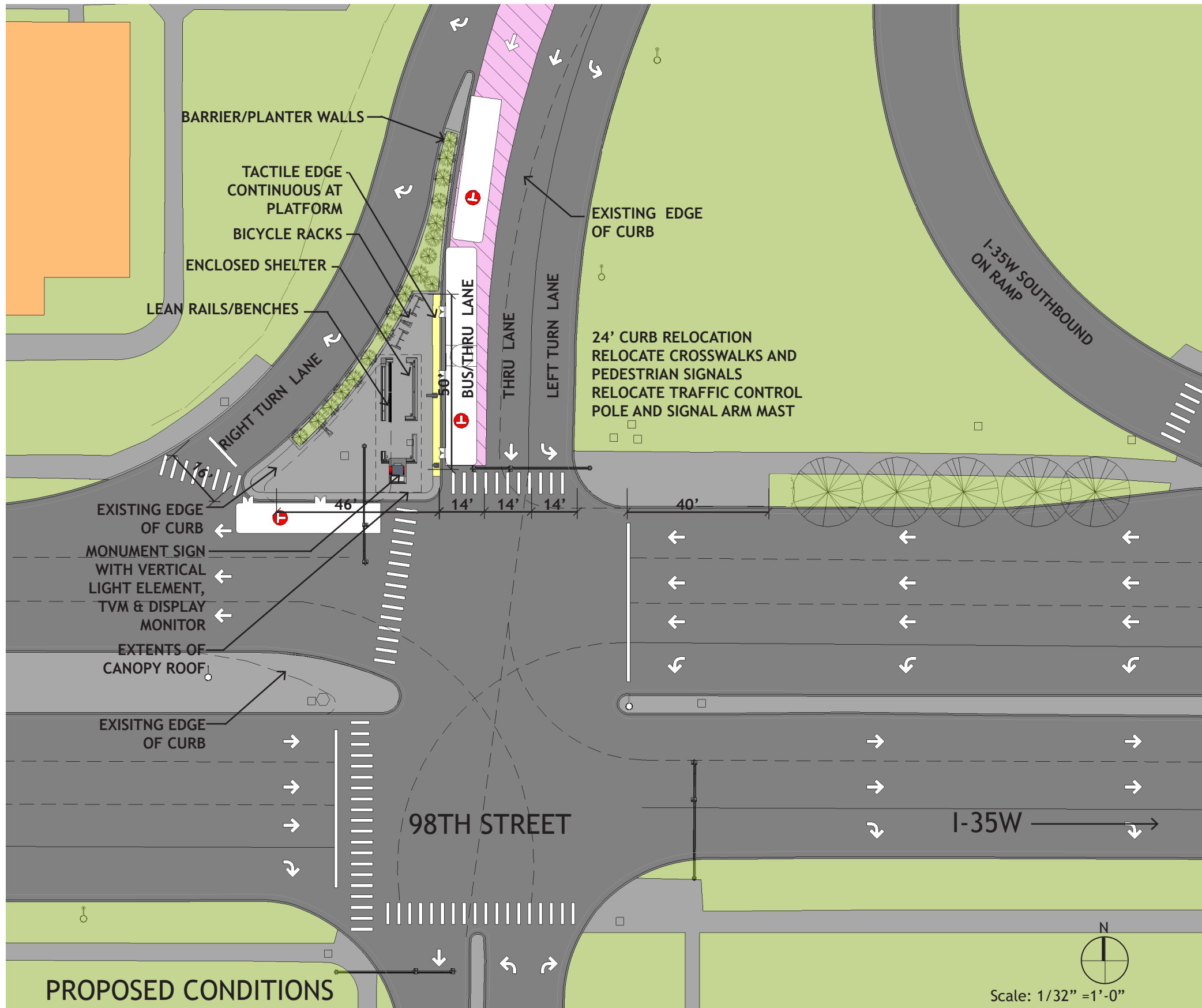


Orange Line BRT 98th Street
Bloomington, Minnesota

HAY DOBBS

DATE: 04 OCTOBER, 2013

SK. 24



PROJECT NO.: 10013.008



DATE: 04 OCTOBER, 2013

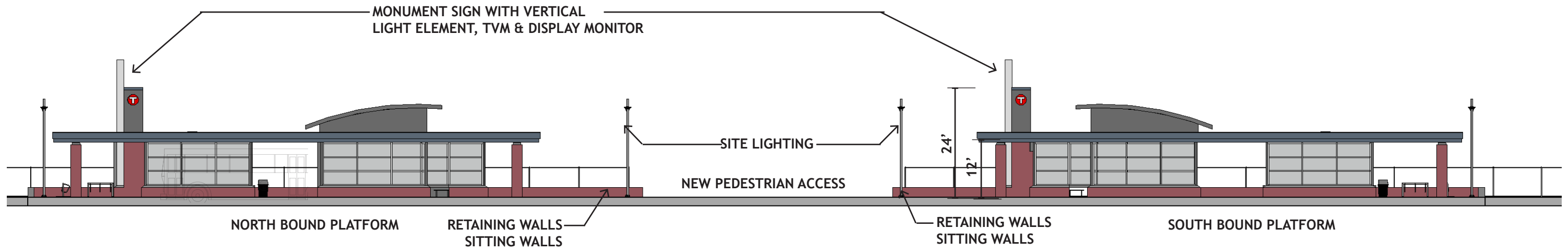
Southbound Concept E - Nearside Off Ramp

Orange Line BRT 98th Street

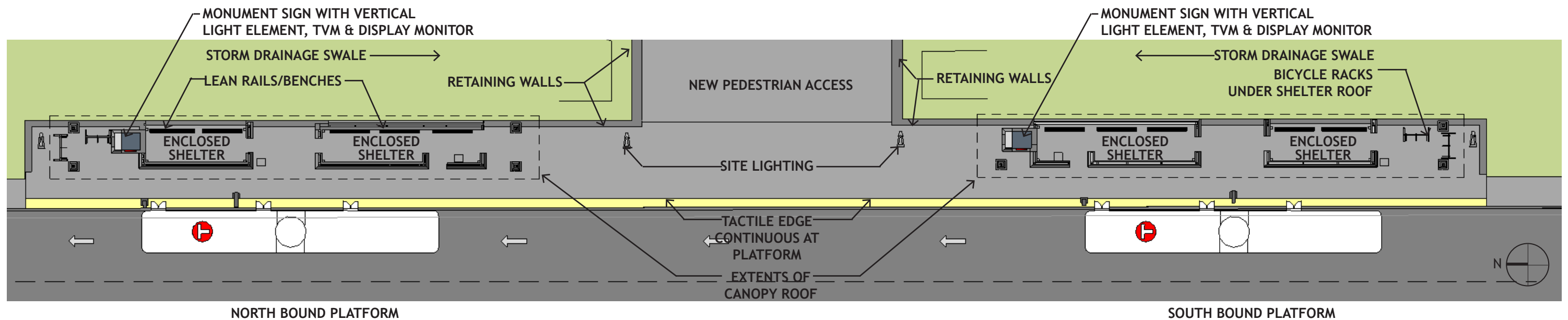
Bloomington, Minnesota



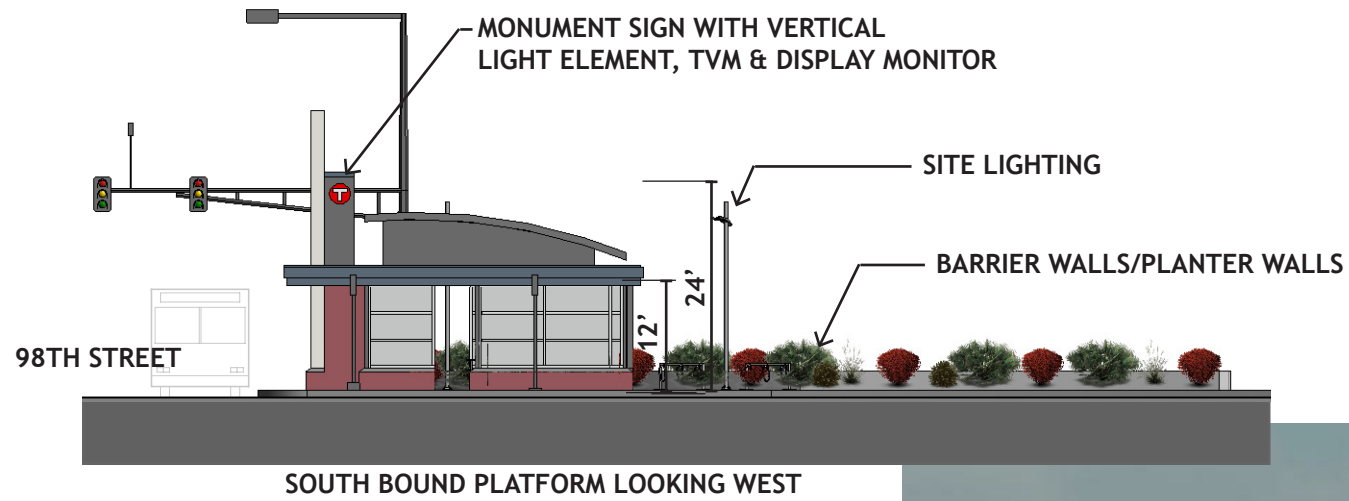
SK. 25



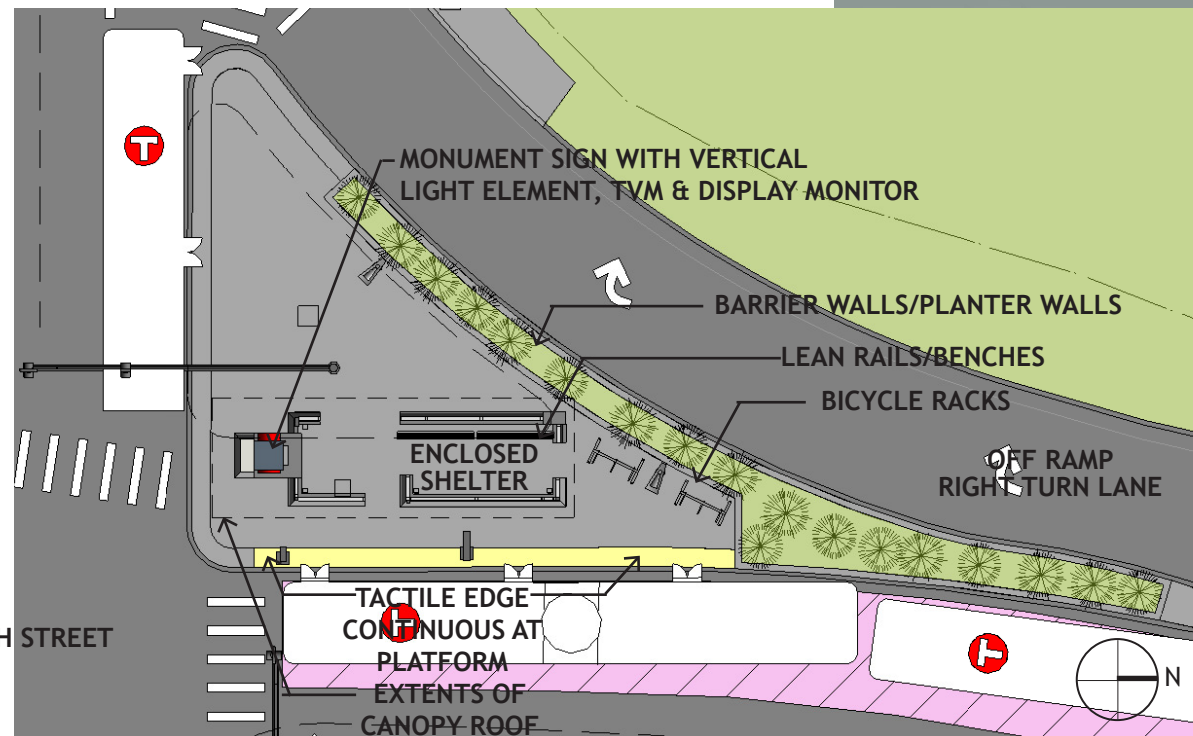
ENLARGED CONCEPT ELEVATIONS SCALE: 3/32" = 1'-0"



ENLARGED CONCEPT PLANS SCALE: 3/32" = 1'-0"



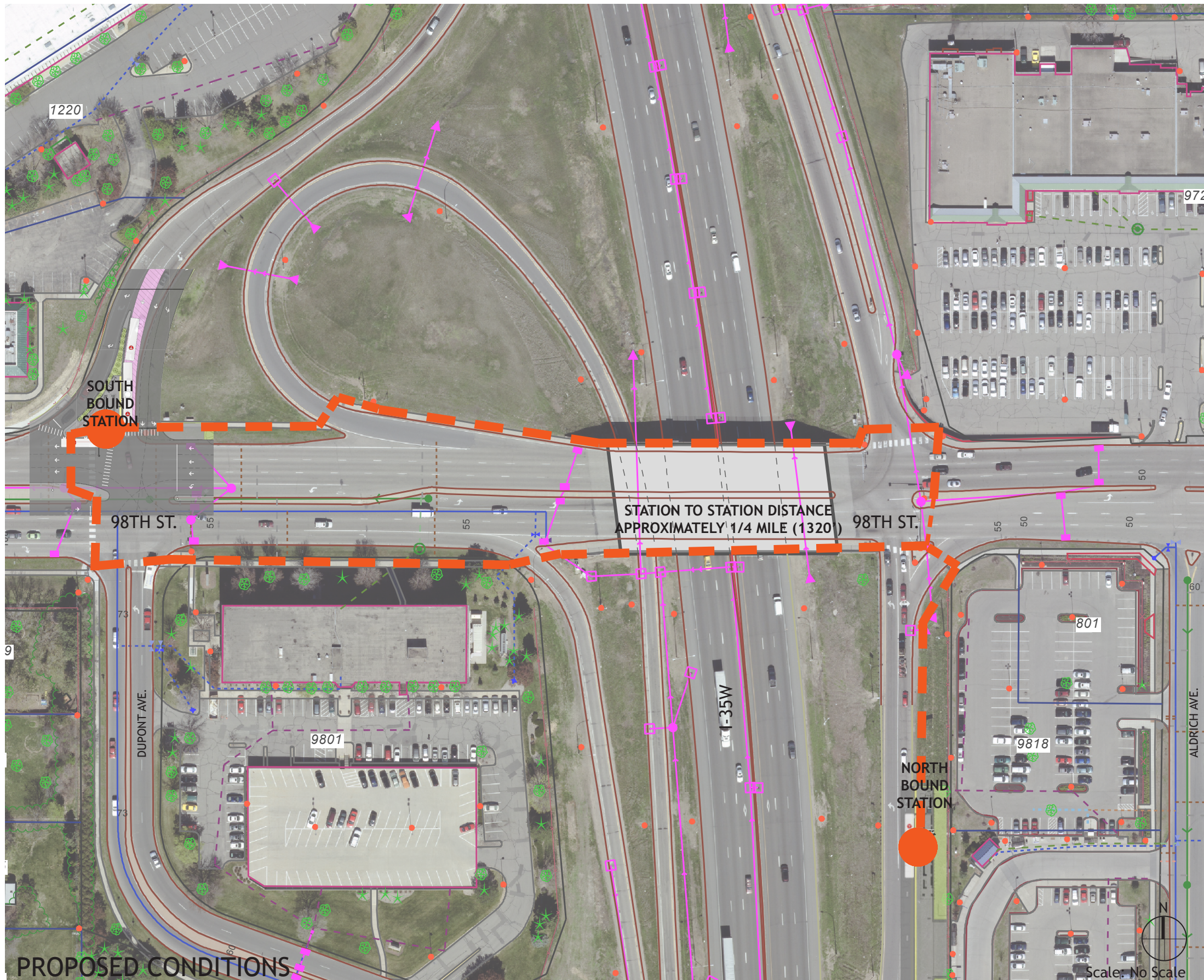
ENLARGED CONCEPT ELEVATIONS SCALE: 3/32" = 1'-0"



SOUTH BOUND PLATFORM
ENLARGED CONCEPT PLAN SCALE: 3/32" = 1'-0"



ILLUSTRATIVE CONCEPT PERSPECTIVE LOOKING NORTHEAST



PROJECT NO.: 10013.008



DATE: 04 OCTOBER, 2013

98TH STREET STATION CONCEPT CONNECTIONS

Orange Line BRT 98th Street
Bloomington, Minnesota

HAY DOBBS

SK. 28