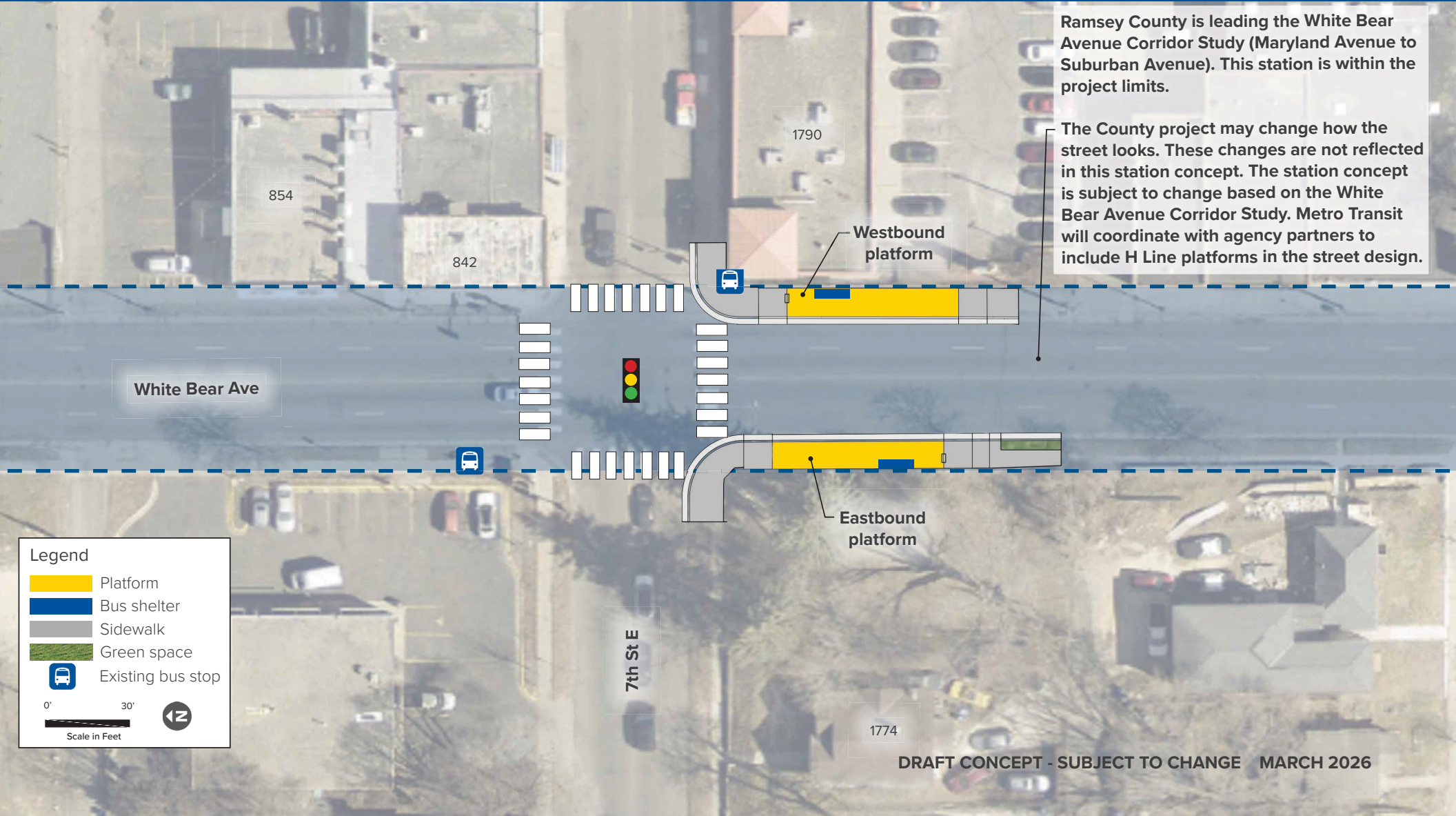


Ramsey County is leading the White Bear Avenue Corridor Study (Maryland Avenue to Suburban Avenue). This station is within the project limits.

The County project may change how the street looks. These changes are not reflected in this station concept. The station concept is subject to change based on the White Bear Avenue Corridor Study. Metro Transit will coordinate with agency partners to include H Line platforms in the street design.



Legend

- Platform
- Bus shelter
- Sidewalk
- Green space
- Existing bus stop

0' 30'
Scale in Feet

