

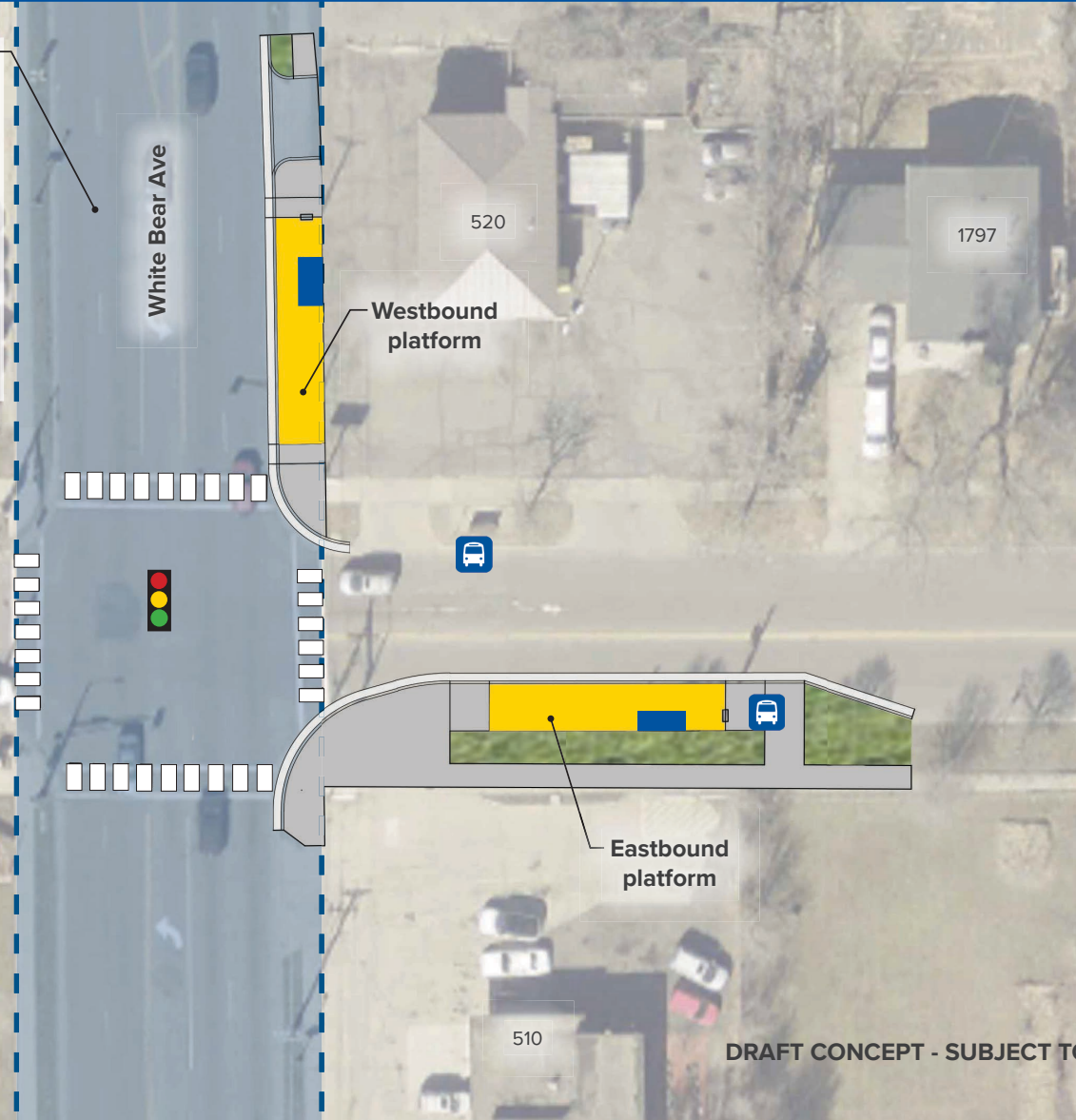
Ramsey County is leading the White Bear Avenue Corridor Study (Maryland Avenue to Suburban Avenue). This station is within the project limits.

The County project may change how the street looks. These changes are not reflected in this station concept. The station concept is subject to change based on the White Bear Avenue Corridor Study. Metro Transit will coordinate with agency partners to include H Line platforms in the street design.

Legend

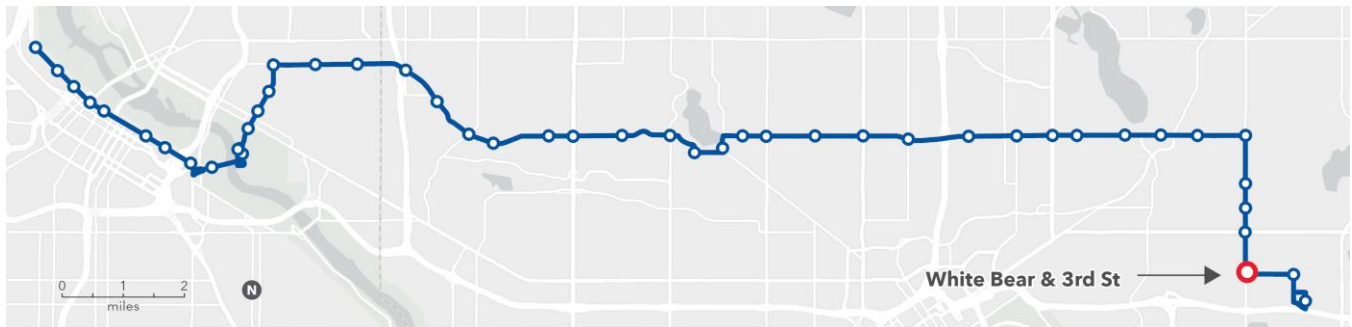
- Platform
- Bus shelter
- Sidewalk
- Green space
- Existing bus stop

0' 30' Scale in Feet



White Bear & 3rd Street

[Click here to take our survey by May 4, 2026.](#) Select each station you want to comment on when responding to the first question of the survey.



Station concept

The eastbound platform is on 3rd Street farside of the intersection with White Bear Avenue at the same location as the existing Route 80 bus stop. The westbound platform is on White Bear Avenue farside of the intersection with 3rd Street.

Station spacing

Distance from previous station: 0.4 miles from White Bear & Minnehaha

Distance to next station: 0.5 miles to 3rd St & Ruth

Transit connections

Routes 63 and 80

Destinations

Nokomis Montessori South Campus, St. Pascal Regional Catholic School, Harding High School, a convenience store, restaurants, and other small businesses, and several multifamily housing buildings along Hazel Street and Wilson Avenue

Coordinated projects

Ramsey County's White Bear Avenue Planning Study (Maryland Avenue to Suburban Avenue) is exploring changes to White Bear Avenue. Construction is planned for 2029-2030. For more details visit ramseycountymn.gov/residents/roads-transportation/current-road-projects/white-bear-avenue-corridor-study.