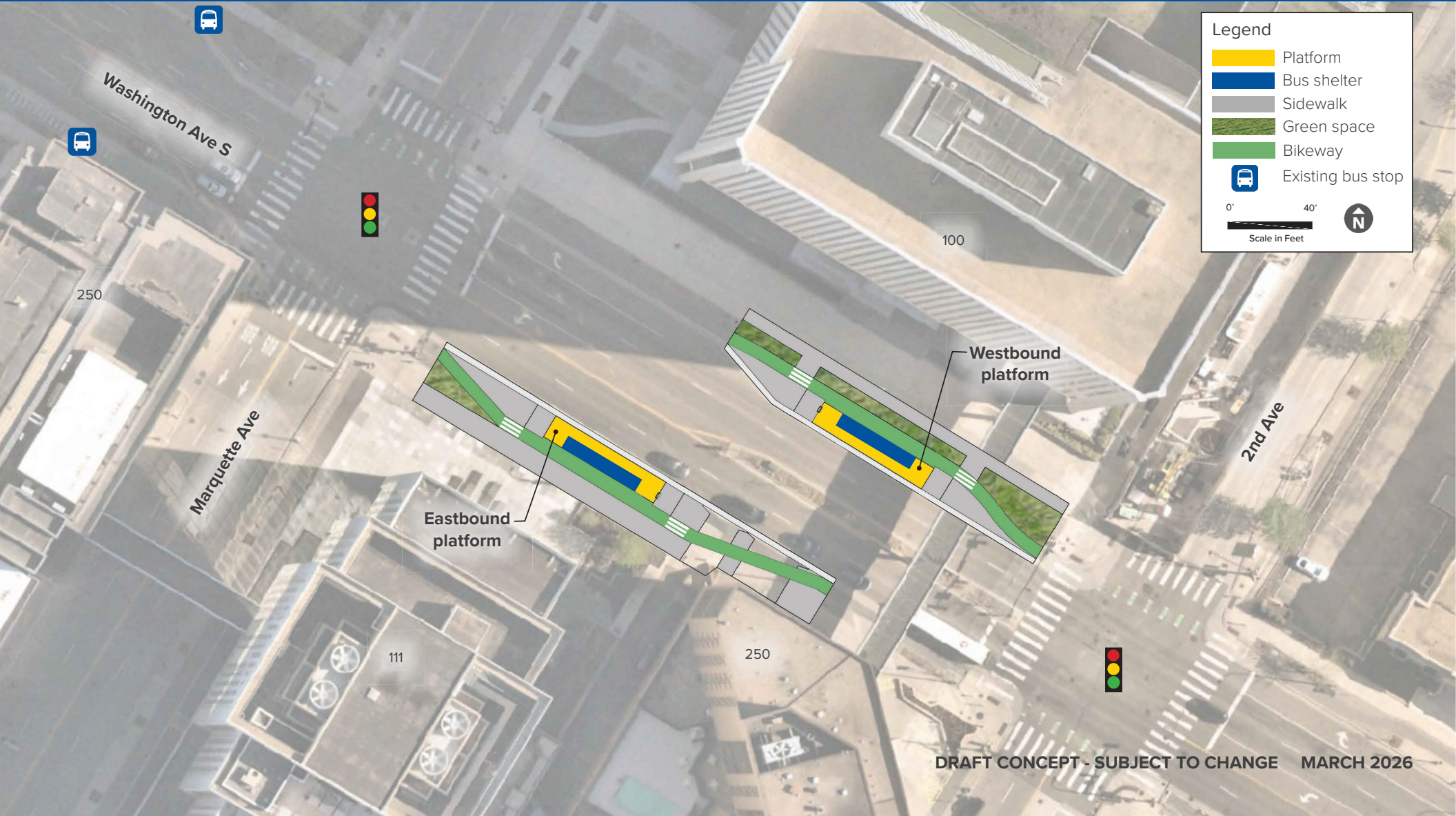


Washington & Marquette-2nd Avenue S



Legend

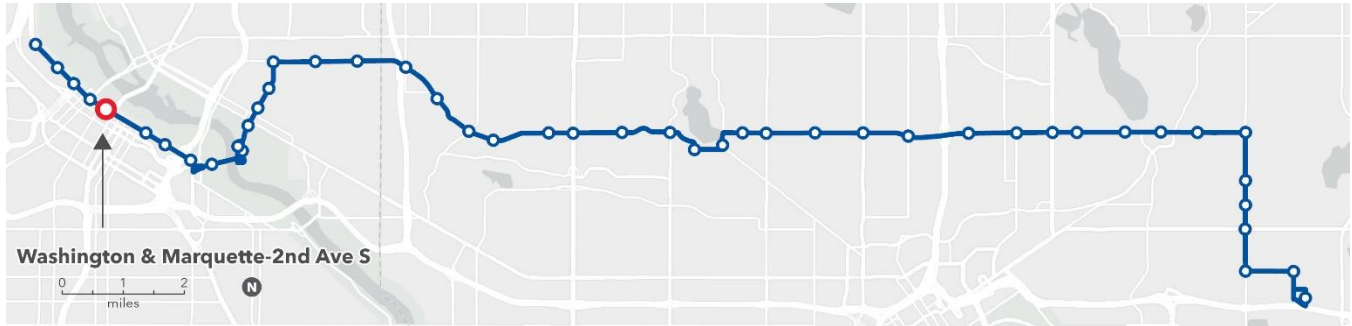
- Platform
- Bus shelter
- Sidewalk
- Green space
- Bikeway
- Existing bus stop

0' 40'

Scale in Feet

Washington & Marquette-2nd Avenue S

[Click here to take our survey by May 4, 2026.](#) Select each station you want to comment on when responding to the first question of the survey.



Station concept

The eastbound platform is farside of Marquette Avenue. The westbound platform is farside of 2nd Avenue S.

Station spacing

Distance from previous station: 0.2 miles from Washington & Hennepin

Distance to next station: 0.5 miles to Washington & Chicago

Transit connections

Routes 7, 10, 17, and 25, future METRO F Line. Several express and limited-stop routes serving the Marquette-2nd Avenue corridor.

Destinations

This station provides access to various destinations in the Downtown commercial district