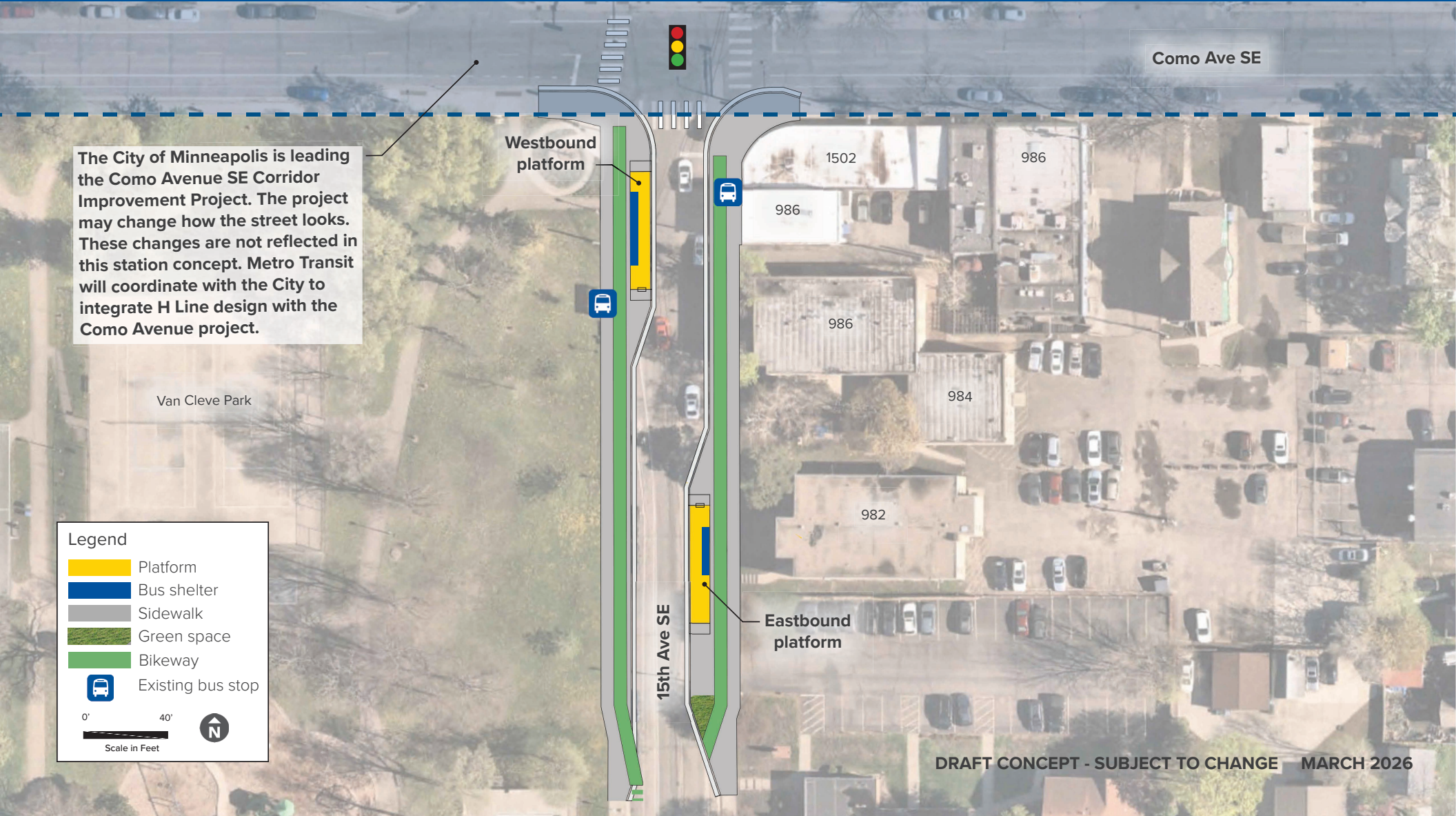


The City of Minneapolis is leading the Como Avenue SE Corridor Improvement Project. The project may change how the street looks. These changes are not reflected in this station concept. Metro Transit will coordinate with the City to integrate H Line design with the Como Avenue project.

Legend

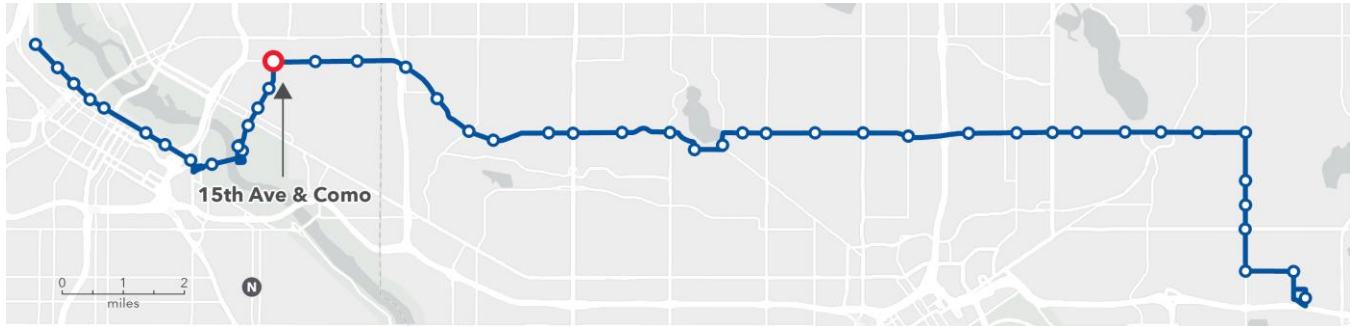
- Platform
- Bus shelter
- Sidewalk
- Green space
- Bikeway
- Existing bus stop

0' 40'
Scale in Feet



15th Avenue & Como

Click here to take our survey by May 4, 2026. Select each station you want to comment on when responding to the first question of the survey.



Station concept

The westbound platform is farside of the intersection at the same location as the existing Route 3 bus stop. The eastbound platform is mid-block between 15th Avenue and Brook Avenue.

Station spacing

Distance from previous station: 0.25 miles from 15th Avenue & 8th Street

Distance to next station: 0.5 miles to Como & 22nd Avenue

Transit connections

There are no other transit routes near this location

Destinations

Dinkytown and Como neighborhoods, nearby businesses, and Van Cleve Park

Coordinated projects

The City of Minneapolis's Como Avenue SE Corridor Improvement Project is planned for 2028-2029. These changes are not fully reflected in the H Line station concept. Metro Transit will coordinate with the City to include H Line platforms in the street design. For more details visit minneapolismn.gov/government/projects/como-av-se-corridor.