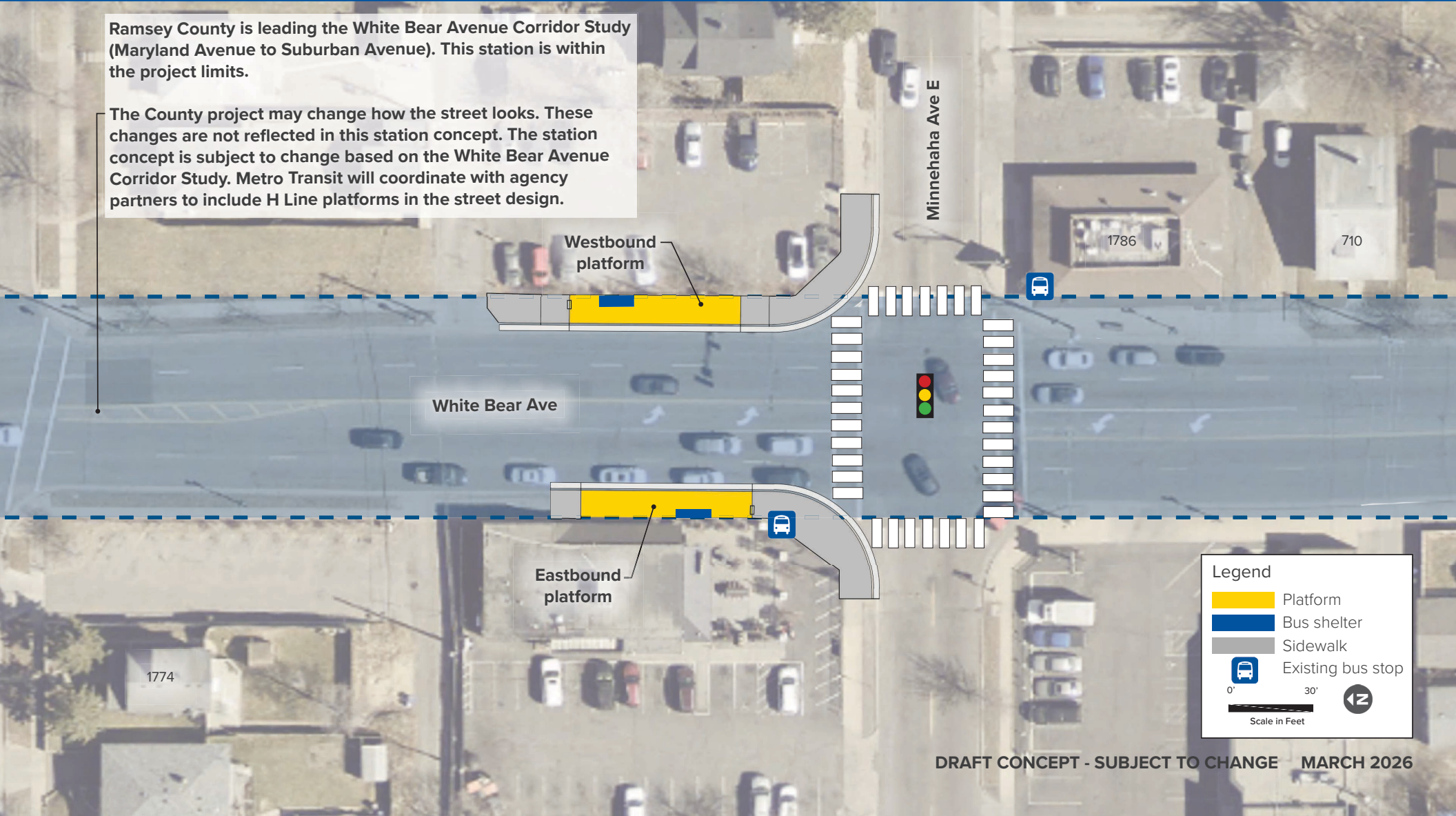
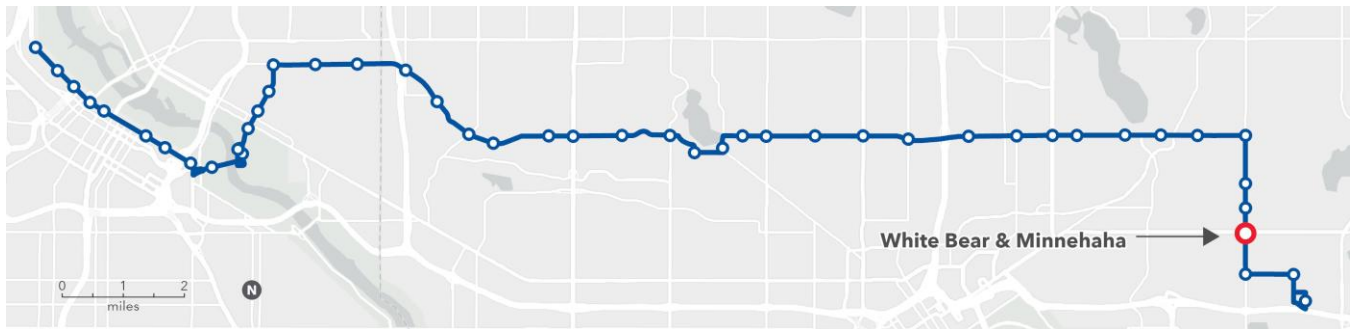


Ramsey County is leading the White Bear Avenue Corridor Study (Maryland Avenue to Suburban Avenue). This station is within the project limits.

The County project may change how the street looks. These changes are not reflected in this station concept. The station concept is subject to change based on the White Bear Avenue Corridor Study. Metro Transit will coordinate with agency partners to include H Line platforms in the street design.



White Bear & Minnehaha



Station concept

The eastbound platform is nearside of the intersection at the same location as the existing Route 80 bus stop. The westbound platform is farside of the intersection.

Station spacing

Distance from previous station: 0.25 miles from White Bear & 7th Street

Distance to next station: 0.4 miles to White Bear & 3rd Street

Transit connections

Route 80

Destinations

Restaurants, butcher shop, and other small businesses

Coordinated projects

Ramsey County's White Bear Avenue Planning Study (Maryland Avenue to Suburban Avenue) is exploring changes to White Bear Avenue. Construction is planned for 2029–2030. For more details visit ramseycountymn.gov/residents/roads-transportation/current-road-projects/white-bear-avenue-corridor-study.