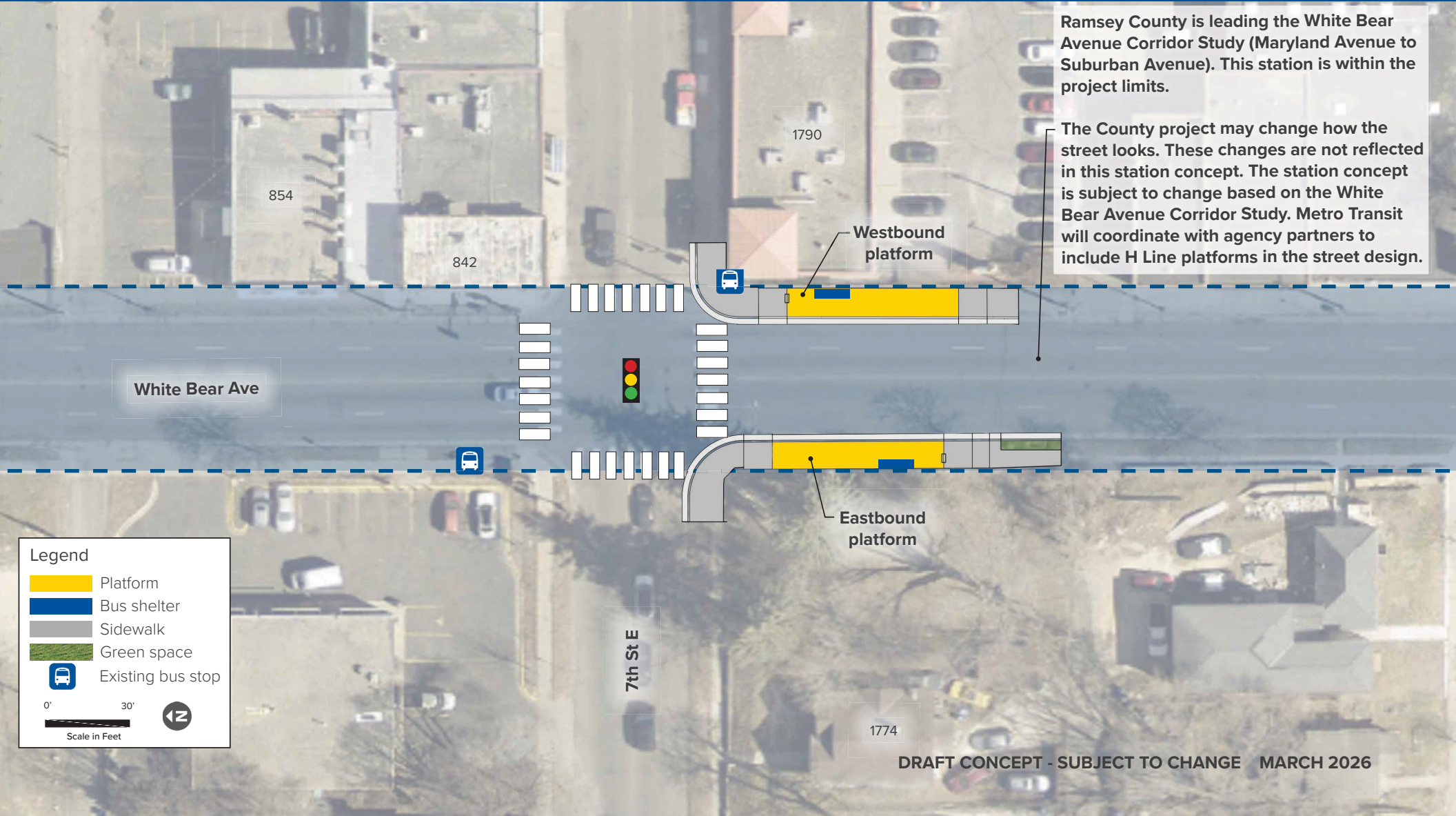


Ramsey County is leading the White Bear Avenue Corridor Study (Maryland Avenue to Suburban Avenue). This station is within the project limits.

The County project may change how the street looks. These changes are not reflected in this station concept. The station concept is subject to change based on the White Bear Avenue Corridor Study. Metro Transit will coordinate with agency partners to include H Line platforms in the street design.

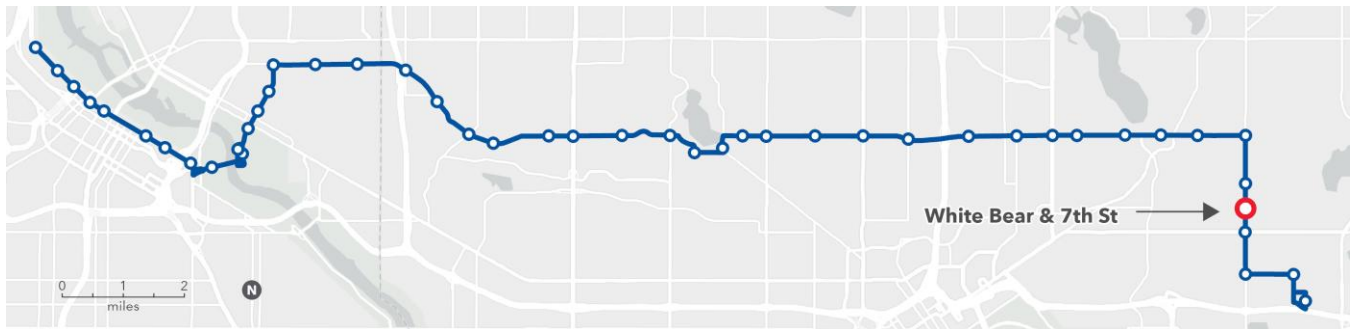


Legend

- Platform
- Bus shelter
- Sidewalk
- Green space
- Existing bus stop

0' 30'
Scale in Feet

White Bear & 7th Street



Station concept

The eastbound platform is farside of the intersection. The westbound platform is nearside of the intersection at the same location as the existing Route 80 bus stop.

Station spacing

Distance from previous station: 0.25 miles from White Bear & Case

Distance to next station: 0.25 miles to White Bear & Minnehaha

Transit connections

Routes 74 and 80

Destinations

Dentist office, multiple small grocery stores, and other small businesses

Coordinated projects

Ramsey County's White Bear Avenue Planning Study (Maryland Avenue to Suburban Avenue) is exploring changes to White Bear Avenue. Construction is planned for 2029–2030. For more details visit ramseycountymn.gov/residents/roads-transportation/current-road-projects/white-bear-avenue-corridor-study.