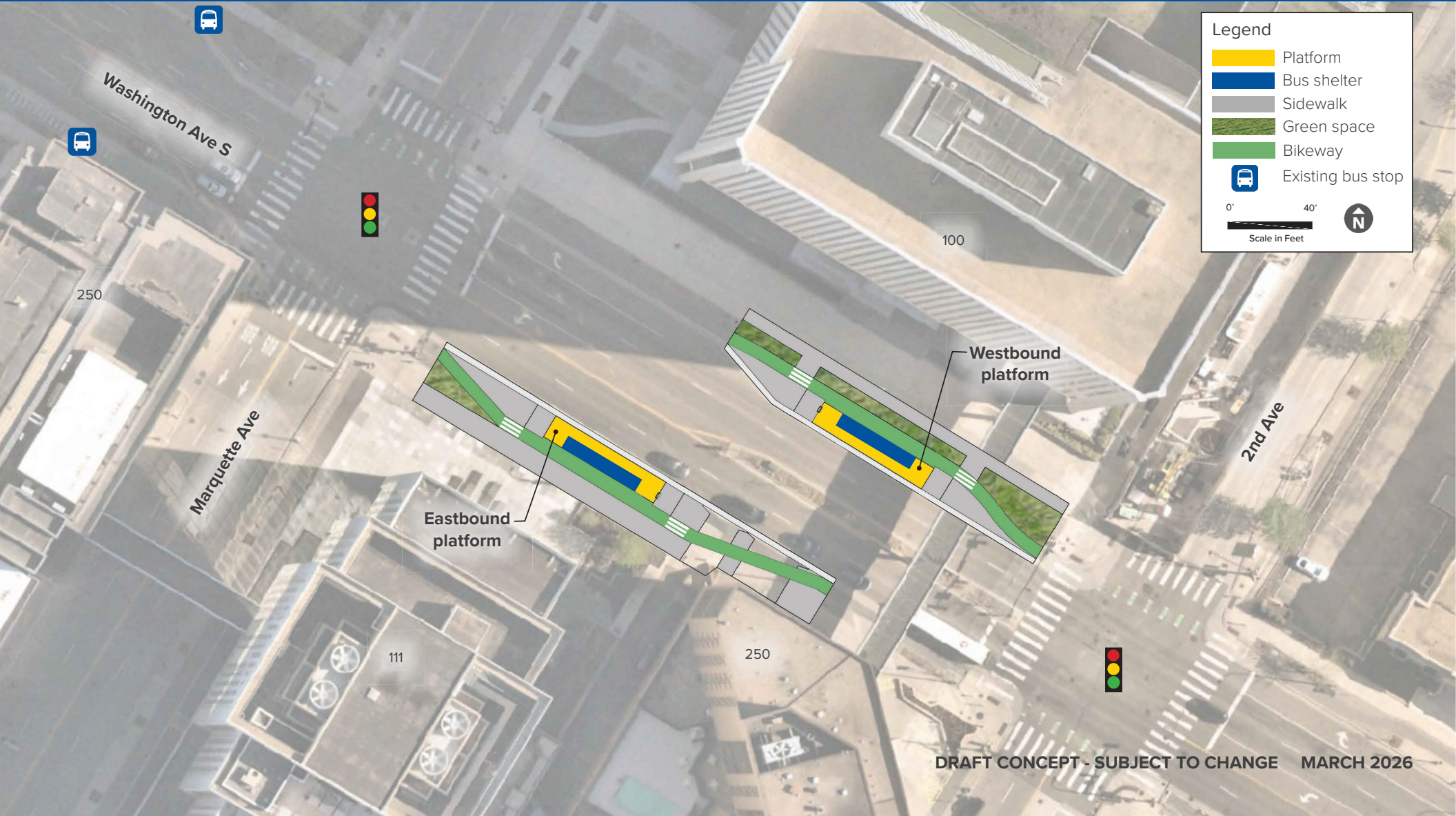


Washington & Marquette-2nd Avenue S



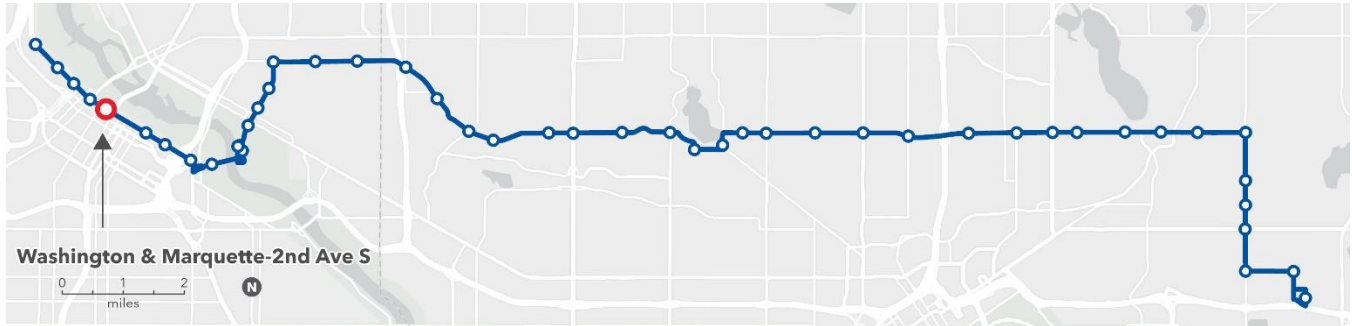
Legend

- Platform
- Bus shelter
- Sidewalk
- Green space
- Bikeway
- Existing bus stop

0' 40'

Scale in Feet

Washington & Marquette-2nd Avenue S



Station concept

The eastbound platform is farside of Marquette Avenue. The westbound platform is farside of 2nd Avenue S.

Station spacing

Distance from previous station: 0.2 miles from Washington & Hennepin

Distance to next station: 0.5 miles to Washington & Chicago

Transit connections

Routes 7, 10, 17, and 25, future METRO F Line. Several express and limited-stop routes serving the Marquette-2nd Avenue corridor.

Destinations

This station provides access to various destinations in the Downtown commercial district