





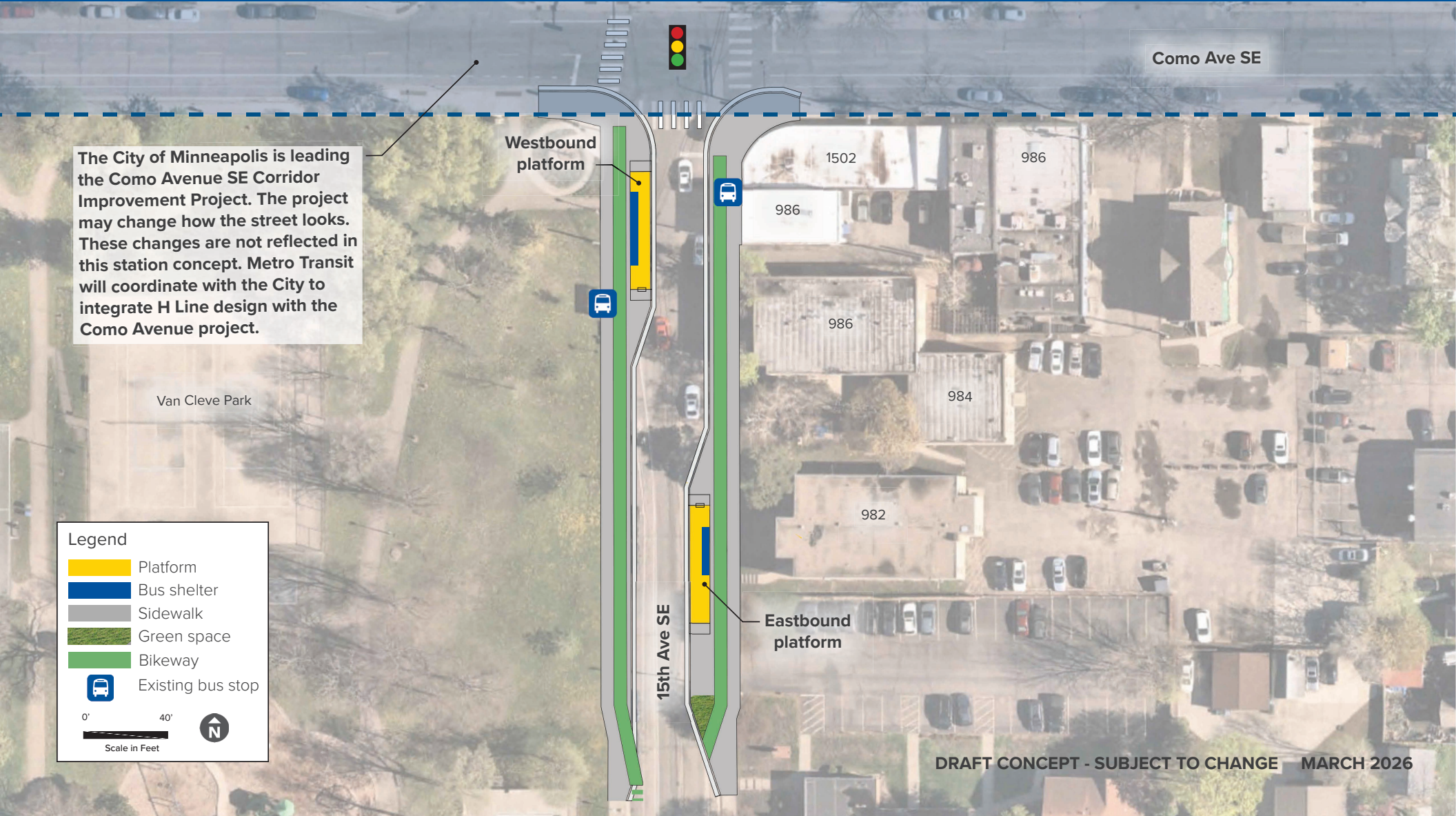



The City of Minneapolis is leading the Como Avenue SE Corridor Improvement Project. The project may change how the street looks. These changes are not reflected in this station concept. Metro Transit will coordinate with the City to integrate H Line design with the Como Avenue project.

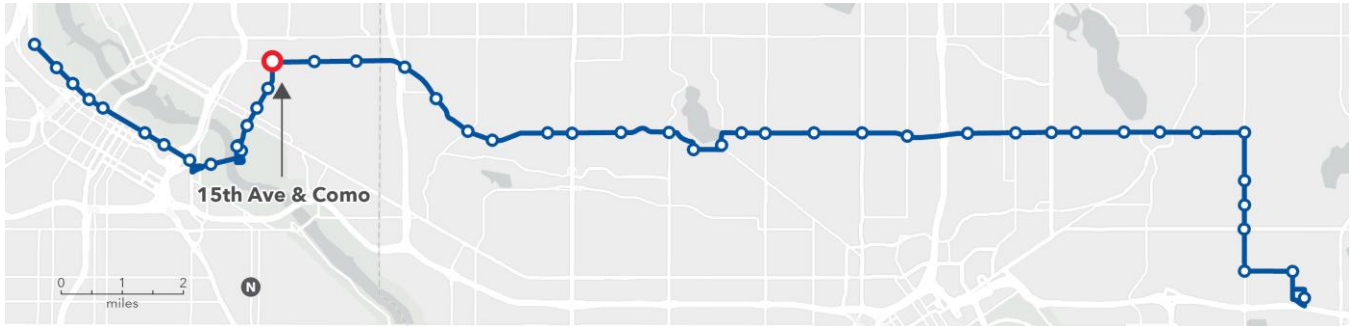
**Legend**

-  Platform
-  Bus shelter
-  Sidewalk
-  Green space
-  Bikeway
-  Existing bus stop

0' 40'  
Scale in Feet



# 15th Avenue & Como



## *Station concept*

The westbound platform is farside of the intersection at the same location as the existing Route 3 bus stop. The eastbound platform is mid-block between 15th Avenue and Brook Avenue.

## *Station spacing*

Distance from previous station: 0.25 miles from 15th Avenue & 8th Street

Distance to next station: 0.5 miles to Como & 22nd Avenue

## *Transit connections*

There are no other transit routes near this location

## *Destinations*

Dinkytown and Como neighborhoods, nearby businesses, and Van Cleve Park

## *Coordinated projects*

The City of Minneapolis's Como Avenue SE Corridor Improvement Project is planned for 2028-2029. These changes are not fully reflected in the H Line station concept. Metro Transit will coordinate with the City to include H Line platforms in the street design. For more details visit [minneapolismn.gov/government/projects/como-av-se-corridor](https://minneapolismn.gov/government/projects/como-av-se-corridor).