



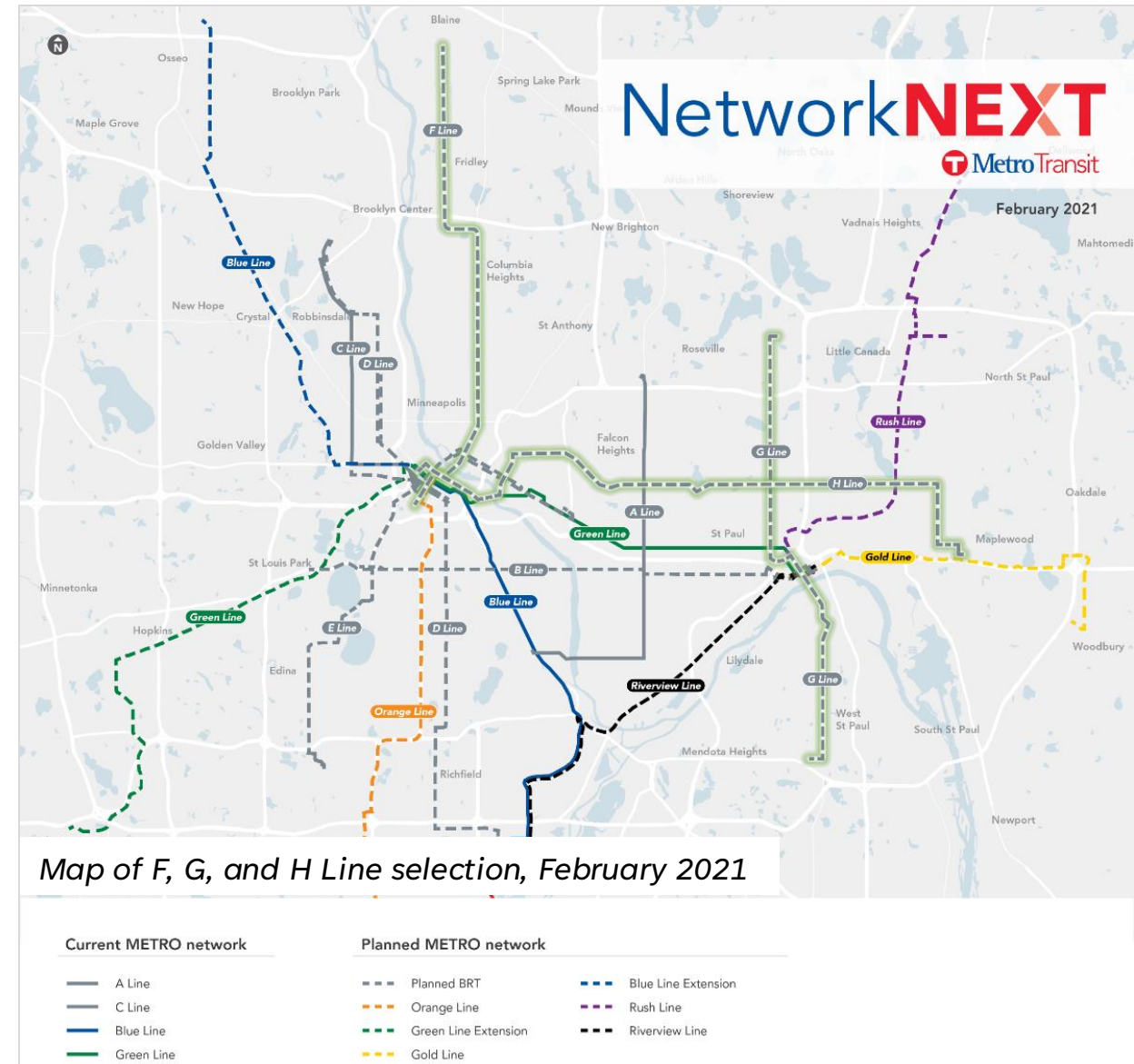
METRO H Line Draft Corridor Plan

St. Anthony Park Community Council Transportation Committee
April 28, 2026



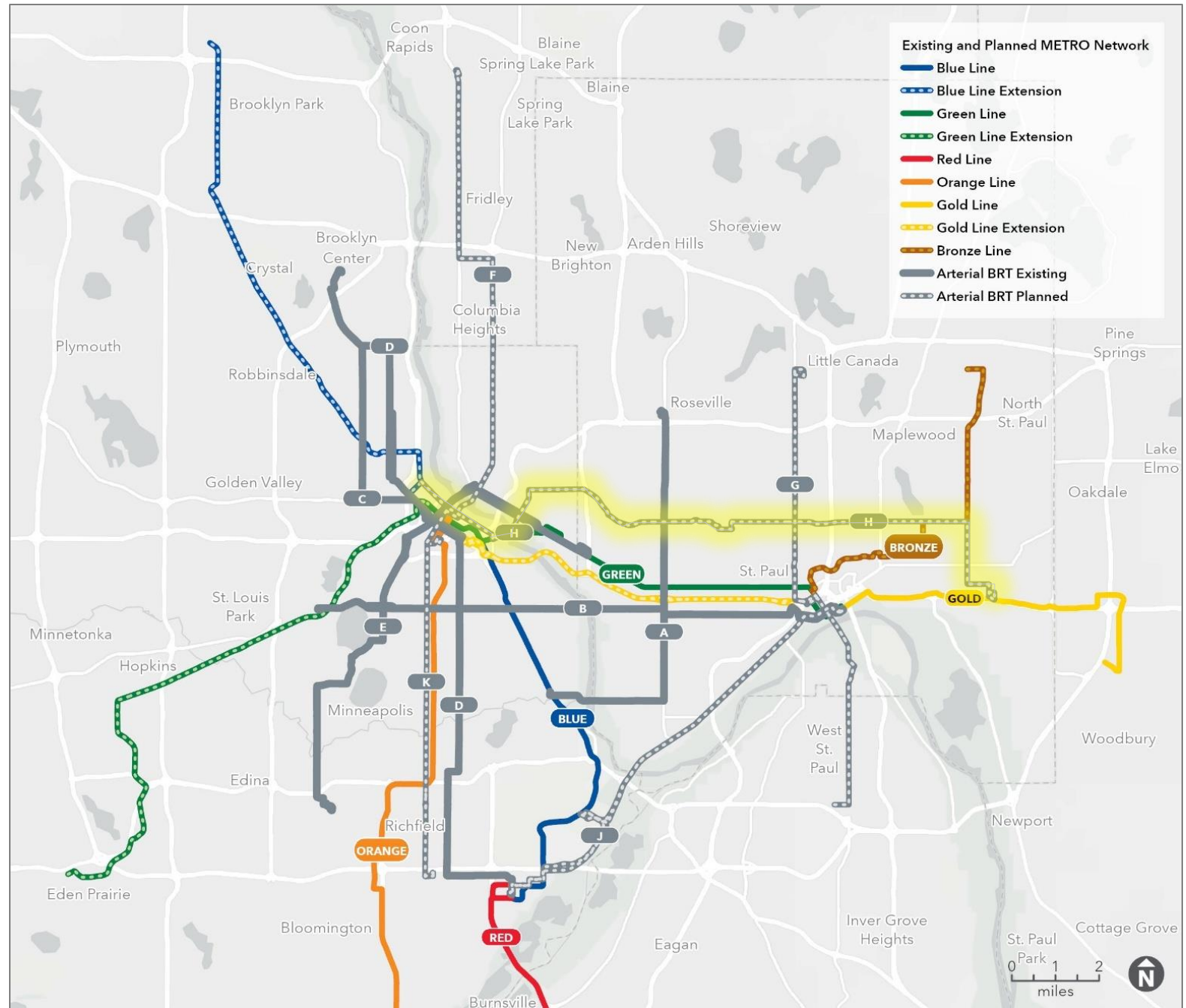
H Line identification history

- 2019-2021: Network Next established the next three BRT lines (F, G, and H lines)
 - Four step process evaluated 19 candidate corridors, narrowed down to identify three
 - Multiple technical evaluation and engagement periods between Fall 2019 and Spring 2021
- March 2021: Como/Maryland corridor identified as the METRO H Line and adopted by the Metropolitan Council
- H Line subsequently adopted into the regional Transportation Policy Plan



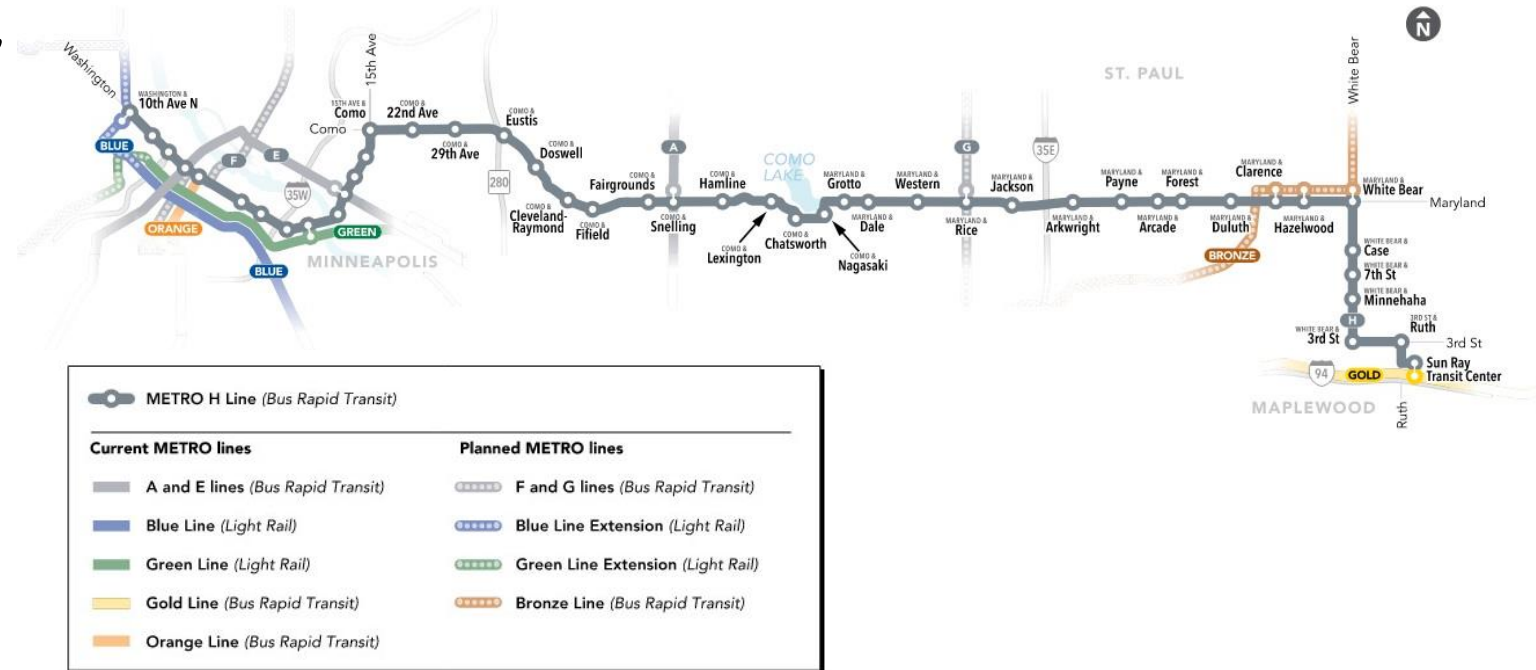
METRO H Line

- 8th arterial BRT line in the METRO network
- Downtown Minneapolis to Sun Ray Transit Center on Saint Paul's East Side
- New crosstown service filling a gap along Maryland Ave
- Connects to existing and Planned METRO lines
 - A Line, E Line, Gold Line and Green Line
 - Future F Line, G Line, Bronze Line, and Blue Line Extension



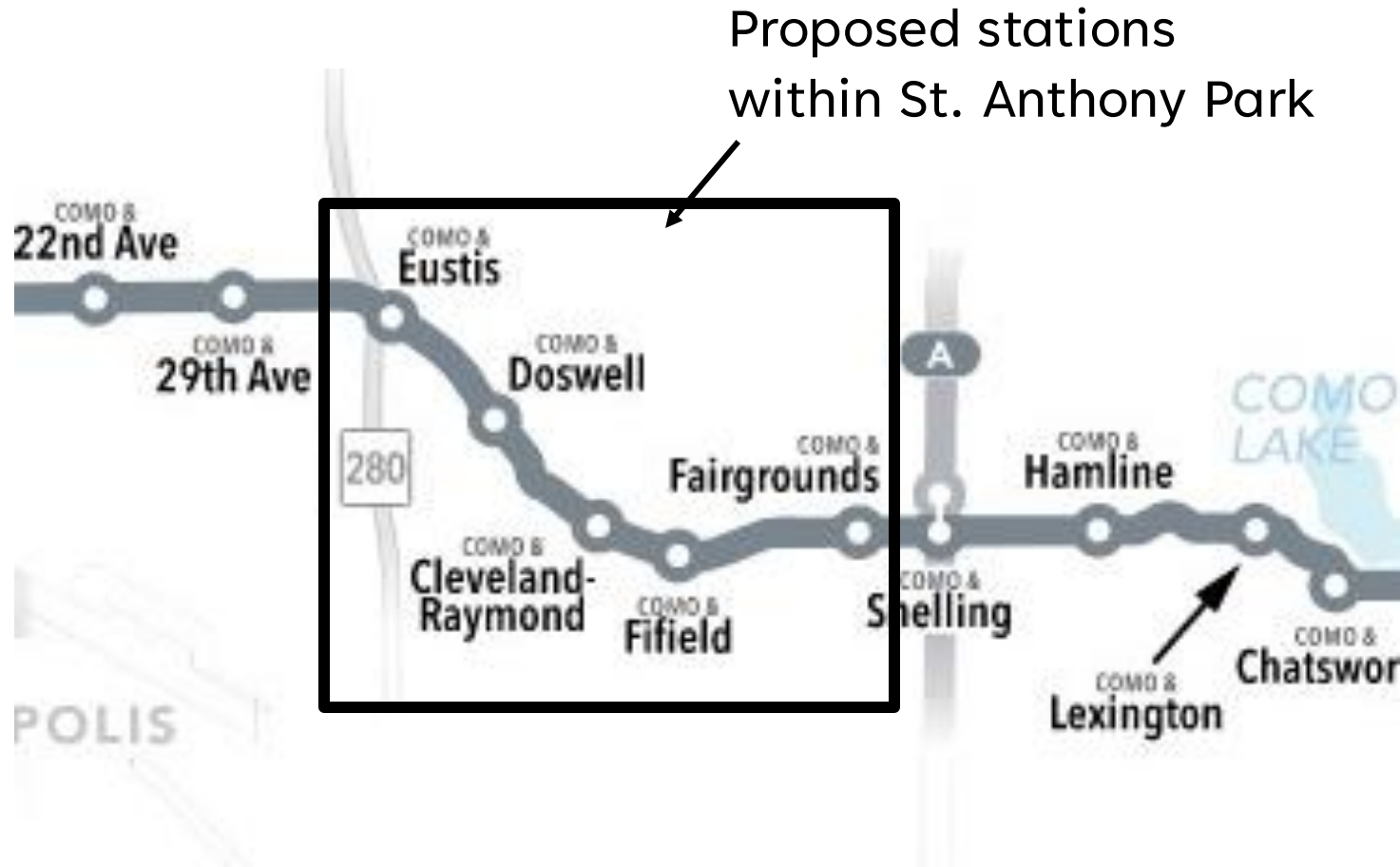
METRO H Line bus rapid transit

- Fast, frequent, all-day service
- 17-mile BRT line
 - Primarily on Washington, Como, Maryland, and White Bear avenues
- 45 proposed BRT stations
 - 3 shared with Bronze Line on Maryland Avenue
- Planned to upgrade and replace existing Route 3 and 80, with modifications to other routes



METRO H Line bus rapid transit

- Fast, frequent, all-day service
- 17-mile BRT line
 - Primarily on Washington, Como, Maryland, and White Bear avenues
- 45 proposed BRT stations
 - 3 shared with Bronze Line on Maryland Avenue
- Planned to upgrade and replace existing Route 3 and 80, with modifications to other routes



A faster, more reliable ride



1/8 mile between stops



1/3 to 1/2 mile between stations

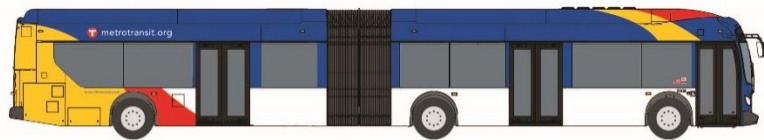
2-3 stations per mile for less stopping and faster trips



Near-level curb for faster and more accessible boarding



Fares paid before getting on the bus



All door boarding for quicker stops



Transit signal priority to keep buses moving



Faster, frequent, all-day service

An improved experience at the station and on the bus



A: Pylon Markers

B: Real-time NexTrip signs w/ on-demand audible announcements

C: Shelters

D: Ticket machines & fare card readers

E: Emergency telephone

F: Trash and recycling containers

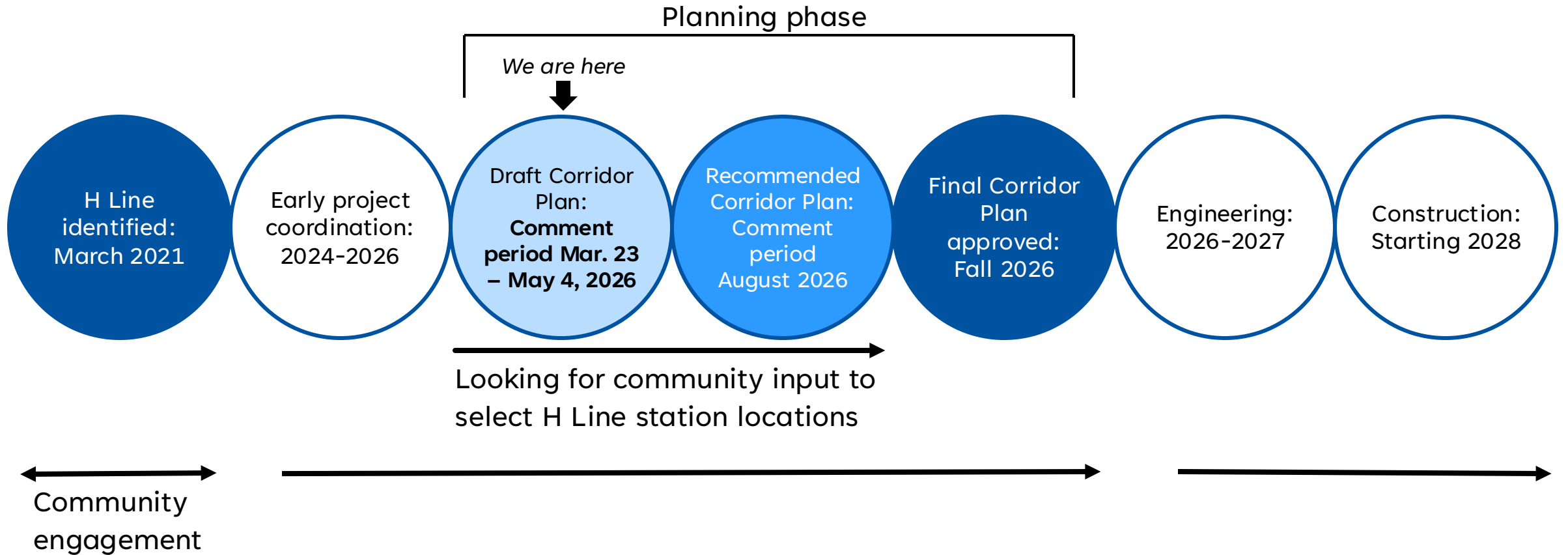
G: Textured warning strip

H: Platform is dark gray concrete pattern

I: Benches

J: Bike parking

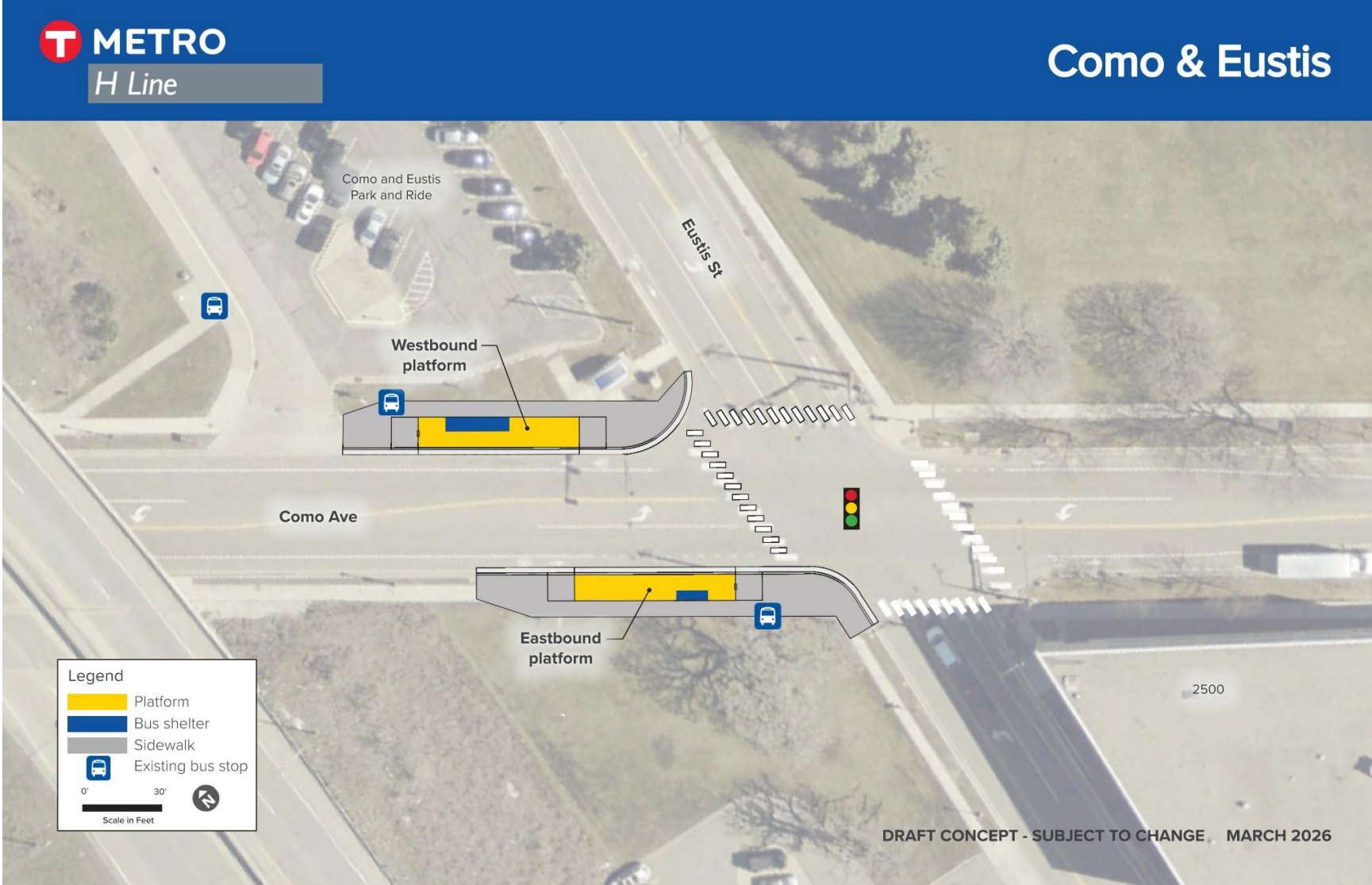
H Line project schedule



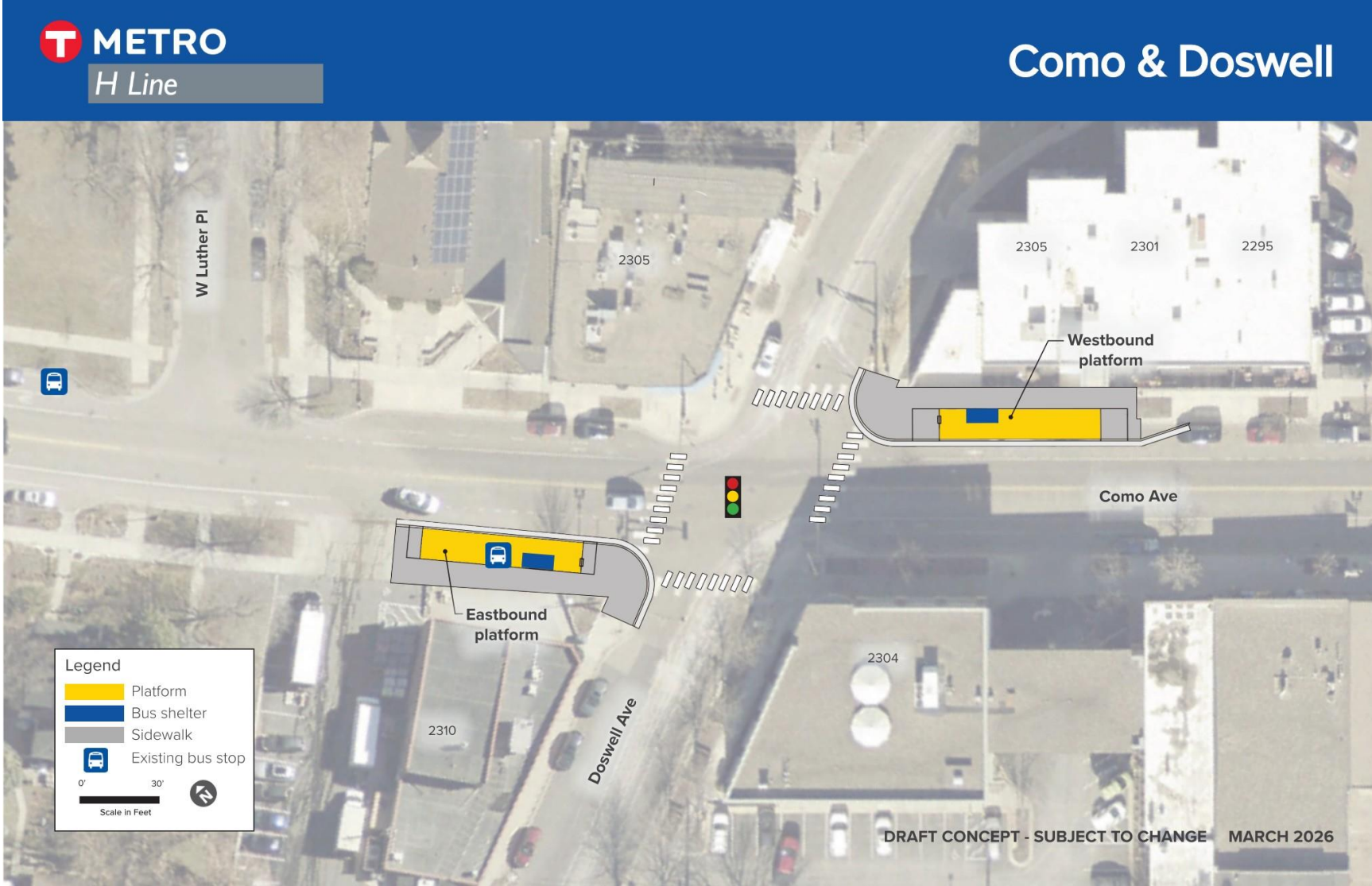
Planning phase – focus is on station locations

- Identify, evaluate, and finalize **station and platform locations**
- **Corridor Plan** establishes policy basis for H Line station locations
- **Engage riders and the public**
 - Share information about the project and how to participate
 - Collect input and feedback to shape the contents of the Corridor Plan
- Gather input and coordinate with agency and public partners
 - Saint Paul, Ramsey County, Minneapolis, Hennepin County, MnDOT, U of M, MPRB

Como & Eustis



Como & Doswell



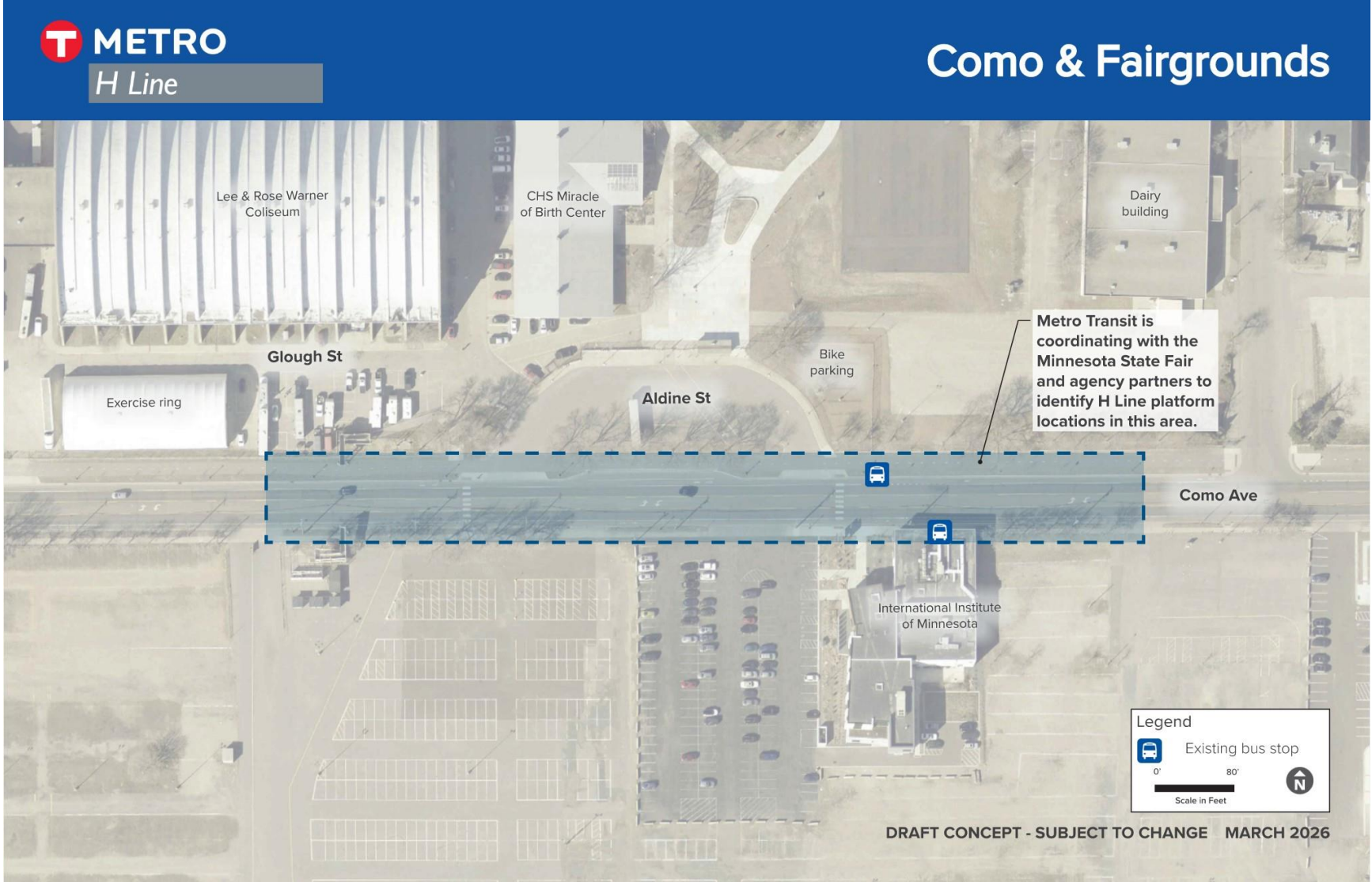
Como & Cleveland-Raymond



Como & Fifield

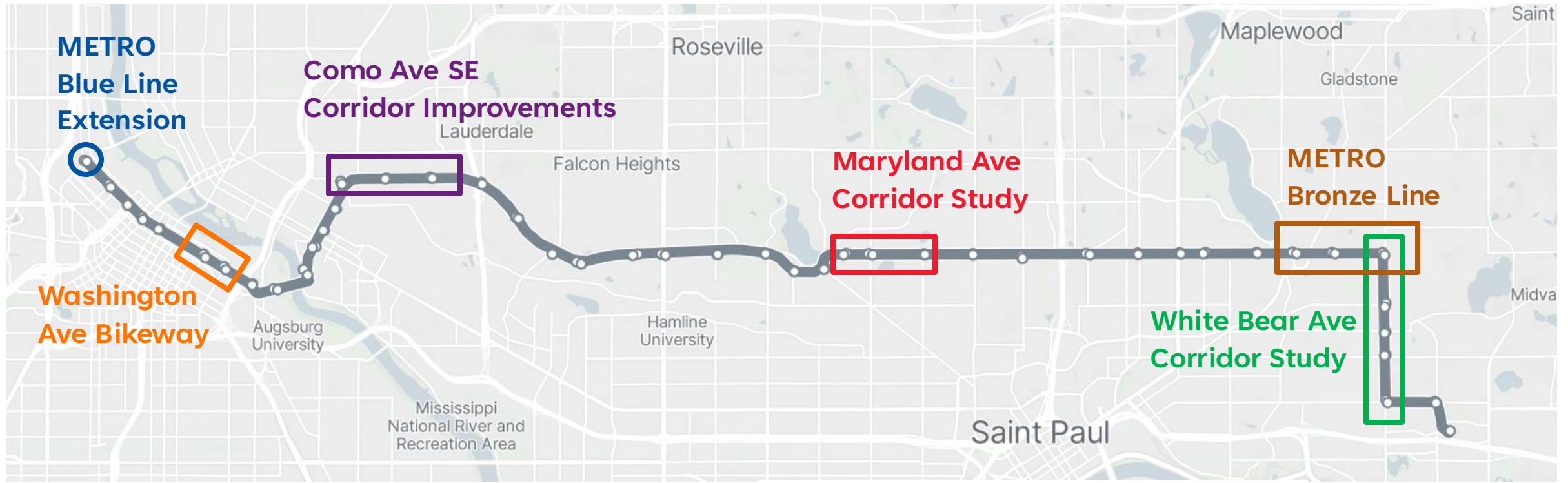


Como & Fairgrounds



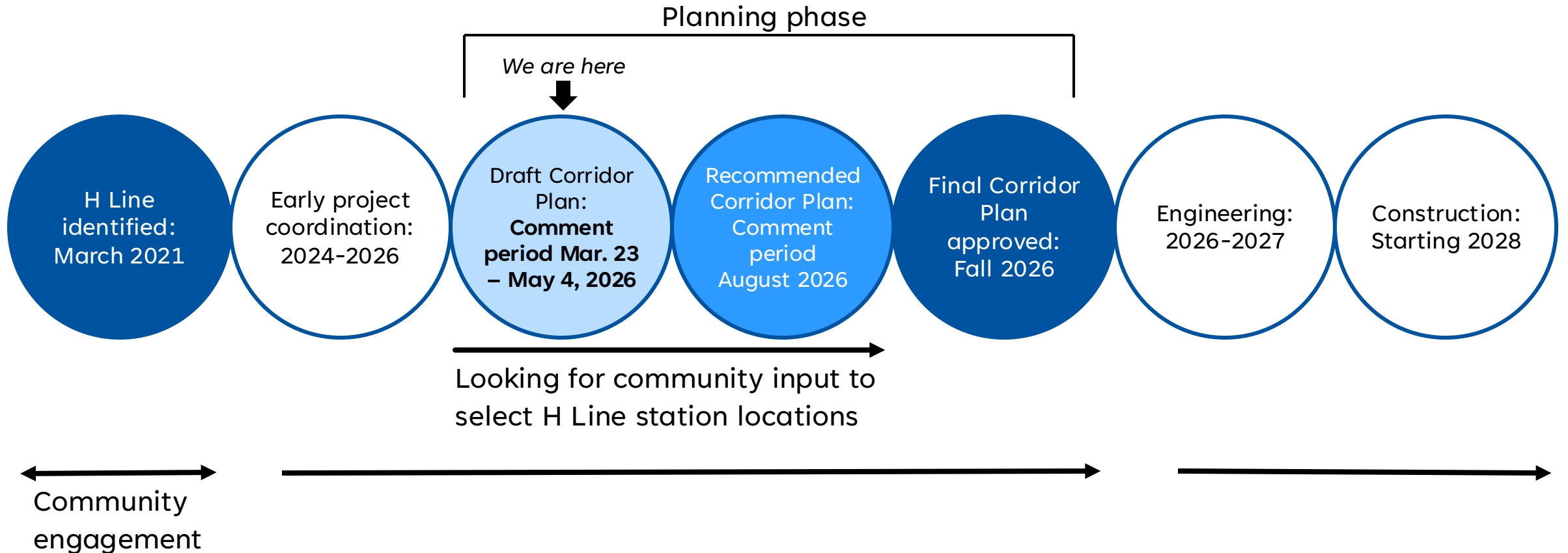
Project partners

- Partnerships with other agencies are critical to H Line project
- Coordinating planning and engagement with separate projects in the corridor



Major coordinated projects included

H Line project schedule



Help us plan H Line station locations

- metrotransit.org/h-line-project
- Review the **Draft Corridor Plan** and share your feedback
 - Complete our survey
 - HLine@metrotransit.org
- Comment by **May 4**
- Sign up for the H Line Update newsletter



Thank you!

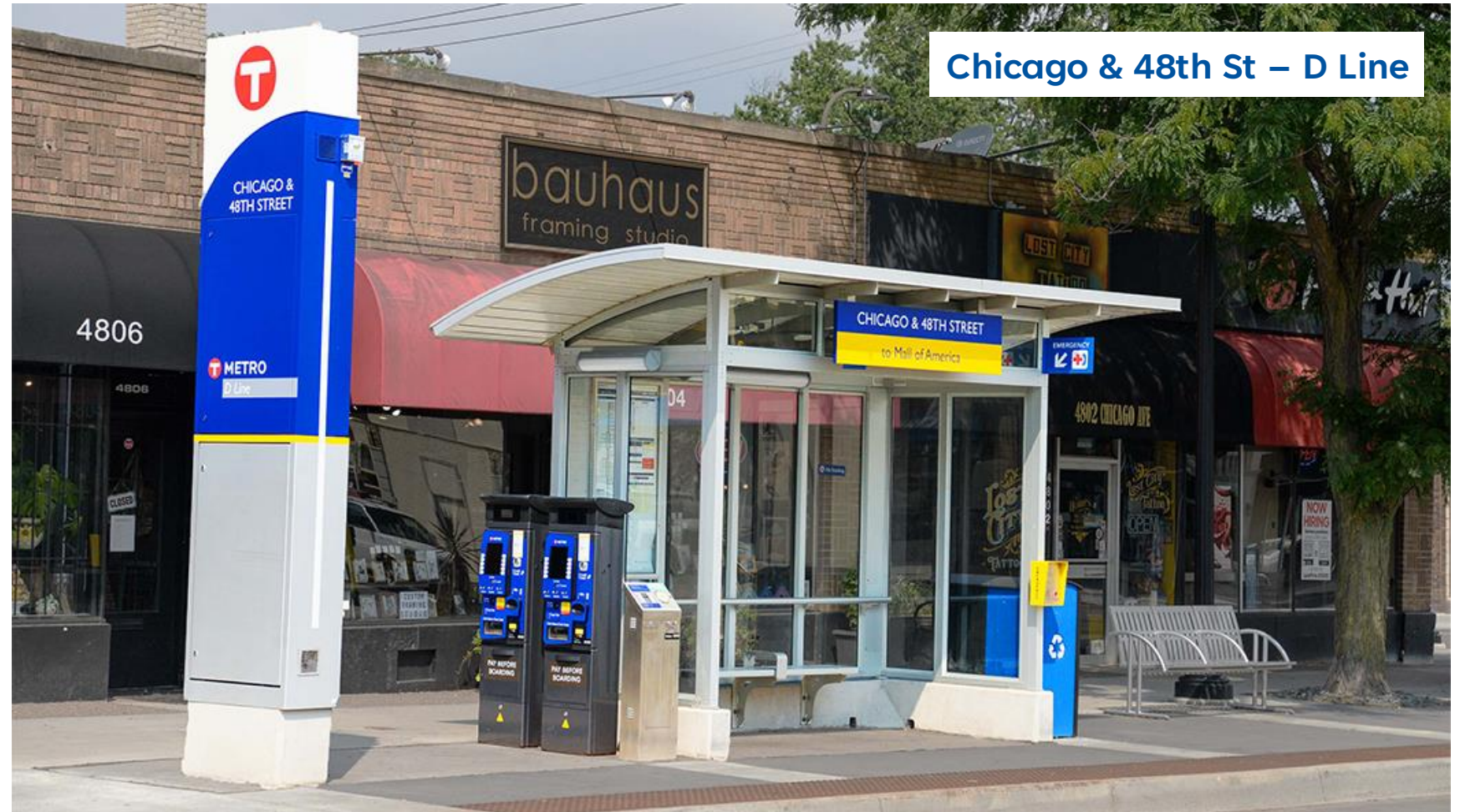
Greta Kurtz

Jake Knight

HLine@metrotransit.org

Arterial BRT stations

- Standard elements and amenities
- Responsive to surrounding context
- Shelters sized based on demand



Chicago & 48th St



France & 50th (Edina) northbound



France & 50th (Edina) southbound



44th & France



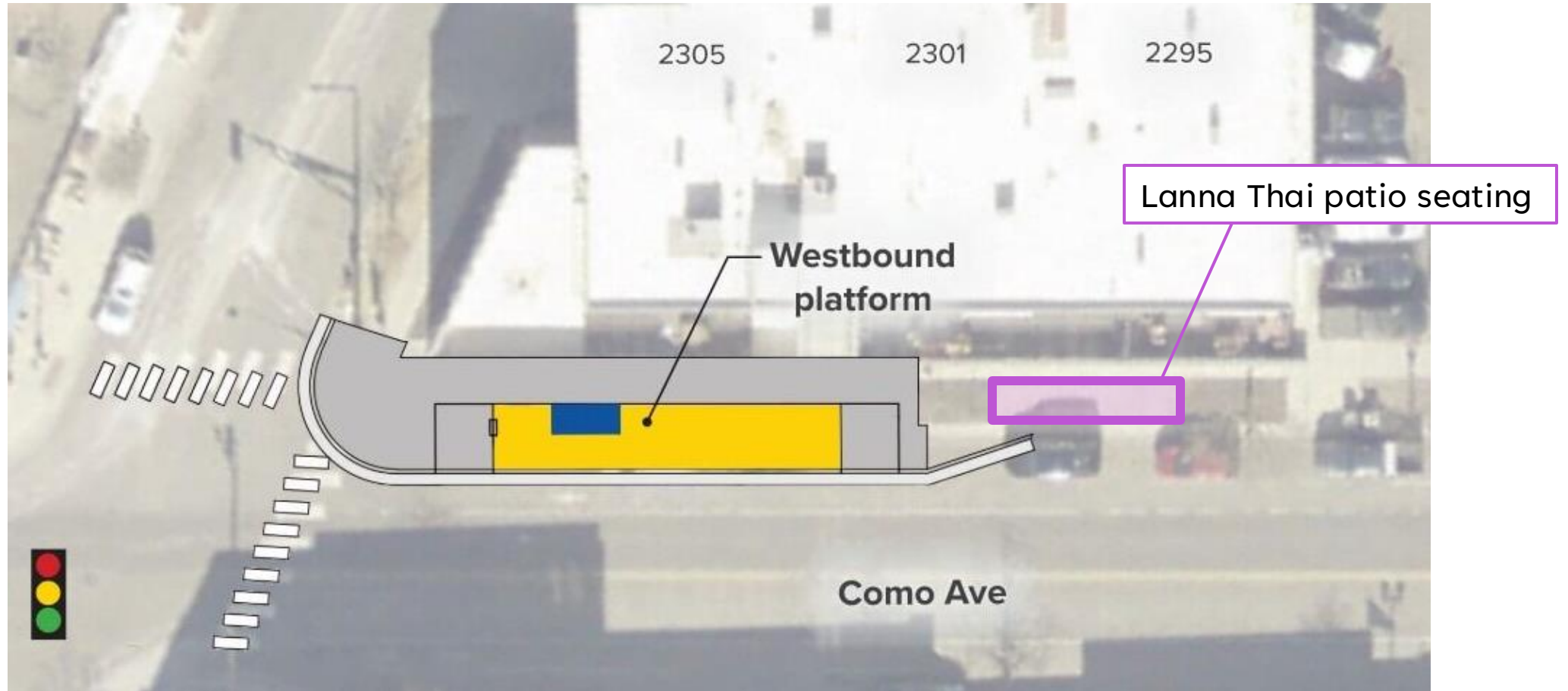
44th & France



Sheridan & 43rd St



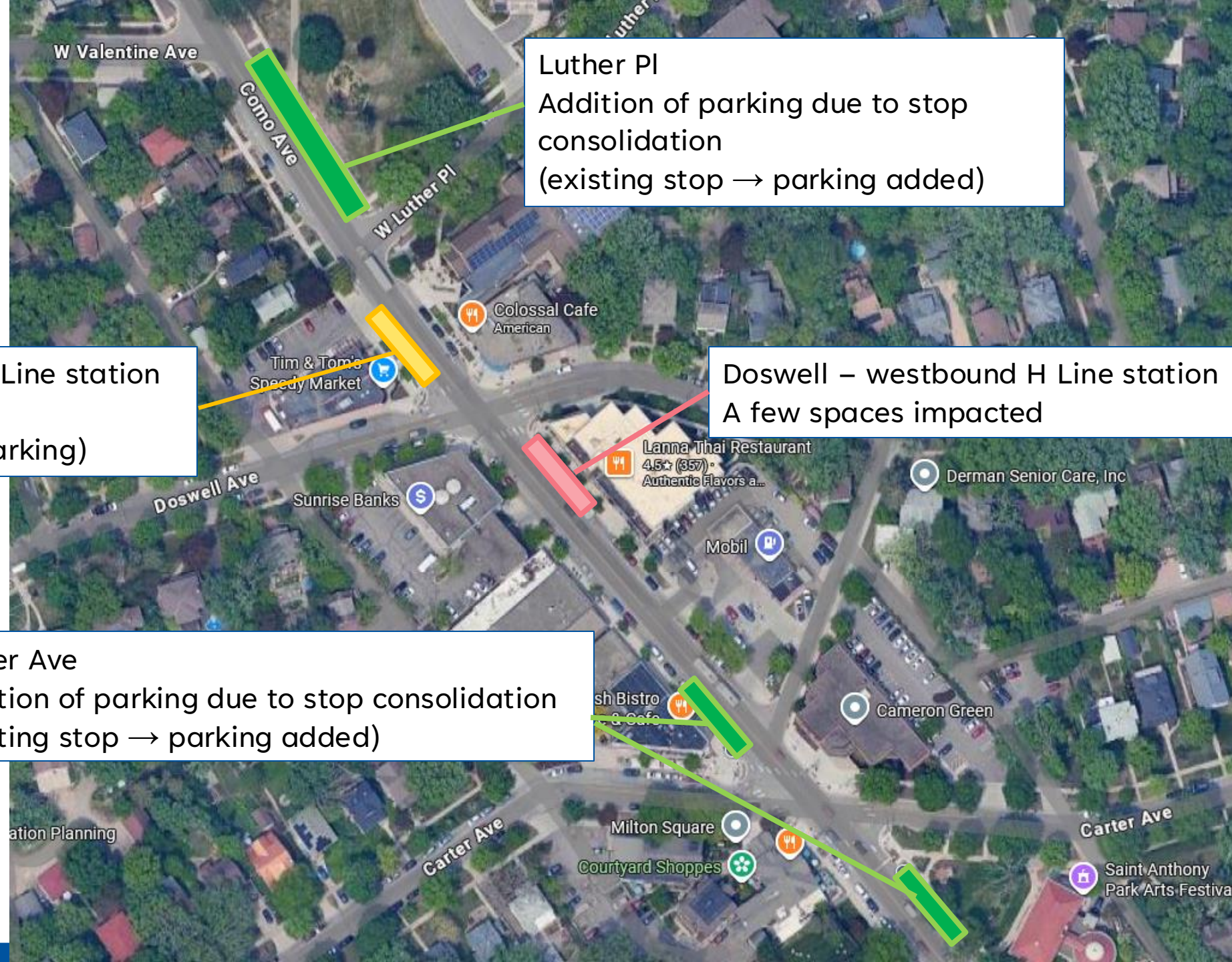
Patio seating



Google Streetview, August 2021



Anticipated parking impacts



Luther Pl
Addition of parking due to stop consolidation
(existing stop → parking added)

Doswell – eastbound H Line station
No change in parking
(existing bus stop, no parking)

Doswell – westbound H Line station
A few spaces impacted

Carter Ave
Addition of parking due to stop consolidation
(existing stop → parking added)