

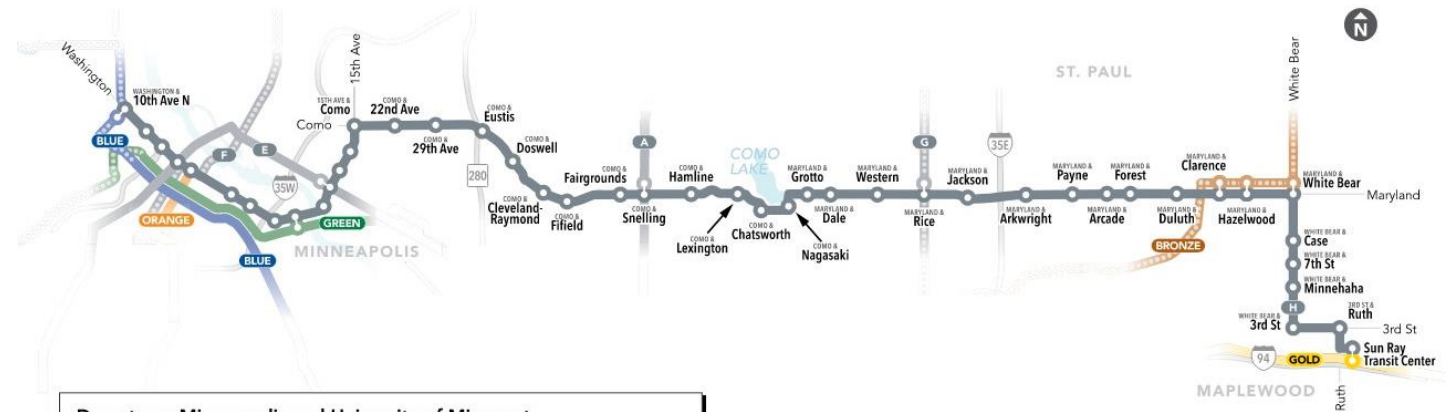


METRO H Line – Draft Corridor Plan

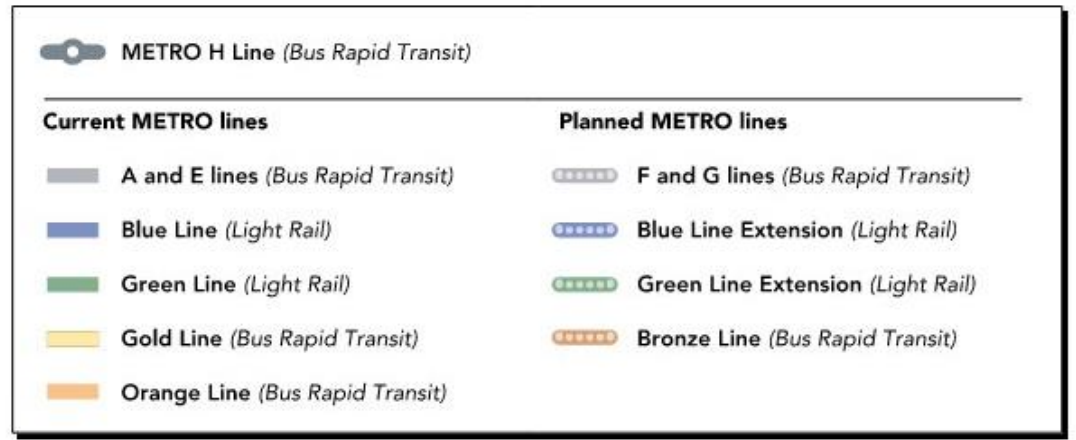
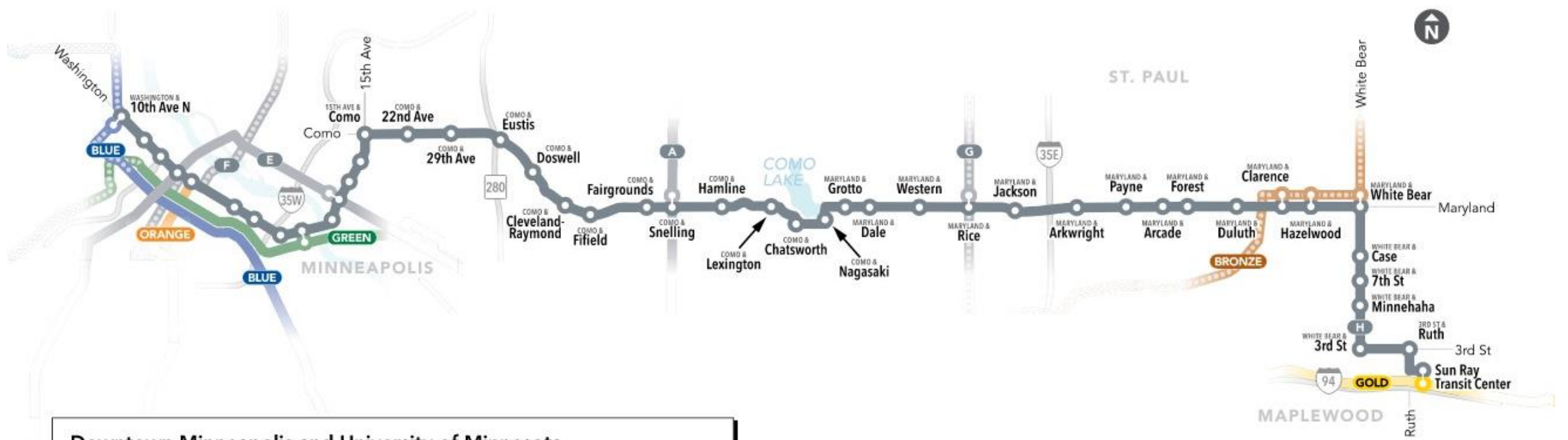
University of Minnesota – Class Presentation

METRO H Line bus rapid transit (BRT)

- Fast, frequent, all-day service
- BRT buses and stations that are comfortable and easy to use
- 17-mile BRT line
 - Sun Ray Transit Center to downtown Minneapolis
 - Primarily on White Bear, Maryland, Como, and Washington avenues
- 45 proposed BRT stations
- Planned to upgrade and replace existing Routes 3 and 80, with modifications to other routes

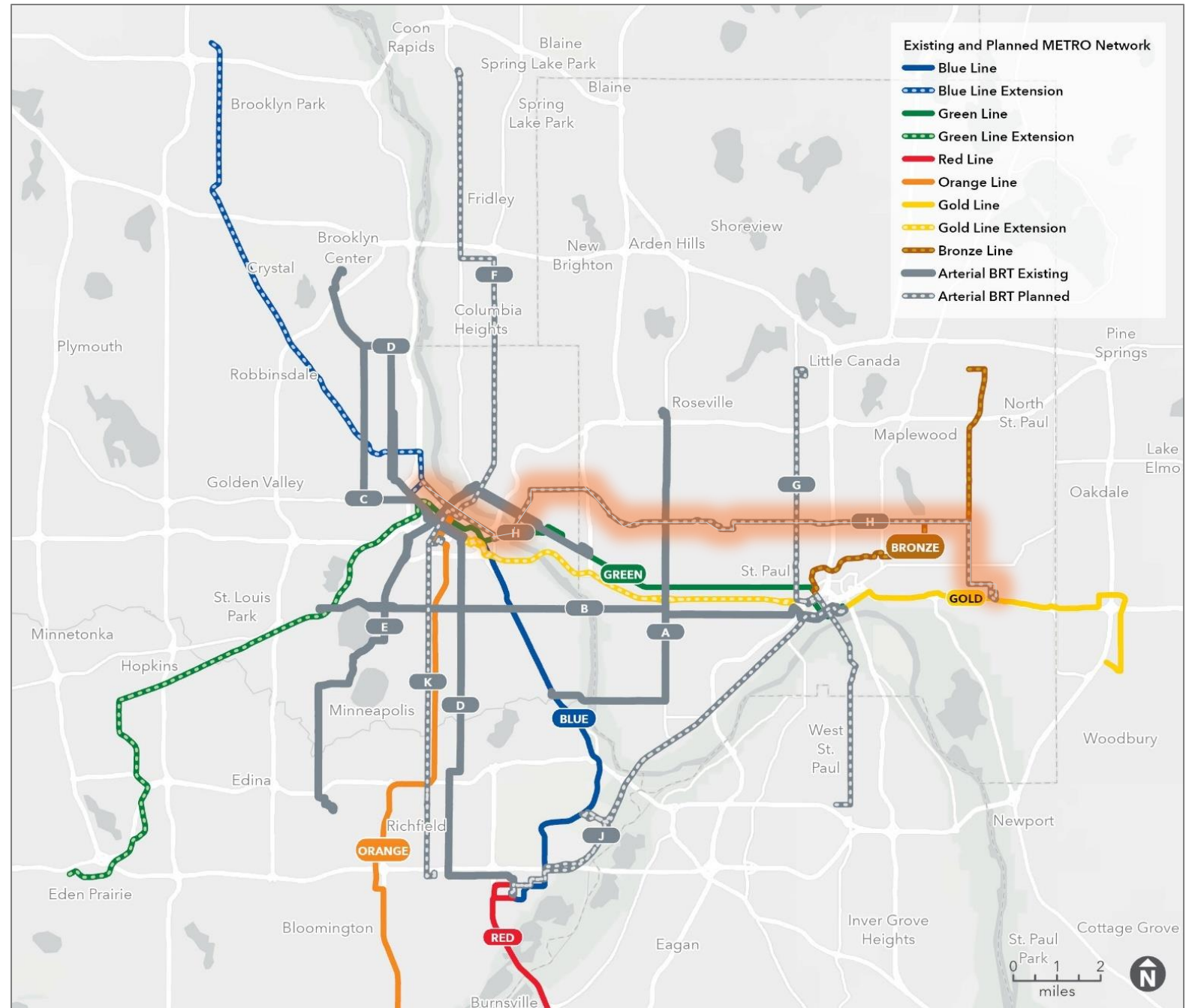


METRO H Line (Bus Rapid Transit)	
Current METRO lines	Planned METRO lines
— A and E lines (Bus Rapid Transit)	— F and G lines (Bus Rapid Transit)
— Blue Line (Light Rail)	— Blue Line Extension (Light Rail)
— Green Line (Light Rail)	— Green Line Extension (Light Rail)
— Gold Line (Bus Rapid Transit)	— Bronze Line (Bus Rapid Transit)
— Orange Line (Bus Rapid Transit)	



Expanding the METRO network

- 8th arterial BRT line in the METRO network
- New crosstown service filling a gap along Maryland Ave from Rice St to Payne Ave
- Connecting with most existing and planned METRO lines



Arterial BRT:

Designed to be faster, more reliable, and easy to use

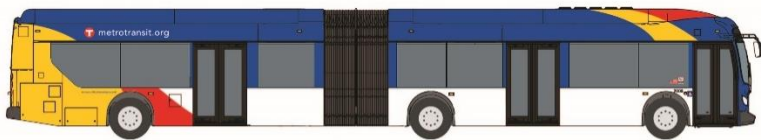


1/8 mile between stops



1/3 to 1/2 mile between stations

2-3 stations per mile for faster trips



High-capacity buses & boarding through all doors



High-tech, high-amenity, secure stations



Pre-boarding fare payment for faster stops



Bus priority signals & lanes



Faster, frequent, all-day service

What will H Line stations look like?



A **Pylon markers** help riders identify stations from a distance.

B **Real-time NexTrip signs** provide bus information, and on-demand **annunciators** speak this information for people with low vision.

C **Shelters** provide weather protection and feature push-button, on-demand **heaters** and shelter **lighting**. Shelter sizes will vary based on customer demand (small shown here).

D **Ticket machines** and **fare card readers** collect all payment before customers board the bus.

E **Emergency telephones** provide a direct connection to Metro Transit police. Stations also feature **security cameras**.

F Stations feature **trash and recycling** containers.

G Platform edges are marked with a cast-iron **textured warning strip** to keep passengers safely away from the curb while the bus approaches. Many stations also feature **raised curbs** for easier boarding.

H **Platform areas** are distinguished by a dark gray concrete pattern.

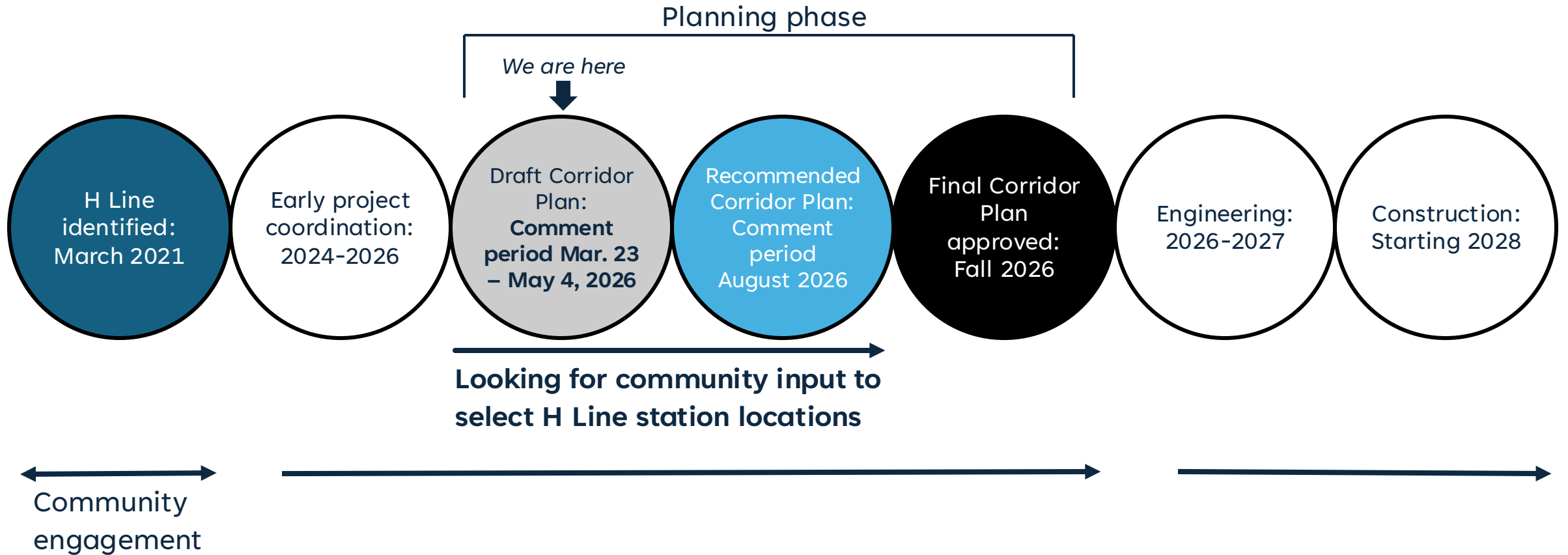
I **Benches** at stations provide a place to sit.

J Most stations have **bike parking**.

At some stations, **railings** separate the platform from the sidewalk.

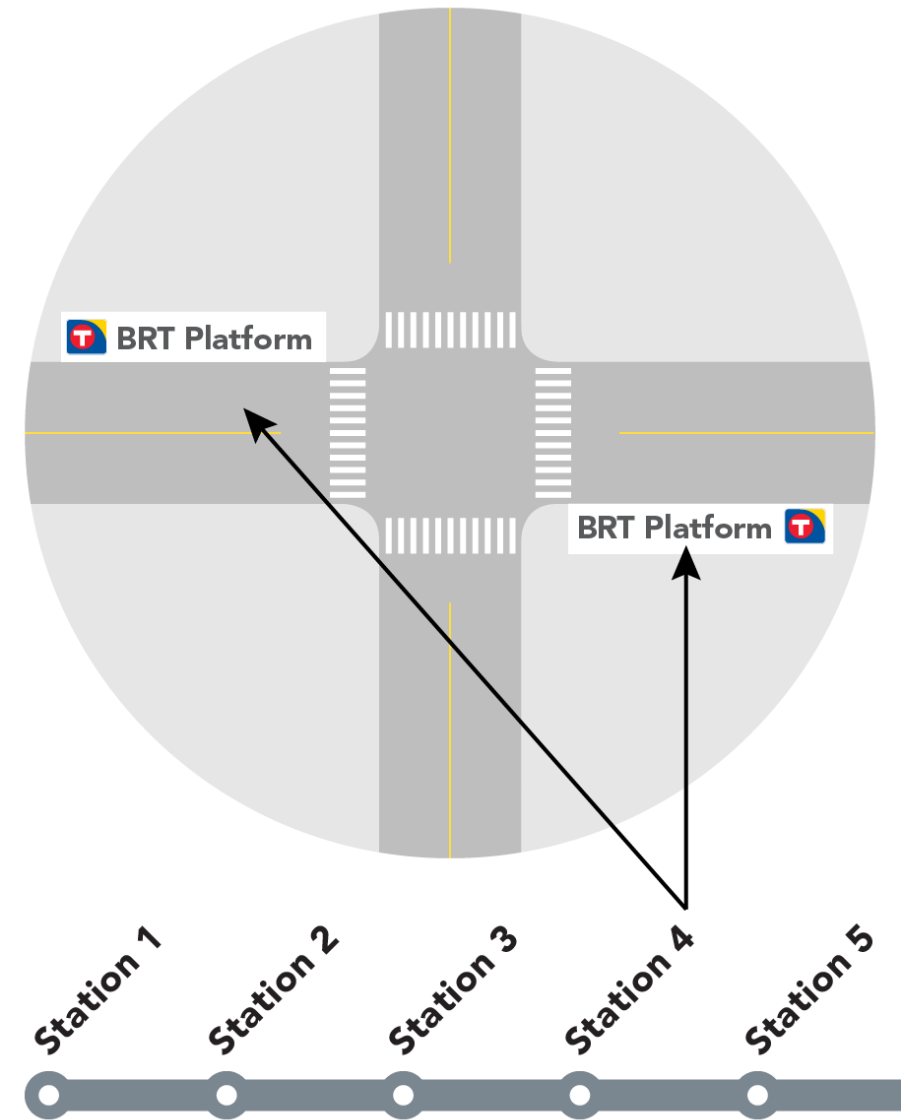
Some stations have pedestrian-scale **light fixtures** to provide a safe, well-lit environment.

H Line project schedule



What is included in the Corridor Plan?

- Proposed **station** and **platform** locations
- Information about how and why proposed locations were determined
- Proposed service changes
- Coordinated project information
- Summary of engagement



Metro Transit is working with the University of Minnesota to determine where shelters will be placed at these platforms.

Westbound platform
(on Washington Ave below plaza)

Pedestrian bridge

Plaza

Washington Ave SE

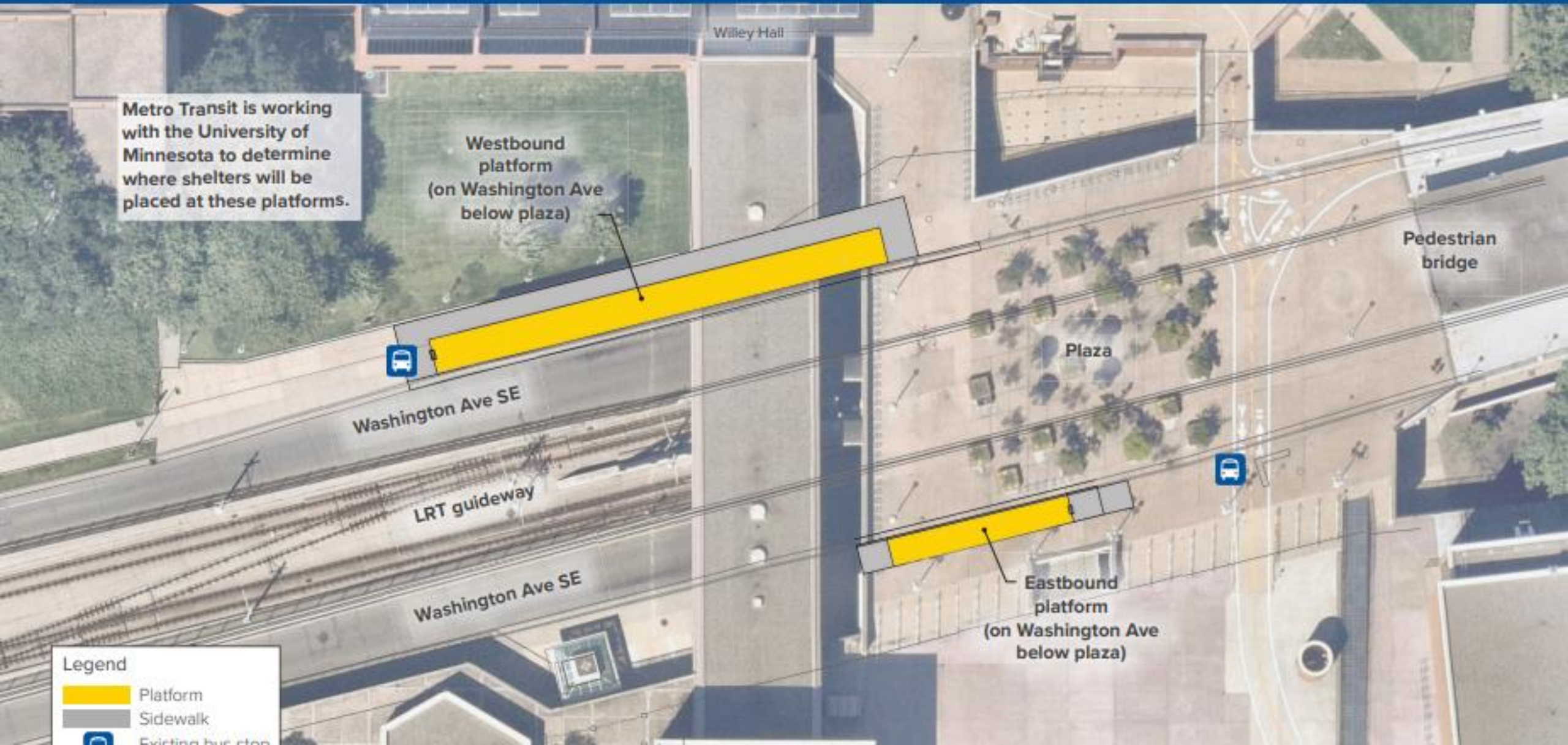
LRT guideway

Washington Ave SE

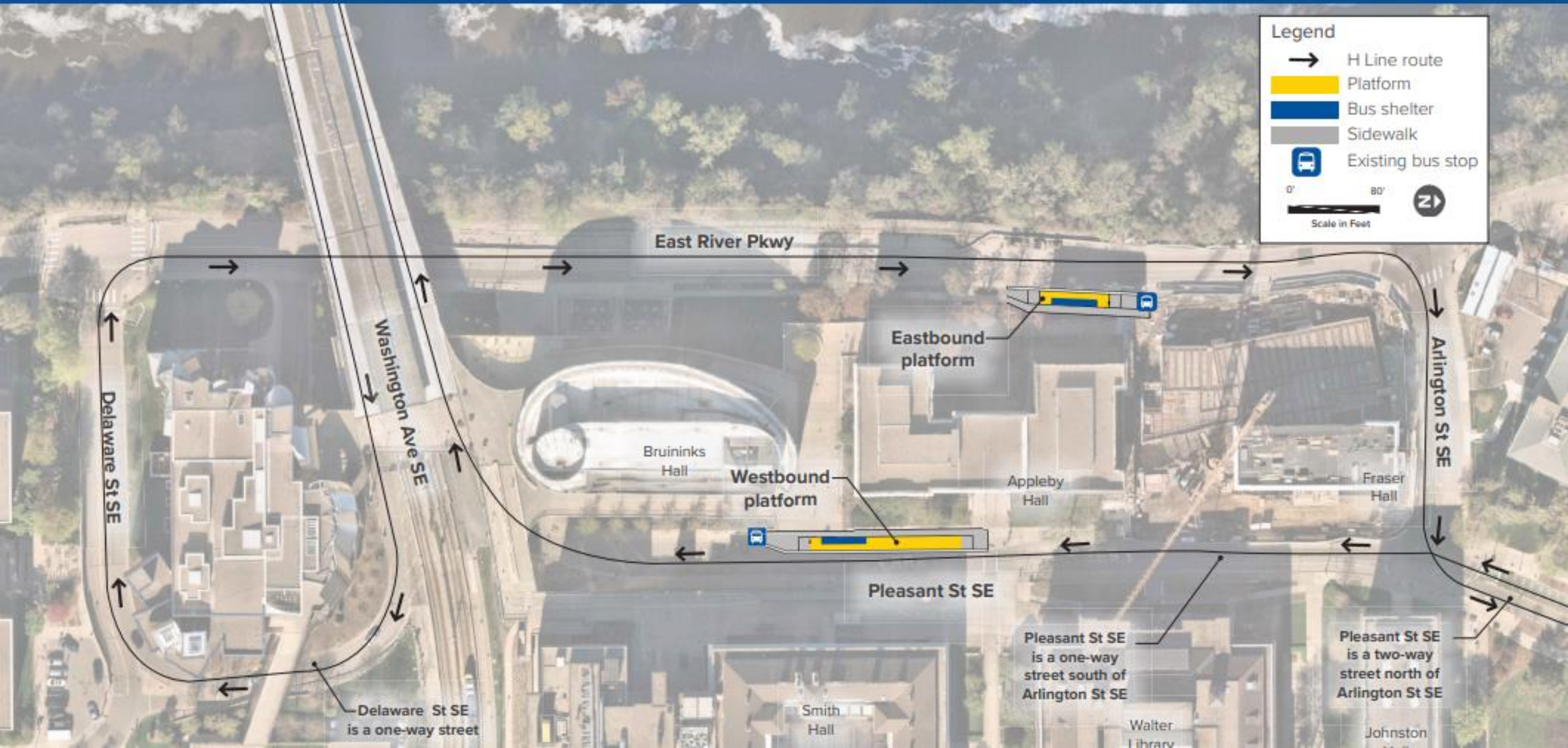
Eastbound platform
(on Washington Ave below plaza)

Legend

- Platform
- Sidewalk
- Existing bus stop



Pleasant-E River & Appleby Hall



Metro Transit is working with the University of Minnesota to refine platform concepts at this station to minimize impacts to campus fabric, circulation, and operations.

Westbound platform

Pleasant St SE

Pleasant St SE

Eastbound platform

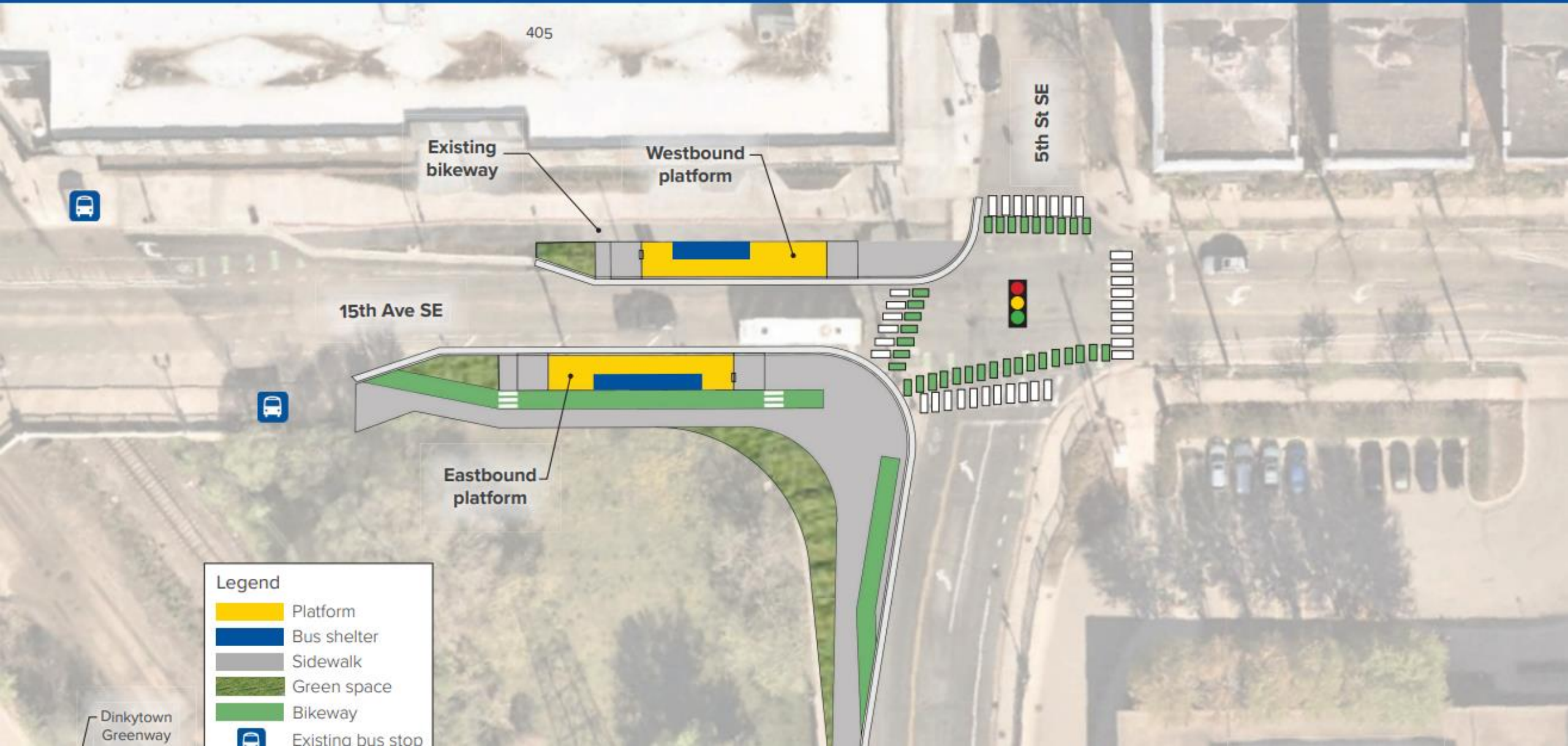
Folwell Hall

University Ave SE

Legend

-  Platform
-  Bus shelter
-  Sidewalk
-  Existing bus stop

Metro Transit is working with the University of Minnesota to determine where the shelter will be placed at the eastbound



405

Existing bikeway

Westbound platform

5th St SE

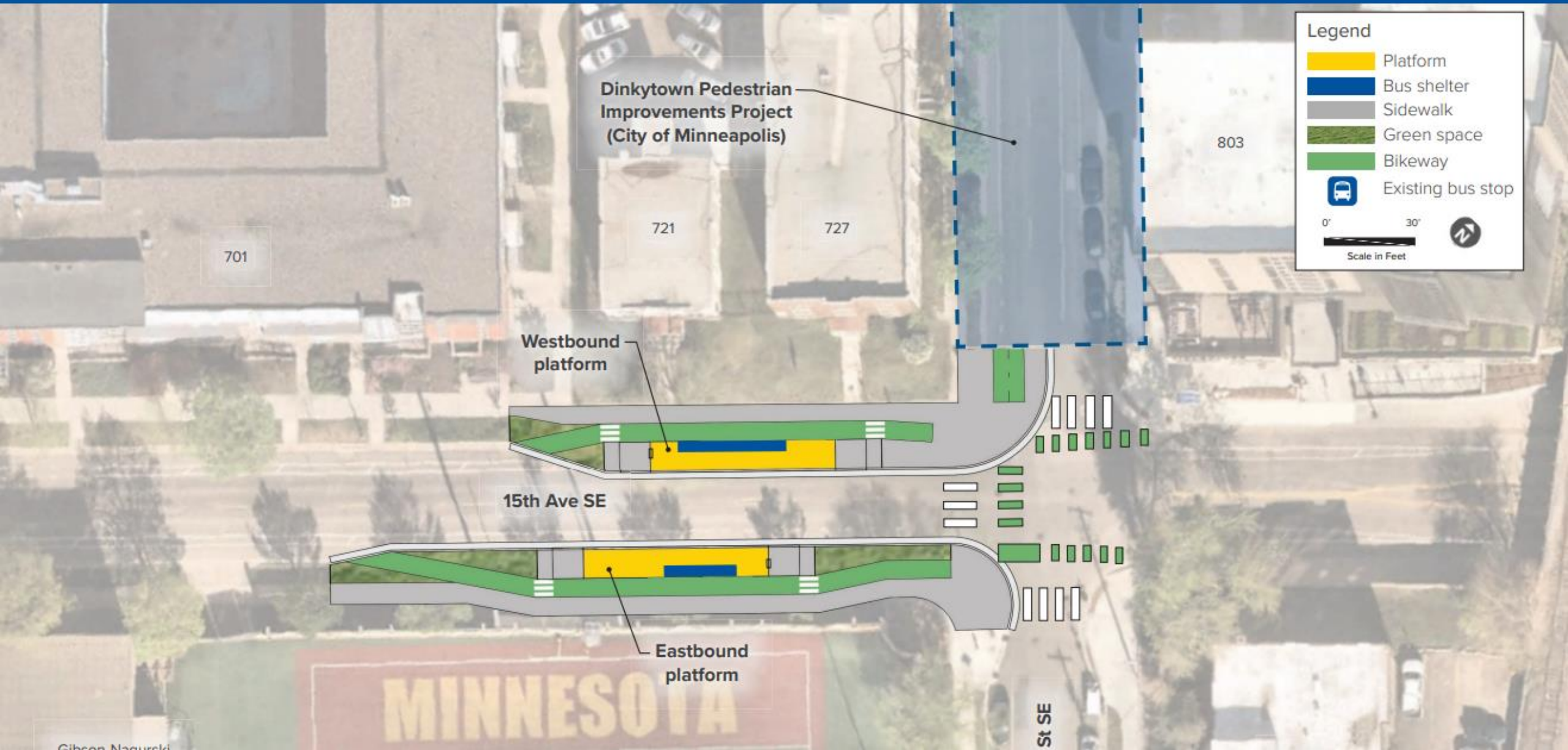
15th Ave SE

Eastbound platform

Legend

- Platform
- Bus shelter
- Sidewalk
- Green space
- Bikeway
- Existing bus stop

Dinkytown Greenway



Dinkytown Pedestrian
Improvements Project
(City of Minneapolis)

701

721

727

803

Westbound
platform

15th Ave SE

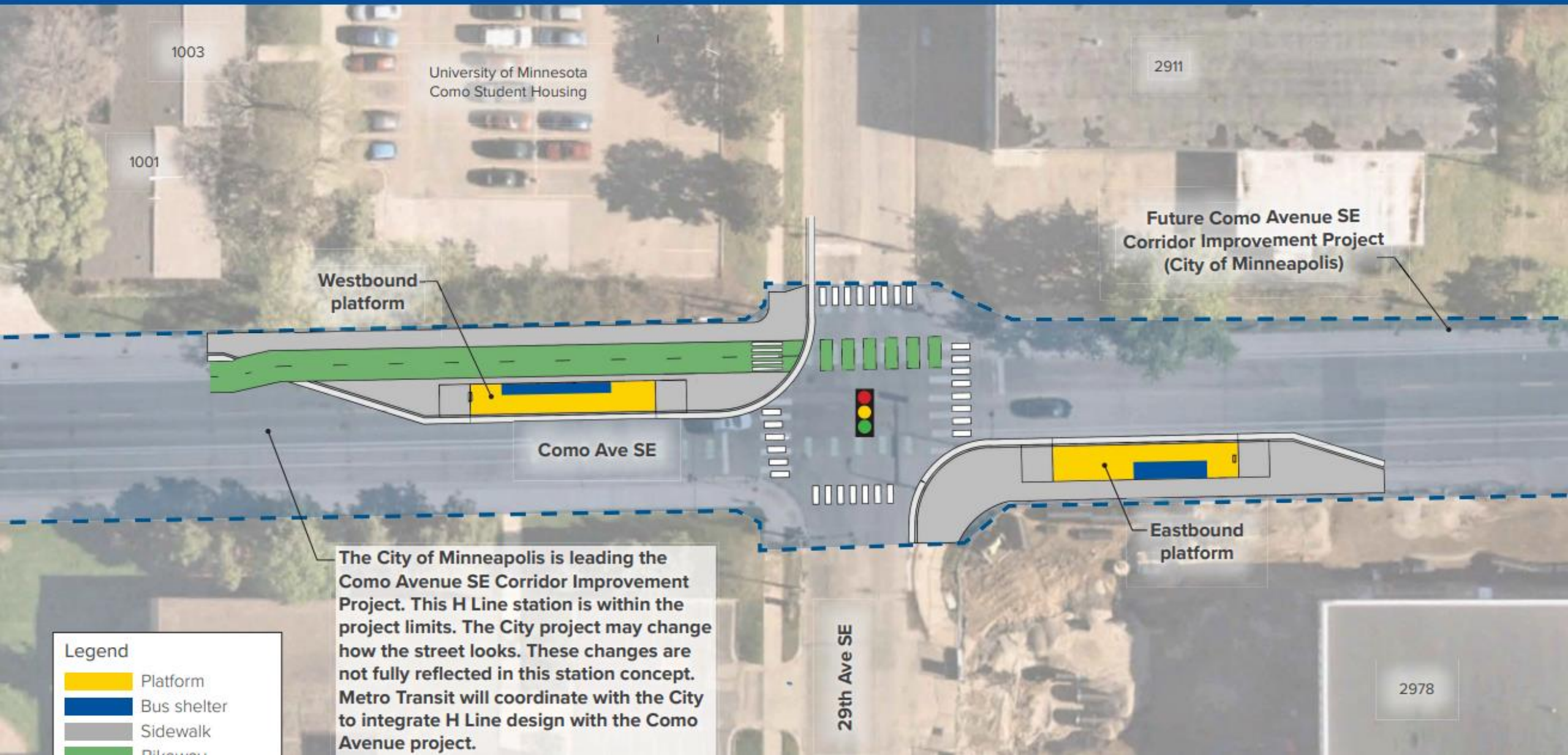
Eastbound
platform

St SE

Legend

- Platform
- Bus shelter
- Sidewalk
- Green space
- Bikeway
- Existing bus stop

0' 30'
Scale in Feet



1003

University of Minnesota
Como Student Housing

2911

Future Como Avenue SE
Corridor Improvement Project
(City of Minneapolis)

1001

Westbound
platform

Como Ave SE

Eastbound
platform

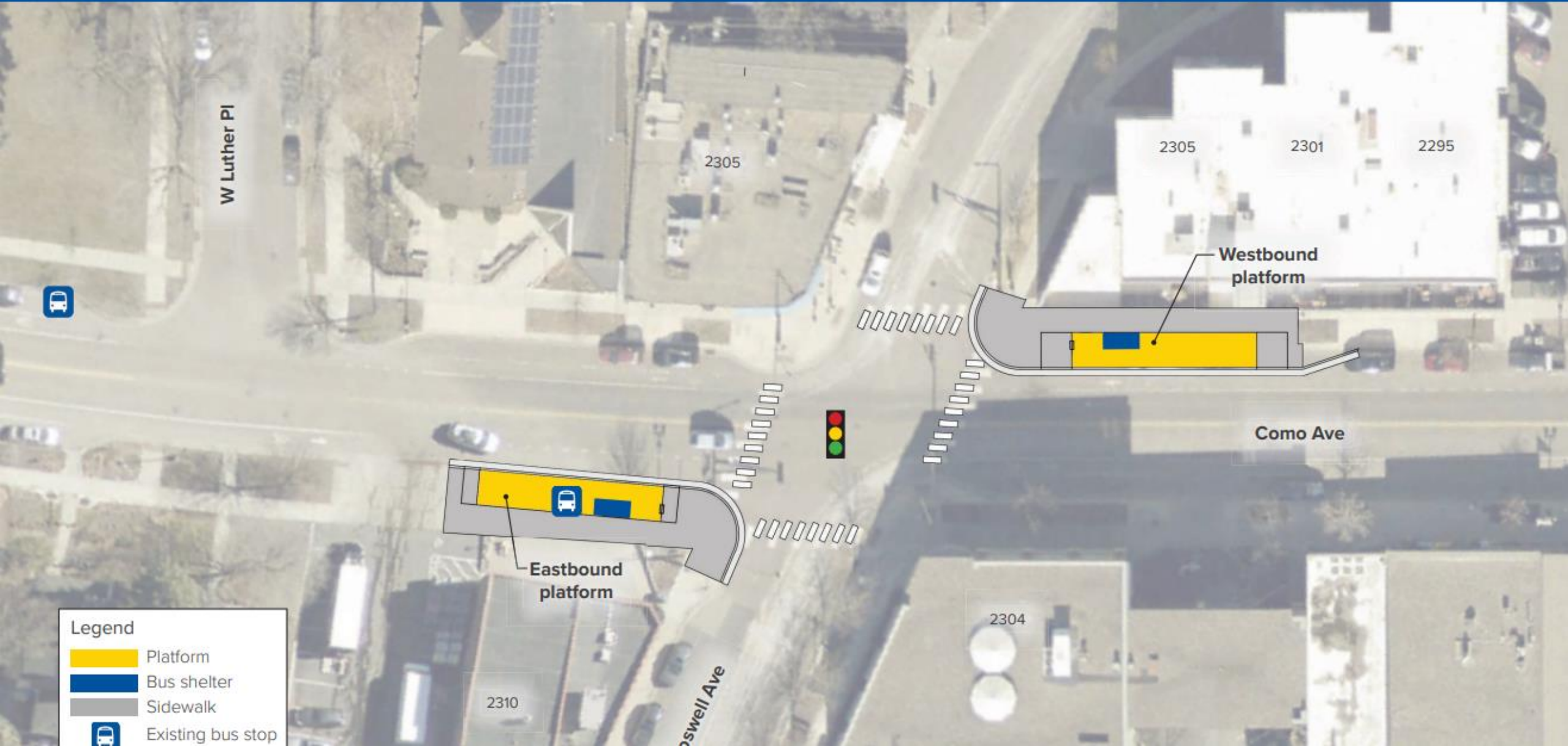
The City of Minneapolis is leading the Como Avenue SE Corridor Improvement Project. This H Line station is within the project limits. The City project may change how the street looks. These changes are not fully reflected in this station concept. Metro Transit will coordinate with the City to integrate H Line design with the Como Avenue project.

Legend

-  Platform
-  Bus shelter
-  Sidewalk
-  Bikeway

29th Ave SE

2978



W Luther Pl

2305

2305

2301

2295

Westbound platform

Como Ave



Eastbound platform

2304

2310

Doswell Ave

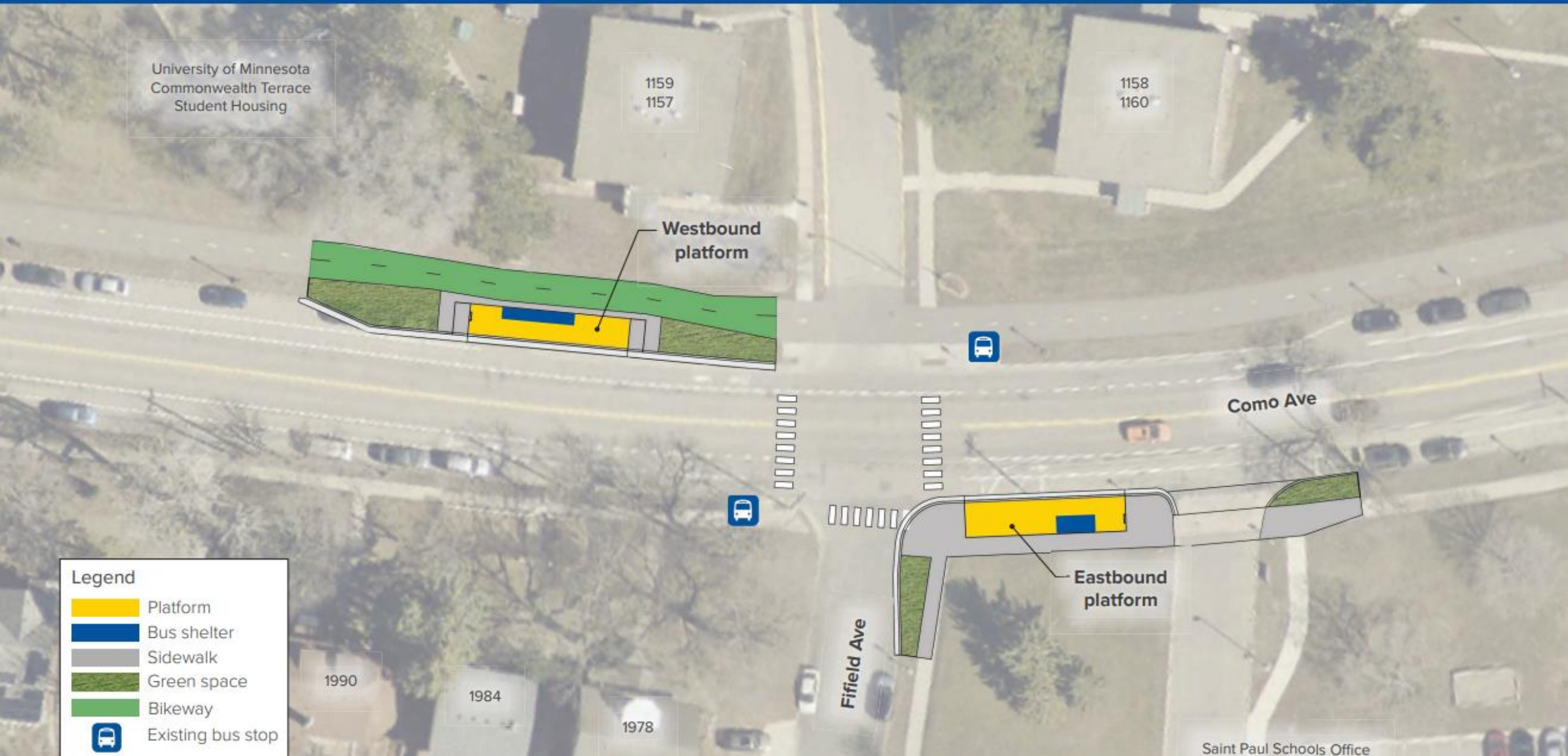
Legend

-  Platform
-  Bus shelter
-  Sidewalk
-  Existing bus stop

Como & Cleveland-Raymond



- Legend**
- Platform
 - Bus shelter
 - Sidewalk
 - Green space
 - Bikeway
 - Existing bus stop



University of Minnesota
Commonwealth Terrace
Student Housing

1159
1157

1158
1160

Westbound
platform

Como Ave

Fifield Ave

Eastbound
platform

1990

1984

1978

Saint Paul Schools Office

Legend

- Platform
- Bus shelter
- Sidewalk
- Green space
- Bikeway
- Existing bus stop

Draft Corridor Plan public comment period

- 6-week public comment period:
March 23 – May 4
- Strategies: Postcards, flyers, intercepts at bus stops, door knocking, community events & meetings, pop-ups tabling, etc.
- **Survey** used as primary tool for collecting input – online and paper versions
- All materials are translated



Help us plan H Line station locations

- metrotransit.org/h-line-project
- Review the **Draft Corridor Plan** and share your feedback
 - Complete our survey
 - HLine@metrotransit.org
- Comment by **May 4**
- Sign up for the H Line Update newsletter

