



Community & Business Advisory Committee

Meeting #15 | Friday, December 5, 2025

Welcome & Introductions

Liz Jones | Community Outreach & Engagement Lead



Housekeeping

- Virtual meeting etiquette
 - Camera on
 - Microphone (muted when not speaking)
 - Raise hand (if you have a question)
 - Chat (feel free to ask questions in the chat)
- Meeting is being recorded
- Meeting agendas, summaries, and presentation materials are posted on the project website at metrotransit.org/bronze-line-project-public-engagement

Today's Topics

- Color Rebranding
- Project Overview
- Funding and Responsibilities
- Communications and Outreach
- Next Steps

Project Rebranding

Stephen Smith | Deputy Project Manager

Liz Jones | Community Outreach & Engagement Lead



Project History



Color Rebranding

- 12/2 public announcement of new Bronze Line color
- Remarks by Commissioner Xiong, Chair Hutcheson, Mayor Carter, Mayor Abrams



Color Specifications

- CMYK: 0, 62, 100, 32
- Pantone: 160
- HEX: # b15c12
- 3M Vinyl: Terra Cotta



Project Overview

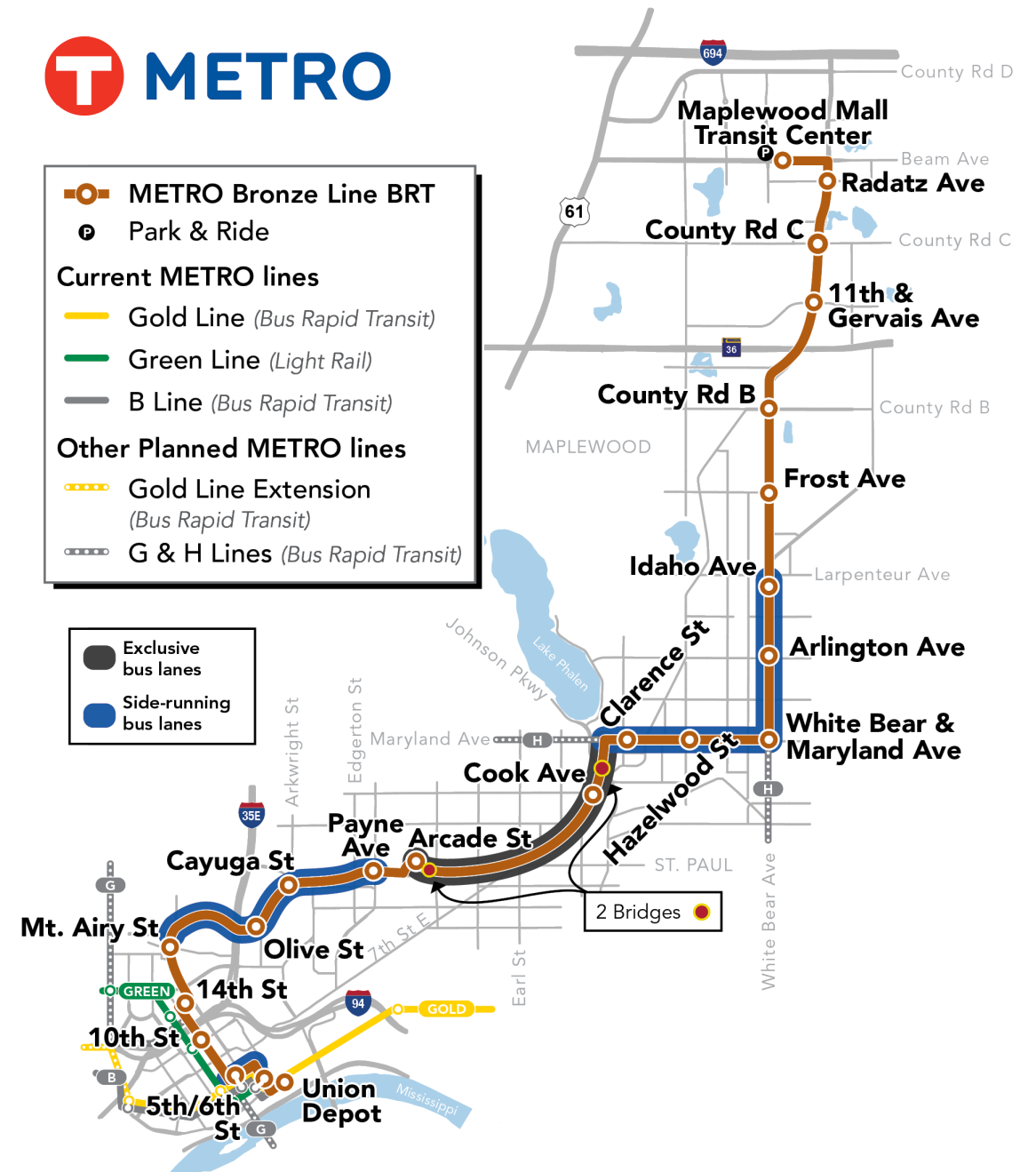
Stephen Smith | Deputy Project Manager

Craig Lamothe | Project Manager



METRO Bronze Line!

- A reimagined and community-responsive version of the former Purple Line BRT project
- Will improve transit reliability and enhance safety along key corridors
- 10-mile route between St. Paul's Union Depot and the Maplewood Mall Transit Center
- 22 stations and feature 5 miles of bus lanes and two new bridges



METRO Light Rail Transit

- Blue Line
- Blue Line Extension
Project in engineering
- Green Line
- Green Line Extension
Project under construction; opens 2027

Current Station

Proposed Station

←

Station names indicated with an arrow show the direction of travel at the station.

METRO Bus Rapid Transit

- Bronze Line
Project in engineering
- Gold Line
- Gold Line Extension
Project in engineering; opens 2027
- Orange Line
- Red Line

A

A Line

B

B Line

C

C Line

D

D Line

E

E Line
Opens 2025

F

F Line
Project in engineeri

G

G Line
Project in engineering

H

H Line
Project in planning; stations subject to change

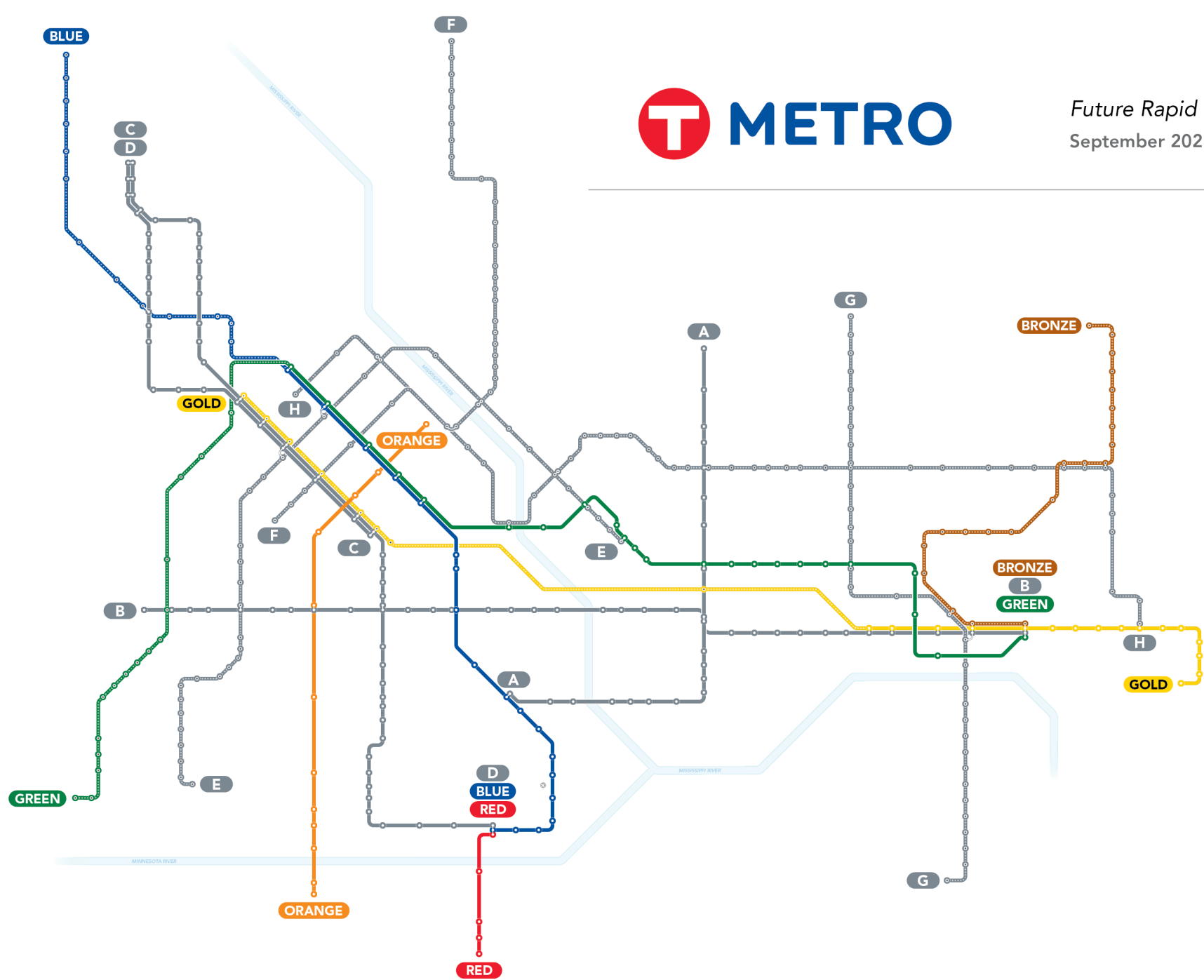
Bus Rapid Transit (BRT) lines offer speed improvements of up to 25% over regular transit routes.

BRT lines named with a color operate primarily on bus-only lanes and freeways with transit advantages.

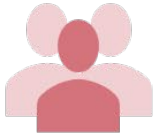
BRT lines named with a letter operate in mixed traffic with signal priority and other transit advantages like bus-only lanes.

Future Rapid Transit Network

September 2025



Who is the Project serving



- 61% BIPOC



- 17% 0-car Households



- 20% Population in poverty



- 11% Population over 65



- 38% Population under 25



- 13% Population with a Disability



- 18% Population with Limited English Proficiency



12

Schools



5

Healthcare
Facilities



2

Libraries

Features of BRT

- **Enhance Stations:** Amenities include heat, lighting, bike racks, frequent cleaning and snow removal
- **Off-board Fare Collection:** Riders pay their fare payment at the station, instead of on the bus
- **Raised Platform Boarding:** Riders of all abilities can board easier with 10” high platform
- **Intersection Treatments:** BRT vehicles receive priority at intersections
- **Station Intersection Improvements:** Updates to pedestrian ramps and signals
- **Dedicated Guideway/Lanes:** Buses can travel faster and reliable with bus-only lanes

Features of a BRT Station



BRT in Saint Paul south of Maryland Ave

- Union Depot Station to Cook Ave. Station: Preliminary Engineering Complete
 - Major design features such as platforms and bridges are set.
- Union Depot Station through 10th St. Station have been or will be completed by other BRT projects



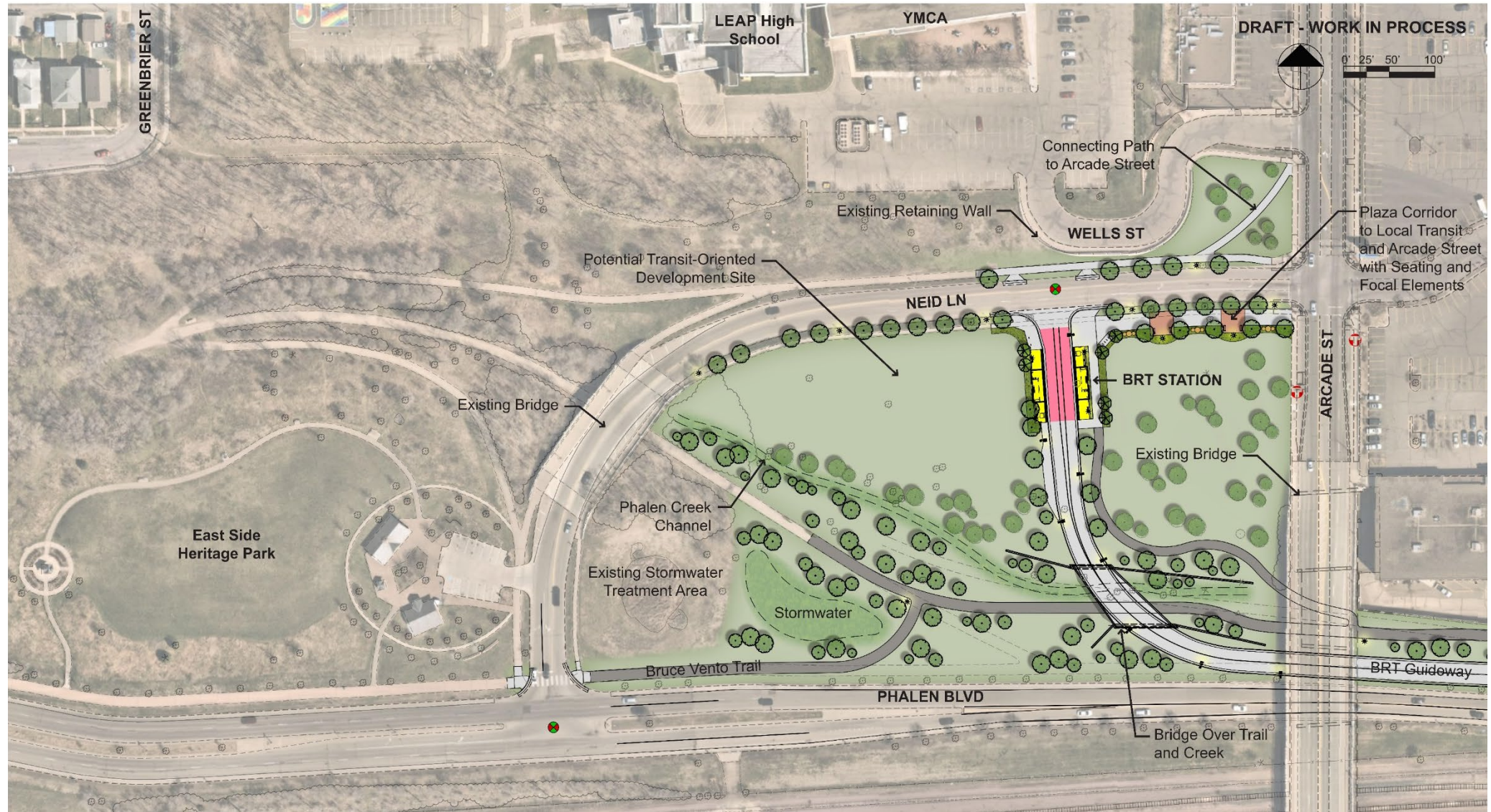
Pennsylvania Avenue

Project Area



- Currently under study by Ramsey County between I-35E and Rice Street.
- Part of the BRT alignment and will become part of the project to ensure design consistency and corridor operations.
- Includes multimodal improvements and dedicated transit lanes.
- Construction timing will align with corridor BRT delivery schedule.

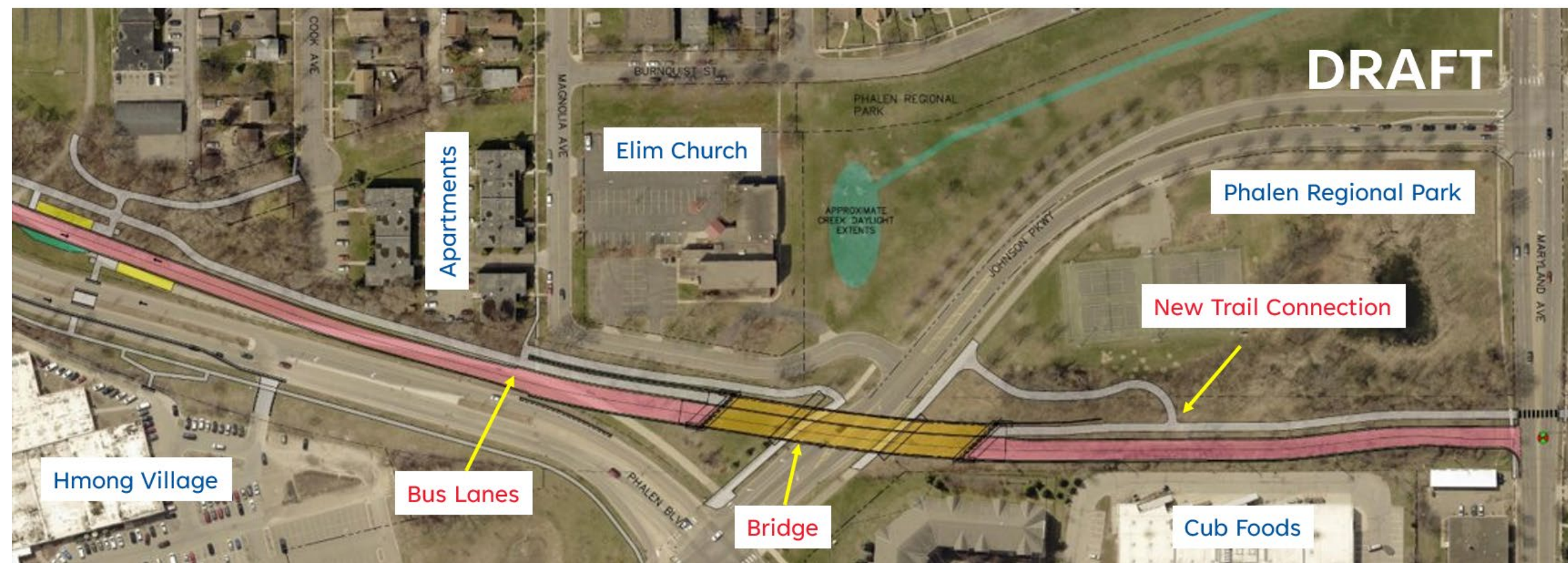
Arcade Station Location



Artist Rendering of the Arcade St Station Area



Bronze Line & Trail Bridge over Johnson Parkway



Johnson Parkway Bridge (Artist Rendering 2019)



Saint Paul on Maryland and White Bear avenues

- 5 BRT stations on Maryland and White Bear avenues
 - Clarence, Hazelwood, White Bear & Maryland, Arlington, Idaho
- Side-running bus lanes
 - General traffic to make right-turns onto local streets or into driveways
- Full roadway reconstruction



Bronze Line in Saint Paul (Maryland and White Bear)

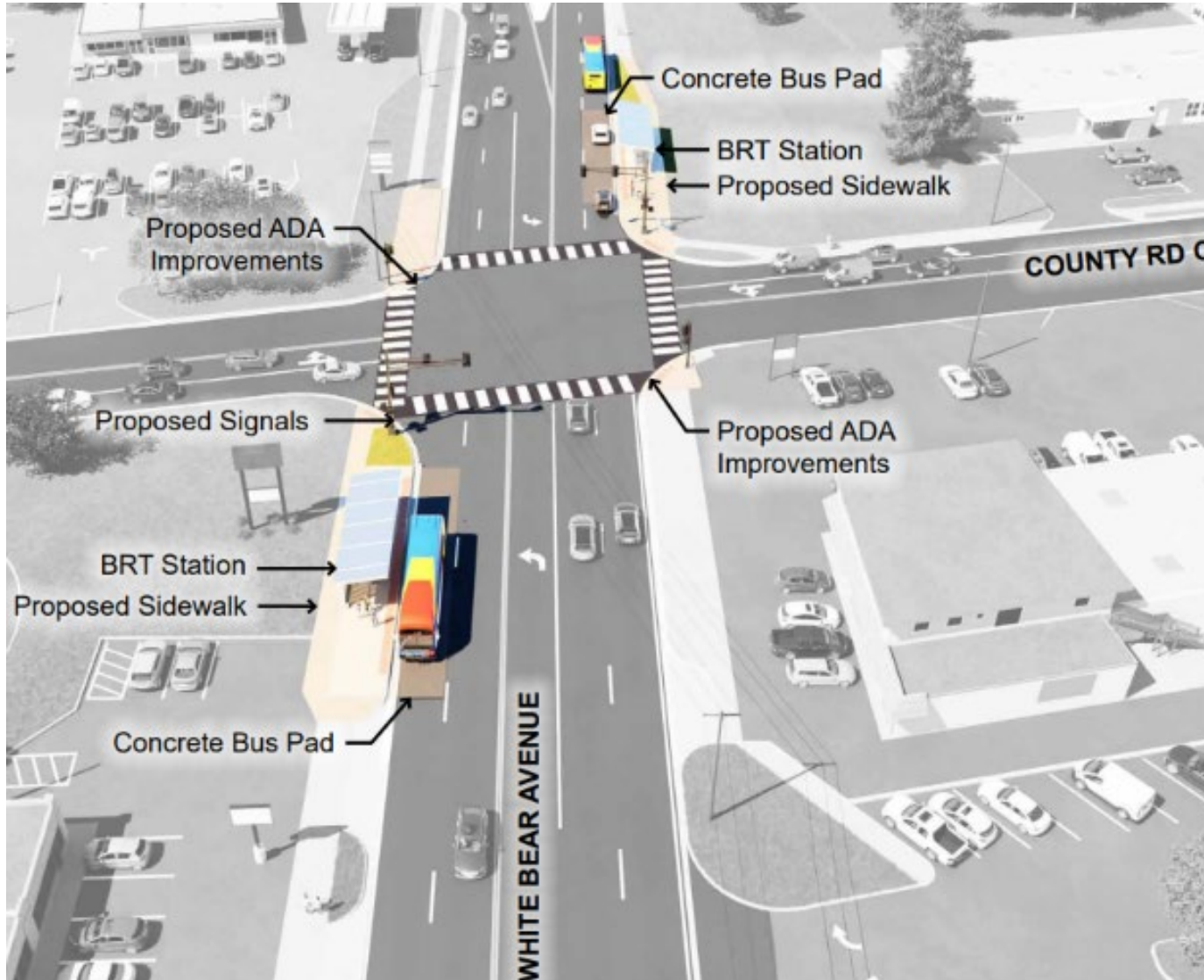


Maplewood – White Bear Ave north of Larpenteur Ave:

- 6 BRT stations
 - 5 new stations (Frost, County Rd B, 11th/Gervais, County Rd C, Radatz)
 - End-of-the-line station at the Maplewood Mall Transit Center



Bronze Line in Maplewood



- Limited right-of-way acquisition to accommodate station platforms
- No roadway reconstruction

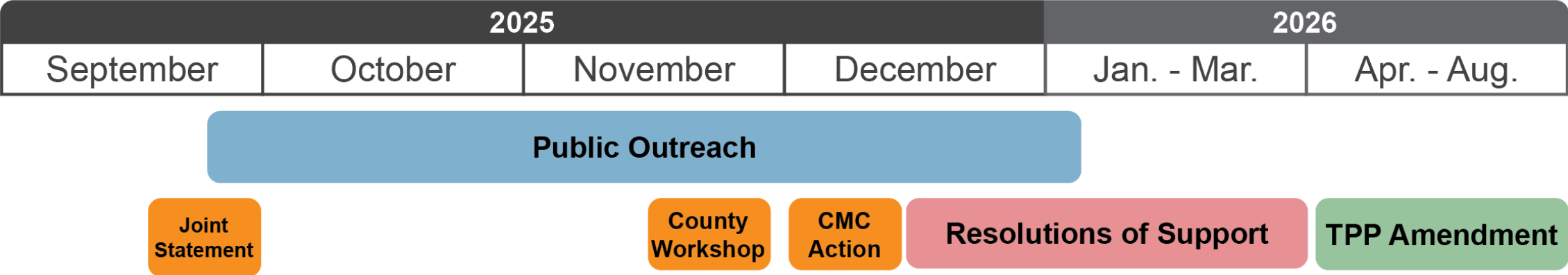
North Terminus

- New end of line station
- Maplewood Mall Transit Center improvements
- Connection to a new [Metro micro](#) service zone (coming September 2026)
- Connection to new and improved Route 219 and 223 service (by end of 2027 through [Network Now](#)).



Near Term Look Ahead

- December 11, 2025
 - Corridor Management Committee recommendation for a revised Locally Preferred Alternative (LPA)
- January – August 2026
 - Council Action: Execute a Funding Agreement with County
 - Council Action: Execute a Contract for Environmental, Engineering & Project Management
 - Council Action: Amend revised LPA into the Transportation Policy Plan



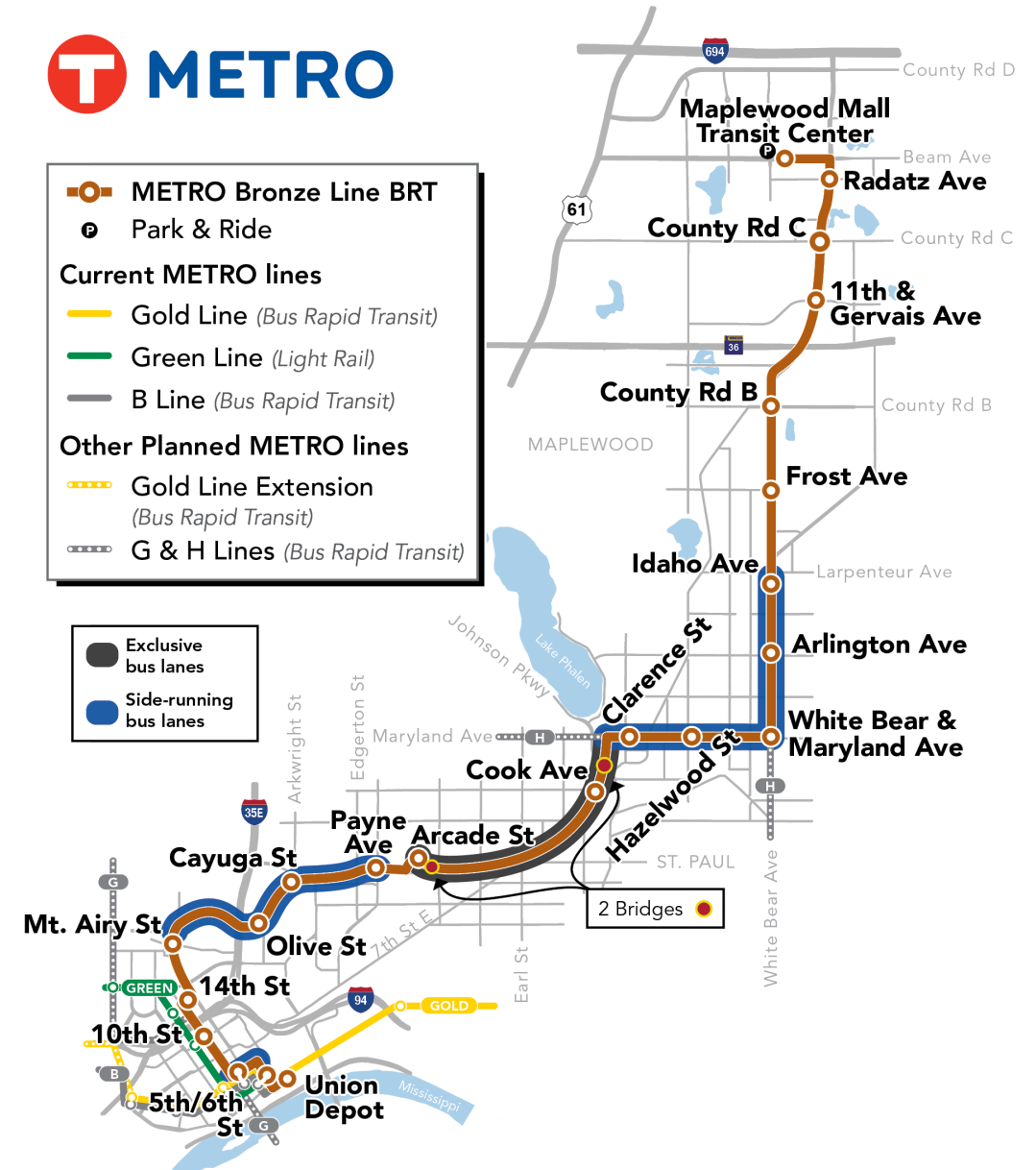
CMC Actions

In support of implementing the stations, bus lanes, and bridges in the planned locations in Saint Paul and Maplewood, the CMC:

ACTION: Recommends METRO Bronze Line as the revised Locally Preferred Alternative (LPA) for the Project formerly known as Purple Line.

ACTION: Recommends the Cities of Saint Paul and Maplewood, and Ramsey County adopt Resolutions of Support for the recommended revised LPA.

ACTION: Recommends the Metropolitan Council amend the recommended revised LPA into the region's long-range transportation plan.



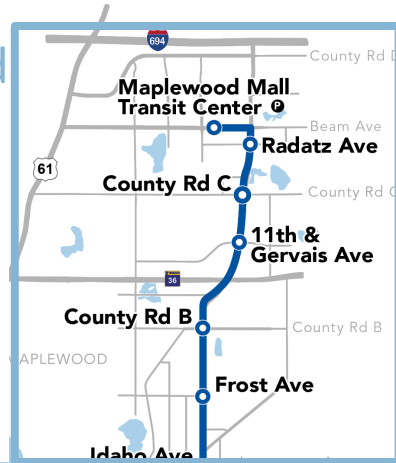
Funding and Project Delivery

Craig Lamothe | Project Manager



Capital Financing Responsibility Split

Met Council Funded



Ramsey County Funded

- **Ramsey County (\$340 million):**
 - All project costs in Saint Paul
 - Labor and expense costs for Ramsey County staff
 - Some labor and expense costs for select Met Council staff
 - Cost to complete state environmental review process
 - Bus propulsion type could reduce funding commitment
- **Met Council (\$35 million):**
 - All project costs in Maplewood
 - Labor and expense costs for most Met Council staff
 - Bus propulsion type could increase funding commitment

Contracting Approach

- “Separate but Coordinated” Engineering & Design Phase
 - Council and County to each procure consultant services contracts.
 - County design contract focuses on reconstruction of county roads (Pennsylvania, Maryland, White Bear) plus mill and overlay on Phalen
 - Council design contract focuses on all stations, intersection improvements in Maplewood, Maplewood Mall Transit Center and Union Depot improvements, two new bridges, and exclusive bus lanes.
 - County procures and manages Strategic Communications, Public Outreach & Engagement, and Community Relations contract with Metro Transit overseeing daily work direction
- Single Construction Package
 - Council or County to issue a single construction package encompassing both design packages

Communication, Coordination, & Collaboration

- Project committees, as currently constituted, are ending in December 2025.



- Overall project committee structure, including committee charter and membership, is under evaluation.
 - Focus on distinguishing between effective communication/information sharing vs. meaningful engagement on issues needing input

Public Outreach

Liz Jones | Community Outreach & Engagement Lead



Outreach Plan

- Timeframe:
 - Stakeholder/Committee outreach began Sept. 23
 - Broad community outreach began Dec 2.
- Purpose:
 - Message rebrand of project
 - Notify community about upcoming CMC to provide an update on project alignment and scope
 - Meet with public and stakeholders to allow time for questions and understanding

Outreach Activities & Materials

- Activities:

- Host virtual community meeting
- Attend community events and conduct pop-ups
- Develop & distribute project materials to display or use at libraries, community centers, etc.
- Presentations to stakeholders
- Meetings with businesses

- Materials:

- Project factsheet
- Newsletter
- Social media
- Display board
- Interactive feedback map (virtual)
- Corridor-wide postcards

Display Board Locations

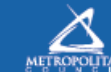
- Maplewood

- Maplewood YMCA
- Ramsey County Library
- Maplewood City Hall
- Cochran Recovery Services
- Emma's Place

- Saint Paul

- Mt. Airy Community Center
- Phalen Recreation Center
- Hayden Heights Recreation Center
- Arlington Hills Community Center
- CLUES Teen Tech Center
- Ramsey County Library - North St. Paul
- St. Paul Public Library - Hayden Heights
- St. Paul Public Library – Dayton's Bluff
- St. Paul Public Library – George Latimer Central
- Iowa Hi-Rise
- Mt. Airy High Rise

METRO Bronze Line Bus Rapid Transit Overview

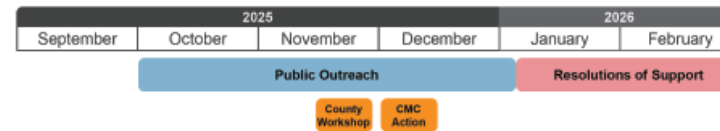


RAMSEY COUNTY

Project Schedule

The Corridor Management Committee (CMC) is anticipated to make a recommendation to advance the project during its Dec. 11 meeting. Afterward, the Metropolitan Council would seek resolutions of support from Ramsey County and the cities of Maplewood and Saint Paul.

The schedule for the project's design, construction, and opening the new project is under development. More information about the longer-term schedule will be shared once available. Construction is not anticipated before 2028.



White Bear Avenue and County Road C in Maplewood



Maryland Avenue and Clarence Street in Saint Paul

In Maplewood, the project includes:

- An improved end-of-the-line station at the Maplewood Mall Transit Center
- Comfortable shelters with a variety of amenities including lighting and landscaping enhancements
- Traffic signal transit priority modifications
- Limited right-of-way acquisition to accommodate station platforms
- Improvements at station intersections, such as:
 - » Pedestrian ramps and signals
 - » Potential replacement of older traffic lights.
- Buses will operate in general purpose lanes north of Larpeteur Avenue

In Saint Paul, the project includes:

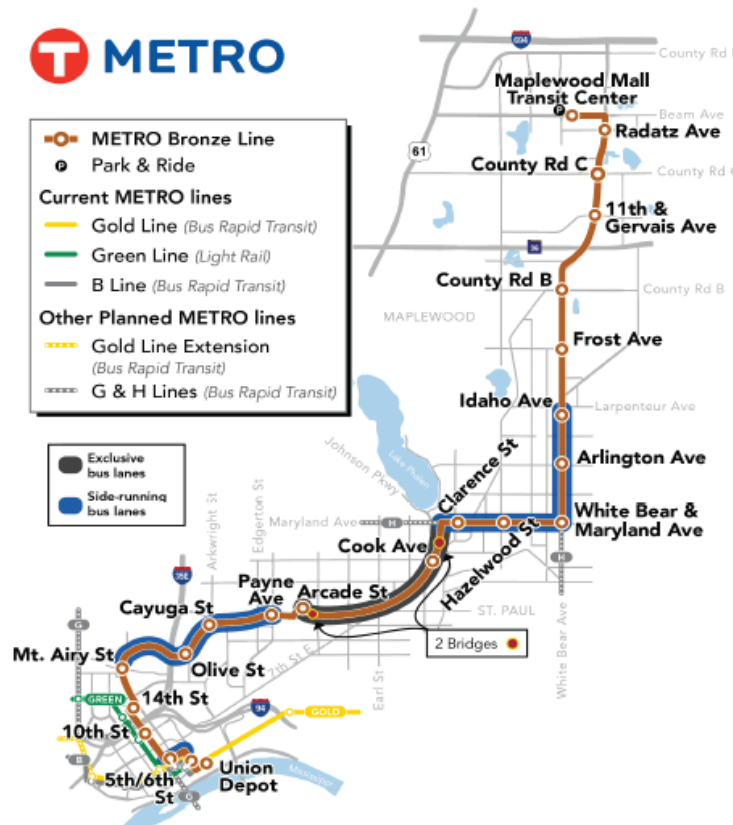
- A new BRT and multi-use trail bridge over Johnson Parkway (between Cook Station and Maryland Avenue)
- Comfortable shelters with a variety of amenities including lighting and landscaping enhancements
- Buses will operate in bus lanes along the route, including side-running bus lanes on Maryland and White Bear avenues south of Larpeteur
- Additional improvements include:
 - » Dedicated left-turn lanes and new medians
 - » Pedestrian ramps and signals
- Traffic signal transit priority modifications
- Right of way acquisition to accommodate roadway reconstruction and station platforms

For more information, visit:
metrotransit.org/bronze-line-project



- METRO Bronze Line
- Park & Ride
- Current METRO lines
 - Gold Line (Bus Rapid Transit)
 - Green Line (Light Rail)
 - B Line (Bus Rapid Transit)
- Other Planned METRO lines
 - Gold Line Extension (Bus Rapid Transit)
 - G & H Lines (Bus Rapid Transit)

- Exclusive bus lanes
- Side-running bus lanes



Stay Connected

Sign up for email updates:
metrotransit.org/bronze-line-project

Call us:
 651-602-1955

Email us:
BronzeLine@metrotransit.org

Follow us:
 @MetroTransitMN



Recent Meetings & Community Events

Date	Type	Event Name
Sept. 23	Committee Meeting	Payne-Phalen (D5) Community Council
Oct. 4	Tabling/Pop-up	Greater East Side (D2) Community Council Neighborhood Block Party and Annual Elections
Oct. 23	Committee Meeting	Purple People
Nov. 17	Committee Meeting	Dayton's Bluff (D4) Community Council
Nov. 19	Committee Meeting	Greater Eastside (D2) Community Council
Dec. 4	Presentation	Friends of the Parks & Trails
Dec. 4	Tabling/Pop-up	Centromex Supermercadeo – Saint Paul
Dec. 5	Committee Meeting	Community and Business Advisory Committee
Dec. 5	Tabling/Pop-up	Maplewood Mall Transit Center
Dec. 5	Tabling/Pop-up	Maplewood Mall
Dec. 8	Tabling/Pop-up	Ramsey County Service Center – Saint Paul
Dec. 10	Virtual Open House	Via Teams to share project information, Q&A
Dec. 10	Committee Meeting	Met Council Committee of the Whole

Upcoming Meetings & Community Events

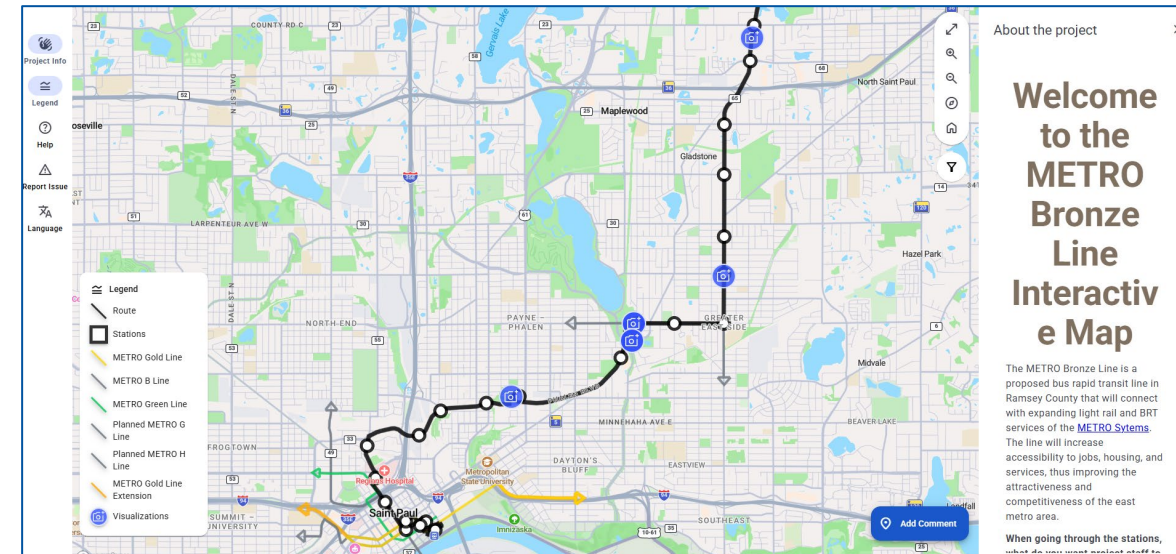
Date	Type	Event name	Time
Dec. 11	Tabling/Pop-up	Sun World Supermarket	3-6p
Dec. 13	Tabling/Pop-up	European Christmas Market	5-7p
Dec. 15	Tabling/Pop-up	Ramsey County Services – Maplewood	10a-1p
Dec. 15	Committee Meeting	Saint Paul Planning Commission's Transportation Committee	4:30p
Dec. 18	Tabling/Pop-up	Hmong Village	12-3p
Jan. 7	Committee Meeting	Transportation Accessibility Advisory Committee	12:30p

Leave a comment and/or question

- Feedback will be shared with project staff and included in the project record
- Comments and questions can be directed to the project team by email: BronzeLine@metrotransit.org
- To leave a comment/question online, visit: surveymonkey.com/r/BronzeLine
- To leave a comment on our interactive map, visit: engage.publiccoordinate.com/project/metro-bronze-line



Survey QR Code



Interactive Map & QR Code

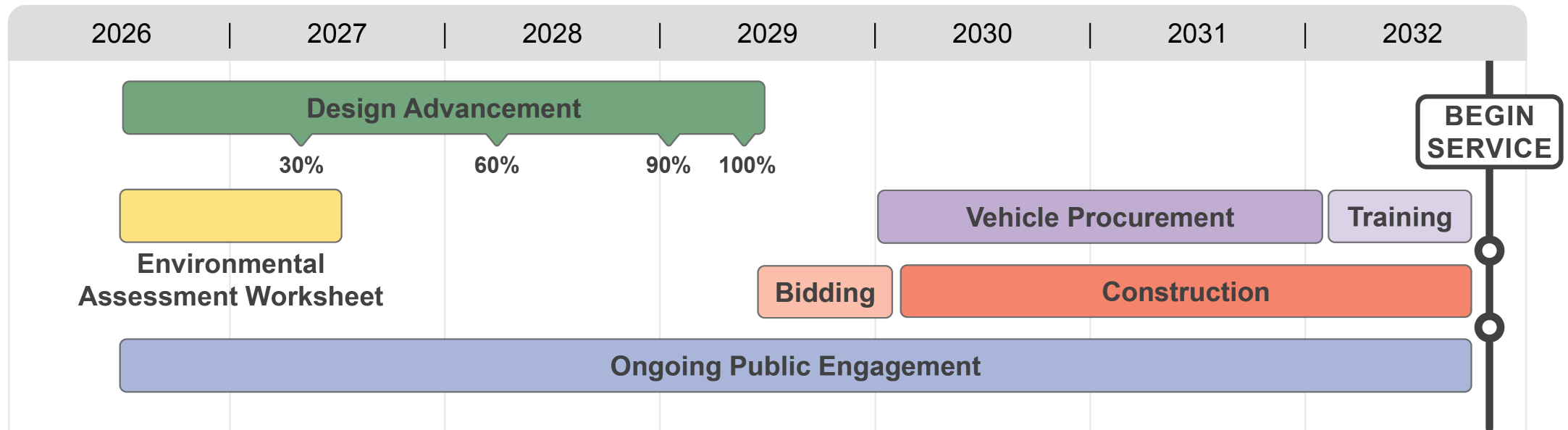
Next Steps

Liz Jones | Community Outreach & Engagement Lead



Longer Term Look Ahead

- New consultant teams onboard by mid-year 2026
- Decision on bus propulsion type in 2028
- Construction staging and maintenance of traffic planning beginning in 2028



Stay connected

Visit *metrotransit.org/Bronze-Line-Project* to sign-up for email updates or connect with project staff.



Sign up for email updates:
metrotransit.org/bronze-line-project



Call us:
651-602-1955



Email us:
BronzeLine@metrotransit.org



Follow us:
[@MetroTransitMN](https://twitter.com/MetroTransitMN)

For project questions or to invite us to an event, contact:

Bronze Line Project Office
BronzeLine@metrotransit.org
651-602-1955

Contact Us:

Project Senior Leadership Team

Craig Lamothe

Council's Project Manager

craig.lamothe@metrotransit.org

Morgan Abbott

Transit Engineering & Design Manager

morgan.abbott@metrotransit.org

Stephen Smith

County's Project Manager

stephen.smith@co.ramsey.mn.us

Eden Haag

Roadway Engineering & Design Manager

eden.haag@co.ramsey.mn.us

Liz Jones

Project's Communications, Outreach & Engagement, and Community Relations Manager

elizabeth.jones@metrotransit.org

Thank You!



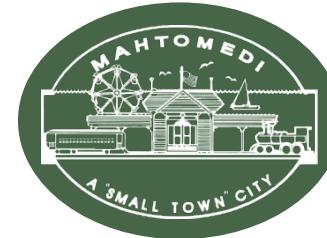
**SAINT PAUL
MINNESOTA**



Maplewood



**WHITE BEAR
TOWNSHIP**



**City of
Gem Lake**