

METRO D Line

What to expect during construction

As part of building the METRO D Line communication system, construction crews will be installing underground conduit and cable along the length of the corridor to connect technology equipment at stations. This construction will have minimal impact on the surface.

This cable connection work is needed to link communications systems already in place both north and south of the area. This work will likely be completed in 20 to 30 days, but construction schedules are subject to change.

View the photos below to learn more about what to expect during this construction.

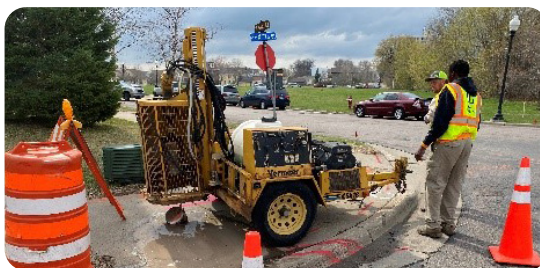
1 SURVEY CREWS

Survey markings are made using a paint that fades within two weeks. The markings made by the survey crew indicate areas such as handhole placement, right of way, existing utilities, and much more.



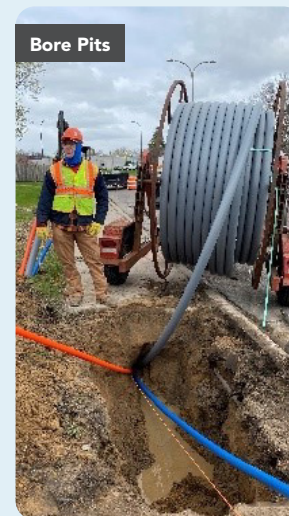
2 POTHOLING

Using a Vermeer CS418 Core Drill machine (seen left), construction crews will saw cut cylinders roughly 4-inches in diameter and roughly 12-inches in length, just enough to get through concrete. Once drilled, these holes will be used to confirm the location and depth of existing utilities.



3 CONDUIT INSTALLATION

Workers will create bore pits using the Vermeer Navigator D24x40 to insert the machine's rods at least 36 inches underground. The only place bore pits will be present is at the start and end of each shot, and may require removal of a 5-foot by 8-foot sidewalk panel. After each bore, the areas will be cleaned and all holes covered. During installation, the construction crew will put up traffic cones while working in order to control traffic and minimize danger to themselves, as well as pedestrians.

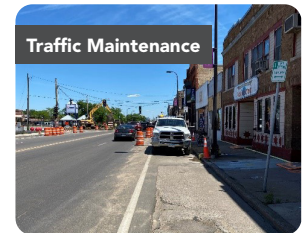
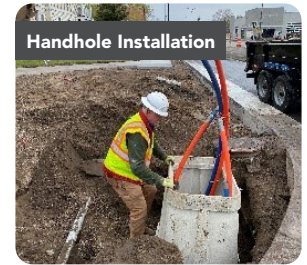


METRO D Line

What to expect during construction

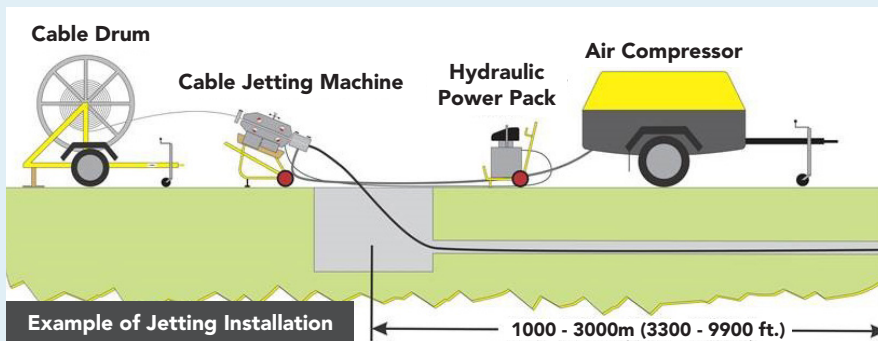
4 HANDHOLE INSTALLATION

Using the John Deere 35G E65 Mini Excavator, workers will dig a hole for the handhole to be placed. The handhole is then put into the ground and the conduits are fed into it. Once the handhole is set, the remaining hole is filled in with either turf or paved over with concrete (depending on location). The top cover of the handhole will be flush with the finished ground. The construction crew will put up traffic cones during the installation to control traffic and minimize danger to themselves, as well as pedestrians.



5 CABLE INSTALLATION

There are two ways that the cable could be installed, either by jetting or pulling. Jetting uses a machine to blow air and force the cable through the conduit to the desired location. Alternatively, the pull method uses a rope within the conduit to pull the cable through the conduit.



Depending on what the contractor chooses, the pull method may either be done by hand or with the help of a machine. Regardless of what method is used, workers will install traffic cones while work is being performed to control traffic and minimize danger to themselves, as well as pedestrians.



6 RESTORATION ACTIVITY

AND 7 FINISHED WORK

Finished handholes are flush with the surrounding ground and conduits are underground and unseen once work is complete. Once all work is completed, workers will restore the area back to its original condition. This may include turf or sidewalk panel replacement depending on the location of the work.

