



Victory Neighborhood Meeting, The Warren

- C Line overview
- Review of Osseo & Victory area station alternatives
- Summary of outreach and comments received
- Next steps

BRT Project Office

Scott Janowiak, Planner (scott.janowiak@metrotransit.org)

C Terrence Anderson, Community Outreach & Engagement (cterrence.anderson@metrotransit.org)

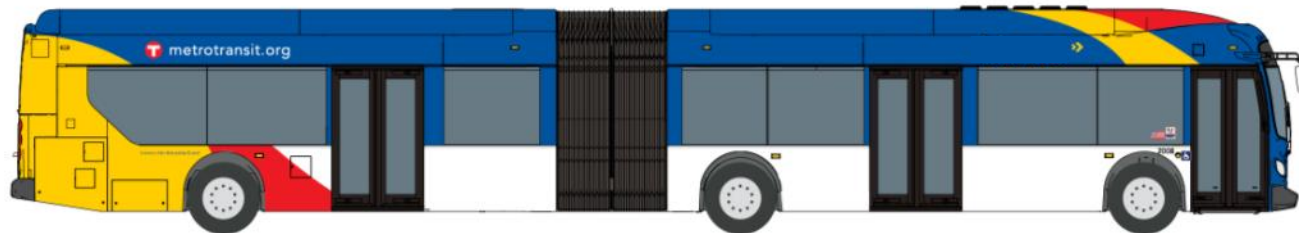
Katie Roth, Arterial BRT Project Manager (katie.roth@metrotransit.org)

Current C Line Planning

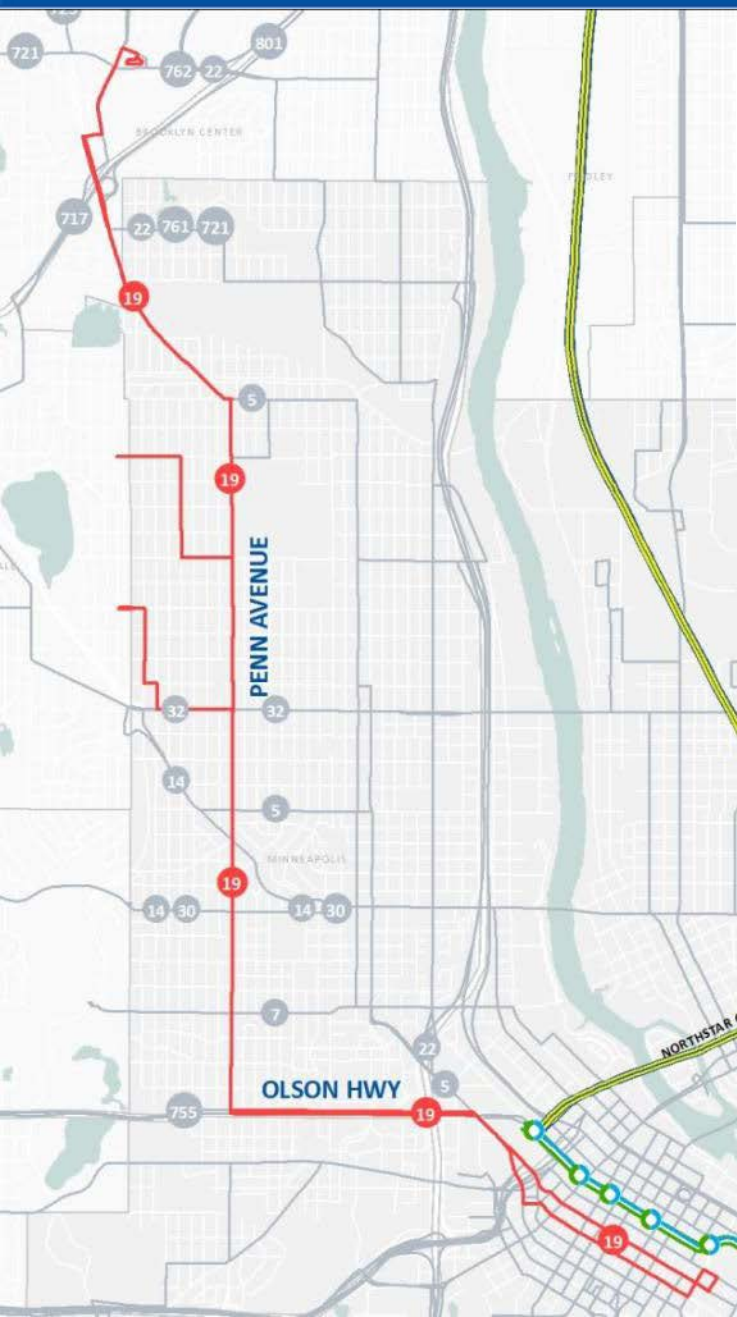


- Currently in planning phase seeking feedback on draft Station Plan
- Five open houses throughout November and December
- Advancing toward final design through 2016 and construction in 2017 (pending funding availability)

BRT Components



Why C Line and the Penn Avenue corridor?



Route 19:

- **7,600** Weekday Riders
- **7th** Highest in Metro Transit System
- **5,000** Saturday Riders
- Carries **1 in 4** people traveling on Penn

Major Challenges:

- Limited infrastructure for customers
- Fare payment & red lights contribute to slow speeds

C Line would substantially replace Route 19

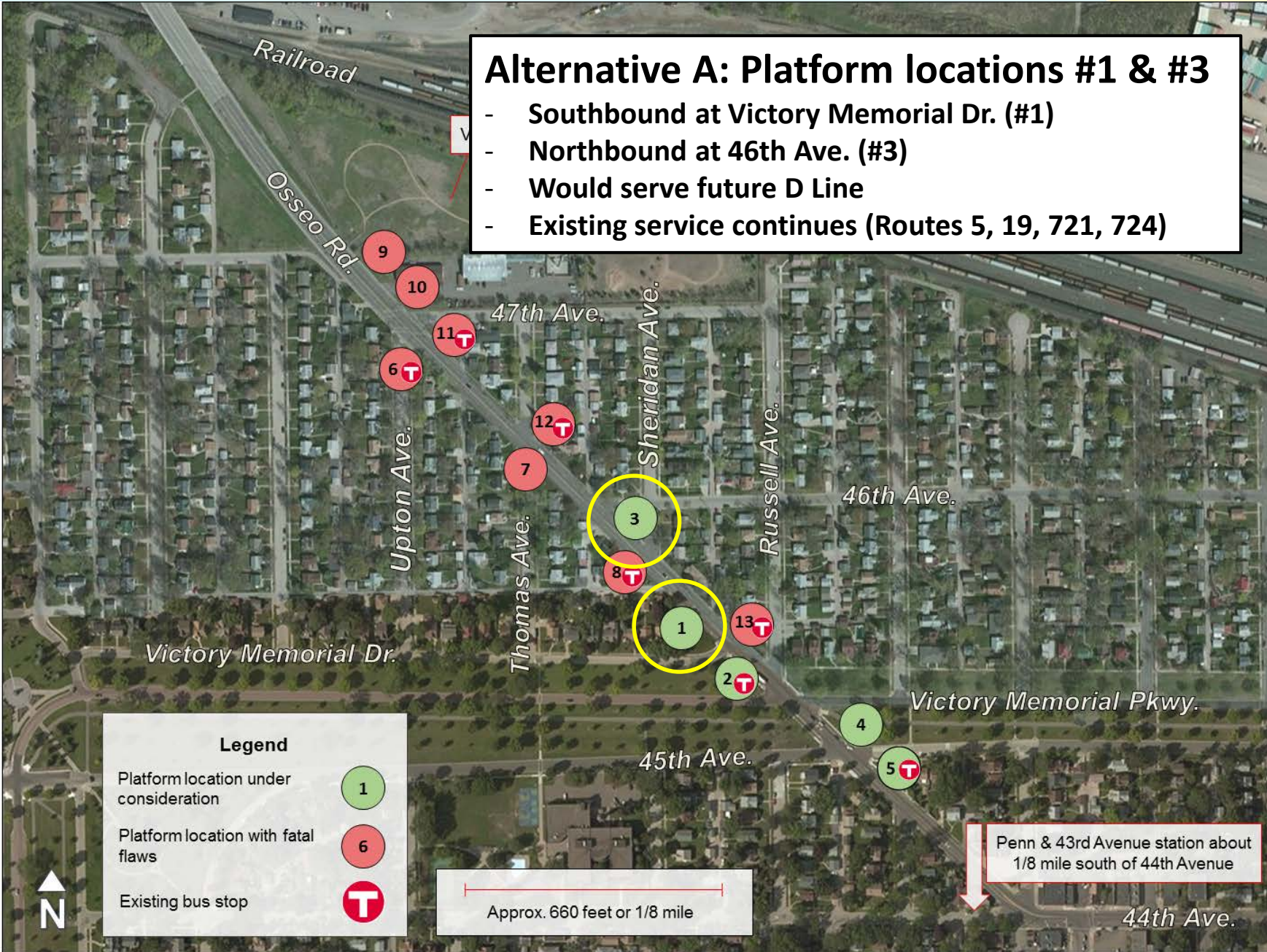
Osseo & Victory Station Area of Interest





Alternative A: Platform locations #1 & #3

- Southbound at Victory Memorial Dr. (#1)
- Northbound at 46th Ave. (#3)
- Would serve future D Line
- Existing service continues (Routes 5, 19, 721, 724)



Legend

Platform location under consideration	1
Platform location with fatal flaws	6
Existing bus stop	T

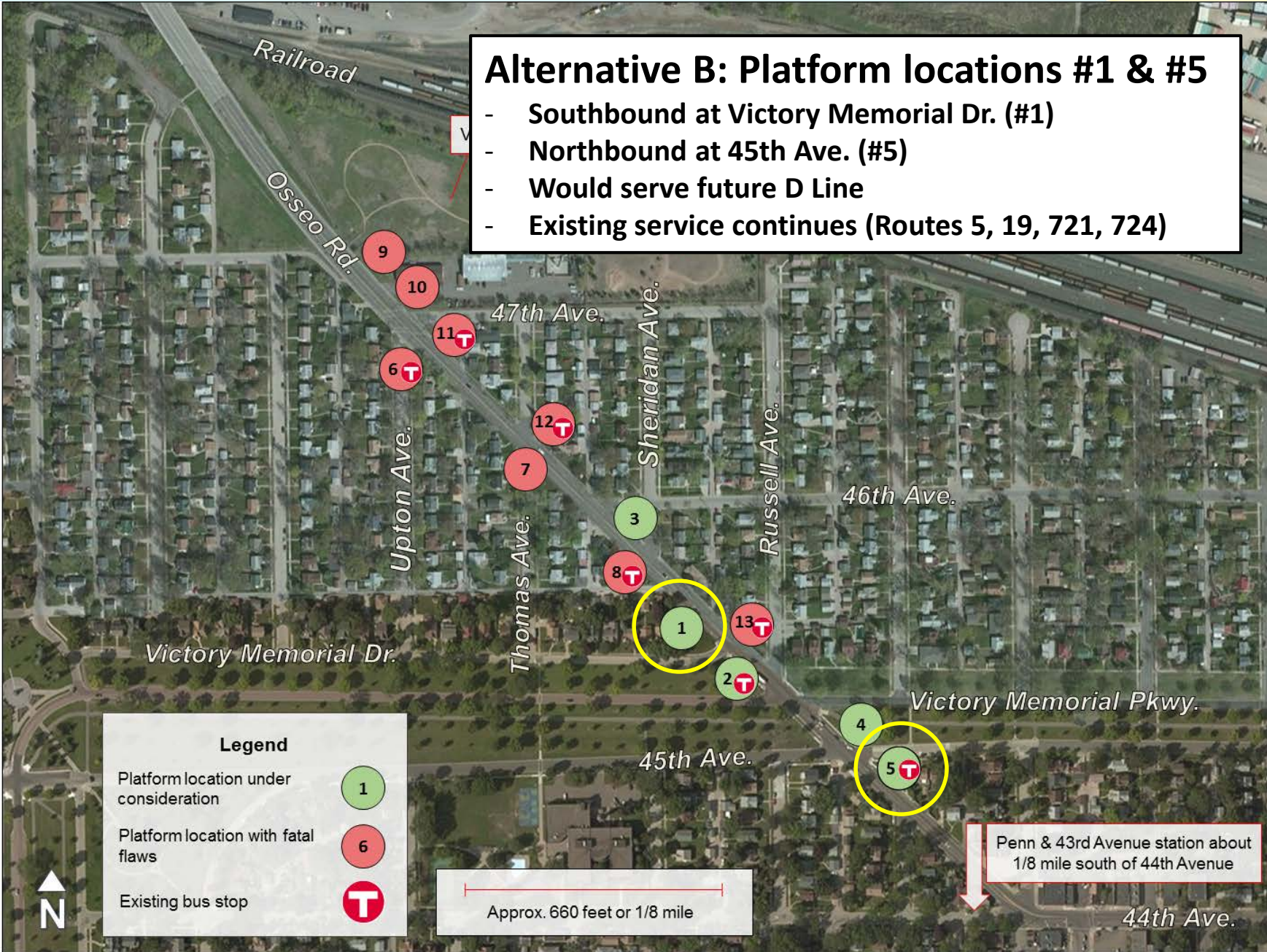
Approx. 660 feet or 1/8 mile

Penn & 43rd Avenue station about 1/8 mile south of 44th Avenue



Alternative B: Platform locations #1 & #5

- Southbound at Victory Memorial Dr. (#1)
- Northbound at 45th Ave. (#5)
- Would serve future D Line
- Existing service continues (Routes 5, 19, 721, 724)



Legend

Platform location under consideration	1
Platform location with fatal flaws	6
Existing bus stop	T

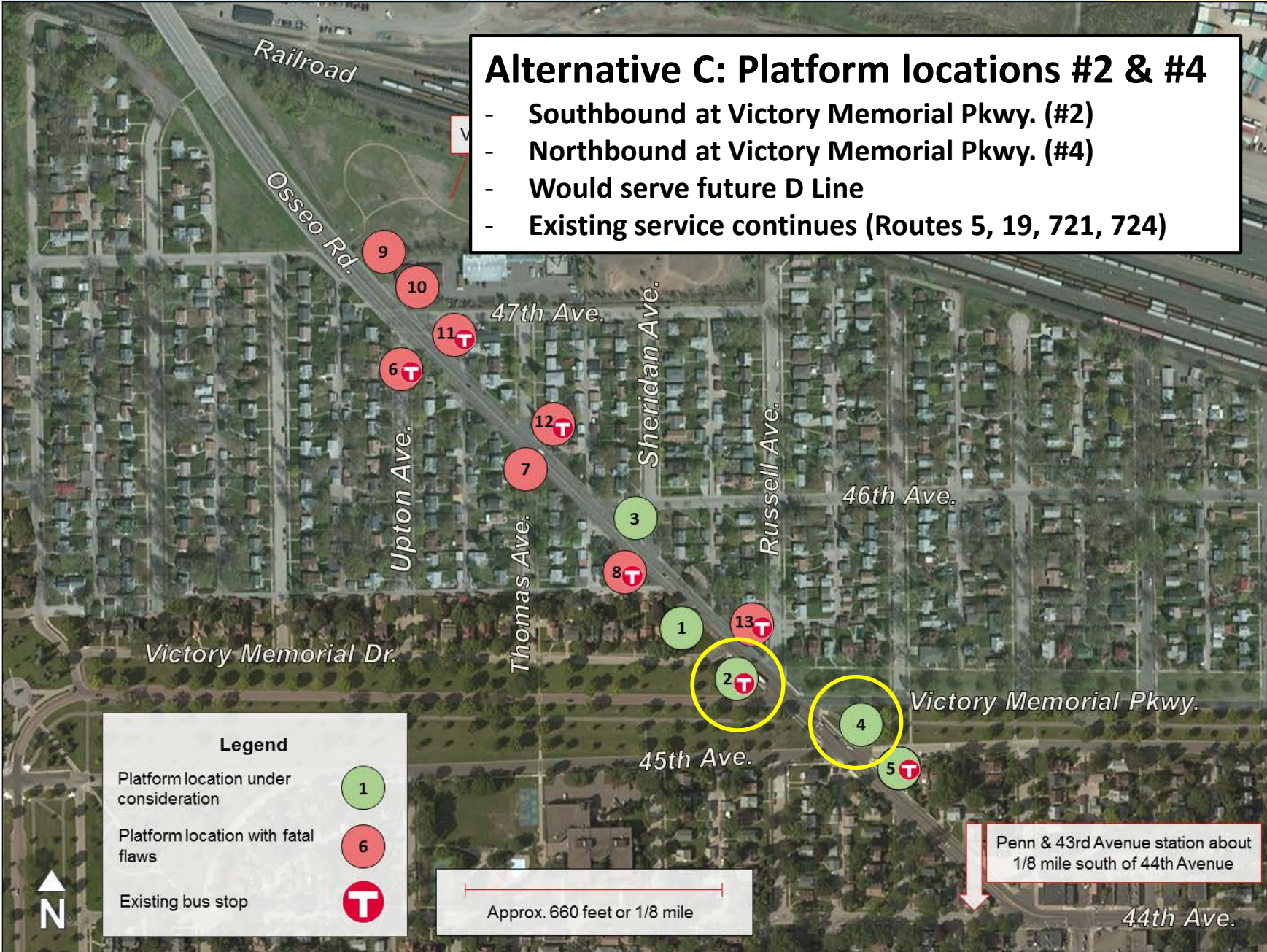
Approx. 660 feet or 1/8 mile

Penn & 43rd Avenue station about 1/8 mile south of 44th Avenue



Alternative C: Platform locations #2 & #4

- Southbound at Victory Memorial Pkwy. (#2)
- Northbound at Victory Memorial Pkwy. (#4)
- Would serve future D Line
- Existing service continues (Routes 5, 19, 721, 724)





Alternative D: Do not build station

- No southbound platform
- No northbound platform
- Existing service continues (Routes 5, 19, 721, 724)



- Ongoing information/communication through Penn Avenue Community Works
- Three main approaches:
 - Petition related engagement
 - Reaching out to riders to Victory
 - General outreach and engagement to riders in C Line corridor
- Important that outreach and engagement is layered to reach people through a variety of mediums

- Pop-Up Outreach
- Five open houses in November and December
 - Minneapolis Central Library (Nov. 17)
 - Patrick Henry High School (Nov. 17)
 - Harrison Education Center (Nov. 18)
 - Lucy Laney Community School (Nov. 19)
 - Brooklyn Center Transit Center (Dec. 5)
- Mobile Open House
- Social Media
- Met with most neighborhood associations in corridor



- Corridor-wide support
- Mixed response both for and against a station in the Osseo and Victor/46th from comments received during current comment period
- Desire to not locate station in front of houses (Alternatives A/B)
- An interest into taking a closer look into the near-the-parkway options (Alternative C)
- Some desire to not have a station in the Victory neighborhood at all (Alternative D)

- Comment period extended through December 20
 - Comments can be submitted tonight
 - brtprojects@metrotransit.org
- Minneapolis Park & Recreation Board coordination mid-December to discuss C Line and feasibility of Alternative C
- Recommended Station Plan to be released for public comment in early 2016 before a final approval
- Metropolitan Council approval of Station Plan spring 2016

Project currently here

