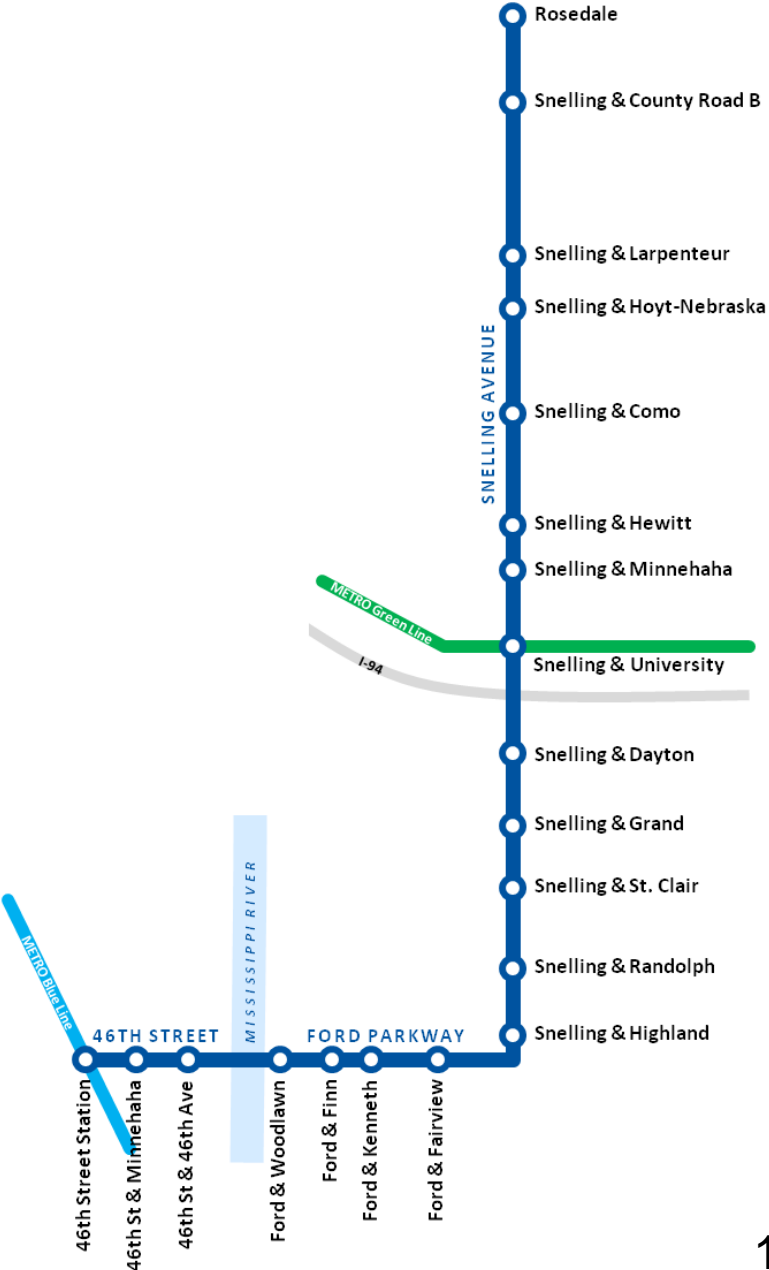


# A Line (Snelling) Bus Rapid Transit

August 21, 2014  
 Technical Advisory  
 Committee  
 Meeting #8



- 9/30 – 90% plan submittal to Metro Transit
- 10/1 – Plans distributed to TAC
- 10/6 – TAC meeting
- 10/29 – A Line MnDOT Submittal

# Street Element Strategy



	Remove or salvage?		Removal procedure / Post-Construction Strategy		Other (What do we need to know?)
	Signs / Poles	Bus Shelters	Newspaper Boxes	Ad benches	
Roseville					
Falcon Heights		N/A – Metro Transit			
Saint Paul					
Minneapolis		N/A – None present			









STOP

TRUCKS  
AHEAD  
RIGHT  
TURN LANE

minnehaha coffee

Area Specialist Since 1990  
Aaron Ritchie  
AaronRitchie.com  
612-418-7180

Roth  
roth





# Street Element Strategy



	Remove or salvage?		Removal procedure / Post-Construction Strategy		Other (What do we need to know?)
	Signs / Poles	Bus Shelters	Newspaper Boxes	Ad benches	
Roseville					
Falcon Heights		N/A – Metro Transit			
Saint Paul					
Minneapolis		N/A – None present			

# Public Art and BRT

A Line BRT

Technical Advisory Committee Meeting

August 21, 2014

Berry Farrington, Engineering and Facilities

Jill Hentges, Community Engagement and Public Art

Carol Hejl, Engineering and Facilities



Fairview Station Public Art  
Artist: Nancy Blum

- Artwork located at LRT stations and a few other locations
- Partnerships to create permanent and temporary artwork in response to community requests
- Transitway Guidelines:
  - Public art may be included in stations
  - If included, art components should be appropriate to overall costs of the project and adequate to have an impact
  - If included, public art 0.5% to 5% of project construction costs





METRO Green Line, Stadium Village Station, Roberto Delgado, artist  
Northern Spark Installation, [www.visitsaintpaul.com](http://www.visitsaintpaul.com)  
Bus Stop Theatre ,Route 19, Star Tribune

Public art is art in any media that has been planned and executed with the intention of being staged in the public domain, usually outside and accessible to all.

- Knight, Cher Krause (2008). *Public Art: theory, practice and populism*.

- **Permanent – Intended to last over 5 years**  
Examples: Murals, sculpture, shelters, benches, infrastructure
- **Temporary – Intended to last 0-5 years**  
Examples: Northern Spark, Creative Placemaking
- **Performance – Occurs in the present**  
Examples: Bus stop theatre, Park(ing) day

# Public Art in Transit: Motivating Factors

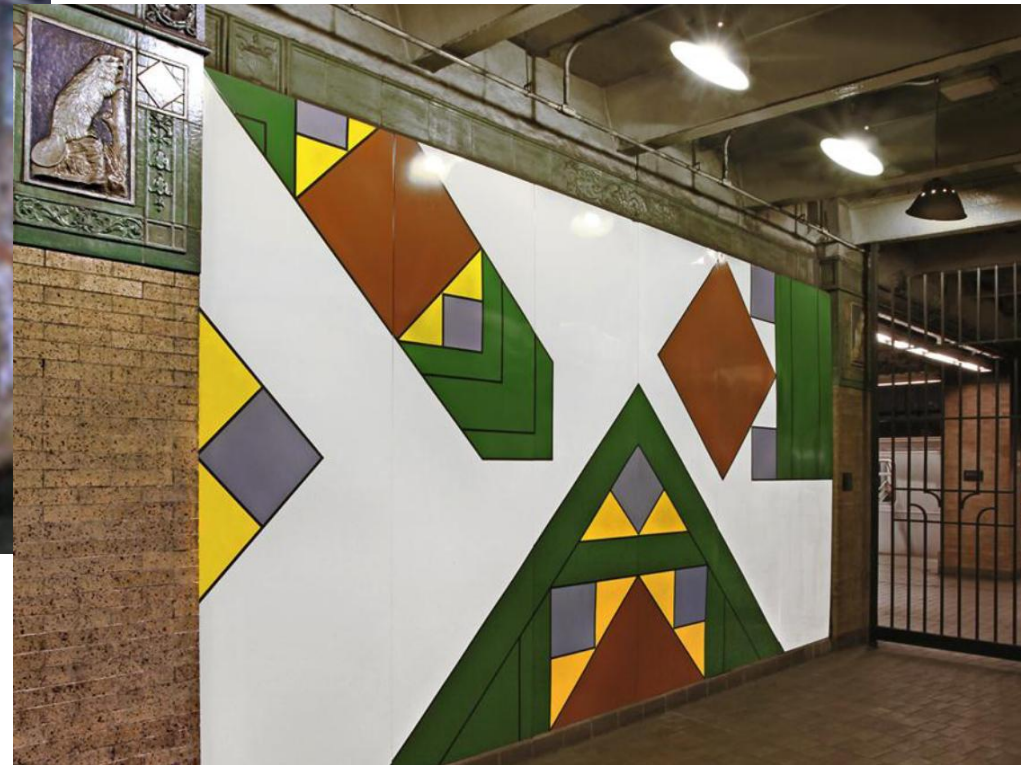


- Provide a higher level of amenity to customers



Traction Power Substation  
Sound Transit Central Link LRT, Flores, Fishmobile and Pinwheel, Mauricio Robalino, artist

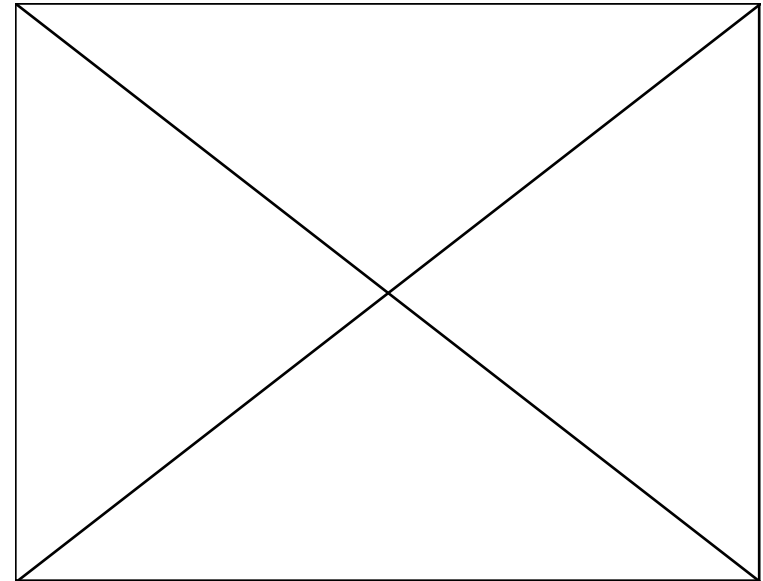
- Increase safety and deter vandalism by conveying care of the space



# Public Art in Transit: Motivating Factors



- Create great public places and memorable experiences



*Kendall Band*  
Paul Matisse  
MBTA, Boston  
Source: MIT Department of Materials Science and Engineering

- **Improve public support of transit**

## Green Line illuminates Rondo story

THURSDAY, 24 JULY 2014 14:40 SEAN MCDONNELL, SPECIAL TO INSIGHT NEWS



Crews install a terra cotta panel with a likeness of Gordon Parks as part of the Victoria Street Station's "Faces of Rondo" artwork. (Photo courtesy of Metropolitan Council)

After its first month of service, Metro Transit's new Green Line light rail line is exceeding ridership expectations – and opening new learning opportunities for its passengers.

The 11-mile Green Line, which opened on June 14 between the downtowns of Minneapolis and St. Paul, was projected by Metro Transit to carry an average of 27,500 weekday riders by 2015. Yet already, average weekday ridership on the Green Line is more than 30,000 passengers – even before fall classes at the University of Minnesota have begun, presumably swelling the ranks of weekday riders.

"What we've seen is people who have never taken a train before coming out and exploring," said Brian Lamb, general manager for Metro Transit. "They are finding all those great destinations on the Green Line, and great destinations are what makes light rail work."

...the Green Line can help boost economic growth as well as create **diverse and distinctive destinations** that are both aesthetically pleasing and vital to the development and overall growth of the community.

Insight News, July 24, 2014



## BRT characteristics

- Stations are integrated with sidewalk and street
- Stations are small sites and tightly programmed
- Station branding is of key importance
- Frequent stations – 38 stations on A Line
- Project scale and relative costs of public art

**What is the best public art “fit” for BRT?**

## Implementation options

- **Permanent installations**

- Spread art dollars across all stations, or consolidate at fewer stations?
- Art is design, fabrication, and installation is funded from the project's capital budget.
- Options include bike racks, planters, benches...

- **Temporary installations**

- Put in place infrastructure that would best prepare the stations to host art.
- Art work created through partnerships, funded through outside sources or operational dollars.
- Options include utility box wrap, light, sound or video installations, performance...

# Permanent Public Art Possibilities



- Planters
- Bike racks
- Benches



Clockwise: art work by John Sunami and Darren Meyer, Anice Doak, Paul Sires  
Source: [www.publicartarchive.org](http://www.publicartarchive.org)

# Temporary Public Art Possibilities



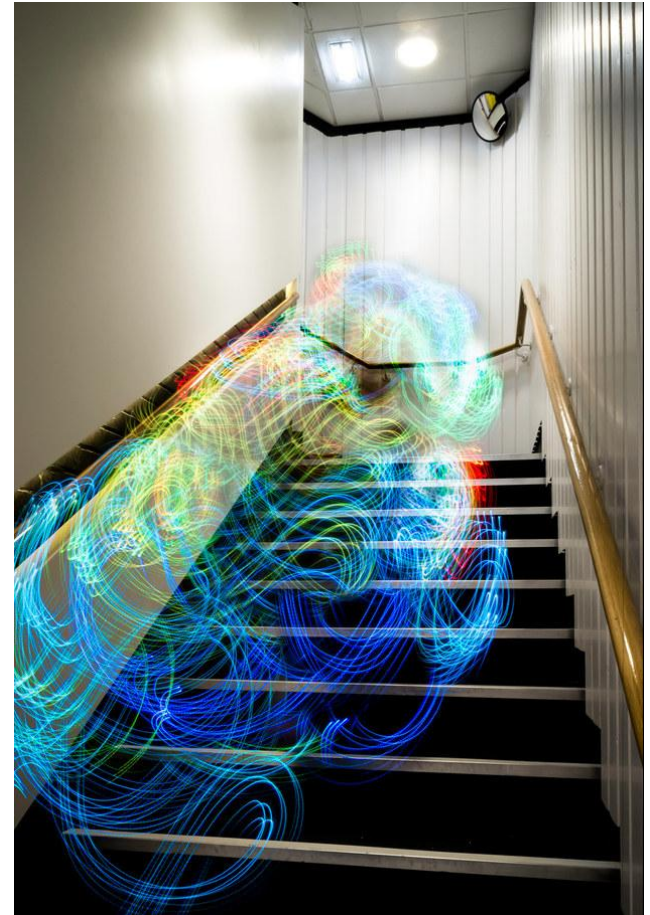
- Video
- Utility box painting or wraps
- Light installation



*Waste Not, Northern Spark*  
Chris Baker



*Utility box, Hennepin Ave*  
Sree Nair



*Digital Ethereal*  
Luis Hernan

## BRT Station opportunities for public art



**Utility Cabinet**

**Planter**

**Bench**

**Bike Rack**





# Thank you

Berry Farrington, Planner

[berry.farrington@metrotransit.org](mailto:berry.farrington@metrotransit.org)

(612) 349-7378

Jill Hentges, Community Engagement and Public Art

[jill.hengtes@metrotransit.org](mailto:jill.hengtes@metrotransit.org)

(612) 349-7318