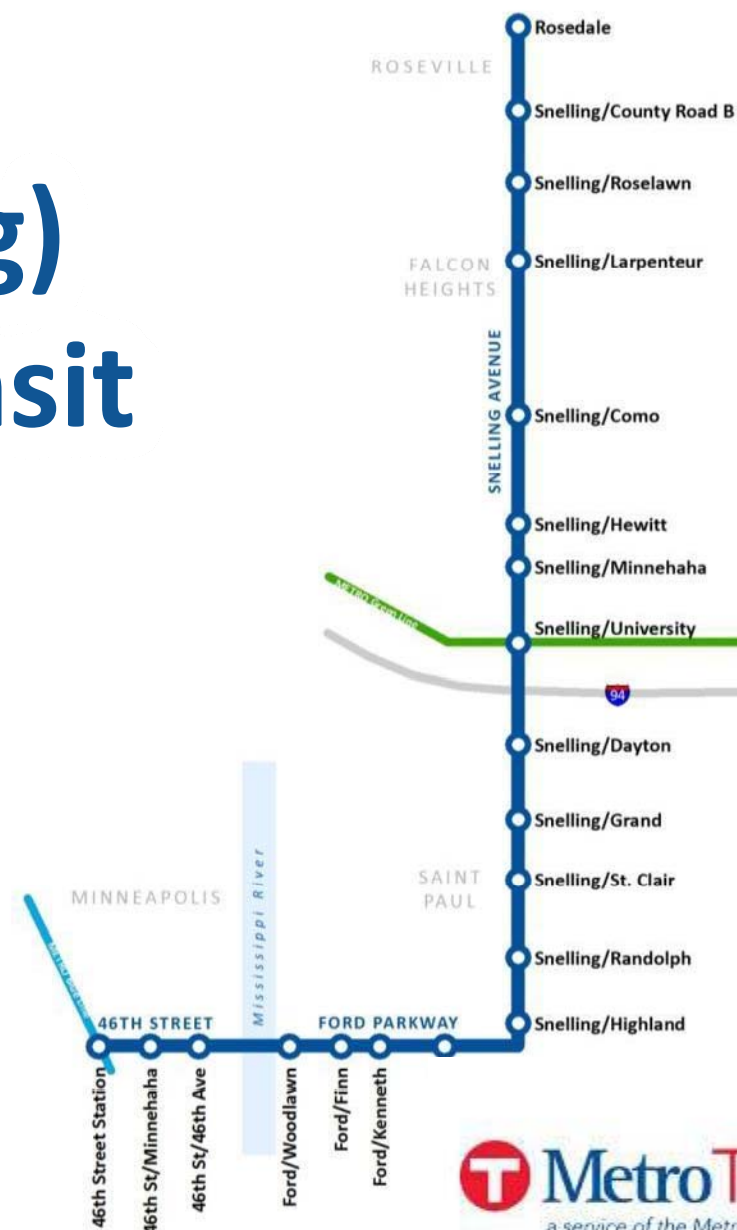




# A Line (Snelling) Bus Rapid Transit

April 28, 2014

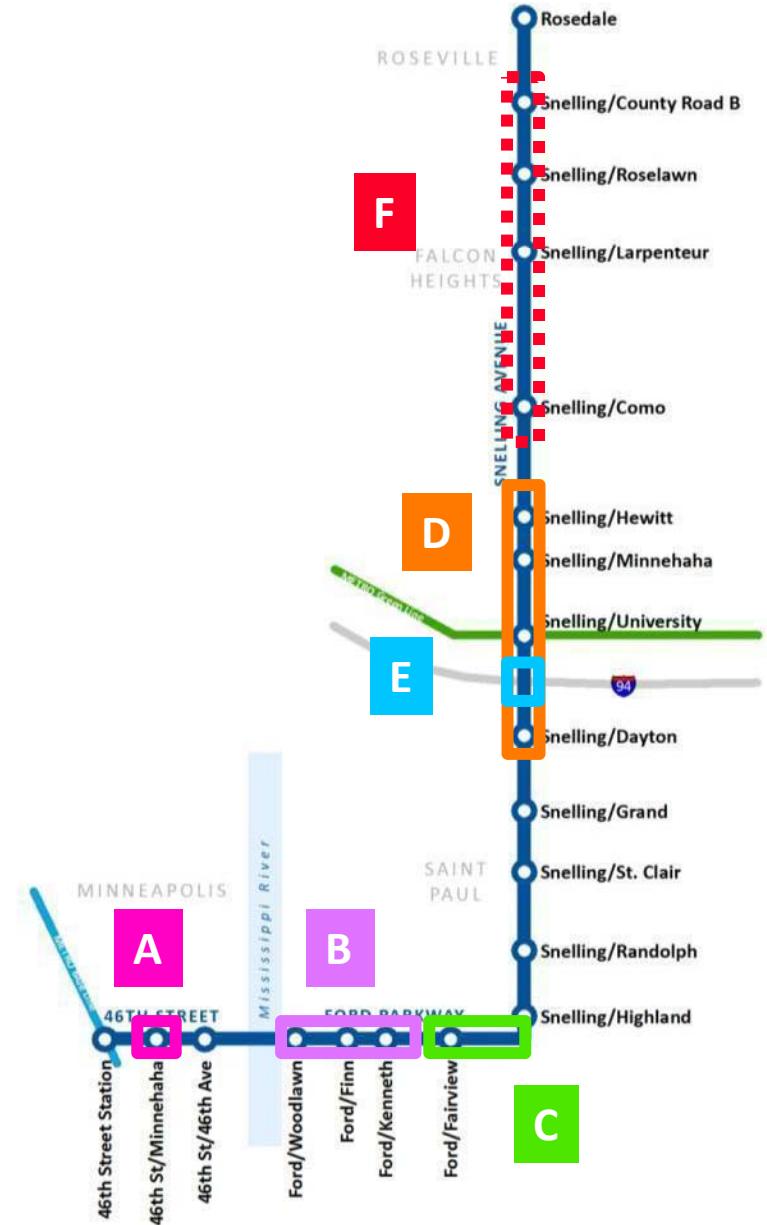
Technical Advisory  
Committee  
Meeting #6



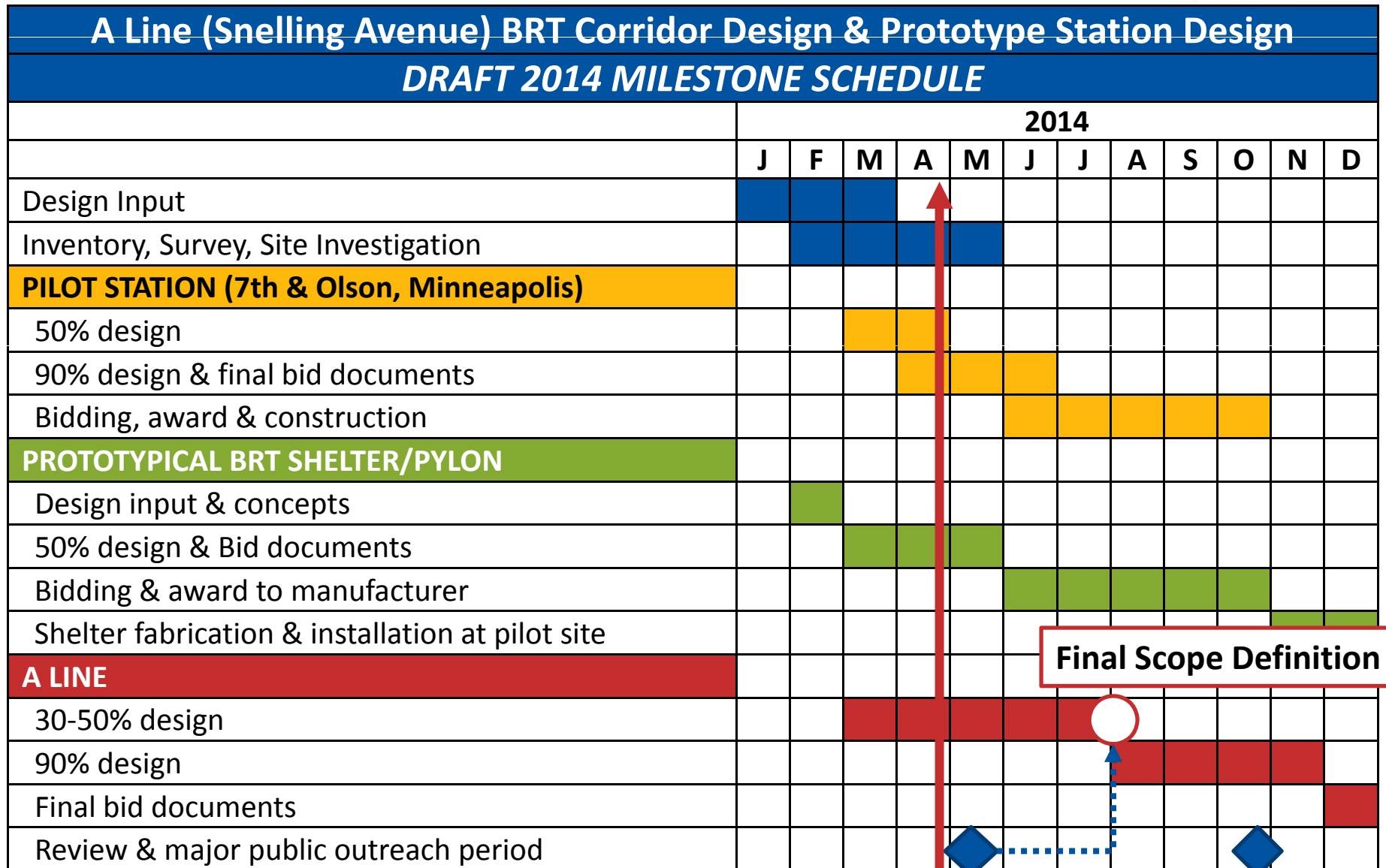
# Coordination Activities



	Project	Lead
<b>A</b>	Minnehaha Avenue Reconstruction <i>Minnehaha/46th intersection</i>	Hennepin County
<b>B</b>	Highland Village Streetscape <i>Mississippi River Boulevard to Howell</i>	Saint Paul
<b>C</b>	Ford Parkway Reconstruction <i>Howell to Snelling</i>	Ramsey County
<b>D</b>	Snelling Mill & Overlay + Additional Improvements <i>Selby to Pierce Butler</i>	MnDOT/ City of Saint Paul
<b>E</b>	I-94 Bridge Redeck <i>Snelling/I-94 interchange</i>	MnDOT
<b>F</b>	ADA Improvements <i>To be Determined</i>	MnDOT



# Schedule Update



**Final Scope Definition**

**Current Activities**

# Bid Package Organization



## Bid Package 1 Shelter/Pylon Design and Manufacturing

- Final design through shop drawings
- Manufacture of shelter/pylon for Bid Packages 2 and 3 (+ future ABRT lines)

## Bid Package 2 Pilot Station Construction

- Station Infrastructure, Shelter/Pylon Installation

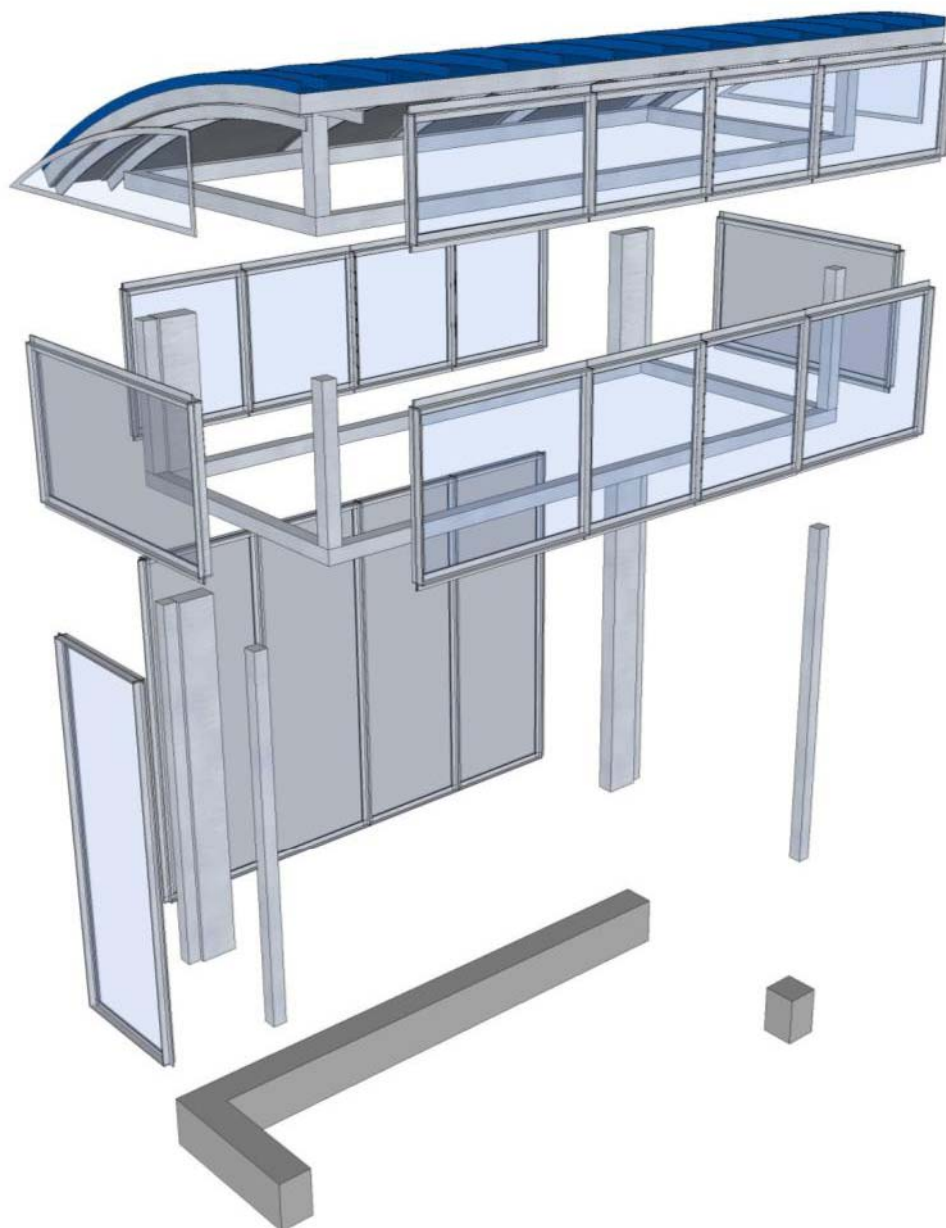
## Bid Package 3 A Line Construction

- Station Infrastructure, Shelter/Pylon Installation
- Construction integrated into these projects:
  - MnDOT Mill-and-Overlay Project
  - Ramsey County Ford Parkway Project
  - Hennepin County Minnehaha Avenue Project



# SHELTER / PYLON DESIGN UPDATE

# Kit of Parts Approach



# Small Shelter



*Pylon concept still in early development*



# Medium Shelter (variant)





# Large Shelter



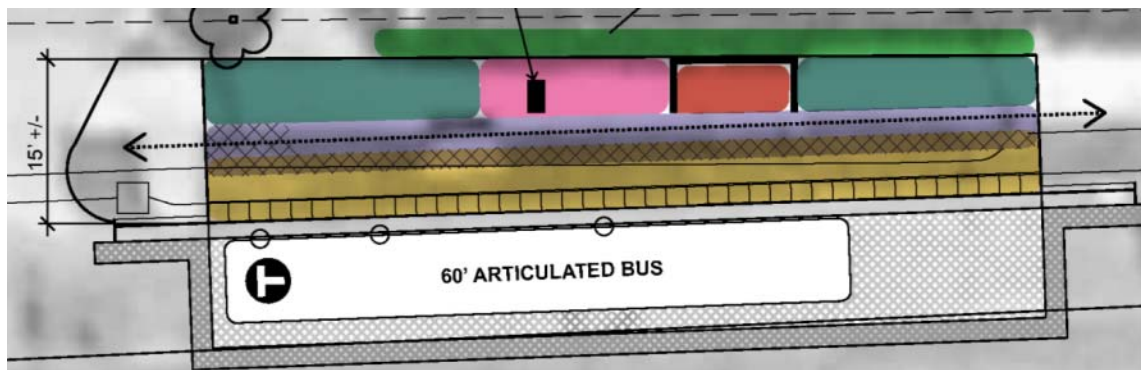
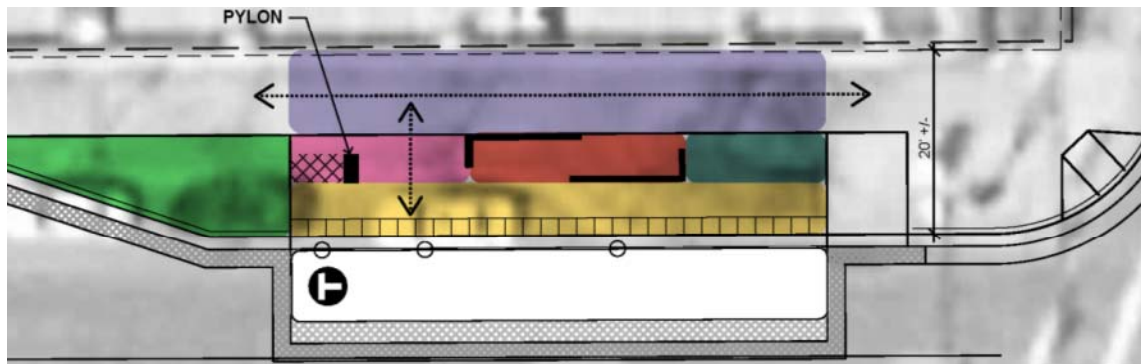
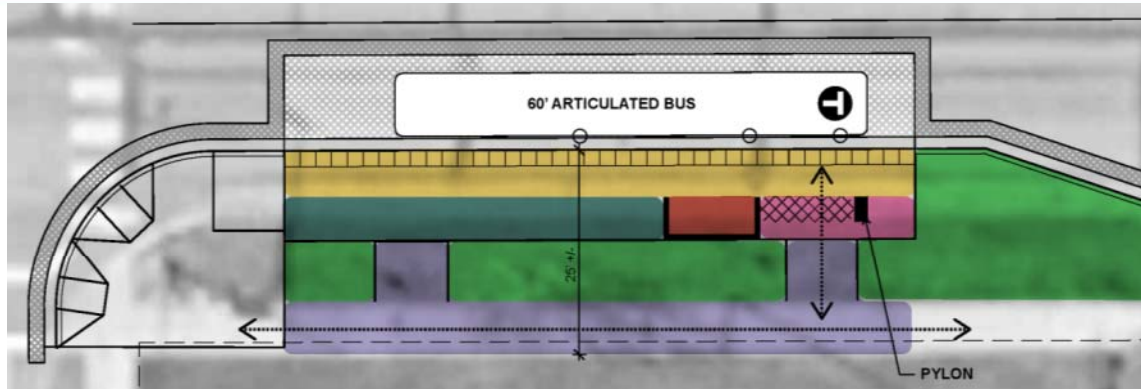
*Pylon concept still in early development*





# A LINE STATION LAYOUT REVIEW

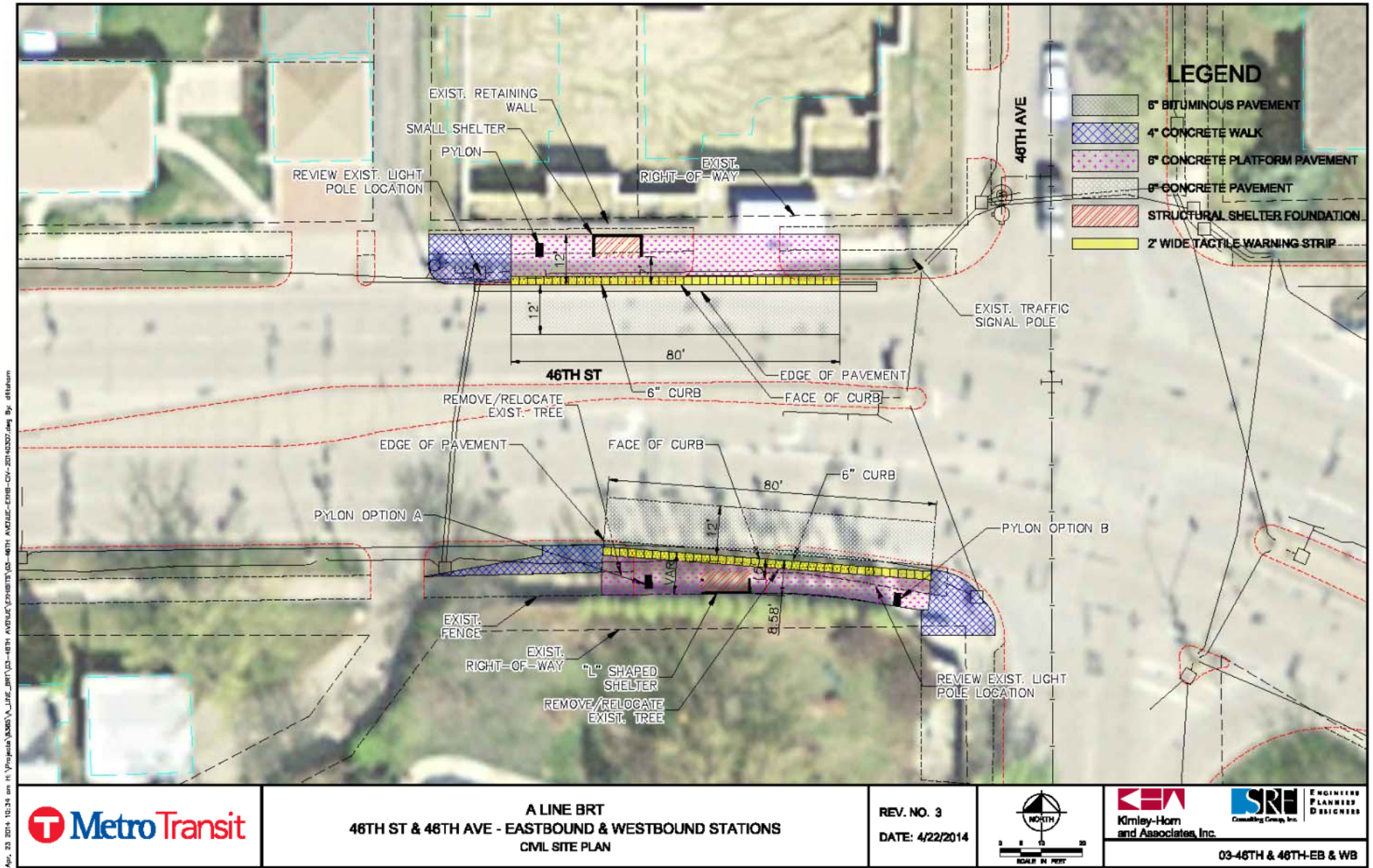
# Constrained vs. Unconstrained Site Layouts



**LEGEND**

- BOARDING (6' WIDTH TYP.)
- PASSAGE AREA
- INFO/TICKET VENDING
- SHELTER
- FURNISHINGS
- LANDSCAPING OPPORTUNITY
- OVERLAP

# 46th Street & 46th Avenue



Apr. 22 2014 10:34 am K:\proj\46th\46th\_Visit\46th\_Visit.dwg - 46TH AVENUE-EB-WB - 46TH AVENUE-EB-WB - CIV - 20140307.dwg By: dft/ham



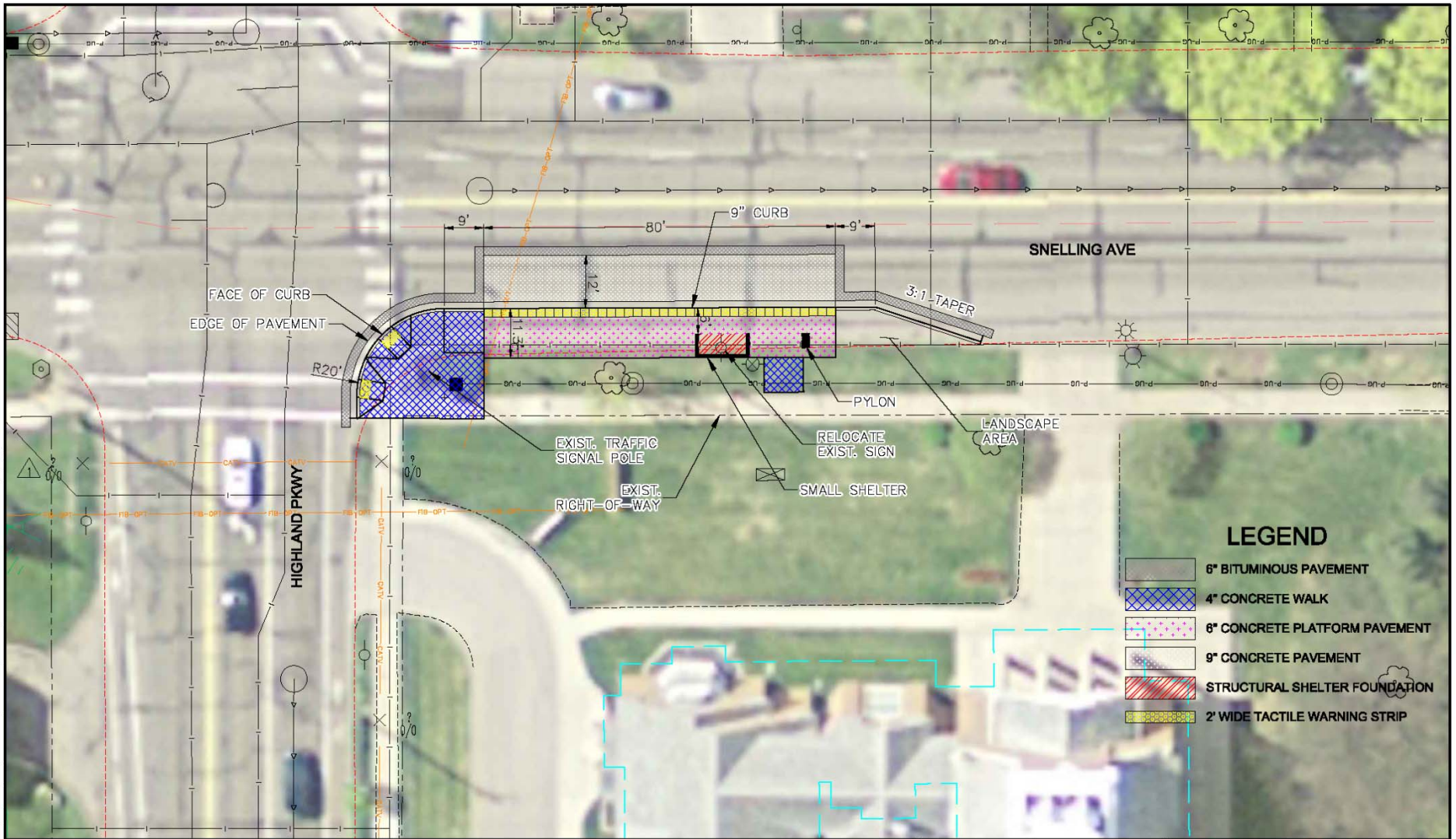
**A LINE BRT**  
**46TH ST & 46TH AVE - EASTBOUND & WESTBOUND STATIONS**  
**CIVIL SITE PLAN**

REV. NO. 3  
 DATE: 4/22/2014



**Kimley-Horn and Associates, Inc.**  
**SRI Consulting Group, Inc.**  
 ENGINEERS PLANNERS DESIGNERS  
 03-46TH & 46TH-EB & WB


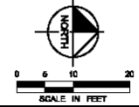


# Snelling & Highland Parkway



## LEGEND

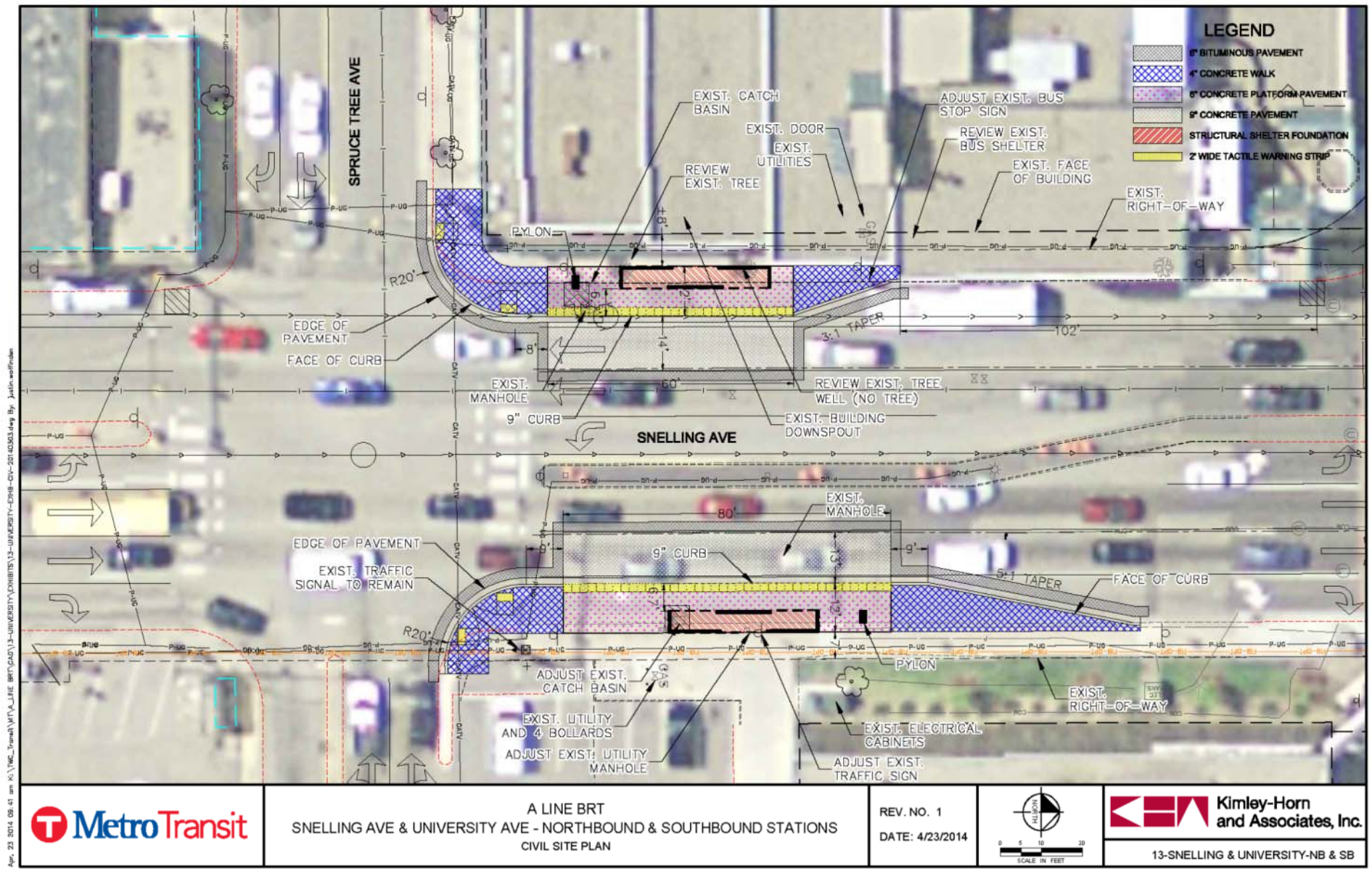
-  6" BITUMINOUS PAVEMENT
-  4" CONCRETE WALK
-  6" CONCRETE PLATFORM PAVEMENT
-  9" CONCRETE PAVEMENT
-  STRUCTURAL SHELTER FOUNDATION
-  2" WIDE TACTILE WARNING STRIP

Apr. 23 2014 08:39 am H:\Projects\8385\A\_LINE\_BRT\08-HIGHLAND\08-HIGHLAND-EXHIB-DIV-20140307.dwg By: ppabsh

	<p><b>A LINE BRT</b>  <b>SNELLING AVE &amp; HIGHLAND PKWY - NORTHBOUND STATION</b>          CIVIL SITE PLAN</p>	<p>REV. NO. 3          DATE: 4/22/2014</p>	 <p>SCALE IN FEET</p>	  <p>ENGINEERS          PLANNERS          DESIGNERS</p>
<p>08-SNELLING &amp; HIGHLAND-NB</p>				

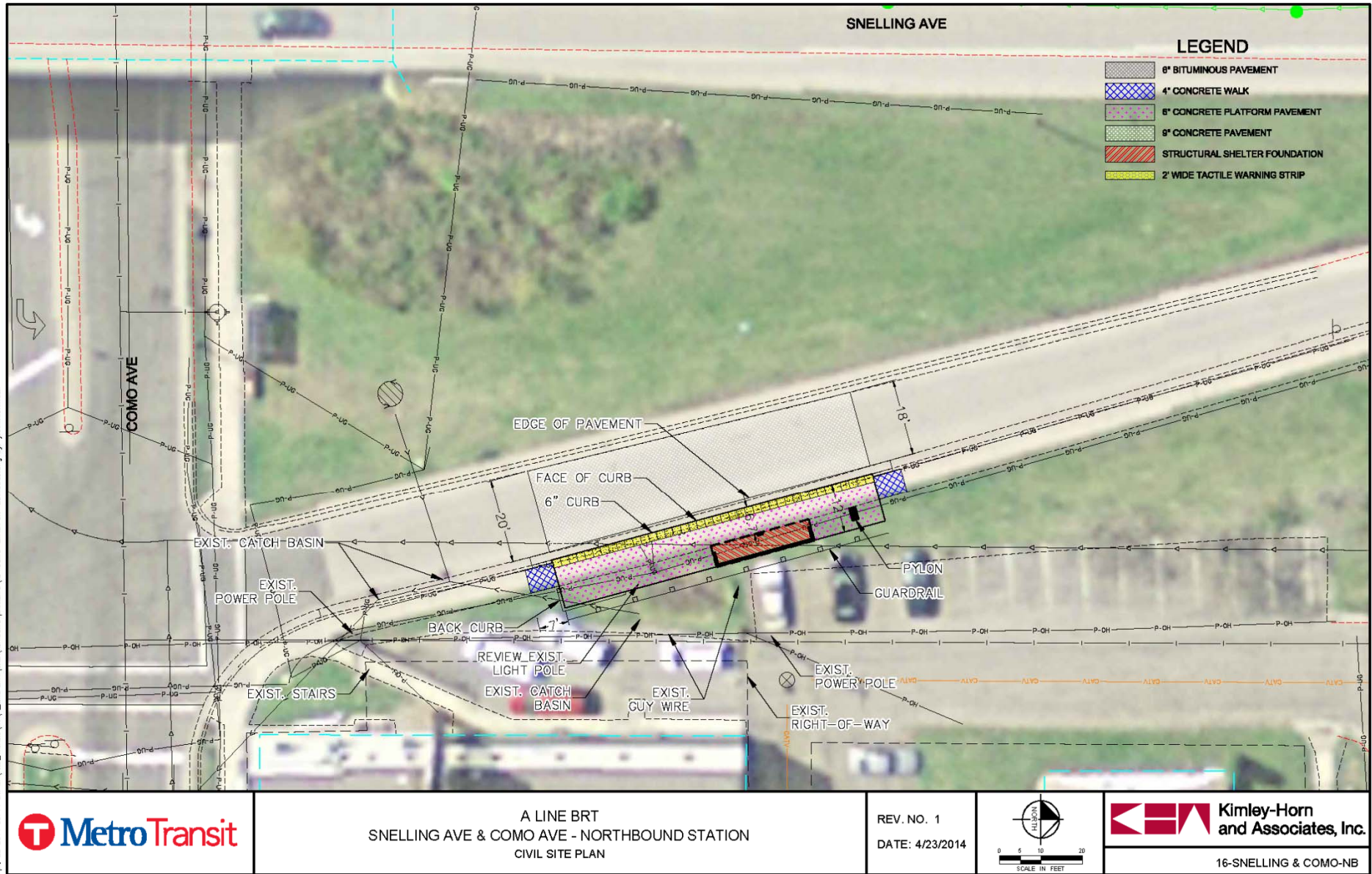
a service of the Metropolitan Council

# Snelling & Spruce Tree

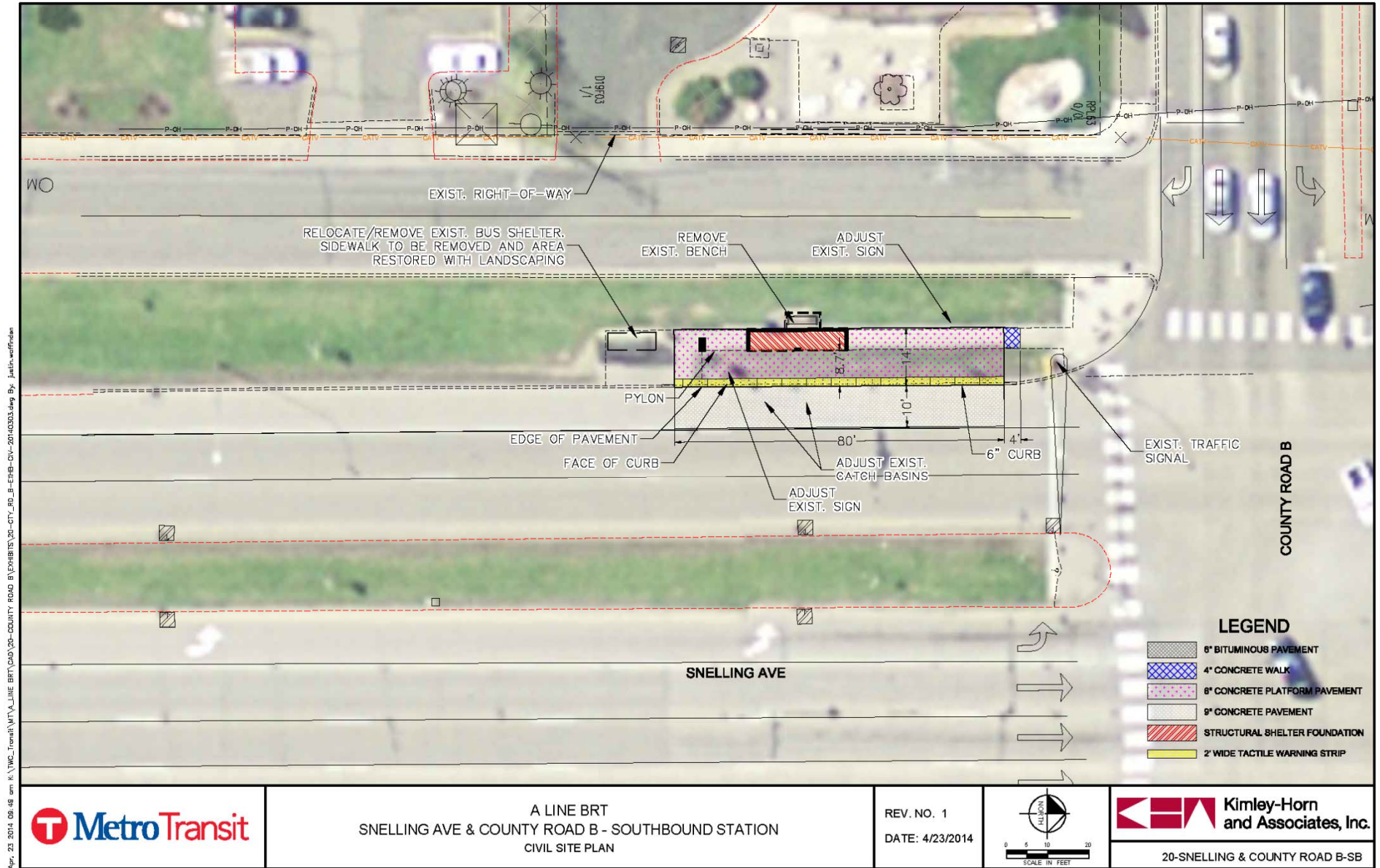


Apr. 23 2014 09:41 am K:\MC\_Tram\MTA\_A\_Line\_BRT\CAD\13-UNIVERSITY\CONCRETE\13-UNIVERSITY-ENR-CIV-20140303.dwg By: Justin Wolfman

# Snelling & Como



# Snelling & County Road B

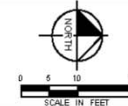


Apr. 23 2014 08:48 am K:\MC\_Transit\MTA\_LINE BRT\CAD\20-COUNTY ROAD B\EXHIBITS\20-CITY\_RD\_B\_ERB-DIV-20140303.dwg By: Justin Weffrieden



A LINE BRT  
 SNELLING AVE & COUNTY ROAD B - SOUTHBOUND STATION  
 CIVIL SITE PLAN

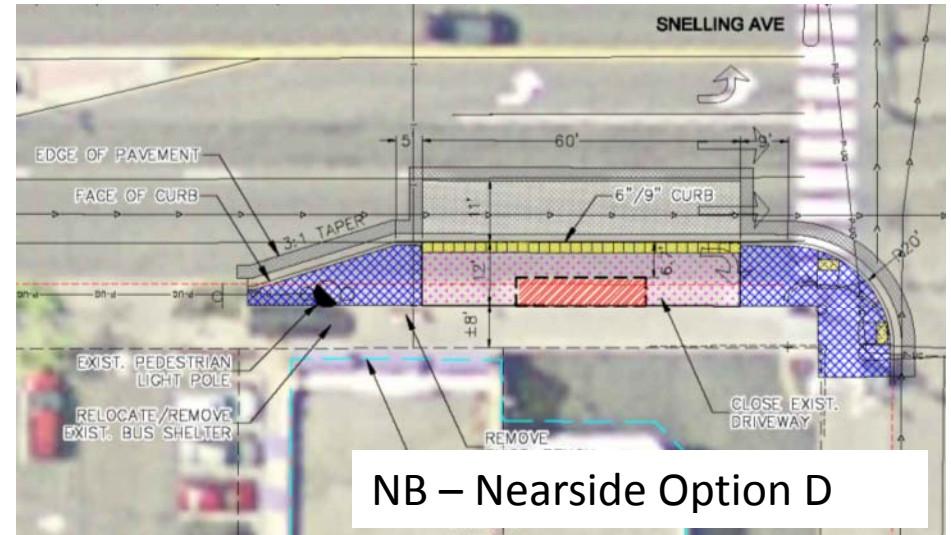
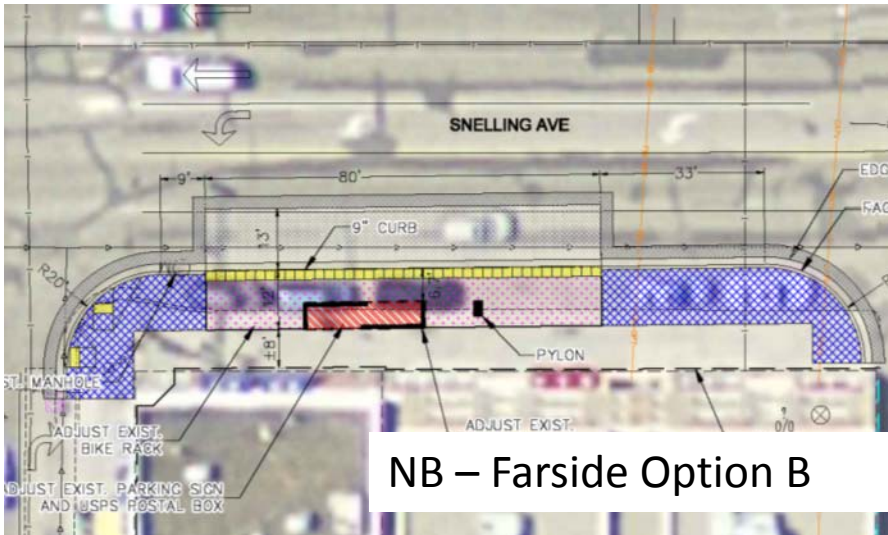
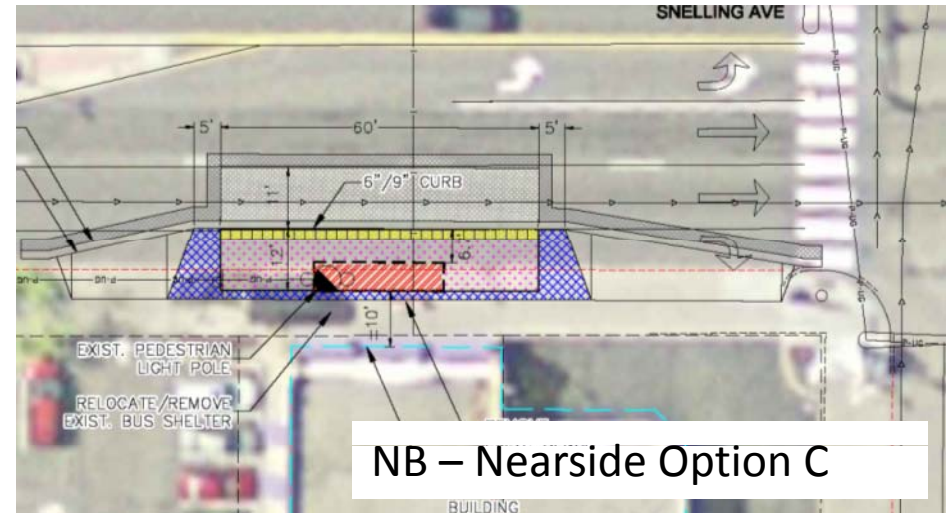
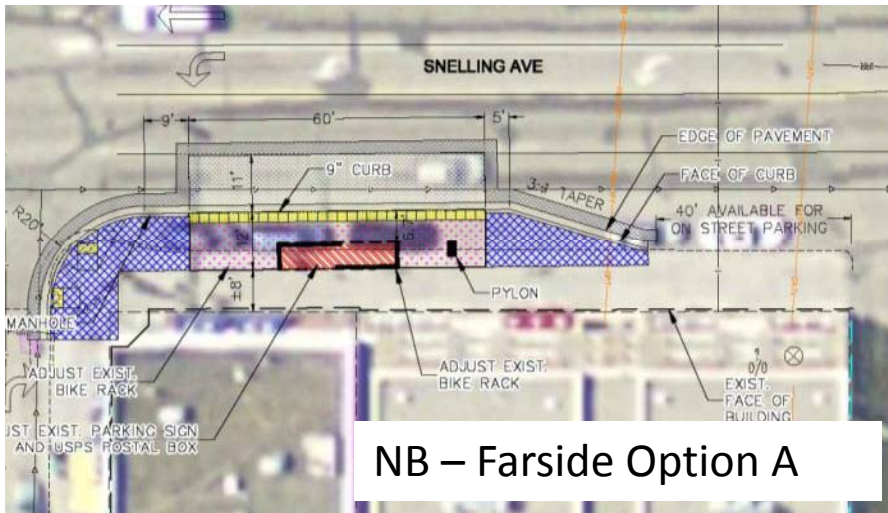
REV. NO. 1  
 DATE: 4/23/2014



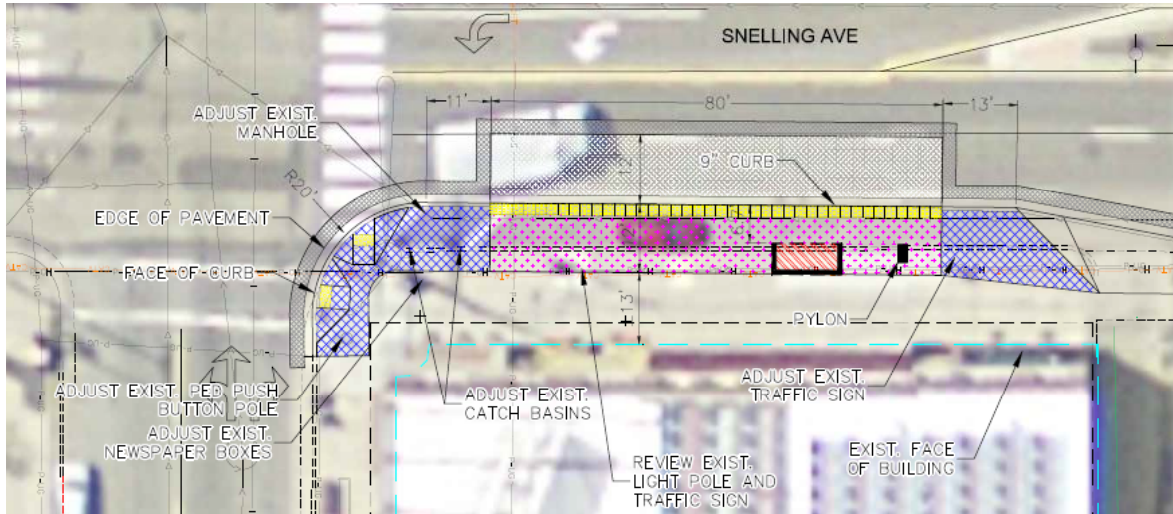
20-SNELLING & COUNTY ROAD B-SB



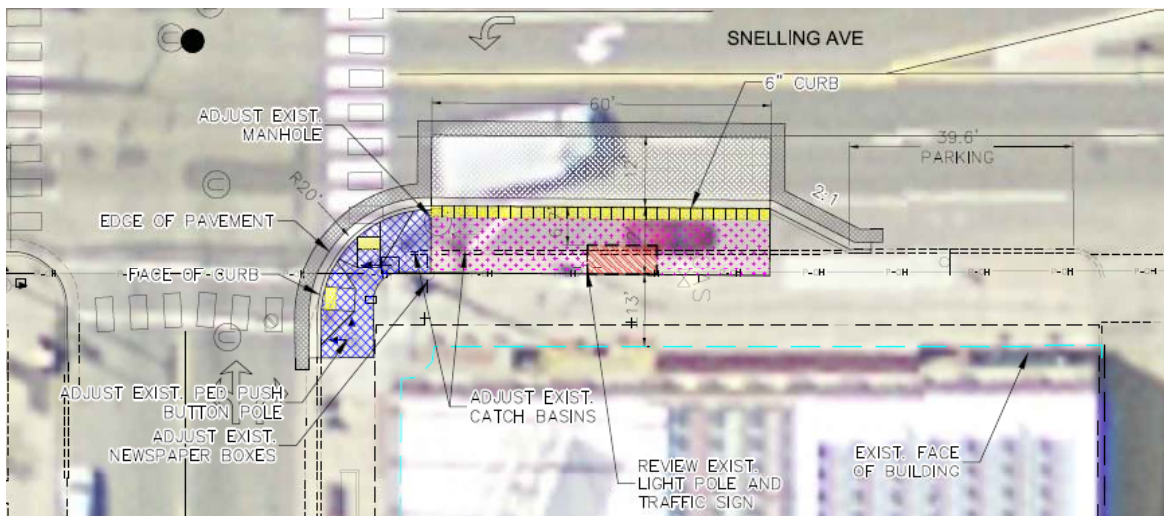
# Site Layout Alternatives – Grand Avenue



# Site Layout Alternatives – St. Clair

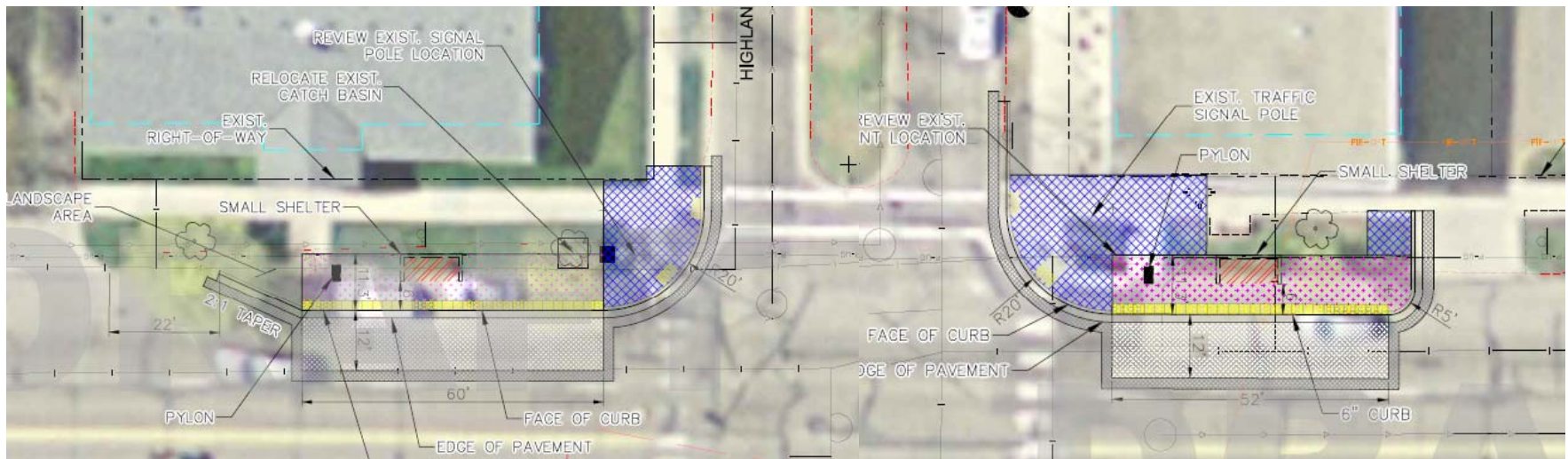


As shown in distributed layout & exhibits:  
80' platform + linear space to rise to 9" platform



Alternative concept to minimize on-street parking impact:  
60' platform, eliminate raised platform to minimize linear footprint

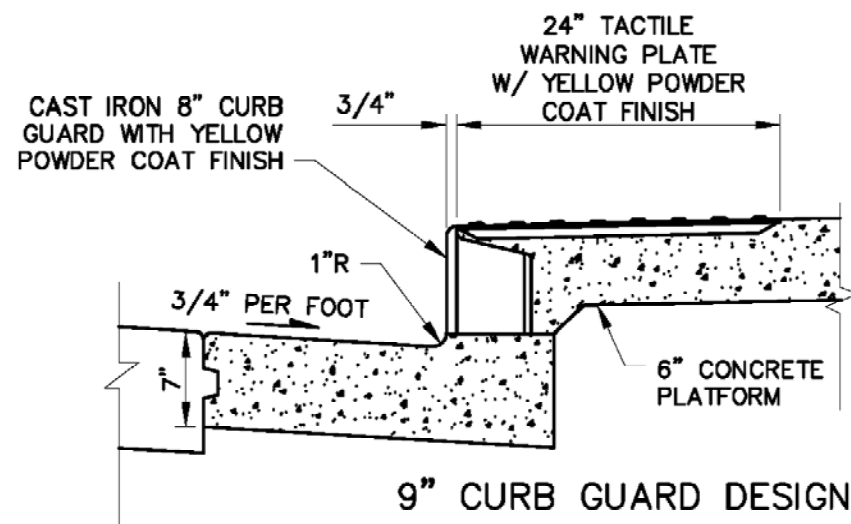
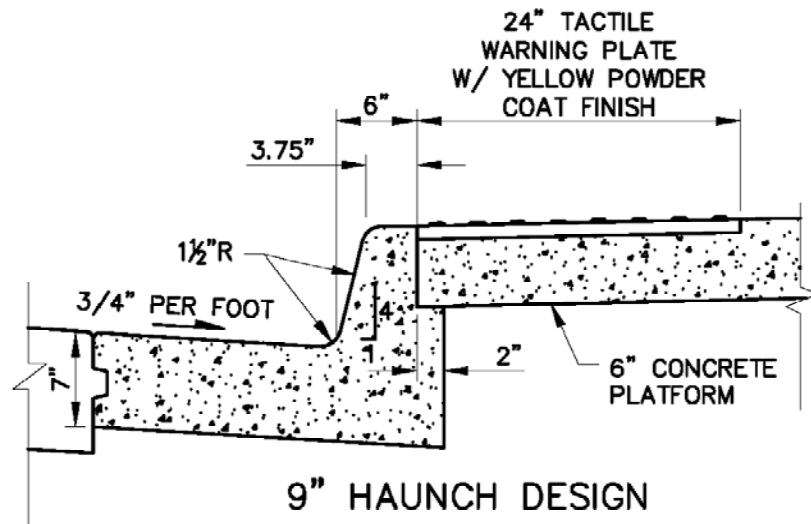
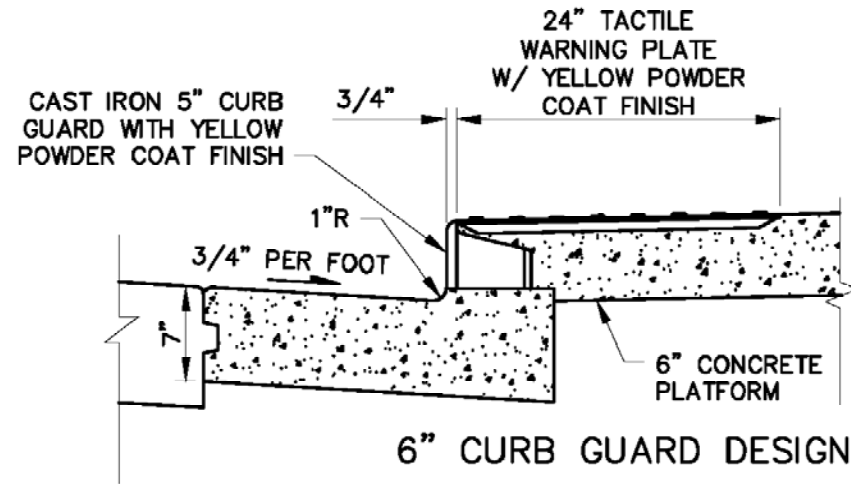
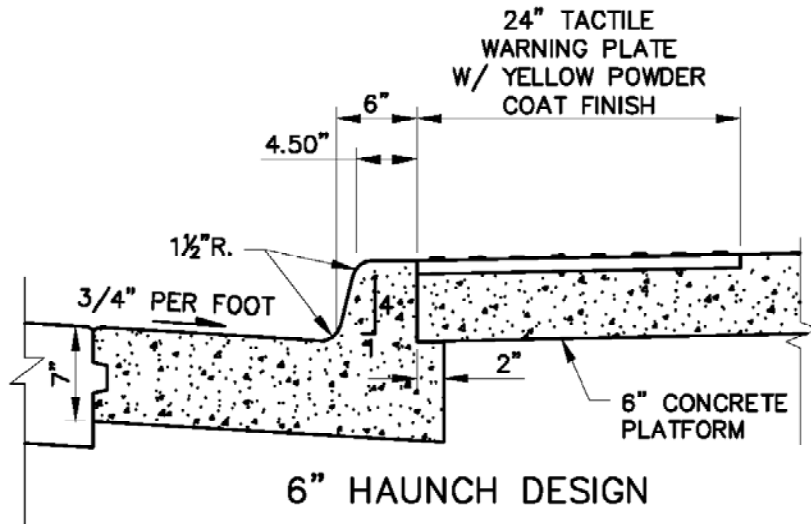
# Site Layout Alternatives – Highland



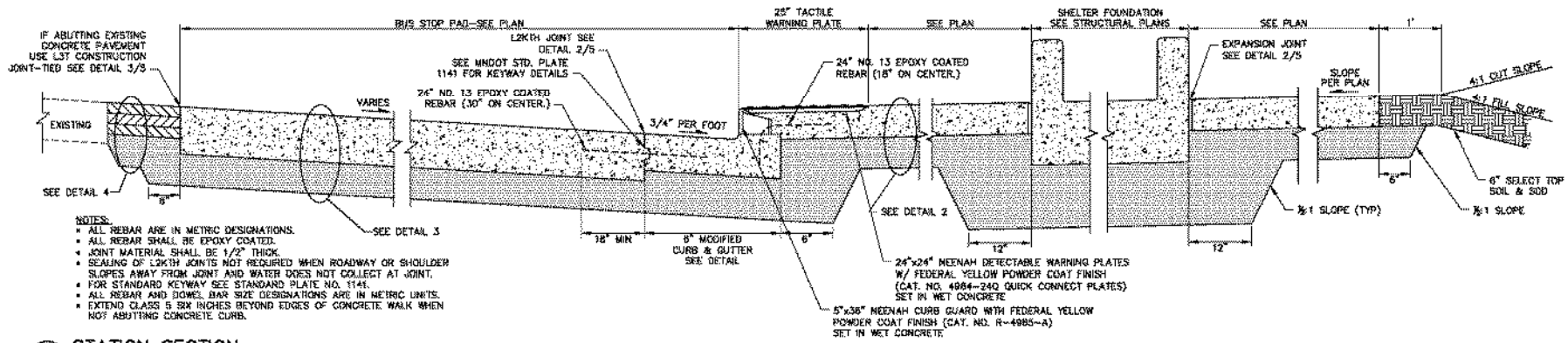
- Both corners under consideration

- Snelling & Grand
- Snelling & St. Clair
- Snelling & Highland
- Snelling & Roselawn
  - Likely recommendation to defer station due to low ridership
- Snelling & Hoyt
  - Likely recommendation for infill station

# Platform Curb Options

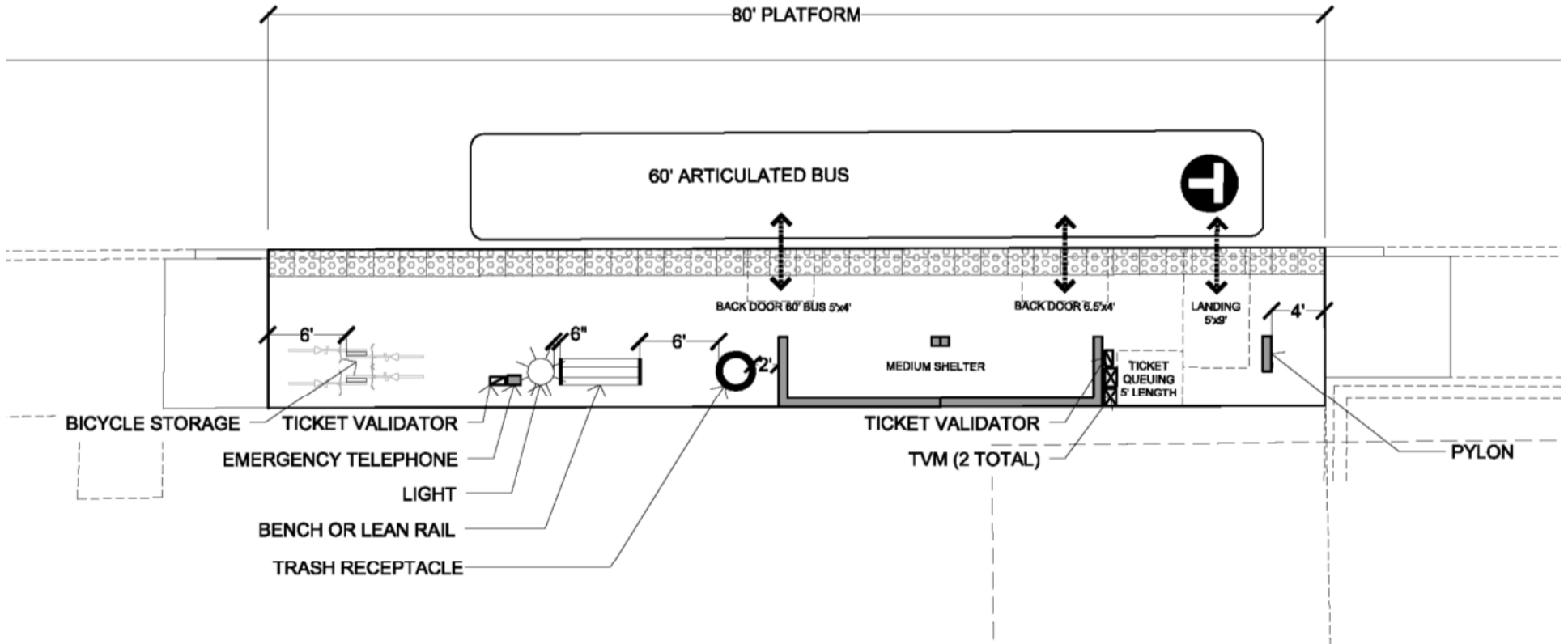


# Platform Typical Section

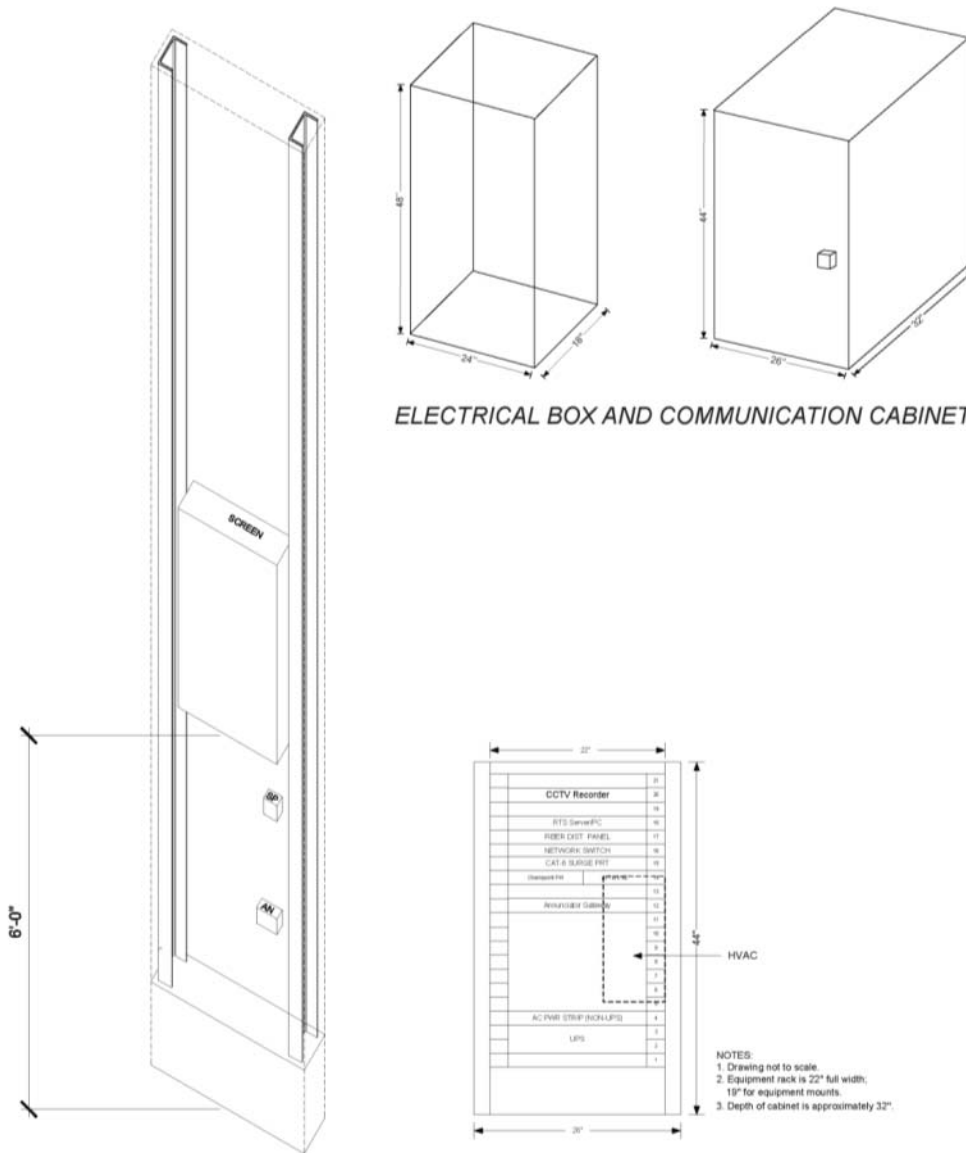


1 STATION SECTION

# Platform Urban Design Elements



# Electrical/Communication Elements



ELECTRICAL BOX AND COMMUNICATION CABINET

COMMUNICATIONS LAYOUT INSIDE CABINET

- NOTES:
1. Drawing not to scale.
  2. Equipment rack is 22" full width; 19" for equipment mounts.
  3. Depth of cabinet is approximately 32".



- **TAC exhibit/layout comments due Friday 5/2**
- Outreach Event Hosted by District Councils 10-15
  - Monday 5/12 (evening) – Hamline Midway Library
- TENTATIVE Open Houses
  - Monday 5/19 (evening) – Merriam Park Library
  - Tuesday 5/20 (evening) – Roseville
  - Thursday 5/22 (daytime) – Highland Park
- Direct mail to station neighbors
- Rider intercepts