



Public Engagement Summary

September–December 2025

TABLE OF CONTENTS

1. Introduction	1
2. Engagement Methods.....	3
2.1. Community Meetings and Events.....	3
2.1.1 Community Events	3
2.1.2 Stakeholder and Committee Meetings	3
2.1.3 Pop-up Tabling	4
2.1.4 Open House.....	5
2.2. Materials.....	5
2.2.1 Handouts.....	5
2.2.2 Display Boards.....	5
2.2.3 Interactive Map	6
2.2.4 Notices	6
2.2.5 Webpage Content.....	7
2.2.7 Property Owner Notifications	8
3. Feedback Results and Themes.....	9
3.1. District Councils and Committee Feedback.....	9
3.2. Community Meetings, Events, and Pop-Ups Feedback.....	9
3.3. Interactive Map.....	10
4. Key Takeaways.....	11
Appendix A. Project HANDOUTS.....	A
APPENDIX B. DISPLAY BOARDS	B
APPENDIX C. NOTICES.....	C
APPENDIX D. UPDATE MEMOS.....	D
APPENDIX E. NEWSLETTER.....	E
APPENDIX F. PROPERTY OWNER NOTIFICATIONS.....	F

FIGURES

Figure 1: Project Staff And Public At A Community Meeting In St. Paul.....	1
--	---

Figure 2: Metro Bronze Line Project Map.....	2
Figure 3: Pop-up Event at Maplewood Mall Transit Center.....	4
Figure 4: Bronze Line Interactive Map	6

1. INTRODUCTION

Between late September and December 2025, METRO Bronze Line Bus Rapid Transit (BRT) project staff conducted engagement with the public, including residents, workers, business owners, and other stakeholders, to share information about the project, rebranding process, and answer questions. The goals and objectives of this engagement period include:

- Inform the public about the formerly known Purple Line, new METRO Bronze Line
- Share general project information to inform the public about the project
- Solicit general feedback on the project route, stations



FIGURE 1: PROJECT STAFF AND PUBLIC AT A COMMUNITY MEETING IN ST. PAUL

Project staff informed and received feedback from community groups, business representatives, municipal committees, organizations, corridor residents, municipal staff, elected officials, and other project partners.

This engagement summary report summarizes the engagement methods implemented and the feedback received.



FIGURE 2: METRO BRONZE LINE PROJECT MAP

2. ENGAGEMENT METHODS

This section outlines the approach and strategies implemented to gather input, insights, and feedback from community members, businesses, and stakeholders. Below, we provide an overview of the key elements and steps involved in our approach to engaging with the community.

2.1. Community Meetings and Events

Throughout late September–December 2025, project staff have hosted community meetings, community events to inform the public of the color rebranding and collect feedback on the general project corridor, through the following:

2.1.1 Community Events

Staff attended community events, events organized by others and open to the public, to spread awareness about the project and collect feedback. Staff engaged over 46 people through community events. The date, location, and people engaged at each event are listed below.

- Saturday, October 4 | 12–3:30 p.m. | Greater East Side (D2) Neighborhood Block Party and Annual Elections: 28 people
- Saturday, December 13 | 5–7 p.m. | Union Depot European Christmas Market: 18 people

2.1.2 Stakeholder and Committee Meetings

Staff engaged with formal municipal, community organization, and project-hosted committees during this engagement period. Presentations to community organizations are listed below. These presentations informed the public of the new Bronze Line BRT.

- Tuesday, September 23 | 6 p.m. | Payne-Phalen (D5) Community Council
- Tuesday, December 2 | Noon | Metro Transit & Ramsey Council Joint Media Event
- Thursday, October 23 | 10 a.m. | Purple People Organization
- Monday, November 17 | 6 p.m. | Dayton’s Bluff (D4) Community Council
- Wednesday, November 19 | 6:30 p.m. | Greater East Side (D2) Community Council
- Wednesday, December 10 | 1:00 p.m. | Saint Paul Indians in Action
- Wednesday, December 10 | 4:00 p.m. | Metropolitan Council Committee of the Whole
- Monday, December 15 | 4:30 p.m. | Saint Paul Planning Commission’s Transportation Committee
- Wednesday, January 7 | 12:30 p.m. | Transportation Accessibility Advisory Committee

Community and Business Advisory Committee (CBAC)

The project has convened a Community and Business Advisory Committee (CBAC) to meet throughout the project. Visit the [project website](#) to learn more about CBAC and other project committees. CBAC members met once to receive project updates throughout the engagement process. Meeting information listed below.

- Friday, December 5 | 12:30 p.m. | Presented project updates and introduced the METRO Bronze Line

Corridor Management Committee (CMC)

The Corridor Management Committee (CMC) includes elected officials and community leaders who are appointed by the Chair of the Metropolitan Council to advise the Met Council and Ramsey County on the design and construction of the Bronze Line. The CMC met once during this engagement period, listed below.

- Thursday, December 11 | 1:00–2:30 p.m. | Covered project staff recommendation for the Bronze Line BRT alignment and engagement

2.1.3 Pop-up Tabling

Staff conducted “pop-up” tabling at businesses, institutions, and other community spaces during regular hours to engage the public during their typical day. Staff engaged over 160 people through pop-ups. The date, location, and people engaged at each pop-up is below.

- Thursday, December 4 | 3-6 p.m. | Centromex Supermercado: 35 people
- Friday, December 5 | 1-4 p.m. | Maplewood Mall Transit Center: 20 people
- Friday, December 5 | 4-6 p.m. | Maplewood Mall: 40 people
- Monday, December 8 | 9 a.m.-12 p.m. | Ramsey County Service Center, Saint Paul: 29 people
- Thursday, December 11 | 3-6 p.m. | Sun World Supermarket: 15 people
- Monday, December 15 | 10 a.m.-1 p.m. | Ramsey County Service Center, Maplewood: 8 people
- Thursday, December 18 | 12-3 p.m. | Hmong Village: 13 people



FIGURE 3: POP-UP EVENT AT MAPLEWOOD MALL TRANSIT CENTER

2.1.4 Open House

Project staff hosted one virtual open house during the engagement period. The open house shared information rebranding of the Bronze Line project, schedule updates, engagement plan, and solicited feedback from residents.

- Wednesday, December 10 | 12-1:30 p.m. | Virtual Community Meeting: 19 people

2.2. Materials

A variety of resources were created to inform the public and solicit feedback, including handouts, display boards, social media, newsletter, webpage content and property owner notifications.

2.2.1 Handouts

Factsheet

Staff developed a project factsheet to introduce the new METRO Bronze Line BRT, the project's purpose and need, project schedule, project definition for Saint Paul and Maplewood, and project contact information. The factsheet was translated in Spanish, Somali, Hmong, and Karen.

Comment Form

Staff created a comment form that was used to solicit feedback and questions on the Bronze Line project and brought to community meetings and tabling events. An online version was hosted with SurveyMonkey and embed on the interactive map. Comments forms were translated into Spanish.

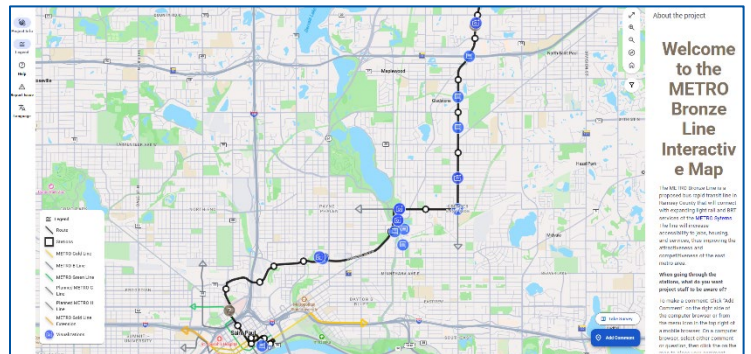
Both handouts are available in Appendix A.

2.2.2 Display Boards

Staff developed display boards to leave behind at community center buildings, libraries, and recreation centers throughout the project area (locations listed below). The boards included information on bus rapid transit characteristics in Maplewood and Saint Paul, the project's purpose and need, project schedule, project corridor map, proposed stations in Maplewood and Saint Paul. Display boards are available in Appendix B.

- Theresa Living Center
- CLUES Teen Tech Center
- Maplewood YMCA Community Center
- Ramsey County Library – Maplewood
- Mt. Airy Community Center
- Ramsey County Library – North St. Paul
- Phalen Recreation Center
- Maplewood City Hall
- Arlington Hills Community Center
- St. Paul Public Library – Dayton's Bluff

- Cochran Recovery Services
- Mt. Airy High Rise
- Roosevelt Community Center
- St. Paul East Side YMCA
- Ramsey County Service Center – Maplewood



2.2.3 Interactive Map

FIGURE 4: BRONZE LINE INTERACTIVE MAP

Staff implemented an interactive virtual map for community members to leave general feedback along the project corridor.

PublicCoordinate

Staff implemented a PublicCoordinate interactive map, an engagement tool created by Kimley-Horn. The tool allows for map-based open-ended feedback and helps log geographic specific comments.

The PublicCoordinate map shows the alignment of the Bronze Line from downtown Saint Paul through Maplewood. The map shows visualizations of the proposed Johnson Parkway bridge, Arcade Street bridge, Clarence Street station, Arlington Ave station, and County Road C station. The map overlaps with the METRO Gold Line, B Line, and Green Line and the planned METRO G Line, H Line, and Gold Line.

The public can engage with the map by selecting the type of comment they would like to make then selecting where on the map they would like to leave the comment. Staff predetermined the following types of feedback: comments and questions. The PublicCoordinate map can be translated into any language available by Google Translate. As of December 18, 2025, the map has received 18 comments.

[View the PublicCoordinate map here.](#)

2.2.4 Notices

Postcards

Staff distributed a postcard to raise awareness of the project rebranding and upcoming virtual community meeting. Approximately 29,000 postcards were mailed to homes within half a mile of the project alignment within the week of December 2. The postcard provided information about the date, location, and purpose of the community meeting. The postcard is available in Appendix C.

Social Media

Staff also advertised project activities through the Metro Transit Facebook (55,000 followers as of December 2025), Instagram (12,800 followers as of December 2025), and LinkedIn (7,000 followers as of December 2025) accounts. All three platforms posted one post in December inviting the public to community virtual meetings and pop-ups. Each post ranged between 0–35 likes, with minimal comments.

Comments on these posts ranged from concerns about costs, confusion of the new name, and the future of Route 54. Social media users discussed the potential benefits or drawbacks of Bronze Line in the comments sections (e.g., Route 64, ridership, traffic congestion in Maplewood).

Social media graphics are available in Appendix C.

Project Update Memos to Corridor Cities

Staff sent two project update memos during this engagement period to Bronze Line policymakers, stakeholders, and staff representing areas of the project corridor. Project update memos were sent in September and December. Each memo shared current project activities, community outreach and engagement, and upcoming project related public meetings and events. In the September project update memo, there was a project update status, a joint statement from Ramsey County and the Metropolitan council, and an update on engagement events project staff attended. The December memo included an update on the current project status, an update on engagement, and the Bronze Line as the revised LPA for the project, formerly known as Purple Line, as per the CMC recommendations.

Project update memos are available in Appendix D.

Newsletters

Project staff distributed one newsletter during this engagement period. In December, staff sent out a newsletter to community members that introduced the Bronze Line project and provided updates to the public. This newsletter also provided next steps for the Corridor Management Committee (CMC) recommendation to adopt the Bronze Line as the revised Locally Preferred Alternative (LPA). The newsletter shared Bronze Line updates, community events and meetings, ways to get involved, and how to stay up to date on project activities.

The newsletter is available in Appendix E.

2.2.5 Webpage Content

Staff developed a project website in 2025 to keep the community informed and updated on the status of Bronze Line. The project website includes an overview of the project, ways to stay informed, committees and project partners, design and engineering updates, and fieldwork.

Public Engagement

The goal of the Public Engagement webpage is to keep the public well-informed and engaged throughout the project. Currently the website shares information about a virtual community meeting, upcoming December pop-ups, upcoming project committees, and ways to provide feedback including the interactive feedback map.

[View the Public Engagement webpage here.](#)

2.2.7 Property Owner Notifications

In 2024, project staff notified properties that were determined to be of high priority due to potential impacts on access, parking, or other property components resulting from station location or right-of-way expansion. As the new Bronze Line is still in the early design phase and center-running lanes are no longer included in the design, project staff are sending follow-up letters in early January to the property owners who were identified last year. These letters will provide an update on the status of the new project and current potential impacts. Property letters are available in Appendix F.

3. FEEDBACK RESULTS AND THEMES

This section presents the feedback staff have received from the public through the engagement methods described above. Feedback is grouped by comments from the interactive map, community meetings, public events, and pop-ups.

3.1. District Councils and Committee Feedback

Below is a summary of comments and concerns that staff received during the district council and committee meetings.

- Business and construction mitigation
 - Concerns regarding the impacted properties along the project corridor
 - Recommendations to initiate outreach to impacted properties at an earlier stage
- Connectivity
 - Improved access to public transportation in the East Side of St. Paul
 - Micro transit transfers to and from Maplewood Mall Transit Center

3.2. Community Meetings, Events, and Pop-Ups Feedback

Below is a summary of the most common comments and concerns that staff received during community meetings, events, and pop-ups.

- Excitement about a route that would get to downtown relatively easy, as well as the connectivity to greater transport systems and surrounding region
- Potential future extension of the Bronze Line to Century College – allows more students/employees to use one bus route instead of multiple
- Safety on public transportation and within the corridor
 - Concerns of frequent use of drugs by other riders
 - Maplewood Mall's increase in crime due to nearby transit center
- Construction schedule and mitigation
- Accessibility
 - The location of the Cayuga station is not near the primary south entrance

- Suggestion to put stations near amenities, businesses, residential areas, and transit dependent communities
 - The west side of the Gateway Trail has no connection to other transit
 - No connection to St. John's Hospital nor Century College
- Traffic and neighborhood impact
 - Traffic concerns along White Bear Avenue
 - Johnson Parkway bridge crossing concerns – one lane instead of two to reduce traffic
- Concerns of current and future traffic conditions along White Bear and Maryland avenues

3.3. Interactive Map

- Traffic management
 - Adding bus lanes north of Larpenteur Avenue to ensure reliable transit services
 - Reconsidering dedicated bus lanes around Hwy 36 to prevent vehicle gridlock
- Connectivity
 - Potential extension route to St. John's hospital and Century College
 - Recommendations add a closer bus stop to the Green Line
 - Recommendations to extend the project to the Minneapolis and St. Paul Airport and Mall of America via Shepard Road
 - A need for a bus connection from Downtown St. Paul to the airport
- Funding
 - Concerns about rising property taxes
 - Concerns that the project will only benefit Maplewood

4. KEY TAKEAWAYS

This section summarizes the overall themes of feedback received from these engagement methods during December 2025.

Safety on public transportation and within the corridor

- Many stories of unsafe conditions and crime on bus/light rail
- Increased crime near transit centers, particularly around the Maplewood Mall area

Awareness and Information Needs

- Questions about the project's rebranding and expected construction timeline

Accessibility

- Easier access to Downtown St. Paul and enhanced connectivity to greater transport systems and surrounding region
- Accessible stations near urban amenities, businesses, dense residential areas, schools, and transit dependent communities
- Interest in potential future extension of the Bronze Line to Century College, providing fewer transfers for students and employees
- Concerns about station locations not being close enough to key destinations e.g., Health Partners Rehabilitation St. Paul Neuroscience Center



APPENDIX A. PROJECT HANDOUTS

Project Overview

The METRO Bronze Line is a planned bus rapid transit line that will provide faster and more reliable transit service to the cities of Saint Paul and Maplewood and will connect with existing and future light rail and bus rapid transit services of the METRO system, including direct connections to the Green Line, Gold Line, B Line, G Line, and H Line, as well as local and express bus routes. The line will run from Union Depot in downtown Saint Paul to Maplewood Mall Transit Center, generally along Robert Street and Phalen Boulevard south of Maryland Avenue. The line will replace Route 54 along White Bear Avenue and a portion of Maryland Avenue with enhanced service and facilities. The line will increase accessibility to jobs, housing, and services, improving the appeal and competitiveness of the east metro area.



Project Schedule

The Corridor Management Committee (CMC) is anticipated to make a recommendation to advance the project during its Dec. 11 meeting. Afterward, the Metropolitan Council would seek resolutions of support from Ramsey County and the cities of Maplewood and Saint Paul.

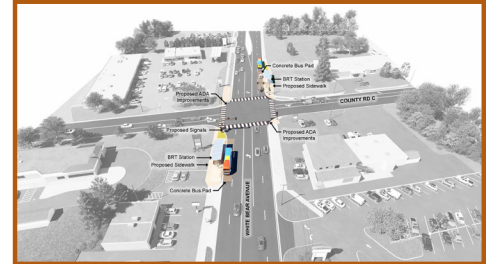
The schedule for the project's design, construction, and opening is under development. More information about the project schedule will be shared once available. Construction is not anticipated before 2028.

2025				2026	
September	October	November	December	January	February
Public Outreach				Resolutions of Support	
County Workshop		CMC Action			

Coordination with project partners has led to the following new project definition:

In Maplewood, the project includes:

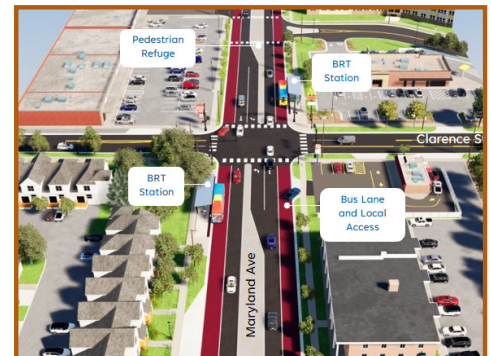
- An improved end-of-the-line station at the Maplewood Mall Transit Center
- Comfortable shelters with a variety of amenities including lighting and landscaping enhancements
- Traffic signal transit priority modifications
- Limited right-of-way acquisition to accommodate station platforms
- Improvements at station intersections, such as:
 - » Pedestrian ramps and signals
 - » Potential replacement of older traffic lights.
- Buses will operate in general purpose lanes north of Larpenteur Avenue



*White Bear Avenue and
County Road C in Maplewood*

In Saint Paul, the project includes:

- A new BRT and multi-use trail bridge over Johnson Parkway (between Cook Station and Maryland Avenue)
- Comfortable shelters with a variety of amenities including lighting and landscaping enhancements
- Buses will operate in bus lanes along the route, including side-running bus lanes on Maryland and White Bear avenues south of Larpenteur Avenue. The bus lanes will allow general traffic to make right-turns onto local streets and driveways
- Additional improvements include:
 - » Dedicated left-turn lanes and new medians
 - » Pedestrian ramps and signals
- Traffic signal transit priority modifications
- Right of way acquisition to accommodate roadway reconstruction and station platforms



*Maryland Avenue and
Clarence Street in Saint Paul*

Stay Connected



Sign up for email updates:
metrotransit.org/bronze-line-project



Email us:
BronzeLine@metrotransit.org



Call us:
651-602-1955

Follow us:
[@MetroTransitMN](https://twitter.com/MetroTransitMN)



If you need this information in an alternative format or language, contact:

Si necesita esta información en un formato o idioma alternativo, póngase en contacto con:

Yog koj xav tau cov lus no txhais uas lus hmoob lossis xav tau ib tus neeg pab txhais cov lus no rau koj, tiv tauj:

Haddii aad dooneyso in aad macluumaadkan ku hesho siyaabo kale ama afaf kale, la xiriir

နမ့်လိာ်ဘာ်တၢ်ဂ့ၢ်တၢ်ကျိၤအံၤလၢ ကျိၤကျဲၤအၢၤ မ့တမ့ၢ် ကျိၢ်အၢၤန့ၢ်, ဆဲးကျၢ

ပရိုဂျက်အဖွဲ့အစည်း

METRO Bronze Line မှာလွှဲသိလွှဲသား(စ)အ ကျိုး လာတတ်ကျိုးသားလား ကပ်စက်တီဆာပုဆွဲ Saint Paul ခီး Maplewood ဝှံတဖန်ခီး ဆေးကျိုး ဝဲ ဝှံပုလွန်မုန်အခီးသိလွှဲသား(စ) လာအိတ်ဟ် စၢခီး ကအိတ်ထီၣ်လၢခါဆူညါ ဘၣ်ထွဲခီး METRO system, ပုၣ်ဃုာ်ခီးတၢ်ဆေးကျိုးလိလၢဆူ Green Line, Gold Line, B Line, G Line, ခီး H Line, ဃုာ်ခီးလိကဝီပုၣ်ခီး ကျဲမုၢ်ဖးဒိၣ်သိလွှဲသား(စ) အကျဲတဖန်န့ၣ်လီၤ. သိလွှဲသား(စ)အကျဲ ကလဲၤတၢ် ကွၢ်တၢ်လၢ Union Depot လၢ Saint Paul ဝှံပုၣ် ဆူ Maplewood Mall Transit Center, အါတ ကွၢ်လၢ Robert Street ခီး Phalen Boulevard ဖဲ Maryland Avenue အကလံးတကပၤခီး လၢ White Bear Avenue ဖဲ Maryland Avenue ကလံးတကပၤန့ၣ်လီၤ. သိလွှဲသား(စ)အကျဲ က န့ၣ်လီၤလၢ Route 54 အလီၤဃုာ်ခီး White Bear Avenue ခီး Maryland Avenue တကွၢ်ခီး ကအိတ် ခီးတၢ်တီၤမၤစၢခီး တၢ်ပိးတၢ်လိၤဂၤထီၣ်အါထီၣ် န့ၣ်လီၤ. သိလွှဲသား(စ)အကျဲ ကမၤအါထီၣ်တၢ်ဖဲတၢ်မၤ ခဲယာ်, ဟံၣ်တၢ်သ့ၣ်ထီၣ်, ခီးတၢ်တီၤမၤစၢတဖန်, ခီးမၤဂၤဒိၣ်ထီၣ် မၤထီၣ်ခွၢ်လိကဝီ အတၢ်ထုးန့ၣ်ပုၣ် သးခီး တၢ်ပၤလၢသး ဒိၣ်ထီၣ်အါထီၣ်န့ၣ်လီၤ.



ပရိုဂျက်အတၢ်ဆၢကတိၢ်ရဲၣ်ကျဲၤ

တၢ်မုၢ်လၢဝဲလၢ The Corridor Management Committee (CMC) ကဟ့ၣ်ကုၣ်ဟ့ၣ်ဖးတၢ် ဒ်သီးပရိုဂျက်ကလဲၤဆူညါလၢ အ တၢ်အိတ်ဖျိထံၣ်လိာ်သးဖဲ လိဒ်စံဘၣ် 11 သိန့ၣ်လီၤ. CMC တၢ်ဟ့ၣ်ကုၣ်ဟ့ၣ်ဖးဝဲအလီၤခဲန့ၣ် Metropolitan Council အ ဃုာ်တၢ်ဆိၣ်ထွဲတၢ်မၤစၢလၢ Ramsey County ခီး Maplewood ခီး Saint Paul ဝှံတဖန်အအိတ်န့ၣ်လီၤ.

ကတိၢ်ခဲအံၤန့ၣ် တၢ်ဒုးအိတ်ထီၣ်တၢ်ဆၢကတိၢ်ရဲၣ်ကျဲၤလၢ တၢ်တုးထီၣ်အကွၢ်အဂီၢ်, တၢ်သ့ၣ်ထီၣ်ဘၣ်ထီၣ်တၢ်, ခီးတၢ်အိတ်ပရို ဂျက်အသိ အဖၢမုၢ်န့ၣ်လီၤ. ဖဲပဒီးန့ၣ်ဘၣ် တၢ်ဂံၢ်အဂၤအဂၤဘၣ်သး ကတိၢ်ယံၤတၢ်ဆၢကတိၢ်ရဲၣ်ကျဲၤတဘျီဃီန့ၣ် ပကရၢလီၤအါ န့ၣ်လီၤ. ကတိၢ်ခဲအံၤန့ၣ် တၢ်တမုၢ်လၢဝဲလၢ တၢ်ကသ့ၣ်ထီၣ်ဘၣ်ထီၣ်တၢ် တချးလၢ 2028 ဘၣ်န့ၣ်လီၤ.

2025				2026	
လိစဲးပတုဘၣ်	လိအိးကထိဘၣ်	လိနီၣ်ဝှံဘၣ်	လိဒ်စံဘၣ်	လိယနုၤအါရံၤ	လိဖျိဘျီအါရံၤ

တၢ်ဆေးကျိုးတုၤအိတ်ကမျါၢ်

တၢ်ဆိၣ်ထွဲတၢ် မၤစၢ

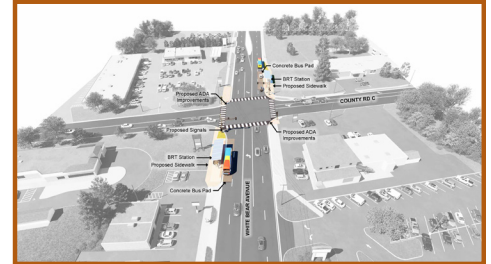
ခီးထီၣ်တၢ်ထံၣ်လိာ်က တၢ်သးကိးတၢ်

CMC တၢ် ဟံးဂီၢ်ဝီ

တၢ်ဒုးဘၣ်လိာ်ဖိဒုးလၢ ပရိကွဲးအပူၤမၤသကိးတၢ်တဖၣ်အသိ တၢ်အခိပညီအံၤဟံးအိၣ်ထီၣ်န့ၣ်လီၤ-

လၢ Maplewood န့ၣ် ပရိကွဲးအပူၤပၣ်ဃုာ်ဒီး-

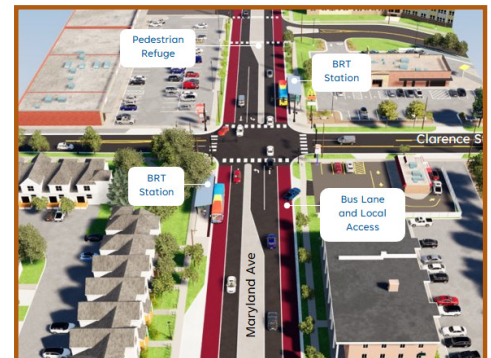
- လွၣ်ကျဲအကတၢၢ် သိလွၣ်သန့ၤလီၤလၢ တၢ်ဘျီဂ့ၤဒိၣ်သထီၣ်လၢ Maplewood Mall Transit Center
- တၢ်အိၣ်ဘျီလီၤမၤပၤတဖၣ် လၢအိၣ်ဒီးတၢ်ဖျါပံၤဖျါလၢအကလုာ်ကလုာ် ပၣ်ဃုာ်ဒီး တၢ်ကပိၤဒီး တၢ်မၤဂ့ၤထီၣ်ဟီၣ်ခိၣ်ကွၢ်ဂီၤတဖၣ်
- တၢ်ဘျီက့ၤသိလွၣ်မ့ၢ်ဖိးတဖၣ်လၢ အဟံၣ်ဆိသိလွၣ်ဘၢး(စ)ကျဲ
- တၢ်ဟံးန့ၢ်ဟီၣ်ခိၣ်လီၤတစဲးလၢ ကသုၣ်ထီၣ် သိလွၣ်သန့ၤလီၤပလဲးဖိ(မ)တဖၣ်အဂီၢ်
- တၢ်မၤဂ့ၤဒိၣ်ထီၣ်တဖၣ်လၢ သိလွၣ်သန့ၤလီၤကျဲကတံၢ်တဖၣ်, ဒ်အမ့ၢ်
 - » ၁ဟးလၢခိၣ်အဂီၢ် ဃီသွါဒီးတၢ်ပနီၣ်တဖၣ်
 - » ခွဲးယာ်လၢကလဲလိာ် သိလွၣ်ကျဲမ့ၢ်ဖိးအလီၤလံၤတဖၣ်န့ၣ်လီၤ.
- သိလွၣ်ဘၢး(စ)တဖၣ်ကလဲလၢ ထီၣ်တၢ်ပညီၣ်ကျဲတဖၣ်လၢ Larpen-teur Avenue ကလံၤစိးတခါန့ၣ်လီၤ



White Bear Avenue ဒီး County Road C
လၢ Maplewood

လၢ Saint Paul န့ၣ် ပရိကွဲးအပူၤပၣ်ဃုာ်ဒီး-

- ပရိကွဲးအကွၢ်အဂီၢ်အပူၤ ပၣ်ဃုာ်ဒီး BRT ဒီးတၢ်ကျဲဖိးဆံးလၢ တၢ်စူးကါအီၤလၢတၢ်ပညီၣ်အကလုာ်ကလုာ်သ့ၤလၢ Johnson Parkway အဖီခိၣ် (လၢ Cook Station ဒီး Maryland Avenue အဘၢၣ်စၢၤ)
- တၢ်အိၣ်ဘျီလီၤမၤပၤတဖၣ် လၢအိၣ်ဒီးတၢ်ဖျါပံၤဖျါလၢအကလုာ်ကလုာ် ပၣ်ဃုာ်ဒီး တၢ်ကပိၤဒီး တၢ်မၤဂ့ၤထီၣ်ဟီၣ်ခိၣ်ကွၢ်ဂီၤတဖၣ်
- သိလွၣ်ပဒၢးတဖၣ် ကလဲၤတၢ်လၢ သိလွၣ်ဘၢး(စ)ကျဲလၢကျဲမ့ၢ်ကပၤတဖၣ်လၢ Maryland ဒီး White Bear ကျဲဖးလံၤတဖၣ်လၢ Larpen-teur Avenue ကလံၤထံးတကပၤလၢ အပျဲသိလွၣ်ထီၣ်တဖၣ် ဃာ်န့ၢ်လီၤလၢအထွဲတခါ ဆူလီၤကဝီၤကျဲ မ့တမ့ၢ် သိလွၣ်ကျဲတဖၣ်န့ၣ်လီၤ
- တၢ်မၤဂ့ၤဒိၣ်ထီၣ်အဂၢၤတဖၣ်လၢ Saint Paul အပူၤ ပၣ်ဃုာ်ဒီး-
 - » ကျဲလၢဃာ်ဆူအစုာ်တကပၤ ဒီးကျဲခၢၣ်သးတၢ်တီၢ်အသိတဖၣ်
 - » ပုၤဟးလၢခိၣ်အဂီၢ် ဃီသွါဒီးတၢ်ပနီၣ်တဖၣ်
- တၢ်ဘျီက့ၤသိလွၣ်မ့ၢ်ဖိးတဖၣ်လၢ အဟံၣ်ဆိသိလွၣ်ဘၢး(စ)ကျဲ
- တၢ်ဟံးန့ၢ်ဟီၣ်ခိၣ်လီၤ ဒ်သိးကသုၣ်ထီၣ်ဘျီထီၣ်ကျဲဒီး သိလွၣ်သန့ၤလီၤပလဲးဖိ(မ)တဖၣ်အဂီၢ်



Maryland Avenue ဒီး Clarence Street
လၢ Saint Paul

ဆဲးကျိးဒီးပုၤတက့ၢ်

နမ့ၢ်သးစဲးလၢ Bronze Line အပူၤမၤတၢ်ဖိတဖၣ် ကဟံးဆူနီၣ်ဃၢၤကရူၢ်, ပုၤတဝါကရၢ, မုၢ်ဝဲၤတၢ်မၤ, မ့တမ့ၢ် မူးတၢ်ရဲၣ်တၢ်ကျဲန့ၣ် ဝံသးစူၤဆဲးကျိးဘၣ်ပုၤတက့ၢ်.



ဆဲးလီၤမၤလၢ ကနီၢ်ဘၣ်အံၤမ့(လ)တၢ်ကစီၣ်သိတဖၣ်အဂီၢ်-
metrotransit.org/bronze-line-project



ဆုၢ်အံၤမ့(လ)ဆူပအိၣ်-
BronzeLine@metrotransit.org



ကိးပုၤလၢလီၤတဲစိ-
651-602-1955



ဟံးန့ၢ်တၢ်ကစီၣ်သိလၢပအိၣ်-
[@MetroTransitMN](https://www.instagram.com/MetroTransitMN)

နမ့ၢ်လိာ်ဘၣ်တၢ်ဂ့ၢ်တၢ်ကျိၤအံၤ လၢအကွၢ်အဂီၢ်အဂၢၤတမံၤ မ့တမ့ၢ် ကျိၣ်အဂၢၤတကျိၣ်န့ၣ် ဆဲးကျိးဆူ-

Si necesita esta información en un formato o idioma alternativo, póngase en contacto con:

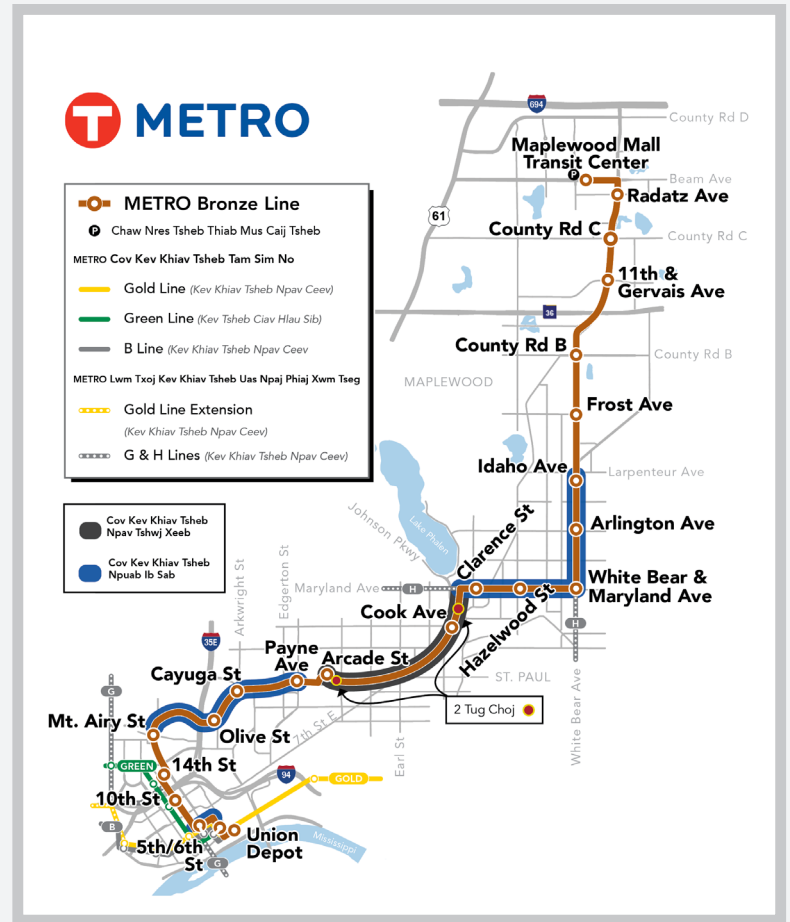
Yog koj xav tau cov lus no txhais uas lus hmoob lossis xav tau ib tus neeg pab txhais cov lus no rau koj, tiv tauj:

Haddii aad dooneyso in aad macluumaadkan ku hesho siyaabo kale ama afaf kale, la xiriir

နမ့ၢ်လိာ်ဘၣ်တၢ်ဂ့ၢ်တၢ်ကျိၤအံၤလၢ ကျိၤကျဲအဂၢၤ မ့တမ့ၢ် ကျိၣ်အဂၢၤန့ၣ်, ဆဲးကျိး

Cov lus zuaj qhia txog lub khoos kas

Txoj Kev METRO Xim Tooj Dag yog ib txoj kev khiav tsheb npav ceev uas tau npaj tseg uas yuav muab kev pab cuam thauj mus los ceev dua qub tuaj thiab ntseeg siab tau dua qub tuaj rau cov nroog hauv Saint Paul thiab Maplewood thiab yuav txuas mus rau cov kev khiav tsheb ciav hlau thiab tsheb npav ceev uas twb yeej muaj lawm thiab yav tom ntej ntawm METRO lub laj txheej khiav tsheb, suav nrog kev sib txuas ncaj qha mus rau Txoj Kev Xim Ntsuab, Txoj Kev Xim Kub, Txoj Kev B, Txoj Kev G, thiab Txoj Kev H, suav nrog rau cov kev khiav tsheb npav hauv cheeb tsam thiab cov kev khiav tsheb npav ceev. Txoj kev no yuav khiav los ntawm Union Depot hauv plawv nroog Saint Paul mus rau Maplewood Mall Transit Center, feem ntau yog khiav raws Robert Street thiab Phalen Boulevard sab qab teb ntawm Maryland Avenue thiab raws White Bear Avenue sab qaum teb ntawm Maryland Avenue. Txoj kev no yuav hloov Txoj Kev 54 uas khiav raws White Bear Avenue thiab ib feem ntawm Maryland Avenue nrog cov kev pab cuam thiab cov chaw uas txhim kho kom zoo dua qub tuaj. Txoj kev no yuav ua rau tuaj yeem nkag mus rau cov hauj lwm, vaj tse nyob, thiab cov kev pab cuam ntau dua qub tuaj, txhim kho qhov zoo nkauj thiab kev sib tw ntawm cheeb tsam nroog sab hnub tuaj.



Lub Sij Hawm ntawm Lub Khoos Kas

Pawg Tub Coj Xwm Tuav Tswj Txoj Kev Taug Mus Los (CMC) yuav muab lus qhia txog kev ua lub khoos kas nyob rau lub rooj sib tham thaum Lub Kaum Ob Hlis Tim 11. Kev ua raws li CMC cov lus qhia, Metropolitan Council yuav nrhiav cov lus pom zoo txhawb nqa los ntawm Nroog Ramsey thiab cov nroog hauv Maplewood thiab Saint Paul.

Tam sim no tab tom tsim daim phiaj teev sij hawm rau kev tawm qauv, kev ua, thiab kev qhib lub khoos kas tshiab. Cov ntaub ntawv qhia paub ntau ntiv txog lub sij hawm ntev dua yog mam li muab nthuav tawm qom qab thaum npaj txhij lawm. Tam sim no khwv yees tias yuav tsis pib ua ua ntej xyoo 2028.

2025				2026	
Lu Cuaj Hlis	Lub Kaum Hli	Lub Kaum Ib Hlis	Lub Kaum Ob Hlis	Lub Ib Hlis	Lub Ob Hlis

Kev Nthuav Tawm rau Zej Tsoom

Lus Pom Zoo Txhawb Nqa

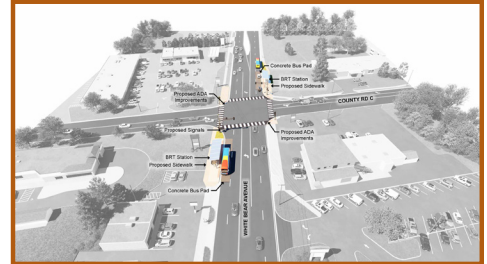
Lub Roj
Cob Qhia
hauv Lub
Nroog

CMC Qhov
Kev Nqis
Tes Ua

Kev dhia dej num nrog cov khub koom tes rau lub khoos kas tau ua rau muaj cov lus txhais ntsiab lus hauv qab no:

Hauv Maplewood, lub khoos kas suav nrog:

- Kev kho cov chaw nres tsheb mus kawg nkaus txoj kev ntawm Maplewood Mall Transit Center
- Cov chaw nyob uas zoo xis nyob nrog ntau yam khoom siv ua kev yooj yim suav nrog kev kho cov teeb pom kev thiab cov vaj cog xyooob ntoo zoo nkauj
- Kev hloov kho qhov tseem ceeb txog ntawm cov teeb qhia kev khiav tsheb
- Kev thov siv cov av npaub sab ntug kev los ua cov chaw nres tsheb
- Kev txhim kho cov chaw nres tsheb kev sib tshuam, xws li:
 - » Cov ntaiv nplee thiab cov teeb qhia rau cov neeg taug ko taw
 - » Tej kev hloov pauv cov teeb liab qub uas tej zaum yuav hloov.



White Bear Avenue thiab County Road C hauv Maplewood

Hauv Saint Paul, lub khoos kas suav nrog:

- Tus qauv uas tawm rau lub khoos kas no suav nrog txoj kev BRT tshiab thiab cov choj siv tau ntau yam uas hla Johnson Parkway (nruab nrab ntawm Cook Station thiab Maryland Avenue).
- Cov chaw nyob uas zoo xis nyob nrog ntau yam khoom siv ua kev yooj yim suav nrog kev kho cov teeb pom kev thiab cov vaj cog xyooob ntoo zoo nkauj
- Cov tsheb npav yuav khiav hauv cov kab khiav tsheb npav ntawm ib sab ntawm txoj kev Maryland thiab White Bear sab qab teb ntawm Larpenteur Avenue uas yuav ua rau cov tsheb khiav nthuav dav tuaj yeem lem mus rau sab xis tau ntawm cov kev hauv zos los sis mus rau hauv txoj kev ncaim nkag mus rau vaj tse tau.
- Tej kev txhim kho ntau ntxiv hauv Saint Paul suav nrog:
 - » Txoj kab khiav tsheb tshwj xeeb rau kev lem rau sab laug thiab cov kab plawv kev tshiab
 - » Cov ntaiv nplee thiab cov teeb qhia rau cov neeg taug ko taw
- Kev hloov kho qhov tseem ceeb txog ntawm cov teeb qhia kev khiav tsheb
- Kev thov yuav cov qav ntawm ob sab ntug kev los ua txoj kev khiav tsheb thiab cov chaw nres tsheb



Maryland Avenue thiab Clarence Street hauv Saint Paul

Soj Qab Ntsoov Saib

Yog tias koj xav kom cov neeg ua hauj lwm rau Txoj Kev Xim Tooj Dag tuaj mus rau koj pawg neeg zej zog, lub koom haum, lub chaw lag luam, los sis lub koom txoos hauv zej zog, ces thov tiv tauj rau peb.



Teev npe txais xov xwm tshiab hauv email: metrotransit.org/bronze-line-project



Xa email rau pe: BronzeLine@metrotransit.org



Hu rau peb: 651-602-1955

Soj qab saib peb: @MetroTransitMN



If you need this information in an alternative format or language, contact:

Si necesita esta información en un formato o idioma alternativo, póngase en contacto con:

Yog koj xav tau cov lus no txhais uas lus hmoob lossis xav tau ib tus neeg pab txhais cov lus no rau koj, tiv tauj:

Haddii aad dooneyso in aad macluumaadkan ku hesho siyaabo kale ama afaf kale, la xiriir

နမူနာလုပ်ကိုင်အားလုံးကို အကူအညီအတွက် မှတ်တမ်း ထုတ်ပြန်ရန်, ဆေးကျာ

Dulmarka Mashruuca

Khadka METRO Bronze Line waa wado gaadiidka basaska degdegga ah oo qorshaysan oo adeeg gaadiid oo degdeg ah lana isku hallayn karo siin doonta magaalooyinka Saint Paul iyo Maplewood waxayna isku xiri doontaa adeegyada hadda jira iyo kuwa mustaqbalka ee tareenka fudud iyo gaadiidka baska degdegga ah ee nidaamka METRO, oo ay ku jiraan isku xirada tooska ah ee Green Line, Gold Line, B Line, G Line, iyo H Line, iyo sidoo kale wadooyinka basaska ee maxalliga ah iyo kuwa degdegga ah. Wadadan waxay ka bilaaban doontaa Union Depot ee magaalada hoose ee Saint Paul ilaa Maplewood Mall Transit Center, guud ahaan ku teedsan Robert Street iyo Phalen Boulevard koonfurta Maryland Avenue iyo dhinaca White Bear Avenue waqooyiga Maryland Avenue. Wadada waxay beddeli doontaa Jidka 54 ee ku teedsan White Bear Avenue iyo qayb ka mid ah Maryland Avenue oo leh adeeg iyo tas-hiilaad la xoojiyay. Wadada waxay sare u qaadi doontaa marin-uhelka shaqooyinka, guriyaynta, iyo adeegyada, taasoo kor u qaadaysa soo jiidashada iyo tartamidda aagga bari ee magaalada.



Jadwalka Mashruuca

Guddiga Maamulka Dariiqa (CMC) waxaa la filayaa inay soo jeediyaan talo lagu sii wadayo mashruuca inta lagu jiro kulankooda Diseembar 11. Talo soo jeedinta CMC kadib, Golaha Magaalada waxay qaraar taageero ka raadsan doonaan Ramsey County iyo magaalooyinka Maplewood iyo Saint Paul.

Jadwal guud oo ku aadan nakhshadaynta, dhisidda, iyo furitaanka mashruuca cusub ayaa hadda lagu guda jiraa. Xog dheeraad ah oo ku saabsan jadwalka muddada-dheer ayaa la bixin doonaa marki la helo. Dhismaha hadda lama filayo kahor sanadka 2028.

2025				2026	
Sibteembar	Oktoobar	Nofeembar	Diseembar	Janaayo	Febraayo

Wacyigelinta Dadweynaha

Qaraarada Taageerada

Aqoon-
iswaydaarsiga
Degmada

Waxqabadka
CMC

Isku dubaridka la-hawlgalayaasha mashruuca ayaa keentay qeexidda soo socota:

Gudaha Maplewood, mashruuca waxaa ka mid ah:

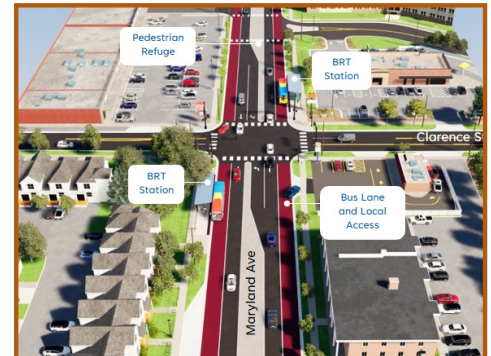
- Hagaajinta boosteejada dhammaadka wadada ee Maplewood Mall Transit Center
- Meelo kor ka dadadan oo uu rakaabku ku sugo oo istareex ah oo leh tas-hiilaad kala duwan oo ay ku jiraan iftiiminta iyo kor u qaadista bilicda
- Wax ka beddelada mudnaanta calaamada taraafikada gaadiidka
- Hanashada dhulka dariiqa oo kooban si boos loo siiyo aagaga boosteejada
- Hagaajinada isgoysyada boosteejada, sida:
 - » Taagaga dadka lugaynaya iyo calaamadaha
 - » Beddelidda suurtagalka ah ee nalalka taraafiga ee gaboobay
- Basaska waxay adeegsan doonaan seedadka ujeedooyinka guud ee waqooyiga Larpenteur Avenue



White Bear Avenue iyo County Road C ee Maplewood

Gudaha Saint Paul, mashruuca waxaa ka mid ah:

- Nakhshadda mashruuca waxaa ka mid ah BRT cusub iyo dhabbo buundo oo waxyaabo badan loo isticmaalo oo la dul saaro Johnson Parkway (inta u dhaxayso Cook Station iyo Maryland Avenue)
- Meelo kor ka dadadan oo uu rakaabku ku sugo oo istareex ah oo leh tas-hiilaad kala duwan oo ay ku jiraan iftiiminta iyo kor u qaadista bilicda
- Basaska waxay mari doonaan seedadka geesaha ah ee wadooyinka Maryland iyo White Bear ee koonfurta Larpenteur Avenue taasoo u oggolaanayso gaadiidka guud inay midig ugu leexdaan wadooyinka ama dariiqyada maxalliga ah
- Horumarinada kale ee Saint Paul waxaa ka mid ah:
 - » Seedad u gaar ah baabuurta bidix u leexanayso iyo meelo u dhexeeyo wadooyinka oo cusub
 - » Taagaga dadka lugaynaya iyo calaamadaha
- Wax ka beddelada mudnaanta calaamada taraafikada gaadiidka
- Hanashada dhulka dariiqa si ay boos u siiso dib-u-dhiska wadada iyo goobaha boosteejada



Maryland Avenue iyo Clarence Street ee Saint Paul

Ku Xirnow

Haddii aad danaynayso in shaqaalaha Bronze Line ay yimaadaan kooxdaada xaafada, ururka bulshada, mehrada, ama dhacdada, fadlan la xirii.



Isqor si aad warbixinada iimayl ugu hesho:
metrotransit.org/bronze-line-project



Iimayl noo soo dir:
BronzeLine@metrotransit.org



Na soo wac:
651-602-1955

Na soo follow-garee: @
MetroTransitMN



If you need this information in an alternative format or language, contact:

Si necesita esta información en un formato o idioma alternativo, póngase en contacto con:

Yog koj xav tau cov lus no txhais uas lus hmoob lossis xav tau ib tus neeg pab txhais cov lus no rau koj, tiv tauj:

Haddii aad dooneyso in aad macluumaadkan ku hesho siyaabo kale ama afaf kale, la xirii

နမူနာလုပ်ငန်းတိုင်းကိစ္စအား ကျွန်ုပ်တို့အား မှတ်ပေးပါက ကျွန်ုပ်တို့အား ချီးမွမ်းပါမည်။

Descripción general del proyecto

La Línea METRO Bronze es una línea planificada de autobuses de tránsito rápido (BRT) que ofrecerá un servicio de transporte más rápido y confiable a las ciudades de Saint Paul y Maplewood, y se conectará con los servicios actuales y futuros de tren ligero y de tránsito rápido de autobuses del sistema METRO, incluidos los enlaces directos con las líneas Green, Gold, B, G y H, así como con rutas locales y expresas de autobuses. La línea recorrerá desde Union Depot, en el centro de Saint Paul, hasta el Centro de Tránsito de Maplewood Mall, siguiendo principalmente las calles Robert Street y Phalen Boulevard al sur de Maryland Avenue, y White Bear Avenue al norte de Maryland Avenue. La línea reemplazará la Ruta 54 a lo largo de White Bear Avenue y una parte de Maryland Avenue, ofreciendo un servicio y unas instalaciones mejoradas. El proyecto aumentará el acceso a empleos, viviendas y servicios, mejorando la conectividad, el atractivo y la competitividad del área metropolitana oriental.



Cronograma del proyecto

Se prevé que el Comité de Gestión del Corredor (CMC) emita una recomendación para avanzar con el proyecto durante su reunión del 11 de diciembre. Tras las recomendaciones del CMC, el Consejo Metropolitano buscará resoluciones de apoyo de parte del condado de Ramsey y de las ciudades de Maplewood y Saint Paul.

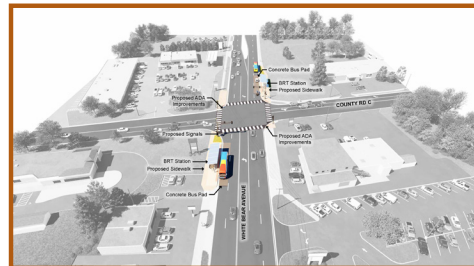
Actualmente se está desarrollando un cronograma general para el diseño, la construcción y la apertura del nuevo proyecto. Se compartirá más información sobre el calendario a largo plazo una vez que esté disponible. No se prevé el inicio de la construcción antes de 2028.

2025				2026	
Septiembre	Octubre	Noviembre	Diciembre	Enero	Febrero
Alcanze Público				Resoluciones de Apoyo	
Taller del Condado		Acción del CMC			

La coordinación con los socios del proyecto derivó en las siguientes definiciones:

En Maplewood, el proyecto incluye:

- Una estación mejorada de final de línea en el Centro de Tránsito de Maplewood Mall.
- Refugios cómodos con una variedad de servicios, incluyendo mejoras en iluminación y paisajismo.
- Modificaciones en los semáforos para dar prioridad al tránsito de autobuses.
- Adquisición limitada de derechos de vía para acomodar las plataformas de las estaciones.
- Mejoras en las intersecciones de las estaciones, tales como:
 - » Rampas y señales peatonales.
 - » Posible reemplazo de semáforos antiguos.



White Bear Avenue y
County Road C en Maplewood

En Saint Paul, el proyecto incluye:

- El diseño contempla un nuevo puente para BRT y sendero de uso múltiple sobre Johnson Parkway (entre Cook Station y Maryland Avenue).
- Refugios cómodos con una variedad de servicios, incluyendo mejoras en iluminación y paisajismo.
- Los autobuses operarán en carriles exclusivos laterales sobre Maryland Avenue y White Bear Avenue, al sur de Larpenteur Avenue, que permiten que el tráfico general realice giros a la derecha hacia calles locales o entradas de vehículos.
- Otras mejoras en Saint Paul incluyen:
 - » Carriles exclusivos para giros a la izquierda y nuevos separadores centrales.
 - » Rampas y señales peatonales.
- Modificaciones de prioridad en semáforos para el tránsito de autobuses.
- Adquisición de derechos de vía para permitir la reconstrucción de la calzada y la instalación de plataformas de estaciones.



Maryland Avenue y
Clarence Street en San Pablo

Manténgase conectado

Si desea que el personal de la Línea Bronze visite su grupo vecinal, organización comunitaria, empresa o evento, comuníquese con nosotros.



Suscríbase para recibir actualizaciones por correo electrónico:
metrotransit.org/bronze-line-project



Envíenos un correo electrónico:
BronzeLine@metrotransit.org



Llámenos:
651-602-1955

Síguenos en redes sociales:
[@MetroTransitMN](https://twitter.com/MetroTransitMN)



If you need this information in an alternative format or language, contact:

Si necesita esta información en un formato o idioma alternativo, póngase en contacto con:

Yog koj xav tau cov lus no txhais uas lus hmoob lossis xav tau ib tus neeg pab txhais cov lus no rau koj, tiv tauj:

Haddii aad dooneyso in aad macluumaadkan ku hesho siyaabo kale ama afaf kale, la xiriir

နမူနာလုပ်ငန်းတိုင်းကိုအသုံးပြုသော ကျွန်ုပ်တို့၏ မူတမ်းကို အသုံးပြုနိုင်ရန် ဆုံးဖြတ်ပါ။

COMMENT CARD



NAME: _____ PHONE: _____

E-MAIL: _____ ☐ Check the box if you would like to be contacted

COMMENTS/QUESTIONS:

Please leave this card in the comment box. Your feedback will be shared with project staff and included in the project record. Comments and questions may also be directed to BronzeLine@metrotransit.org

COMMENT CARD



NAME: _____ PHONE: _____

E-MAIL: _____ ☐ Check the box if you would like to be contacted

COMMENTS/QUESTIONS:

Please leave this card in the comment box. Your feedback will be shared with project staff and included in the project record. Comments and questions may also be directed to BronzeLine@metrotransit.org

COMMENT CARD



NAME: _____ PHONE: _____

E-MAIL: _____ ☐ Check the box if you would like to be contacted

COMMENTS/QUESTIONS:

Please leave this card in the comment box. Your feedback will be shared with project staff and included in the project record. Comments and questions may also be directed to BronzeLine@metrotransit.org

COMMENT CARD



NAME: _____ PHONE: _____

E-MAIL: _____ ☐ Check the box if you would like to be contacted

COMMENTS/QUESTIONS:

Please leave this card in the comment box. Your feedback will be shared with project staff and included in the project record. Comments and questions may also be directed to BronzeLine@metrotransit.org

Tarjeta de Comentarios



Nombre: _____ Teléfono: _____

Correo electrónico: _____ ☐ Marque esta casilla si desea ser contactado

Comentarios/Preguntas:

Por favor, deje esta tarjeta en la caja de comentarios. Sus comentarios serán compartidos con el personal del proyecto e incluidos en el registro oficial. También puede enviar sus comentarios y preguntas a: BronzeLine@metrotransit.org

Tarjeta de Comentarios



Nombre: _____ Teléfono: _____

Correo electrónico: _____ ☐ Marque esta casilla si desea ser contactado

Comentarios/Preguntas:

Por favor, deje esta tarjeta en la caja de comentarios. Sus comentarios serán compartidos con el personal del proyecto e incluidos en el registro oficial. También puede enviar sus comentarios y preguntas a: BronzeLine@metrotransit.org

Tarjeta de Comentarios



Nombre: _____ Teléfono: _____

Correo electrónico: _____ ☐ Marque esta casilla si desea ser contactado

Comentarios/Preguntas:

Por favor, deje esta tarjeta en la caja de comentarios. Sus comentarios serán compartidos con el personal del proyecto e incluidos en el registro oficial. También puede enviar sus comentarios y preguntas a: BronzeLine@metrotransit.org

Tarjeta de Comentarios



Nombre: _____ Teléfono: _____

Correo electrónico: _____ ☐ Marque esta casilla si desea ser contactado

Comentarios/Preguntas:

Por favor, deje esta tarjeta en la caja de comentarios. Sus comentarios serán compartidos con el personal del proyecto e incluidos en el registro oficial. También puede enviar sus comentarios y preguntas a: BronzeLine@metrotransit.org

APPENDIX B. DISPLAY BOARDS

METRO Bronze Line Project



- METRO Bronze Line
- Park & Ride
- Current METRO lines**
 - Gold Line (Bus Rapid Transit)
 - Green Line (Light Rail)
 - B Line (Bus Rapid Transit)
- Other Planned METRO lines**
 - Gold Line Extension (Bus Rapid Transit)
 - G & H Lines (Bus Rapid Transit)

- Exclusive bus lanes
- Side-running bus lanes



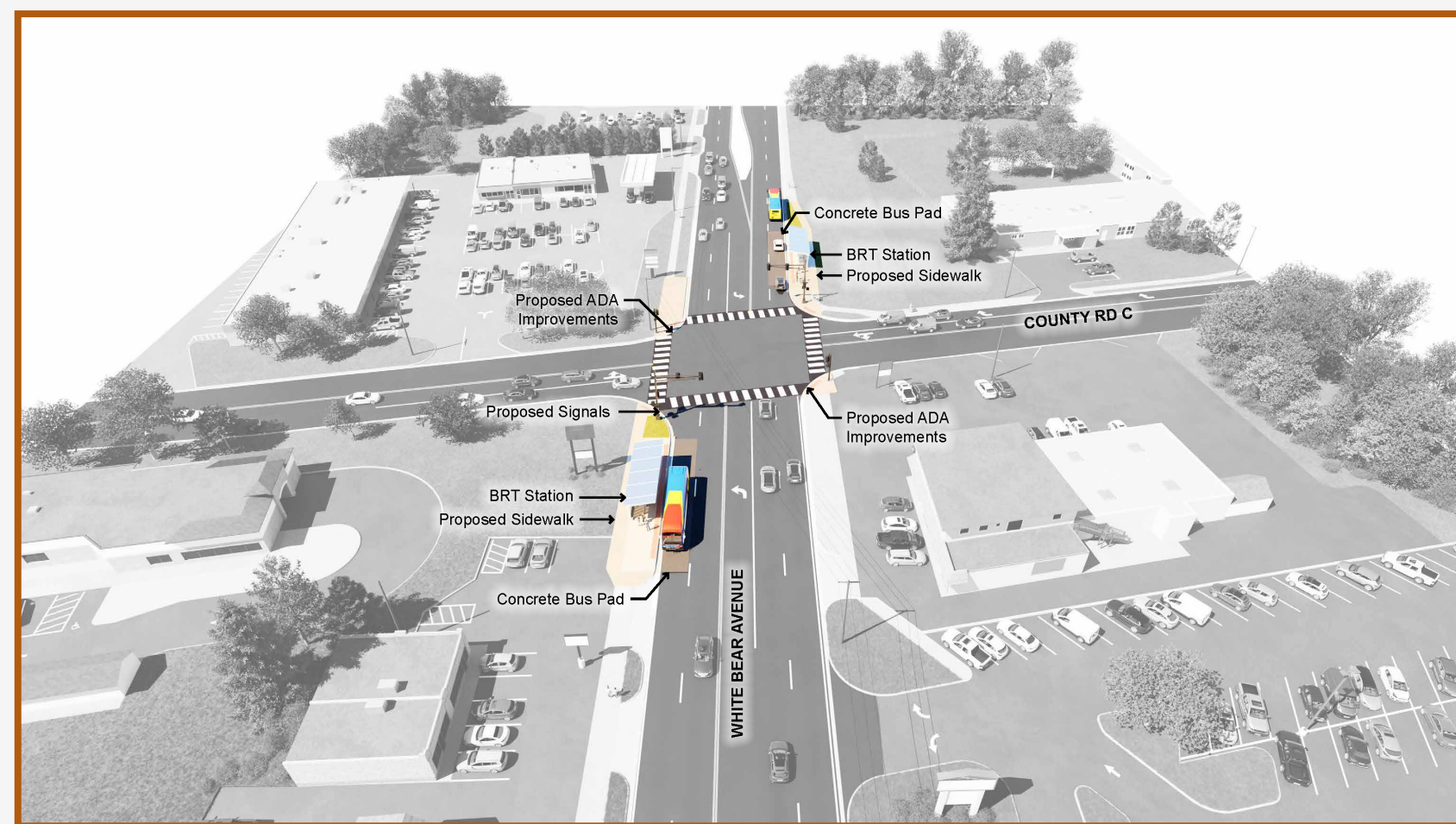
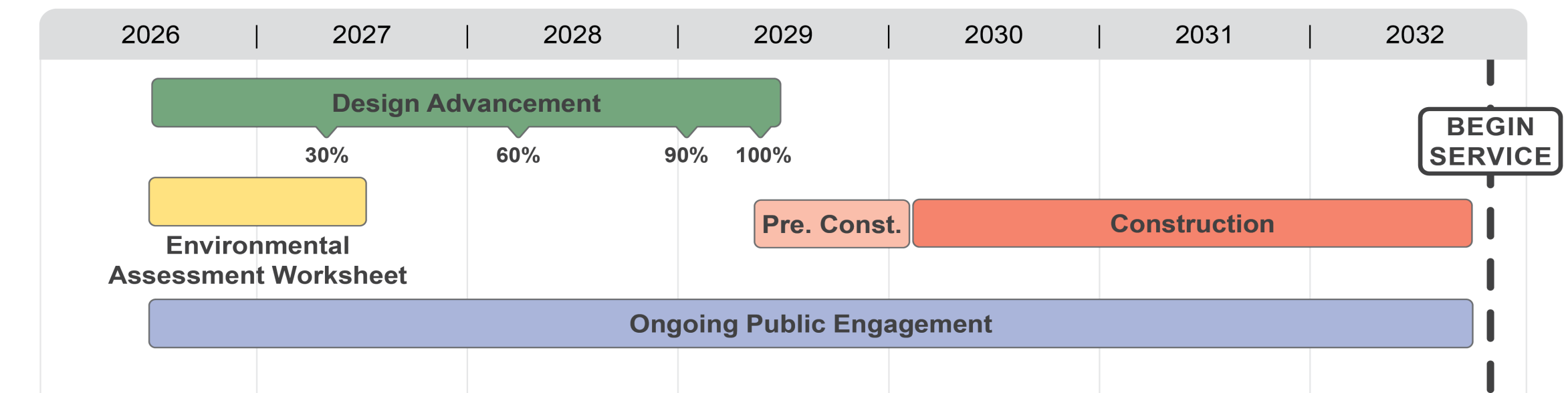
For more information, visit metrotransit.org/Bronze-Line-project

METRO Bronze Line Bus Rapid Transit Overview

Project Schedule

The Corridor Management Committee (CMC) is anticipated to make a recommendation to advance the project during its Dec. 11 meeting. Afterward, the Metropolitan Council would seek resolutions of support from Ramsey County and the cities of Maplewood and Saint Paul.

The schedule for the project's design, construction, and opening the new project is under development. More information about the longer-term schedule will be shared once available. Construction is not anticipated before 2028.



White Bear Avenue and County Road C in Maplewood



Maryland Avenue and Clarence Street in Saint Paul

In Maplewood, the project includes:

- An improved end-of-the-line station at the Maplewood Mall Transit Center
- Comfortable shelters with a variety of amenities including lighting and landscaping enhancements
- Traffic signal transit priority modifications
- Limited right-of-way acquisition to accommodate station platforms
- Improvements at station intersections, such as:
 - » Pedestrian ramps and signals
 - » Potential replacement of older traffic lights.

- Buses will operate in general purpose lanes north of Larpenteur Avenue

In Saint Paul, the project includes:

- A new BRT and multi-use trail bridge over Johnson Parkway (between Cook Station and Maryland Avenue)
- Comfortable shelters with a variety of amenities including lighting and landscaping enhancements
- Buses will operate in bus lanes along the route, including side-running bus lanes on Maryland and White Bear avenues south of Larpenteur
- Additional improvements include:
 - » Dedicated left-turn lanes and new medians
 - » Pedestrian ramps and signals
- Traffic signal transit priority modifications
- Right of way acquisition to accommodate roadway reconstruction and station platforms

For more information, visit:
metrotransit.org/bronze-line-project



METRO Bronze Line

Park & Ride

Current METRO lines

- Gold Line (Bus Rapid Transit)
- Green Line (Light Rail)
- B Line (Bus Rapid Transit)

Other Planned METRO lines

- Gold Line Extension (Bus Rapid Transit)
- G & H Lines (Bus Rapid Transit)

- Exclusive bus lanes
- Side-running bus lanes



Stay Connected

Sign up for email updates:
metrotransit.org/bronze-line-project

Email us:
BronzeLine@metrotransit.org

Call us:
651-602-1955

Follow us:
@MetroTransitMN



APPENDIX C. NOTICES

METRO Bronze Line

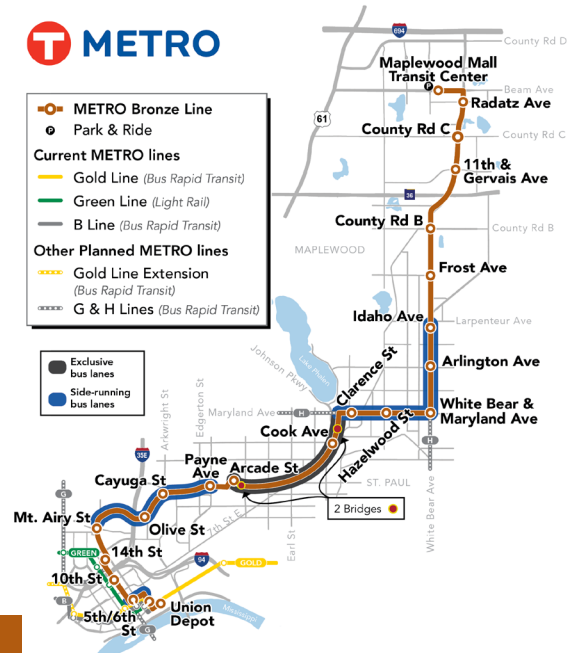
The Metropolitan Council, Ramsey County, and the cities of Maplewood and Saint Paul are excited to announce the METRO Bronze Line, a reimagined version of the former Purple Line bus rapid transit (BRT) project.

The Bronze Line will span about 10 miles, with 22 stations, five miles of bus lanes, and two new bridges. Stations will have near-level platforms, real-time arrival info, lighting, security cameras, and seasonal shelter amenities. BRT vehicles will allow all-door boarding with off-board fare collection. It will operate in mixed traffic in Maplewood and a mix of exclusive lanes and mixed traffic in Saint Paul.

To learn more about the project, share your feedback on an interactive map, and find meeting and pop-up event details:



metrotransit.org/bronze-line-project





Bronze Line

121 7th Place E, Suite 102
St. Paul, MN 55101

STAY CONNECTED!

Attend a virtual community meeting on Dec. 10 to learn more about the trajectory of the METRO Bronze Line and how it will move forward in Saint Paul and Maplewood.

VIRTUAL MEETING

Wednesday, Dec. 10 | Noon – 1:30 p.m.

Visit the website for the meeting link.

If you are interested in having Bronze Line staff come to your neighborhood groups, community organization, business, or event, please reach out.

SIGN UP FOR EMAIL UPDATES:

metrotransit.org/bronze-line-project

Email us: BronzeLine@metrotransit.org

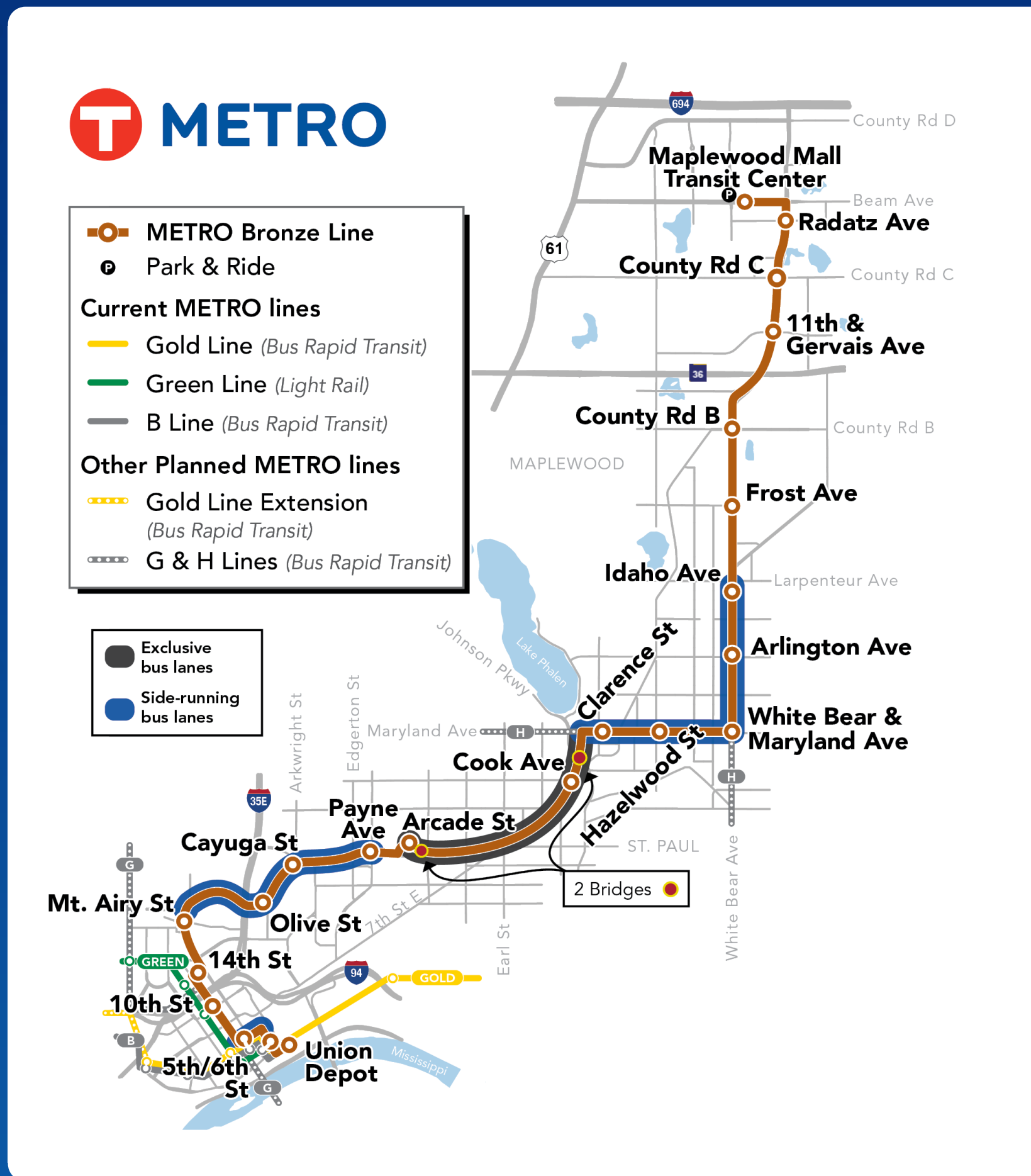
Follow us: @MetroTransitMN

PROJECT UPDATE!



The Metropolitan Council, Ramsey County and the cities of Maplewood and St. Paul announce the **METRO Bronze Line** bus rapid transit project.

metrotransit.org/bronze-line-project





UPCOMING COMMUNITY MEETING

VIRTUAL MEETING
WEDNESDAY, DEC. 10

UPCOMING COMMUNITY AND POP-UP EVENTS!



Join project staff at a community event near you and get to know the **METRO Bronze Line**.

Visit metrotransit.org/bronze-line-project to find an event near you.



APPENDIX D. UPDATE MEMOS

Date: 09/23/2025

To: Purple Line Policymakers, Staff, and Stakeholders

From: Craig Lamothe, Project Manager, Purple Line BRT

RE: Purple Line BRT Project Update

This memo is an update on current and upcoming Purple Line BRT Project activities which may be of interest to policymakers, staff, and stakeholders representing areas of the project corridor. This update includes:

- Current Project Status
- Public Outreach Update

Current Project Status

Below is a copy of the joint statement from Ramsey County and Metropolitan Council that was posted on both [Ramsey County's Purple Line page](#) and [Metro Transit's Purple Line page](#) on **September 23, 2025** along with an updated project map. This joint statement is being issued in advance of a more robust communications rollout and public announcement of the new color and website that is expected to occur after the Nov. 25 Ramsey County Board Workshop, tentatively scheduled to begin Dec 2 to allow for some early discussions with stakeholders to occur prior to the County Workshop to inform them of the project definition that is advancing and answer any questions.

Joint Statement

Ramsey County and the Metropolitan Council are committed to advancing equitable transit access through strategic investment in Saint Paul's East Side and the White Bear Avenue Corridor to Maplewood Mall.

In partnership with the cities of Maplewood and Saint Paul, we are delivering on our commitment to connect residents—particularly those with limited transportation options—to essential opportunities including employment, healthcare, and other critical services.

This project, formerly known as the METRO Purple Line, is now entering a new phase of development that will strengthen our shared transit vision by creating reliable, accessible connections that serve the diverse needs of our communities.

This investment reflects a fundamental belief: quality public transit is not just infrastructure—it's a pathway to opportunity that strengthens our entire region.

Additional background:

- The line will be reintroduced under a new name consistent with regional transit branding. Details about the name transition and future project phases will be shared soon.

- The Ramsey County Board will discuss this new direction at a Board Workshop in November. More information will follow that discussion.

Public Outreach Update

This fall, Metropolitan Council and Ramsey County through their project staff will lead a new round of public outreach to project stakeholders. Below are meetings scheduled to date. Meetings with other stakeholders (e.g., other district councils, area business associations) are in the process of being scheduled.

Table 1: Upcoming Stakeholder and Committee Meetings

Date	Event Name	Time
Sept.23	Payne-Phalen District 5 Planning Council Community Meeting	6 p.m.
Nov.17	Dayton's Bluff (District 4) Community Council Board of Directors Meeting	6:30 p.m.
Nov.19	Greater East Side (District 2) Community Council Board of Directors Meeting	6:30 p.m.
Nov. 25	Ramsey County Board of Commissioners Workshop	
Dec. 5	Purple Line Community & Business Advisory Committee	12:30-3 p.m.
Dec. 11	Purple Line Corridor Management Committee	1-2:30 p.m.
Jan. 7	Metropolitan Council's Transportation Accessibility Advisory Committee	12:30 p.m.

Below is a list of public outreach events that will take place from December 2, 2025, into January 2026. Specific dates, once known, will be posted on the project website. Other community events and locations are being identified for tabling and pop-ups.

Table 2: Upcoming Community Events

Date	Type	Event Name
Oct. 4	Tabling/Pop-up	Hazel Park Neighborhood Block Party
Dec. 4	Tabling/Pop-up	Centromex Supermercado – Saint Paul
Dec. 5	Tabling/Pop-up	Maplewood Mall Transit Center
Dec. 8	Tabling/Pop-up	Ramsey County Service Center - Saint Paul
Dec. 10	Virtual Open House	Via Teams to share project information, Q&A
Dec. 11	Tabling/Pop-up	Sun World Supermarket – Saint Paul
Dec. 15	Tabling/Pop-up	Ramsey County Service Center - Maplewood
Dec. 18	Tabling/Pop-up	Hmong Village – Saint Paul

Early next year, a formal recommendation on a revised Locally Preferred Alternative for the project is anticipated. Subsequently, the city councils of Saint Paul and Maplewood and the Ramsey County Board of Commissioners will consider resolutions of support for the recommendation. With the recommendation and resolutions of support, the Metropolitan Council will process an amendment to the region's long-range transportation plan.



Figure 1: New METRO BRT Project Map

Date: 12/29/2025

To: Purple Line Policymakers, Staff, and Stakeholders

From: Craig Lamothe, Project Manager, Purple Line BRT

RE: Bronze Line Project Update

This memo is an update on current and upcoming Purple Line BRT Project activities which may be of interest to policymakers, staff, and stakeholders representing areas of the project corridor. This update includes:

- Current Project Status
- Corridor Management Committee Recommendation
- Public Outreach Update
- Next Steps

Current Project Status

The Metropolitan Council, Ramsey County, and the cities of Maplewood and Saint Paul announced the METRO Bronze Line (see map on the last page of this memo), a reimagined version of the former Purple Line bus rapid transit (BRT) project on Tuesday, December 2 at a joint media event at Union Depot.

The Bronze Line will span about 10 miles, with 22 stations, five miles of bus lanes, and two new bridges. Stations will have near-level

platforms, real-time arrival info, lighting, security cameras, and seasonal shelter amenities. BRT vehicles will allow all-door boarding with off-board fare collection. It will operate in mixed traffic in Maplewood and a mix of exclusive lanes and mixed traffic in Saint Paul.

Read more and view the joint media event from our project partners:

- [Ramsey County](#)
- [Metropolitan Council](#)
- [City of Maplewood](#)
- [Saint Paul's recap video](#)
- [Ramsey County's social media video](#)

Figure 1: Project Staff and Partners at the Dec. 2 Media Event



Learn more about the project by visiting metrotransit.org/bronze-line-project

Corridor Management Committee Recommendation

On December 12, 2025, the Corridor Management Committee (CMC), made the following recommendations in support of implementing the stations, bus lanes, and bridges in the planned locations in Saint Paul and Maplewood:

- METRO Bronze Line as the revised Locally Preferred Alternative (LPA) for the Project, formerly known as Purple Line
- The Cities of Saint Paul and Maplewood, and Ramsey County to adopt Resolutions of Support for the recommended revised LPA
- Recommends the Metropolitan Council amend the recommended revised LPA into the region's long-range transportation plan

Public Outreach Update

Stakeholder and Community Events

Through January 2026, project staff will meet with key project stakeholders and the community provide a project update on alignment, scope, and new color decision.

Below are meetings scheduled to date. Meetings with other stakeholders (e.g., other district councils, area business associations) are in the process of being scheduled.

Table 1: Previous and Upcoming Stakeholder and Committee Meetings

Date	Event Name	Time
Sept. 23	Payne-Phalen Community Council Meeting (District 5)	6 p.m.
Oct. 23	Purple People	10 a.m.
Nov. 17	Dayton's Bluff Council Meeting (District 4)	6:30 p.m.
Nov. 19	Greater East Side Community Council Meeting (District 2)	6 p.m.
Dec. 4	Friends of the Parks and Trails	6 p.m.
Dec. 5	Community Business Advisory Committee	12:30 p.m.
Dec. 10	Saint Paul Indians in Action	Noon
Dec. 11	Corridor Management Committee	1 p.m.
Dec. 15	Saint Paul Planning Commission's Transportation Committee	4:30 p.m.
Dec. 19	Wakan Tipi	10 a.m.
Jan. 7	Metropolitan Council's Transportation Accessibility Advisory Committee	12:30 p.m.
TBD	Purple People	TBD
TBD	White Bear Avenue Business Association	TBD
TBD	East Side Area Business Association	TBD

Date	Event Name	Time
TBD	Capital Area Architectural and Planning Board	TBD
TBD	Frogtown Neighborhood Association (District 7)	TBD
TBD	CapitalRiver Council (District 17)	TBD

Below is a list of public outreach events that took take place from October through December.

Table 2: Previous Community Pop-up and Tabling Events

Date	Event Name	Time
Oct. 4	Neighborhood Block Party and Annual Elections at Hazel Park	12 p.m.
Dec. 4	Centromex Supermercado	3 p.m.
Dec. 5	Maplewood Mall Transit Center & Maplewood Mall	1 p.m.
Dec. 8	Ramsey County Service Center – Saint Paul	9 a.m.
Dec. 10	Virtual Community Meeting	Noon
Dec. 11	Sun World Supermarket	3 p.m.
Dec. 13	Union Depot European Christmas Market	5-7 p.m.
Dec. 15	Ramsey County Service Center - Maplewood	10 a.m.-1 p.m.
Dec. 18	Hmong Village – Saint Paul	Noon-3 p.m.

Next Steps

From January to August 2026, several critical steps will be undertaken to advance the project. First, Requests for Proposals will be issued to acquire consultant support during the engineering phase. Alongside this, efforts will be made to secure Resolutions of Support for the revised Locally Preferred Alternative to ensure community and stakeholder alignment. Working closely with the county, a Funding Agreement will be executed to secure the necessary financial backing. By mid-year 2026, new consultant teams are expected to be onboarded to provide their expertise.

It is important to note that there will be a temporary pause in design advancement and public engagement efforts until the new organizational structure takes effect with the teams of consultants in late summer/early fall. Looking ahead, a key decision on the type of bus propulsion will be made in 2028, which will shape the project's final engineering and implementation plans. Construction is not currently anticipated before 2028.

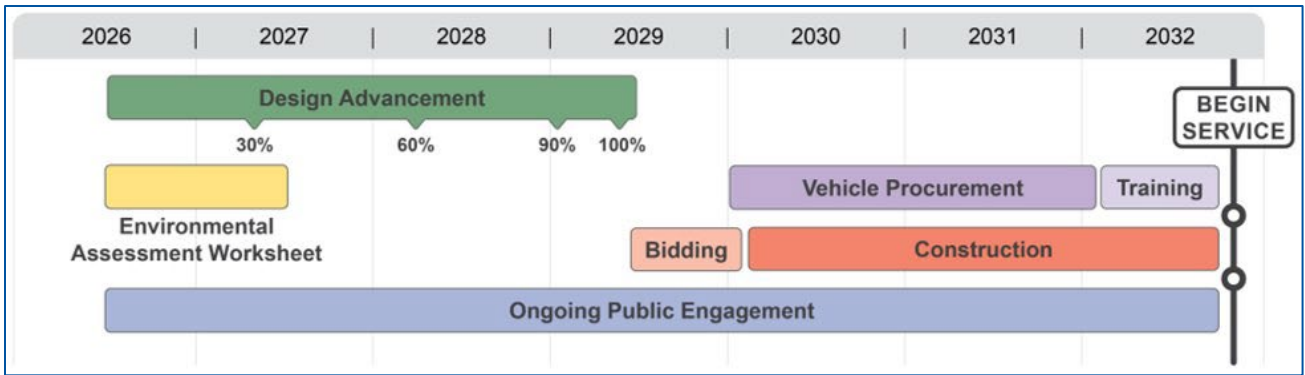


Figure 2: Longer Term Look Ahead Timeline

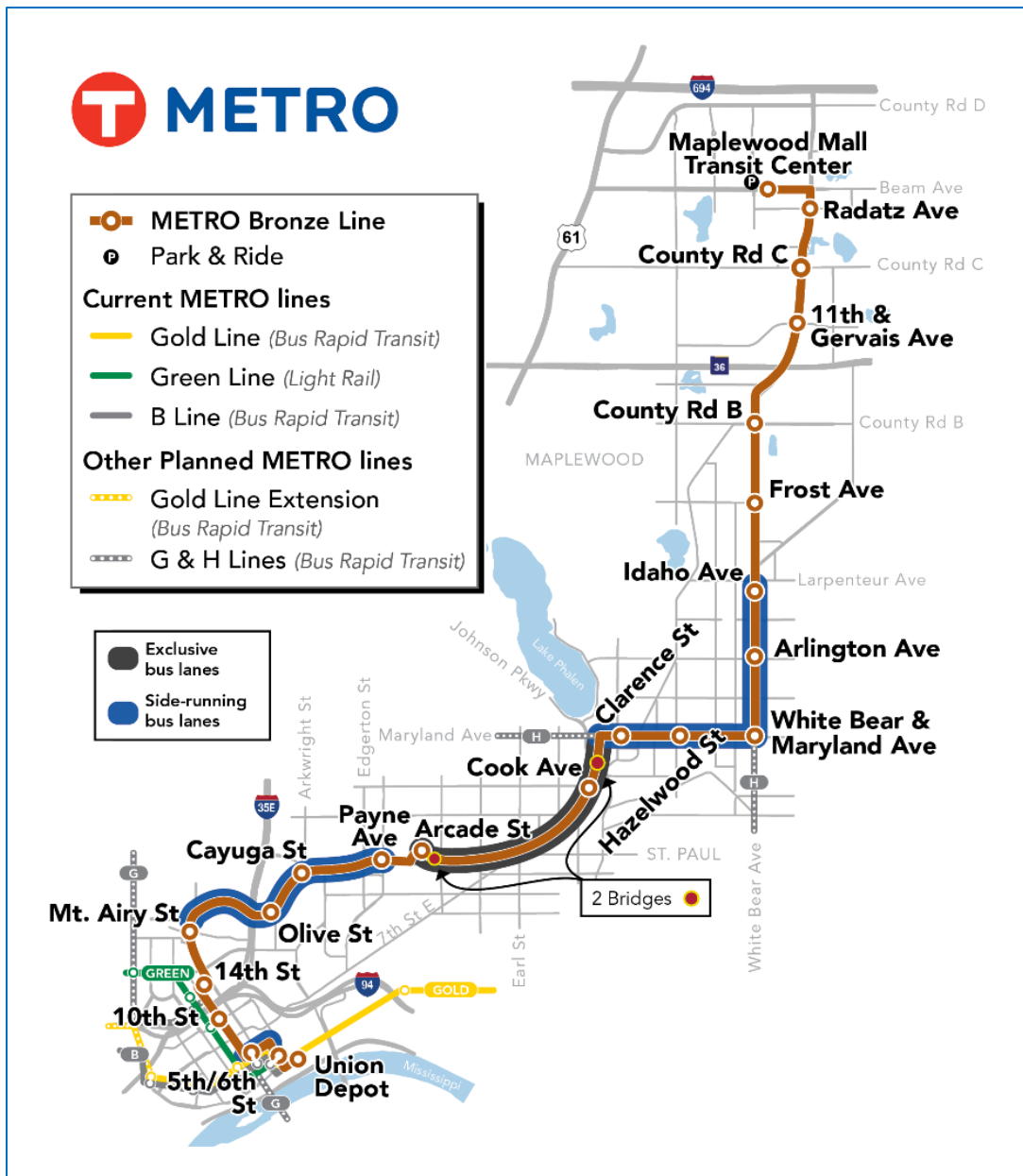


Figure 3: Bronze Line Project Map

APPENDIX E. NEWSLETTER

Introducing the new METRO Bronze Line!

The Metropolitan Council, Ramsey County, and the cities of Maplewood and Saint Paul announced the METRO Bronze Line, a reimagined version of the former Purple Line bus rapid transit (BRT) project on Tuesday, December 2 at a joint media event.

Read more and view the joint media event from our project partners:

- [Ramsey County](#)
- [Metropolitan Council](#)
- [City of Maplewood](#)
- [Saint Paul's recap video](#)
- [Ramsey County's social media video](#)



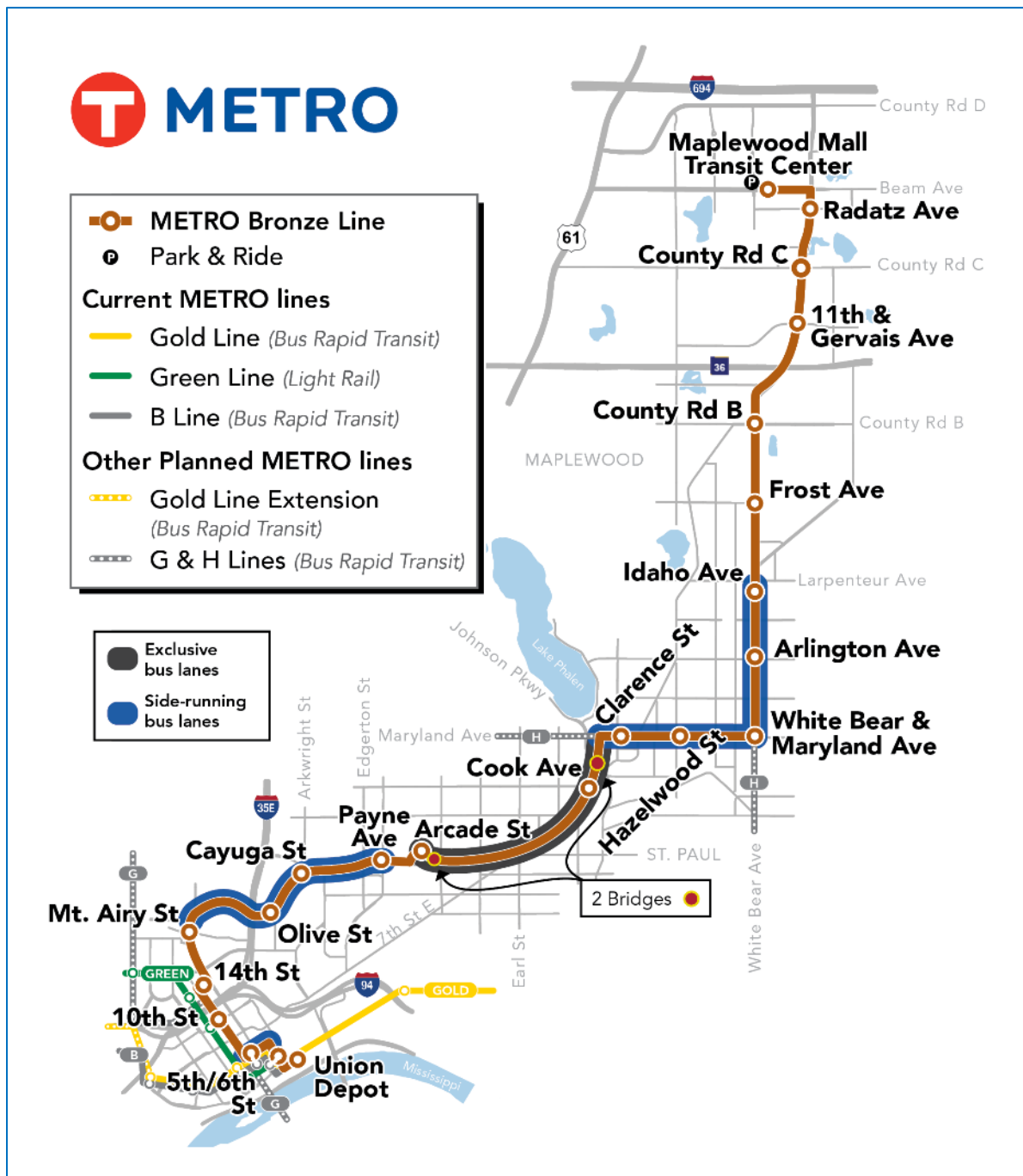
The Bronze Line will span about 10 miles, with 22 stations, five miles of bus lanes, and two new bridges. Stations will have near-level platforms, real-time arrival info, lighting, security cameras, and seasonal shelter amenities. BRT vehicles will allow all-door boarding with off-board fare collection. It will operate in mixed traffic in Maplewood and a mix of exclusive lanes and mixed traffic in Saint Paul.

To learn more about the project, share your feedback on an interactive map, and find meeting and pop-up event details, visit metrotransit.org/bronze-line-project

Corridor Management Committee recommendations

On December 12, 2025, the Corridor Management Committee (CMC), made the following recommendations in support of implementing the stations, bus lanes, and bridges in the planned locations in Saint Paul and Maplewood:

- METRO Bronze Line as the revised Locally Preferred Alternative (LPA) for the Project, formerly known as Purple Line
- The Cities of Saint Paul and Maplewood, and Ramsey County to adopt Resolutions of Support for the recommended revised LPA
- Recommends the Metropolitan Council amend the recommended revised LPA into the region's long-range transportation plan

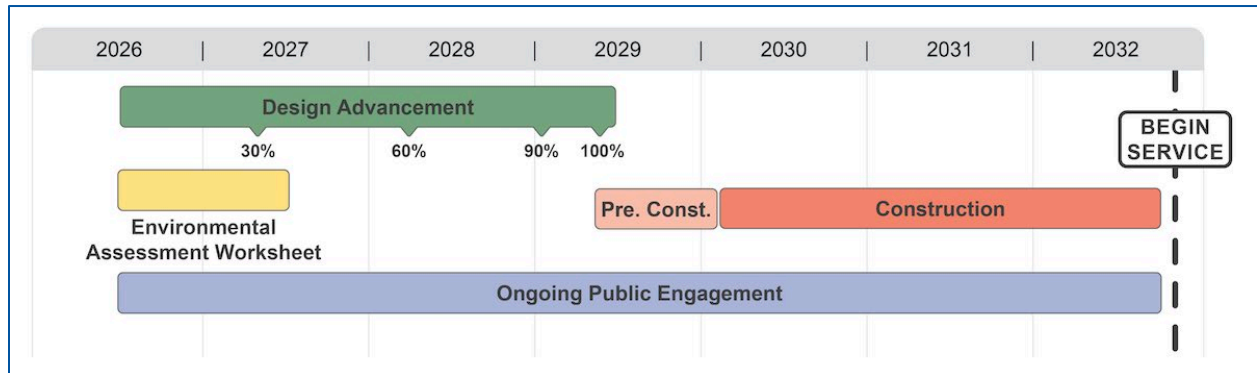


Next Steps

The schedule for the project's design, construction, and opening is under development. More information about the project schedule will be shared once available.

It is important to note that there will be a temporary pause on design advancement and public engagement efforts until the new organizational structure takes effect with the teams of consultants in late summer/early fall 2026.

Construction is not currently anticipated before 2028.



Stay up-to-date on Bronze Line project activities

Follow us on social media

Get the latest Bronze Line updates by following us on [Facebook](#) and [X](#) @MetroTransitMN

Sign up for project updates to get the latest information

If you were forwarded this e-newsletter and want to receive this information directly, sign up to receive the Bronze Line project updates: metrotransit.org/bronze-line-project



APPENDIX F. PROPERTY OWNER NOTIFICATIONS



127 7th Place E, Suite 102
St. Paul MN 55101

December 29, 2025

[company/org Field (if applicable)]
[Mailing Street Address, unit number Field]
[City, State, Zip Field]

The Metropolitan Council, Ramsey County and the Cities of Maplewood and Saint Paul, introduced the METRO Bronze Line Bus Rapid Transit (BRT) on December 2. The Bronze Line BRT is a reimagined and community-responsive project that aims to improve public transportation in Saint Paul and Maplewood, offering an efficient, reliable, and sustainable transit option for the community to connect to jobs, housing, education, healthcare and other services. Please find the project map on the back of this letter.

Last year, this property received a letter about potential impacts due to the design of side-running or center-running bus-only lanes from the METRO Purple Line BRT on Maryland and White Bear avenues. Properties were identified based on impacts to access, parking, or other property features such as station placements or right-of-way expansions.

The Bronze Line BRT will not include center running or side running bus-only lanes, buses will operate in the existing general traffic lanes through Maplewood. While the project is at an early stage in the design phase and property impacts are not final, due to the buses being proposed to run in mixed traffic instead of bus lanes, we anticipate property impacts being substantially less than with center running or side running lanes. However, some property impacts along the street frontage could occur from station construction, intersection improvements or minor changes to access. More information will be known later in 2026 and early 2027 as design of the new concept proceeds.

An overall schedule for designing, constructing and opening the Bronze Line is currently under development. More information about the longer-term schedule will be shared once available. Construction is not currently anticipated before 2028 and operations no earlier than 2030.

Thank you for your patience as we progress this significant project. Should you have any questions or would like to schedule a meeting with project staff, contact us at BronzeLine@metrotransit.org.

For more information about the project, visit the project website at metrotransit.org/bronze-line-project.

Sincerely,

METRO Bronze Line Project Team

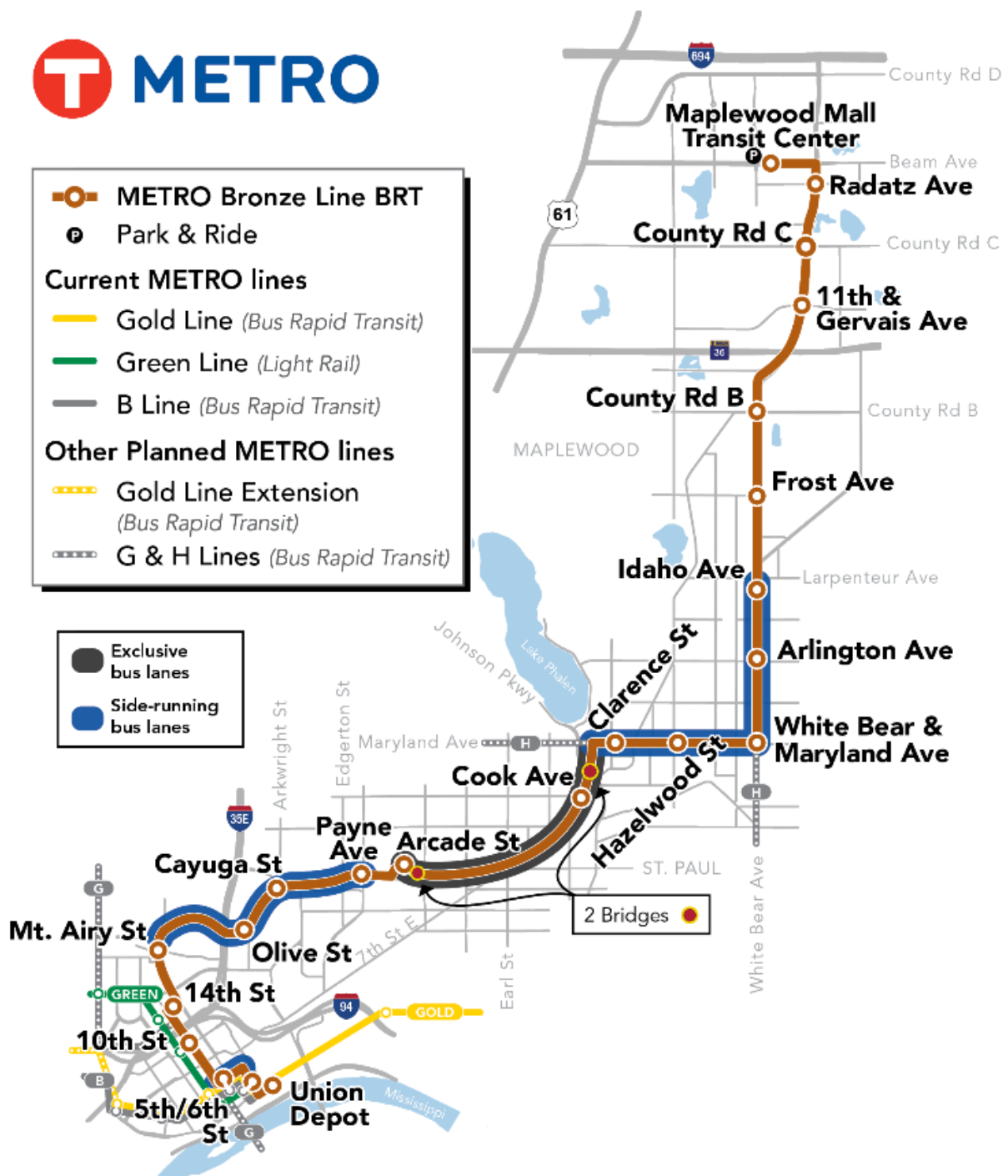


Figure 1. Bronze Line project map alignment



127 7th Place E, Suite 102

St. Paul MN 55101

December 29, 2025

[Company/org Field (if applicable)]

[Mailing Street Address, unit number Field]

[City, State, Zip Field]

The Metropolitan Council, Ramsey County and the Cities of Maplewood and Saint Paul, introduced the METRO Bronze Line Bus Rapid Transit (BRT) on December 2. The Bronze Line BRT is a reimaged and community-responsive project that aims to improve public transportation in Saint Paul and Maplewood, offering an efficient, reliable, and sustainable transit option for the community to connect to jobs, housing, education, healthcare and other services. Please find the project map on the back of this letter.

Last year, this property received a letter about potential impacts due to the design of side-running or center-running bus-only lanes from the METRO Purple Line BRT on Maryland and White Bear avenues. Properties were identified based on impacts to access, parking, or other property features such as station placements or right-of-way expansions.

The Bronze Line BRT project will include side-running lanes and road reconstruction on Maryland and White Bear avenues in Saint Paul. While the project is at an early stage in the design phase and property impacts are not final, the current design plans do mean some level of impact to your property. An overall schedule for designing, constructing, and opening the new project is currently under development. More information about the longer-term schedule will be shared once available. Construction is not currently anticipated before 2028 and operations no earlier than 2030. Additionally, the project plans to implement construction mitigation measures to support residents and local businesses during construction.

Thank you for your patience and understanding as we progress this significant project. Should you have any questions or would like to schedule a meeting with project staff, contact us at BronzeLine@metrotransit.org.

For more information about the project, visit the project website at metrotransit.org/bronze-line-project.

Sincerely,
METRO Bronze Line Project Team

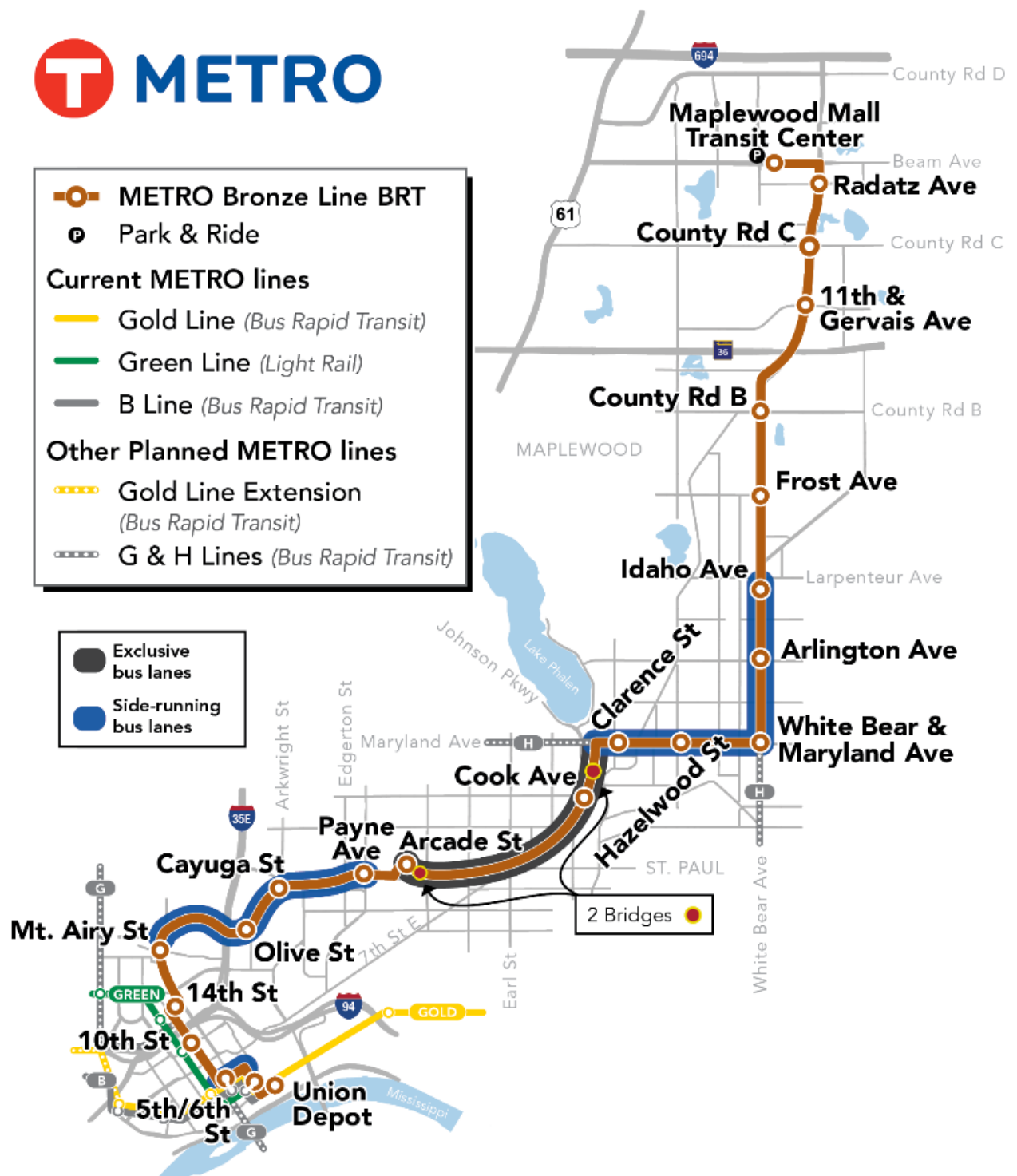


Figure 1. Bronze Line project map alignment