



Corridor Management Committee

Meeting #5 | June 29, 2023

Call to Order & Welcome

Charlie Zelle | CMC Chair

Housekeeping

- Virtual meetings
 - Camera
 - Microphone (muted when not speaking)
 - Raise hand (if you have a question)
 - Chat (feel free to ask questions in the chat)
- Recording
- Meeting agendas, summaries, and presentation materials are posted on the project website at metrotransit.org/purple-line-project-committees

Today's Topics

- 1) Call to Order & Welcome
- 2) Community & Business Advisory Committee Report
- 3) Community Outreach & Engagement Report
- 4) BRT Route Modification Study Phase II Update
- 5) Next Steps & Adjourn

Community & Business Advisory Committee Report

Ianni Houmas | CBAC Co-chair

Laurie Malone | CBAC Co-chair

Early RMS Phase II Outreach and Engagement

Liz Jones | Community Outreach & Engagement Lead

Recent Outreach & Engagement Activities

Date	Event/ activity type	Event name/location	Purpose	Number of folks engaged with
5/23/2023	Tabling Event	Hayden Heights Library	White Bear Avenue Routing	10
5/30/2023	Pop-Up	Harmony Learning Center	White Bear Avenue Routing	32
5/31/2023	Tabling Event	Aldrich Arena Farmer's Market	White Bear Avenue Routing	18
6/3/2023	Canvassing	Bruce Vento Trail – Frost Avenue	Bruce Vento Trail	25
6/3 - 6/4/2023	Community Event	Train Days - Union Depot	All Routing	116
6/6/2022	Canvassing	White Bear Ave Businesses	White Bear Avenue Routing	25
6/7/2023	Tabling Event	St. Paul Farmer's Market	All Routing	18

Recent Outreach & Engagement Activities (Cont.)

Date	Event/ activity type	Event name/location	Purpose	Number of folks engaged with
6/13/2023	Canvassing	Bus Routes 80,64,54	White Bear Avenue Routing	17
6/14/2023	Tabling Event	Aldrich Arena Farmer's Market	White Bear Avenue Routing	14
6/21/2023	Tabling Event	Aldrich Arena Farmer's Market	White Bear Avenue Routing	20
6/23/2023	Canvassing	Maryland Avenue Canvassing	White Bear Avenue Routing	

Top 5 Feedback Areas

1. Safety and security on our existing transit system
2. Transportation behaviors along Bruce Vento and White Bear Ave.
3. Existing conditions of White Bear Ave. and Bruce Vento
4. Feedback about transit services in general
5. Route cuts / decline in service frequency and reliability

Overall Feedback Themes

- Most had a preference towards White Bear Ave. at almost all the events
- Concerns about taking a dedicated lane on White Bear Ave., but preferred this over the Bruce Vento
- Safety on White Bear Ave. - crash / speeding heavy, poor road conditions, snow removal issues
- Safety on transit – many stories of unsafe conditions on bus/light rail
- St. Paul residents would use the route to connect to the Trail and saw White Bear Ave. with "more useful" locations
- Bruce Vento – sees development opportunities for local businesses and future housing development as well as pointing out the trail being diversely used, but emptier during the weekday
- 80, 64, and 54 routes serve North Saint Paul, Mall of America and Sun Ray – how will this project improve/replace?

Upcoming Outreach & Engagement Activities

Date	Event/ activity type	Event name/location	Purpose
6/26/2023	Tabling Event	Ramsey County Service Center (Maplewood)	White Bear Avenue Routing
6/27/2023	Presentation / Feedback Event	Payne/Phalen Community Council	White Bear Avenue Routing
6/29/2023	Tabling Event	Ramsey County Service Center	White Bear Avenue Routing
6/29/2023	Open House	What's Happening on WBA	White Bear Avenue Routing
7/5/2023	Tabling Event	St. Paul Farmer's Market	All Routing
7/10/2023	Presentation	Land Use and Transportation Committee	All Routing
7/10/2023	Tabling Event	La Canasta Familiar - CLUES	All Routing
7/11/2023	Open House	Move Minnesota	All Routing
7/26/2023	Community Event	Summer Event - Maplewood	White Bear Avenue Routing

**subject to change*

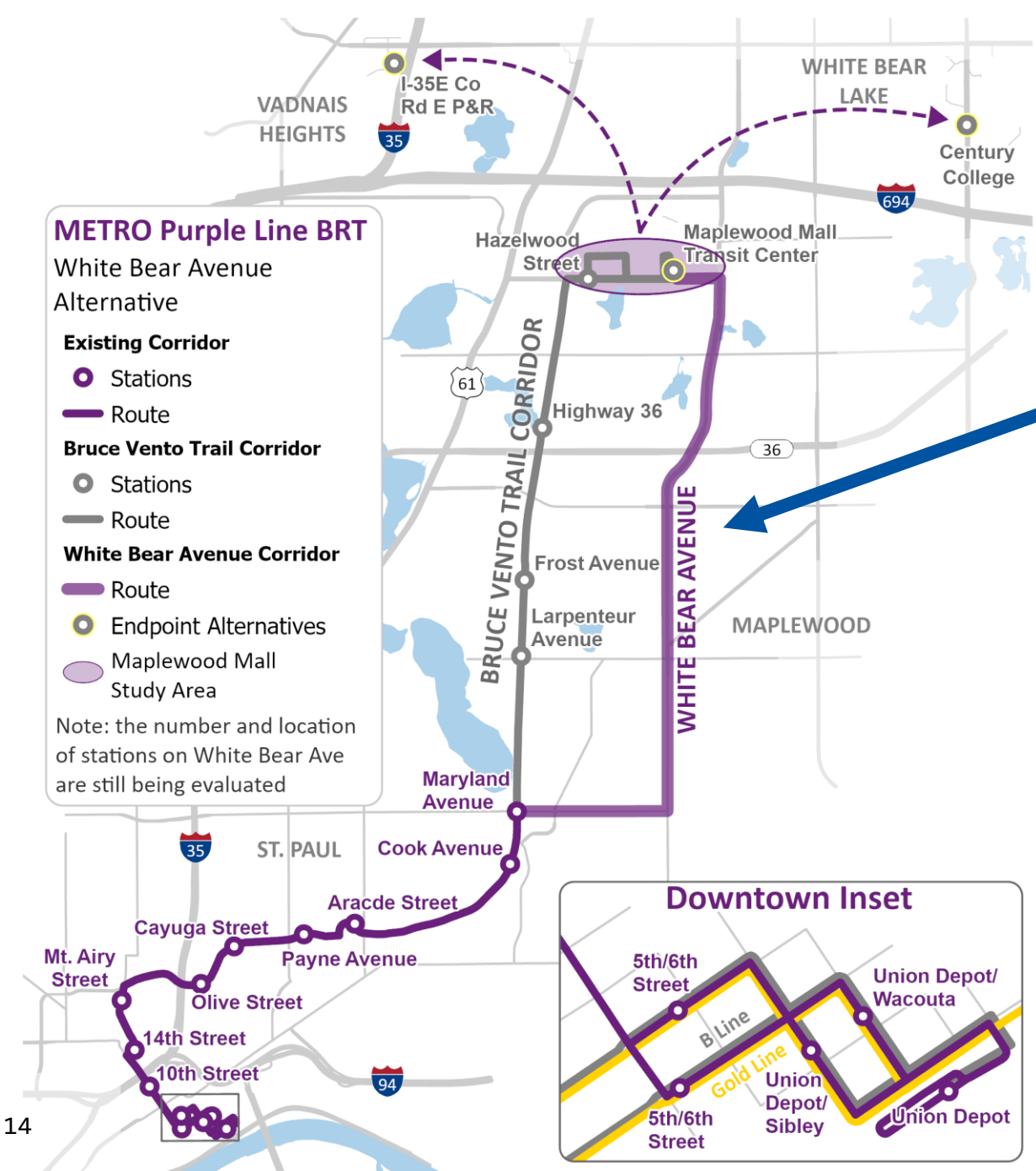
Route Modification Study Phase II Update

Craig Lamothe | Purple Line Project Manager

BRT Route Modification Study (RMS) Phase II

- **Definition:** In response to the March 2023 Ramsey County Letter to the City of Maplewood, the Purple Line Corridor Management Committee gave direction to study the feasibility of modifying the BRT route to operate on Maryland Avenue and White Bear Avenue in dedicated lanes with lane reconfiguration.
- **Goal:** To develop and evaluate the new routing alternative up to a level sufficient for comparison to the BRT line/regional trail colocation alternative to inform a recommendation on final alignment and northern terminus station (revised Locally Preferred Alternative)

RMS Phase II Study Area



- Study area is between Johnson Parkway and Mapplewood Mall Transit Center
- Extensions to Vadnais Heights or Century College may be studied after the initial evaluation is complete
- Identify preferred alignment, guideway configurations and station locations

Stay Consistent with Project's Purpose and Needs

PURPOSE

“To provide transit service that satisfies the ***long-term*** regional mobility and accessibility needs for businesses and the traveling public and supports sustainable development within the corridor area”

NEEDS

- “Serving the needs of people who ***rely on transit***”
- “Meeting increasing demand for ***reliable, high-frequency transit***”
- “Planning for sustainable ***growth and development***”
- “Expanding multimodal ***travel options***”

RMS Phase II Scope Coordination



- Service Development
- Bus Operations
- Engineering and Facilities
- H Line Project (Maryland Ave)



- Public Works



- City Council
- Public Works
- Community Development



- Public Works
- Planning & Economic Development

RMS Phase II Technical Considerations

- Lane re-purposing (i.e., considering right of way space, impacts to on-street parking, Hwy 36 bridge, level of reconstruction)
- Traffic and property access impacts
- Guideway (lane widths, location within roadway)
- Station location considerations (right of way impacts, station spacing, shared stations with other local routes / H Line)
- Pedestrian and bicycle facilities – safety improvements, streetscape improvements, connections to other existing and planned facilities

RMS Phase II Evaluation Process Steps



Compliance with Environmental Review Process

- ✓ An **Environmental Assessment (EA)** and an **environmental decision** (Finding of No Significant Impact or FONSI) were **published** for the Locally Preferred Alternative (LPA) collocating the BRT route with the Bruce Vento Regional Trail.
- A modified BRT routing on Maryland and White Bear Avenues will **need to be compared** against the collocation routing **for consistency with the project's purpose and need**, and changes to community benefits and environmental impacts.
- If a routing using Maryland and White Bear Avenues is recommended as the revised LPA, then **a supplemental EA will likely be needed**. A supplemental EA would likely take **approximately 12 months to complete** from the time of a revised LPA decision.
- Route Modification Study Phase II will **document the evaluation between Bruce Vento Regional Trail Collocation and White Bear/Maryland Avenue BRT Route Alternatives** for later inclusion in a supplemental EA
 - Includes reports such as traffic, social, land use, environmental impacts, etc.

RMS Phase II Project Inputs

Traffic Study

Traffic and pedestrian counts

Traffic Safety Analysis

Identify Transit Advantage Locations

Issues and Constraints

Evaluating a.m., midday, and p.m. peak hour

Capital/Operating Cost

Preliminary Capital Cost and Operating Estimates on WBA

Refresh Cost of Bruce Vento Trail Alignment

15% Design on Preferred WBA

Ridership Analysis

2022 Met Council Transit On-Board Survey

Network Now

2022 Post-Pandemic Analysis

Refresh of Bruce Vento Trail Alignment

FTA Project Rating Evaluation

Review of new FTA Rating Guidance

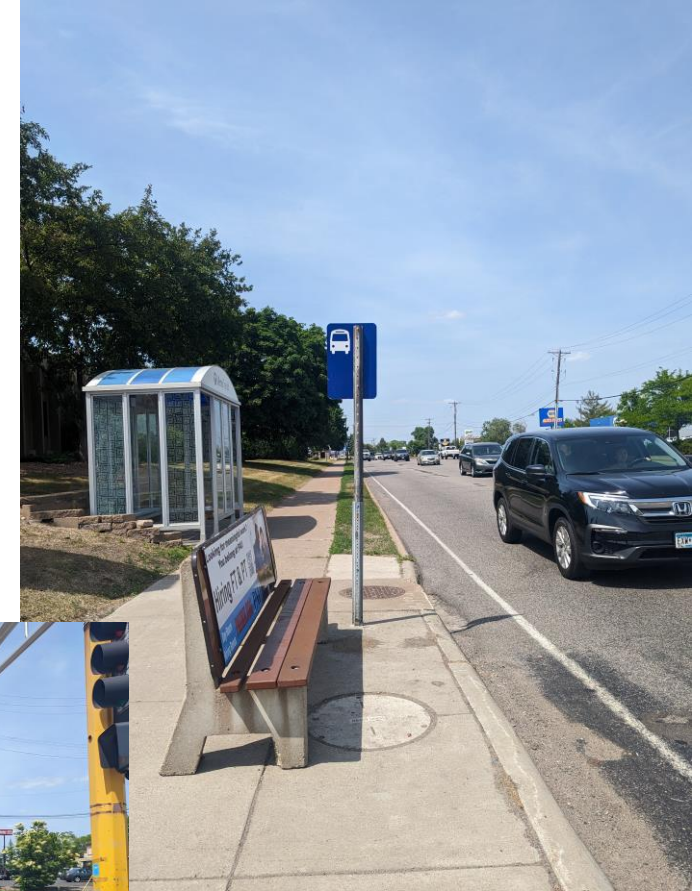
Develop Preliminary Rating for WBA

Refresh Rating for Bruce Vento Trail Alignment

Develop Rating on 15% design of preferred WBA

Reviewing Existing Conditions and Corridor Characteristics

- Existing conditions will set the foundation of the study. This includes:
 - Traffic counts, land use, crash data, demographic data, existing transit locations, existing parking, bike/walkshed, and economic data.
 - Identification of potential station locations
 - Develop a mutual understanding of traffic analysis and any design or location-specific issues and constraints with Stakeholders
 - Engagement with the community to understand challenges and opportunities



Development of Maryland and White Bear Ave Design Options



Initial Development of Roadway Cross-Section and Layout Design Options along Maryland and White Bear Avenue

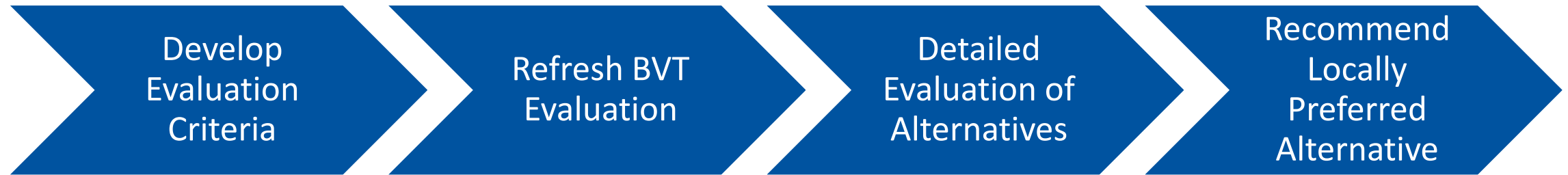
- Determine Guideway Concepts that includes but not limited to Side Running, Center Running, Business Access and Transit (BAT) Lanes, etc.
- Development of evaluation criteria for screening design options
- Development of roadway design options for right-of-way changes that considers:
 - Guideway Configurations
 - Safety and Access Management
 - Pedestrian Space
- Recommend leading concepts for detailed screening analysis

Recommend the Preferred Design Option



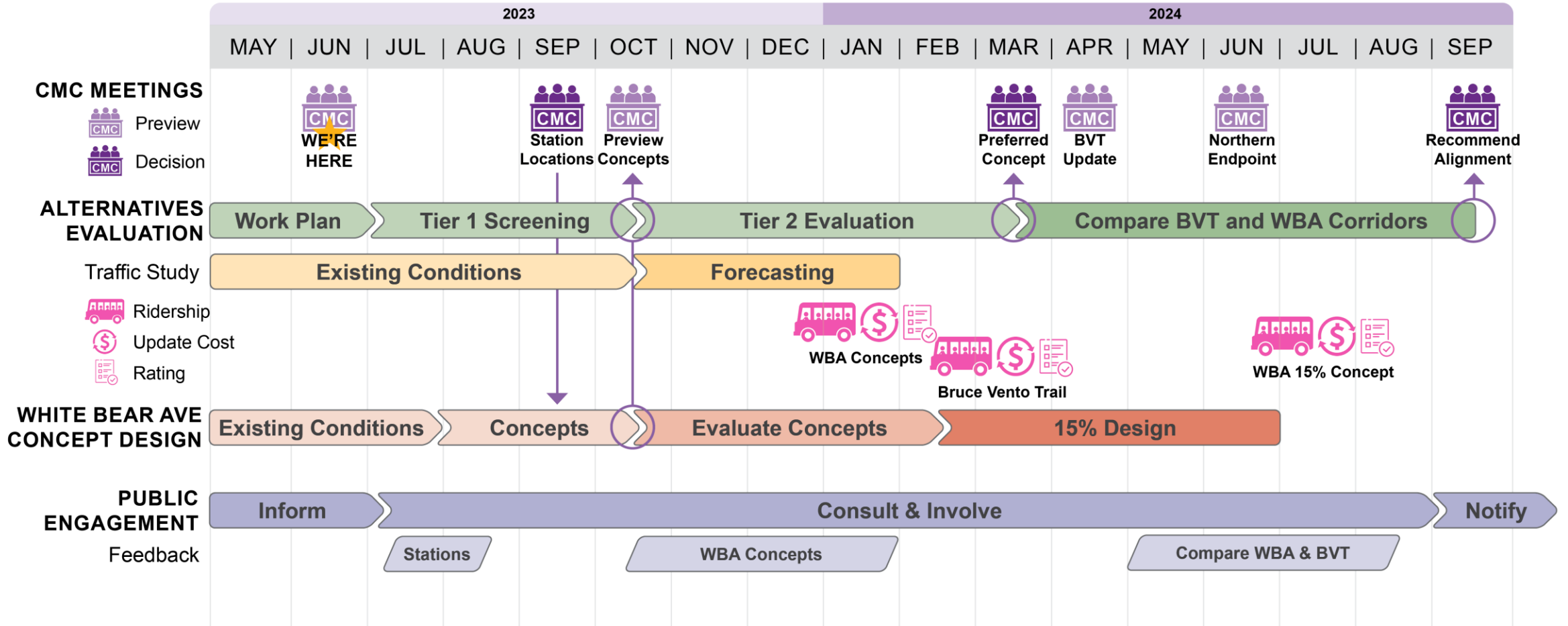
- Iterative process between design refinements and evaluation of leading design options
- Traffic study completed during this phase
- Selection of Preferred Roadway Design Option for White Bear and Maryland Avenues

Comparing BRT on White Bear Ave to co-located with Bruce Vento Trail

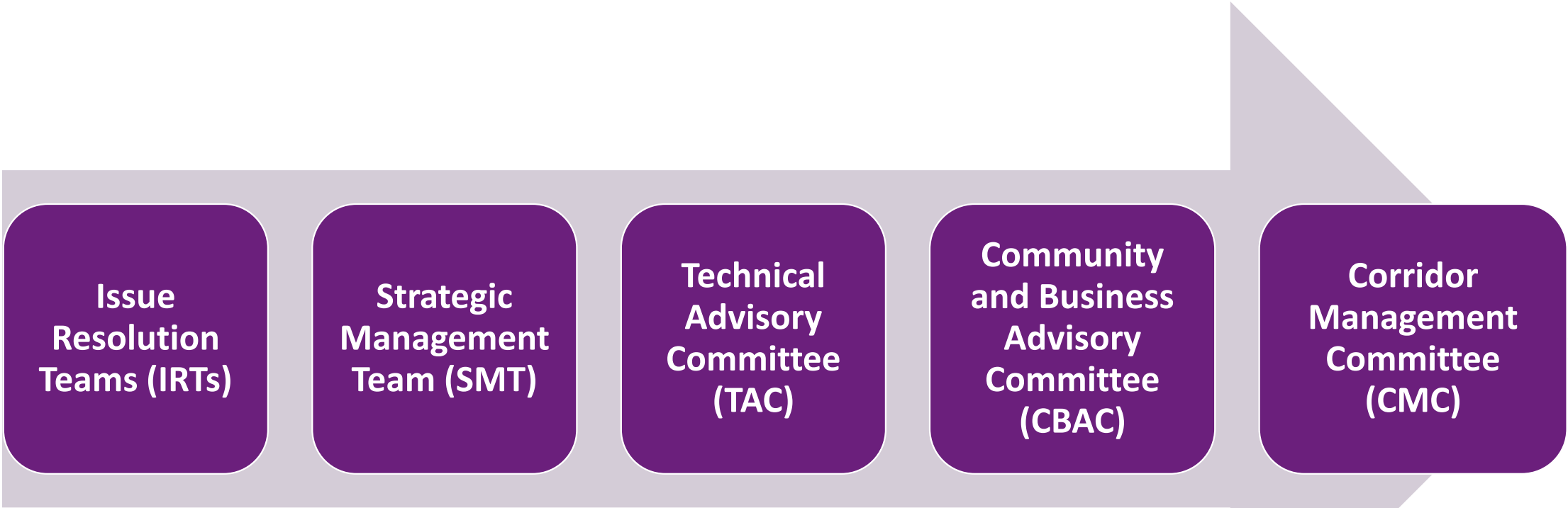


- Capital and Operating Cost Estimates, Ridership, Project Rating finalized for White Bear Avenue Route Alternative
- Refresh of Colocation with Bruce Vento Regional Trail Route Alternative data (cost, ridership, rating) to facilitate comparison to recommended White Bear Avenue Route Alternative
- Recommendation of a revised Locally Preferred Alternative

RMS Phase II Project Schedule



Stakeholder Coordination & Decision Making



Do you know of individuals who might be interested in representing the business or residential interests along the White Bear Avenue corridor?

Issue Resolution Team (IRT)

Purpose: To have continuous collaboration with project partners to identify, evaluate and resolve technical issues related to RMS Phase II.

- Meet weekly
- Serve as a staff level technical information resource and liaison to the agencies represented
- Provide input on project design and engineering topics, including station locations, existing utilities, traffic and crash studies, guideway type, cost estimates, roadway operations, etc.
- Identify potential issues and strategies to mitigate the impacts of construction and operation on users of the corridors

IRT Membership

- **Cities:** Saint Paul and Maplewood Public Works, Saint Paul Planning and Economic Development, Maplewood Community Development
- **Metro Transit:** Engineering & Facilities, Bus Transportation, Service Development, H Line BRT Project (Maryland Ave)
- **County:** Ramsey County Public Works
- **State:** MnDOT Metro District

Strategic Management Team (SMT)

Purpose: To work through key project issues before they are presented to the other committees or project partners, and:

- Meets monthly
- Serves as strategic advisors to the project management team (PMT)
- Advises on timing and content of presenting technical and policy information to the other project committees, project partners, project stakeholders and the public.
- Communicates SMT proceedings within their respective agency

SMT Membership

- **Metro Transit:** Deputy General Manager, Capital Programs
- **Ramsey County:** Public Works Deputy Director
- **Metropolitan Council:** Metropolitan Transportation Services Director
- **MnDOT Metro District:** Planning, Program Management and Transit Director

Technical Advisory Committee (TAC)

Purpose: To discuss issues and outcomes from the IRT process.

- Meets monthly
- Advises on timing and content of technical information presented to CBAC and CMC
- Receives a preview of information before it is presented to CBAC and CMC
- Communicates TAC proceedings to their respective CMC members

TAC Membership

- **Metropolitan Council:** Community Development and Metropolitan Transportation Services
- **Metro Transit:** Engineering & Facilities, Bus Operations, Service Development and Transit Oriented Development
- **Ramsey County:** Public Works, Community and Economic Development, Parks and Rec
- **Saint Paul:** Public Works, Planning and Economic Development
- **Maplewood:** Public Works, Community Development
- **White Bear Lake:** Public Works, Community Development
- **Capitol Area Architecture and Planning Board**
- **MnDOT Metro District Program Delivery**

Community and Business Advisory Committee (CBAC)

Purpose: To serve as a voice for the corridor residential and business communities, advise the CMC, and:

- Meets bi-monthly and CBAC co-chairs will serve as members of the CMC and provide updates of CBAC activities at CMC meetings
- Serve as an information resource and liaison to the greater corridor community
- Advise on communications and outreach strategies related to the Project
- Identify potential issues and strategies to mitigate the impacts of construction and operation on residences and businesses

CBAC Membership

- At-large Ramsey County (7 seats)
- Maplewood Business (1 seat) and Resident (2 seats)
- St. Paul Business (3 seats) and Resident (5 seats)
- Vadnais Heights Business (2 spots)
- White Bear Lake Business (2 seats) and Resident (3 seats)
- White Bear Township Business (1 seat)
- Transportation Accessibility Advisory Committee Representative (1 seat)

Corridor Management Committee (CMC)

Purpose: To advise the Metropolitan Council, the federal grantee and eventual owner and operator, and Ramsey County, the local funding partner, on the design and construction of the project, and:

- Meets bi-monthly
- Membership includes elected and appointed officials
- Assisting in the development of solutions to issues or impacts
- Identifying project related concerns or issues

CMC Membership

- Metropolitan Council (2 seats) – Chair (CMC Chair) and Council Member
- Ramsey County (2 seats) – Commissioners (one serves as CMC Vice Chair)
- City of Saint Paul (1 seat) – Mayor or Council Member
- City of Maplewood (1 seat) – Mayor or Council Member
- City of White Bear Lake (1 seat) – Mayor or Council Member
- City of Vadnais Heights (1 seat) – Mayor or Council Member
- City of Gem Lake (1 seat) – Mayor or Council Member
- White Bear Township (1 seat) – Supervisor
- City of Mahtomedi (1 seat) – Mayor or Council Member
- Metro Transit (1 seat) – General Manager
- MnDOT (1 seat) – Metro District Engineer
- CBAC (1 seat) –CBAC co-chair

RMS Phase II – Community Outreach and Engagement

Liz Jones | Purple Line Community Outreach & Engagement Lead

Outreach, Engagement & Communication Methods

- Project handout with information about route options, next steps, and contact information
- Door hangers
- Display boards for use at pop-ups, open houses, and to leave at community centers/libraries
- Outreach at existing transit facilities
- Project website updates, social media, newsletter email
- Translated materials

WHAT IS BUS RAPID TRANSIT (BRT)?

Bus Rapid Transit (BRT) is a package of transit enhancements that adds up to a **faster trip** and an **improved experience**.

Purple Line BRT is a bus service that offers unique features:

More frequent service

- Provides all-day service that operates seven days a week with buses arriving every 10-15 minutes

A faster ride

- Pay before you board so the bus leaves the station faster
- Raised platforms help you step or roll on and off easily
- Fewer stops than local routes and bus-only lanes that help keep the bus moving
- Buses can "ask" traffic signals for early or extended green lines

Stations with enhanced amenities

- Shelters will provide comfortable waiting space and a variety of amenities: NextTrip real-time departure signs, maps, heat, lighting, bike racks, and added security with cameras and emergency telephones

Example of a BRT bus stop and potential amenities:

- Pylon station marker
- Shelter with heat, light, and seating
- Vertical bike parking
- Real-time arrival information
- Bench seating
- Trash and recycling bins
- Bike parking traps
- Textured warning strip and raised curb
- Fare card validator
- Information kiosk
- Ticket vending machine

10-15 minutes bus frequency

Connections to park-and-ride facilities

Display board

T METRO Purple Line

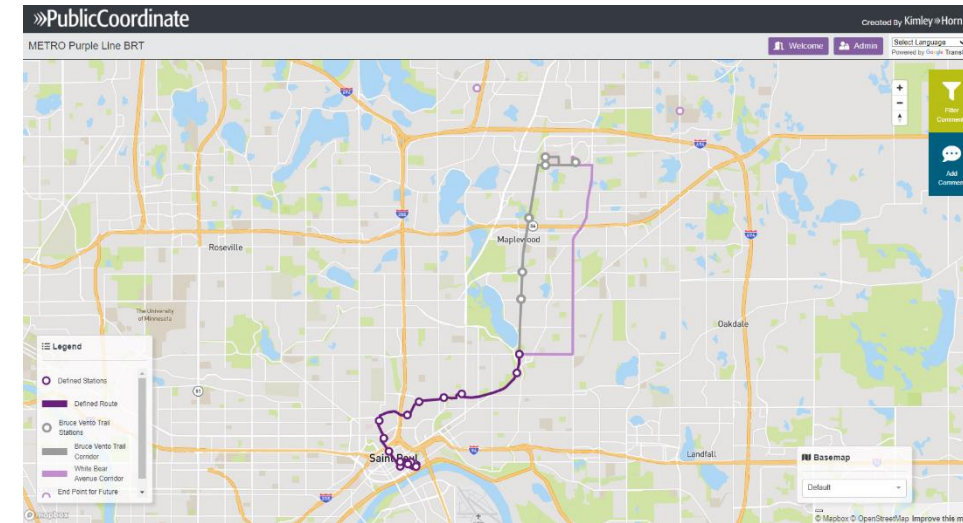
METRO PURPLE LINE: AUTOBÚS DE TRÁNSITO RÁPIDO

Purple Line, una línea de tránsito rápido de autobuses (BRT en sus siglas en inglés) propuesta en el condado de Ramsey se conectará con la expansión del tren ligero y el servicio BRT del sistema METRO, e incluyen las conexiones directas a Green Line, Gold Line, B Line, G Line, y H Line, así como las rutas de autobuses locales. La línea aumentará la accesibilidad a empleos, vivienda y servicios, mejorando el atractivo y la competitividad del área metropolitana del este.

Translated door hanger

“Getting to Know the Corridor” Outreach & Engagement

- Focus is on soliciting feedback on corridor use, challenges, constraints, and opportunities.
- Engagement activities include:
 - Interactive feedback map + promotion
 - Partnering with neighborhood/community and business organizations and groups
 - Pop-ups/community events and canvassing
 - Corridor tours (Stakeholders + Community)
 - Community and Business Advisory Committee (CBAC) and Corridor Management Committee (CMC) engagement



Interactive map

Station Location Outreach & Engagement

- Focused effort to solicit feedback is anticipated to be between **July 24 and August 11**
 - Open Houses (St. Paul, Maplewood, Virtual)
- Will continue to collect feedback after the August 11, but major push for a three-week period
- **Goal:** Outreach results will be shared with Committees for consideration on station locations

What are other strategies for outreach would you like to see?

Maplewood / St. Paul Community Events/Pop-Up Locations

- Maplewood city events:
 - July Celebrate Summer on July 26
 - National Night Out on August 1 (still determining)
 - August Celebrate Summer on August 23
 - Bruentrup Farm – Summer Events
 - Inside Maplewood Mall – Food Court
- St. Paul city events:
 - Payne / Phalen Community Council
 - Hmong Freedom Festival
 - White Bear Ave Business Association Events
 - Farmer's Markets
 - Passive Engagement (libraries, community centers)
 - Move Minnesota Events
 - Greater East Side Events
 - Gladstone Community Center
 - Hmong Village
 - CLUES Events

What are other community events/pop-up locations we should visit?

Maplewood / St. Paul WBA Community Groups

- Maplewood YMCA
- Gladstone Community Center
- Harmony Learning Center
- Hayden Heights Library
- Catholic Charities / Ramsey County Family Service Center
- Minnesota Women's Care
- Churches / Mosques
- Senior Care Facilities
- Schools (Le' Toile Du Nord, Cesar Chavez, Hazel Park)
- Local Rotary
- Hmong Radio Broadcast, Local radio/TV/Podcasts
- Rise, Inc.
- MN Philippine Center

Who are other community groups we should meet with?
Any other feedback?

Maplewood / St. Paul Business Groups

- St. Paul Chamber / Port Authority
- Maplewood Business Council
- Birch Run Station Shopping Center
- M Health Fairview St. John's Hospital
- Maplewood Mall – Ramsey County Resource Center, St. Paul Service Center
- 11th St Hy Vee and Cub (or station)
- Unison
- Hillcrest Shopping Center
- Hazelwood Professional Building
- Businesses along White Bear Avenue (canvassing/door knocking) and WBA Business Association
- ESABA
- CLUES
- Hmong Village
- Hmong Chamber of Commerce
- Latino Economic Development Center

Who are other business groups we should meet with?
Any other feedback?

Maplewood / St. Paul Neighborhoods/Homeowner Groups

- Residences along White Bear Avenue (canvassing/door knocking)
- Sibley Cove Apartments
- The Markham Apartment Complex
- Concordia Arms Apartment Building
- Maplewood Mobile Homes
- Frisbee and English Apartments
- Greater East Side, Payne/Phalen, Oromo Community, Indigenous Youth Council
- Emma Norton Supportive Housing
- Carefree Cottages – Senior Living
- Real Life Senior Housing
- Woodlyn Village
- Public housing on Maryland
- Iowa Hi Rise
- Elders Lodge

Are there neighborhoods/homeowner groups we should meet with?
Any other feedback?

Other Items / Around the Table

Charlie Zelle | CMC Chair

Next Steps & Adjournment

Charlie Zelle | CMC Chair

Upcoming CMC Meetings

- Format: Virtual
- Next meeting:
 - TBD - September
- Subsequent meetings:
 - TBD – scheduled monthly October thru September; occasionally canceled.

CMC Meeting Look Ahead

DATE	TENTATIVE AGENDA TOPICS
TBD – Early September	<ul style="list-style-type: none">Existing Conditions & Corridor Characteristics ReviewPotential Station Locations Staff Recommendation
TBD – Early October	<ul style="list-style-type: none">Most Promising White Bear & Maryland Avenues Design Options for Full Technical Evaluation & Public Engagement

Contact Us

For more information:

www.metrotransit.org/purple-line-project

[Facebook](#) and [Twitter](#) @PurpleLineBRT

Craig Lamothe
Project Manager
(651) 602-1978

craig.lamothe@metrotransit.org

Liz Jones
Community Outreach & Engagement Lead
(651) 602-1977

elizabeth.jones@metrotransit.org