



# METRO Gold Line BRT CMC Meeting

April 4, 2019

- Welcome
- Review Notes from 2/14 Meeting
- Discussion on Project Scope and Cost
- Update on Station Design
- Next Steps
- Adjourn

# Discussion on Project Scope and Costs

# Recap: Project Cost Update



	2016 Estimate	2019 Update
Project Base Scope	\$420.7M	\$415-\$439M*
Total Project Contingency	30%	
Annual Escalation Factor	3.5%	
Opening Year	2024	
Base Year Estimate	2016	2018
Forecast Year	2023	2024

\*Project cost drivers:

- Modified forecast year from 2023 to 2024 (added inflation costs)
- Design refinement through committee process, including platform height
- Bus Propulsion (diesel, hybrid, electric)
- Helmo-Bielenberg Bridge Regional Solicitation funding (cost deduct)
- Right of way
- Updated professional services costs
- Updated finance charges

## 2019 (Second Year of Project Development)

### Project Scope

- **JAN:** Project Partners review 15% Plans & Costs

- **APR-MAY:** CMC recommends project scope and corresponding funding

### Funding

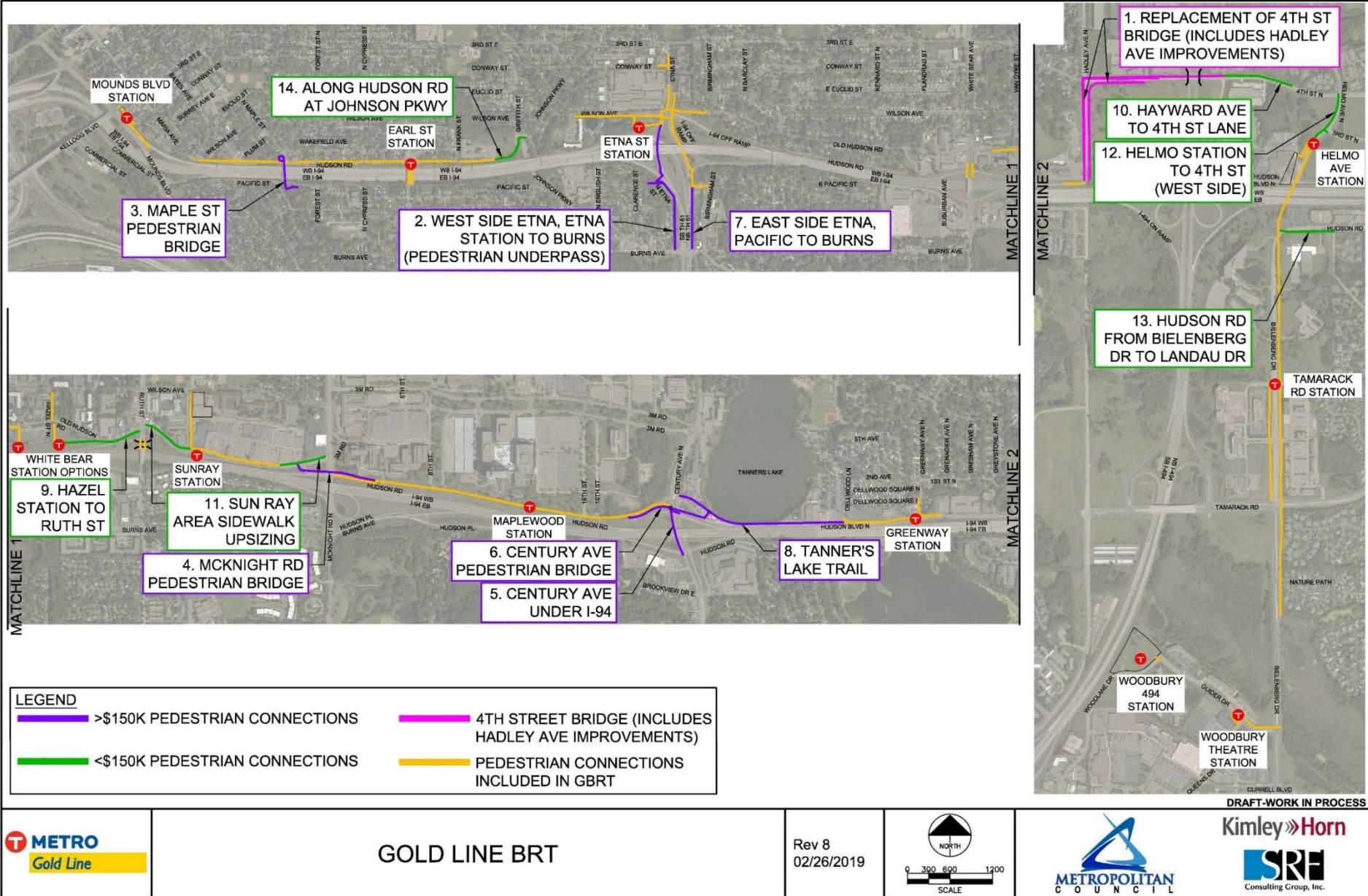
- **JUL-AUG:** Local funding commitments for Engineering phase
- **AUG:** Prepare cost estimate for New Starts application

### FTA-New Starts

- **SEPT:** Request New Starts rating from FTA
- **NOV-JAN:** Prepare & apply to enter New Starts Engineering phase
- **JAN:** Anticipated Environmental Decision Document



# Recap: Scope Requests



# Recap: Scope Requests



	Estimated Cost
Project Base Scope	\$415-439M
<b>Scope Requests - Bridge/Roadway:</b>	
1. 4th Street Bridge & Roadway Improvements	+\$10.3M
<b>Scope Requests - Ped Connections:</b>	
2. West Side Etna - Etna Station to Burns (tunnel)	+\$6.0M
3. Maple Ped Bridge	+\$4.8M
4. McKnight Bridge (on structure)	+\$3.3M
5. Century Avenue at-grade underpass of I-94	+\$1.2M
6. Century Ave Bridge (on structure)	+\$1.0M
7. East Side Etna - Pacific to Burns	+\$370K
8. Tanner's Lake	+\$240K
9. Hazel Station Area to Ruth	+\$120K
10. Hayward Ave to 4th Street Lane	+\$100K
11. Sun Ray Area existing sidewalk upsizing	+\$80K
12. Helmo Station to 4th Street, West Side	+\$60K
13. Hudson Road from Bielenberg to Landau Drive	+\$60K
14. Along Hudson at Johnson Parkway	+\$40K

- Continued strong support for adding scope requests
- Ongoing evaluation of scope requests
  - Exploration of technical issues, risks and options
  - Project partner funding considerations
- Input received from:
  - Gold Line Project Management Team
  - Gold Line Community/Business Advisory Committee (CBAC)
  - Gold Line Technical Advisory Committee (TAC)
  - Washington and Ramsey County Commissioners



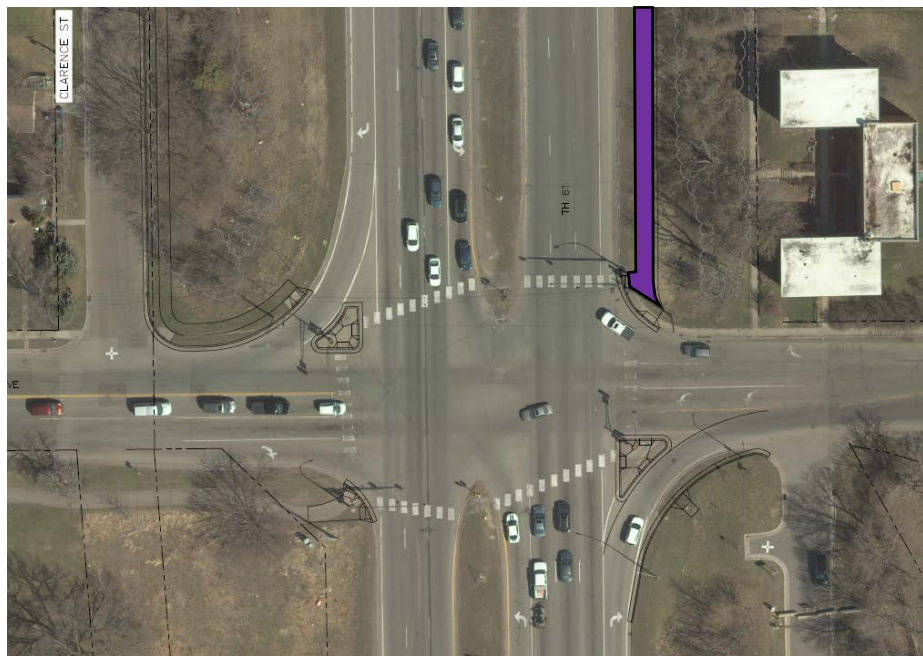
- 4<sup>th</sup> Street Bridge and Roadway Improvements (\$10.3M)
  - Center left turn lanes on Hadley Ave separated from 4th Street Bridge and Roadway
  - Bridge, center-running guideway & trails = \$9.85M
  - Center left turn lanes on Hadley Ave = \$450K
    - Would advance as FTA-eligible “local work”
    - Local match paid by Oakdale
    - Design and construction delivered by Gold Line Project
    - Oakdale’s Capital Improvement Plan (CIP) includes funding for design and construction



- West Etna Trail and Tunnel (\$6M)
  - Relatively high cost
  - Safety/security concerns raised by CBAC, TAC, and other stakeholders
  - Risk with large fiber optic trunk line (MnIT)
  - Tunnel/trail ownership & maintenance significant, unresolved



- West Etna Trail and Tunnel, continued
  - Other opportunities:
    - Beyond project - existing sidewalk network and 2020 Johnson Parkway Trail Project to improve connection across I-94
    - Within project - expand East Etna connection work (estimated \$370K) to include some ADA improvements at Burns Avenue/TH 61 (~\$500K/TBD)



Trunk Highway 61 and Burns Ave Intersection

- Hadley Ave center left turn lanes, local share by Oakdale (\$450K)
- Eliminate West Etna Ped Connection (\$6M) from consideration and provide a safe connection east of Etna, including some ADA-related improvements at Highway 61/Burns Ave
  - MnDOT and St. Paul discussions still underway for potential future improvements at intersection
  - Limits and extent of Gold Line intersection improvements to be determined
  - Additional local funding or other project(s) may be required

# Scope Requests- Current Status



## Estimated Cost

	Estimated Cost
Project Base Scope	\$415-439M
<b>Scope Requests - Bridge/Roadway:</b>	
1a. 4th Street Bridge/Roadway Improvements (Hadley center turn lanes removed)	+\$9.85M
1b. Hadley Ave center left turn lanes (local match to be paid by City of Oakdale)	+\$450K
<b>Scope Requests - Ped Connections:</b>	
<del>2. West Side Etna - Etna Station to Burns (tunnel)</del>	<del>+\$6.0M</del>
3. Maple Ped Bridge	+\$4.8M
4. McKnight Bridge (on structure)	+\$3.3M
5. Century Avenue at-grade underpass of I-94	+\$1.2M
6. Century Ave Bridge (on structure)	+\$1.0M
7. East Side Etna - Pacific to Burns (\$370K+ \$500K 61/Burns intersection improvements)	+\$870K
8. Tanner's Lake	+\$240K
9. Hazel Station Area to Ruth	+\$120K
10. Hayward Ave to 4th Street Lane	+\$100K
11. Sun Ray Area existing sidewalk upsizing	+\$80K
12. Helmo Station to 4th Street, West Side	+\$60K
13. Hudson Road from Bielenberg to Landau Drive	+\$60K
14. Along Hudson at Johnson Parkway	+\$40K



## Potential Action #1 at May CMC Meeting:

“The CMC recommends continuing design advancement for up to \$439M of Gold Line BRT project base scope.”

- Formal recommendation of the project budget will occur prior to applying for New Starts Engineering phase (late 2019/early 2020)

## Potential Action #2 at May CMC Meeting:

- Addition of scope requests
- Planned funding for scope requests

# CMC Discussion

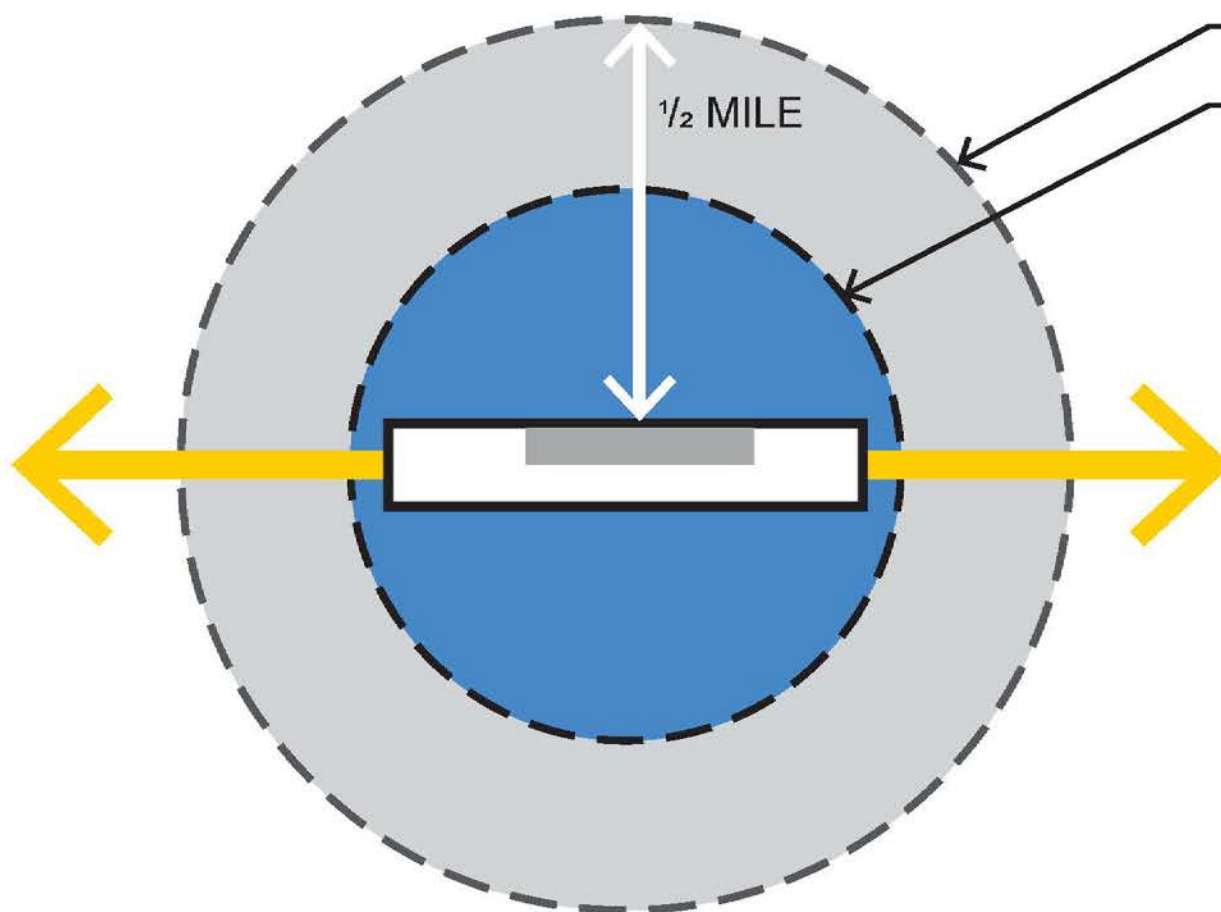
# Update on Station Design

- Outreach Activities (Q1/Q2, 2019)
- Station Workshops with DARTs (Q2, 2019)
- CBAC Input (Q2, 2019)
- Station Area Design Advancement to inform 30% costs (Q2-Q4, 2019)
- Shelter Concepts (Q1 2020)

- **Identity:** consistent and recognizable Gold Line BRT
- **Safety & Comfort:** prioritize physical protection, well lit stations, and open site lines to and from stations
- **Connectivity:** emphasize visual and physical connections with logical pedestrian movements
- **Context:** complement and minimize effects to natural landscape features and historical resources
- **Resiliency:** durable and maintainable materials



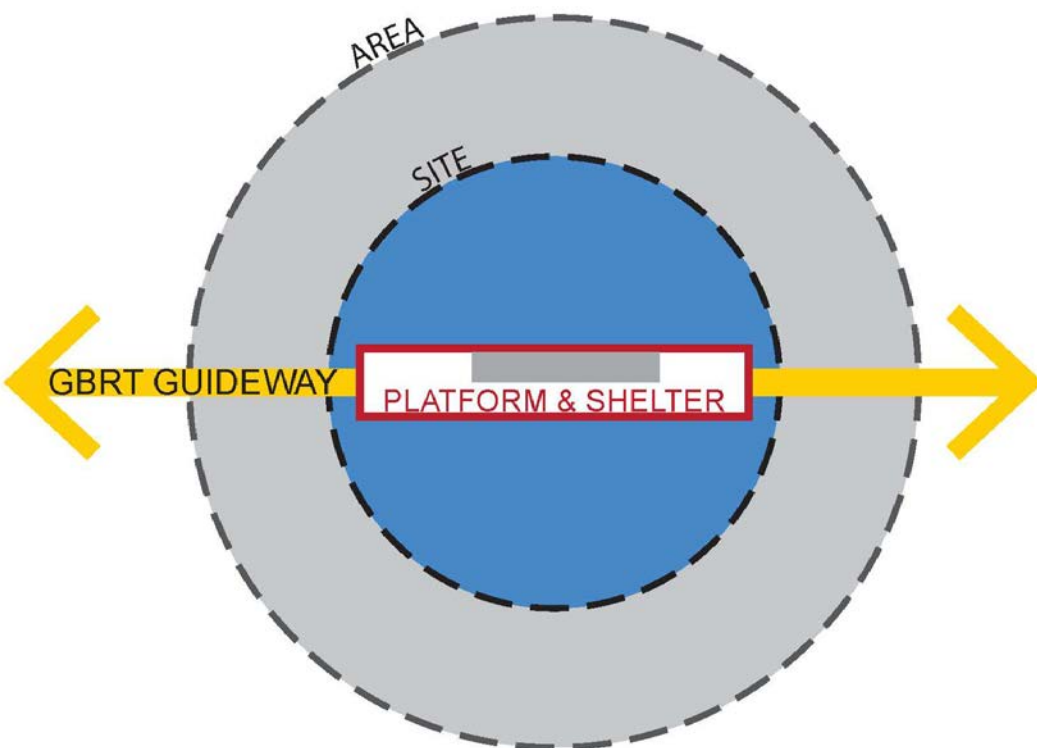
## STATION ZONES



AREA

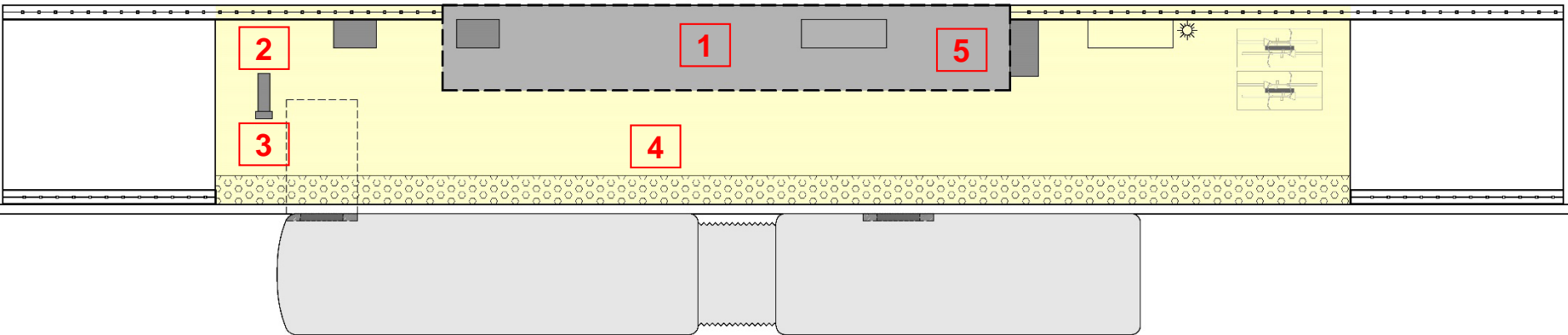
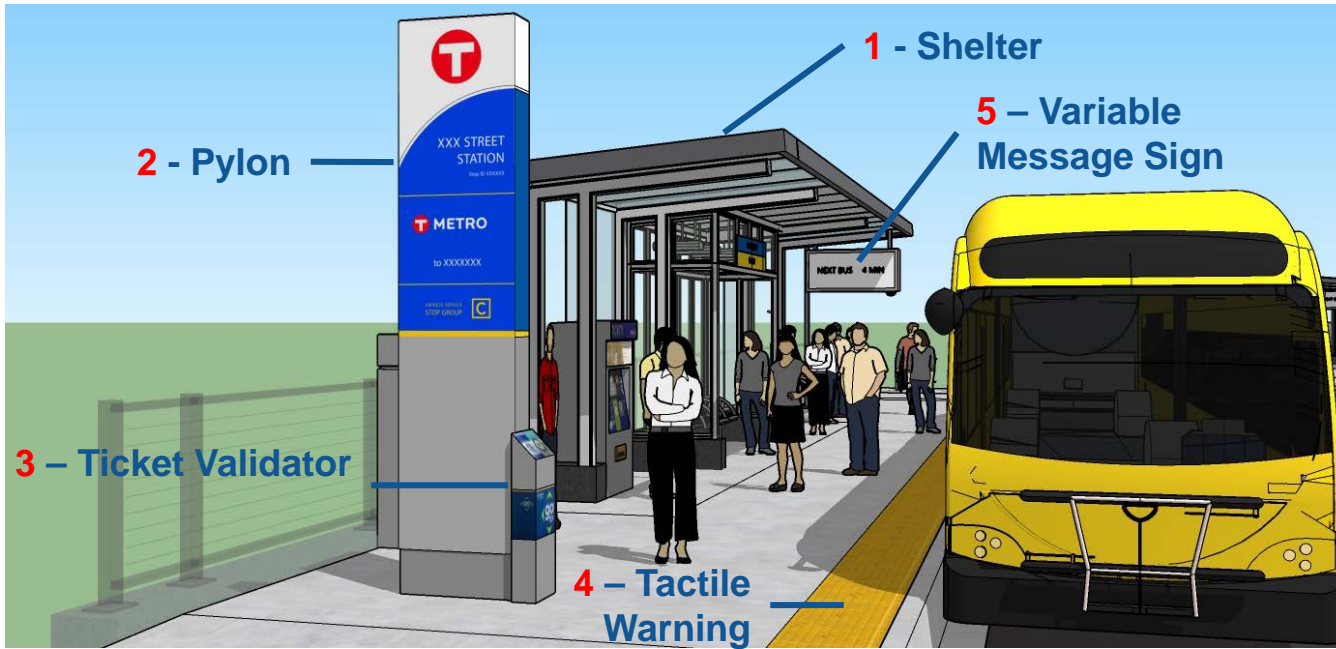
### GBRT SCOPE

- SITE
- PLATFORM (INCLUDES SHELTER)
- GUIDEWAY



- Provide a consistent customer experience from station to station
- Metro Transit owned and maintained facilities

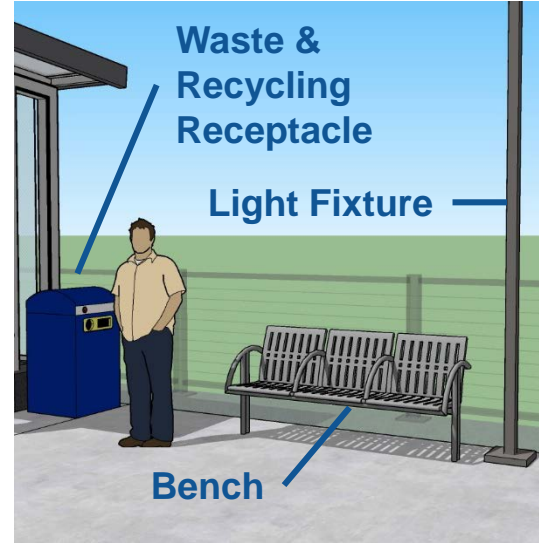
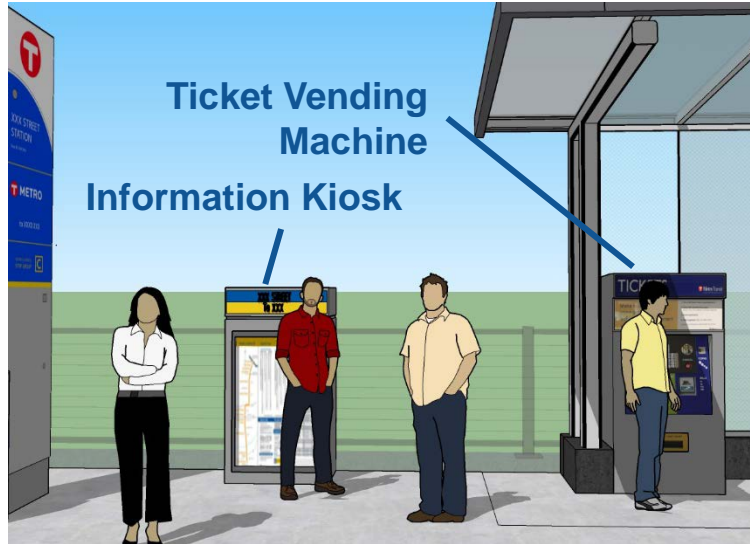
# BRT Platform Elements



Typical GBRT Platform

14' x 80'  
21

# BRT Platform Elements



Variable Message Sign (VMS)  
(METRO Green Line Shown)



Platform Light & Heaters  
(A Line Shown)



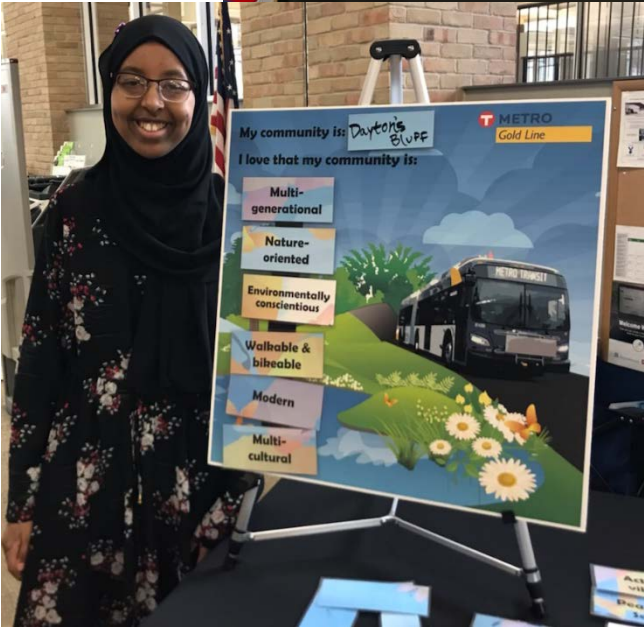
Emergency Telephone  
(A Line Shown)



Security Camera  
(A Line Shown)

- Intent is to inform designers of what is important to each community before they start designing
- Summarized all previous outreach
- Online survey – open until April 19
- In-Person Pop-Up Meetings and Presentations
  - Rice Park Association Meeting: March 6
  - Oakdale Indoor Market: March 16
  - Greenway Station Area Planning Meeting: March 21
  - Dayton's Bluff Library at Metro State University: March 27
  - Woodbury Community EXPO at East Ridge High School: March 30
  - Ha Tien Supermarket in Saint Paul: April 3
  - Wilson Hi Rise in Saint Paul: April 9
  - Saint Paul Farmers' Market: April 13
  - Sun Ray Transit Center: April 17





METRO Gold Line BRT

T METRO Gold Line

Station Design

WE NEED YOUR FEEDBACK!

Gold Line stations will have shelters with comfortable waiting space and a variety of amenities: NexTrip real-time departure signs, raised platforms, maps, benches, heat, lighting, bike racks, trash and recycling bins, ticket machines, enhanced security with cameras and emergency telephones.

What other station amenities or features would make your Gold Line experience better?

Note: Full funding for every station feature listed below is not included in the current Gold Line project budget. Funding for these features may be provided in the future by the corridor cities or other local sources.

Designated vehicle drop-off & pick-up zone	Secure bicycle parking
Bicycle tune-up station	Wayfinding signage to local institutions & attractions
Landscaping & greenery	Public art
Wi-Fi hotspot	USB charging port or convenience outlet
Other	

# CMC Next Steps

- Next scheduled CMC meeting is May 2
  - Recommendation on project base scope
  - Recommendation on additional scope requests
- June 6 meeting agenda topics to be discussed
- July 4 meeting will be cancelled