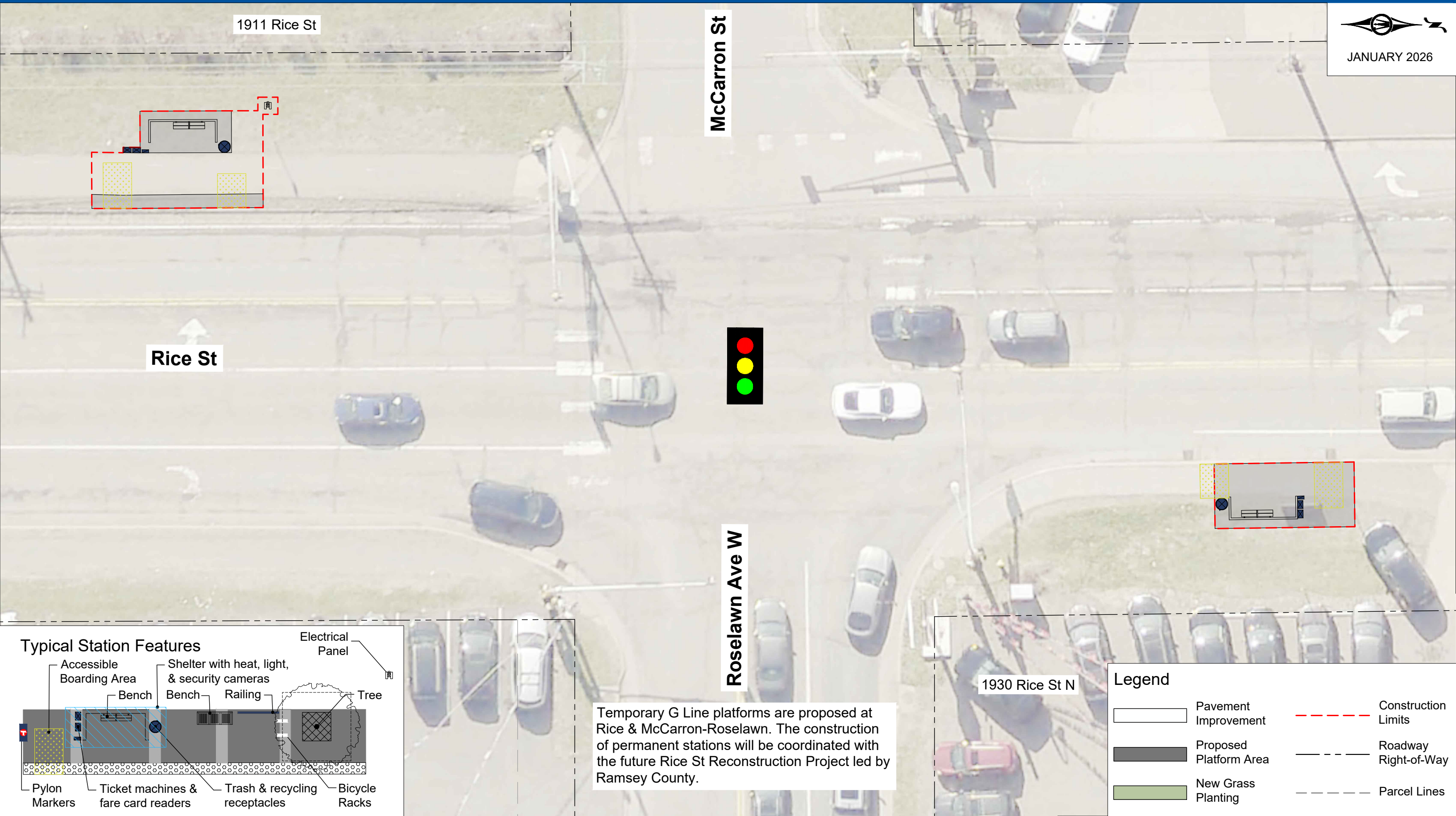
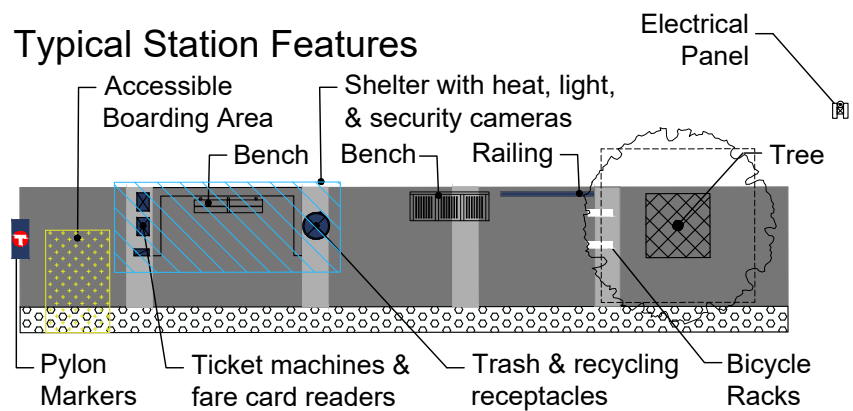




JANUARY 2026



Typical Station Features



Temporary G Line platforms are proposed at Rice & McCarron-Roselawn. The construction of permanent stations will be coordinated with the future Rice St Reconstruction Project led by Ramsey County.

Legend

	Pavement Improvement		Construction Limits
	Proposed Platform Area		Roadway Right-of-Way
	New Grass Planting		Parcel Lines