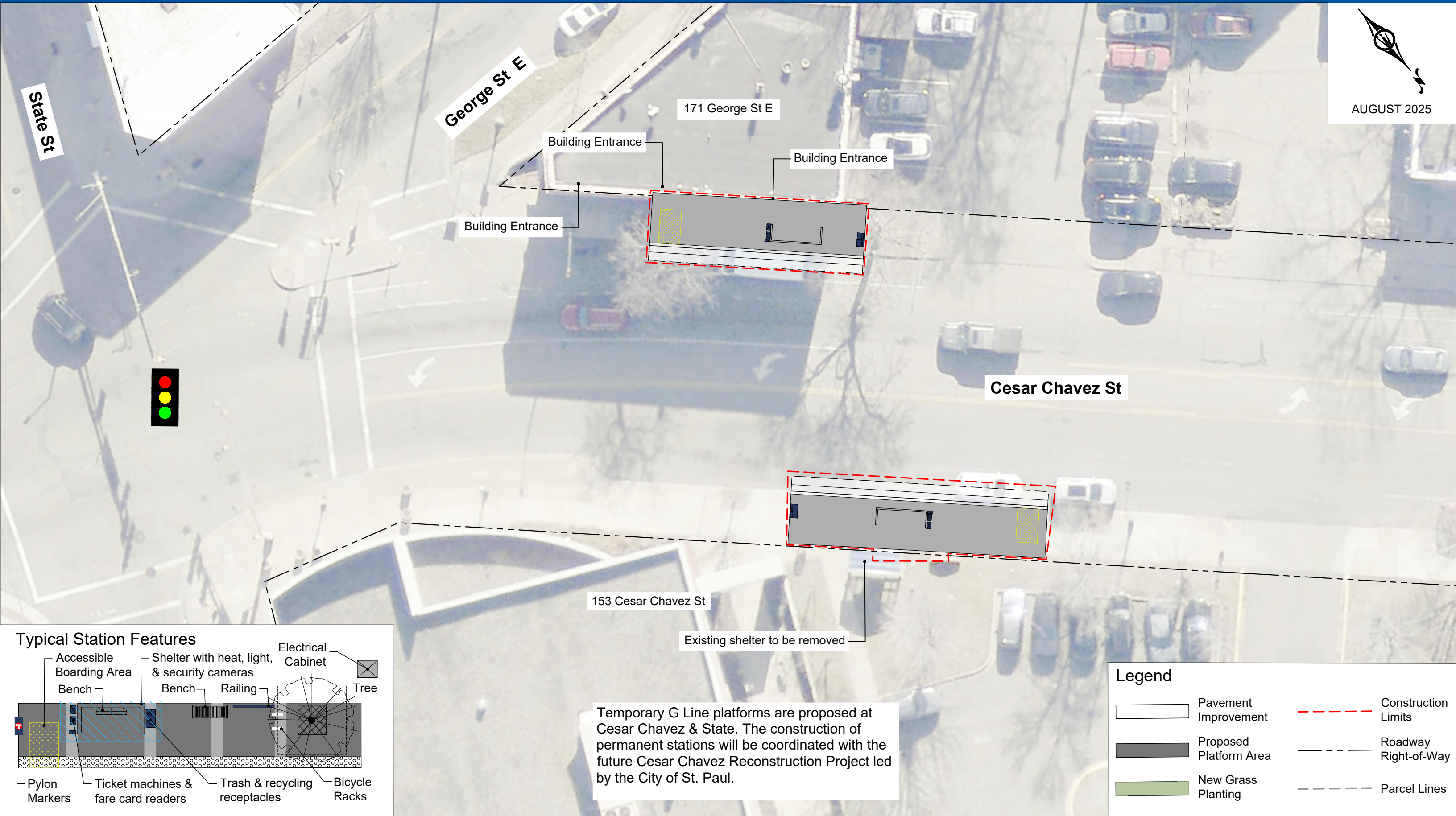
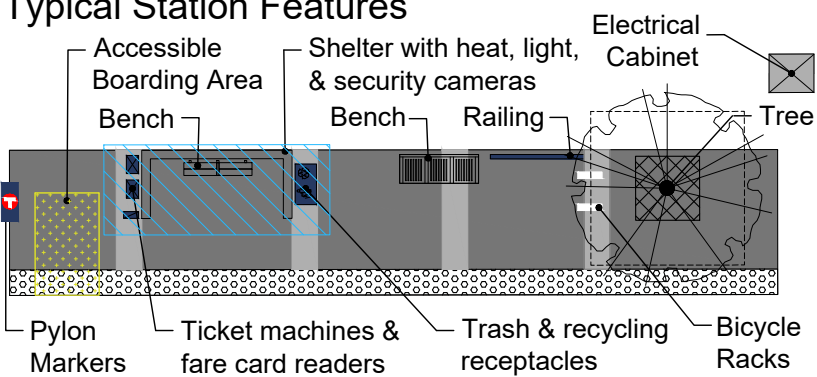




AUGUST 2025







Typical Station Features



Temporary G Line platforms are proposed at Cesar Chavez & State. The construction of permanent stations will be coordinated with the future Cesar Chavez Reconstruction Project led by the City of St. Paul.

Legend

	Pavement Improvement		Construction Limits
	Proposed Platform Area		Roadway Right-of-Way
	New Grass Planting		Parcel Lines