



METRO F Line – Recommended Corridor Plan

Windom Park Citizens in Action, | May 16, 2023
Nasser Mussa, Community Outreach Coordinator

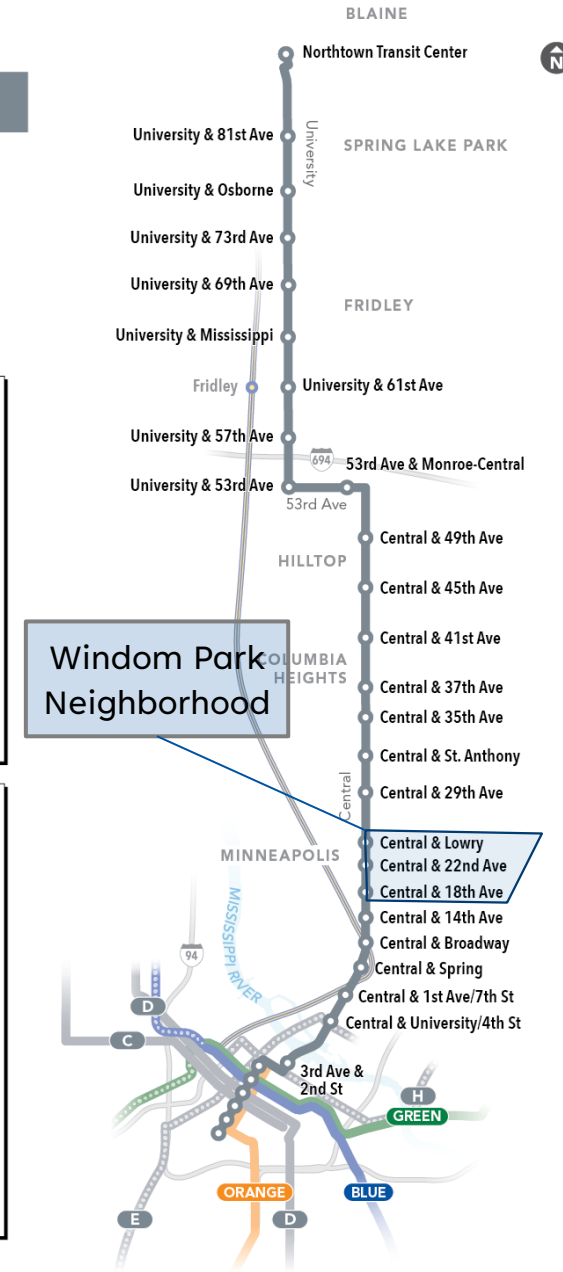
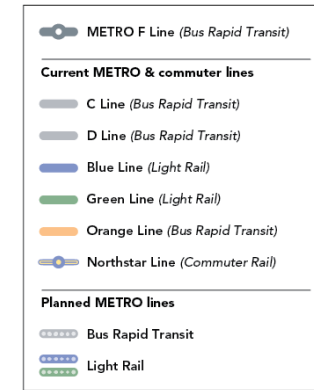


METRO F Line Bus Rapid Transit

- Faster, frequent, all-day service
- 13-mile corridor from downtown Minneapolis to Northtown Transit Center
- Substantial upgrade to Route 10
 - F Line will be the primary service on Central in Minneapolis
- Improved speed and reliability
- Serve all-day, all-purpose trips
- Planned 32 stations with enhanced features
 - 3 proposed on border of neighborhood
- Targeted opening in 2026



March 2023



Arterial BRT: Designed to be faster, more reliable, and easy to use

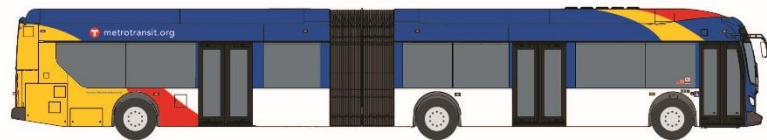


1/8 mile between stops



1/3 to 1/2 mile between stations

2-3 stations per mile for
faster trips



Higher-capacity buses &
boarding through all doors



High-tech, high-amenity,
secure stations



Pre-boarding fare
payment for faster stops



Bus priority signals & lanes



Faster, frequent, all-day service

What will F Line stations look like?



A **Pylon markers** help riders identify stations from a distance.

B **Real-time NexTrip signs** provide bus information, and on-demand **annunciators** speak this information for people with low vision.

C **Shelters** provide weather protection and feature push-button, on-demand **heaters** and shelter **lighting**. Shelter sizes will vary based on customer demand (small shown here).

D **Ticket machines** and **fare card readers** collect all payment before customers board the bus.

E **Emergency telephones** provide a direct connection to Metro Transit police. Stations also feature **security cameras**.

F Stations feature **trash and recycling** containers.

G Platform edges are marked with a cast-iron **textured warning strip** to keep passengers safely away from the curb while the bus approaches. Many stations also feature **raised curbs** for easier boarding.

H **Platform areas** are distinguished by a dark gray concrete pattern.

I **Benches** at stations provide a place to sit.

J Most stations have **bike parking**.

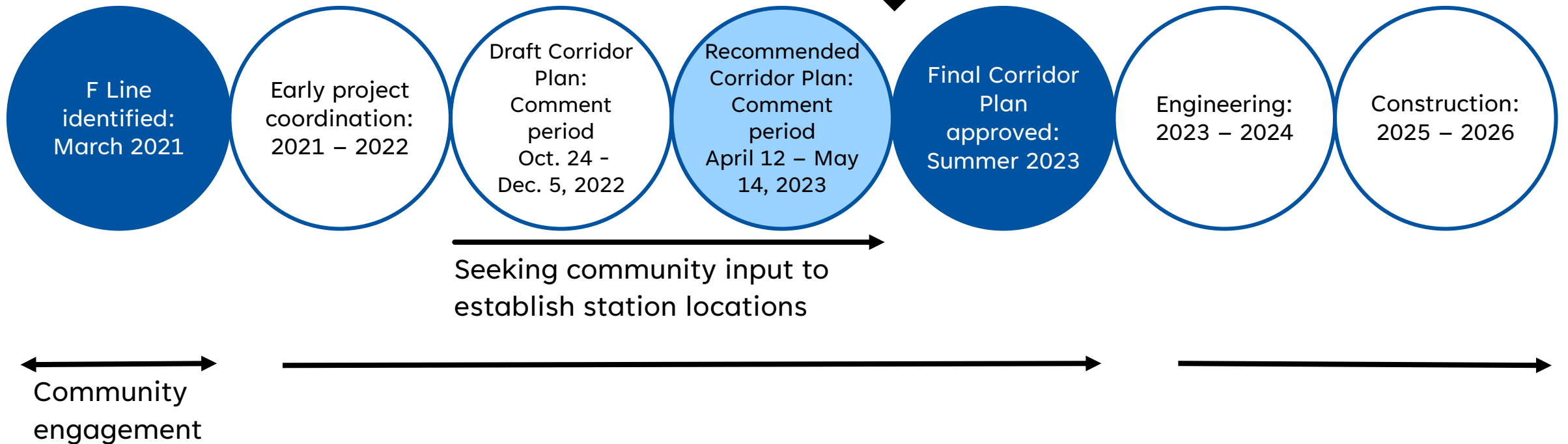
At some stations, **railings** separate the platform from the sidewalk.

Some stations have pedestrian-scale **light fixtures** to provide a safe, well-lit environment.

Project schedule

Planning phase

We are here



Project partners



Recommended Corridor Plan engagement

- Collecting feedback
 - Public comment period: April 12 – May 14
 - Survey at metrotransit.org/f-line-project
 - FLine@metrotransit.org, 651-829-5305
- Meeting people in community
 - Door knocking
 - At bus stops, aboard buses
 - Neighborhoods and community groups
 - Staff at libraries and other public places
- Postcards, email subscriptions, social media
- Translation: English, Spanish, Somali, Hmong, Oromo, and Arabic



Bus rapid transit is coming to Route 10 in 2026

COMMENT NOW!
metrotransit.org/F-Line-Project



Se avecinan cambios en la Ruta 10 en 2026. Metro Transit planea la ubicación de las estaciones de la línea F. ¡Comparta sus opiniones!

2026 yuuv muaj Kev hloov rau Npav 10. Metro Transit tabtom npaj Npav F cov chaw samthiaj tos. Thov qhia seb nej xav li cas!

Isbeddelo ayaa ku imanaya Jidka 10 sannadka 2026. Metro Transit waxa ay qorshaynaysaa goobaha Saldhigga leen F. La wadaag ra'yiciintaada!

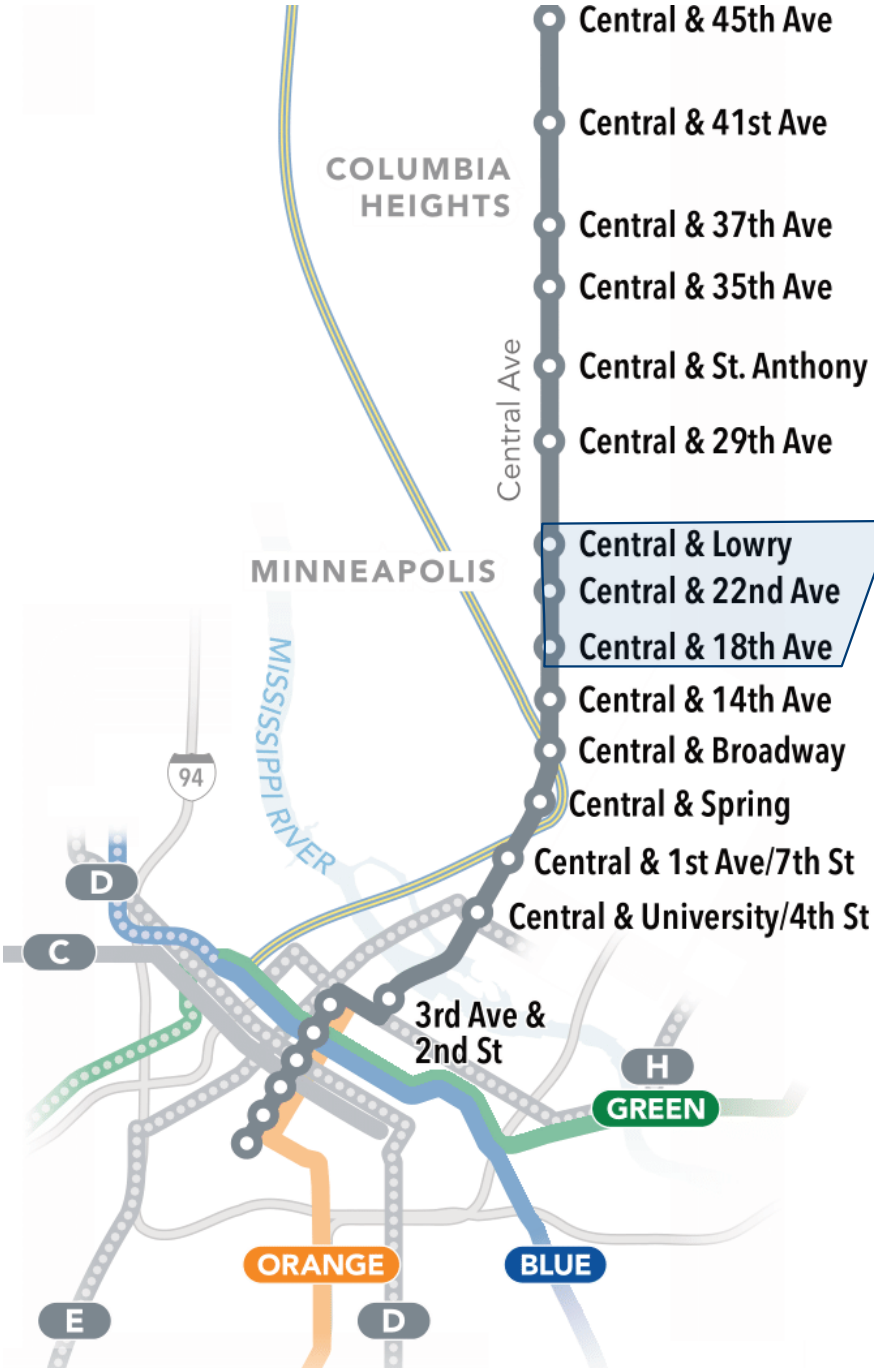
قواعد Metro Transit طوطح 2026 يف 10 راسم یراج تارییعت آرطتس

Jijjiramoota bara 2026 keessa Daandii 10ffaatti dhufaa jiran. Meetiroo Tiraanzit bakkeewwan Buufata Toora F karoorasaa jira. Duubdeebii keessan nuuf qoodaal



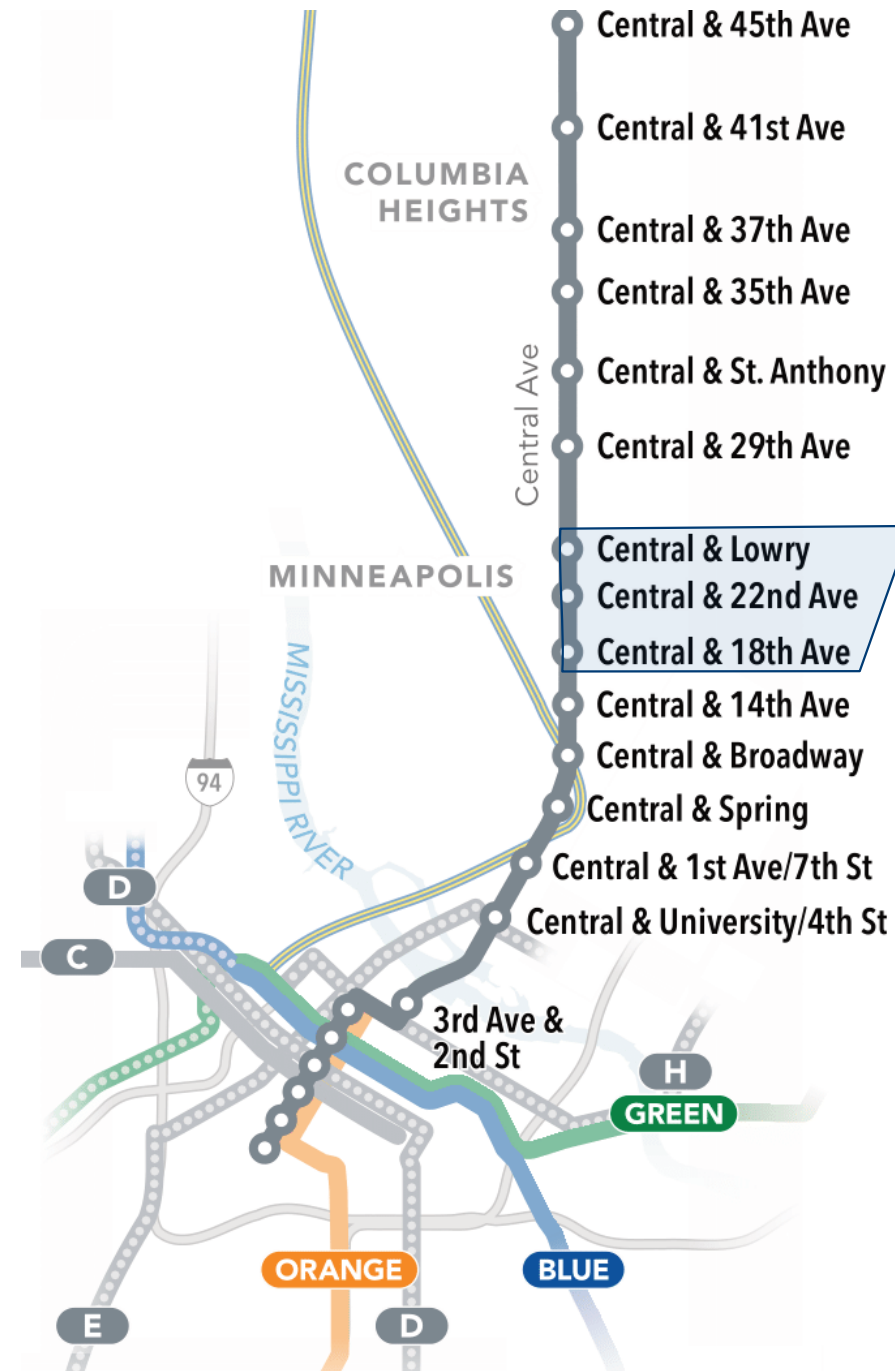
Station locations

- 3 new stations proposed on Central in the Windom Park neighborhood
- In the neighborhood (18th Ave to Lowry)...



Station location considerations

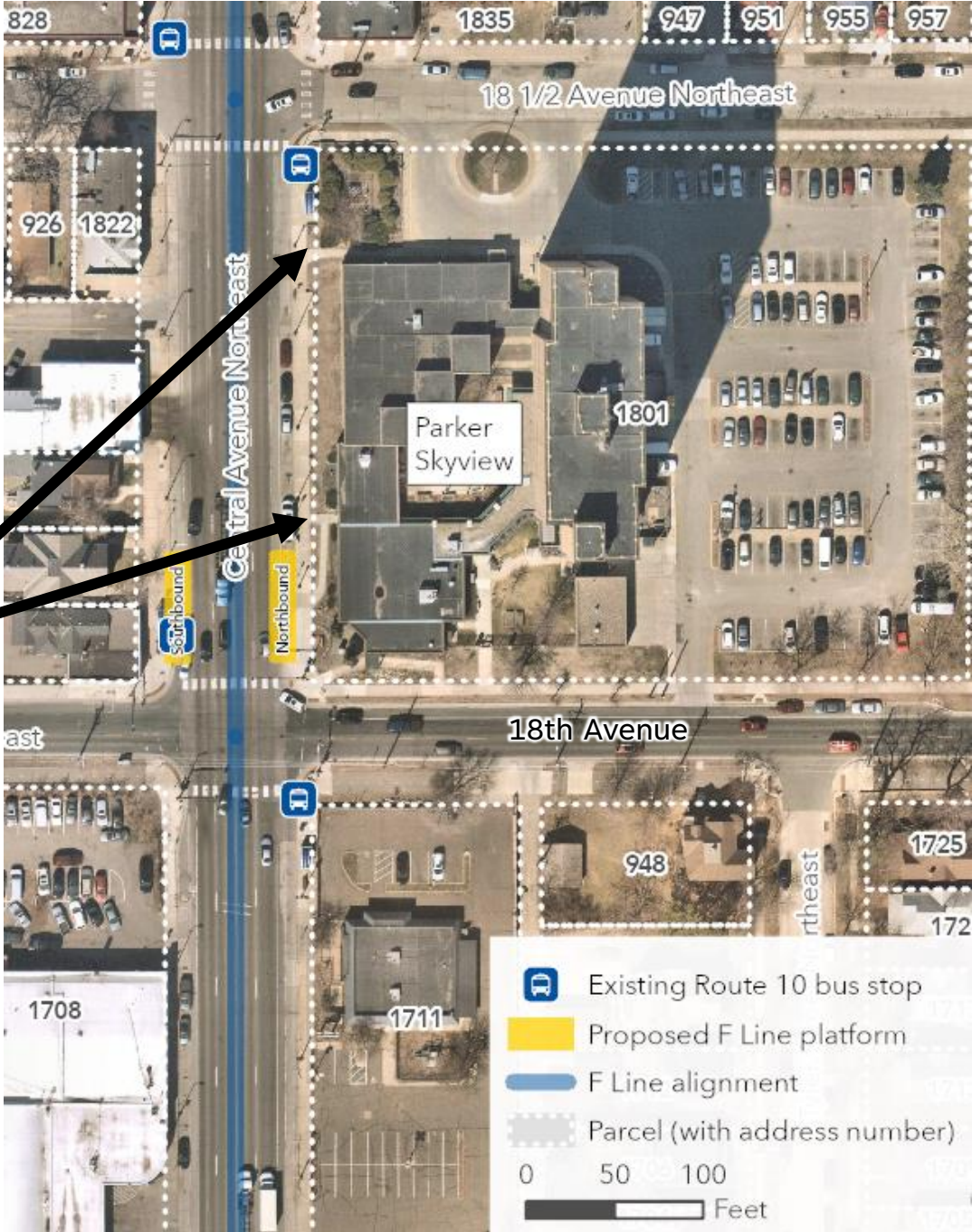
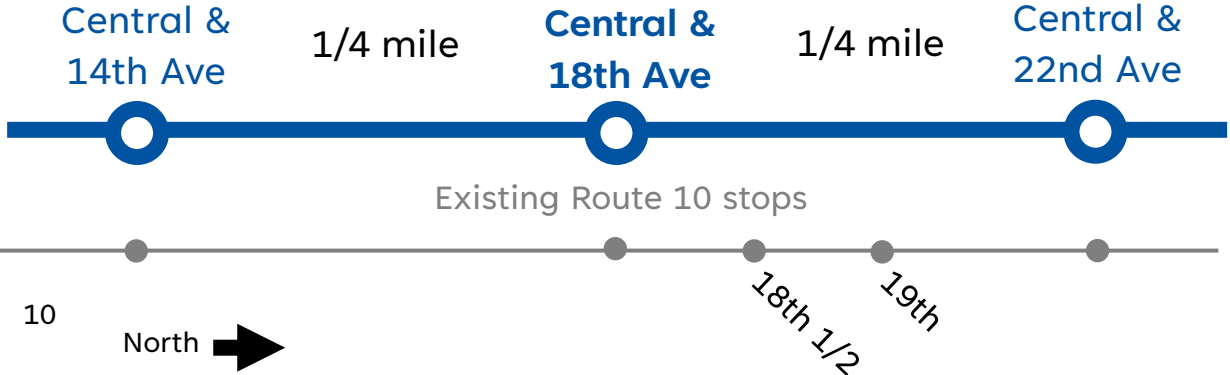
- Pedestrian safety and environment
- Land use and access to destinations
- Spacing between stations
- Existing ridership
- Connecting transit service
- Community input
- Transit speed and reliability
- Street design and available right-of-way



Central & 18th Ave

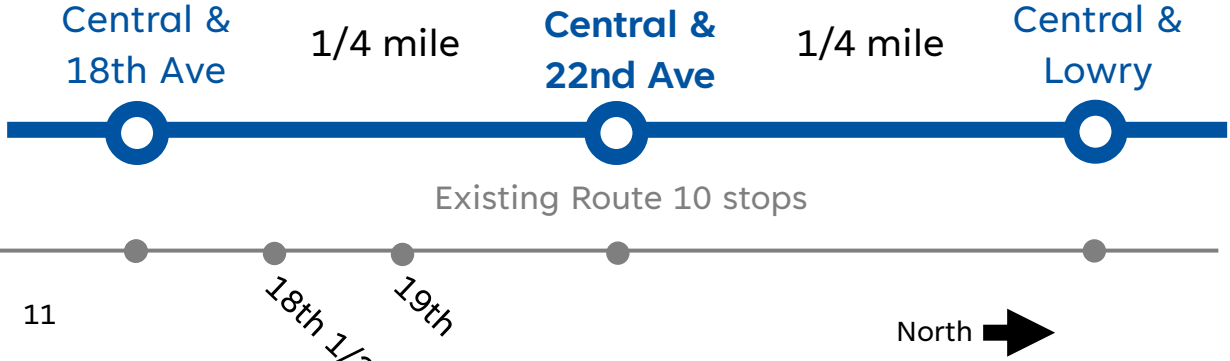
- Proposed **southbound** platform location at **existing** Route 10 bus stop
- Proposed **northbound** platform location **differs** from existing Route 10 bus stop
- Parker Skyview
- Coordination with MnDOT, City, County

Entrances



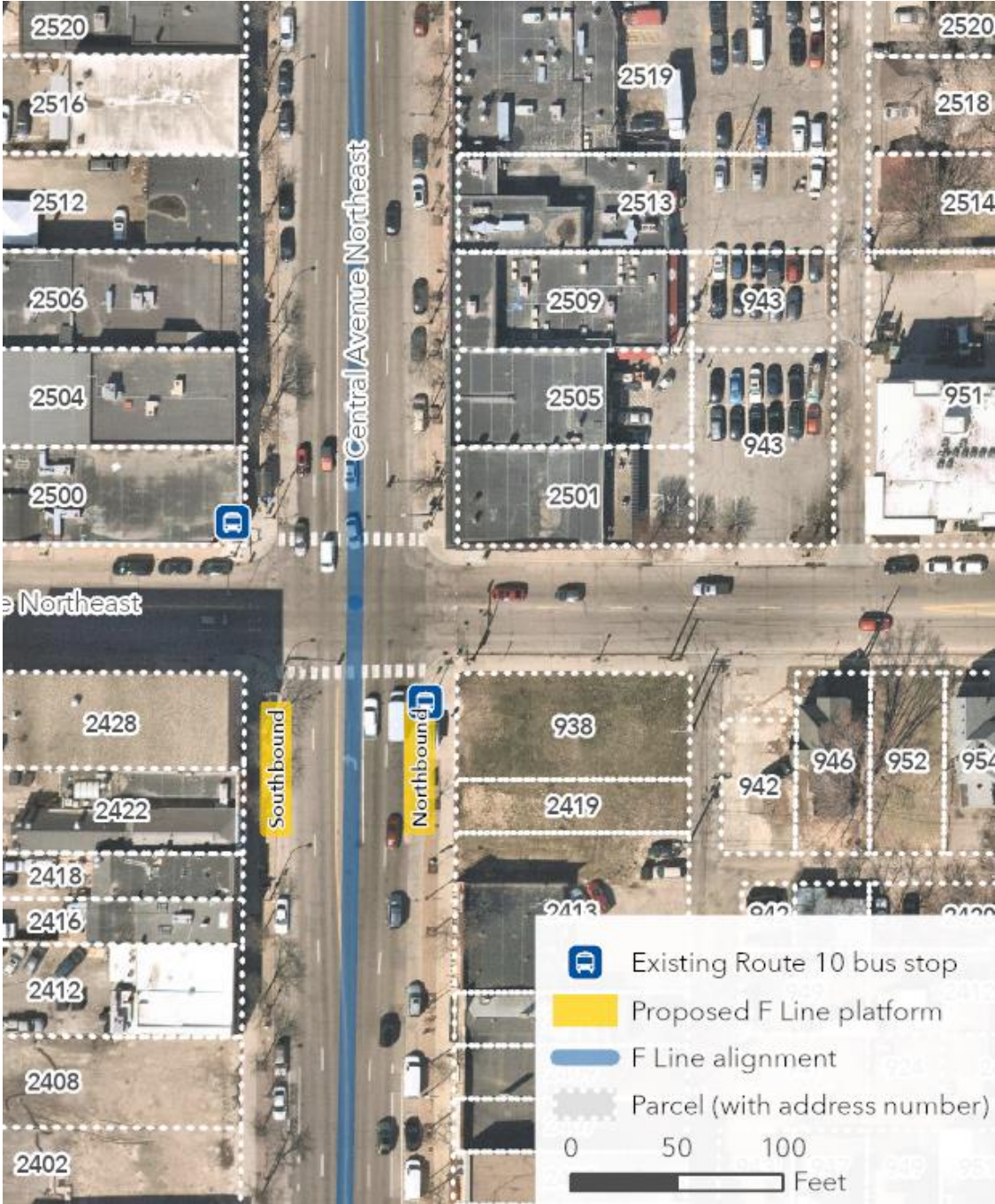
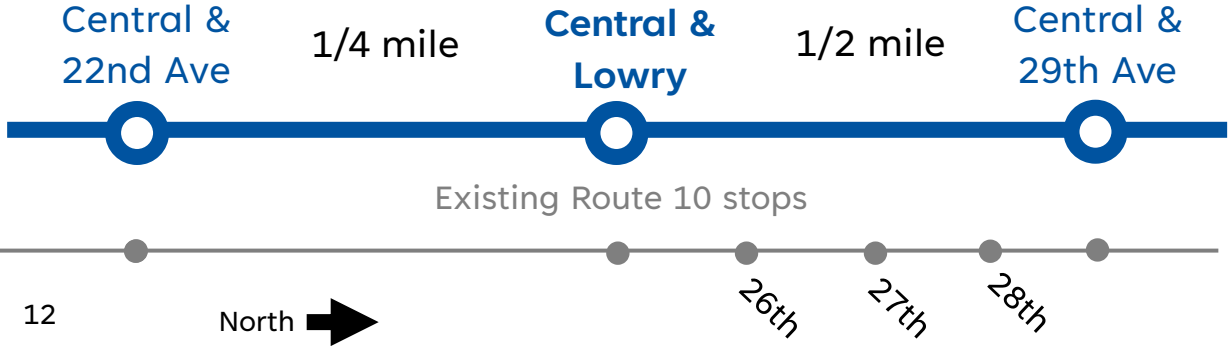
Central & 22nd Ave

- Proposed platform locations are at existing Route 10 bus stops
- New Boston Square
- Edison High School two blocks west
- Coordination with MnDOT, City, County



Central & Lowry

- Proposed **northbound** platform location at **existing** Route 10 bus stop
 - City-owned parcel at SE corner provides flexibility
- Proposed **southbound** platform location **differs** from existing Route 10 bus stop
 - Speed and reliability benefits
- Transfers to Route 32 on Lowry
- Coordination with MnDOT, City, County
 - Lowry Avenue corridor improvements



Help us plan F Line station locations

- metrotransit.org/f-line-project
- Review the Recommended Corridor Plan and share your feedback
 - Email FLine@metrotransit.org
 - Call 651-829-5305
- Sign up for the F Line Update newsletter



Thank You!

Nasser Mussa

Community Outreach Coordinator

nasser.mussa@metrotransit.org