



METRO F Line – Draft Corridor Plan

Logan Park Neighborhood Association | November 16, 2022

Nasser Mussa, Community Outreach Coordinator

Jake Knight, Senior Planner, Arterial BRT



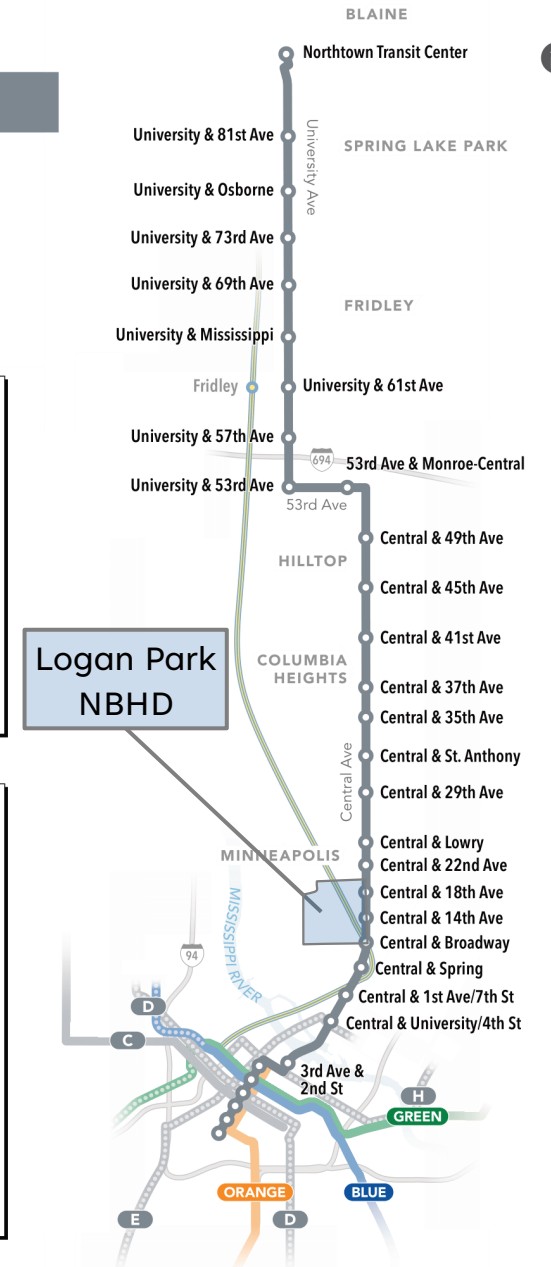
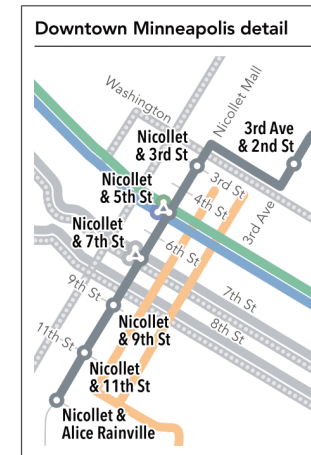
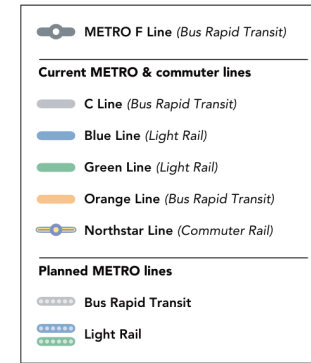


METRO F Line Bus Rapid Transit

- Fast, frequent, all-day service
- 13-mile corridor from Northtown Transit Center to downtown Minneapolis
- Substantial upgrade to Route 10, one of the region's highest-ridership bus routes
- 32 stations with enhanced features
 - 3 proposed on Central Ave in the Logan Park neighborhood
- Targeted opening in 2026



metrotransit.org/f-line-project

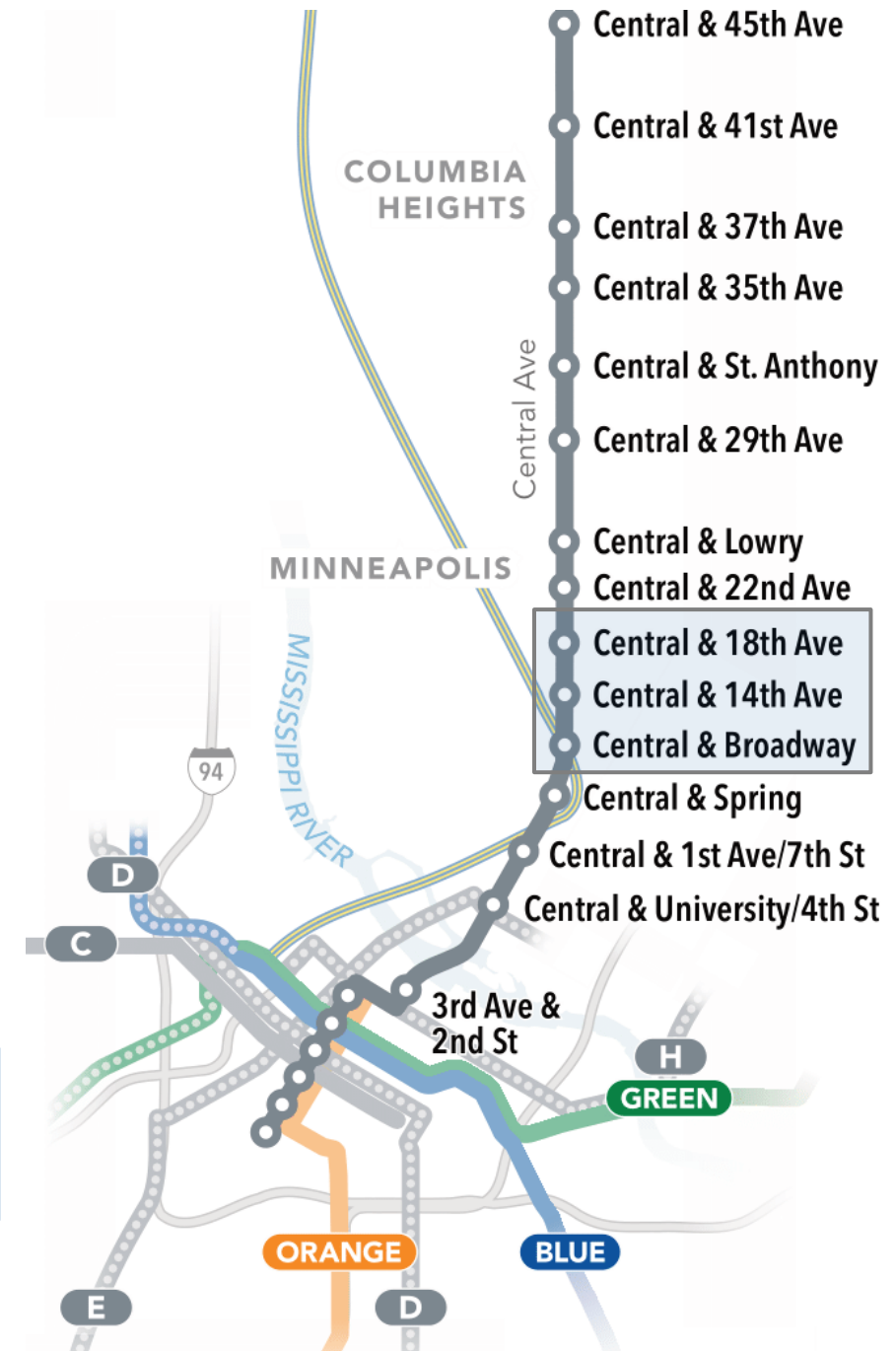


METRO F Line Bus Rapid Transit

- Fast, frequent, all-day service
- 13-mile corridor from Northtown Transit Center to downtown Minneapolis
- Substantial upgrade to Route 10, one of the region's highest-ridership bus routes
- 32 stations with enhanced features
 - 3 proposed on Central Ave in the Logan Park neighborhood
- Targeted opening in 2026



metrotransit.org/f-line-project



Arterial bus rapid transit (BRT)

metrotransit.org/brt



2-3 stations per mile for faster stops

High-tech, high-amenity, secure stations

Pre-boarding fare payment for faster stops

Higher-capacity buses & boarding through all doors

Bus priority signals & lanes

Faster, frequent, all-day service



What will F Line stations look like?



A **Pylon markers** help riders identify stations from a distance.

B **Real-time NexTrip signs** provide bus information, and on-demand **annunciators** speak this information for people with low vision.

C **Shelters** provide weather protection and feature push-button, on-demand **heaters** and shelter **lighting**. Shelter sizes will vary based on customer demand (small shown here).

D **Ticket machines** and **fare card readers** collect all payment before customers board the bus.

E **Emergency telephones** provide a direct connection to Metro Transit police. Stations also feature **security cameras**.

F Stations feature **trash and recycling** containers.

G Platform edges are marked with a cast-iron **textured warning strip** to keep passengers safely away from the curb while the bus approaches. Many stations also feature **raised curbs** for easier boarding.

H **Platform areas** are distinguished by a dark gray concrete pattern.

I **Benches** at stations provide a place to sit.

J Most stations have **bike parking**.

At some stations, **railings** separate the platform from the sidewalk.

Some stations have pedestrian-scale **light fixtures** to provide a safe, well-lit environment.

Project schedule

- Currently seeking **community input** to establish **station locations** prior to the Engineering phase
- Community engagement will continue through the Engineering and Construction phases



Project partners



Coordination with other projects

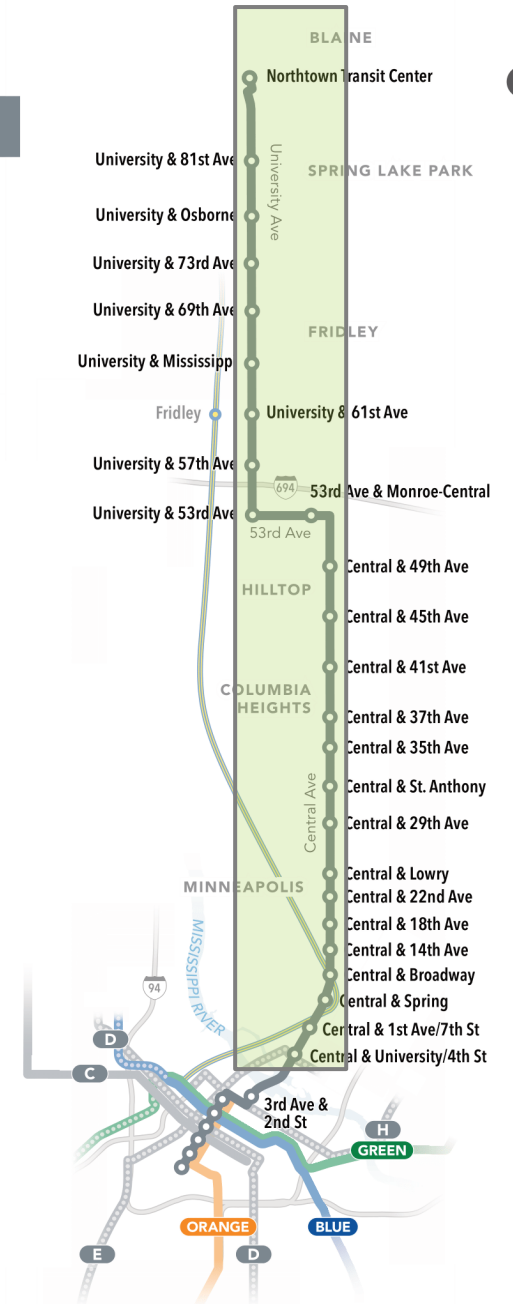
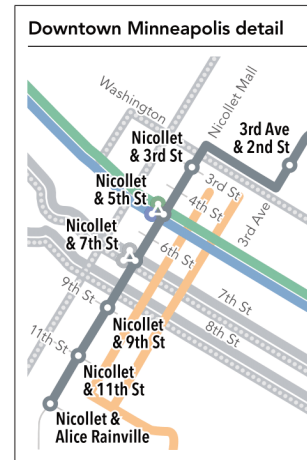
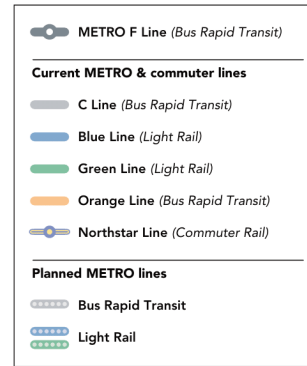
- Coordinating design with several projects from agency partners
- MnDOT: Hwy 47 and Hwy 65 Planning and Environmental Linkages (PEL) Study
 - Evaluating broader multimodal alternatives to improve safety and mobility
 - Higher-level concepts, narrowing options
 - Timing of project outcomes uncertain
 - Close collaboration to ensure compatibility

Learn more about MnDOT's PEL Study
talk.dot.state.mn.us/hwy-47-hwy-65-study



F Line

MnDOT PEL Study Area



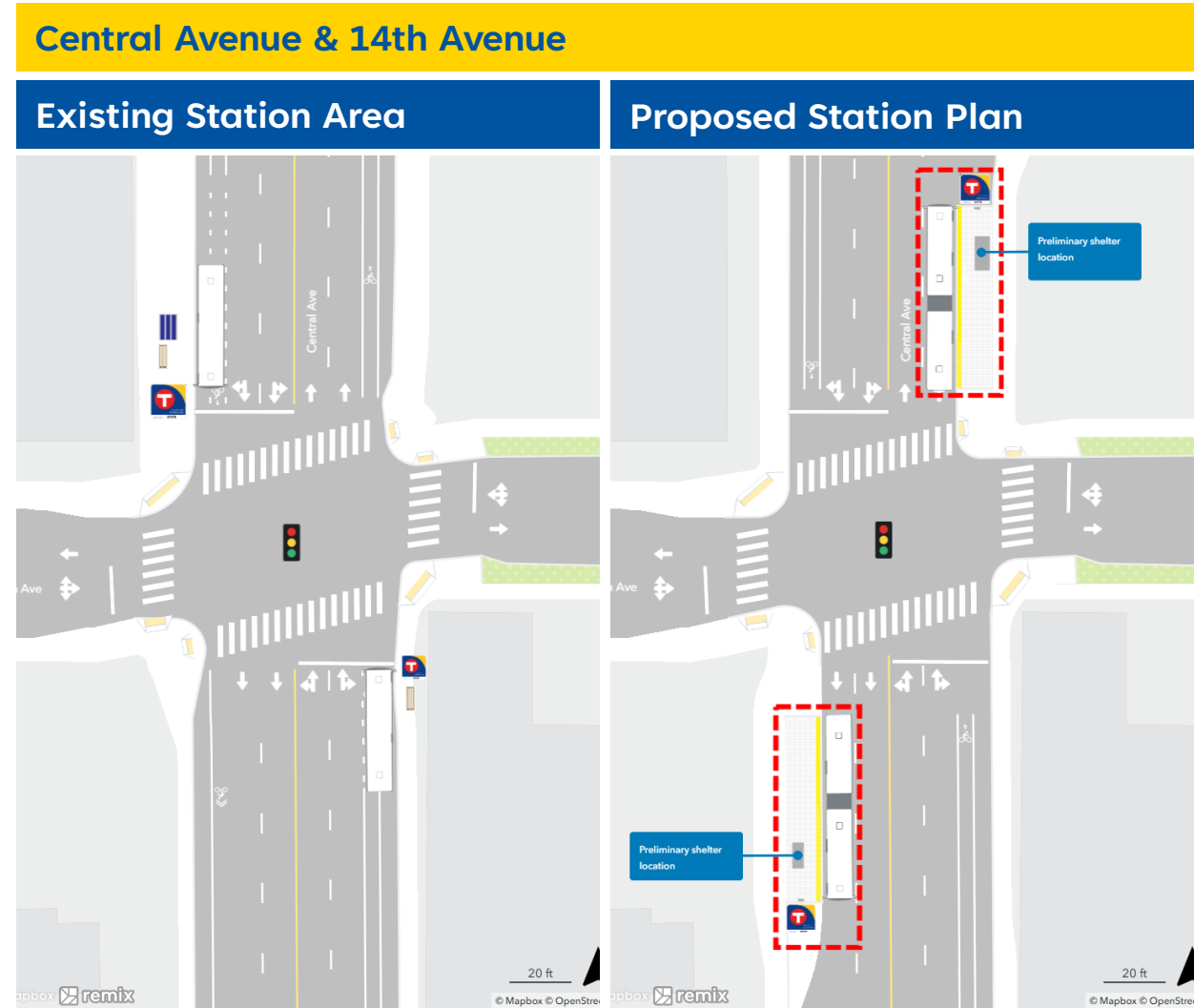
Draft Corridor Plan – seeking input now!

- Identifies proposed station locations
- Early, important opportunity for community input
- Addresses key station location questions:
 - Which intersections will have BRT stations?
 - In which quadrants (corners) of the intersections will the platforms be located?
 - How were the locations determined?



Draft Corridor Plan

- Proposed platform locations developed through site-specific review
- Concept designs will evolve and be refined through engineering and coordination
- Other planning issues (ongoing)
 - Project coordination with partners
 - Bus priority treatments
 - Supporting local service



Public engagement

- Spring-fall 2022: Raised awareness about the project
- **Public comment period: October 24 – December 5**
- Available now on the project website:
 - Draft Corridor Plan (full document)
 - Station concepts
 - Survey to provide feedback on specific stations and/or overall project

metrotransit.org/f-line-project



Out in the community

- Meet Route 10 riders at stops and aboard buses
- Door knock and distribute flyers to all homes and businesses near proposed station locations
- Postcards sent to all homes and businesses along the corridor
- Share information via email newsletters and social media
- Partner with neighborhood, community, business, and advocacy groups
- Attend community events
- Documents available in Spanish, Somali, Hmong, Oromo, and Arabic



**Changes coming to Route 10 in 2026.
Metro Transit is planning F Line station locations.**

COMMENT NOW!

metrotransit.org/F-Line-Project



Se avecinan cambios en la Ruta 10 en 2026. Metro Transit planea la ubicación de las estaciones de la línea F. ¡Comparta sus opiniones!

Isbeddelo ayaa ku imanaya Jidka 10 sannadka 2026. Metro Transit waxa ay qorshaynaysaa goobaha Saldhigga leen F. La wadaaga ra'yi-celintaada!

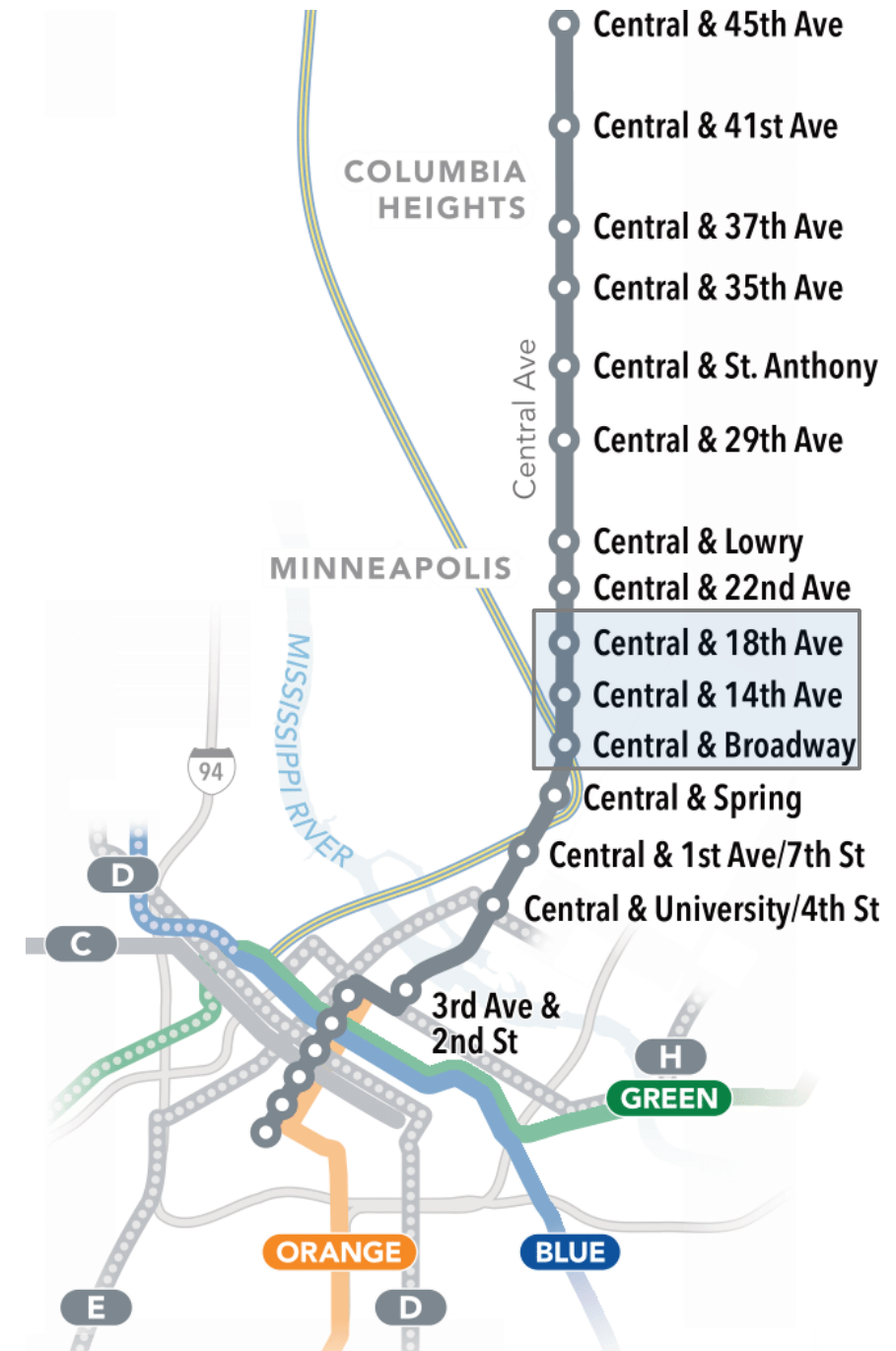
Jijjiramoota bara 2026 keessa Daandii 10faatti dhufaa jiran. Meetiiroo Tiraanzit bakkeewwan Buufata Toora F karoorsaa jira. Duubdeebii keessan nuuf qoodaa!

2026 yuuv muaj Kev hloov rau Npav 10. Metro Transit tabtom npaj Npav F cov chaw samthiaj tos. Thov qhia seb nej xav li cas!

عقووم Metro Transit طططعت 2026 ف 10 راسم وراوع تاوييغت أرطتس
طططعتا نطاطم F

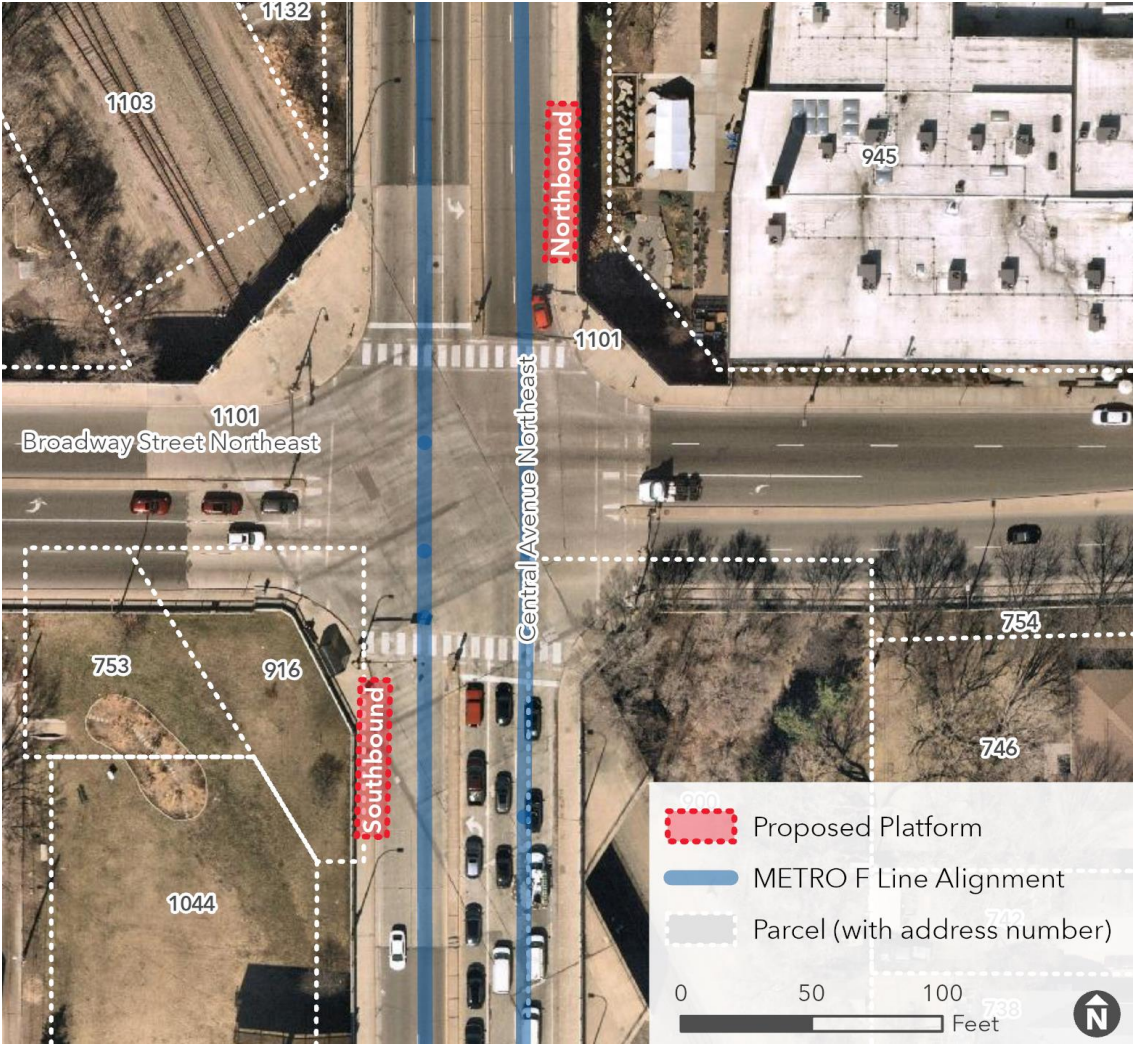
Station Locations

- 32 stations, 25 built by the project
 - 3 new stations proposed on Central in the Logan Park neighborhood
- Station location considerations
 - Spacing between stations
 - Existing ridership
 - Connecting transit service
 - Community input
 - Land use and access to destinations
 - Street design and available right-of-way



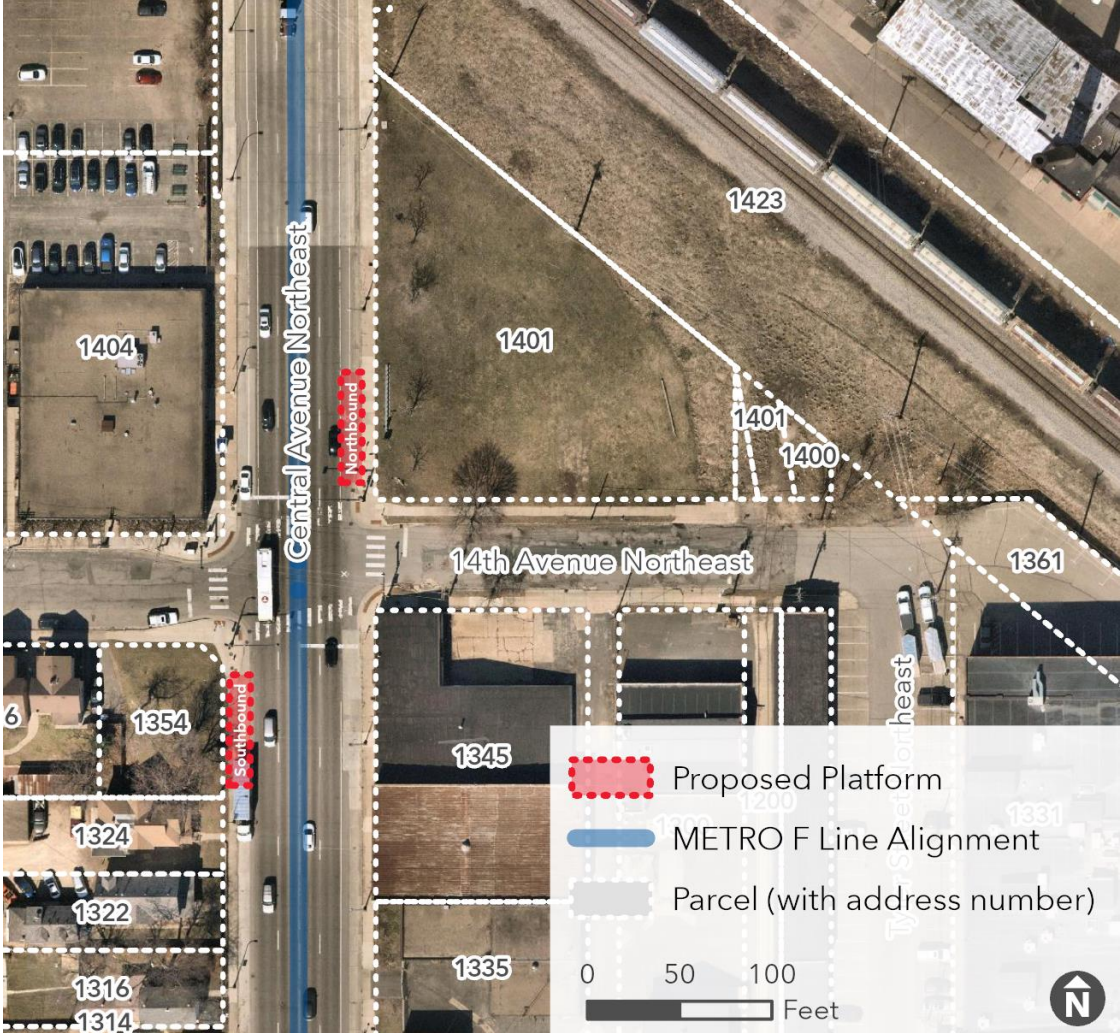
Central & Broadway

- Proposed platform locations are at existing Route 10 bus stops
- Transfer to Route 30 (on Broadway)
- On bridge, posing construction limitations
 - Resulting in atypical platform configurations
- Coordination with MnDOT PEL Study



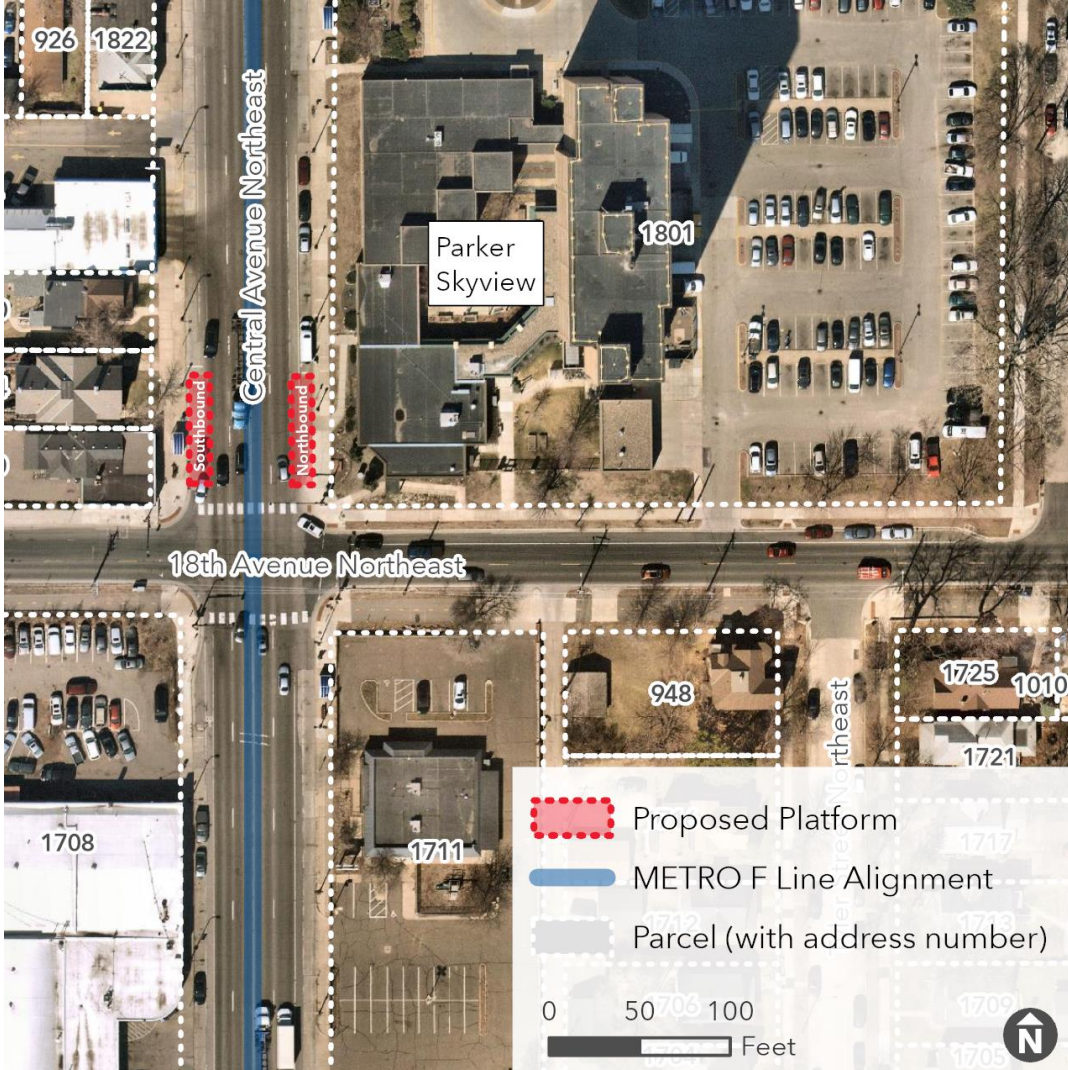
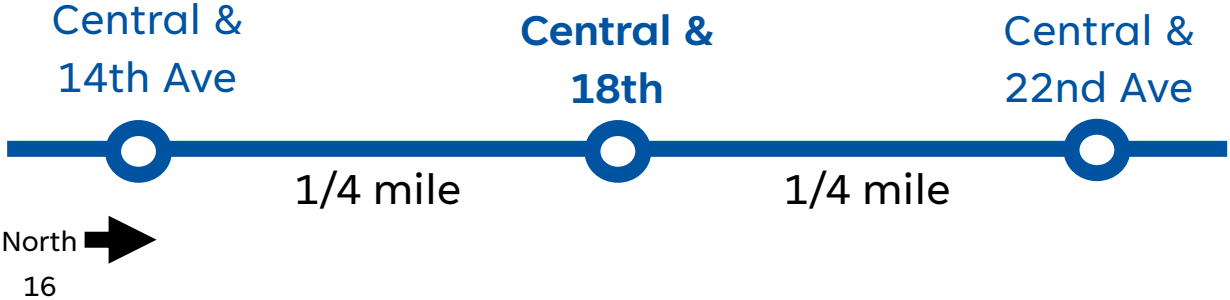
Central & 14th Ave

- Proposed platform locations **differ from existing** Route 10 bus stops
- Northbound farside (NE corner) of 14th Ave
 - Property owned by City of Minneapolis
- Southbound farside (SW corner) of 14th Ave
- Youngblood Apartments, Timber & Tie
- Coordination with MnDOT PEL Study



Central & 18th Ave

- Proposed **southbound** platform location at **existing** Route 10 bus
- Proposed **northbound** platform location **differs** from existing Route 10 bus stop
 - Exploring relocation of [disability transfer zone](#) currently on Central Ave at NE corner
- More space on north leg of intersection
- 1717 Central Ave development
- Coordination with MnDOT PEL Study



Corridor Plan next steps

We are here



Seeking community input to establish station locations

Community engagement

Help us plan F Line station locations

- Public comment period: **October 24 – December 5**
- Review the Draft Corridor Plan and submit comments
 - **Survey** at metrotransit.org/f-line-project
 - Email FLine@metrotransit.org
 - Call Nasser Mussa, Community Outreach Coordinator at 651-829-5305
- F Line Update newsletter sign-up



Review and submit
comments at
[metrotransit.org/
f-line-project](https://metrotransit.org/f-line-project)

Thank You!

Jake Knight

Senior Planner

jake.knight@metrotransit.org

Nasser Mussa

Community Outreach Coordinator

nasser.mussa@metrotransit.org