



METRO F Line – Draft Corridor Plan

Fridley City Council Conference Meeting | November 14, 2022

Jake Knight, Senior Planner, Arterial BRT

Nasser Mussa, Community Outreach Coordinator

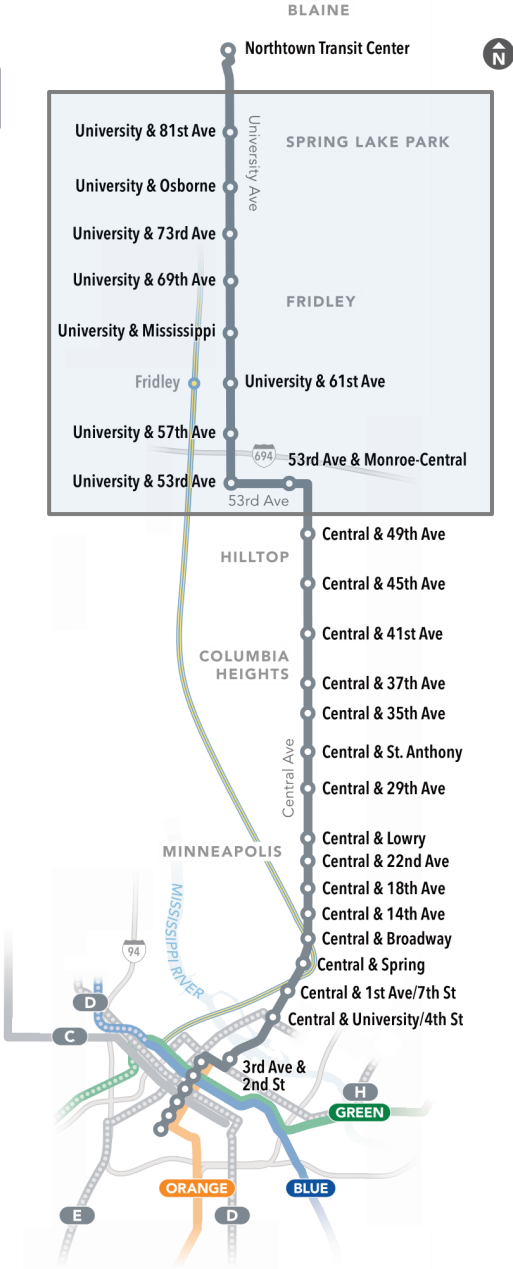
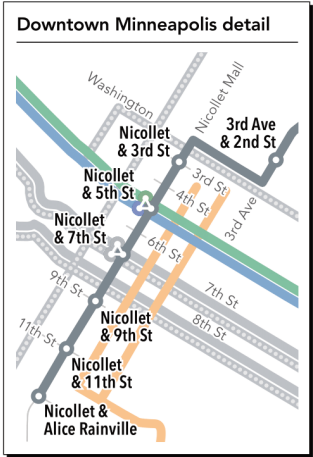
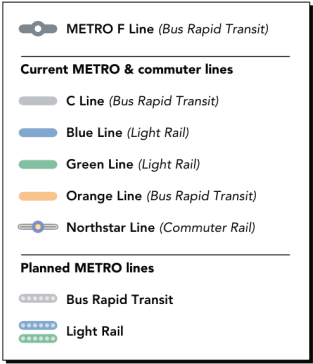


METRO F Line Bus Rapid Transit

- Fast, frequent, all-day service
- 13-mile corridor from Northtown Transit Center to downtown Minneapolis
 - 5 miles in Fridley
- Substantial upgrade to Route 10, one of the region's highest-ridership bus routes
- 32 stations with enhanced features
 - 9 new stations proposed in Fridley
- Targeted opening in 2026



metrotransit.org/f-line-project



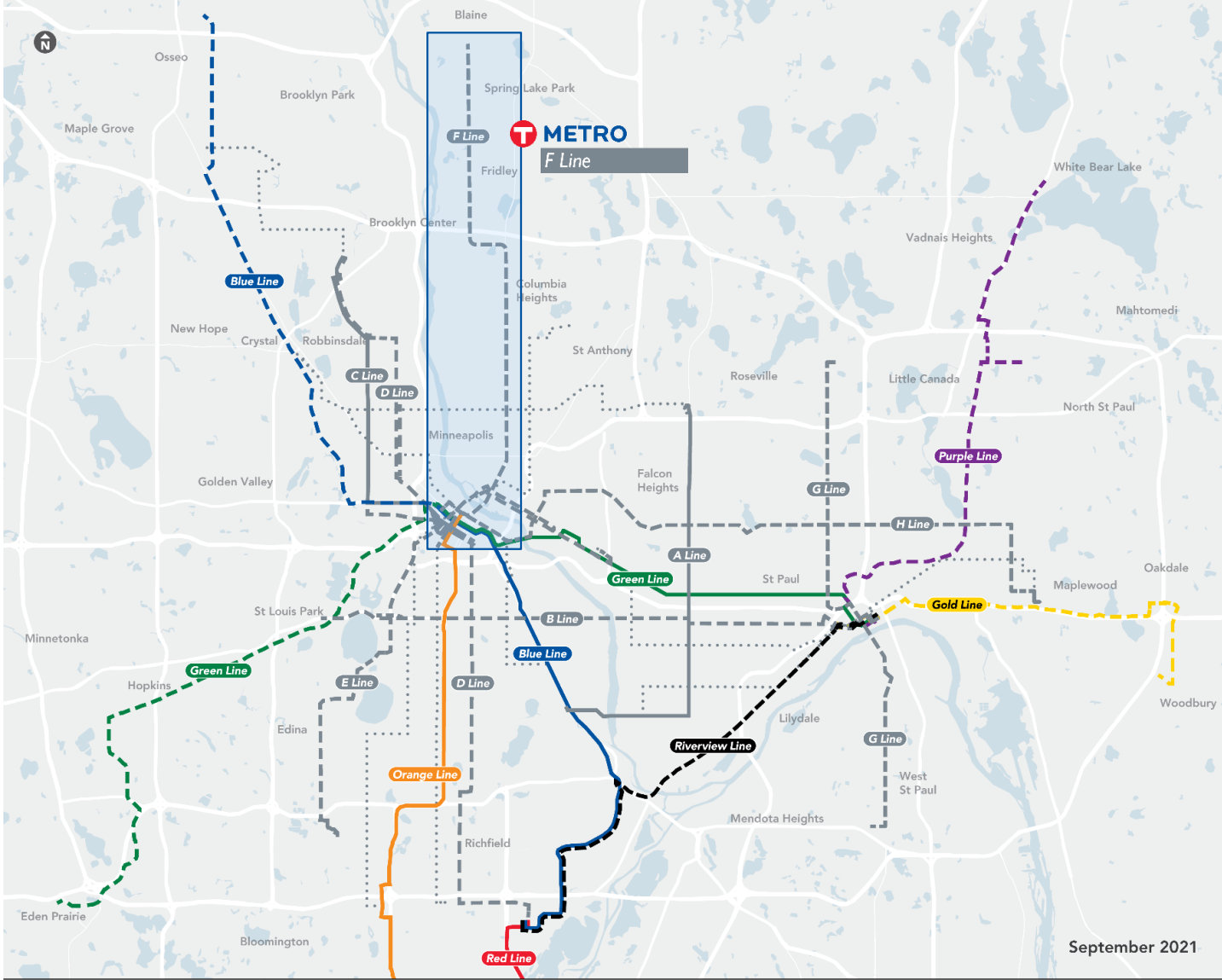
Need for improved transit in the corridor

- Provide **faster**, more **reliable**, and more **frequent** bus service
- Improve the transit experience at stops and on vehicles
- Improve transit access in northern suburbs and NE Minneapolis
 - Connection to METRO network of light rail and BRT lines



A network of twelve BRT lines planned by 2030

- Red Line: 2013
- A Line (Snelling): 2016
- C Line (Penn): 2019
- Orange Line: 2021
- D Line (Chicago/Fremont – Route 5): 2022
- B Line (Lake/Selby – Route 21): 2024
- E Line (Hennepin/France – Route 6): 2025
- Gold Line: 2025
- F Line (Central Avenue – Route 10): 2026
- Purple Line: 2026
- G Line (Rice/Robert – Routes 62/68): 2027
- H Line (Como/Maryland – Route 3): 2028



Current METRO network

- A Line
- C Line
- Blue Line
- Green Line
- Orange Line
- Red Line

Planned METRO network

- - - Planned BRT
- Additional candidates for BRT between 2030 and 2040
- Gold Line
- Purple Line
- Green Line Extension
- Blue Line Extension
- Riverview Line

Learn more at
metrotransit.org/brt



Arterial bus rapid transit (BRT)

2-3 stations per mile, designed for faster stops

High-tech, high-amenity, secure stations

Pre-boarding fare payment for faster stops

Higher-capacity buses & boarding through all doors

Bus priority signals & lanes

Faster, frequent, all-day service



What will F Line stations look like?



A **Pylon markers** help riders identify stations from a distance.

B **Real-time NexTrip signs** provide bus information, and on-demand **annunciators** speak this information for people with low vision.

C **Shelters** provide weather protection and feature push-button, on-demand **heaters** and shelter **lighting**. Shelter sizes will vary based on customer demand (small shown here).

D **Ticket machines** and **fare card readers** collect all payment before customers board the bus.

E **Emergency telephones** provide a direct connection to Metro Transit police. Stations also feature **security cameras**.

F Stations feature **trash and recycling** containers.

G Platform edges are marked with a cast-iron **textured warning strip** to keep passengers safely away from the curb while the bus approaches. Many stations also feature **raised curbs** for easier boarding.

H **Platform areas** are distinguished by a dark gray concrete pattern.

I **Benches** at stations provide a place to sit.

J Most stations have **bike parking**.

At some stations, **railings** separate the platform from the sidewalk.

Some stations have pedestrian-scale **light fixtures** to provide a safe, well-lit environment.

Project schedule

- Network Next (2021): Central Avenue/ Route 10 corridor named as the F Line
 - Performance history, corridor attributes, community input
- City of Fridley represented on Technical Advisory Committee (TAC)
- We are currently seeking **community input** to establish **station locations** prior to the Engineering phase
- Community engagement will continue through the Engineering and Construction phases



Project partners



Coordination with other projects

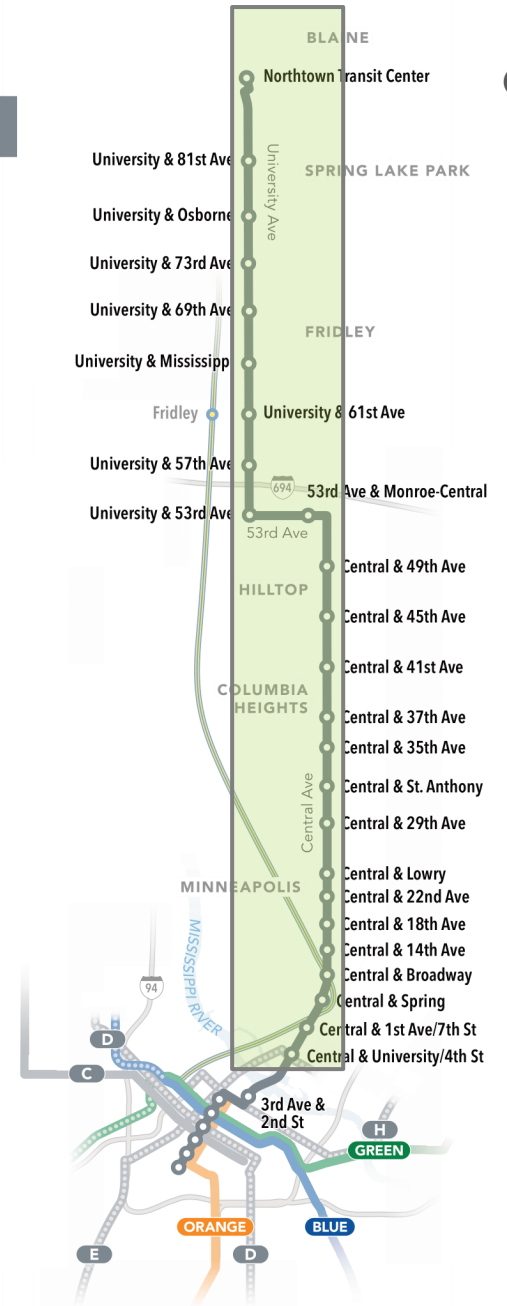
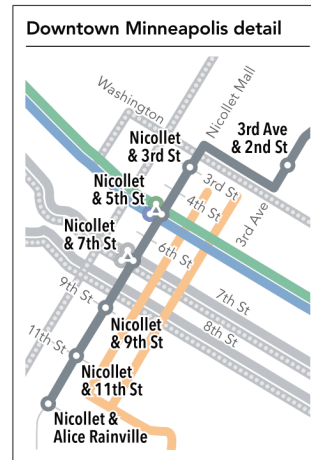
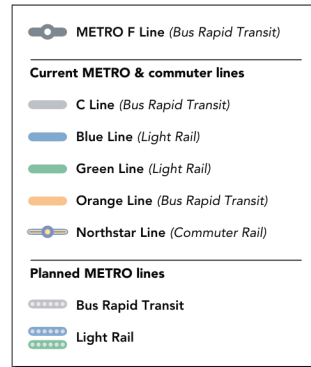
- Coordinating design with several projects from MnDOT, county and city partners
- MnDOT: Hwy 47 and Hwy 65 Planning and Environmental Linkages (PEL) Study
 - Evaluating broader multimodal alternatives to improve safety and mobility
 - Higher-level concepts, narrowing options
 - Timing of project outcomes uncertain
 - Close collaboration to ensure compatibility

Learn more about MnDOT's PEL Study
talk.dot.state.mn.us/hwy-47-hwy-65-study



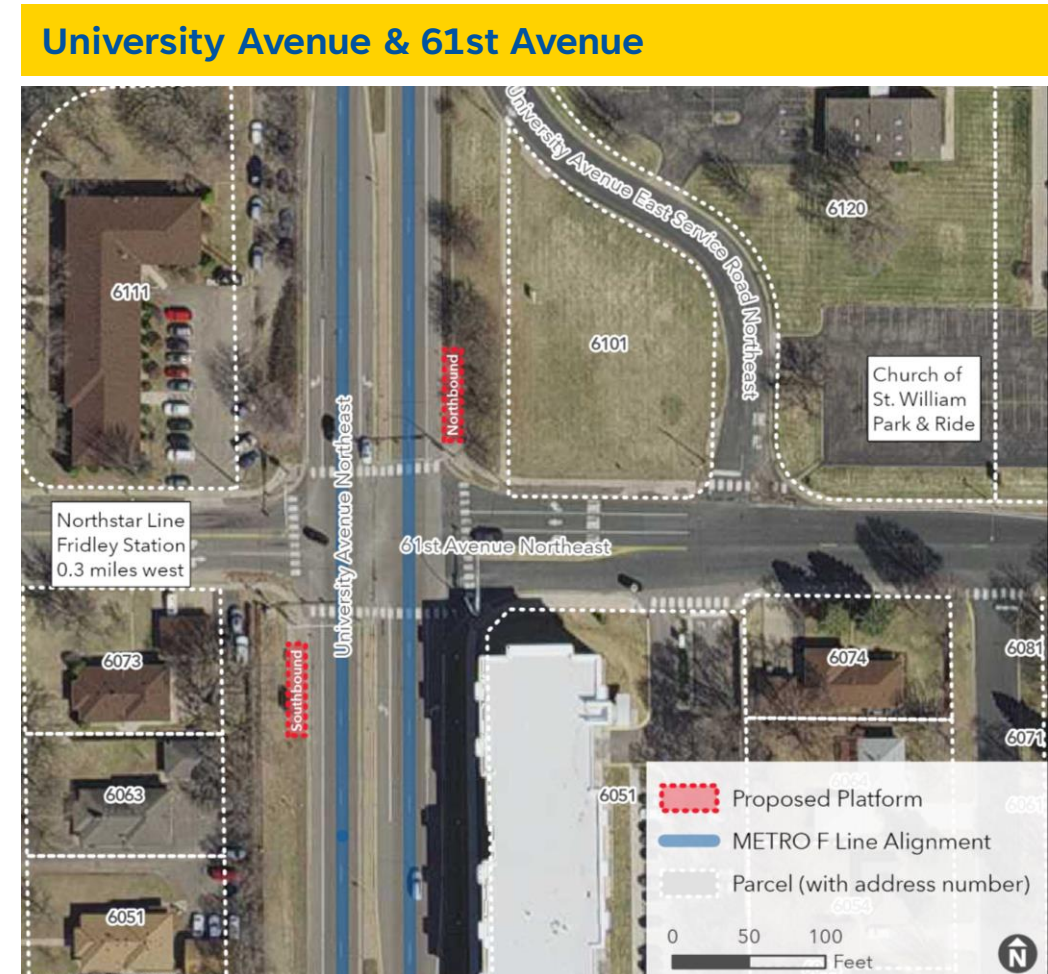
F Line

MnDOT PEL Study Area



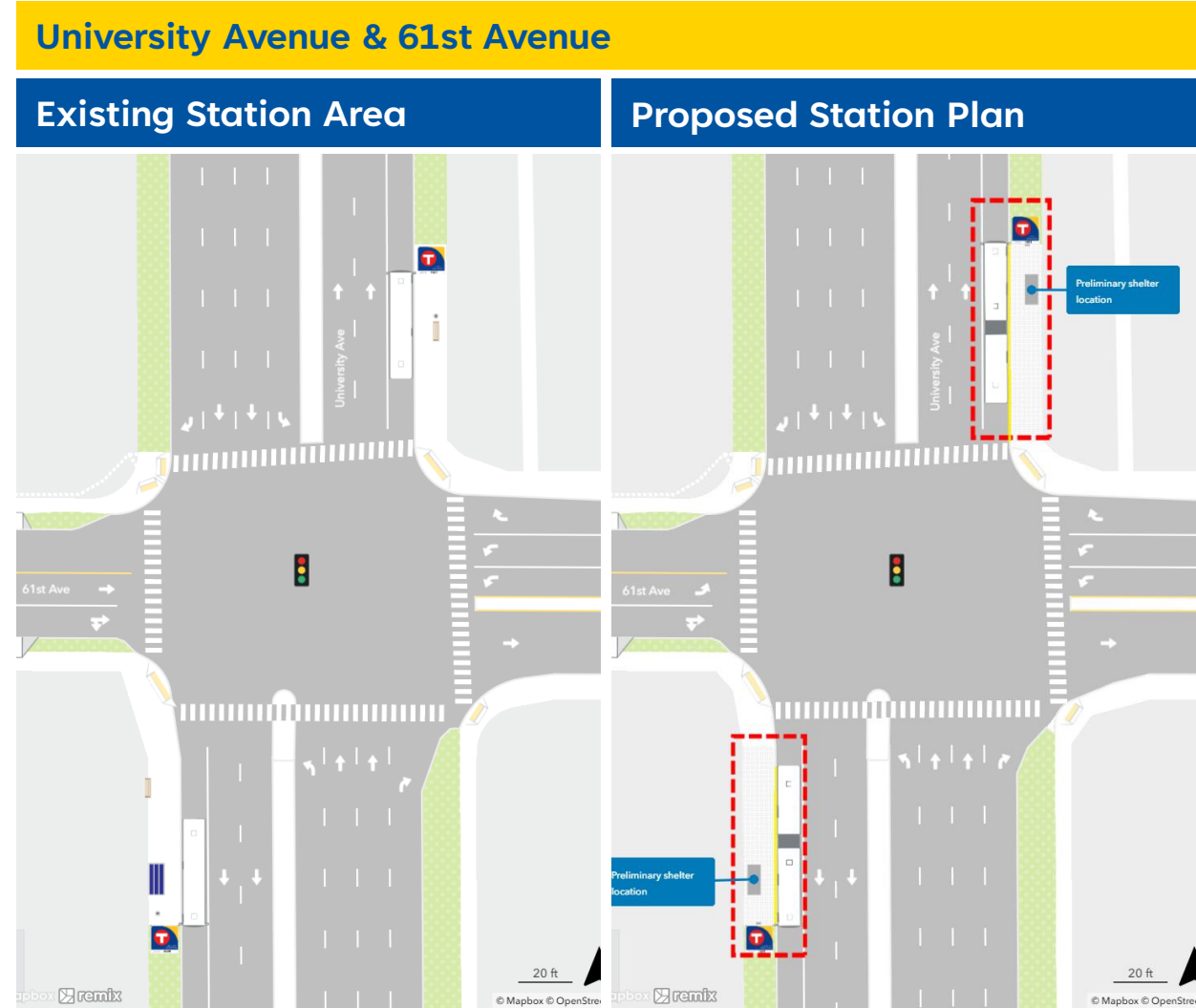
Draft Corridor Plan – seeking input now

- Identifies proposed station locations
- Early, important opportunity for community input
- Addresses key station location questions:
 - What intersections will have BRT stations?
 - In which quadrants (corners) of the intersections will the platforms be located?
 - How was the location determined?



Draft Corridor Plan

- Proposed platform locations developed through site-specific review
- Concept designs will evolve and be refined through engineering and coordination
- Other planning issues (ongoing)
 - Opportunities and priorities for bus priority treatments to meet speed and reliability goals
 - Supporting local service



Public engagement

- Spring-fall 2022: Raised awareness about the project
- **Public comment period: October 24 – December 5**
- Available now on the project website:
 - Draft Corridor Plan (full document) and station concepts
 - **Survey** to provide feedback on specific stations and/or overall project
- Virtual open house **Nov. 15, 6:30-8:00** (register on the project website)

metrotransit.org/f-line-project



Out in the community

- Meet Route 10 riders at stops and aboard buses
- Door knock and distribute flyers to all homes and businesses near proposed station locations
- Direct mailing to all homes, businesses, and property owners along the corridor
- Email newsletters and social media
- Partner with neighborhood, community, business, and advocacy groups
- Attend community events
- Documents available in Spanish, Somali, Hmong, Oromo, and Arabic



**Changes coming to Route 10 in 2026.
Metro Transit is planning F Line station locations.**

COMMENT NOW!

metrotransit.org/F-Line-Project



Se avecinan cambios en la Ruta 10 en 2026. Metro Transit planea la ubicación de las estaciones de la línea F. ¡Comparta sus opiniones!

Isbeddelo ayaa ku imanaya Jidka 10 sannadka 2026. Metro Transit waxa ay qorshaynaysaa goobaha Saldhigga leen F. La wadaag ra'yi-celintaada!

Jijjiramoota bara 2026 keessa Daandii 10ffaatti dhufaa jiran. Meetiroo Tiraanzit bakkeewwan Buufata Toora F karoorsaa jira. Duubdeebii keessan nuuf qoodaa!

2026 yuuv muaj Kev hloov rau Npav 10. Metro Transit tabtom npaj Npav F cov chaw samthiaj tos. Thov qhia seb nej xav li cas!

عقاوم Metro Transit ططخت 2026 يف 10 راسم يواع تاوييغت آرطتس
ططخت 10 تااطم F

Station Locations

- 32 stations, 25 built by the project
 - 9 new stations proposed in Fridley
- Considerations
 - Spacing between stations
 - Existing ridership
 - Pedestrian access
 - Connecting transit service
 - Community input
 - Land use and access to destinations
 - Street design and available right-of-way



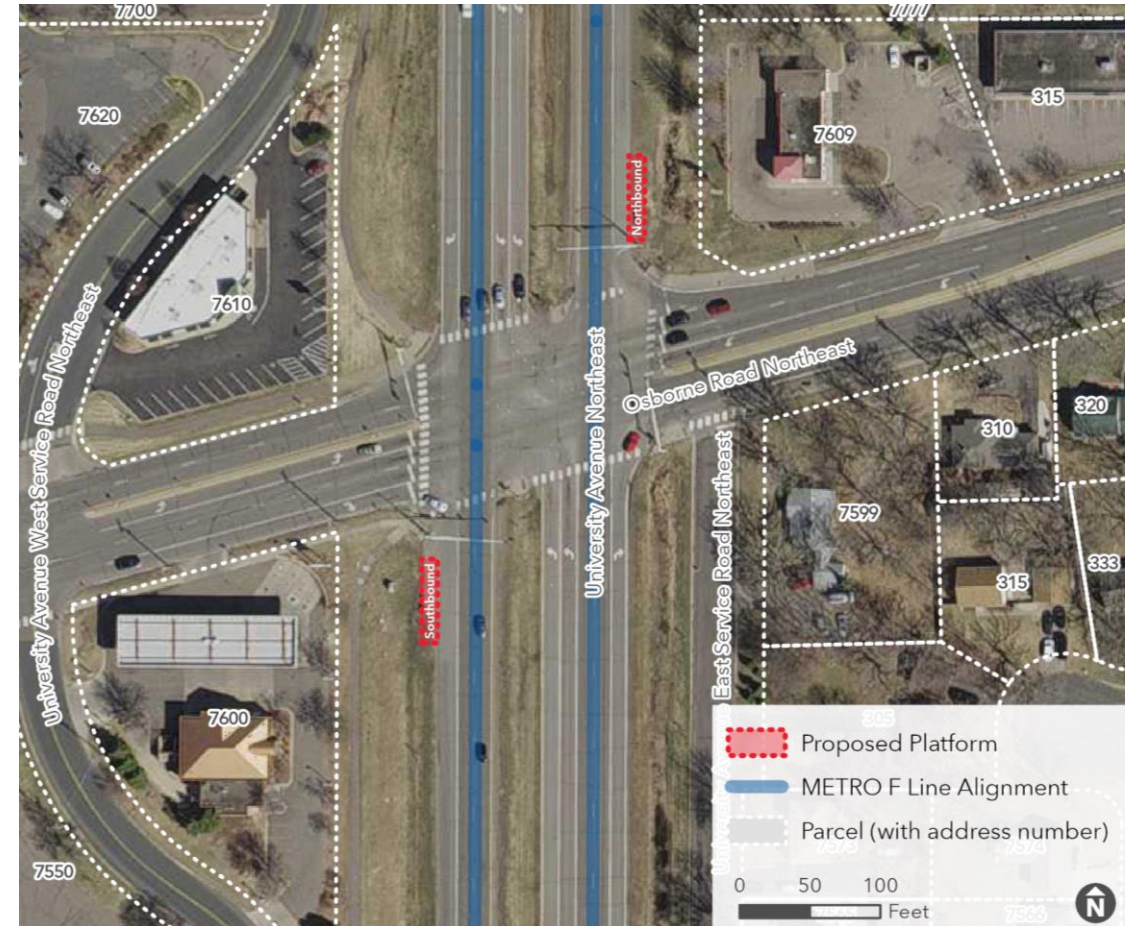
University & 81st Avenue

- Proposed platform locations are existing Route 10 bus stops
- Connection to Route 824
 - Weekday peak-only to downtown via University
- Recent sidewalk and ADA improvements (2021)
- Planned lighting improvements (2025)



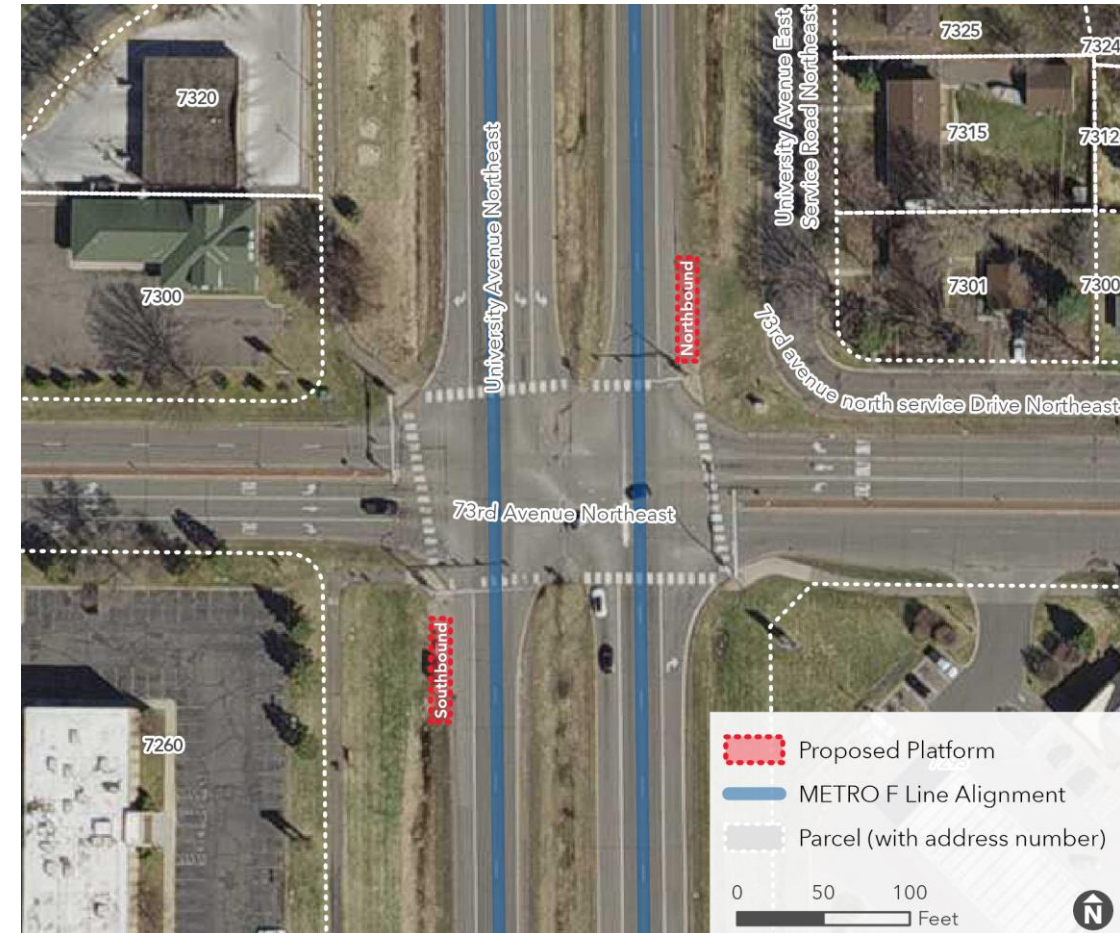
University & Osborne Avenue

- Proposed platform locations are existing Route 10 bus stops
- Connection to Route 824
- Mercy Hospital 1/4 mile east
- Planned curb, ADA, lighting improvements (2025)



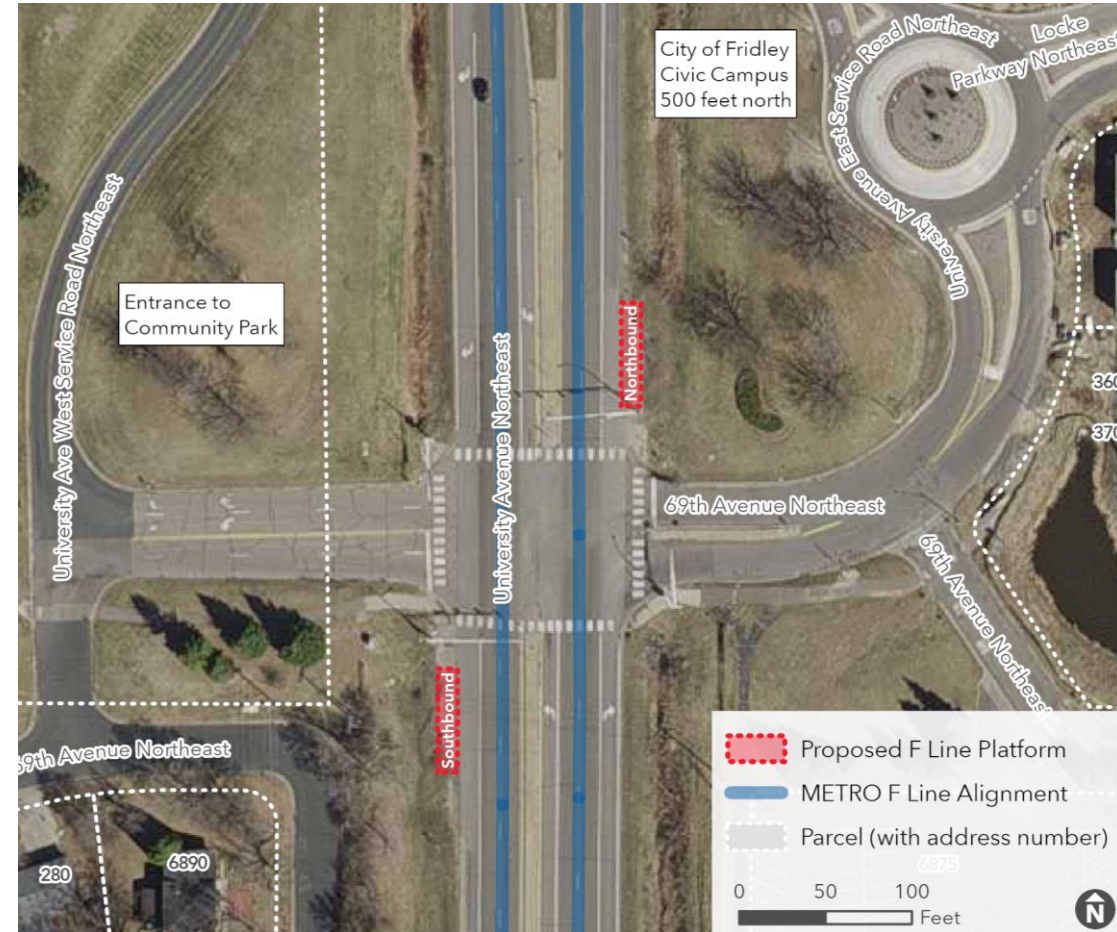
University & 73rd Avenue

- Proposed platform locations are existing Route 10 bus stops
- Connection to Route 824
- Planned curb, sidewalk, ADA, lighting improvements (2025)
- 73rd Ave road diet (2026)



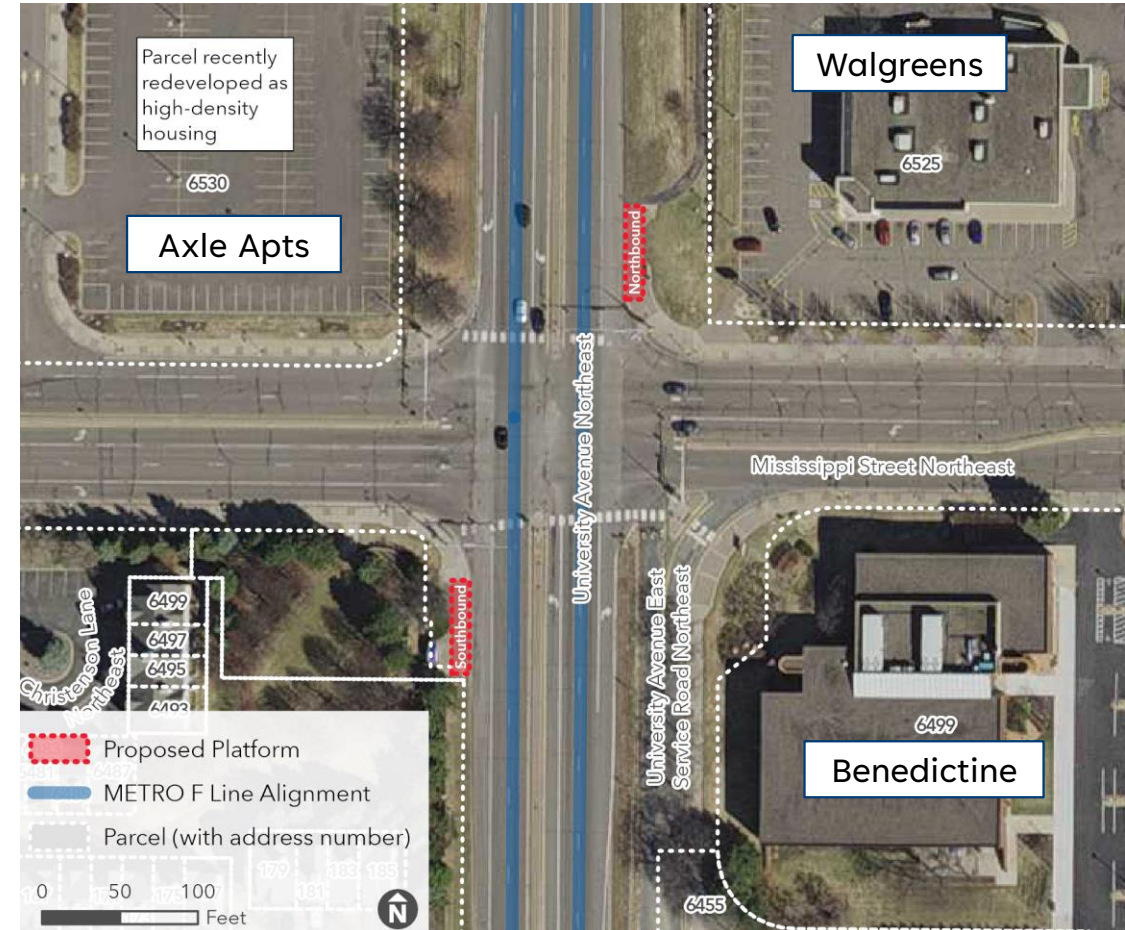
University & 69th Avenue

- Proposed platform locations are existing Route 10 bus stops
- Connection to Route 824
- Civic Center, Community Park, Rice Creek West Regional Trail
- Planned trail on west side of University (2023)
- Planned lighting improvements (2025)



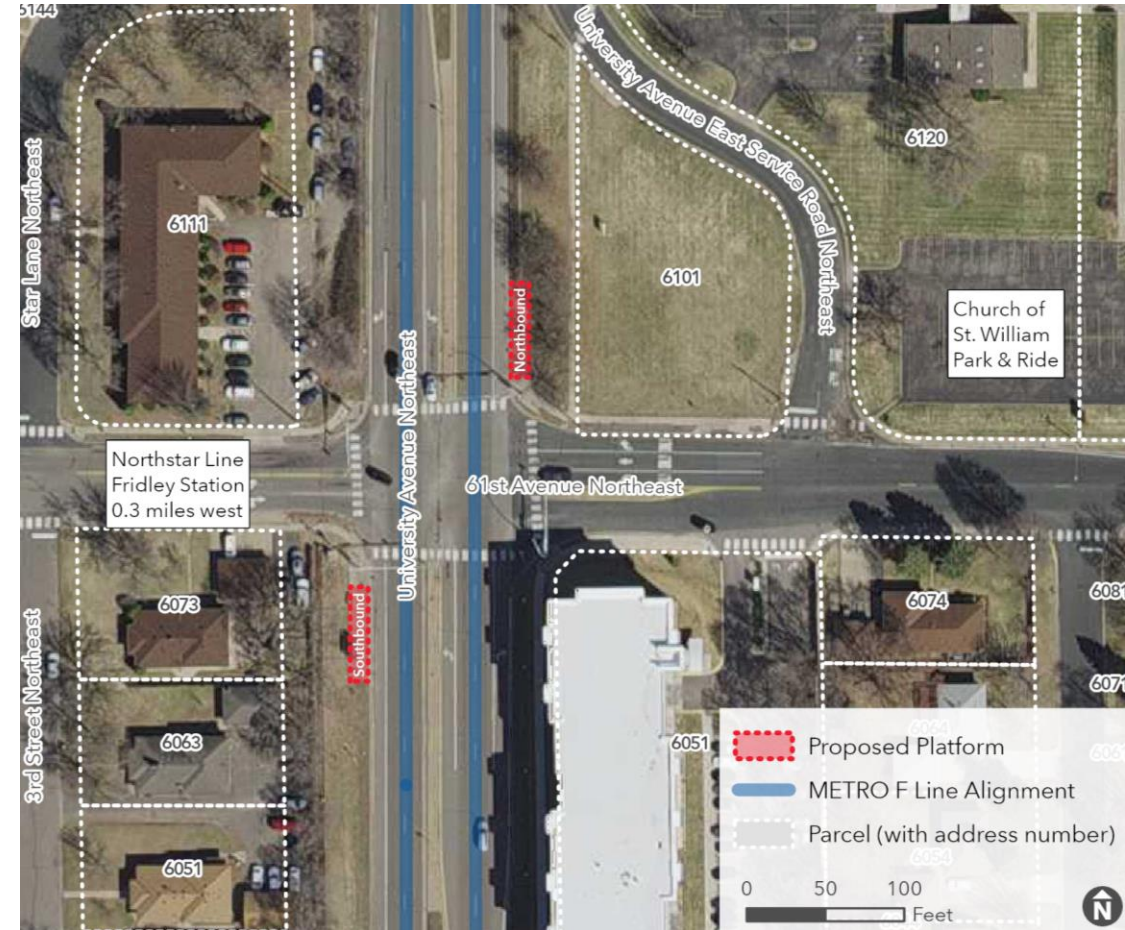
University & Mississippi

- Proposed platform locations are existing Route 10 bus stops
- Connection to Route 824
- Axle apartments, Benedictine
- Planned trail on west side of University (2023)
- Planned curb, sidewalk, ADA, lighting improvements (2023-2025)
- Mississippi Street reconstruction (2025)



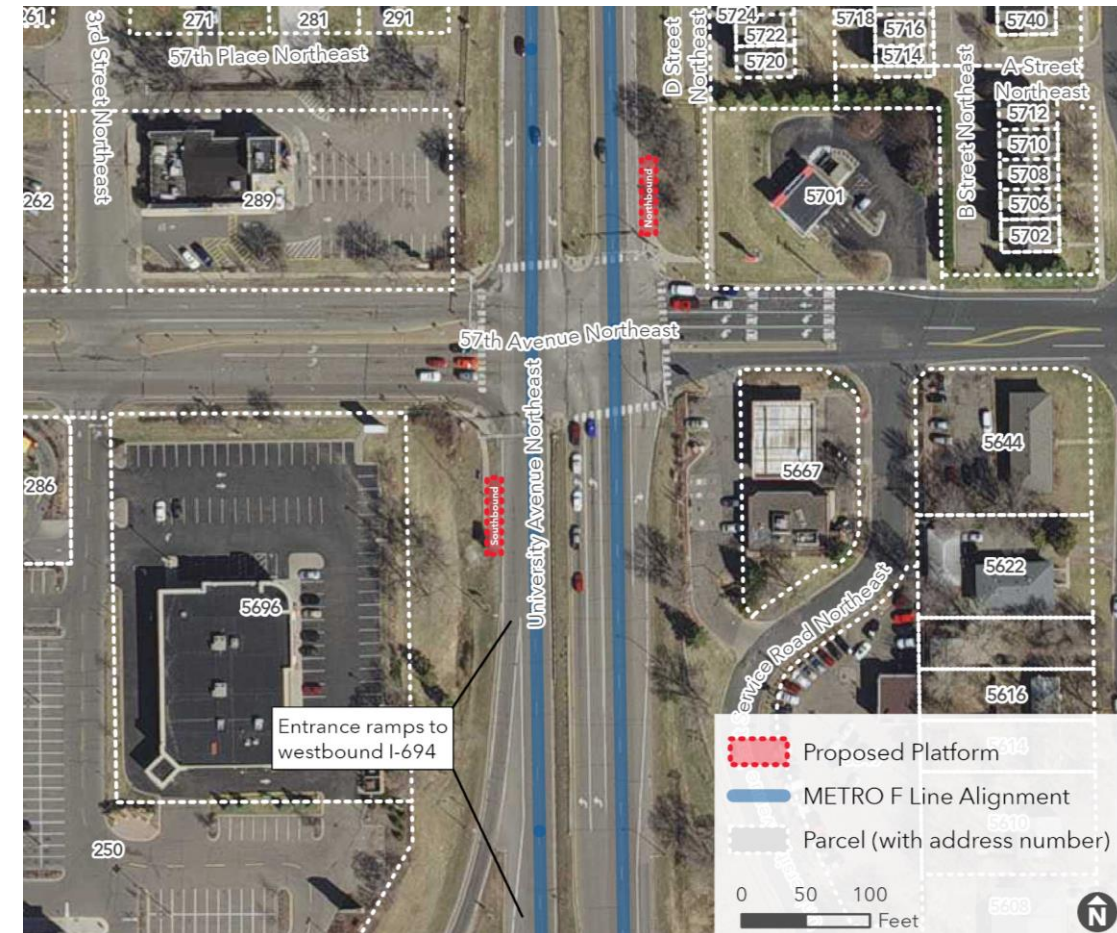
University & 61st Ave

- Proposed platform locations are existing Route 10 bus stops
- Connection to Route 824, Northstar Fridley Station, Church of St. William Park & Ride
- Cielo Apartments, Fridley middle and high schools, Fridley Community Center
- Planned lighting improvements (2025)



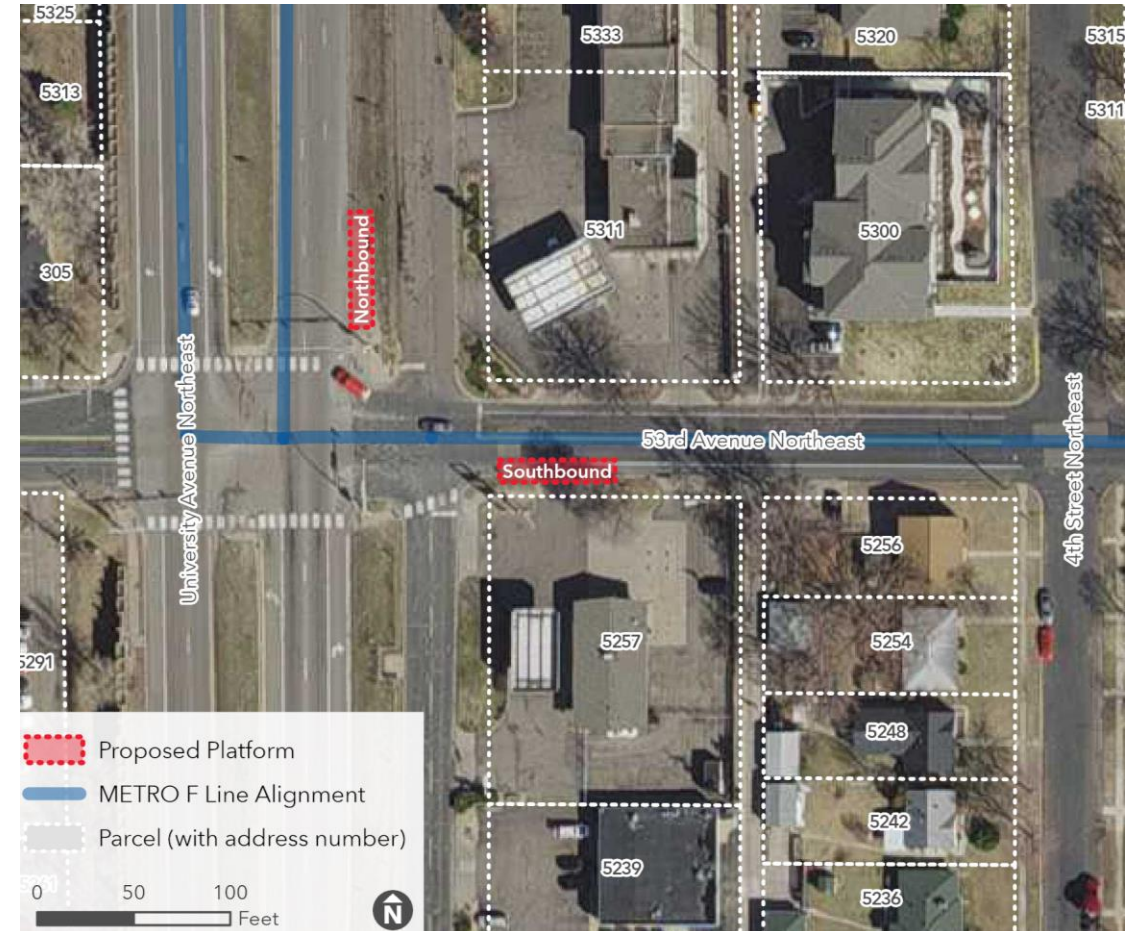
University & 57th Ave

- Proposed platform locations are existing Route 10 bus stops
- Connection to Route 824
- Fridley Market (Cub Foods, etc.)
- Planned curb, ADA, lighting improvements (2025)



University & 53rd Ave

- Proposed platform locations are existing Route 10 bus stops
- Connection to Routes 801 and 824
 - 801: Brooklyn Center to Rosedale via University Service Rd
- 53rd Ave trail and walk improvements (2023)
- Planned curb, ADA, lighting improvements (2025)
- Southbound platform: Proposed closure of western business driveway on 53rd Ave



53rd Ave & Monroe-Central

- Proposed platform locations **differ** from existing Route 10 bus stops
- Target, Medtronic
- 53rd Ave trail and walk improvements (2023)
- 53rd Ave roundabout safety project (2023)
- Existing stops to be consolidated



Corridor Plan next steps

We are here



Seeking community input to establish station locations

Community engagement

Help us plan F Line station locations

- Public comment period: **October 24 – December 5**
- Review the Draft Corridor Plan and submit comments
 - **Survey** at metrotransit.org/f-line-project
 - Email FLine@metrotransit.org
 - Call Nasser Mussa, Community Outreach Coordinator at 651-829-5305
- Virtual open house **Nov. 15, 6:30-8:00** (register on the project website)
- F Line Update newsletter

Thank You!

Jake Knight

Senior Planner

jake.knight@metrotransit.org

Nasser Mussa

Community Outreach Coordinator

nasser.mussa@metrotransit.org