



METRO F Line – Draft Corridor Plan

Marcy-Holmes Neighborhood Association, Infrastructure Committee | November 7, 2022
Jake Knight, Senior Planner, Arterial BRT | Nasser Mussa, Community Outreach Coordinator



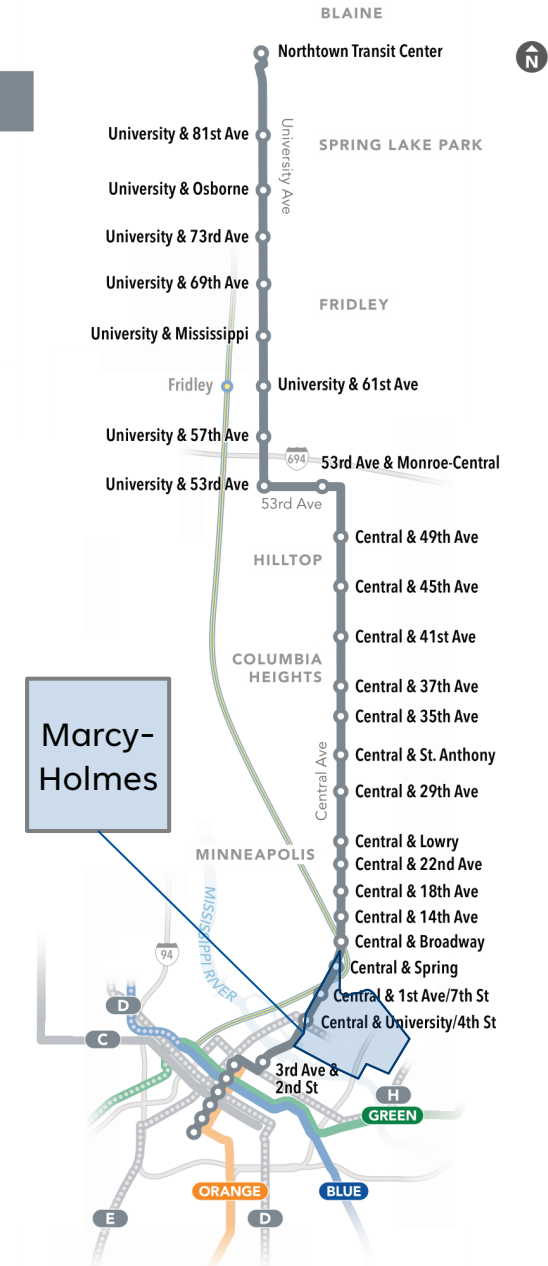
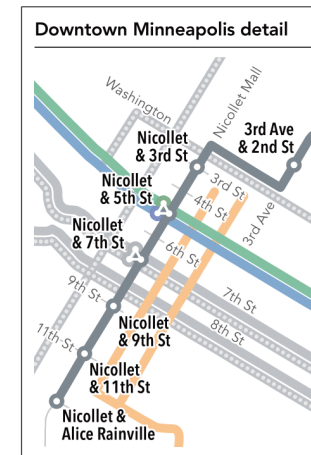
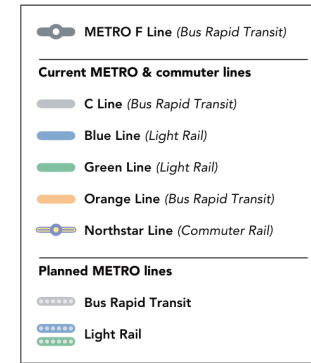


METRO F Line Bus Rapid Transit

- Fast, frequent, all-day service
- 13-mile corridor from Northtown Transit Center to downtown Minneapolis
- Substantial upgrade to Route 10, one of the region's highest-ridership bus routes
- 32 stations with enhanced features
 - 3 proposed on border of Marcy-Holmes
- Targeted opening in 2026



metrotransit.org/f-line-project

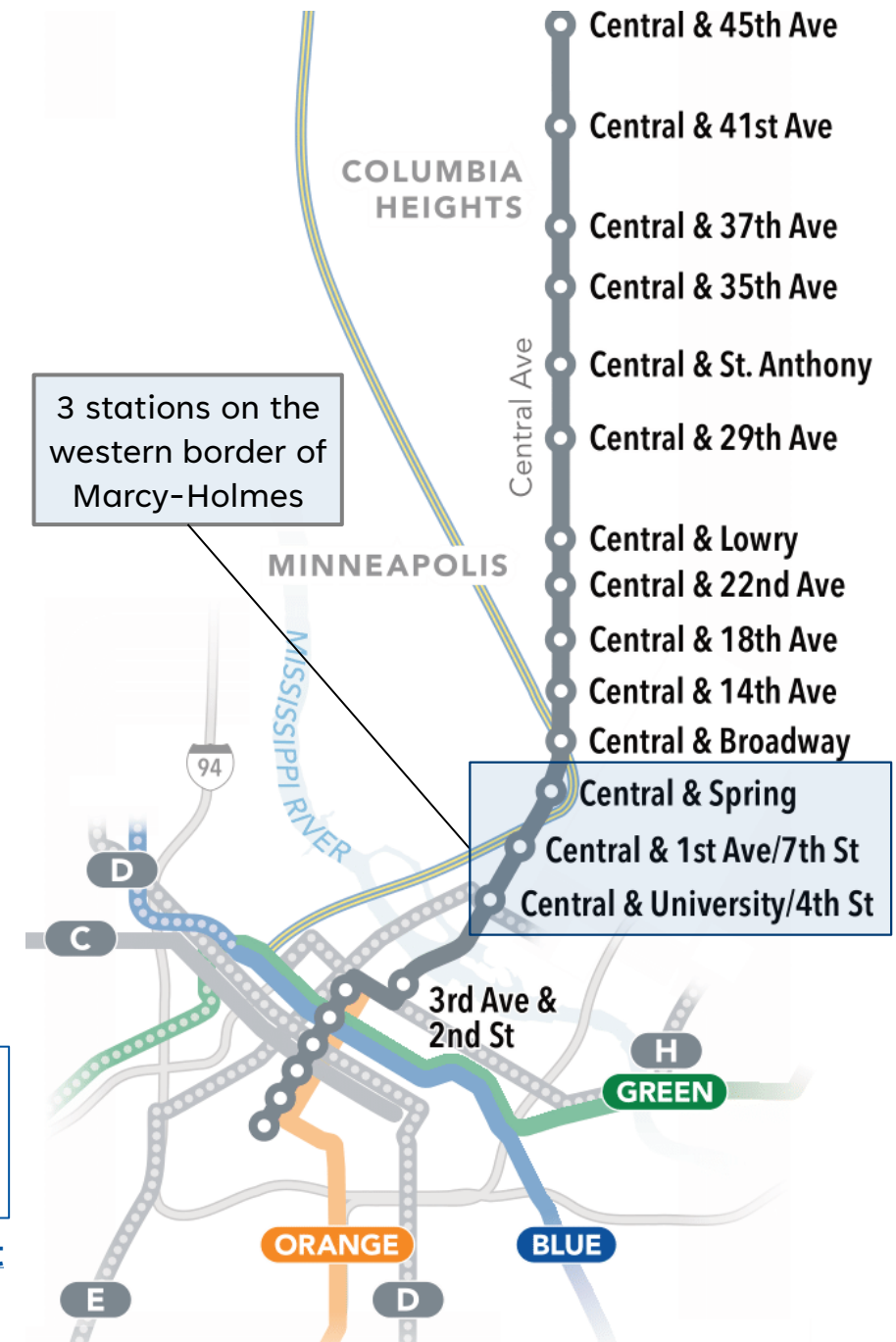


METRO F Line Bus Rapid Transit

- Fast, frequent, all-day service
- 13-mile corridor from Northtown Transit Center to downtown Minneapolis
- Substantial upgrade to Route 10, one of the region's highest-ridership bus routes
- 32 stations with enhanced features
 - 3 proposed on border of Marcy-Holmes
- Targeted opening in 2026

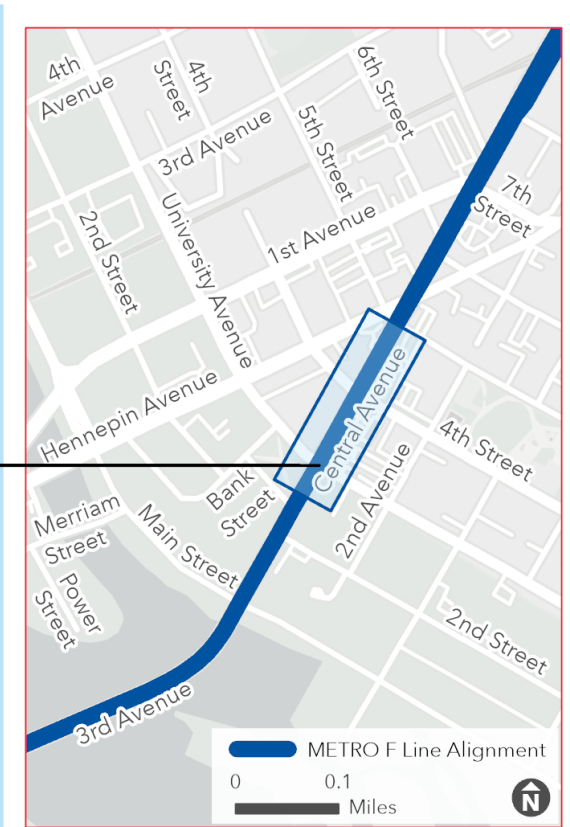
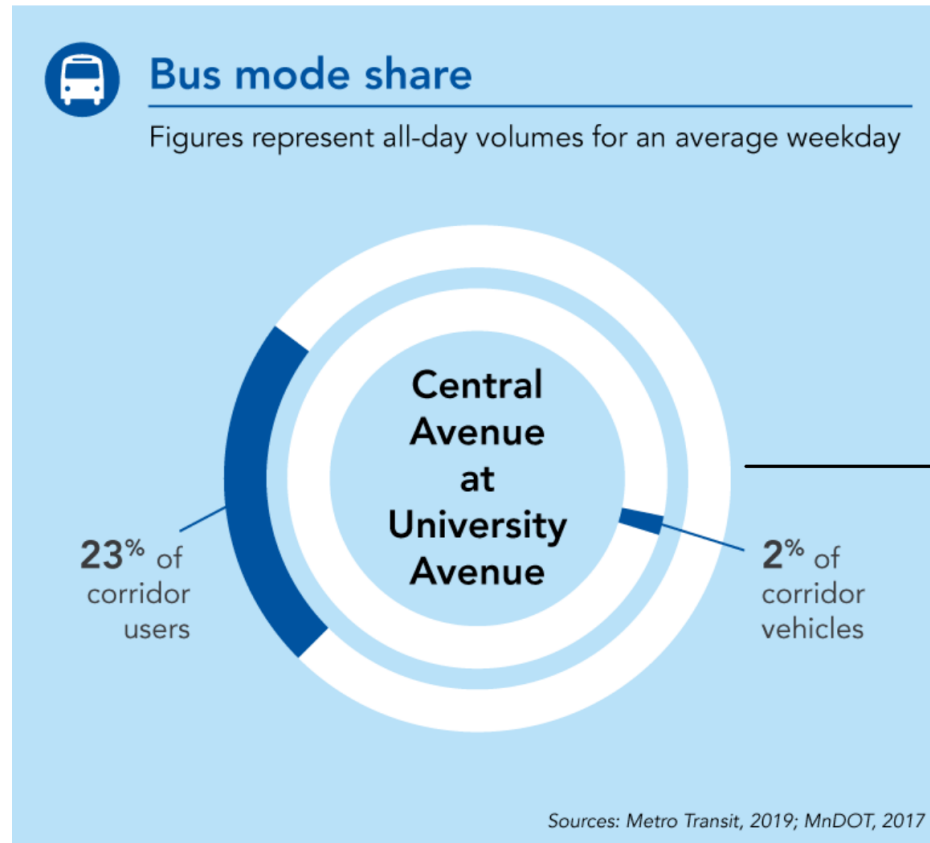


metrotransit.org/f-line-project



Need for improved transit in the corridor

- Provide faster, more reliable, more attractive bus service
- Improve transit access in NE Minneapolis and northern suburbs
- Improve the transit experience at stops and on vehicles



Learn more at
metrotransit.org/brt



Arterial bus rapid transit (BRT)

2-3 stations per mile, designed for faster stops

High-tech, high-amenity, secure stations

Pre-boarding fare payment for faster stops

Higher-capacity buses & boarding through all doors

Bus priority signals & lanes

Faster, frequent, all-day service



What will F Line stations look like?



A **Pylon markers** help riders identify stations from a distance.

B **Real-time NexTrip signs** provide bus information, and on-demand **annunciators** speak this information for people with low vision.

C **Shelters** provide weather protection and feature push-button, on-demand **heaters** and shelter **lighting**. Shelter sizes will vary based on customer demand (small shown here).

D **Ticket machines** and **fare card readers** collect all payment before customers board the bus.

E **Emergency telephones** provide a direct connection to Metro Transit police. Stations also feature **security cameras**.

F Stations feature **trash and recycling** containers.

G Platform edges are marked with a cast-iron **textured warning strip** to keep passengers safely away from the curb while the bus approaches. Many stations also feature **raised curbs** for easier boarding.

H **Platform areas** are distinguished by a dark gray concrete pattern.

I **Benches** at stations provide a place to sit.

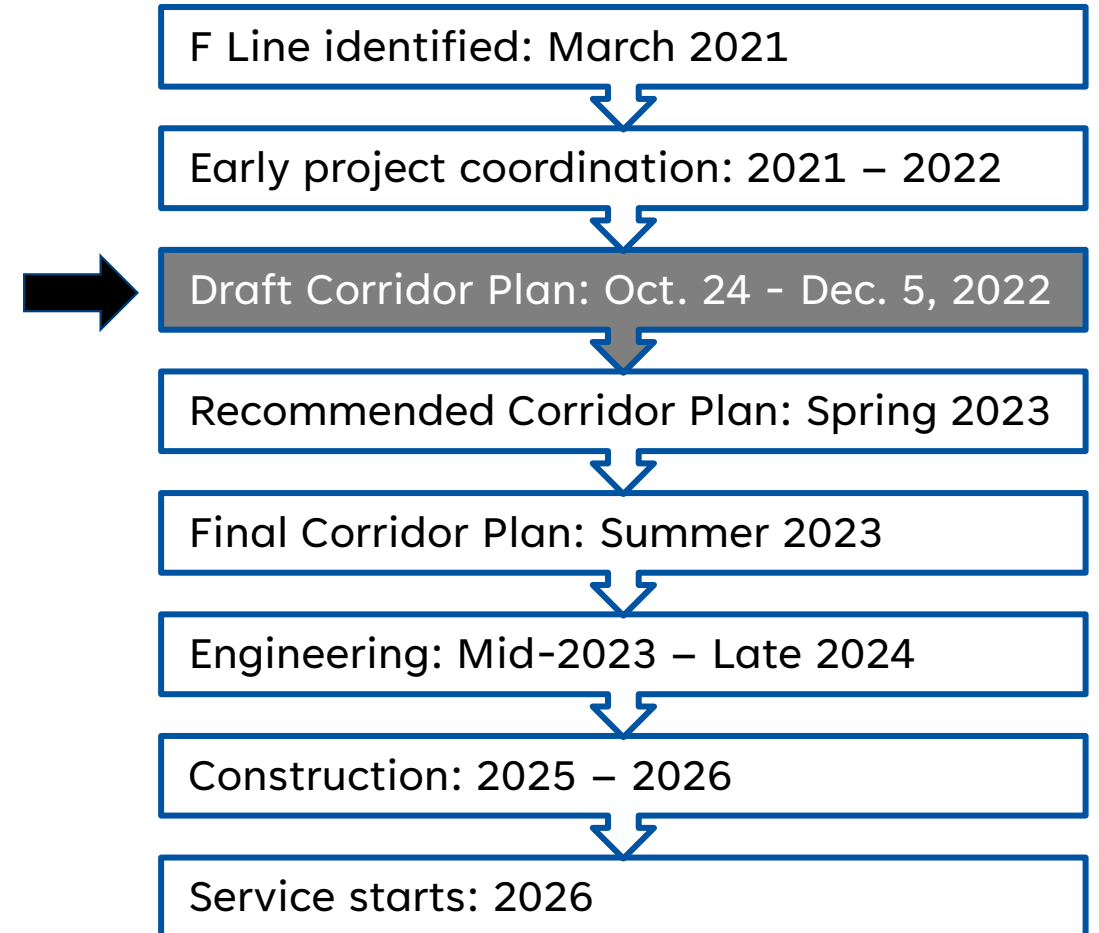
J Most stations have **bike parking**.

At some stations, **railings** separate the platform from the sidewalk.

Some stations have pedestrian-scale **light fixtures** to provide a safe, well-lit environment.

Project schedule

- Currently seeking **community input** to establish **station locations** prior to the Engineering phase
- Community engagement will continue through the Engineering and Construction phases



Coordination with other projects

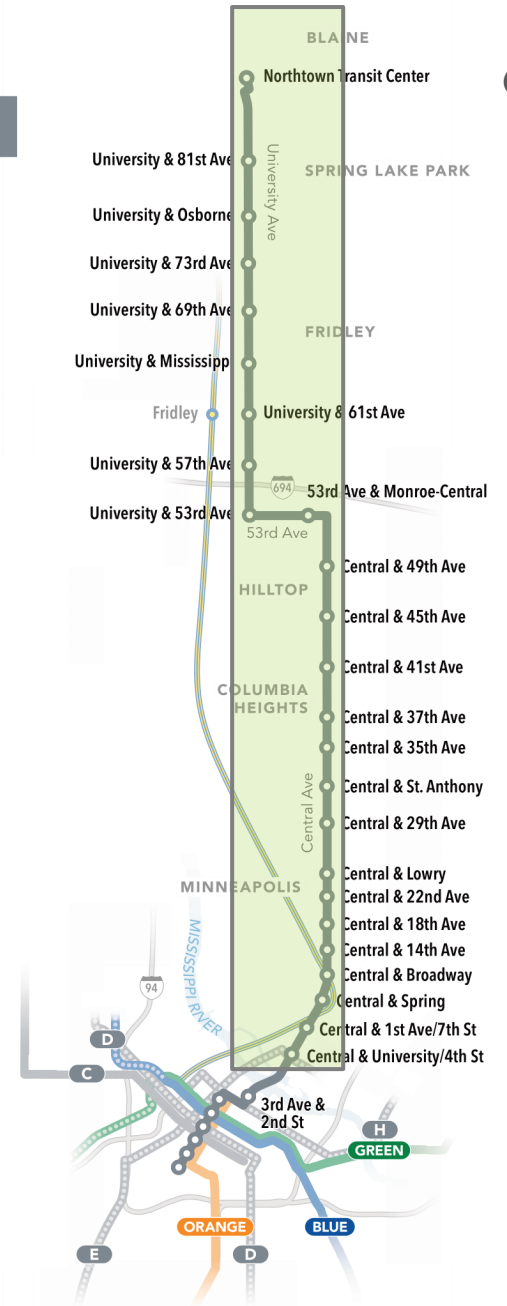
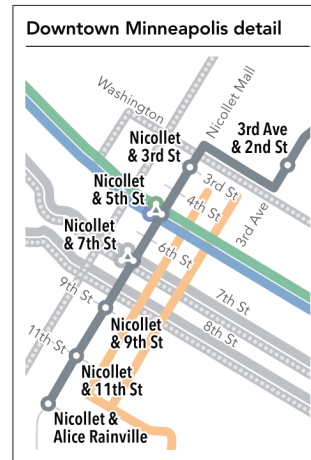
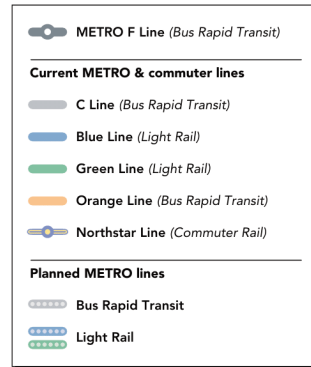
- Coordinating design with several projects from MnDOT, county and city partners
- MnDOT: Hwy 47 and Hwy 65 Planning and Environmental Linkages (PEL) Study
 - Evaluating broader multimodal alternatives to improve safety and mobility
 - Higher-level concepts, narrowing options
 - Timing of project outcomes uncertain
 - Close collaboration to ensure compatibility

Learn more about MnDOT's PEL Study
talk.dot.state.mn.us/hwy-47-hwy-65-study



F Line

MnDOT PEL Study Area



Help us plan station locations



Draft Corridor Plan – seeking input now!

- Identifies proposed station locations
- Early, important opportunity for community input
- Addresses key station location questions:
 - What intersections will have BRT stations?
 - In which quadrants (corners) of the intersections will the platforms be located?
 - How was the location determined?

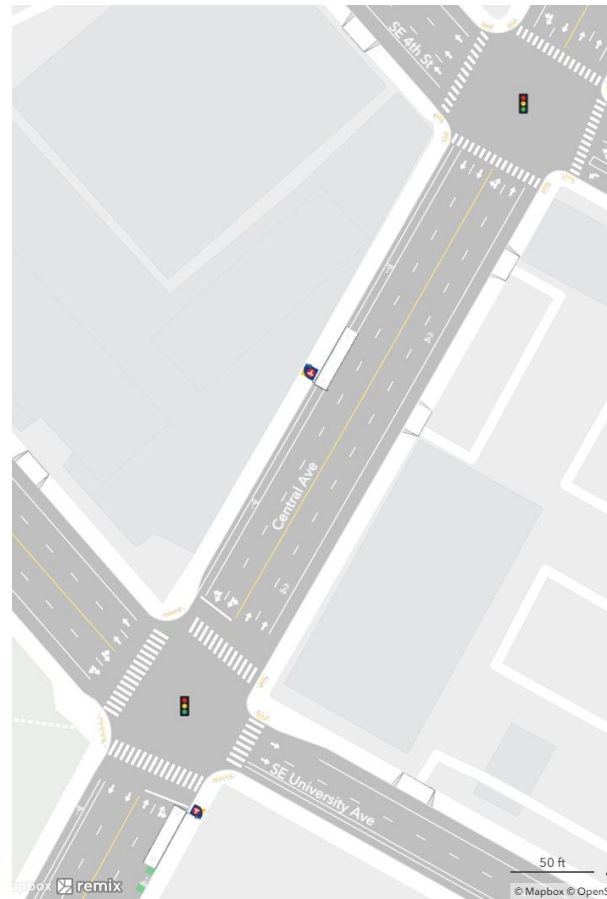


Draft Corridor Plan

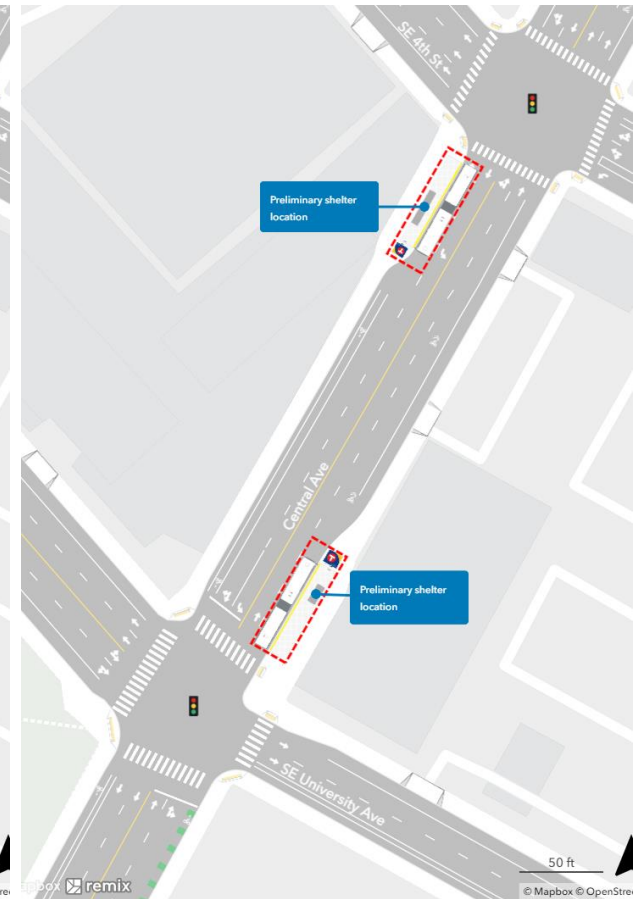
- Proposed platform locations developed through site-specific review
- Concept designs will evolve and be refined through engineering and coordination
- Other planning issues (ongoing)
 - Opportunities and priorities for bus priority treatments to meet speed and reliability goals
 - Supporting local service

Central Avenue & University/4th Street

Existing Station Area



Proposed Station Plan



Public engagement

- Spring-fall 2022: Raised awareness about the project
- **Public comment period: October 24 – December 5**
- Available now on the project website:
 - Key project information
 - Draft Corridor Plan (full document)
 - Station concepts
 - **Survey** to provide feedback on specific stations

metrotransit.org/f-line-project



Out in the community

- Meet Route 10 riders at stops and aboard buses
- Door knock and distribute flyers to all homes and businesses near proposed station locations
- Direct mailing to all homes, businesses, and property owners along the corridor
- Email: Project newsletter, Route 10 Rider Alerts, Route 10 Go-To card users, Riders Club, etc.
- Partner with neighborhood, community, business, and advocacy groups
- Translation of documents in Spanish, Somali, Hmong, Oromo, and Arabic
- Tabling at community events
- Social media



**Changes coming to Route 10 in 2026.
Metro Transit is planning F Line station locations.**

COMMENT NOW!
metrotransit.org/F-Line-Project



Se avecinan cambios en la Ruta 10 en 2026. Metro Transit planea la ubicación de las estaciones de la línea F. ¡Comparta sus opiniones!

Isbeddelo ayaa ku imanaya Jidka 10 sannadka 2026. Metro Transit waxa ay qorshaynaysaa goobaha Saldhigga leen F. La wadaag ra'yi-celintaada!

2026 yuuv muaj Kev hloov rau Npav 10. Metro Transit tabtom npaj Npav F cov chaw samthiaj tos. Thov qhia seb nej xav li cas!

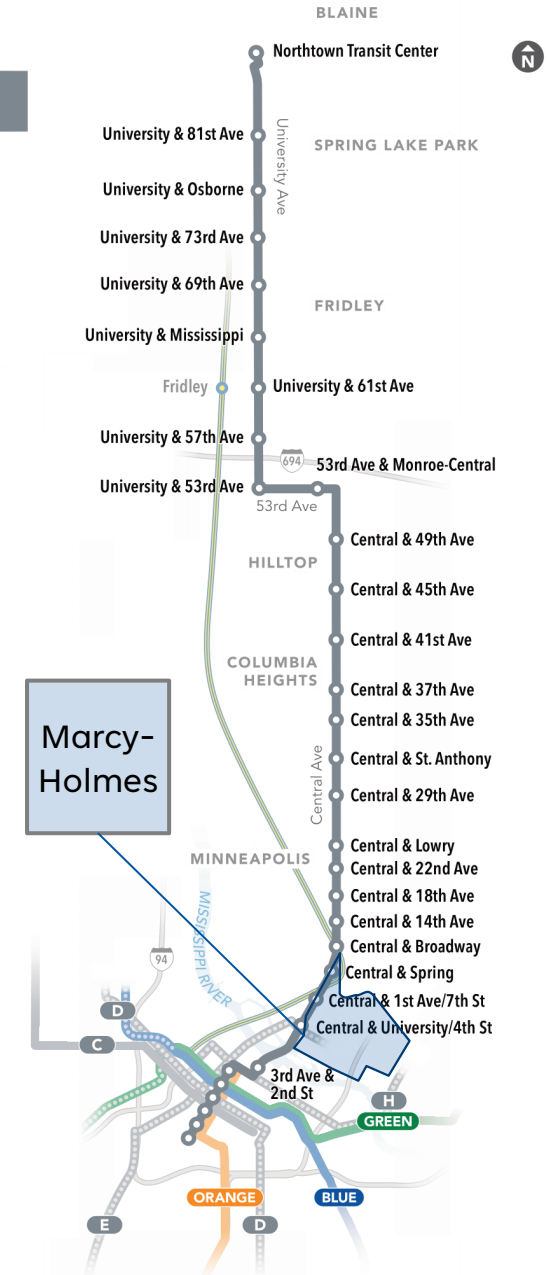
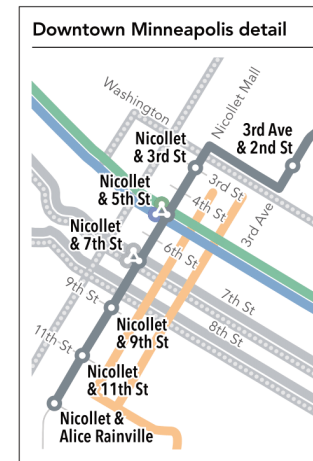
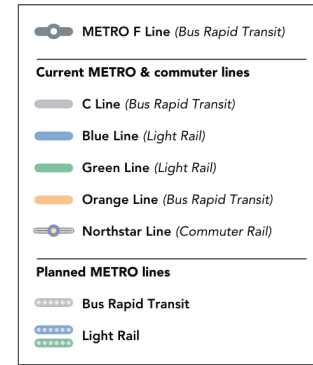
**عقاروم Metro Transit ططخت 2026 يف 10 راسم وراغ تاوييغت آرطتس
ططخت 10 تااطم F**

Jijjiramoota bara 2026 keessa Daandii 10ffaatti dhufaa jiran. Meetiroo Tiraanzit bakkeewwan Buufata Toora F karoorsaa jira. Duubdeebii keessan nuuf qoodaa!



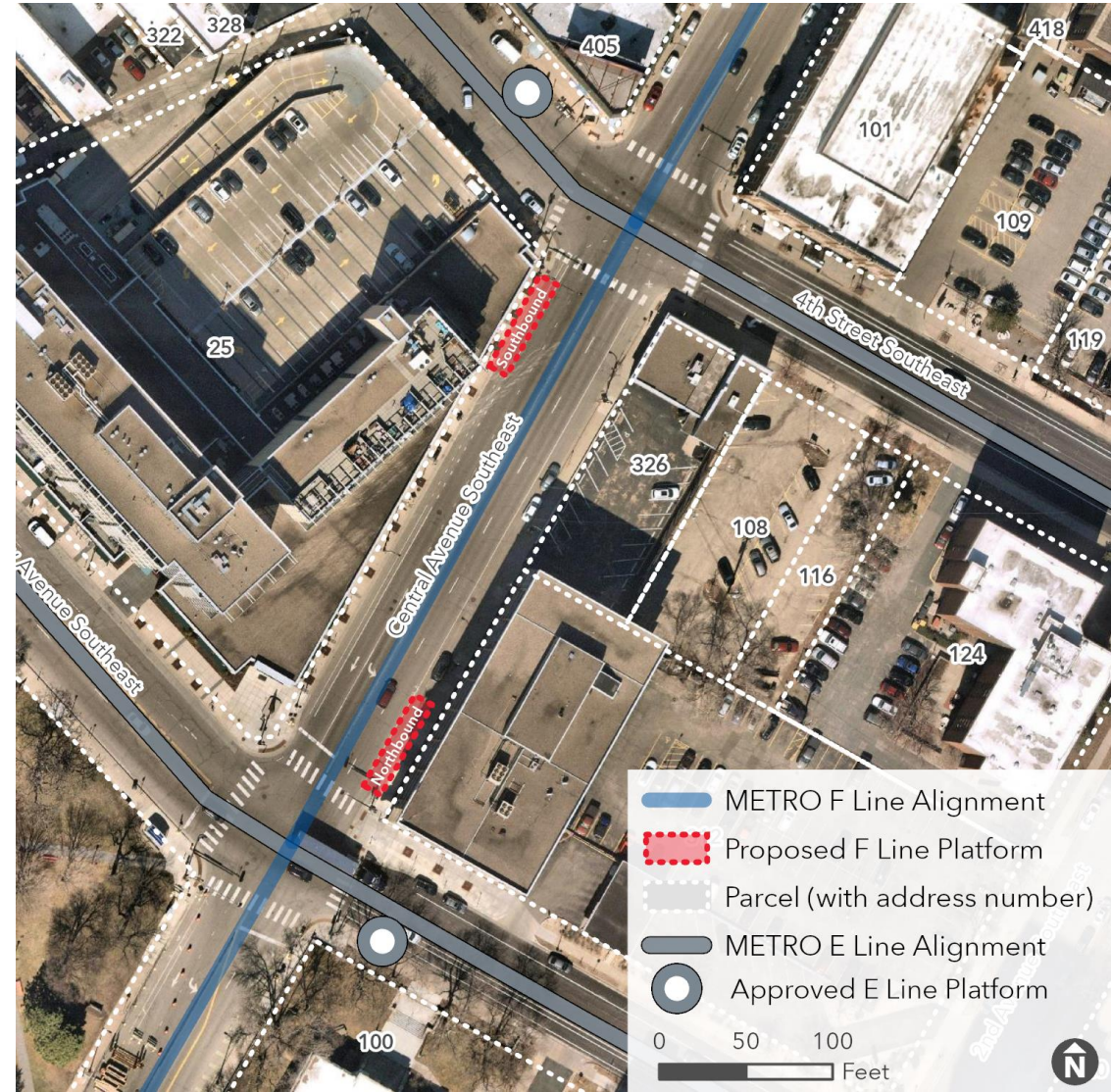
Station Locations

- 32 stations, 25 built by the project
 - 3 new stations proposed on Central in the Marcy-Holmes neighborhood
- Considerations
 - Spacing between stations
 - Existing ridership
 - Connecting transit service
 - Community input
 - Land use and access to destinations
 - Street design and available right-of-way



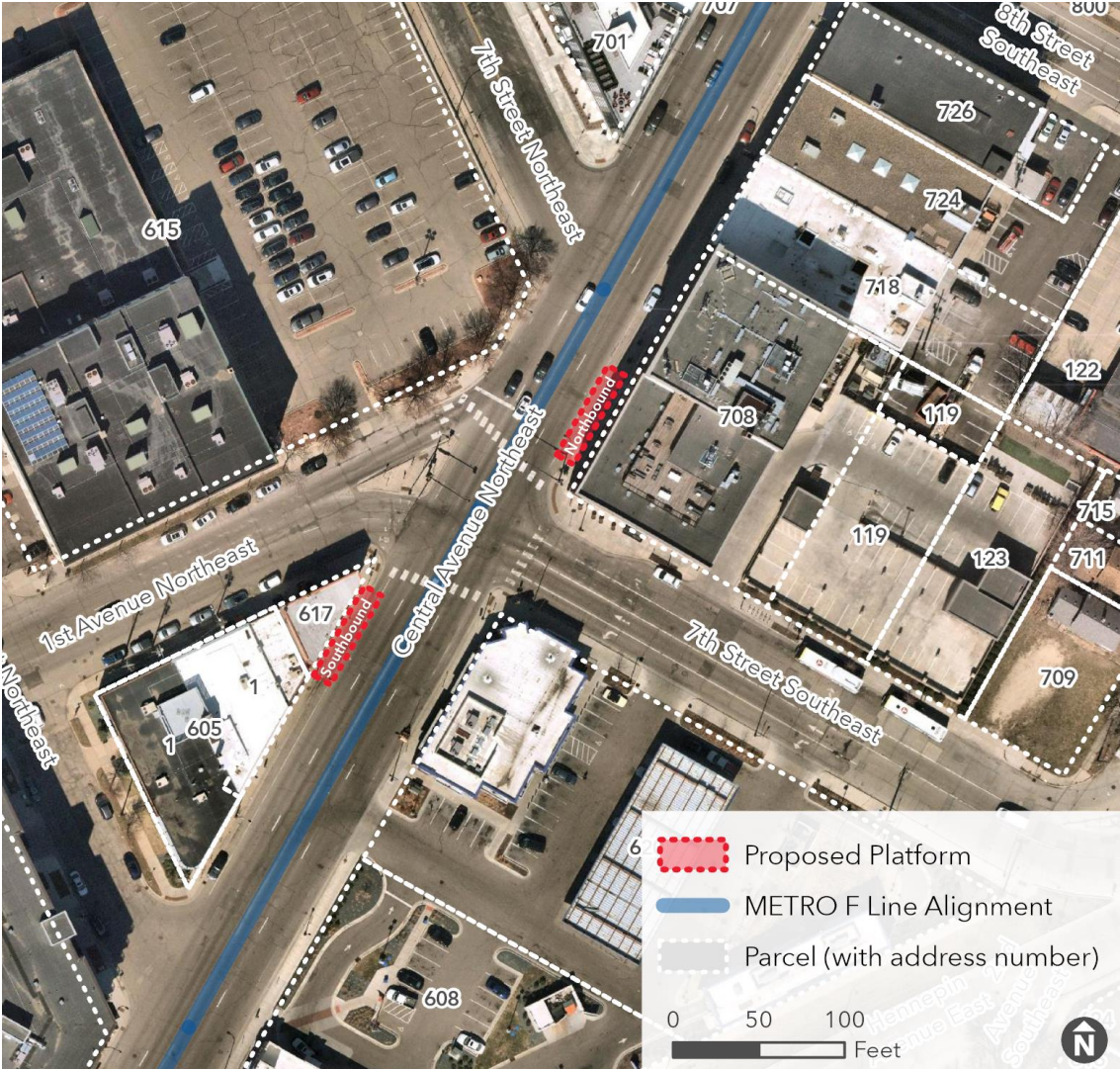
Central & University/4th St

- **Proposed** platform locations differ from existing Route 10 bus stops
- Northbound farside (NE corner) of University
- Southbound farside (SW corner) of 4th St
- Transfers to METRO E Line
- Coordination with MnDOT PEL Study



Central & 1st Ave NE/7th St SE

- **Proposed** platform locations differ from existing Route 10 bus stops
- Northbound farside (NE corner) of 7th St SE
- Southbound farside (SW corner) of 1st Ave NE
- Coordination with Hennepin & First project and MnDOT PEL Study



Central & Spring

- Platforms **proposed** at existing Route 10 bus stops
- Exploring potential closure/slimming of 3rd Avenue from Central Avenue to accommodate northbound platform
 - Maintaining access to 3rd Ave from Spring
 - Engaging business and property owners
- Coordination with MnDOT PEL Study



Corridor Plan next steps

We are here



Seeking community input to establish station locations

Community engagement

Time

Help us plan F Line station locations

- Public comment period: **October 24 – December 5**
- Review the Draft Corridor Plan and submit comments
 - Survey at metrotransit.org/f-line-project
 - Email FLine@metrotransit.org
 - Call Nasser Mussa, Community Outreach Coordinator at 651-829-5305
- F Line Update newsletter sign-up
- Virtual open house Nov. 15, 6:30-8:00 (register on the project website)



Thank You!

Jake Knight

Senior Planner

jake.knight@metrotransit.org

Nasser Mussa

Community Outreach Coordinator

nasser.mussa@metrotransit.org