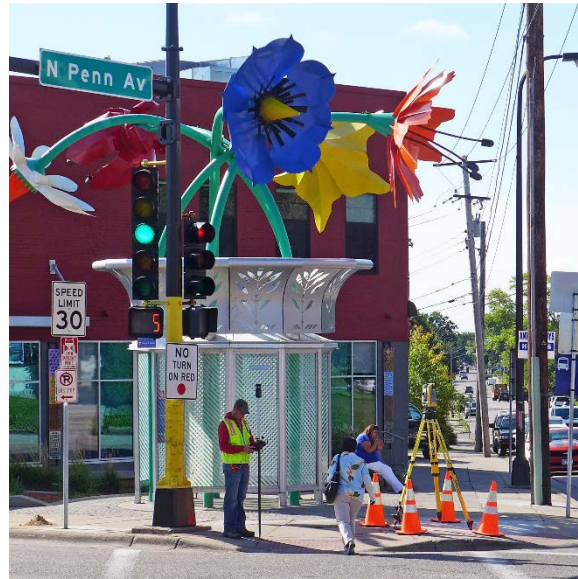


C Line Preliminary Design Update



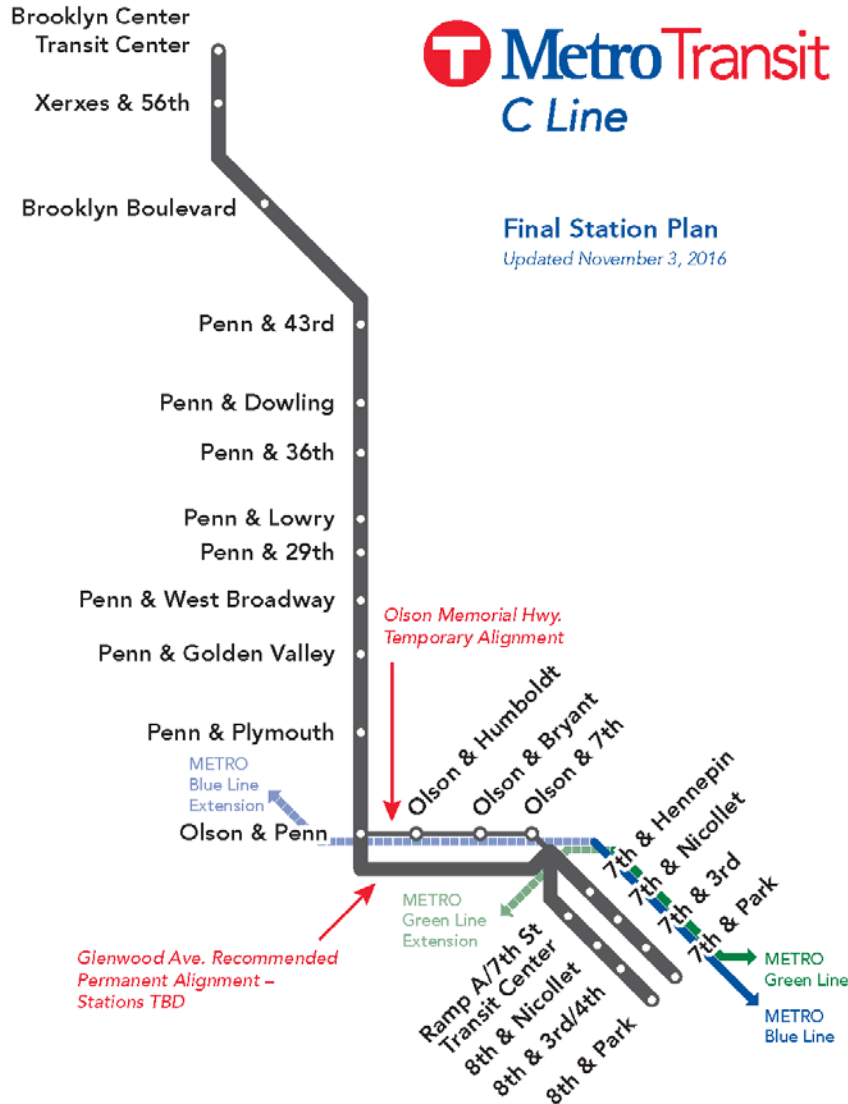
C Terrence Anderson, Community Outreach Coordinator
cterrence.anderson@metrotransit.org

January 9, 2017

What is the C Line?

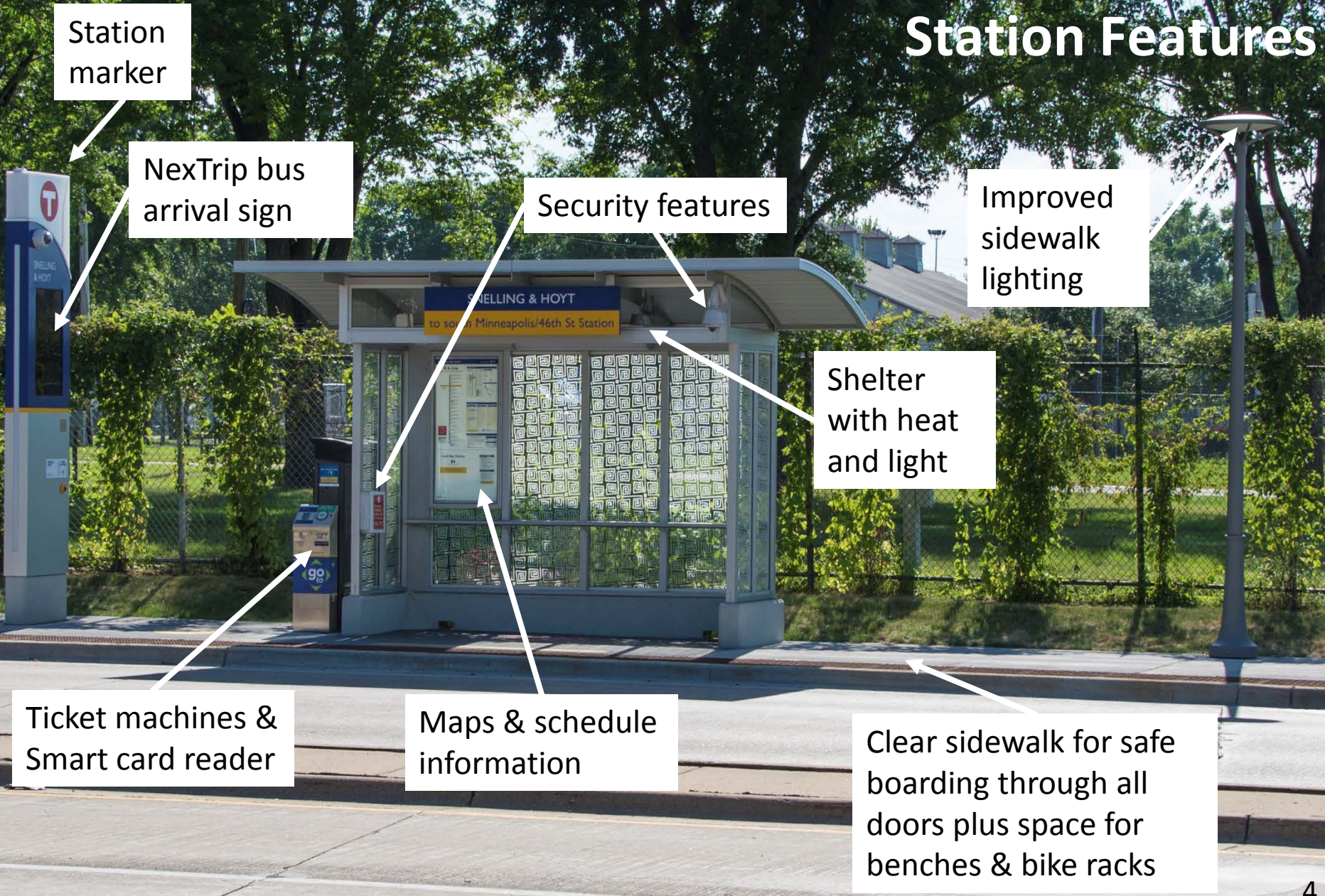


- Region's second rapid bus line
- Upgrade to Route 19
 - 23 enhanced stations
 - Limited stops
 - Larger buses
 - Faster, frequent service
 - Pay before boarding, enter through any door
- Some local bus service remains



- 23 station locations approved Spring 2016 after planning & community input
- Significant coordinated street improvements on Penn Avenue and 8th Street
- Long-term realignment to Glenwood Avenue

Station Features



Station marker

NexTrip bus arrival sign

Security features

Improved sidewalk lighting

Shelter with heat and light

Ticket machines & Smart card reader

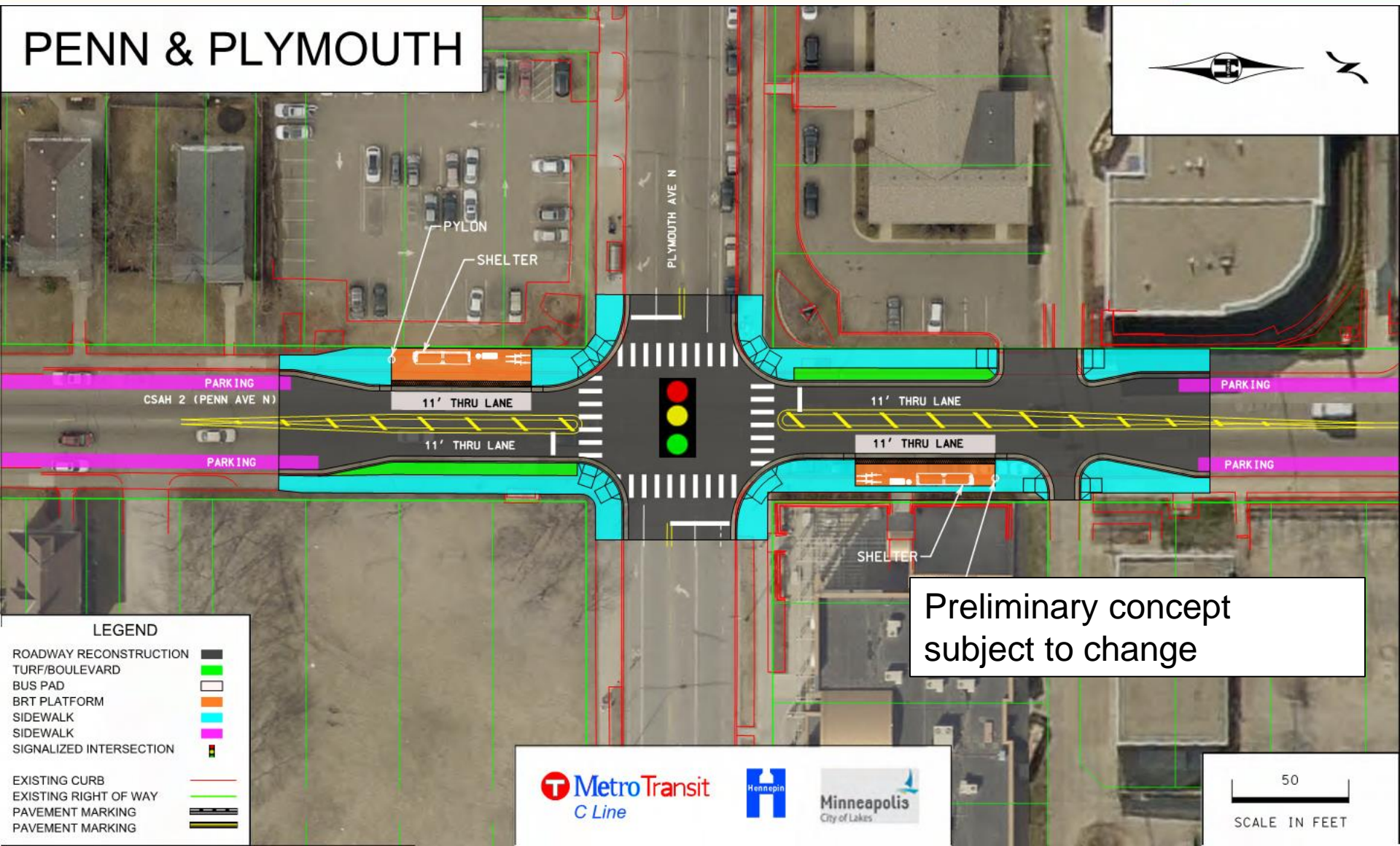
Maps & schedule information

Clear sidewalk for safe boarding through all doors plus space for benches & bike racks

Penn and Plymouth Stations



PENN & PLYMOUTH



Preliminary concept
subject to change

LEGEND

- ROADWAY RECONSTRUCTION
- TURF/BOULEVARD
- BUS PAD
- BRT PLATFORM
- SIDEWALK
- SIDEWALK
- SIGNALIZED INTERSECTION

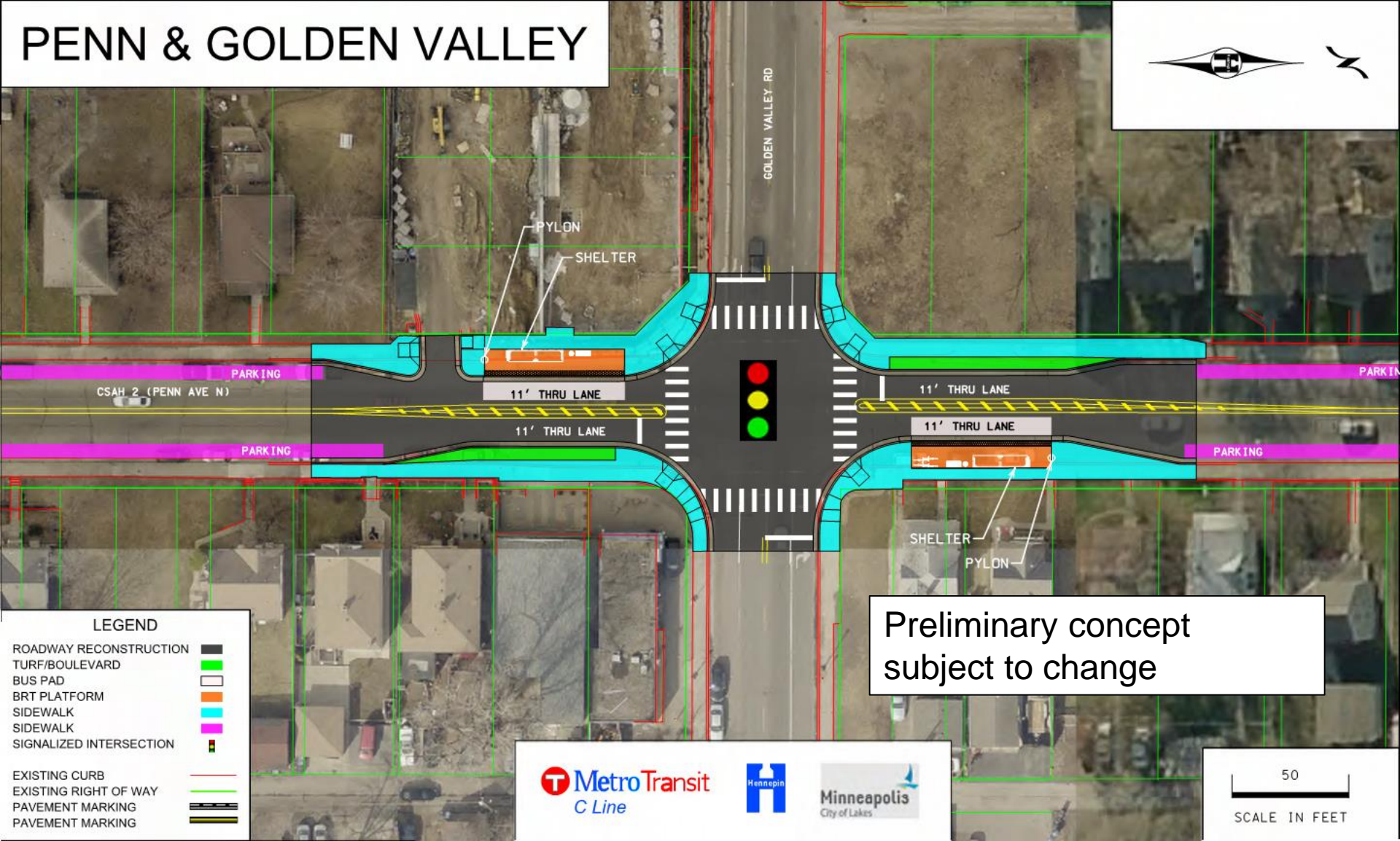
- EXISTING CURB
- EXISTING RIGHT OF WAY
- PAVEMENT MARKING
- PAVEMENT MARKING



Penn and Golden Valley Stations



PENN & GOLDEN VALLEY



Preliminary concept
subject to change

LEGEND

- ROADWAY RECONSTRUCTION
- TURF/BOULEVARD
- BUS PAD
- BRT PLATFORM
- SIDEWALK
- SIDEWALK
- SIGNALIZED INTERSECTION

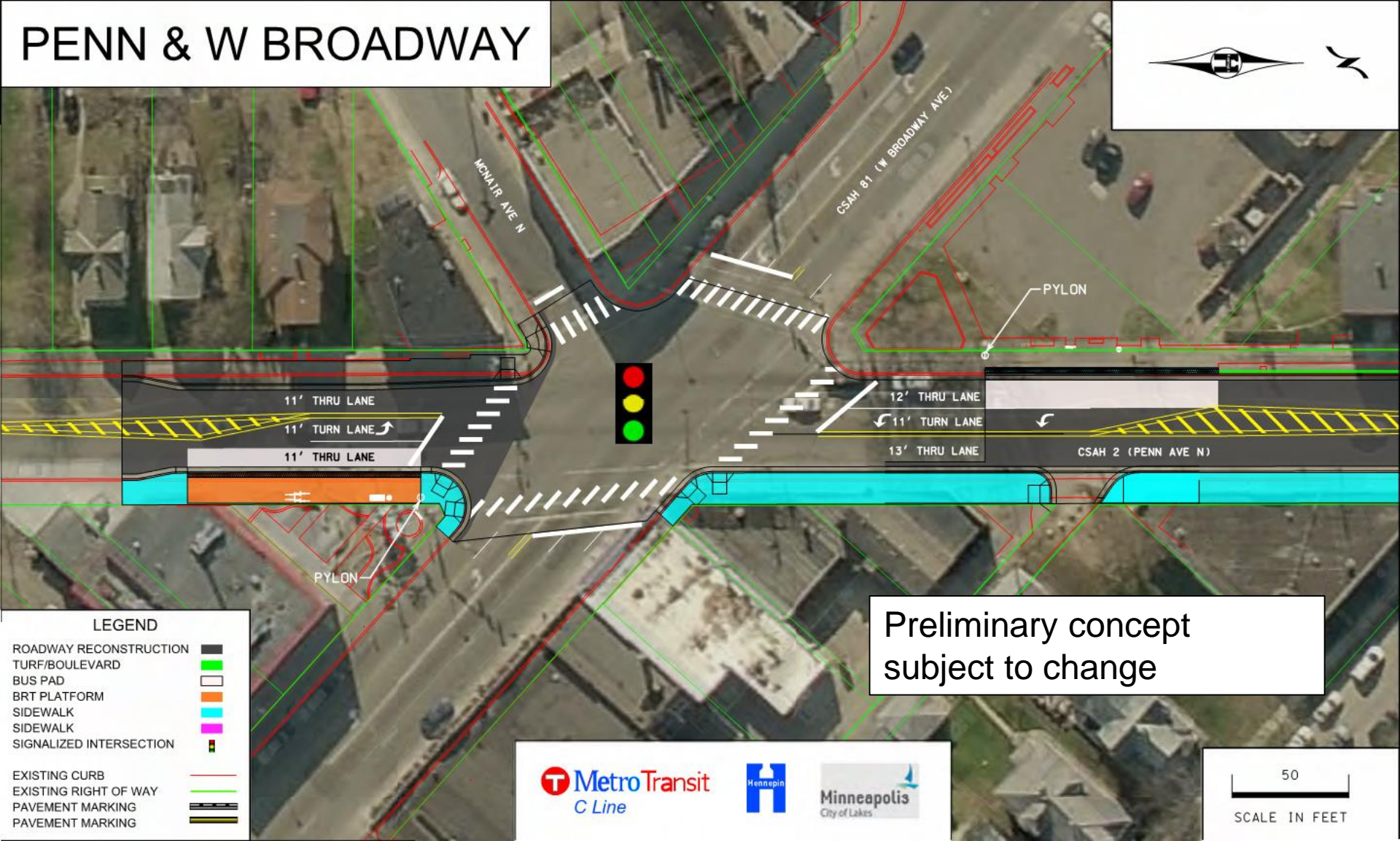
- EXISTING CURB
- EXISTING RIGHT OF WAY
- PAVEMENT MARKING
- PAVEMENT MARKING



Penn and West Broadway Stations



PENN & W BROADWAY



Preliminary concept
subject to change

LEGEND

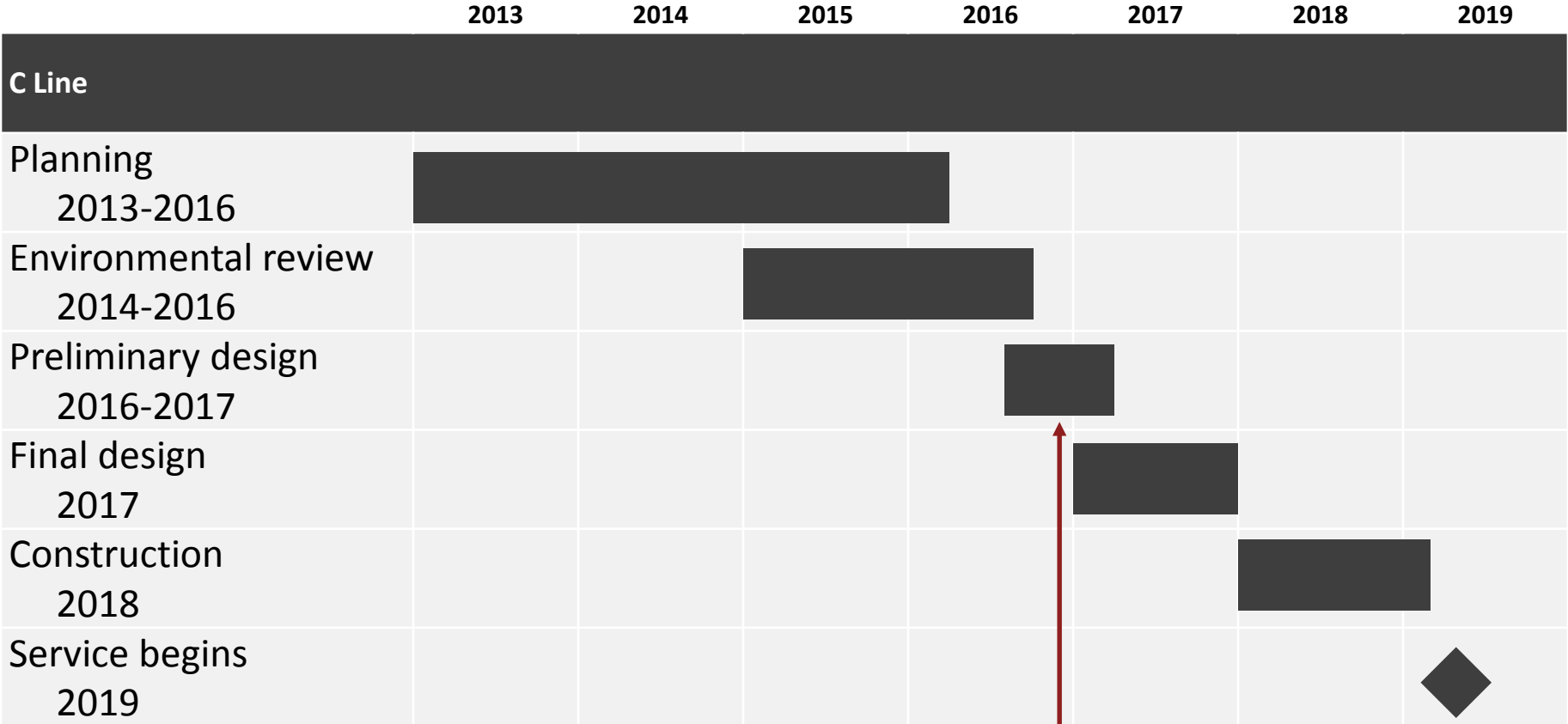
- ROADWAY RECONSTRUCTION
- TURF/BOULEVARD
- BUS PAD
- BRT PLATFORM
- SIDEWALK
- SIDEWALK
- SIGNALIZED INTERSECTION

- EXISTING CURB
- EXISTING RIGHT OF WAY
- PAVEMENT MARKING
- PAVEMENT MARKING



C Line Schedule

Subject to change based on full funding availability



We are here

We're seeking your feedback tonight on:

- Curb lines and shelter placement on 7th Street Stations before taking plans for layout approval

How to comment

- **TONIGHT**
Fill out comment form
- **BEFORE JANUARY 20**
Via email:
brtprojects@metrotransit.org