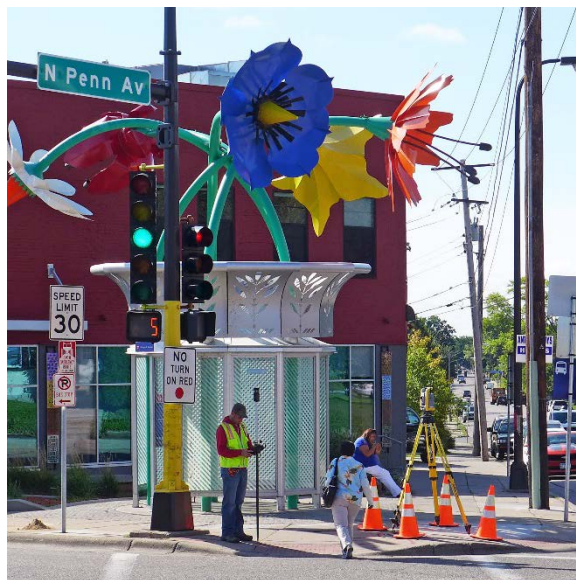


C Line

Preliminary Design Update



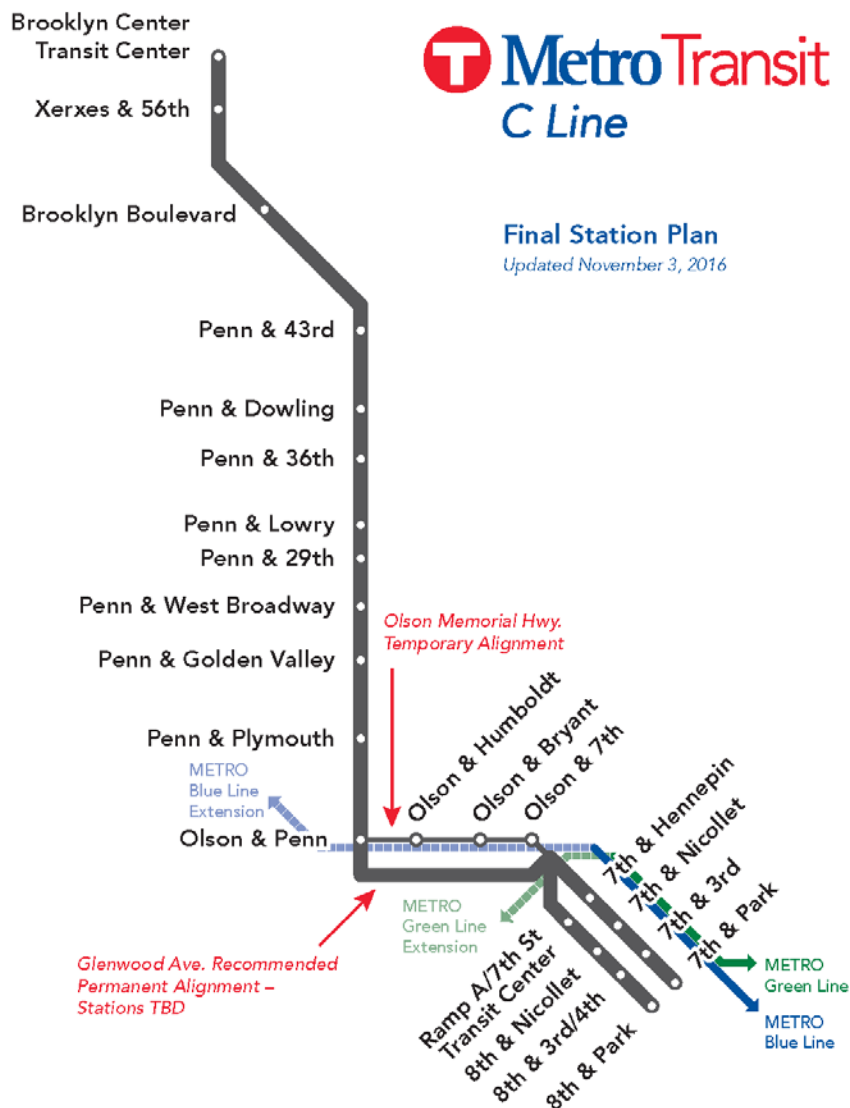
C Terrence Anderson, Community Outreach Coordinator
cterrence.anderson@metrotransit.org

January 5, 2017

What is the C Line?

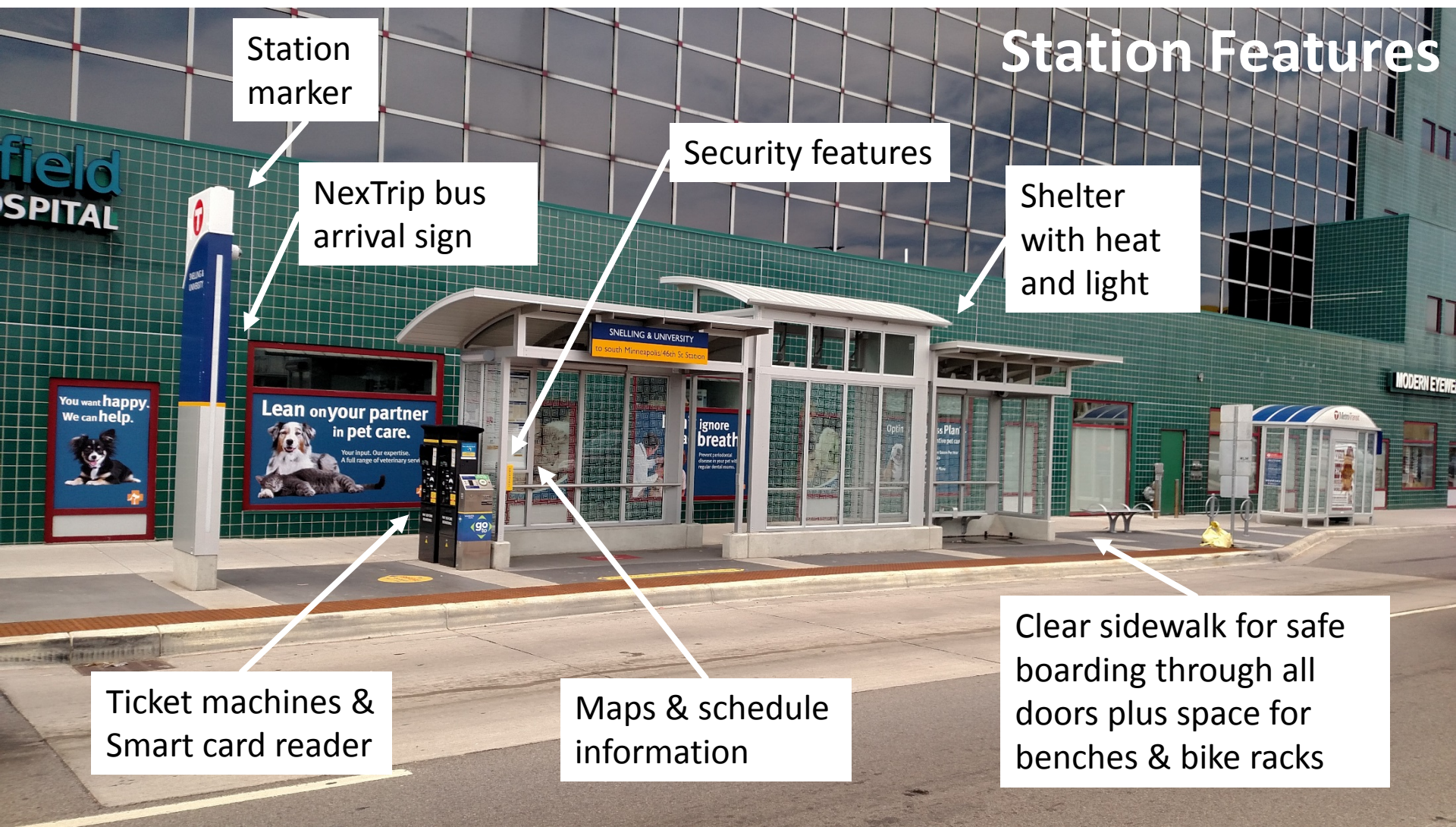


- Region's second rapid bus line
- Upgrade to Route 19
 - 23 enhanced stations
 - Limited stops
 - Larger buses
 - Faster, frequent service
 - Pay before boarding, enter through any door
- Some local bus service remains



- 23 station locations approved Spring 2016 after planning & community input
- Significant coordinated street improvements on Penn Avenue and 8th Street
- Long-term realignment to Glenwood Avenue

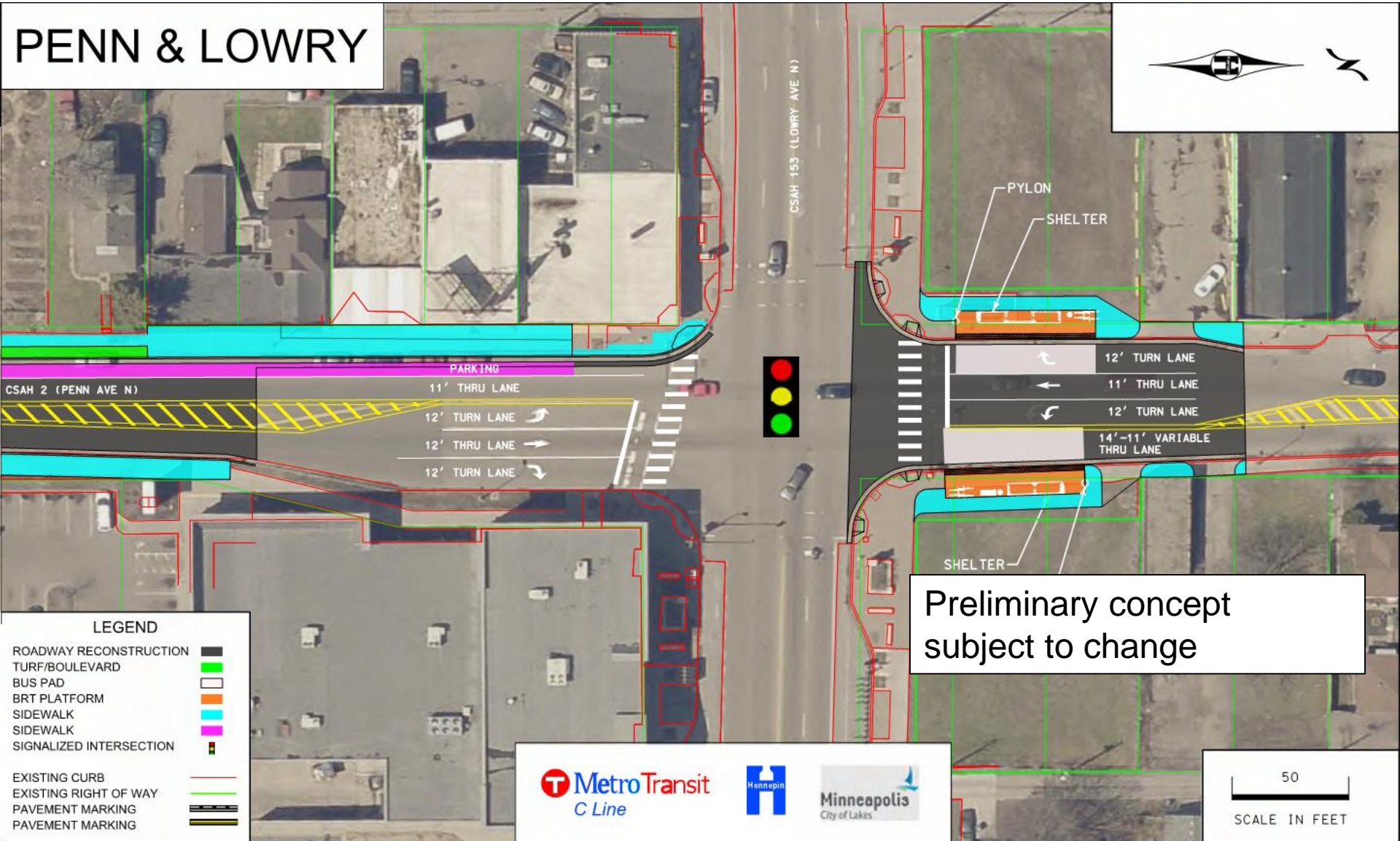
Station Features



Penn and Lowry Stations



PENN & LOWRY

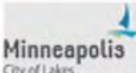
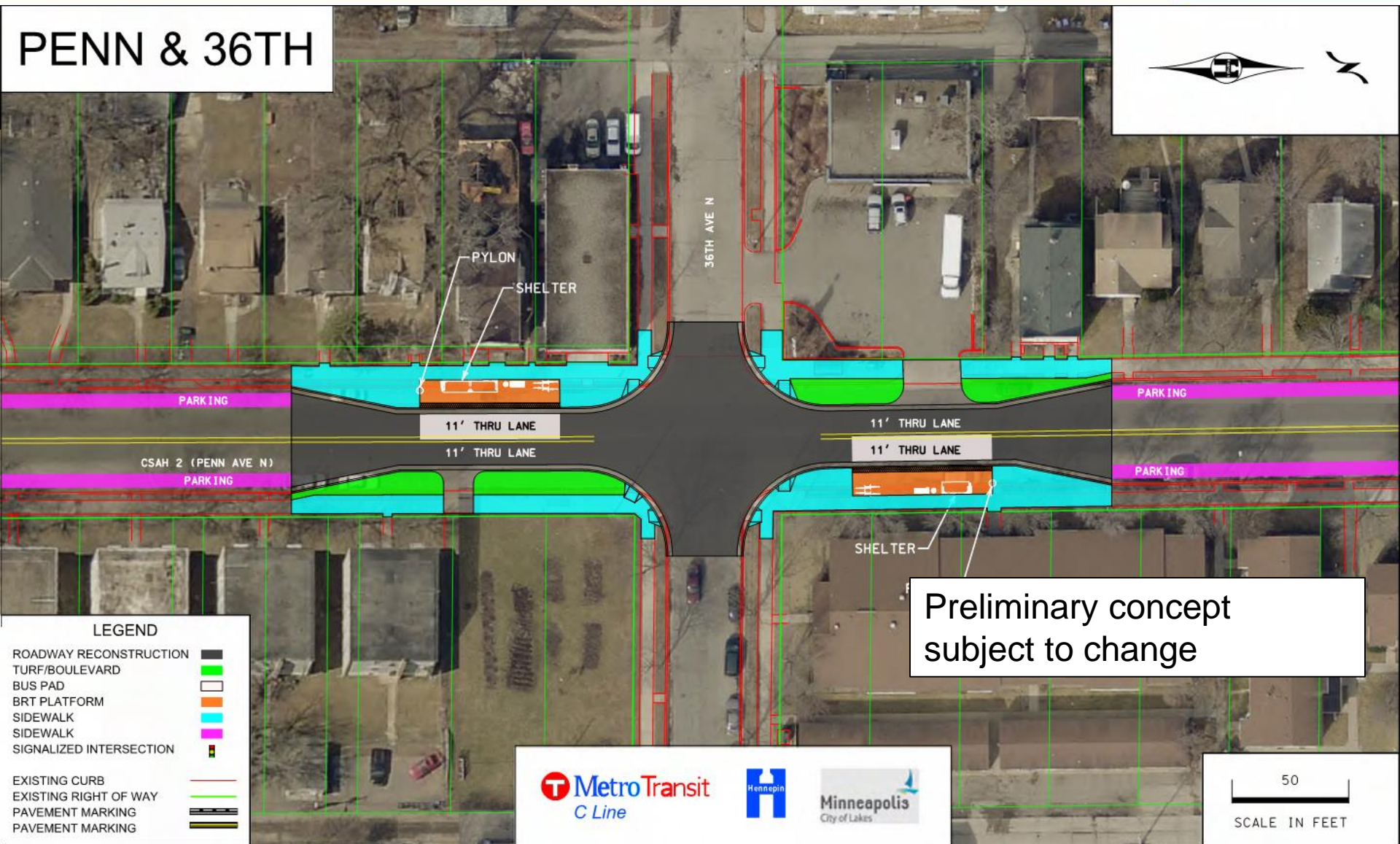


Preliminary concept
subject to change

Penn and 36th Avenue Stations



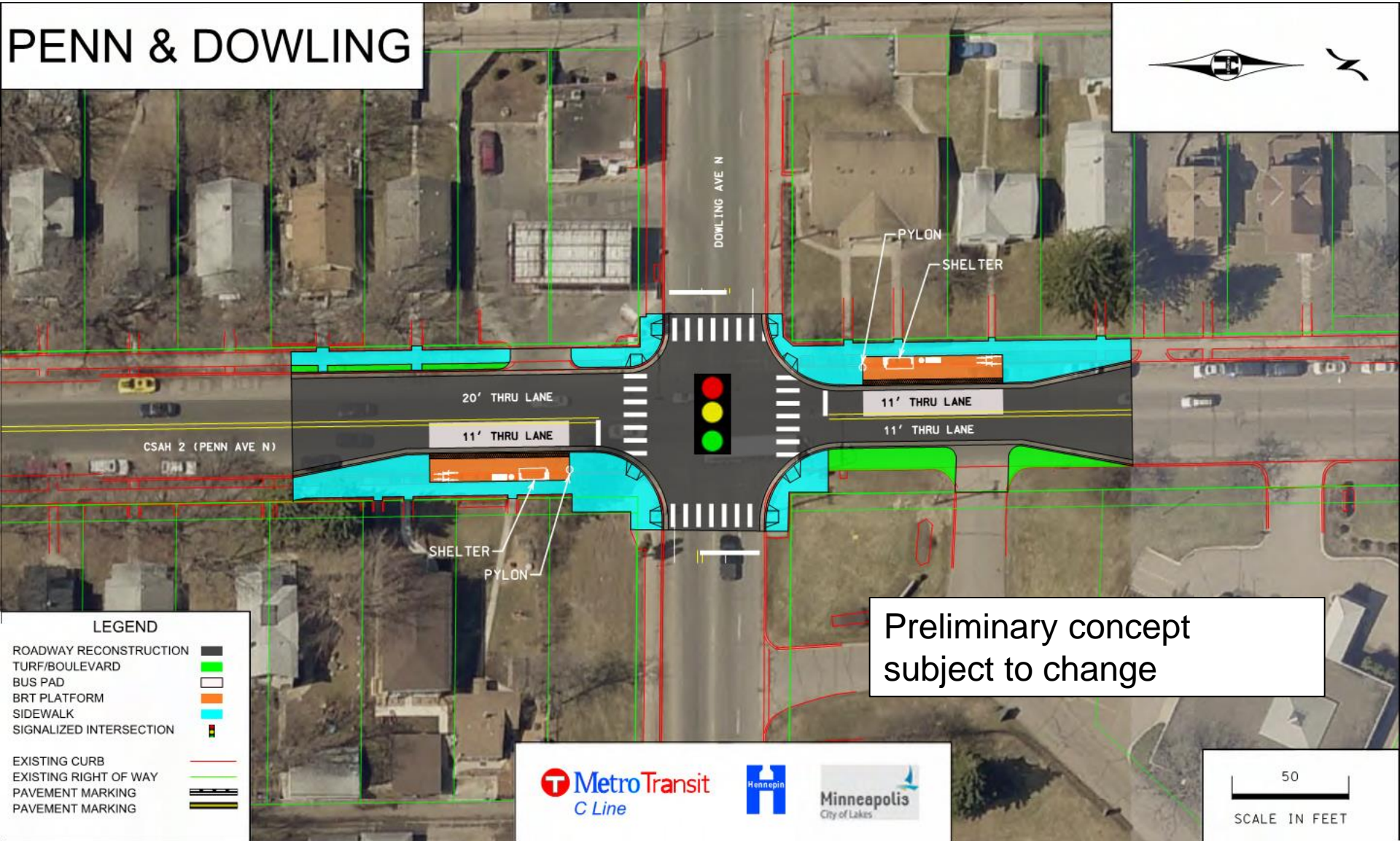
PENN & 36TH



Penn and Dowling Stations

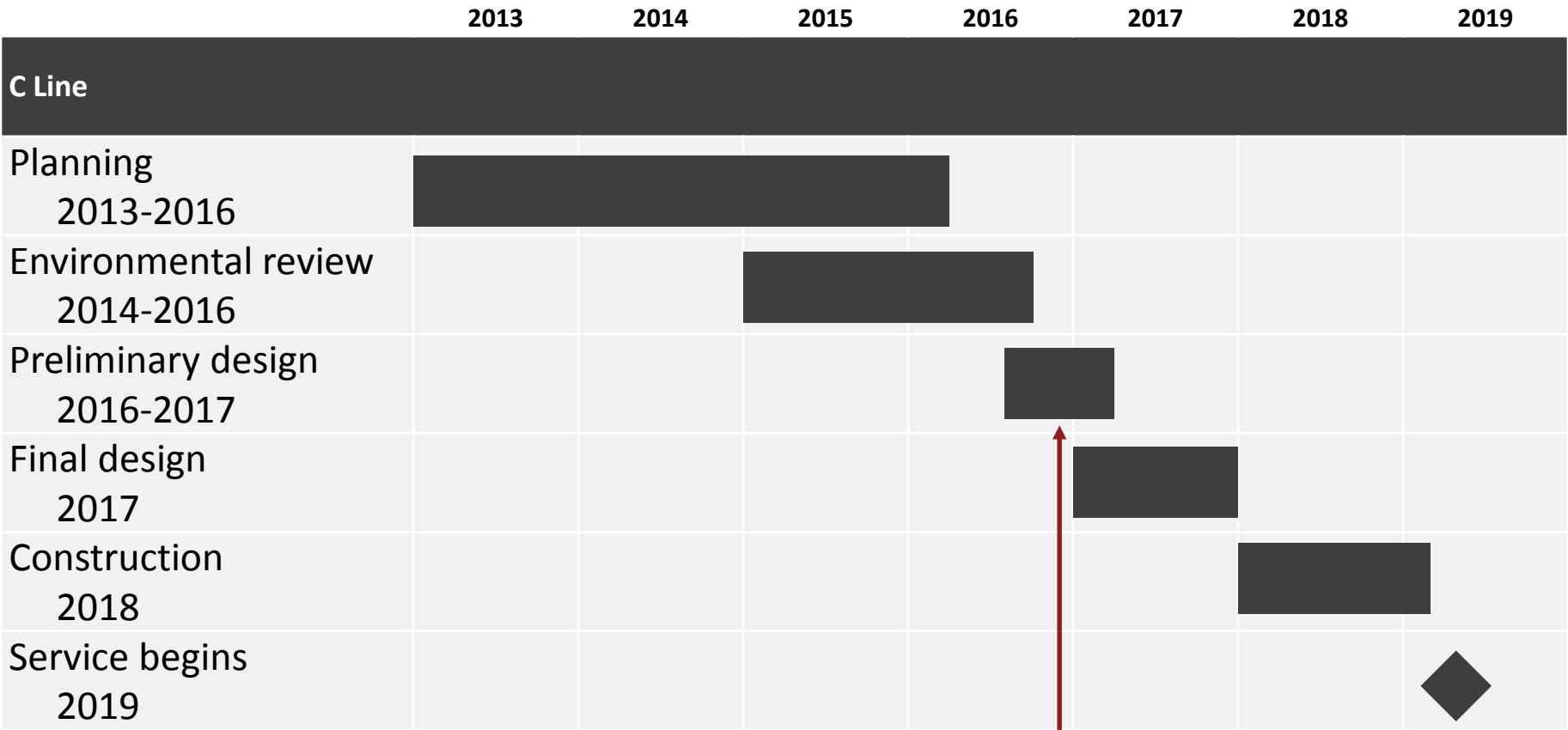


PENN & DOWLING



C Line Schedule

Subject to change based on full funding availability



We are here

We're seeking your feedback tonight on:

- Curb lines and shelter placement on 7th Street Stations before taking plans for layout approval

How to comment

- **TONIGHT**
Fill out comment form
- **BEFORE JANUARY 20**
Via email:
brtprojects@metrotransit.org