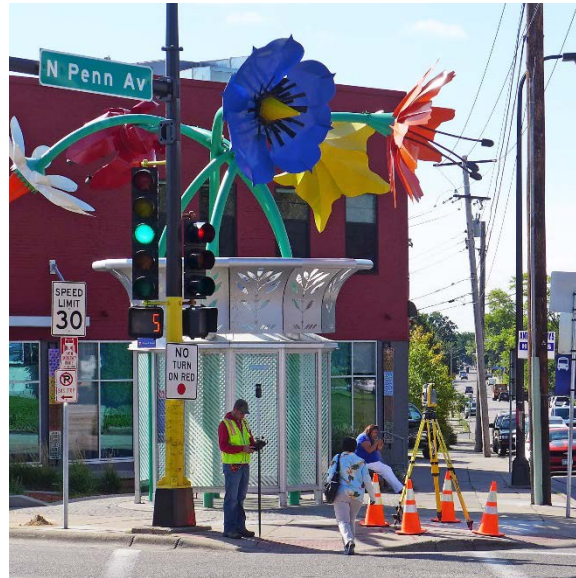


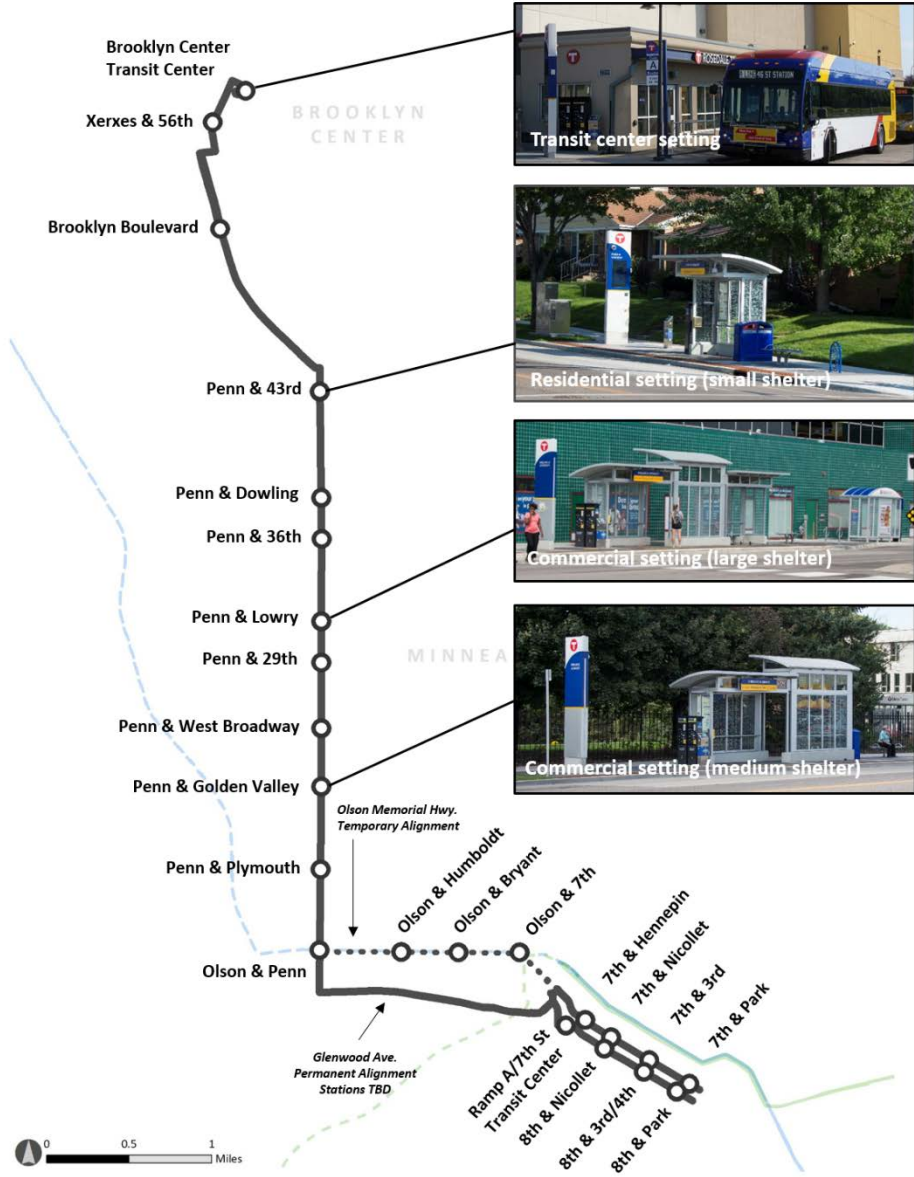
C Line: Preliminary Design and Long-Term Glenwood Realignment Recommendation



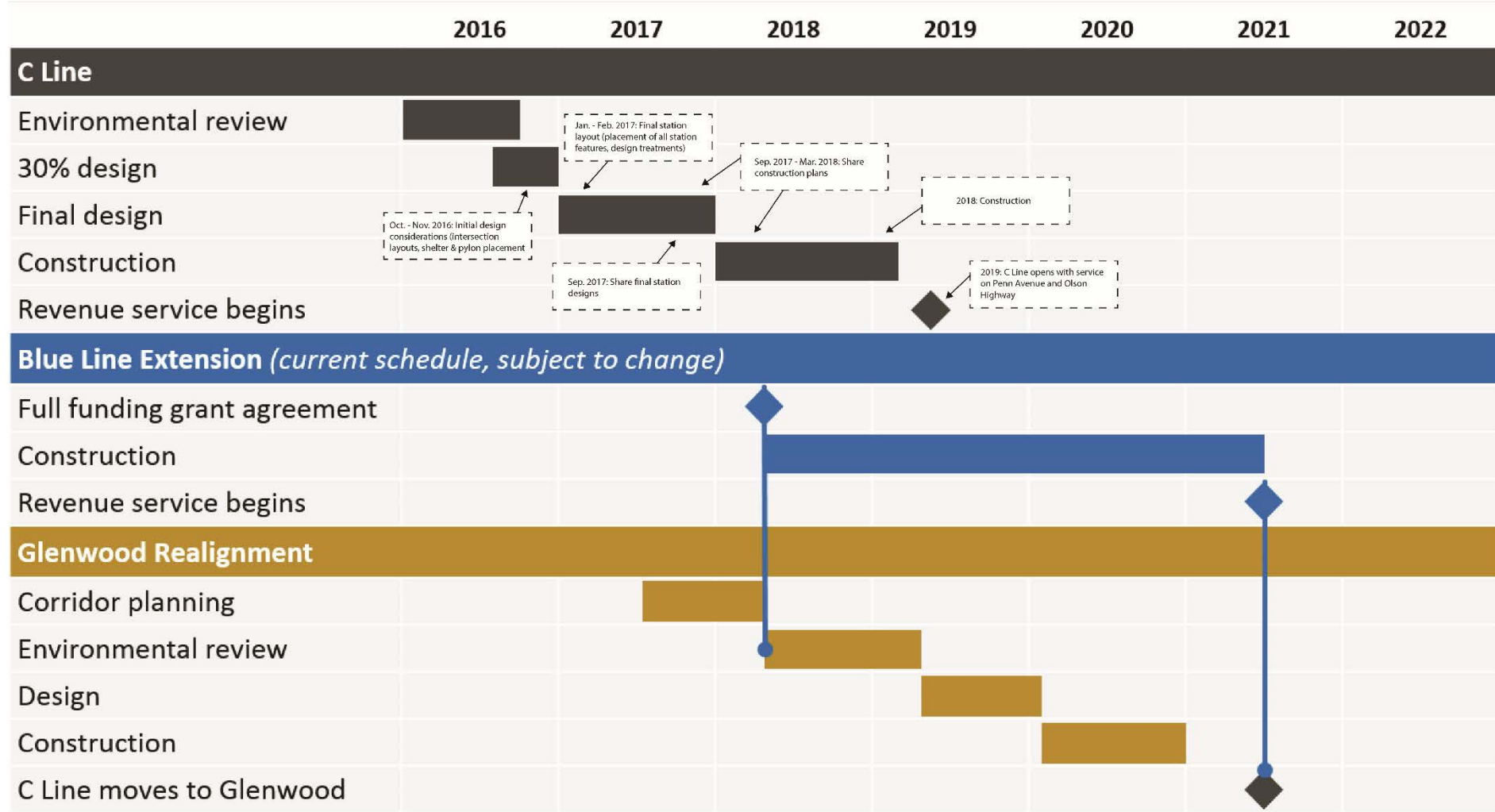
BRT/Small Starts Project Office
Metro Transit

October 2016

C Line Overview



C Line Implementation Schedule

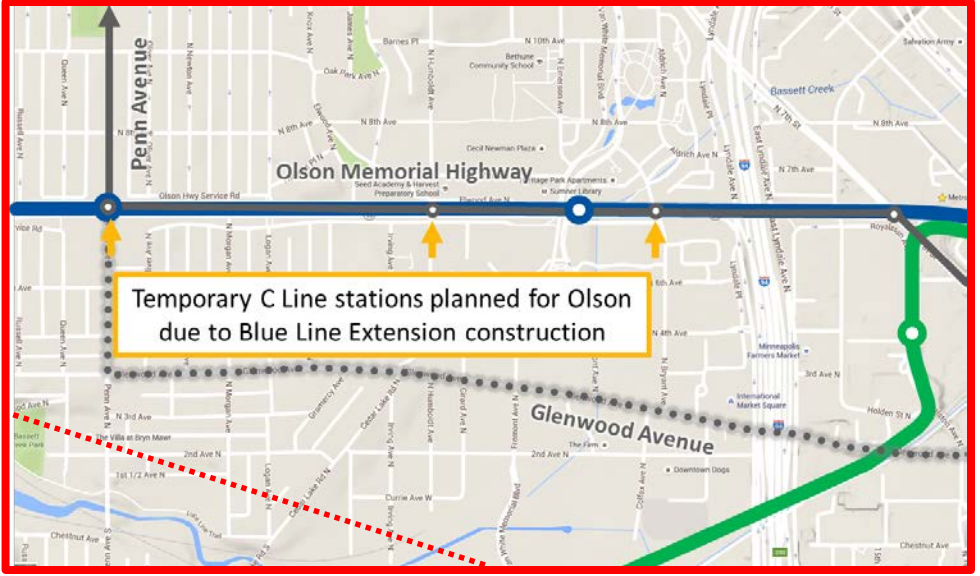
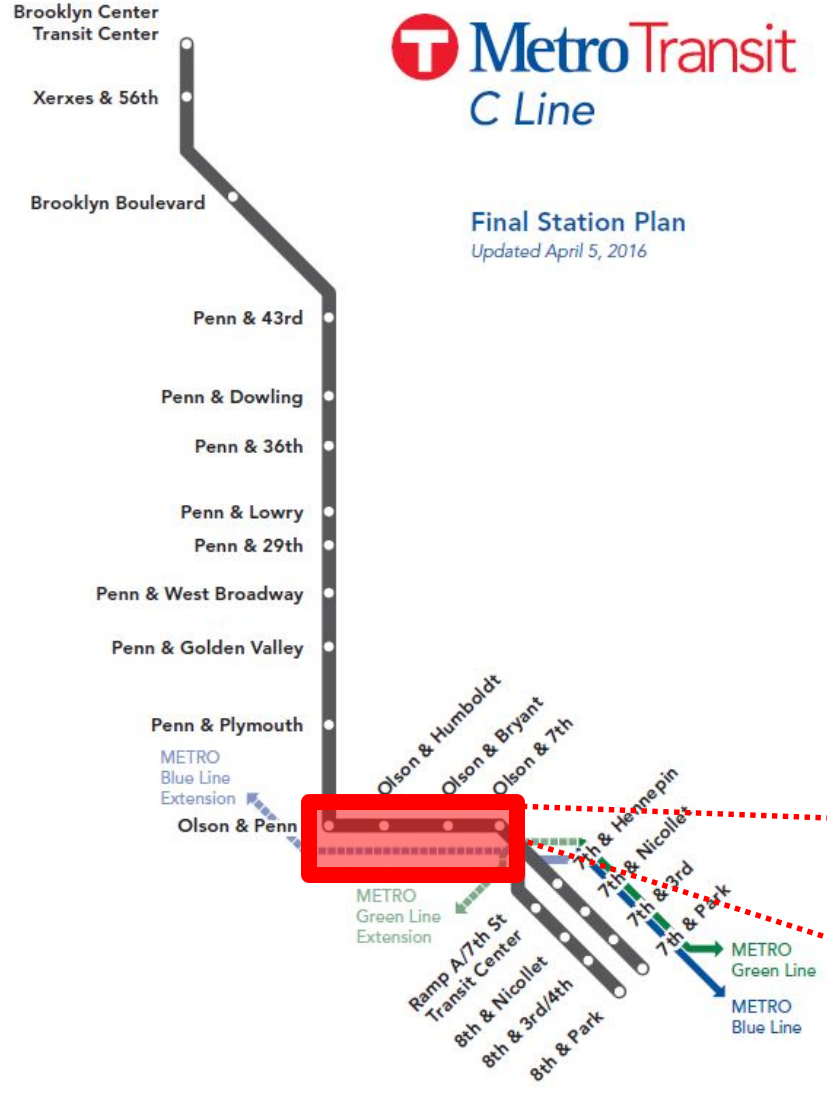


Temporary Stations on Olson Memorial Highway

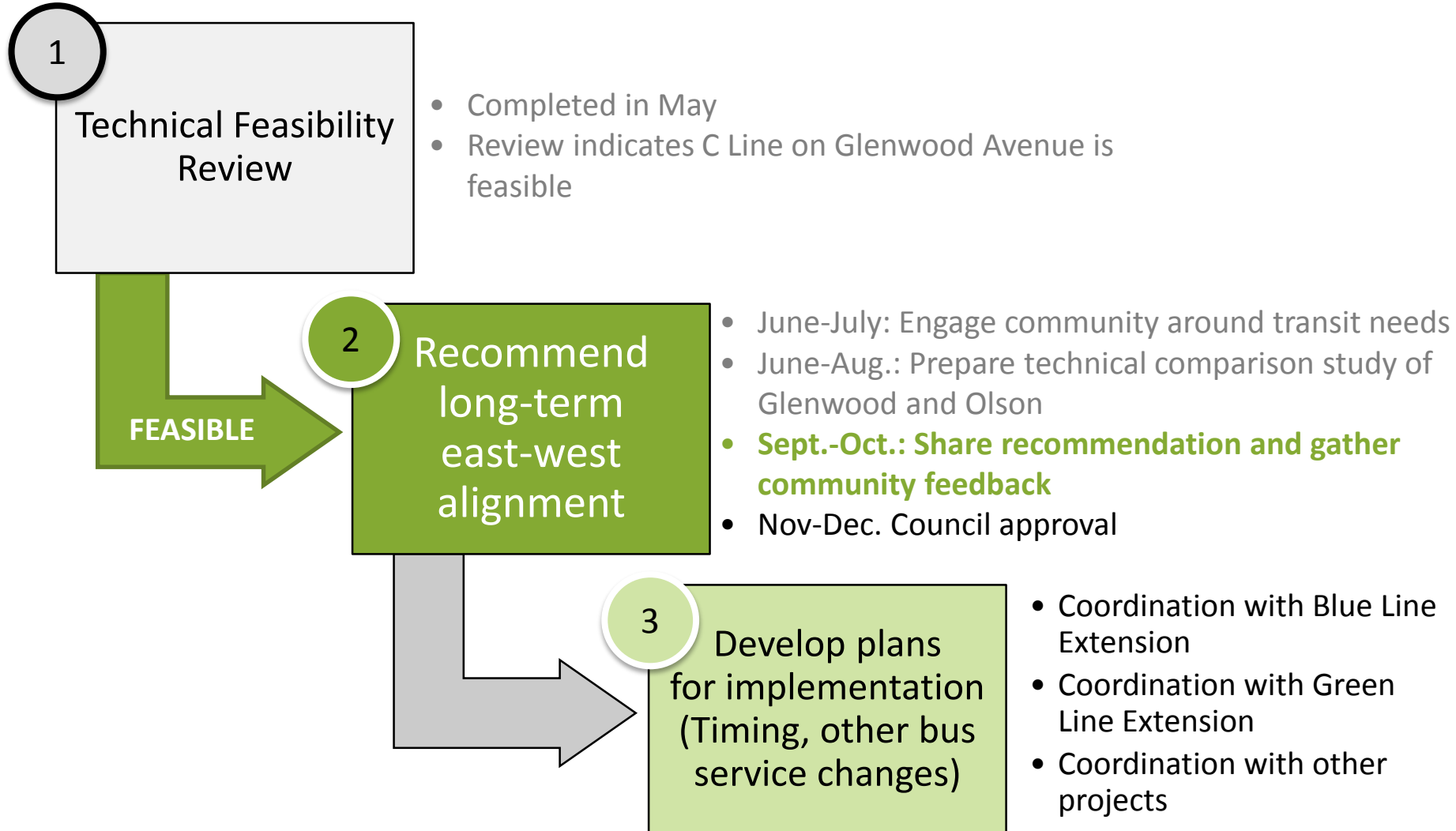


Final Station Plan
Updated April 5, 2016

- Construction will impact stations
- Community interest in exploring alternatives to Olson Highway for C Line



Glenwood Avenue: Long-Term Alignment Study



Alignments under study

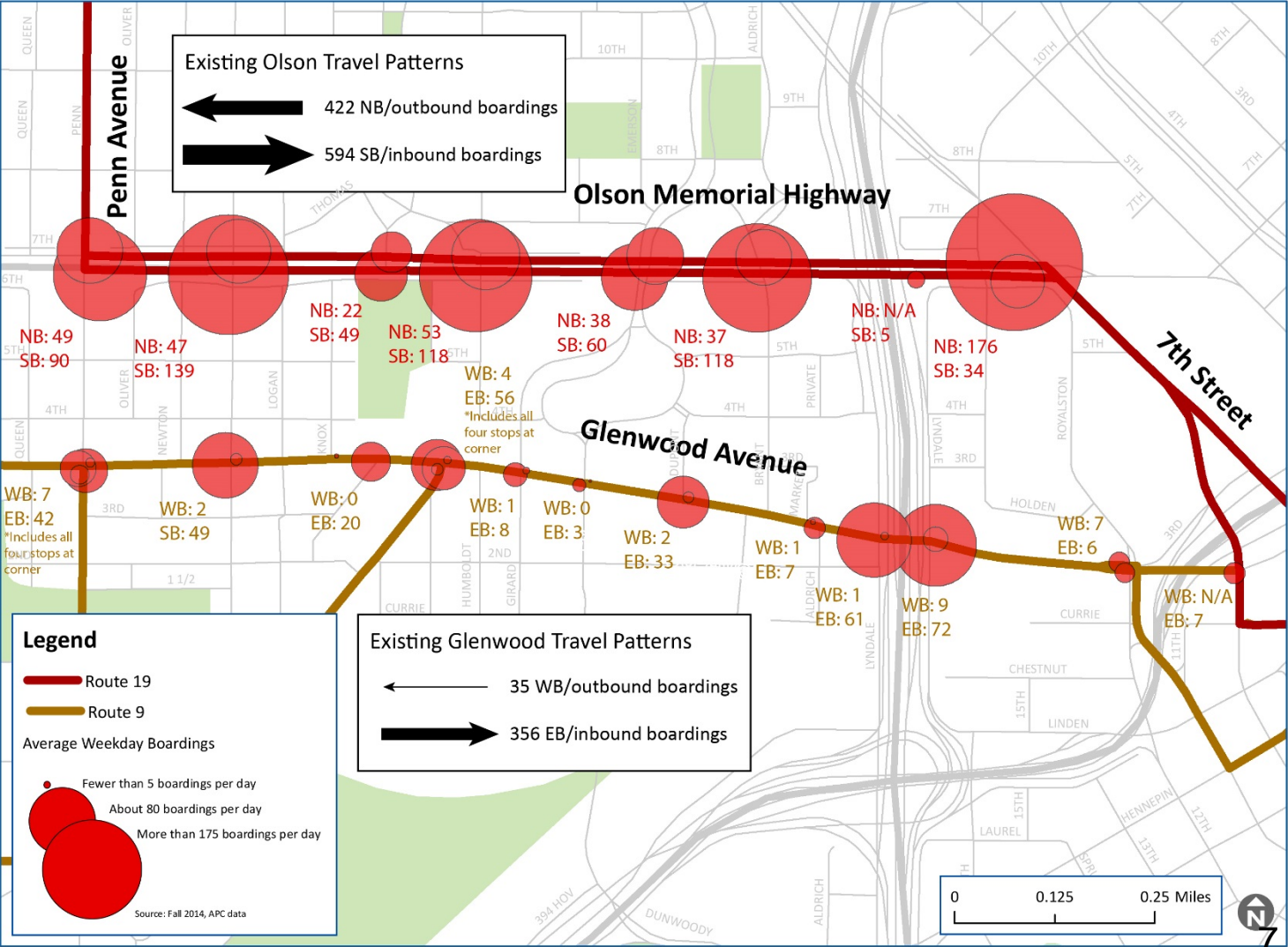


- Glenwood Station Plan process has not been initiated
- Preliminary stations based on major connections, ridership

Service & demand today

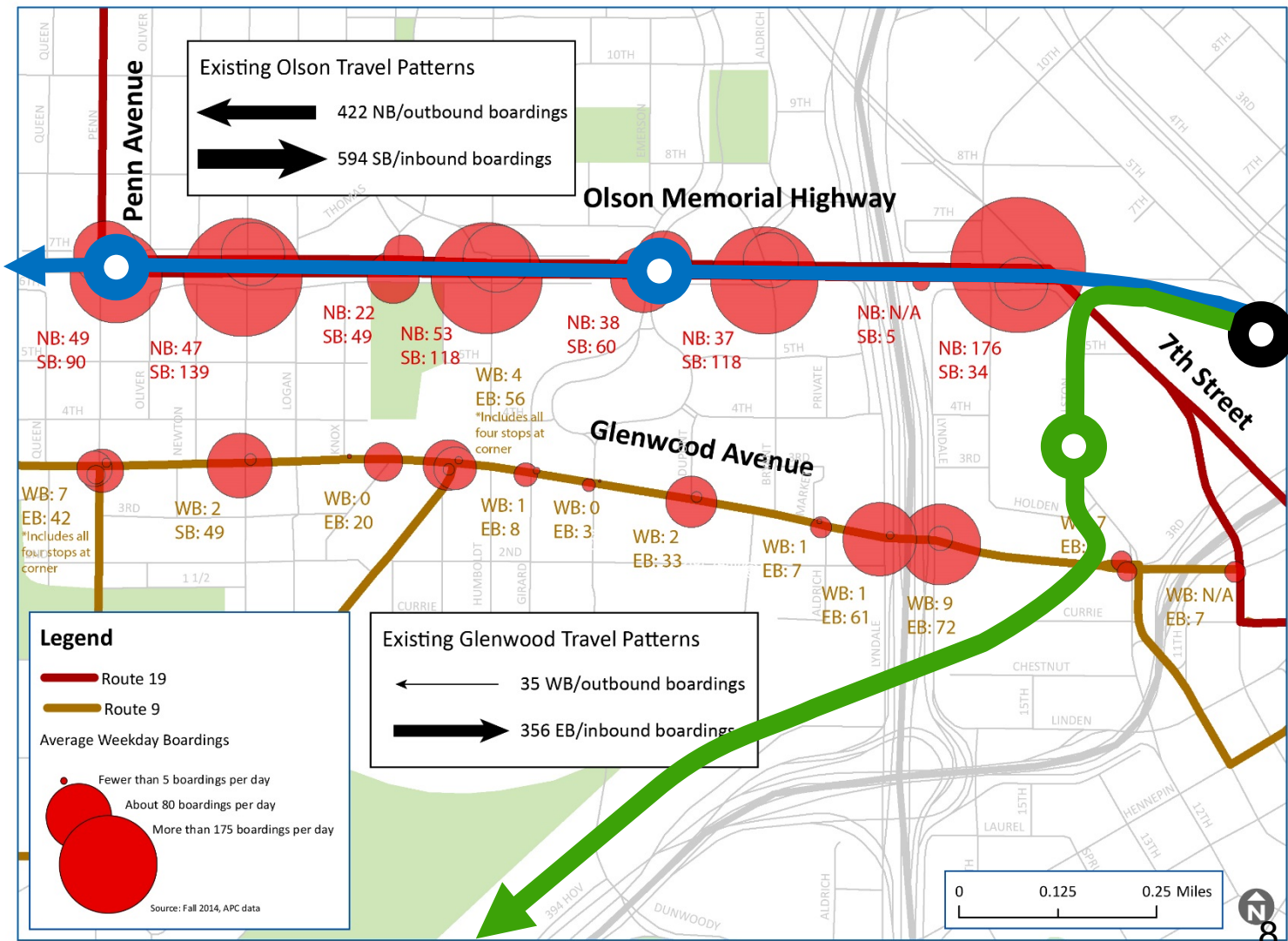
Service Frequency

| | Route 19 | Route 9 |
|------------|----------|---------|
| Rush Hours | 8-10 | 20 |
| Midday | 10 | 30 |
| Evening | 15-20 | 30 |
| Owl | 60 | -- |
| Sat/Sun | 15 | 30 |





Planning for future changes



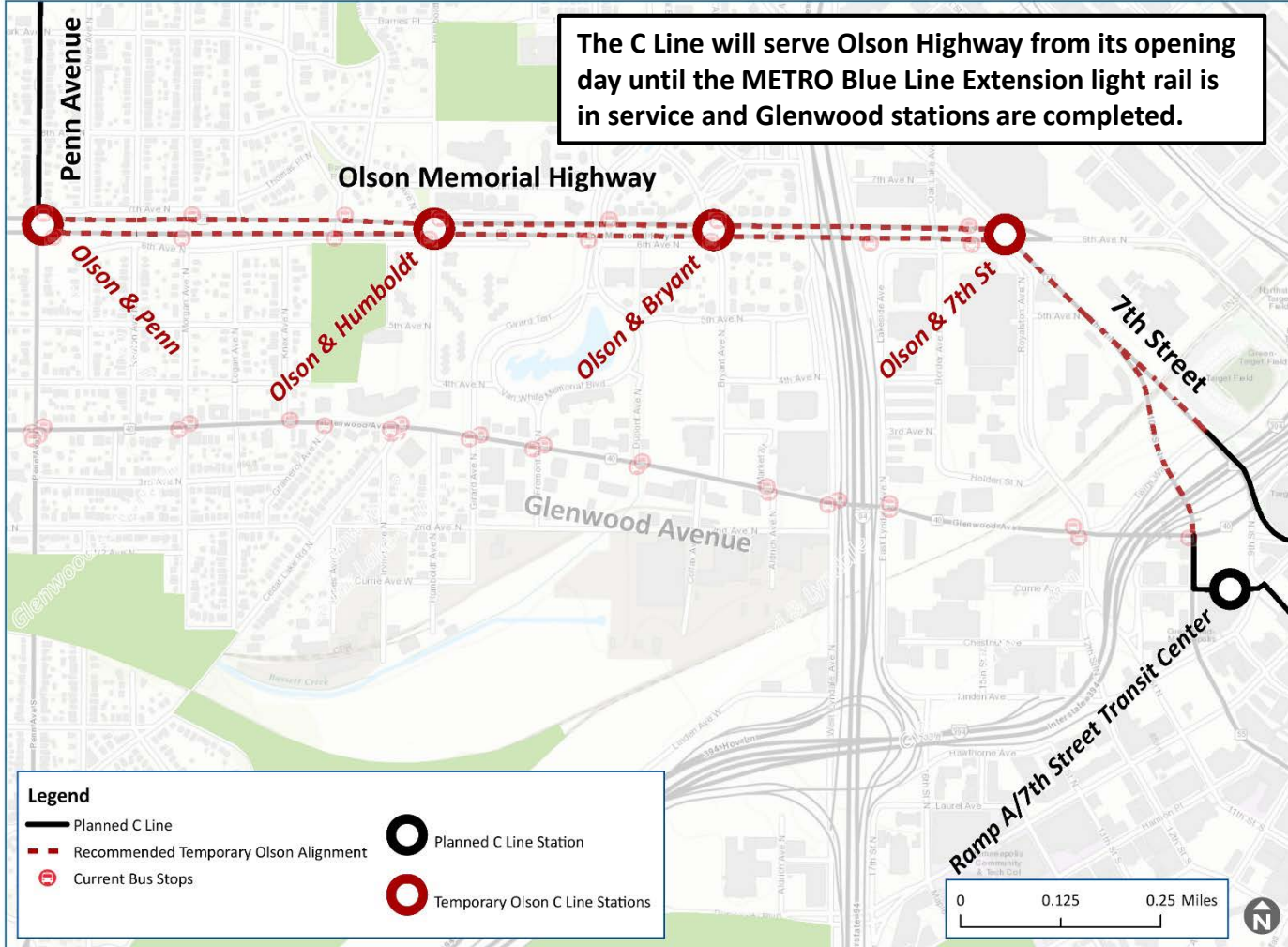
Key evaluated factors

| | Olson | Glenwood |
|------------------------------------|-------|----------|
| Population served | ☑ | ☑ |
| Travel time | ☑ | ☑ |
| Connections to LRT | ☑ | ☑ |
| Support economic development | ☑ | ☑ |
| Current ridership demand | ☑ | |
| Potential future ridership demand | | ☑ |
| Future transitway network coverage | | ☑ |
| Community support | TBD | TBD |

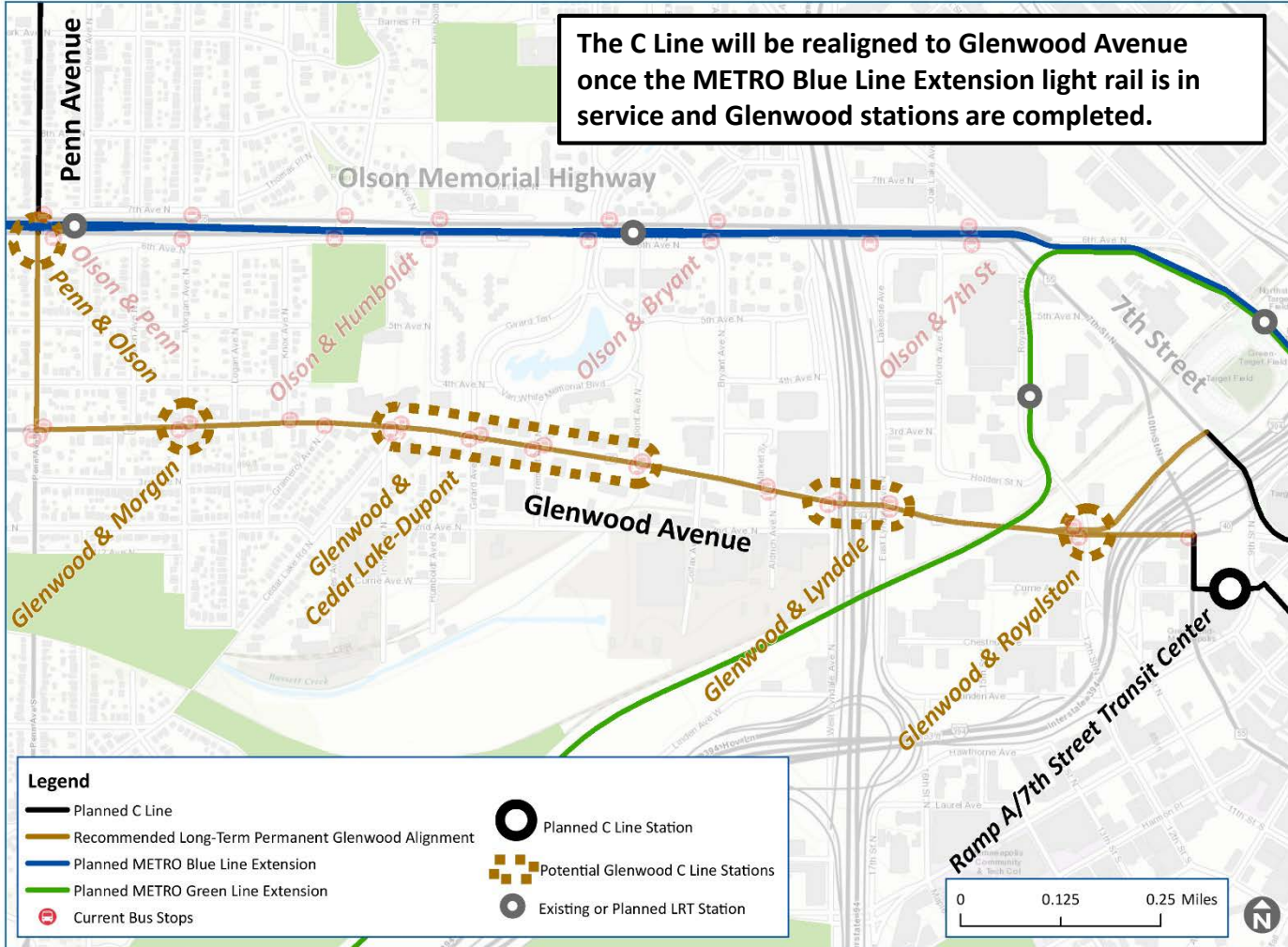
Study recommendations

- The C Line will serve Olson Memorial Highway from its opening day until the Blue Line Extension is in service and Glenwood stations are completed.
- The C Line will be realigned to Glenwood Avenue once the Blue Line Extension is in service and Glenwood stations are completed.
- Project development for the Glenwood Alignment will begin following completion of a Full Funding Grant Agreement for the Blue Line Extension.

C Line before METRO Blue Line Extension: Olson Highway



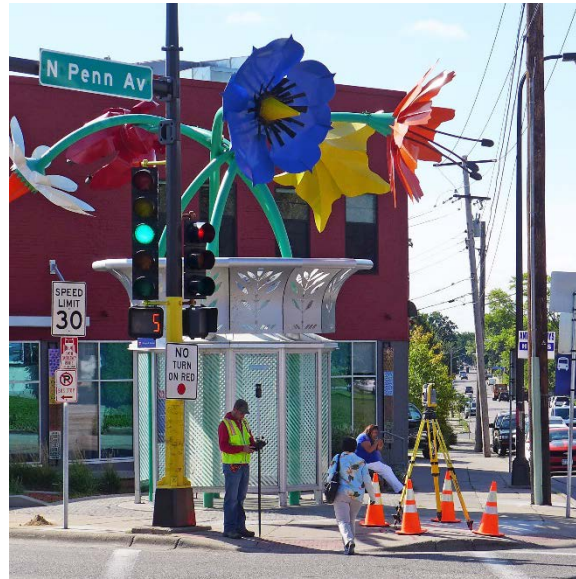
C Line after METRO Blue Line Extension: Glenwood Avenue



Upcoming engagement process

- October: Share recommendation and gather feedback
 - Open house: October 18, 6:00–7:30 p.m.
Harrison Education Center
 - Neighborhood organization discussions
 - Pop-up bus stop outreach, on-board customer outreach
 - Agency stakeholder feedback
- November: Present recommendation for Committee action to approve
- December: Present recommendation for Council action to approve

metrotransit.org/c-line-project



C Terrence Anderson, Community Outreach and Engagement Coordinator
612-719-7086 | cterrence.anderson@metrotransit.org