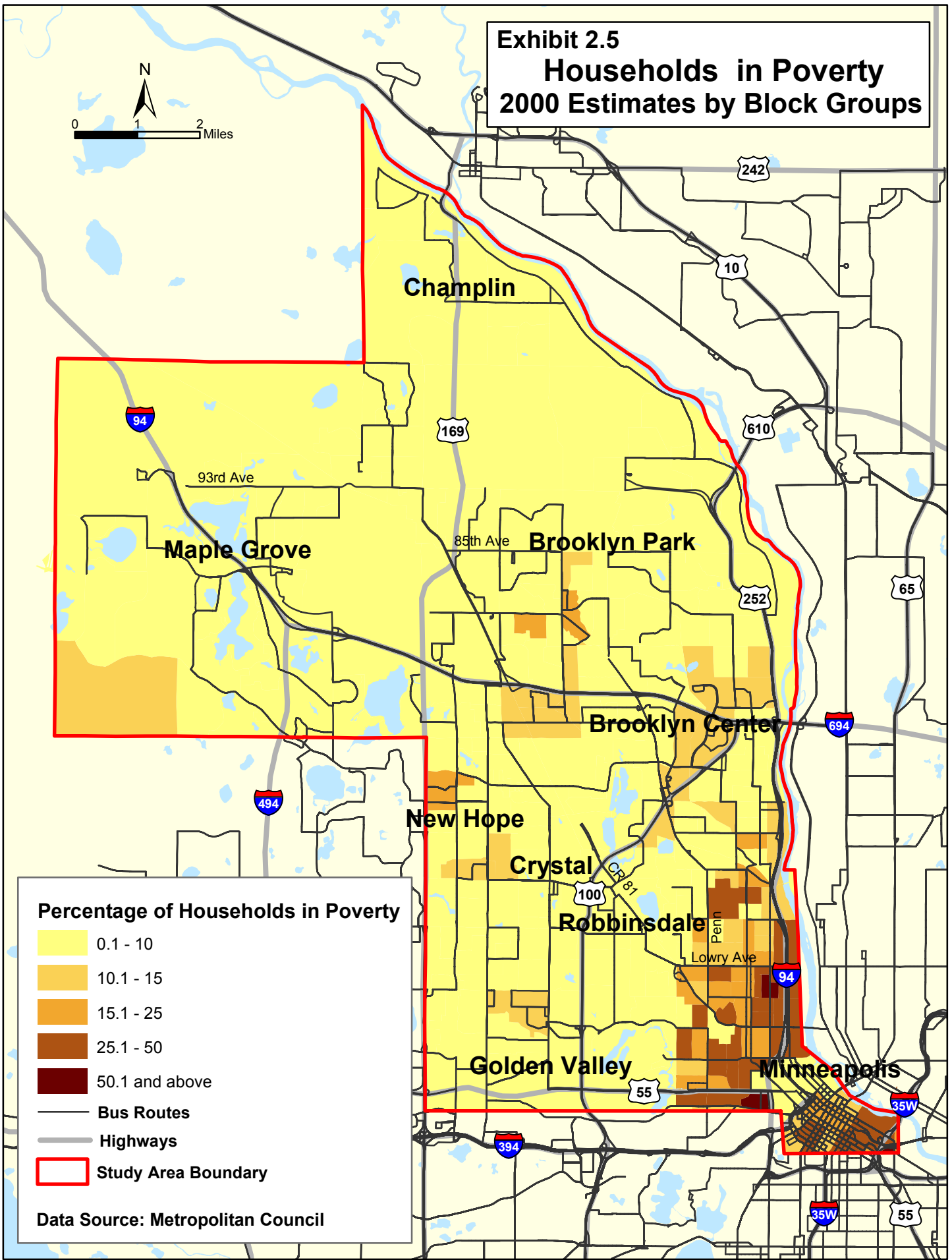
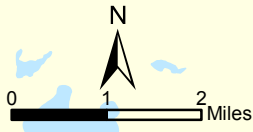


**Exhibit 2.5  
Households in Poverty  
2000 Estimates by Block Groups**



**Percentage of Households in Poverty**

- 0.1 - 10
- 10.1 - 15
- 15.1 - 25
- 25.1 - 50
- 50.1 and above

- Bus Routes
- Highways
- Study Area Boundary

Data Source: Metropolitan Council