



# 2013 Metro Transit Police Department Annual Report

20th Anniversary



## Mission Statement

Protecting our community through  
innovation and problem solving

## Core Values

### INNOVATION

We achieve a continuing standard of  
excellence through problem solving.

### PARTNERSHIPS

We work in partnerships with transit and the  
community to prevent crime and disorder.

### ETHICS

We hold ourselves to the highest ethical standards and  
treat all we encounter with courtesy, dignity, and respect.

### DIVERSITY

We embrace diversity within our community  
and promote it within our organization.

### EDUCATION

We support continuous learning and the development  
of our staff, department and the community.

## Letter from Chief

On behalf of the Metro Transit Police Department, welcome to our annual report. The men and women of the MTPD are what make this organization one of the fastest growing and most diverse police agencies in the state, and they are here to serve you. We are on the cusp of becoming the fifth largest police department in Minnesota. We are a full-service agency with a 24-hour commitment of people and resources to cover the Metropolitan Council's eight-county service area with Patrol, Investigative and Administrative Services.

This department was formed to serve and protect the more than 80 million passengers who ride the system each year. Transit Police respond to and investigate all crimes directly related to Metropolitan Council-owned transit vehicles or occurring on Metro Transit property, including buses, light rail, commuter trains, facilities and right-of-ways. Uniformed officers ride the buses and trains, patrol routes, and use police cars for quick response to emergency situations. Undercover officers ride the buses and trains; the Investigations Unit handles the follow-up investigation of serious offenses.

Metro Transit is a very low-crime environment. In a system where customers board more than a quarter-million times each weekday, crime on the system was down 21 percent in 2013.

We strive to provide excellent police service each and every day. Whether you are using transit to travel to work, school, home or simply visiting, we want your experience to be safe, fun and memorable.

Building upon past successes within community policing, the MTPD is committed to a neighborhood and problem solving policing philosophy. This philosophy addresses crime and the fear of crime through a shared relationship between citizens and beat officers in their specific neighborhoods. This approach drives us to proactively work to keep the peace using proven problem-solving methods and partnerships that will elevate the quality of life in our neighborhoods.

We invite you to become involved with our department in order to continue forging a strong cooperative partnership that is built upon mutual trust and respect. No police department can solve crime or quality of life issues alone. Effective community/police relationships, communication and engagement are critical components to our success.

**On Board, On Foot, On the Rails – We commit to work for the personal safety, quality of life, and protection of property for the stakeholders in our metropolitan community**



Chief John Harrington



## METRO TRANSIT POLICE DEPARTMENT: MORE THAN 20 YEARS OF CHANGE AND GROWTH

In the ranks of law enforcement agencies in Minnesota, the Metro Transit Police Department (MTPD) is one of the newest. However, in just over 20 years it has grown from a simple security division to one of the largest police departments in the state. In the future, the MTPD will continue to grow and improve along with the transit system in the eight-county metro area.

The department was formed in 1994 by the Metropolitan Transit Commission. The first Chief of Police was Paul Wallace, originally from the Chicago Transit Authority. He hired the first part-time police officers, acquired two used Minnesota State Patrol squads, developed the policy manual, located the current headquarters building and approved the first badge and uniform. There were just two full-time police officers: the Chief and Deputy Chief. Part-time officers were full-time officers at Minneapolis and St. Paul police departments. Officers would predominantly ride buses, in plainclothes, on routes 5, 14, 16, 18 and 21. The uniform was a simple Polo shirt and windbreaker with POLICE written across the back. Before his departure, Chief Wallace hired the first full-time police supervisors.

Chief Richard Carlquist, Chief Mancel Mitchell and Chief Dean Mooney led the MTPD from 1996 to 2001. Chief Mooney developed the first light-

rail security plan for the Hiawatha Corridor; now the METRO Blue Line. In 2001, Chief Jack Nelson joined the force and hired the first full-time police officers, oversaw the opening of the Blue Line, added police investigators and increased the fleet of squad cars. Chief Nelson left MTPD in 2006.

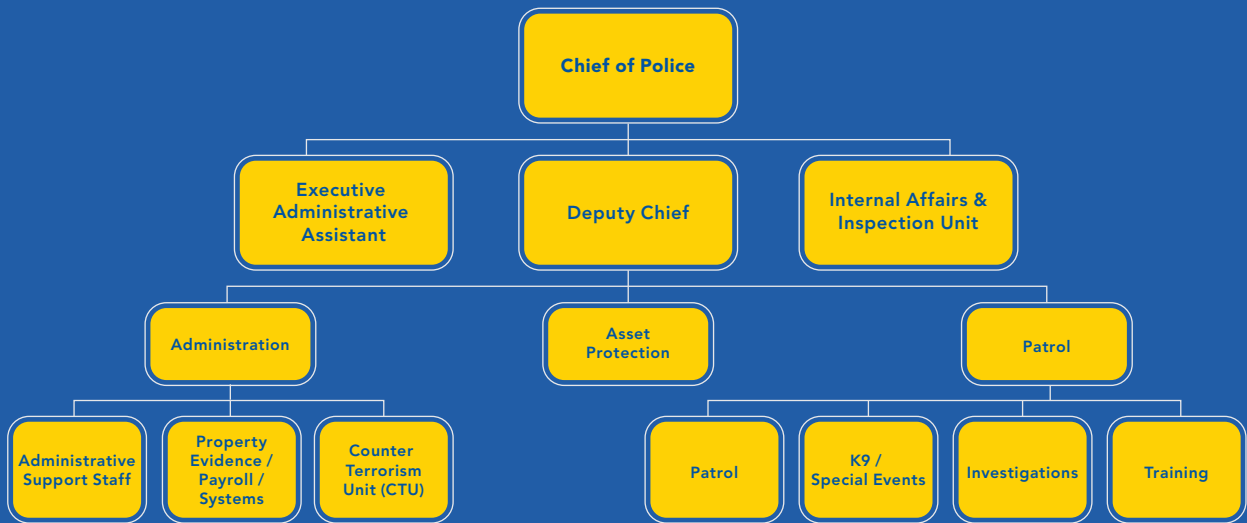
Chief Dave Indrehus became chief in 2007 and continued to oversee the MTPD as it changed to meet the increasing needs of the transit community. That included assigning officers to more permanent bus details, increasing the number of onboard hours and the addition of K9 officers. The number of full-time, dedicated officers continued to grow under Chief Indrehus.

In 2012, John Harrington became and is currently the MTPD Chief. Chief Harrington was the former Chief at St. Paul PD and a state senator. Chief Harrington continues to increase the MTPD staff and stresses a more diverse department. A strong community policing advocate, he has increased the number of officers assigned to beats and certain geographical areas to reach out to the transit community. In addition, he has opened two new MTPD substations in downtown St. Paul and Minneapolis to better serve the community. Chief Harrington continues to look for new innovative ways to move the department forward.

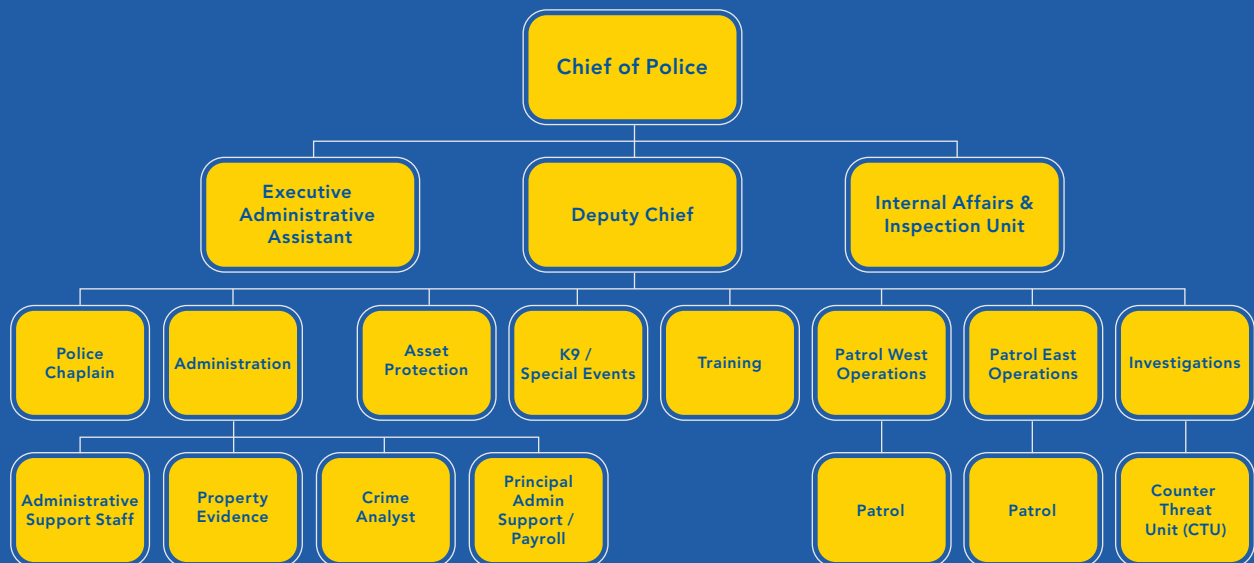
## 2000 Metro Transit Police Department



## 2012 Metro Transit Police Department



## 2014 Metro Transit Police Department





## ADMINISTRATION

Deputy Chief AJ Olson is second in command of the MTPD and oversees the day-to-day operations of the Department. He is responsible for the Patrol Division, Support Services, Asset Protection and Investigations. He provides direct supervision to two captains, three lieutenants, and one civilian supervisor. In addition to his direct supervision, DC Olson also participates on law enforcement advisory boards and committees.

---

### Budget Management and Support Services

Lt. Steve Bakeberg oversees the MTPD budget, grant funding, new employee testing, hiring and background. In addition, he supervises five support services personnel.

In 2013, MTPD hired 21 full-time officers, 45 part-time officers and three civilians. These hires directly related to the Department's mission for a diverse workforce to represents the communities it serves. The MTPD currently has 172 full-time and part-time officers; 8.7 percent female officers and 17.8 percent minority officers. It will continue to support diversity by embracing it in the community and promoting it within the organization.

### Crime Analysis Unit

Tim Lynaugh joined the Department in 2013 as a crime analyst. A retired St. Paul Police Department member, he brings a wealth of knowledge in gathering intelligence and analyzing the data patterns that emerge from it. He partners with other agencies and organizations to consolidate crime data and look for patterns affecting Metro Transit customers, facilities, or property. The information allows Metro Transit Police to properly assess emerging trends and to deploy its resources to address these issues in a timely and effective manner.

In addition to his analysis work, Lynaugh has begun to research analytical tools; developed partnerships with both the private and public sectors; and taken the lead role in developing improvements to the department's current record management system. All of these actions work toward the Department's goal of creating a safe and secure transportation system through predictive policing.

## Systems and Evidence Unit

Systems and Evidence Administrator Jerri Landis oversees the varied reporting systems and the property and evidence unit. Hired in 2012, she is a member of the International Association of Property and Evidence (IAPE) and currently pursuing her property and evidence certification. In 2013, the unit facilitated the intake of more than 9,400 items of property and/or evidence. This was a 25 percent increase over 2012. As the transit system and MTPD continue to expand, this number will continue to increase in the coming years. Landis is preparing for this expected growth.

The Unit successfully completed an audit of all property and processes in 2013. The result of this audit was development and implementation of additional improvements, including a proper packaging policy for all intake articles – items kept for safekeeping and items of evidentiary value. Training was provided to all MTPD officers during a 2013 in-service session.

Systems improvements also included an improved search function of the current records management system, which allows officers and investigators better access to information – a significant contribution towards the Department's intelligence-led policing strategy. In addition, there was significant progress made toward implementing electronic ticket-writing for officers. This improvement will lead to more time for officers to engage in community policing strategies and problem solving.

---

## Technology

Tracy French moved from the Southwest Project Office to become a dedicated Police Technology Coordinator in 2013. His experience and knowledge brings immediate Information Technology support for all of the department's technology issues. French examines areas where technology can increase the department's effectiveness and where implementing it can put more officers in the community addressing crime issues. In 2013, he deployed a smart card system for two-step authentication on computer systems. He also identified configuration and technology issues related to the Mobile Video Recorder, more commonly known as the in-squad camera system. He is currently developing changes to address these issues for all patrol cars.

Integration of our Record Management System (RMS) with both the Minneapolis and St. Paul Police departments was a major accomplishment in 2013. Officers no longer complete two reports; one for the MTPD and one for the city police department. Information is now seamlessly downloaded from the MTPD system to theirs on a daily basis. This frees up time both for support staff and officers on the street, once again putting them out in the community and interacting with citizens more frequently.

---

## Professional Development Unit

Lt. Jason Lindner, Training Unit Supervisor, facilitates the Training Academy, Field Training Officer (FTO) training, Continuing Education and In-Service Training for all MTPD officers.

Lindner and Bakeberg led the transition to a standard Department-issued handgun. This effort included research, testing, selection, approval and acquisition of the GLOCK 17. Training was completed in the first quarter of 2014.

The four-week-long Training Academy covered topics such as Property and Evidence, Fitness, Domestic Assaults/Court Testimony, Handgun and Patrol Rifle, Use-of-Force, Report Writing, Reality Based Scenarios, Rail Operations, Felony Stops, Gang Awareness, Community Relations, Diversity, Problem Solving, Homelessness, Culture of Poverty, etc. Twenty-one full-time officers attended; 45 part-time officers attended a modified academy and completed 10 training shifts.

The MTPD provided more than 4,200 hours of in-service or continuing education. This number does not include training provided by outside agencies or groups. Topics covered included: Handgun and Patrol Rifle, Reality-Based Training Scenarios, Plainclothes Considerations, Legal Updates, Use-of-Force, Report Writing and Body/Mind/Soul training by the Police Chaplain.

In addition, Active Shooter Response Training was attended by all full-time officers. This dynamic course of instruction prepared the first responding officers to isolate, distract and neutralize an active shooter. Course curriculum included weapon manipulation, threshold evaluation, team movement, entry techniques and breaching techniques.

3 Echo (Entry, Evaluate, and Evacuate) trains and prepares the first responding officers and medical first-responders for the next stage of an active shooter incident. Officers, coupled with first-responders, enter, triage and evacuate victims from the scene. Training includes moving formations, incident response, and control and completion techniques.

---

## Asset Protection

Asset Protection is responsible for the physical security of all Metropolitan Council property and facilities. These responsibilities include all security card readers, security badges, key locks, mobile cameras and fixed cameras. It was also responsible for more than 4,500 requests for video downloads in 2013. The amount of video data collected by the transit system increases 20-30 percent every year; a fact that increases the amount of time it takes to download.

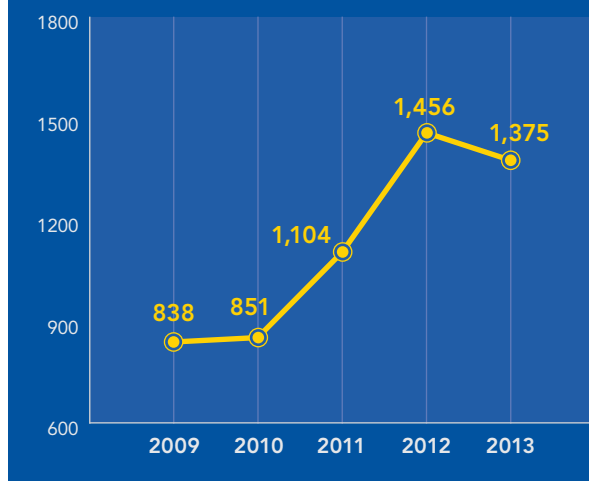
There was a significant amount of staff turnover in Asset Protection in 2013. Asset Protection Supervisor Fritz Coulter retired after 12 years of overseeing a large amount of growth and advancement in technology. He was replaced by Dan Carlson, who spent 33 years as Physical Security Manager at Lockheed Martin. Tim Ballman was promoted to Senior Asset Protection Technician.

2013 continued to show growth and improvements to security systems across Metro Transit. There was an upgrade to the camera system software; conversion to a digital system; the addition of the MTPD East Command; and the preparation for the new METRO Green Line, which will open in mid-2014.

## Investigations Unit

Lt. Charles Donaldson, Investigations Unit Supervisor, supervised two sergeant investigators and two officers on one-year career enrichment assignments. In late 2013, he also took over the supervision of the Counter Threat Unit (CTU).

The Investigations Unit closed 1,375 cases in 2013; an increase of more than 64 percent from 2009.



Investigating crimes against Metro Transit operators is perhaps the most important investigation conducted. Assaults on operators can range from a physical assault, spitting or disruption of the safe operation of a bus and/or train. In 2013, MTPD cleared more than 73 percent of these felony-level cases with an arrest. That number far exceeds the rates of other departments and the national average.

---

## Counter Threat Unit (CTU)

Sgt. Joanne Sellner supervises the four officers assigned to CTU. Originally called the Counter Terrorism Unit, the unit was established through federal grant funding to address threats to the metropolitan transit system. The team is trained in plainclothes surveillance, behavior detection and threat assessment. While the federal funding has ended, the need for such a team continues. The current unit continues to focus its efforts on threats on a national and also a local level.





## PATROL

The patrol division is the heart and soul of the MTPD. They provide police service 24-hours-a-day, every day of the year. Without these officers dedication, the MTPD could not achieve our mission of Protecting Our Community Through Innovation and Problem Solving. They are the fundamental part of community policing by bringing law enforcement and community together to address issues related to our transit system.

A significant event for the patrol division in 2013 was the establishment of a East and West Command structure. The division allows us to continue to expand our operations while increasing our commitment to the communities we serve.

| PART I CRIME                 | 2012       | 2013       |
|------------------------------|------------|------------|
| Homicide                     | 0          | 0          |
| Rape                         | 0          | 0          |
| Robbery                      | 88         | 110        |
| Aggravated Assault           | 21         | 32         |
| <b>Total Violent Crimes</b>  | <b>109</b> | <b>142</b> |
| Arson                        | 1          | 0          |
| Burglary                     | 0          | 0          |
| Larceny Theft                | 393        | 501        |
| Motor Vehicle Theft          | 2          | 4          |
| <b>Total Property Crimes</b> | <b>396</b> | <b>505</b> |
| <b>TOTAL PART I CRIMES</b>   | <b>505</b> | <b>647</b> |

## East Command

The East Command, located on Transfer Road in St. Paul, is overseen by Captain Jim Franklin. He is responsible for supervising Metro Transit police services throughout the East Metro. This group works closely with law enforcement in St. Paul and the eastern suburbs to address issues on or near the transit system. Part of these services include foot patrol beats in downtown St. Paul, which work out of the MTPD substation located near 5th and Minnesota. The opening of the METRO Green Line in June 2014 will bring an additional need for police services in St. Paul and the East Metro. Like the Blue Line, the Green Line will have a dedicated group of officers responsible for ensuring the safety of customers on the trains and platforms.

---

## West Command

The West Command, located on Minnehaha Avenue in Minneapolis, is the "original" MTPD headquarters. Captain Michael Lavine oversees patrol operations in Minneapolis and the western metropolitan suburbs. Police services are provided for the METRO Blue Line, Northstar Commuter Rail, and the buses that travel hundreds of miles through many communities. Part of these services include a foot patrol beat in downtown Minneapolis. A new MTPD substation is soon to open at 7th and Nicollet Mall, which will be the home base for foot patrol officers and several Community Service Officers. It is another example of MTPD commitment to expand its services into the community. Another substation is located in the Mall of America Transit Center in Bloomington. These officers ensure the safety of the thousands of transit customers that pass through the center on a daily basis on their way to and from MOA or transferring between transit routes.

---

## K9

The K9 Unit consists of four MTPD Police Officers and their four bomb detection K9 partners; Cooper, Izzy, Merle and Rusty. Besides responding to regular calls for service, these officers respond to suspicious packages, attend special events and conduct community outreach. In 2013 the K9 Unit conducted more than 2,000 proactive security sweeps at transit facilities and public events.

## CSO

MTPD has 12 Community Service Officers (CSOs)—individuals who are pursuing law enforcement degrees but have not yet been licensed as police officers. They assist officers and staff on a variety of duties, and are an invaluable resource. Once they become licensed police officers, the CSOs may be hired as full-time MTPD officers.

---

## Crash Reconstruction

Officers specially equipped and trained to reconstruct any crash involving a Metro Transit vehicle; including buses, LRT, and Northstar. They are able to tell the story about what may have contributed to a crash from examining evidence left at the scene and through mathematical calculations.

---

## Rifle Team

Officers specially equipped and trained to respond during elevated threats to the transit system.

---

## Special Events

Special events, such as Twins and Vikings games, require extra officers at many Metro Transit light-rail stations. These officers ensure trains can safely transport fans to and from the event. Besides these sporting events, MTPD also assists with events such as Race for the Cure, Fort Snelling Memorial Day events, Cinco De Mayo, dignitary visits to the area and many parades and events throughout the year. In 2013, MTPD officers logged more than 7,800 hours on 110 different special-event details. Lt. Gordon Greenwaldt led planning for these details, in addition to supervising K9 and fleet management.

# HONORS AND COMMENDATIONS

## Awards Committee

The MTPD Awards Committee is comprised of members of the MTPD and representing a cross-section of the Department. It meets and reviews all award recommendations for officers and civilians. The 2013 Awards Committee consisted of Lt. Donaldson (Chairperson), Sgt. Sellner, Sgt. Schmitz, Officer Wyatt, Officer Schroeder and Officer Lund.

Approved recommendations are forwarded to Chief Harrington. Chief Harrington was proud to present the following awards in 2013 for outstanding service.



### 2013 Officer of the Year

*Awarded to a full-time officer for outstanding individual performance and dedicated commitment to professional law enforcement*

Officer Andrew Schroeder



### 2013 Corporal Timothy Bowe Award

*Awarded to a part-time officer for outstanding individual performance and dedicated commitment to professional law enforcement*

Officer Sithyvon Chau

## Medal of Commendation

*An outstanding act that brings credit to the department and is highly recognized by other employees or citizens. The act is characterized by obvious self-sacrifice while facing personal danger.*

Officer Adam Spear

Officer Noah Landers

Officer Andrew Schroeder

## Merit Commendation

*An outstanding act or achievement that brings credit to the department and involves performance above and beyond what is required.*

Sergeant Richard Raymond  
Sergeant Waheid Siraach  
Officer Timothy Asp  
Officer Brandon Crosbie  
Officer Grant Jacobs  
Officer Michael Kaczmarek  
Officer Ryan Knoll

Officer David Lund  
Officer Jason Malland  
Officer Jewel Morrison  
Officer Daniel Sachi  
Officer Andrew Schroeder  
Officer Marvin Turner  
Officer Marty Williams

---

## Chief's Award of Merit

*Awarded by the Chief of Police for performance resulting in improving operations, outstanding community service or substantial savings in organizational costs.*

Sergeant Troy Schmitz

Sergeant Joanne Sellner

---

## Life Saving Award

*Act that contributes to the saving of a person's life.*

Officer Sithyvon Chau  
Officer Chad DeGree (2)

Officer Geoffrey Wyatt

---

## Certificate of Appreciation

*Recognition of outstanding service to the Department or for assistance in law enforcement efforts.*

Sergeant Waheid Siraach  
Officer Brandon Crosbie  
Officer Steven Lacey

Officer Thomas Ryan  
Officer Andrew Schroeder  
Officer Marvin Turner

---

## Citizens Award of Commendation

*Act of obvious self-sacrifice while facing personal danger.*

Tim Ballman, Asset Protection  
Kevin Busch  
Antonio Cooper, Metro Transit

Kiara Flowers  
Joshua Moberg  
Akosia Wuhib

---

## 2013 Promotions

James Franklin – Lieutenant Administration to Captain East Command

Jason Lindner – Sergeant Investigations to Lieutenant Training Unit

Leo Castro – Officer to Sergeant East Command

Waheid Siraach – Officer to Sergeant Investigations

