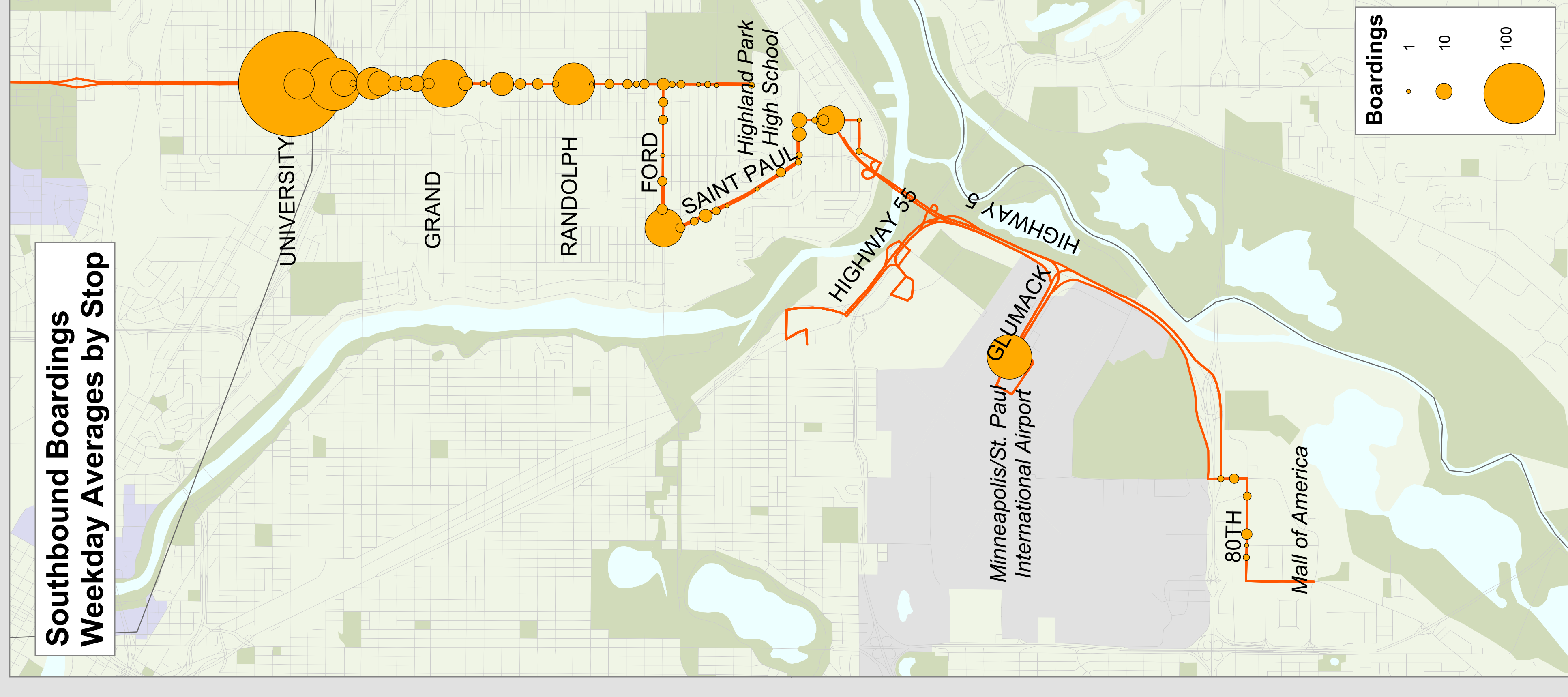
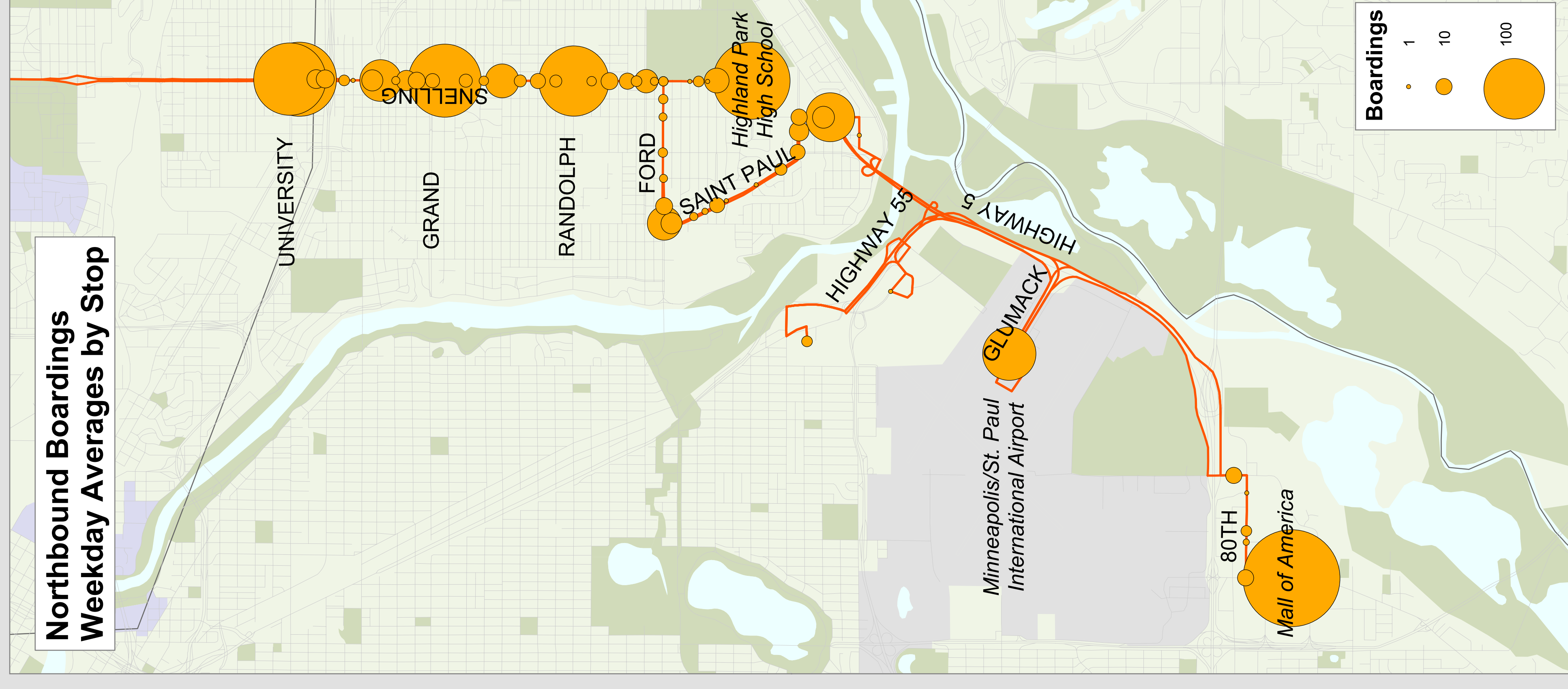
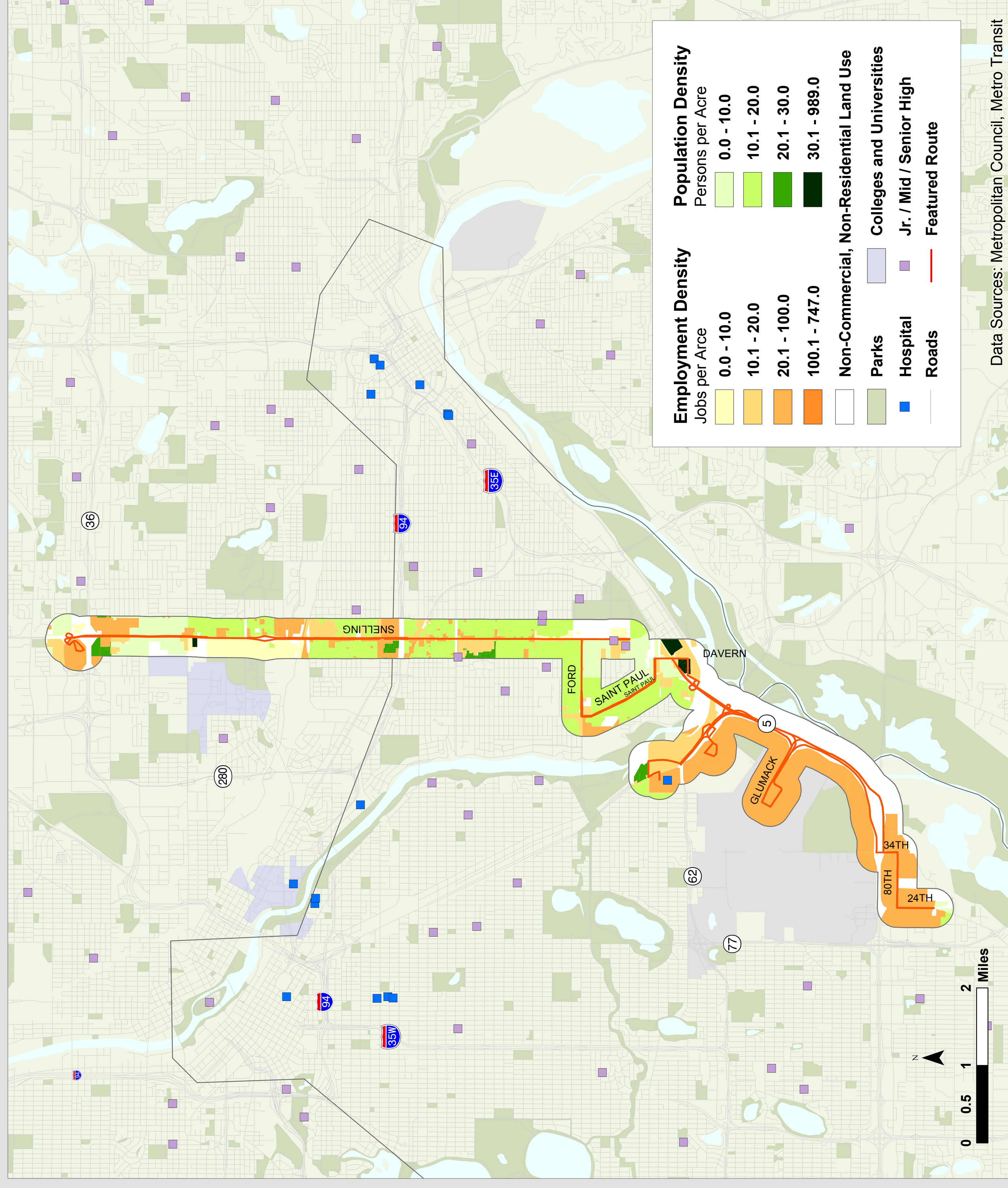


# Route 84

# Metro Transit



## Route Description

Serves Snelling Ave, Ford Parkway, and St.Paul Ave.

## Destinations Served

Rosedale Shopping Center, Har Har Mall, Midway Shopping Center, Highland Park, Mpls/St. Paul International Airport, and Mall of America.

## Route Area Demographic Statistics

|                                    |        |
|------------------------------------|--------|
| Population (persons)               | 28,908 |
| Residential Density (persons/acre) | 14     |
| Employment (# of jobs)             | 84,401 |
| Employment Density (jobs/acre)     | 31     |

## Prevailing Service Frequencies

|    | Weekday |     |    |     |     | Sat   | Sun   |
|----|---------|-----|----|-----|-----|-------|-------|
|    | AM      | MID | PM | EVE | OWL |       |       |
| NB | 15      | 15  | 15 | 30  | -   | 15-30 | 30-60 |
| SB | 15      | 15  | 15 | 30  | -   | 15-30 | 30-60 |

v: variable

## Span of Service

|         | Weekday         | Saturday         | Sunday          |
|---------|-----------------|------------------|-----------------|
| Current | 5:09am - 1:36am | 5:04am - 12:56am | 5:05am - 1:10am |

## Service Performance

|          | Unlinked Boardings | Passengers per Hour | Revenue per Passenger | Subsidy per Passenger |
|----------|--------------------|---------------------|-----------------------|-----------------------|
| Weekday  | 2,424              | 40                  | (\$2.49)              |                       |
| Saturday | 1,029              | 35                  | (\$2.23)              |                       |
| Sunday   | 1,234              | 35                  | (\$2.03)              |                       |

M-84