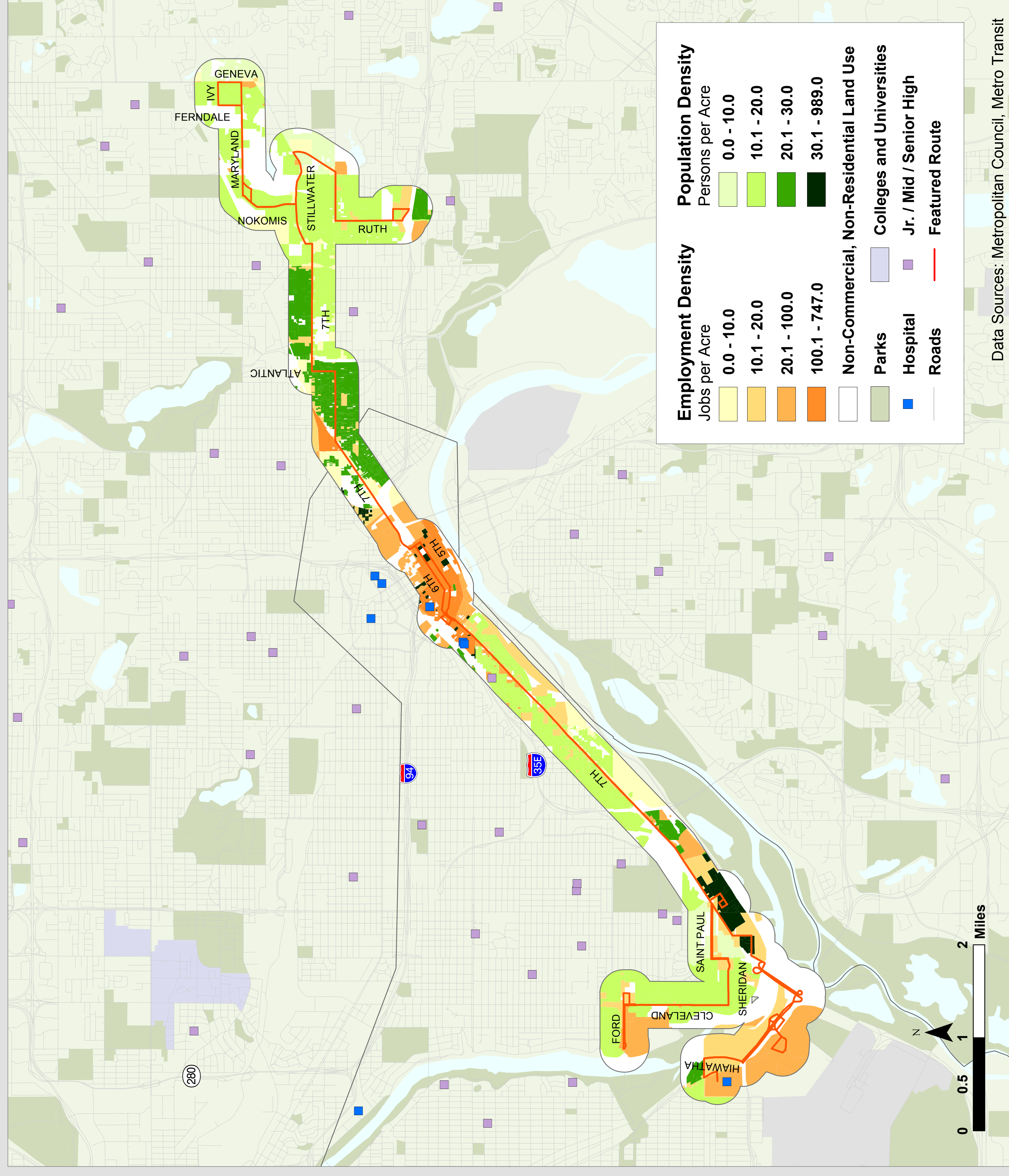
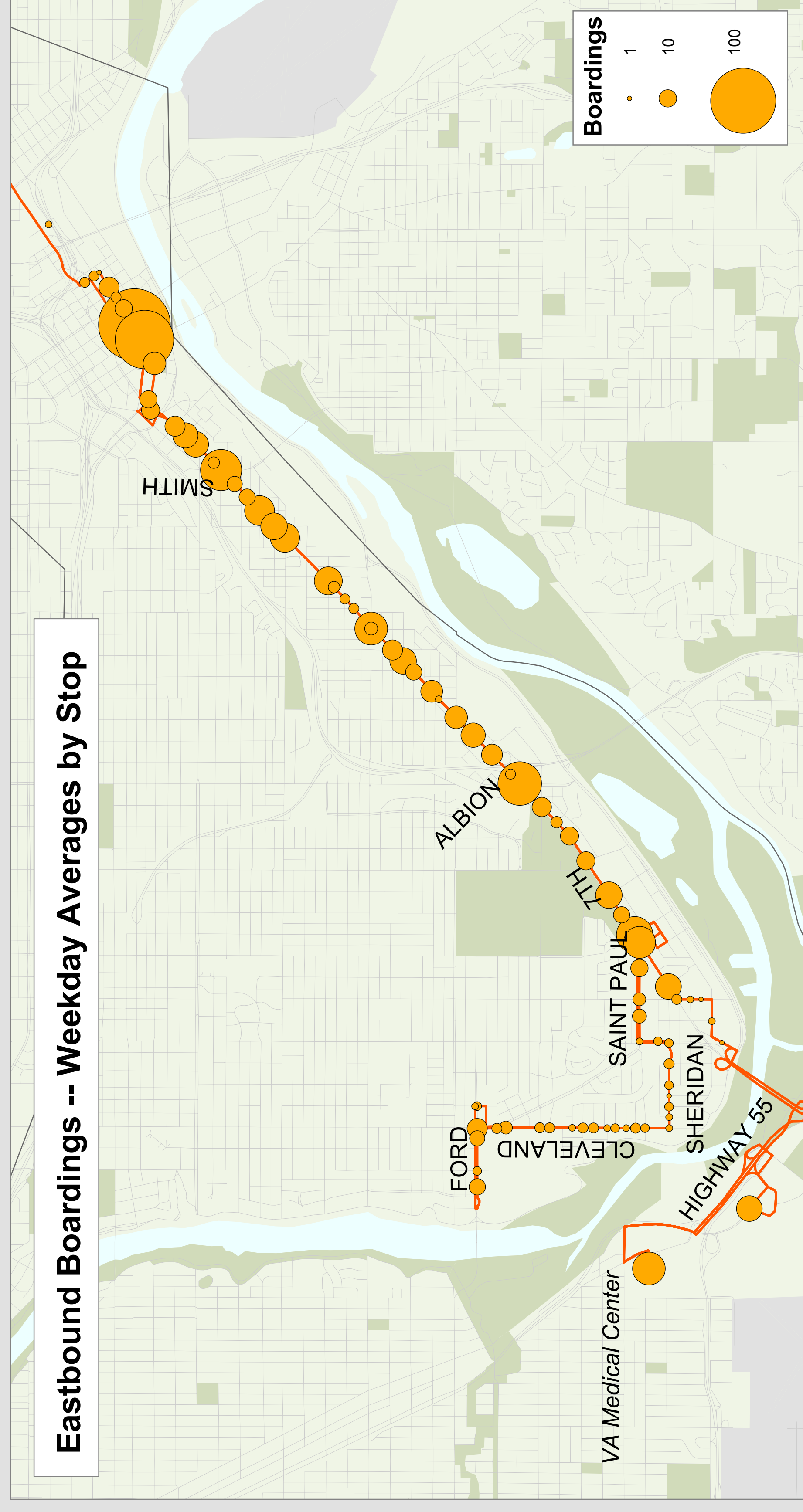


# Route 69

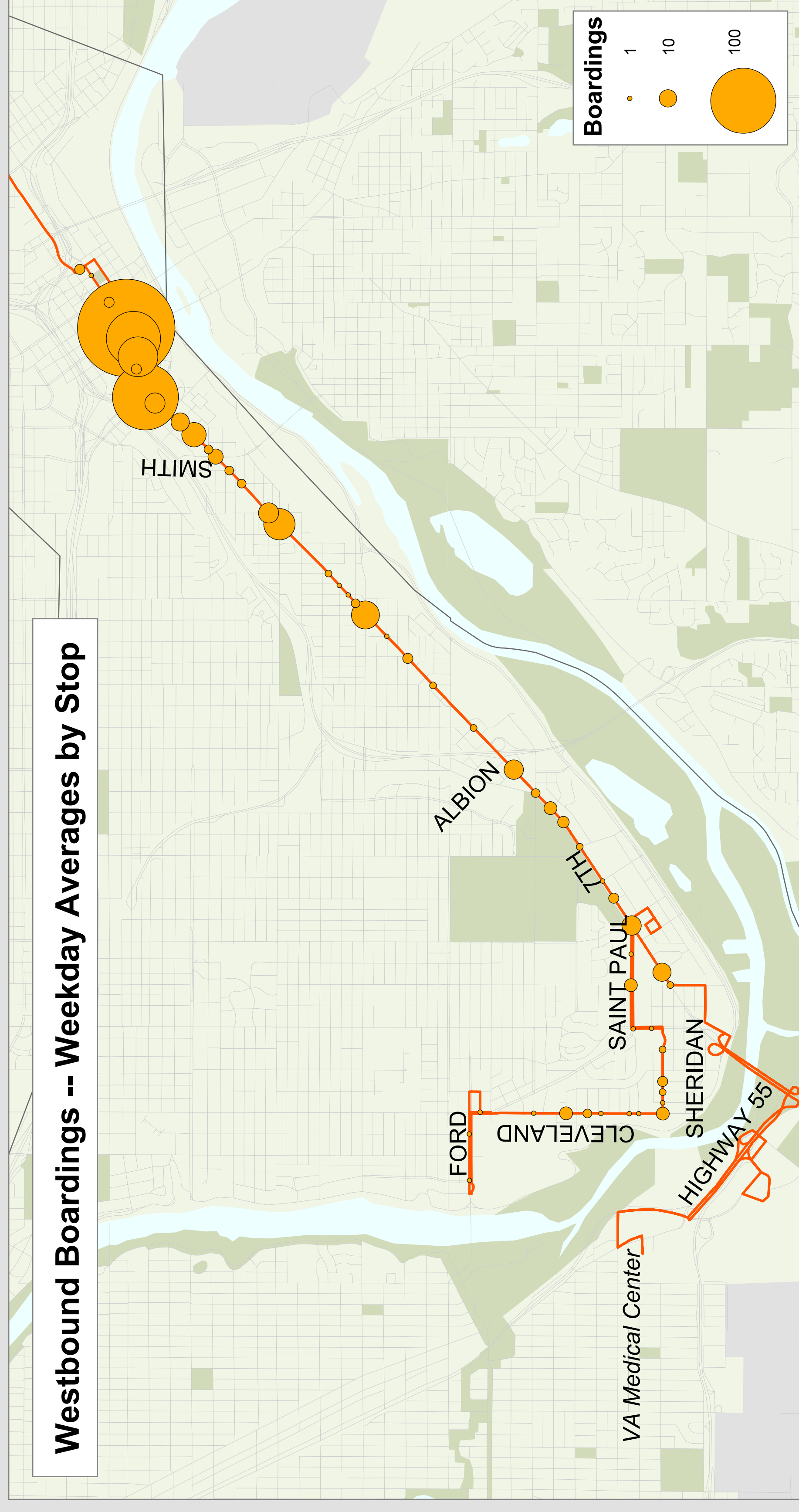
# Metro Transit



Eastbound Boardings -- Weekday Averages by Stop



Westbound Boardings -- Weekday Averages by Stop



## Route Description

Serves 7th St, Cleveland Ave, and Stillwater Ave.

## Destinations Served

Veterans Hospital, Fort Snelling, Highland Park, Downtown St. Paul, Sun Ray Shopping Center.

## Route Area Demographic Statistics

Population (persons)	52,535
Residential Density (persons/acre)	17
Employment (# of jobs)	93,693
Employment Density (jobs/acre)	47

## Prevailing Service Frequencies

	Weekday				Sat	Sun
	AM	MID	PM	EVE	OWL	
EB	10-15	15	10-15	30	-	60
WB	10-15	15	10-15	30	-	60

## Span of Service

	Weekday	Saturday	Sunday
Current	4:30am - 1:47am	5:28am - 12:42am	5:32am - 1:25am

## Service Performance

Unlinked Boardings	Passengers per Hour	Revenue per Passenger	Subsidy per Passenger
Weekday	2,051	37	(\$2.23)
Saturday	1,195	29	(\$2.05)
Sunday	701	42	(\$1.75)

M-69