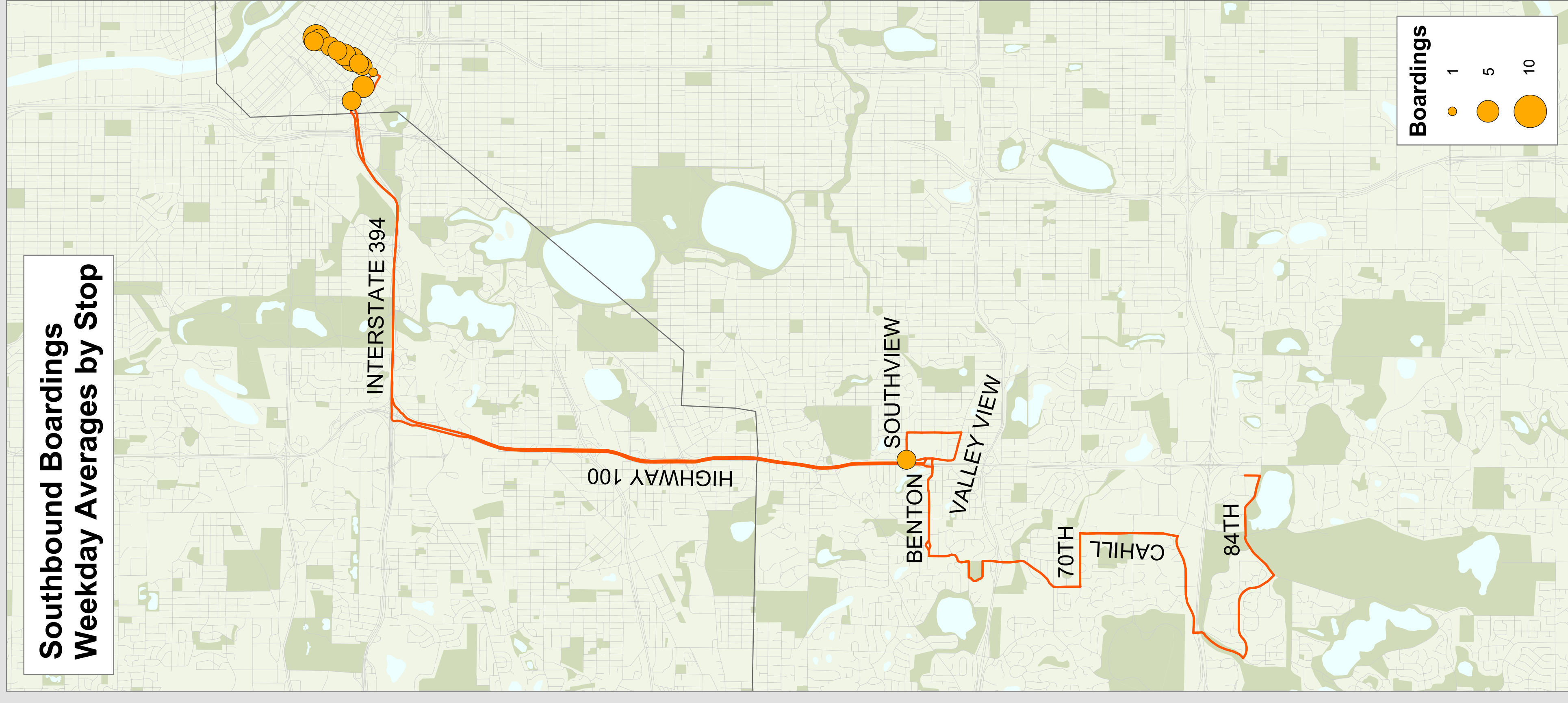
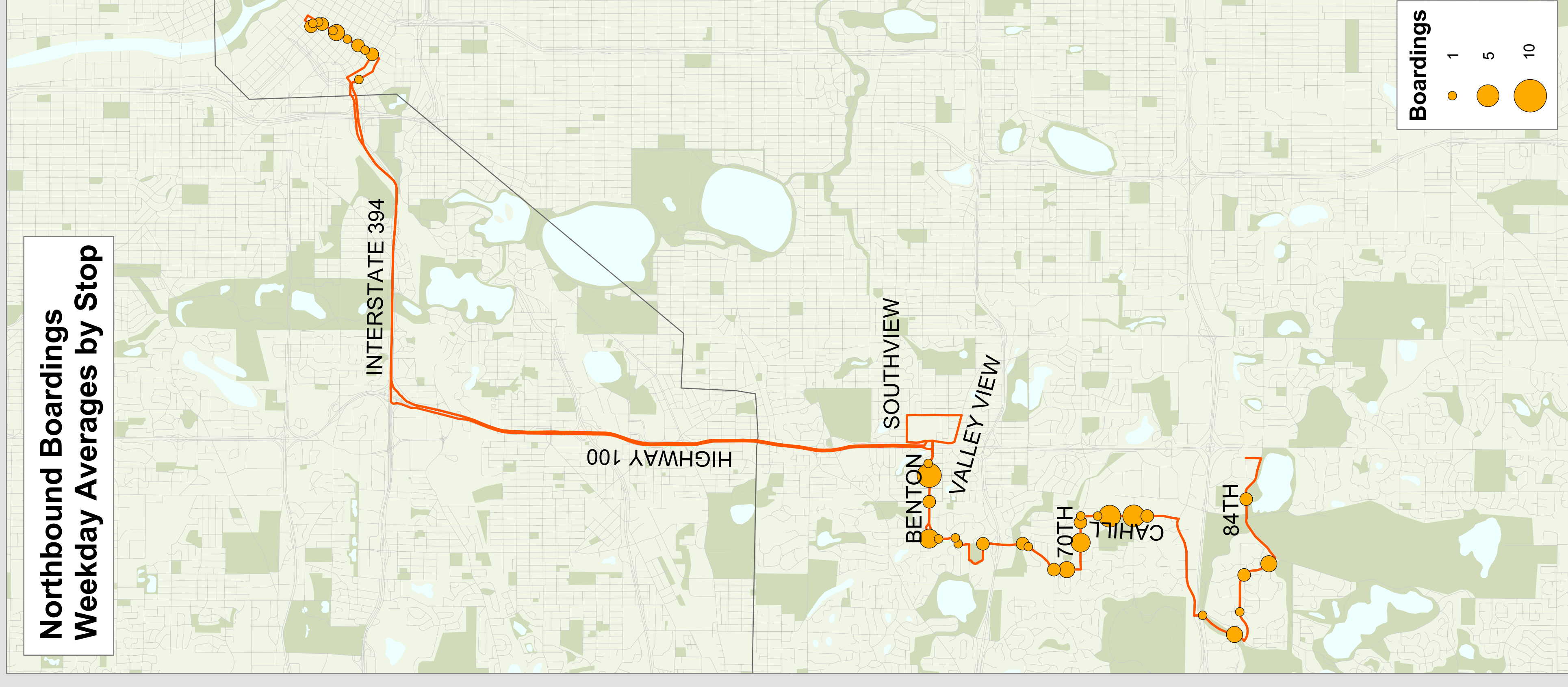
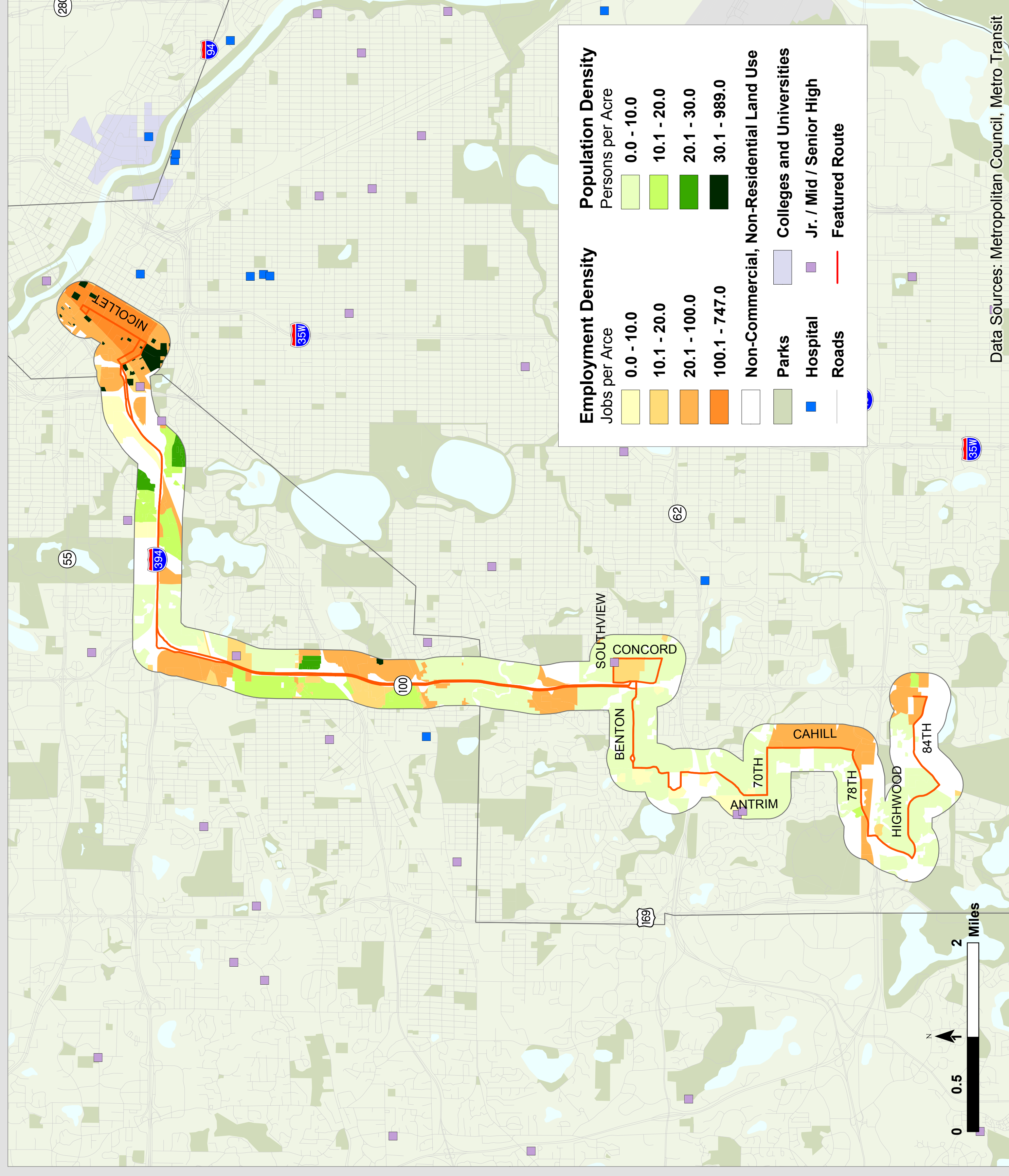


Route 588

Metro Transit



Route Description

Rush-hour service between Downtown Minneapolis, Edina, and Bloomington. Express via I-394 and Hwy 100. Local via Benton Ave, Tracy Ave, Cahill Rd and Highhill..

Destinations Served

Downtown Minneapolis, Edina, and Bloomington.

Prevailing Service Frequencies

	Weekday					Sat	Sun
	AM	MID	PM	EVE	OWL		
NB	4 trips	-	-	-	-	-	-
SB	-	-	3 trips	-	-	-	-

v: variable

Span of Service

	Weekday AM	Weekday PM
Current	5:54am - 8:50am	4:33pm - 6:41pm

Service Performance

	Unlinked Boardings	Passengers per Hour	Subsidy per Passenger (\$4.86)
Weekday	153	29	-
Saturday	-	-	-
Sunday	-	-	-

Route Area Demographic Statistics

Population (persons)	28,908
Residential Density (persons/acre)	11
Employment (# of jobs)	125,327
Employment Density (jobs/acre)	77