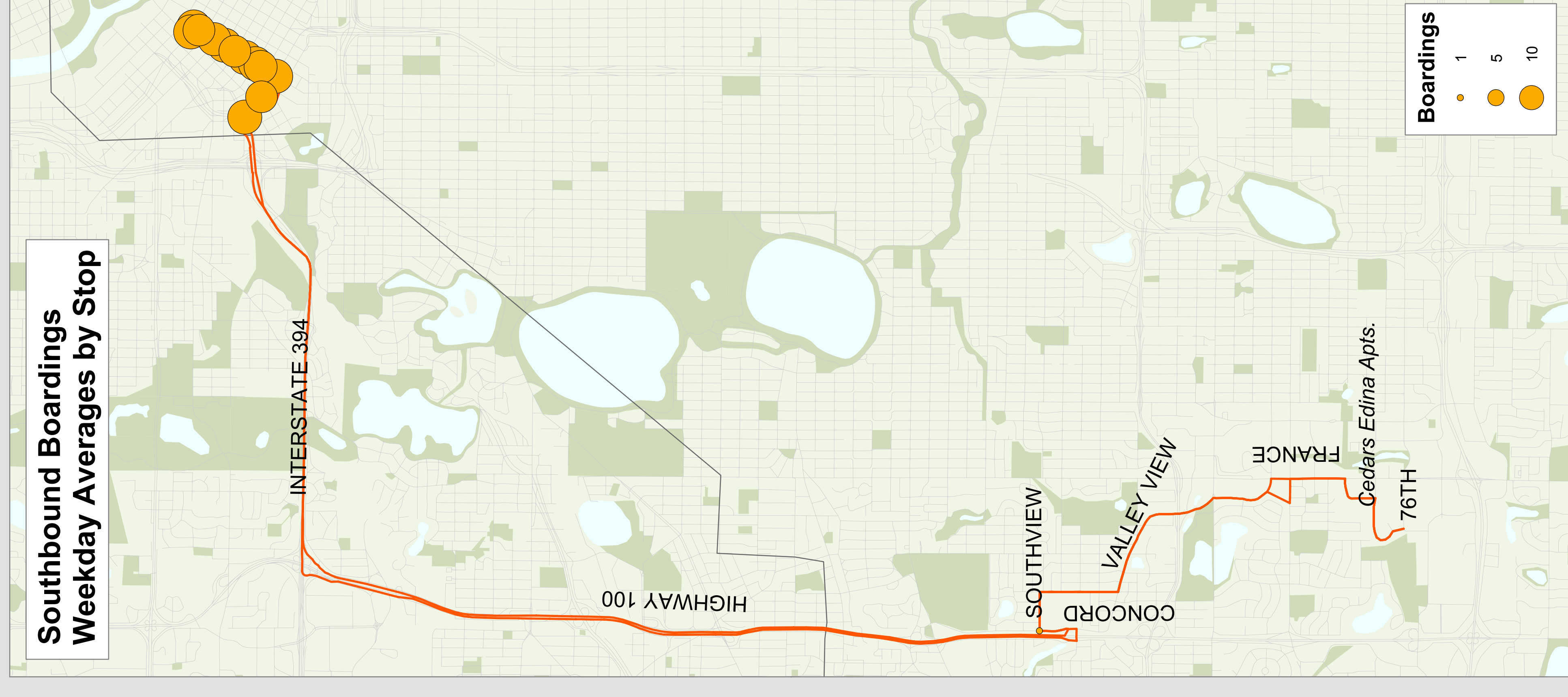
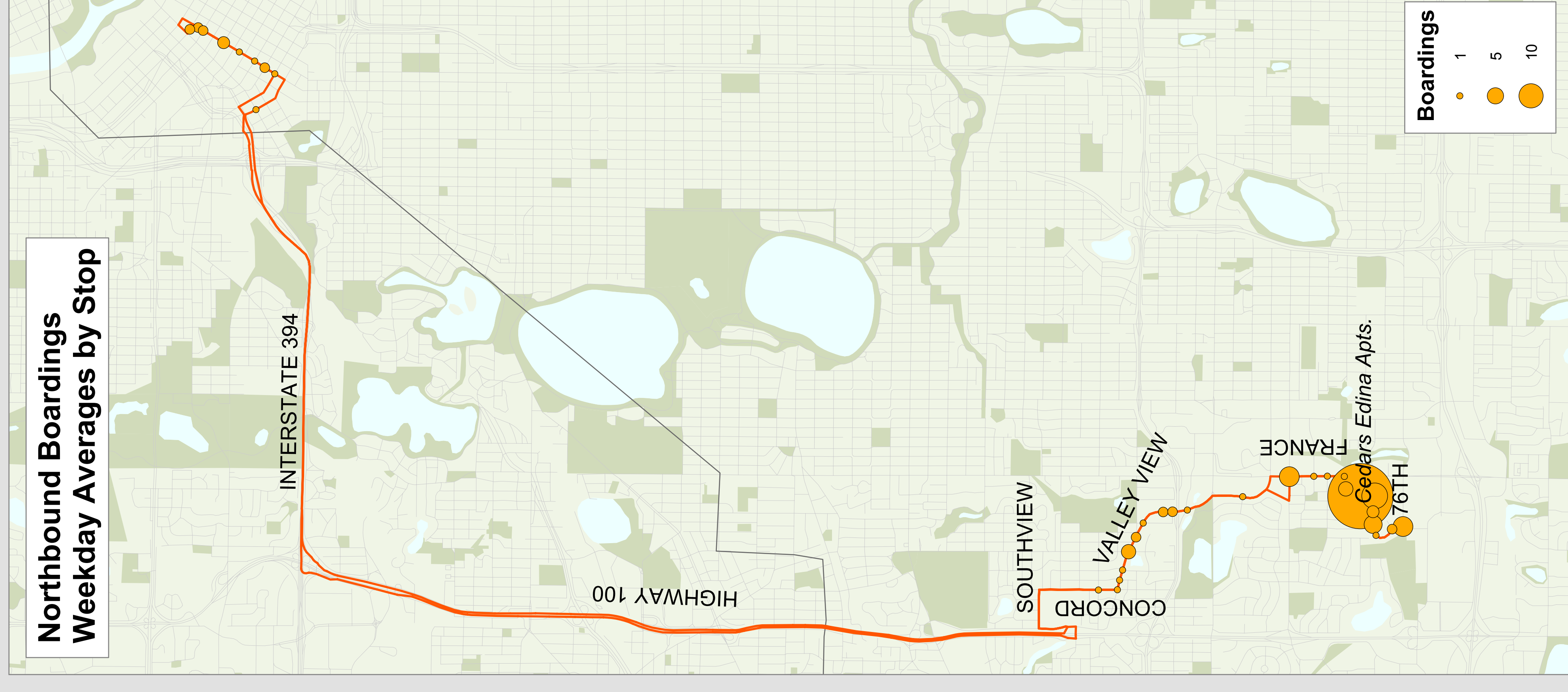
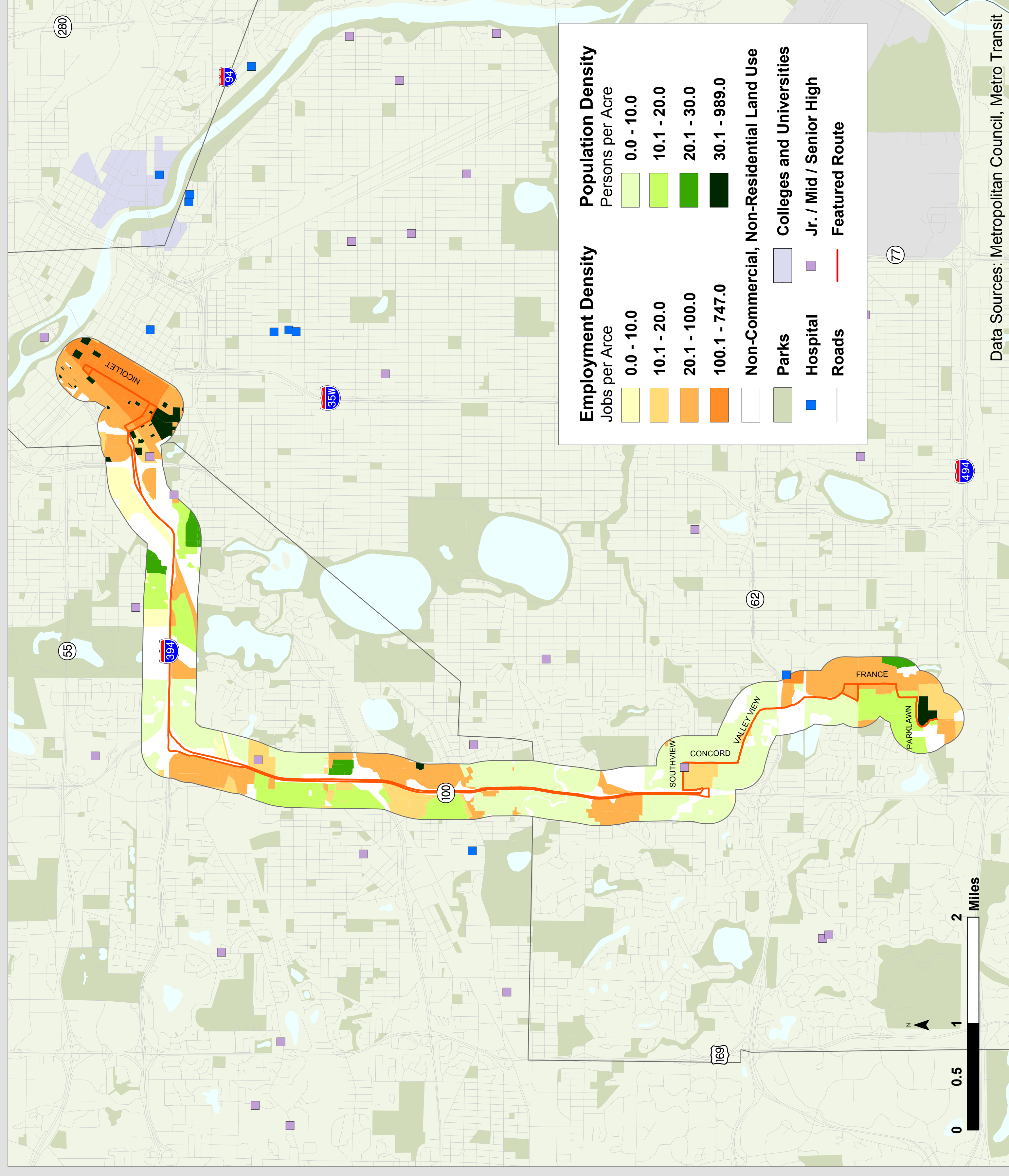


Route 587

Metro Transit



Route Description

Rush-hour service between Downtown Minneapolis and Edina. Express via I-394 and Hwy 100. Local via Valley View Rd and France Ave.

Destinations Served

Downtown Minneapolis and Edina.

Prevailing Service Frequencies

	Weekday					Sat	Sun
	AM	MID	PM	EVE	OWL		
NB	4 trips	-	1 trip	-	-	-	-
SB	1 trip	-	5 trips	-	-	-	-

Span of Service

	Weekday AM	Weekday PM
Current	6:05am - 8:22pm	3:37pm - 6:29pm

Service Performance

	Unlinked Boardings	Passengers per Hour	Subsidy per Passenger (\$2.84)
Weekday	245	38	-
Saturday	-	-	-
Sunday	-	-	-

Route Area Demographic Statistics

Population (persons)	24,912
Residential Density (persons/acre)	14
Employment (# of jobs)	121,890
Employment Density (jobs/acre)	80

M-587