



**DRAFT**

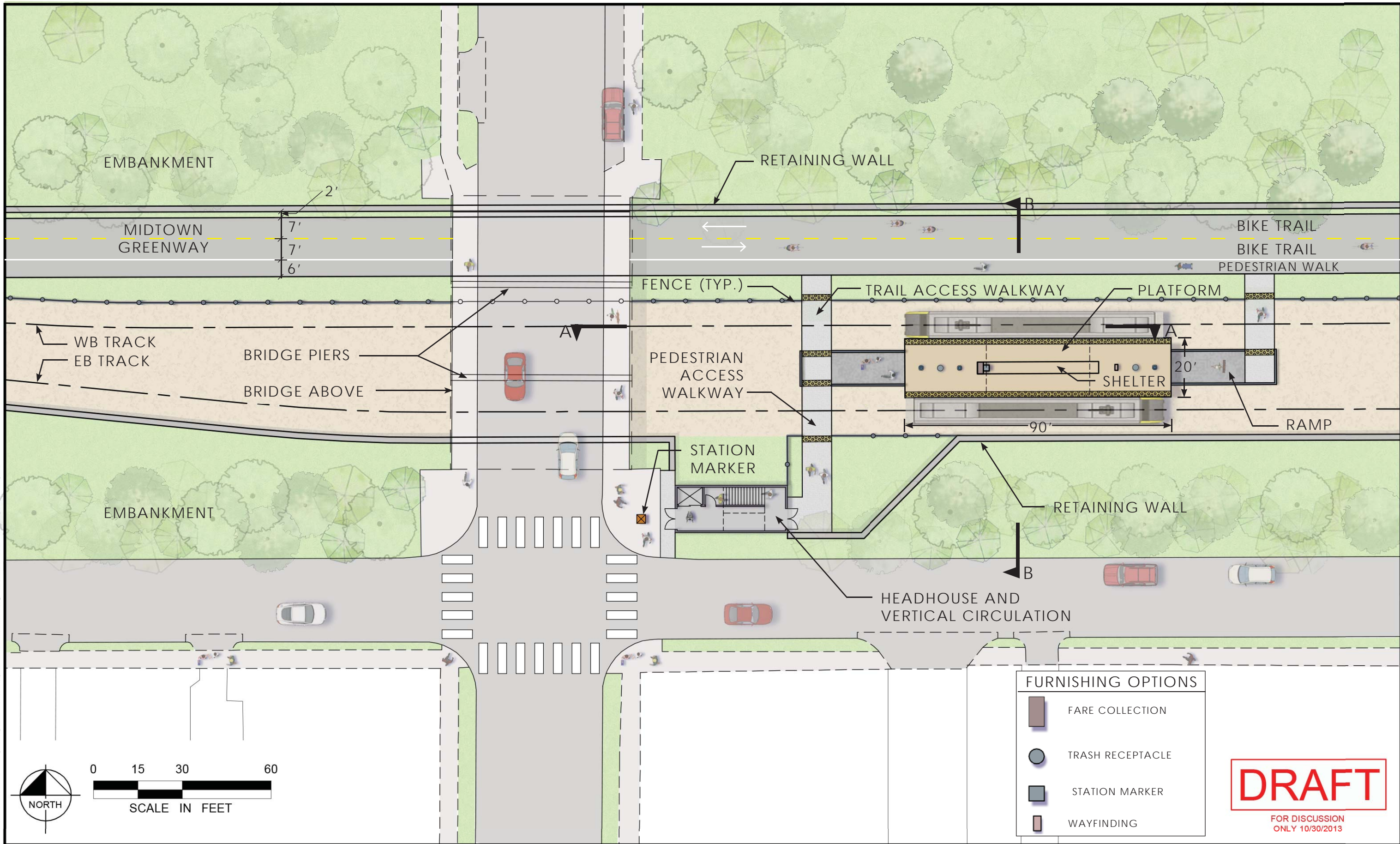
FOR DISCUSSION  
ONLY 10/30/2013

# MIDTOWN CORRIDOR ALTERNATIVES ANALYSIS

## APPENDIX B: DOUBLE/SINGLE-TRACK RAIL IN THE GREENWAY ALTERNATIVE

Sheet List	
No.	Sheet Title
1	COVER SHEET
2	VERTICAL CIRCULATION – PLAN
3	VERTICAL CIRCULATION – SECTION A–A
4	VERTICAL CIRCULATION – SECTION B–B
5	ALIGNMENT PLAN – STA. 1000+00 TO STA. 1026+00
6	ALIGNMENT PLAN – STA. 1019+00 TO STA. 1049+00
7	ALIGNMENT PLAN – STA. 1049+00 TO STA. 1079+00
8	ALIGNMENT PLAN – STA. 1079+00 TO STA. 1109+00
9	ALIGNMENT PLAN – STA. 1108+00 TO STA. 1138+00
10	ALIGNMENT PLAN – STA. 1138+00 TO STA. 1168+00
11	ALIGNMENT PLAN – STA. 1167+00 TO STA. 1197+00
12	ALIGNMENT PLAN – STA. 1197+00 TO STA. 1232+46
13	TYPICAL SECTION – HENNEPIN AVE
14	TYPICAL SECTION – DUPONT AVE
15	TYPICAL SECTION – COLFAX AVE
16	TYPICAL SECTION – LYNDAL AVE
17	TYPICAL SECTION – 2ND AVE
18	TYPICAL SECTION – CHICAGO AVE
19	TYPICAL SECTION – 14TH AVE
20	TYPICAL SECTION – BLOOMINGTON AVE
21	TYPICAL SECTION – 18TH AVE

K:\TWC\_Transit\160528015\_MIDTOWN\_AA\CAD\Plan Sheets\MG\_VERT\_CIRC.dwg October 30, 2013 - 3:40pm



**FURNISHING OPTIONS**

- FARE COLLECTION
- TRASH RECEPTACLE
- STATION MARKER
- WAYFINDING

**DRAFT**  
FOR DISCUSSION  
ONLY 10/30/2013

No.	Date	Revisions	App.	DRAWING NAME MG_VERT_CIRC.dwg
				DESIGNED BY: JRW
				DRAWN BY: JRW
				CHECKED BY: LMR
				DATE: 10/30/2013
				PROJECT NO. 160528015

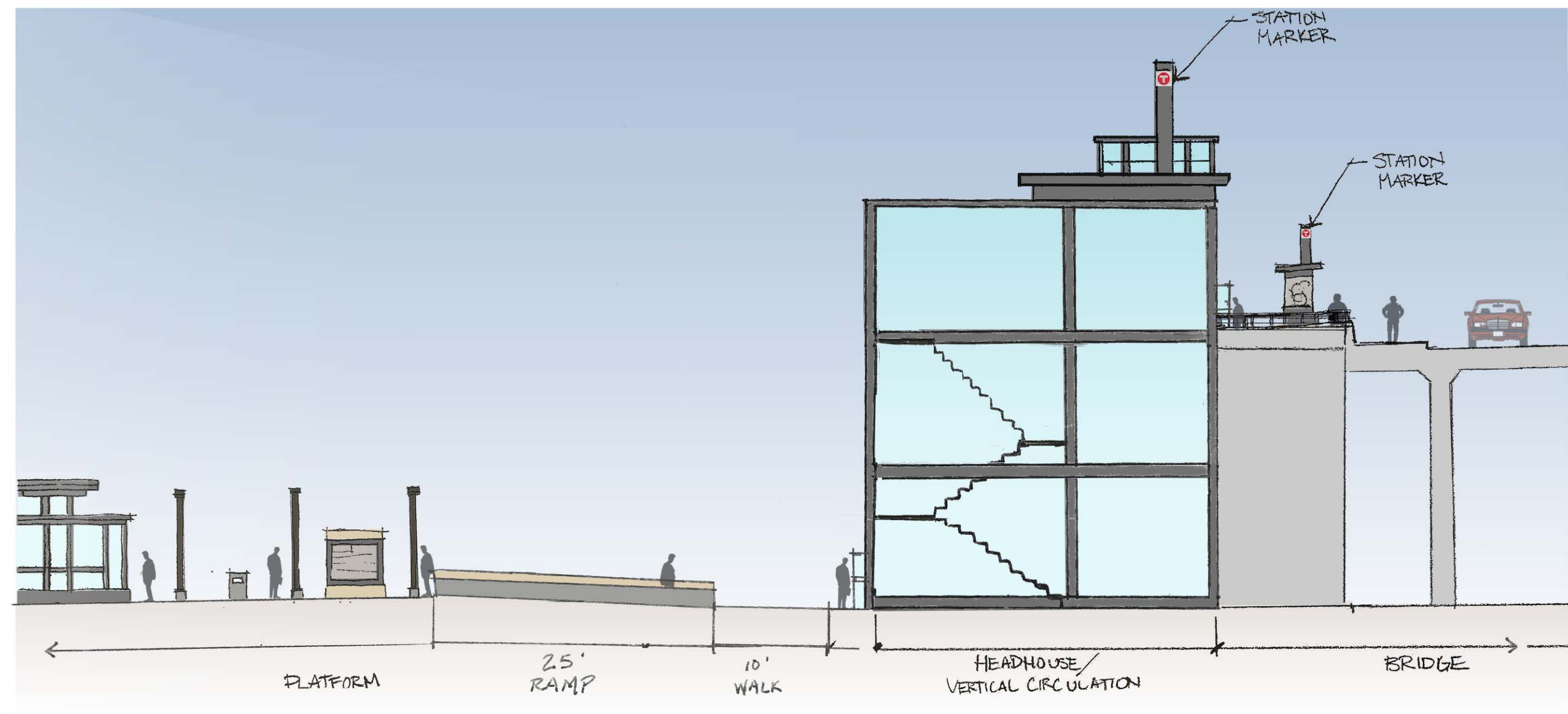


**MIDTOWN CORRIDOR  
ALTERNATIVES ANALYSIS**  
BLOOMINGTON AVE  
VERTICAL CIRCULATION

SHEET NO.  
2  
21



K:\TWC\_Transit\160528015\_MIDTOWN\_AA\CAD\Plan Sheets\MG\_VERT\_CIRC.dwg October 30, 2013 - 3:42pm



SECTION A-A (LOOKING SOUTH)



**DRAFT**

FOR DISCUSSION  
ONLY 10/30/2013

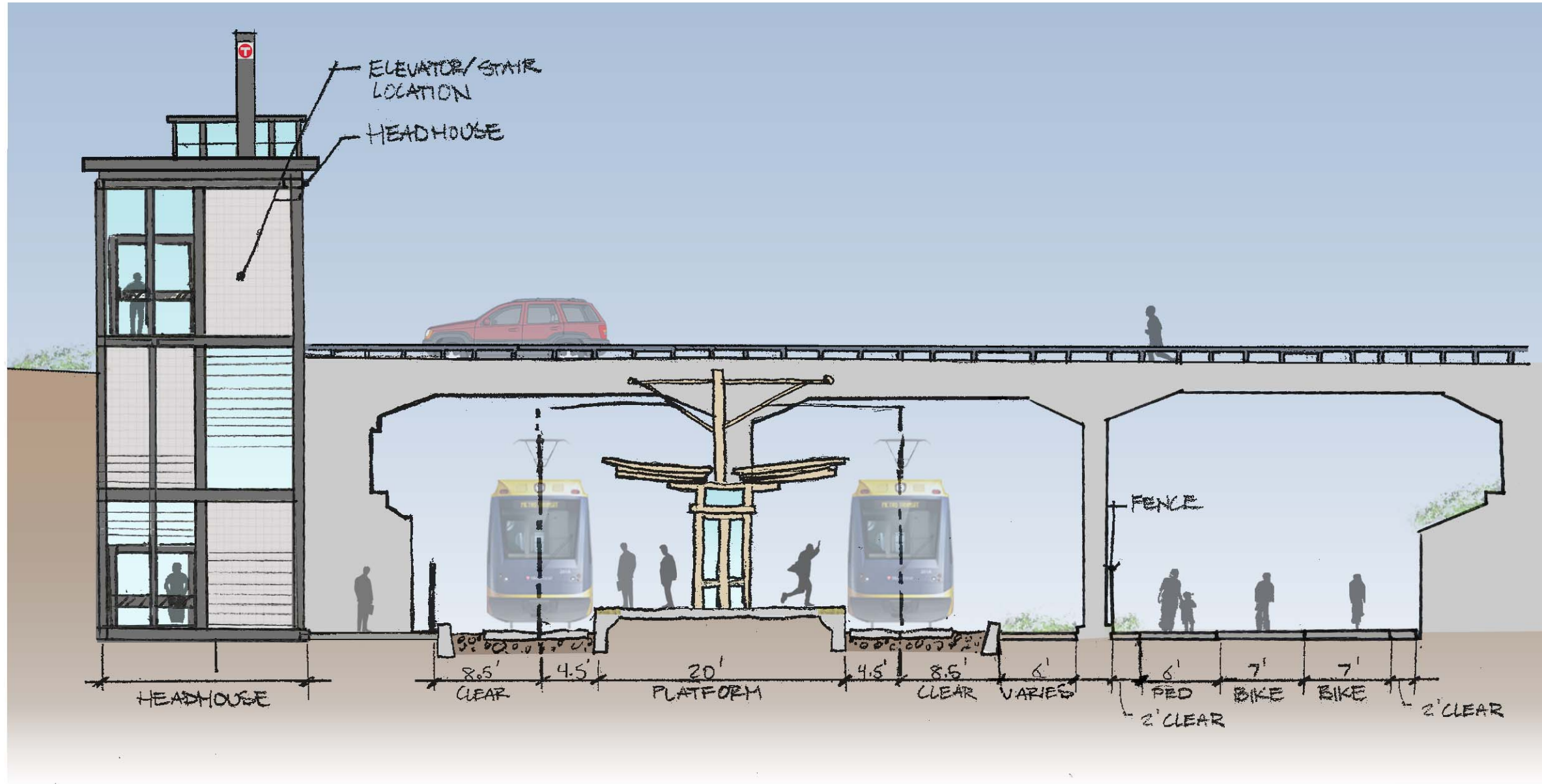
No.	Date	Revisions	App.	DRAWING NAME MG_VERT_CIRC.dwg
				DESIGNED BY: JLJ
				DRAWN BY: JLJ
				CHECKED BY: LMR
				DATE: 10/30/2013
				PROJECT NO. 160528015



MIDTOWN CORRIDOR  
ALTERNATIVES ANALYSIS  
BLOOMINGTON AVE  
SECTION A-A

SHEET NO.  
3  
21

K:\TWC\_Transit\160528015\_MIDTOWN\_AA\CAD\Plan Sheets\MG\_VERT\_CIRC.dwg October 30, 2013 - 3:42pm



SECTION B-B (LOOKING WEST)



**DRAFT**

FOR DISCUSSION  
ONLY 10/30/2013

No.	Date	Revisions	App.	DRAWING NAME MG_VERT_CIRC.dwg
				DESIGNED BY: JLW
				DRAWN BY: JLW
				CHECKED BY: LMR
				DATE: 10/30/2013
				PROJECT NO. 160528015

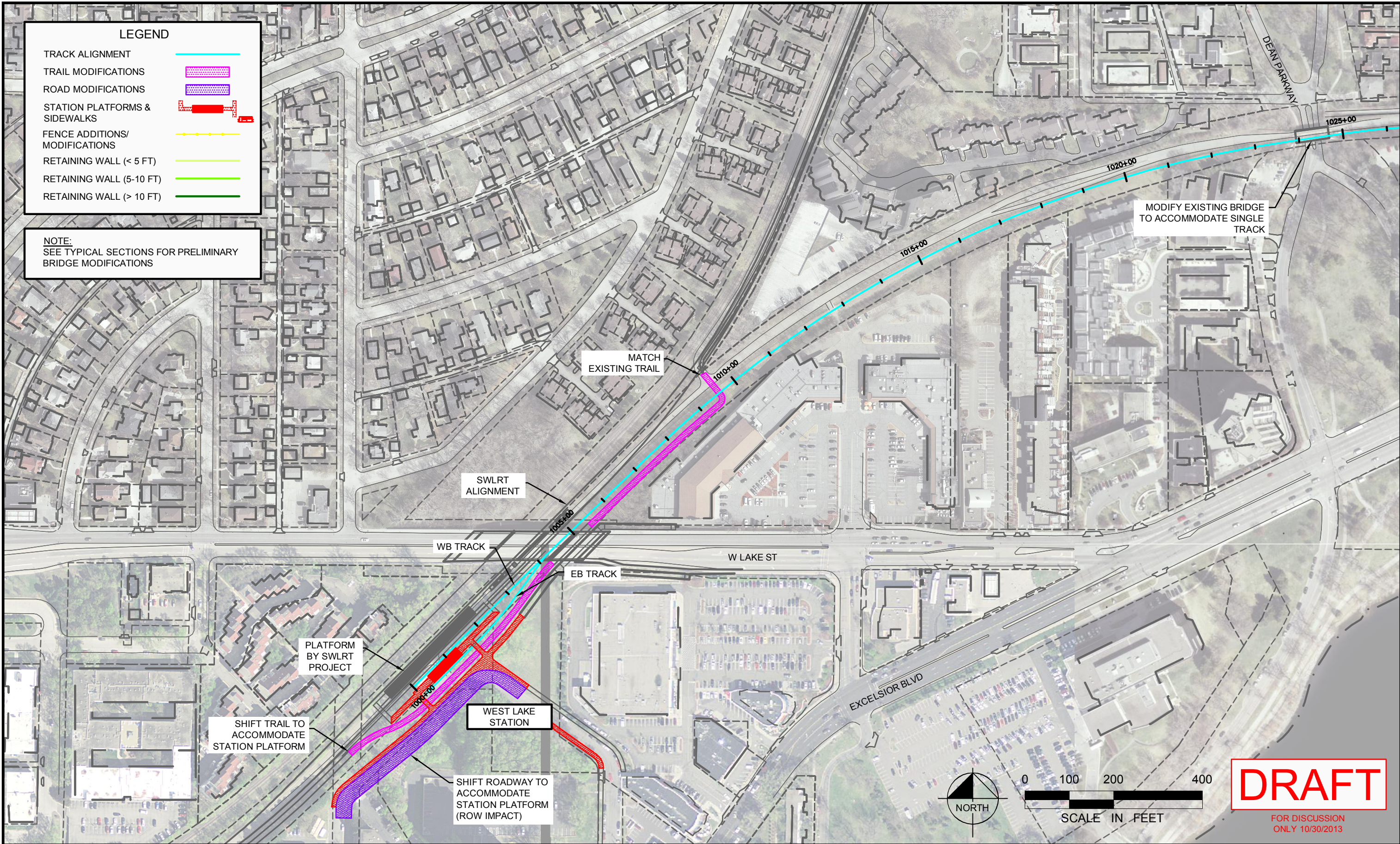


MIDTOWN CORRIDOR  
ALTERNATIVES ANALYSIS  
BLOOMINGTON AVE  
SECTION B-B

SHEET NO.  
4  
21



K:\TWC\_Transit\160528015\_MIDTOWN\_AA\CAD\Plan Sheets\MG\_PS.dwg October 30, 2013 - 7:45pm



No.	Date	Revisions	App.	DRAWING NAME MG_PS.dwg
				DESIGNED BY: EPS
				DRAWN BY: EPS
				CHECKED BY: LMR
				DATE: 10/30/2013
				PROJECT NO. 160528015



ENGINEERS  
PLANNERS  
DESIGNERS



MIDTOWN CORRIDOR  
ALTERNATIVES ANALYSIS  
ALIGNMENT PLAN  
STA 1000+00 TO STA 1026+00

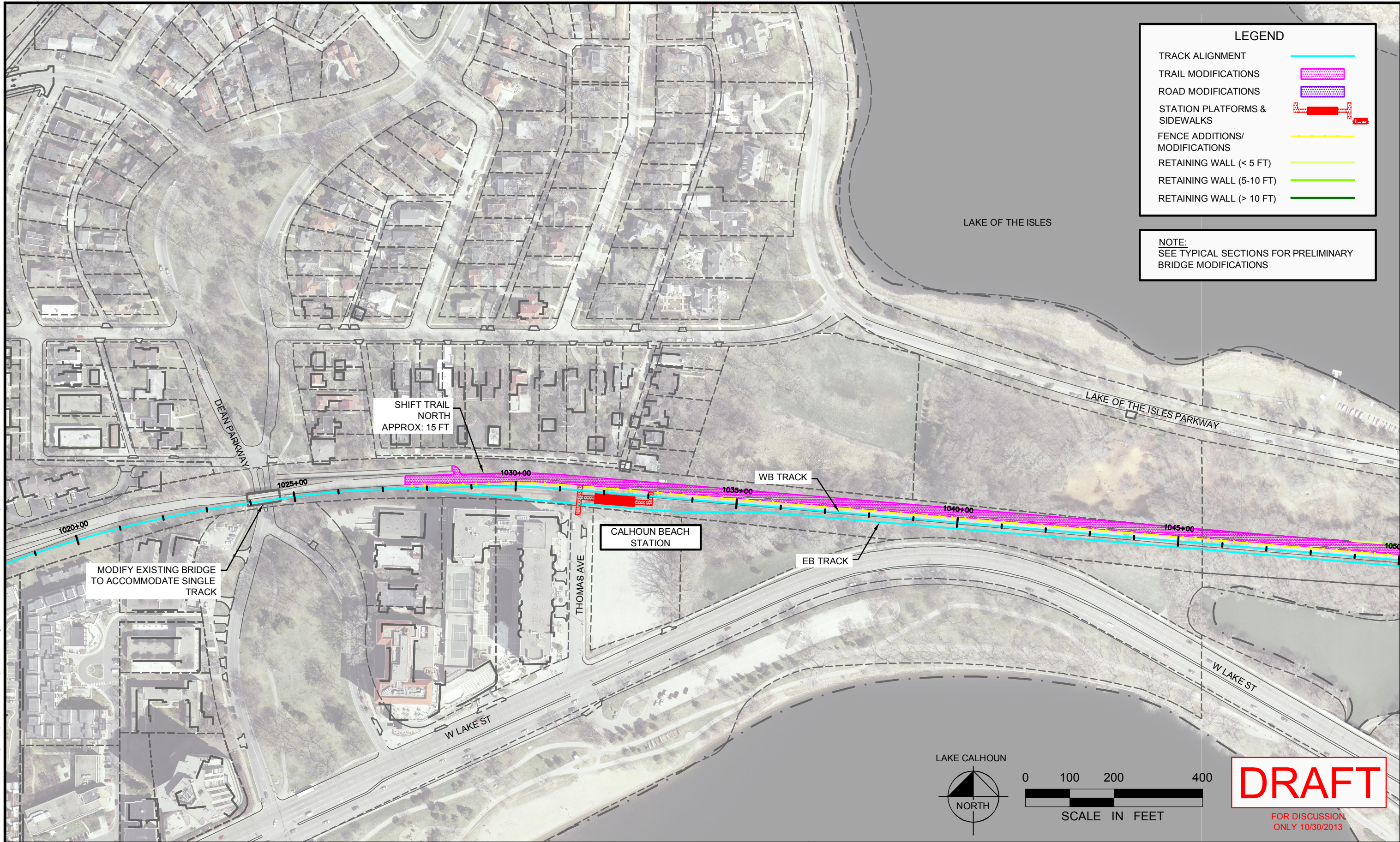
SHEET NO.  
5  
21



midtowntransitway.org



K:\TWC\_Transit\160528015\_MIDTOWN\_AA\CAD\Plan Sheets\MG\_PS.dwg October 30, 2013 - 7:45pm



No.	Date	Revisions	App.	DRAWING NAME MG_PS.dwg
				DESIGNED BY: EPS
				DRAWN BY: EPS
				CHECKED BY: LMR
				DATE: 10/30/2013
				PROJECT NO. 160528015



ENGINEERS  
PLANNERS  
DESIGNERS



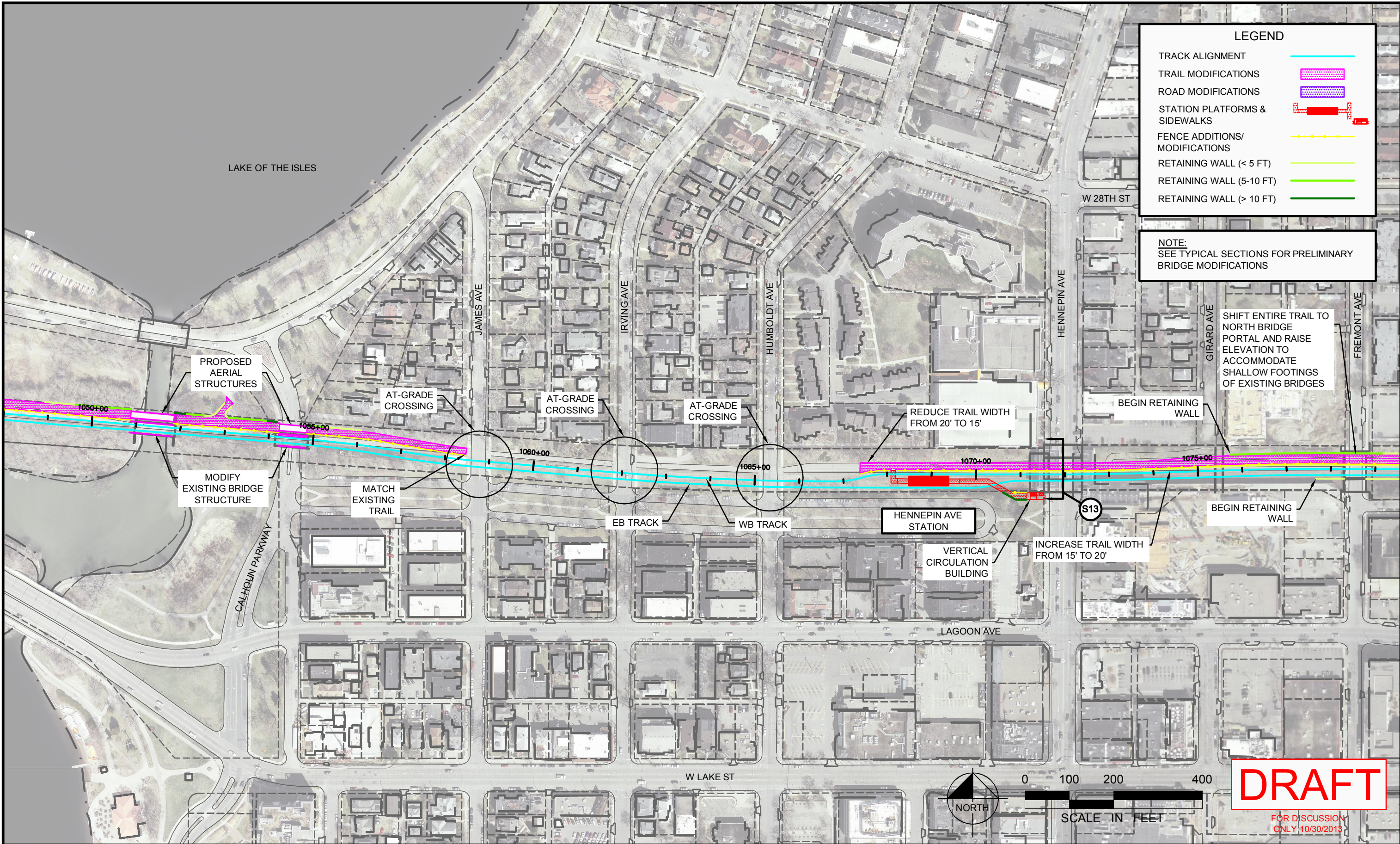
MIDTOWN CORRIDOR  
ALTERNATIVES ANALYSIS  
ALIGNMENT PLAN  
STA 1019+00 TO STA 1049+00

SHEET NO.  
6  
21





K:\TWC\_Transit\160528015\_MIDTOWN\_AA\CAD\Plan Sheets\MG\_PS.dwg October 30, 2013 - 7:45pm



No.	Date	Revisions	App.	DRAWING NAME MG_PS.dwg
				DESIGNED BY: EPS
				DRAWN BY: EPS
				CHECKED BY: LMR
				DATE: 10/30/2013
				PROJECT NO. 160528015



ENGINEERS  
PLANNERS  
DESIGNERS

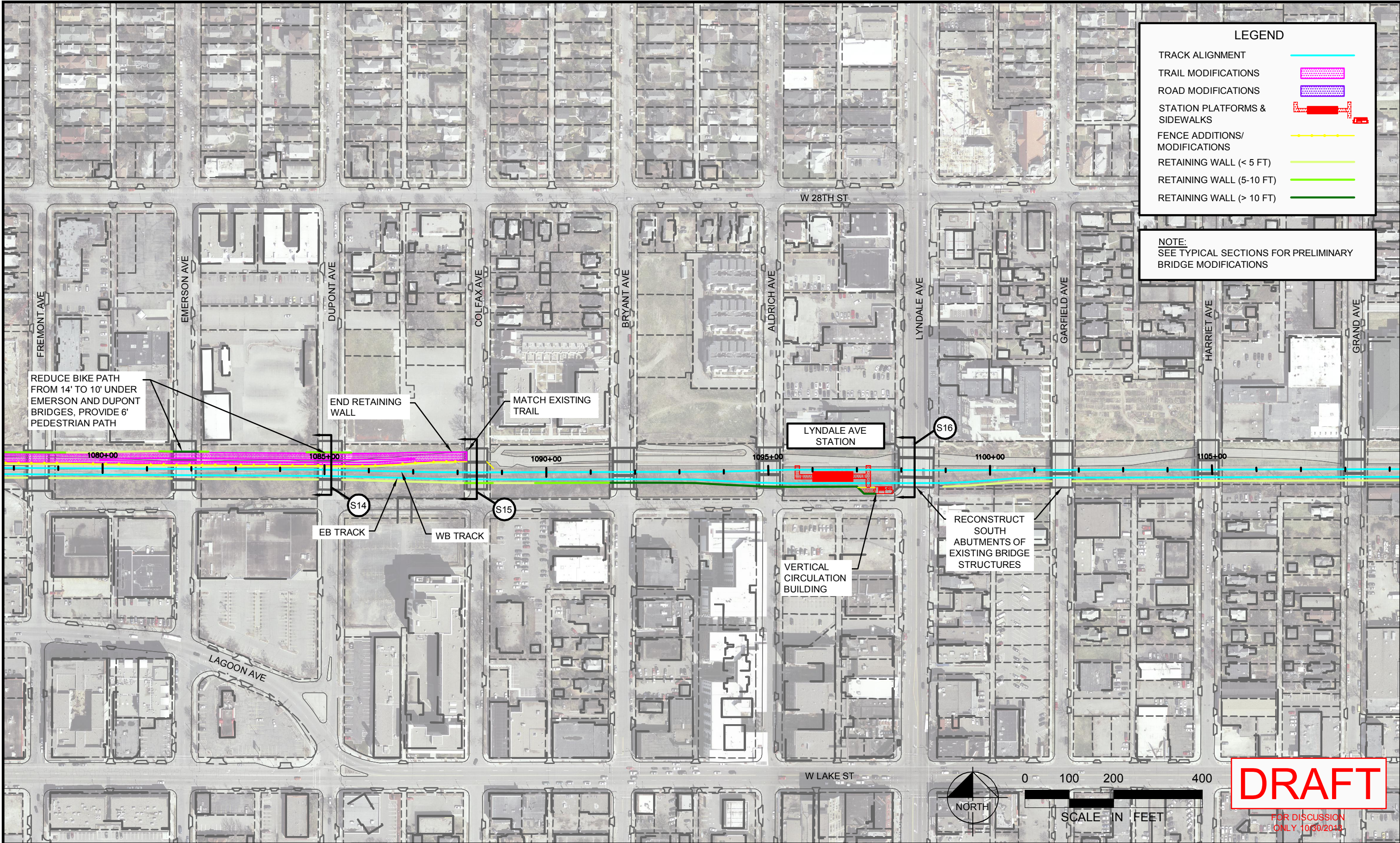


MIDTOWN CORRIDOR  
ALTERNATIVES ANALYSIS  
ALIGNMENT PLAN  
STA 1049+00 TO STA 1079+00

SHEET NO.  
7  
21



K:\TWC\_Transit\160528015\_MIDTOWN\_AA\CAD\Plan Sheets\MG\_PS.dwg October 30, 2013 - 7:45pm



No.	Date	Revisions	App.	DRAWING NAME MG_PS.dwg
				DESIGNED BY: EPS
				DRAWN BY: EPS
				CHECKED BY: LMR
				DATE: 10/30/2013
				PROJECT NO. 160528015



ENGINEERS  
PLANNERS  
DESIGNERS



Kimley-Horn  
and Associates, Inc.



LTK Engineering Services



MIDTOWN CORRIDOR  
ALTERNATIVES ANALYSIS  
ALIGNMENT PLAN  
STA 1079+00 TO STA 1109+00

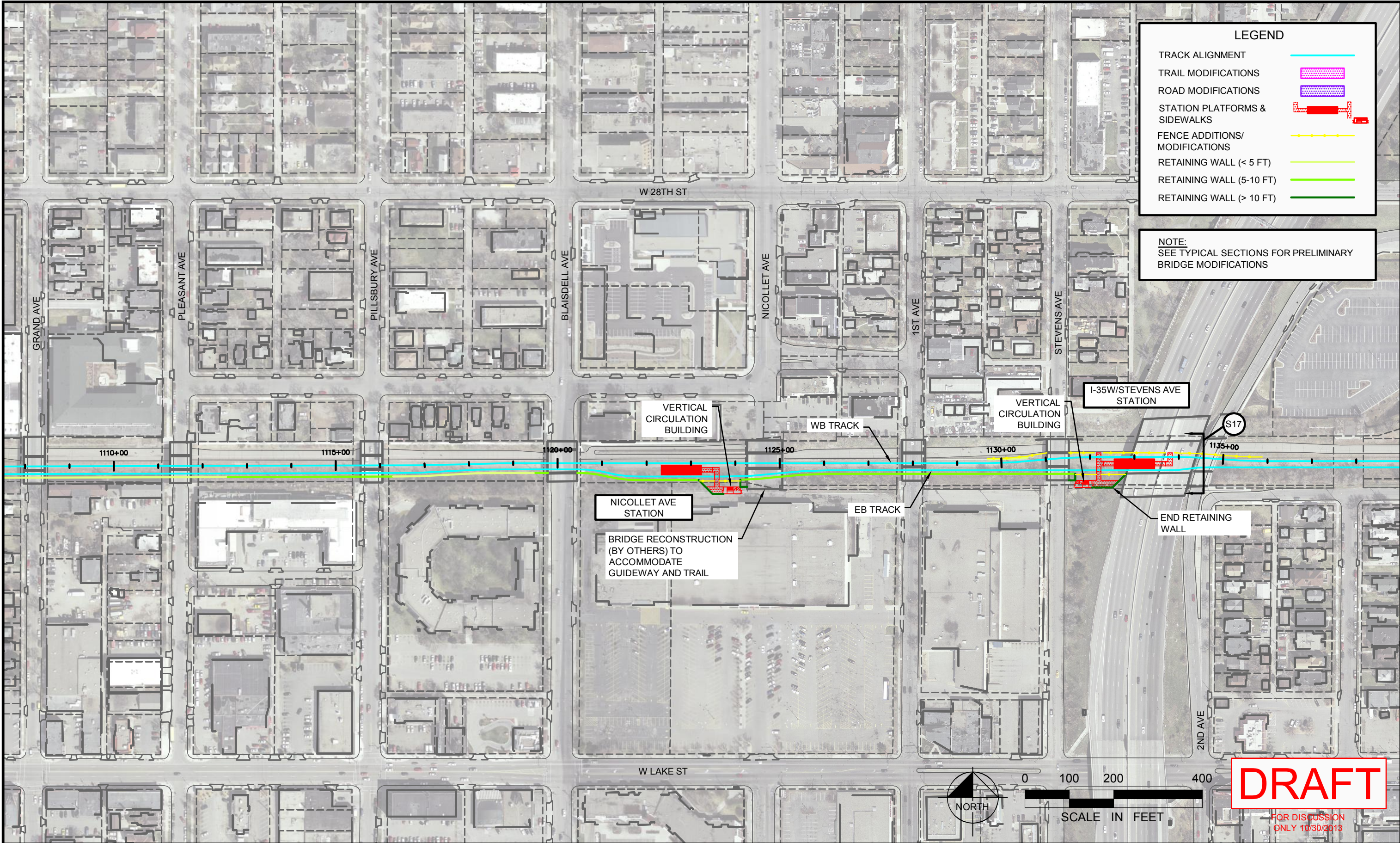
SHEET NO.  
8  
21



midtowntransitway.org



K:\TWC\_Transit\160528015\_MIDTOWN\_AA\CAD\Plan Sheets\WG\_PS.dwg October 30, 2013 - 7:45pm



LEGEND

TRACK ALIGNMENT

TRAIL MODIFICATIONS

ROAD MODIFICATIONS

STATION PLATFORMS & SIDEWALKS

FENCE ADDITIONS/ MODIFICATIONS

RETAINING WALL (< 5 FT)

RETAINING WALL (5-10 FT)

RETAINING WALL (> 10 FT)

NOTE:  
SEE TYPICAL SECTIONS FOR PRELIMINARY  
BRIDGE MODIFICATIONS

DRAFT

FOR DISCUSSION  
ONLY 10/30/2013

No.	Date	Revisions	App.	DRAWING NAME MG_PS.dwg
				DESIGNED BY: EPS
				DRAWN BY: EPS
				CHECKED BY: LMR
				DATE: 10/30/2013
				PROJECT NO. 160528015



ENGINEERS  
PLANNERS  
DESIGNERS



Kimley-Horn  
and Associates, Inc.



LTK Engineering Services



MIDTOWN CORRIDOR  
ALTERNATIVES ANALYSIS  
ALIGNMENT PLAN  
STA 1108+00 TO STA 1138+00

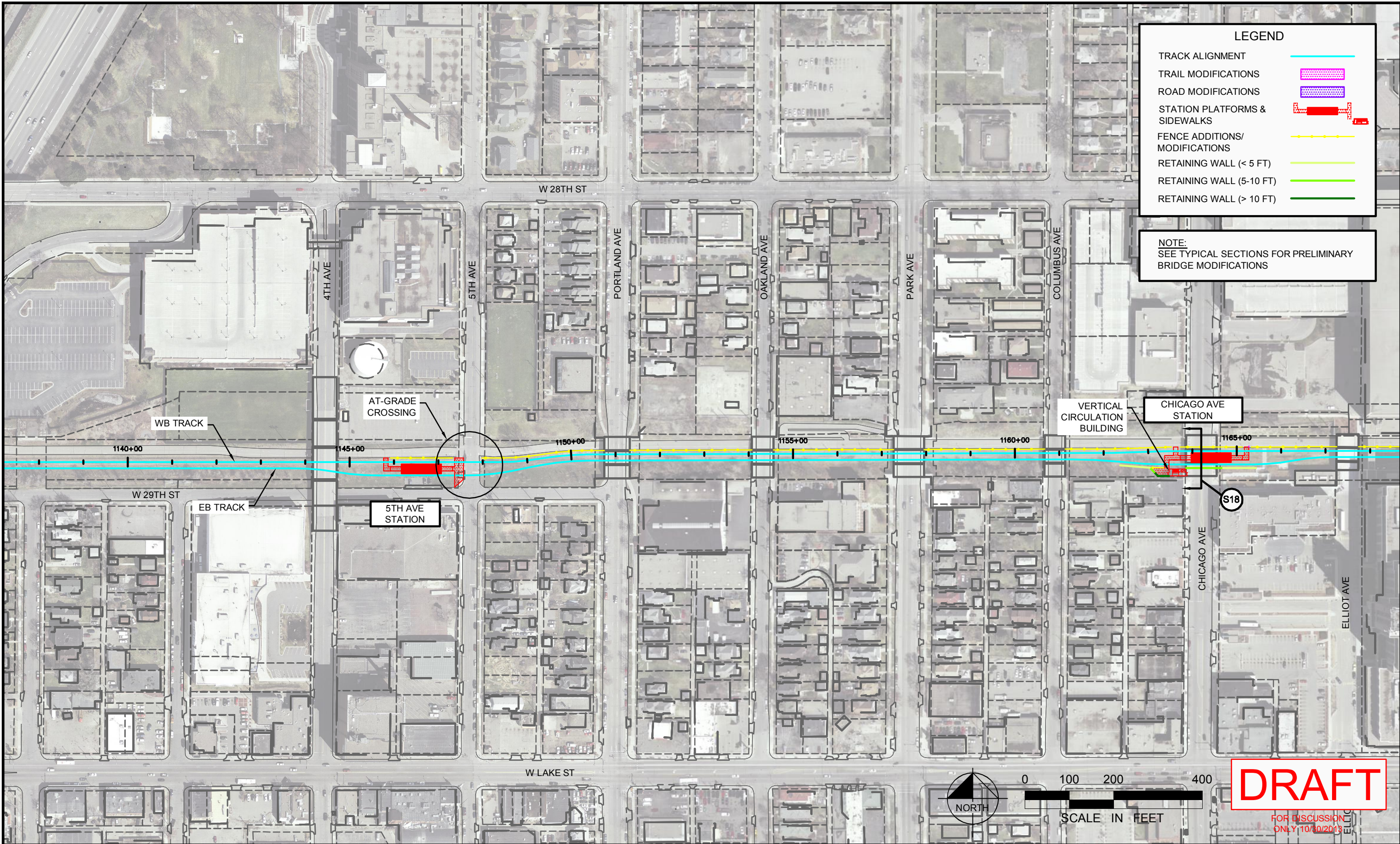
SHEET NO.  
9  
21



midtowntransitway.org



K:\TWC\_Transit\160528015\_MIDTOWN\_AA\CAD\Plan Sheets\MG\_PS.dwg October 30, 2013 - 7:45pm



**LEGEND**

- TRACK ALIGNMENT
- TRAIL MODIFICATIONS
- ROAD MODIFICATIONS
- STATION PLATFORMS & SIDEWALKS
- FENCE ADDITIONS/ MODIFICATIONS
- RETAINING WALL (< 5 FT)
- RETAINING WALL (5-10 FT)
- RETAINING WALL (> 10 FT)

**NOTE:**  
SEE TYPICAL SECTIONS FOR PRELIMINARY  
BRIDGE MODIFICATIONS

**DRAFT**

FOR DISCUSSION  
ONLY 10/30/2013

No.	Date	Revisions	App.	DRAWING NAME MG_PS.dwg
				DESIGNED BY: EPS
				DRAWN BY: EPS
				CHECKED BY: LMR
				DATE: 10/30/2013
				PROJECT NO. 160528015



ENGINEERS  
PLANNERS  
DESIGNERS



Kimley-Horn  
and Associates, Inc.



LTK Engineering Services



**MIDTOWN CORRIDOR  
ALTERNATIVES ANALYSIS**  
ALIGNMENT PLAN  
STA 1138+00 TO STA 1168+00

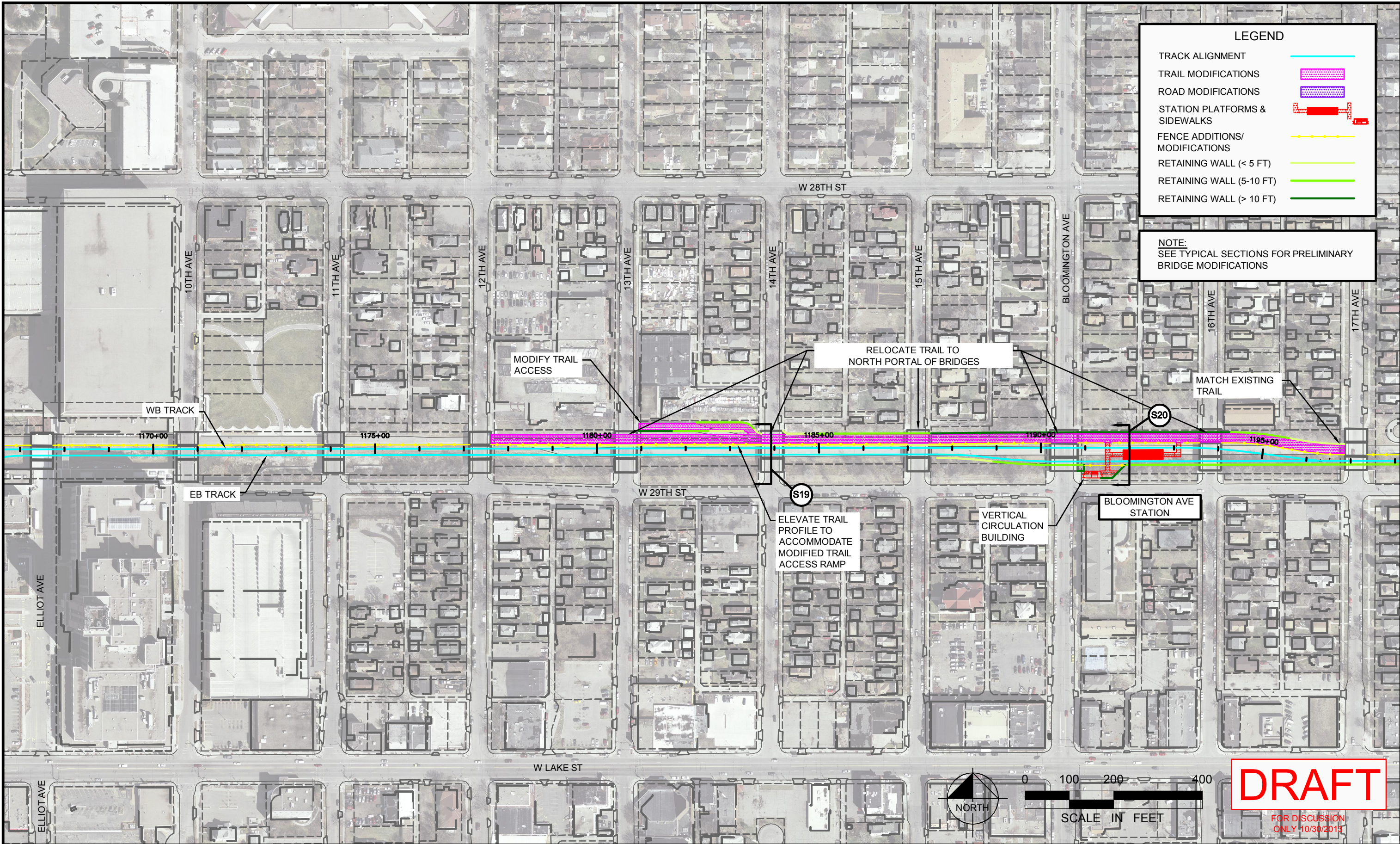
SHEET NO.  
10  
21



midtowntransitway.org



K:\TWC\_Transit\160528015\_MIDTOWN\_AA\CAD\Plan Sheets\MG\_PS.dwg October 30, 2013 - 7:45pm



No.	Date	Revisions	App.	DRAWING NAME MG_PS.dwg
				DESIGNED BY: EPS
				DRAWN BY: EPS
				CHECKED BY: LMR
				DATE: 10/30/2013
				PROJECT NO. 160528015



ENGINEERS  
PLANNERS  
DESIGNERS



Kimley-Horn  
and Associates, Inc.



LTK Engineering Services



MIDTOWN CORRIDOR  
ALTERNATIVES ANALYSIS  
ALIGNMENT PLAN  
STA 1167+00 TO STA 1197+00



midtowntransitway.org

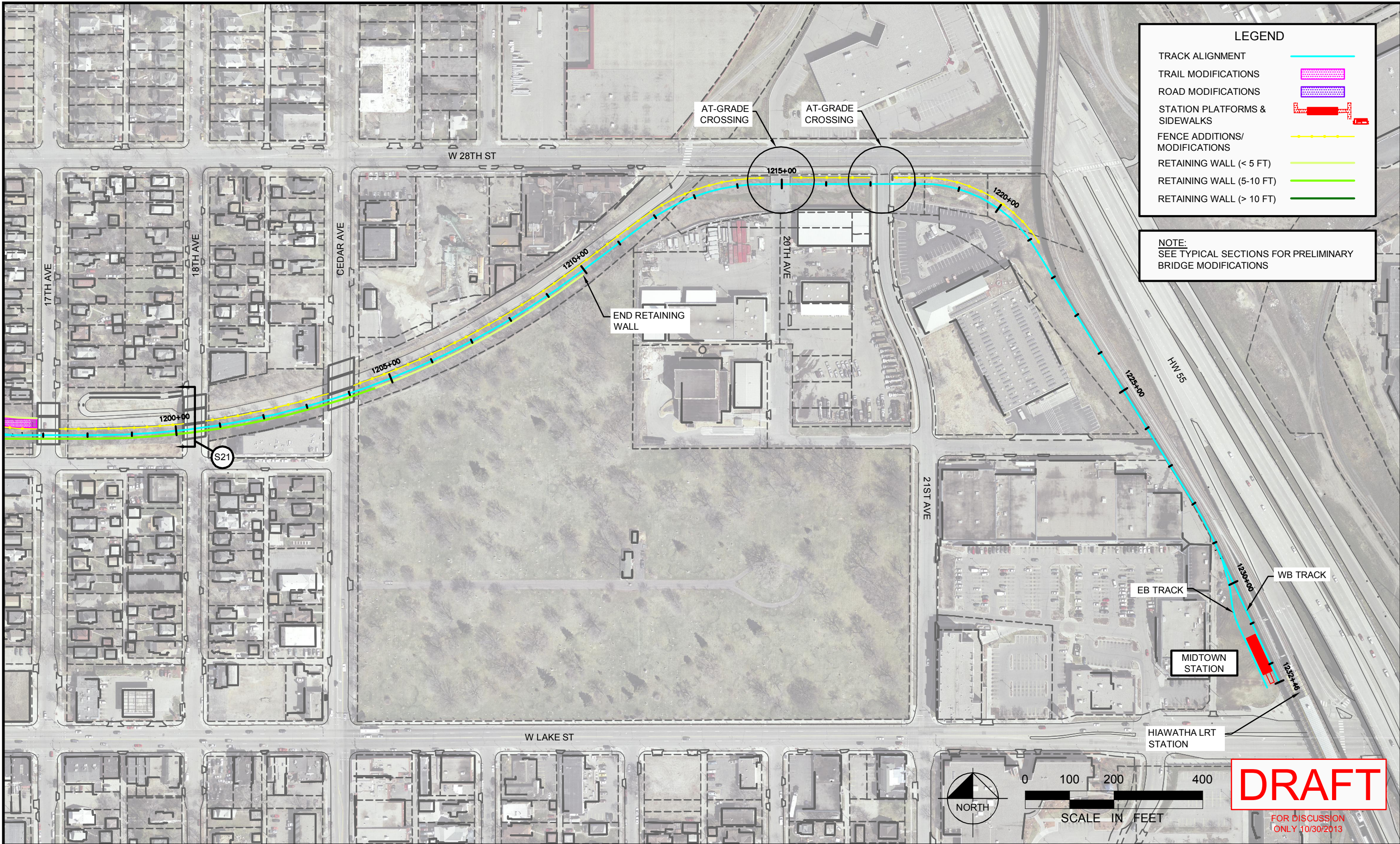
**DRAFT**

FOR DISCUSSION  
ONLY 10/30/2013

SHEET NO.  
11  
21



K:\TWC\_Transit\160528015\_MIDTOWN\_AA\CAD\Plan Sheets\MG\_PS.dwg October 30, 2013 - 7:46pm



No.	Date	Revisions	App.	DRAWING NAME MG_PS.dwg
				DESIGNED BY: EPS
				DRAWN BY: EPS
				CHECKED BY: LMR
				DATE: 10/30/2013
				PROJECT NO. 160528015



ENGINEERS  
PLANNERS  
DESIGNERS



Kimley-Horn  
and Associates, Inc.



LTK Engineering Services



MIDTOWN CORRIDOR  
ALTERNATIVES ANALYSIS  
ALIGNMENT PLAN  
STA 1197+00 TO STA 1232+46

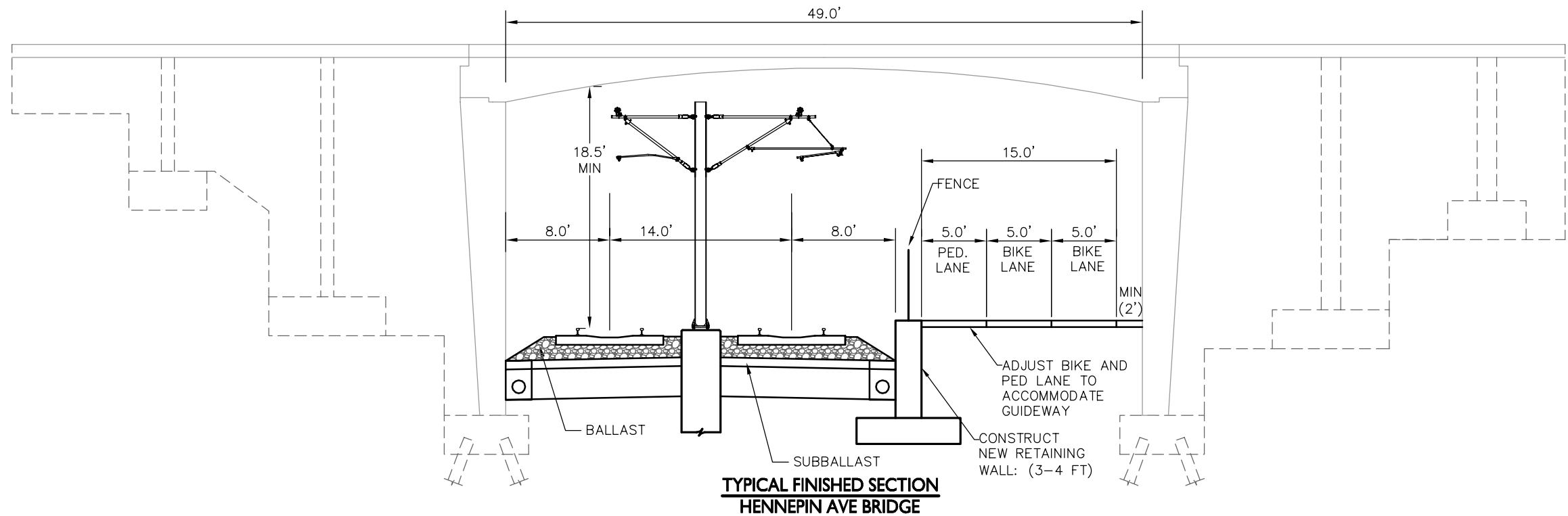
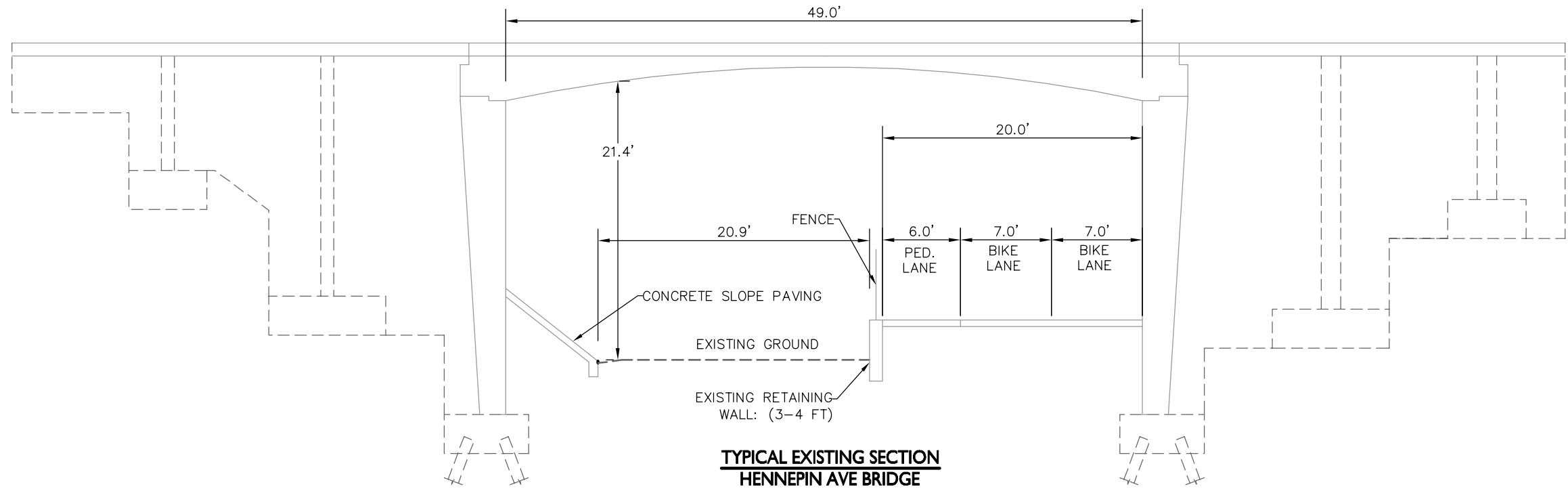
SHEET NO.  
12  
21



midtowntransitway.org



K:\TWC\_Transit\160528015\_MIDTOWN\_AA\CAD\Plan Sheets\MG\_SECT.dwg October 30, 2013 - 3:48pm



**DRAFT**  
FOR DISCUSSION  
ONLY 10/29/2013

No.	Date	Revisions	App.	DRAWING NAME MG_SECT.dwg
				DESIGNED BY: EPS
				DRAWN BY: EPS
				CHECKED BY: LMR
				DATE: 10/30/2013
				PROJECT NO. 160528015



ENGINEERS  
PLANNERS  
DESIGNERS



Kimley-Horn  
and Associates, Inc.



LTK Engineering Services



MIDTOWN CORRIDOR  
ALTERNATIVES ANALYSIS  
GREENWAY BRIDGES  
TYPICAL SECTION - HENNEPIN AVE

SHEET NO.

13

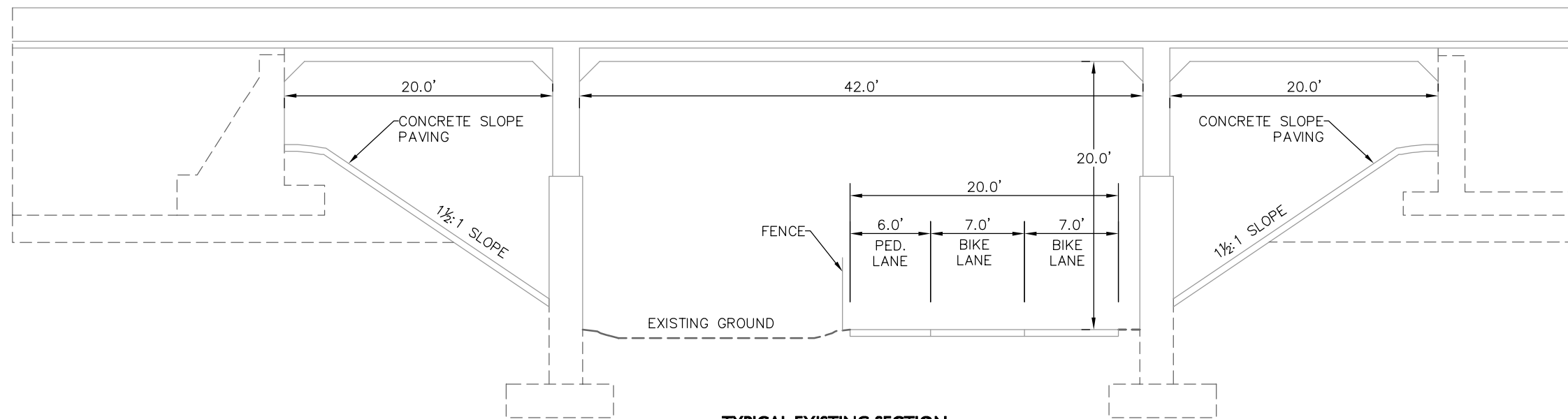
21



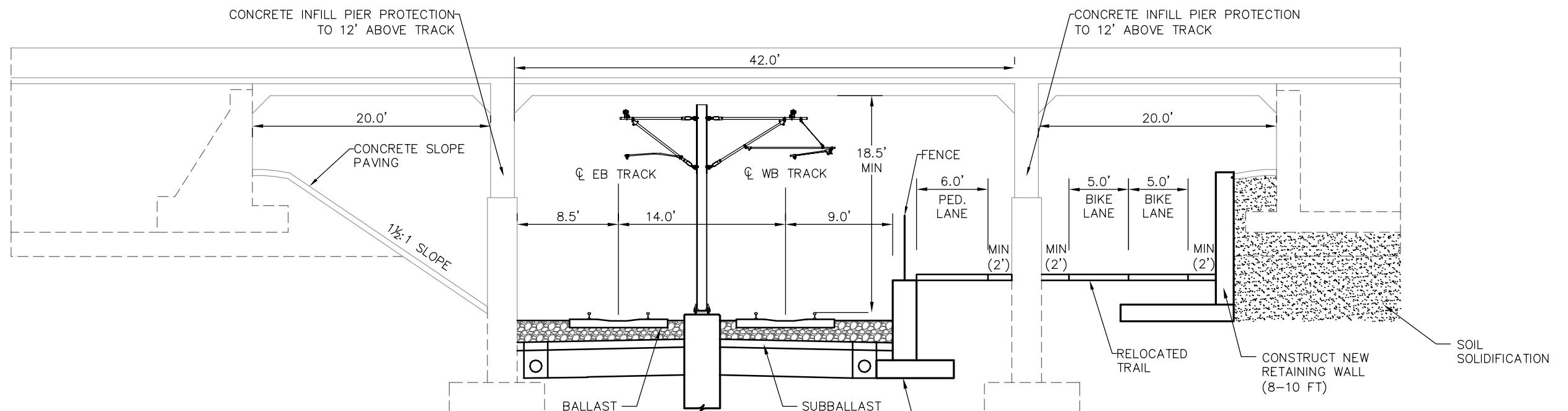
midtowntransitway.org



K:\TWC\_Transit\160528015\_MIDTOWN\_AA\CAD\Plan Sheets\MG\_SECT.dwg October 30, 2013 - 3:48pm

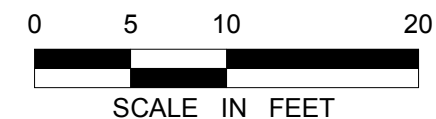


**TYPICAL EXISTING SECTION  
DUPONT BRIDGE**



**TYPICAL FINISHED SECTION  
DUPONT BRIDGE**

NOTE:  
BRIDGE SECTION SIMILAR TO:  
EMERSON AVE



**DRAFT**  
FOR DISCUSSION  
ONLY 10/29/2013

No.	Date	Revisions	App.	DRAWING NAME MG_SECT.dwg
				DESIGNED BY: EPS
				DRAWN BY: EPS
				CHECKED BY: LMR
				DATE: 10/30/2013
				PROJECT NO. 160528015

**SRE**  
Consulting Group, Inc.  
ENGINEERS  
PLANNERS  
DESIGNERS

**KH**  
Kimley-Horn  
and Associates, Inc.

**LTK**  
LTK Engineering Services

**MetroTransit**

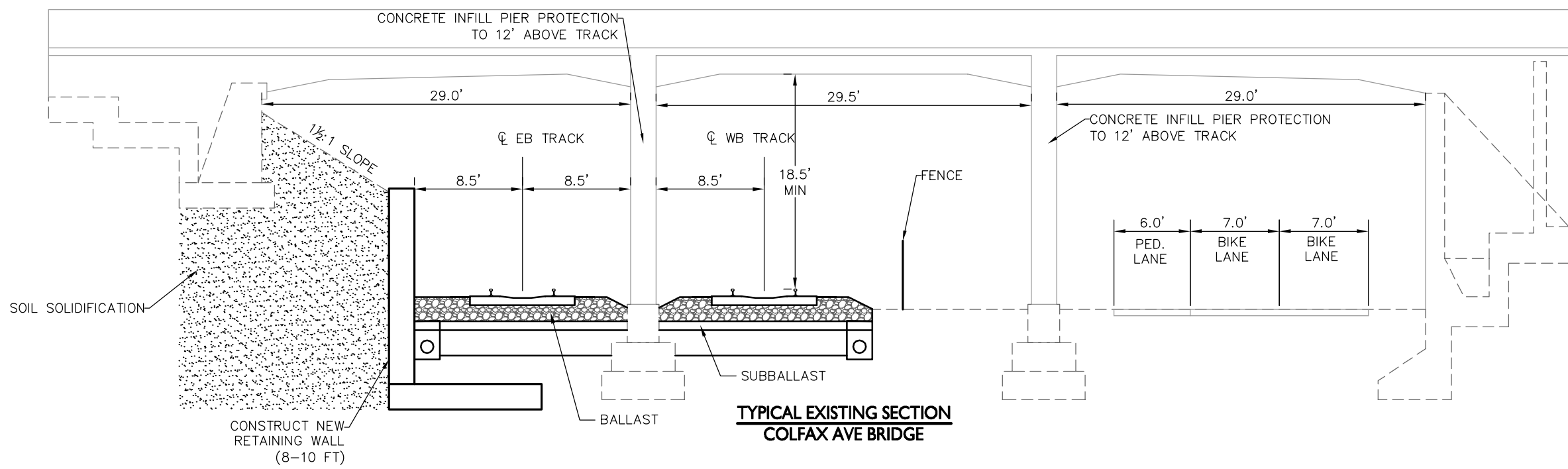
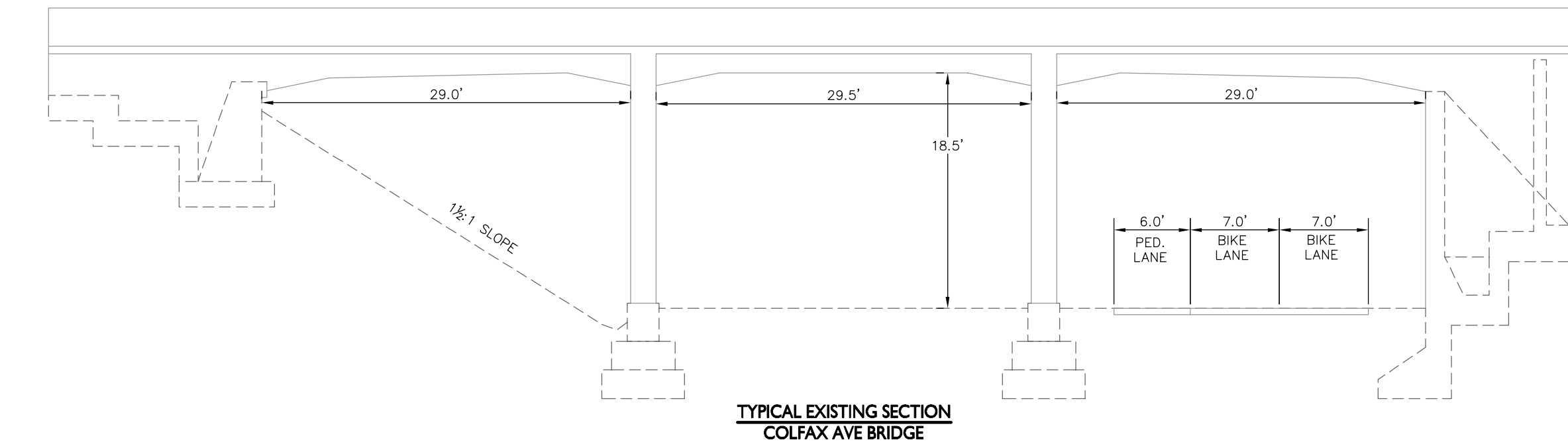
**MIDTOWN CORRIDOR  
ALTERNATIVES ANALYSIS**  
GREENWAY BRIDGES  
TYPICAL SECTION - DUPONT AVE

SHEET NO.  
14  
21

 [midtowntransitway.org](http://midtowntransitway.org)



K:\TWC\_Transit\160528015\_MIDTOWN\_AA\CAD\Plan Sheets\MG\_SECT.dwg October 30, 2013 - 3:48pm



NOTE:  
BRIDGE SECTION SIMILAR TO:  
BRYANT, ALDRICH, HARRIET, GRAND, AND 1ST AVE



**DRAFT**  
FOR DISCUSSION  
ONLY 10/29/2013

No.	Date	Revisions	App.	DRAWING NAME MG_SECT.dwg
				DESIGNED BY: EPS
				DRAWN BY: EPS
				CHECKED BY: LMR
				DATE: 10/30/2013
				PROJECT NO. 160528015



ENGINEERS  
PLANNERS  
DESIGNERS



Kimley-Horn  
and Associates, Inc.



LTK Engineering Services



MIDTOWN CORRIDOR  
ALTERNATIVES ANALYSIS  
GREENWAY BRIDGES  
TYPICAL SECTION - COLFAX AVE

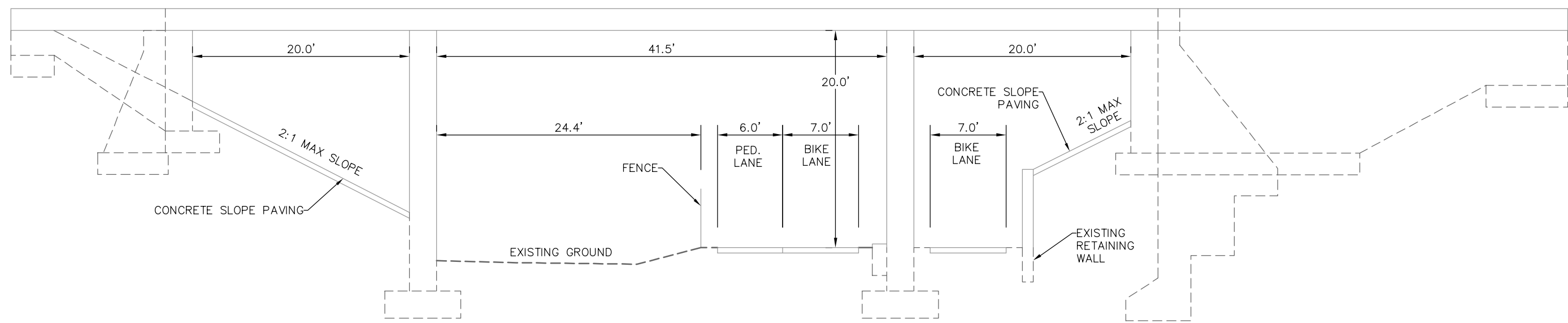
SHEET NO.  
15  
21



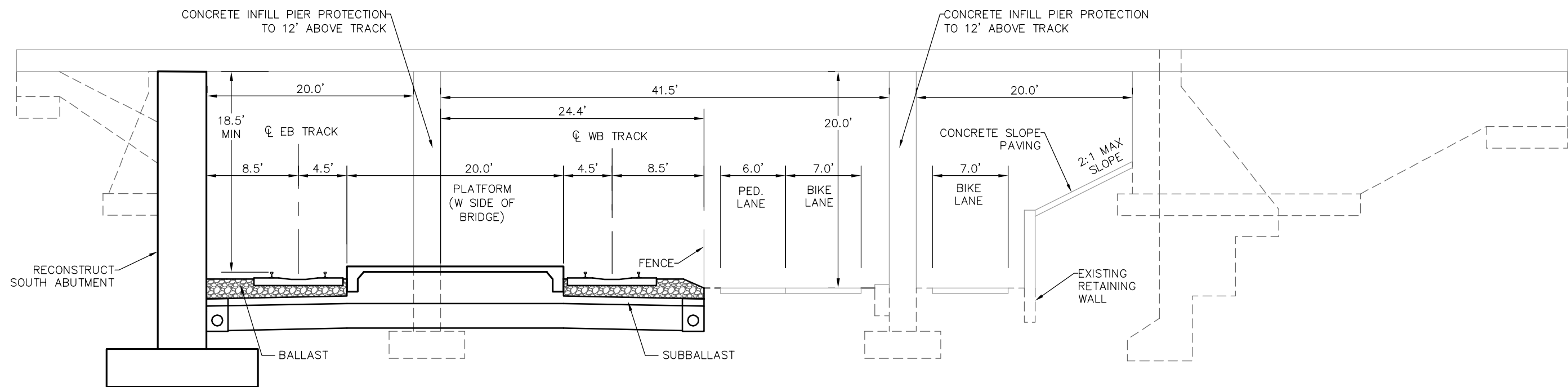
midtowntransitway.org



K:\TWC\_Transit\160528015\_MIDTOWN\_AA\CAD\Plan Sheets\MG\_SECT.dwg October 30, 2013 - 3:48pm

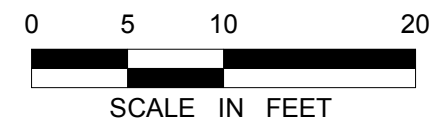


**TYPICAL EXISTING SECTION**  
**LYNDALE AVE**



**TYPICAL FINISHED SECTION**  
**LYNDALE AVE**

NOTE:  
BRIDGE SECTION SIMILAR TO:  
GARFIELD AVE



**DRAFT**  
FOR DISCUSSION  
ONLY 10/29/2013

No.	Date	Revisions	App.	DRAWING NAME MG_SECT.dwg
				DESIGNED BY: EPS
				DRAWN BY: EPS
				CHECKED BY: LMR
				DATE: 10/30/2013
				PROJECT NO. 160528015



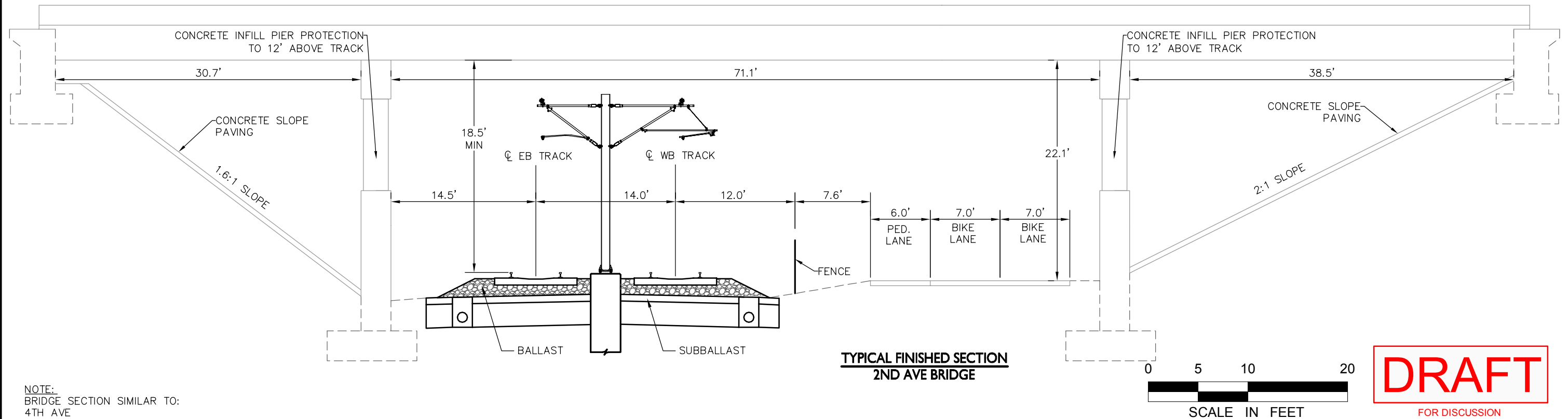
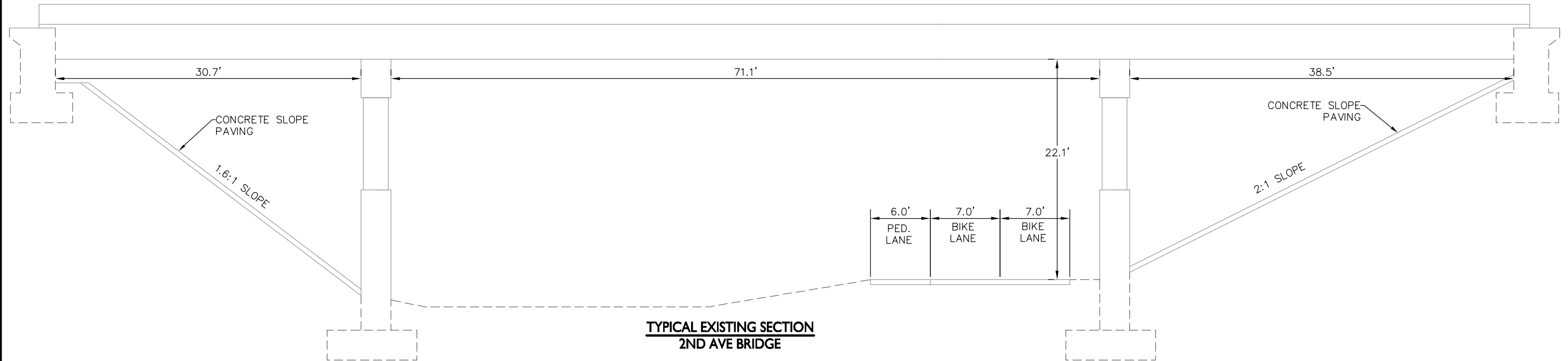
**MIDTOWN CORRIDOR  
ALTERNATIVES ANALYSIS**  
GREENWAY BRIDGES  
TYPICAL SECTION - LYNDALE AVE

SHEET NO.  
16  
21





K:\TWC\_Transit\160528015\_MIDTOWN\_AA\CAD\Plan Sheets\MG\_SECT.dwg October 30, 2013 - 3:48pm



**DRAFT**

FOR DISCUSSION  
ONLY 10/29/2013

No.	Date	Revisions	App.	DRAWING NAME MG_SECT.dwg
				DESIGNED BY: EPS
				DRAWN BY: EPS
				CHECKED BY: LMR
				DATE: 10/30/2013
				PROJECT NO. 160528015



ENGINEERS  
PLANNERS  
DESIGNERS



Kimley-Horn  
and Associates, Inc.



LTK Engineering Services



MIDTOWN CORRIDOR  
ALTERNATIVES ANALYSIS  
GREENWAY BRIDGES  
TYPICAL SECTION - 2ND AVE

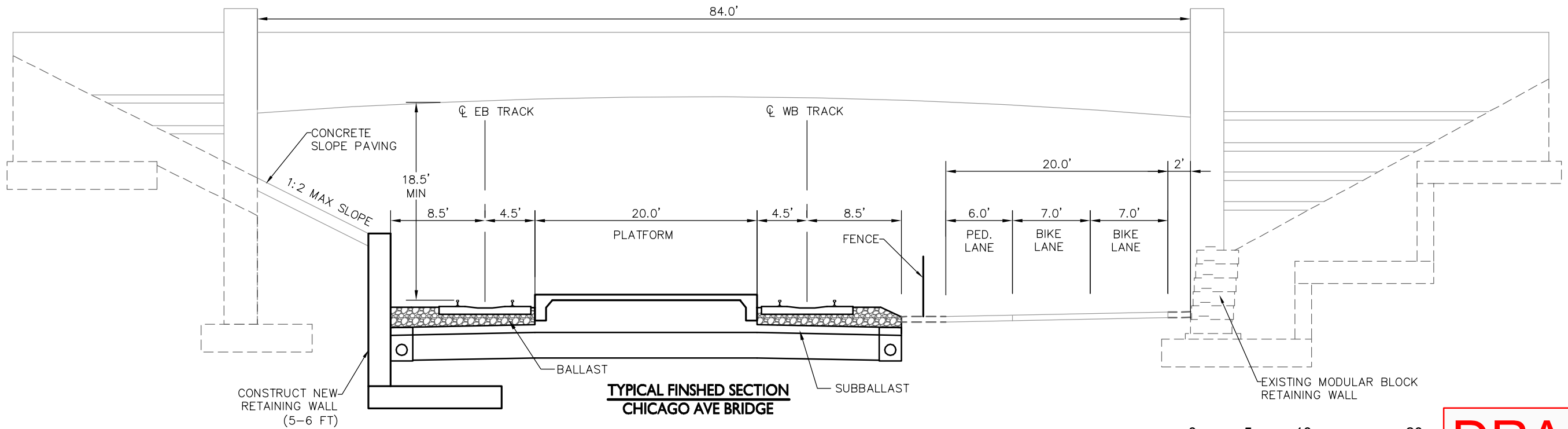
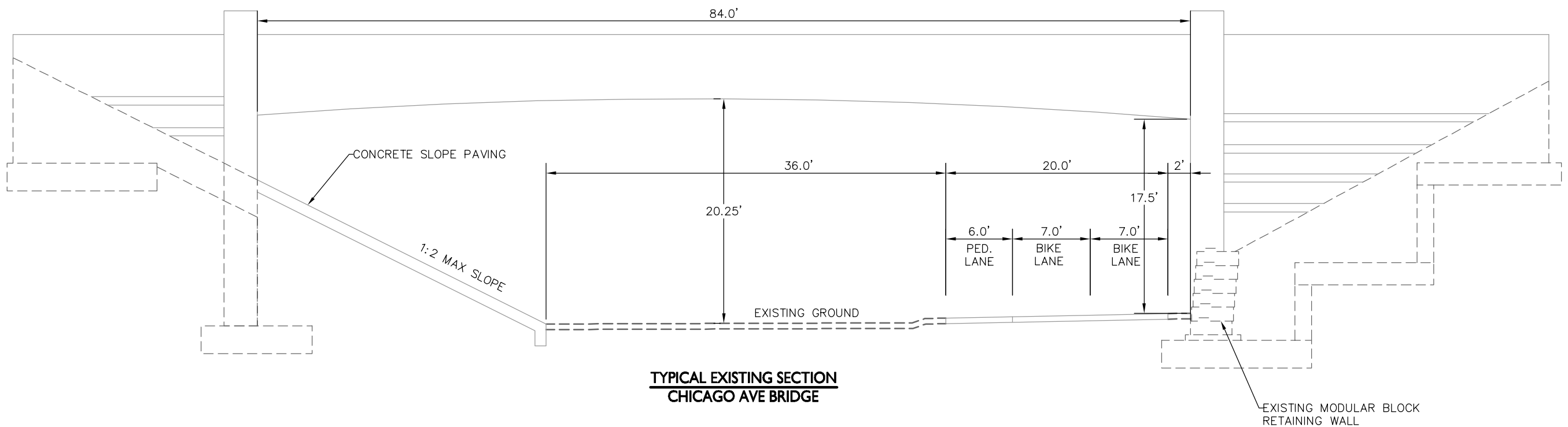
SHEET NO.  
17  
21



midtowntransitway.org



K:\TWC\_Transit\160528015\_MIDTOWN\_AA\CAD\Plan Sheets\MG\_SECT.dwg October 30, 2013 - 3:48pm



NOTE:  
BRIDGE SECTION SIMILAR TO:  
35W, AND PARK AVE



**DRAFT**  
FOR DISCUSSION  
ONLY 10/29/2013

No.	Date	Revisions	App.	DRAWING NAME MG_SECT.dwg
				DESIGNED BY: EPS
				DRAWN BY: EPS
				CHECKED BY: LMR
				DATE: 10/30/2013
				PROJECT NO. 160528015

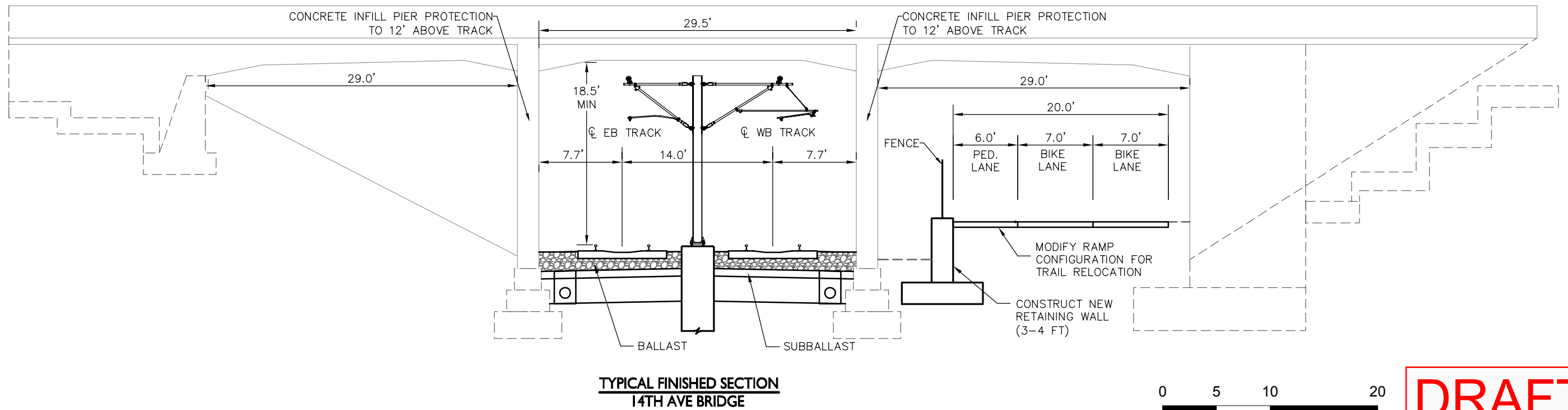
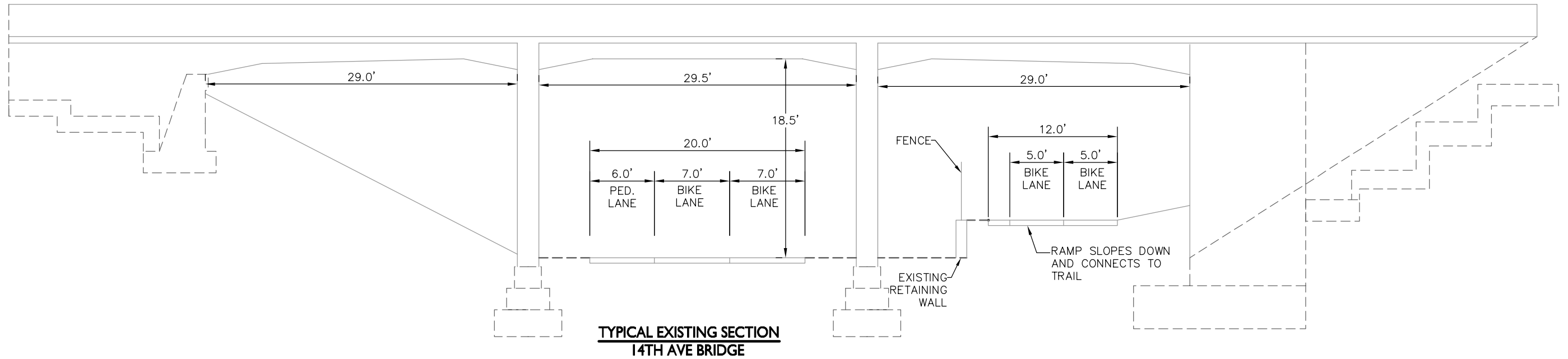


**MIDTOWN CORRIDOR  
ALTERNATIVES ANALYSIS**  
GREENWAY BRIDGES  
TYPICAL SECTION - CHICAGO AVE

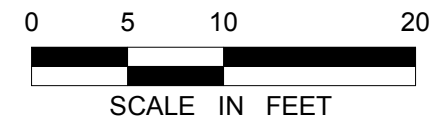
SHEET NO.  
18  
21



K:\TWC\_Transit\160528015\_MIDTOWN\_AA\CAD\Plan Sheets\MG\_SECT.dwg October 30, 2013 - 3:48pm



NOTE:  
BRIDGE SECTION SIMILAR TO:  
BLAISDELL, STEVENS, PORTLAND, OAKLAND, ELLIOT, 10TH, 11TH, AND 13TH AVE



**DRAFT**  
FOR DISCUSSION  
ONLY 10/29/2013

No.	Date	Revisions	App.	DRAWING NAME MG_SECT.dwg
				DESIGNED BY: EPS
				DRAWN BY: EPS
				CHECKED BY: LMR
				DATE: 10/30/2013
				PROJECT NO. 160528015



ENGINEERS  
PLANNERS  
DESIGNERS



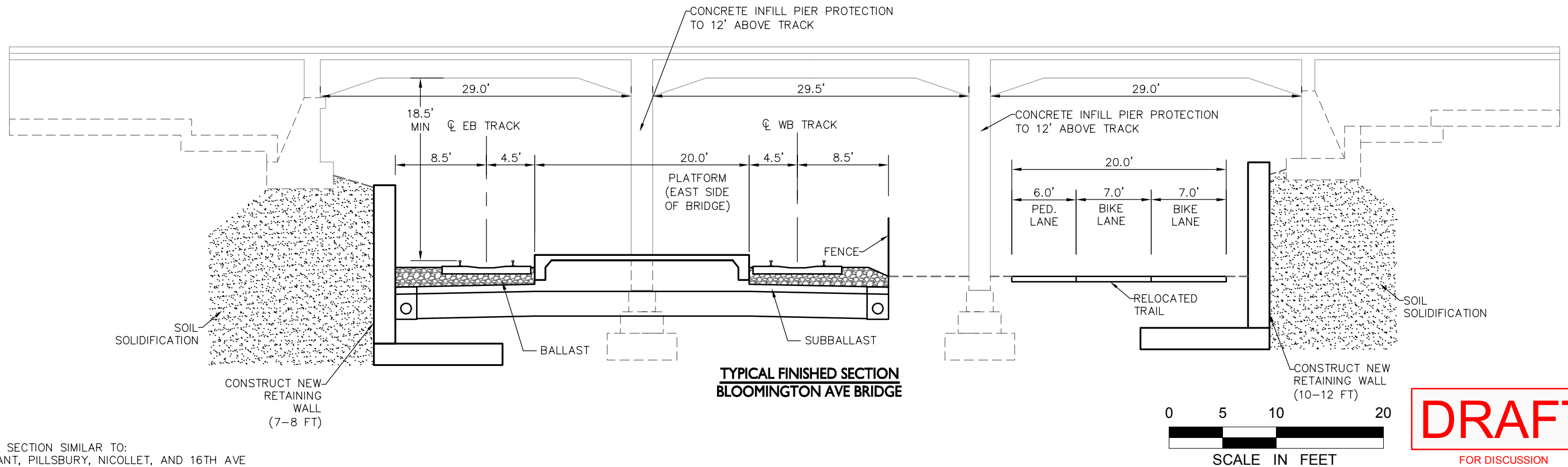
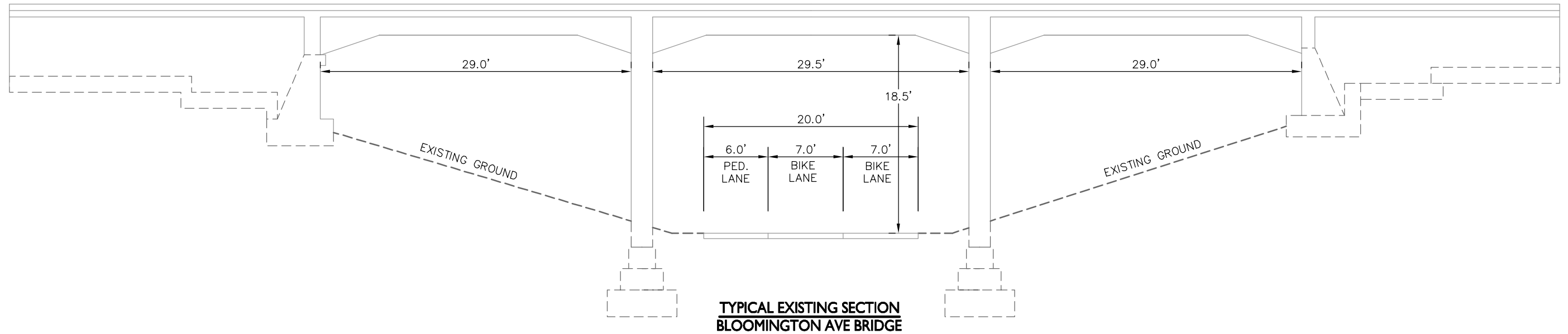
**MIDTOWN CORRIDOR  
ALTERNATIVES ANALYSIS**  
GREENWAY BRIDGES  
TYPICAL SECTION - 14TH AVE

SHEET NO.  
19  
21





K:\TWC\_Transit\160528015\_MIDTOWN\_AA\CAD\Plan Sheets\MG\_SECT.dwg October 30, 2013 - 3:49pm



NOTE:  
BRIDGE SECTION SIMILAR TO:  
PLEASANT, PILLSBURY, NICOLLET, AND 16TH AVE

**DRAFT**  
FOR DISCUSSION  
ONLY 10/29/2013

No.	Date	Revisions	App.	DRAWING NAME MG_SECT.dwg
				DESIGNED BY: EPS
				DRAWN BY: EPS
				CHECKED BY: LMR
				DATE: 10/30/2013
				PROJECT NO. 160528015



**MIDTOWN CORRIDOR  
ALTERNATIVES ANALYSIS**

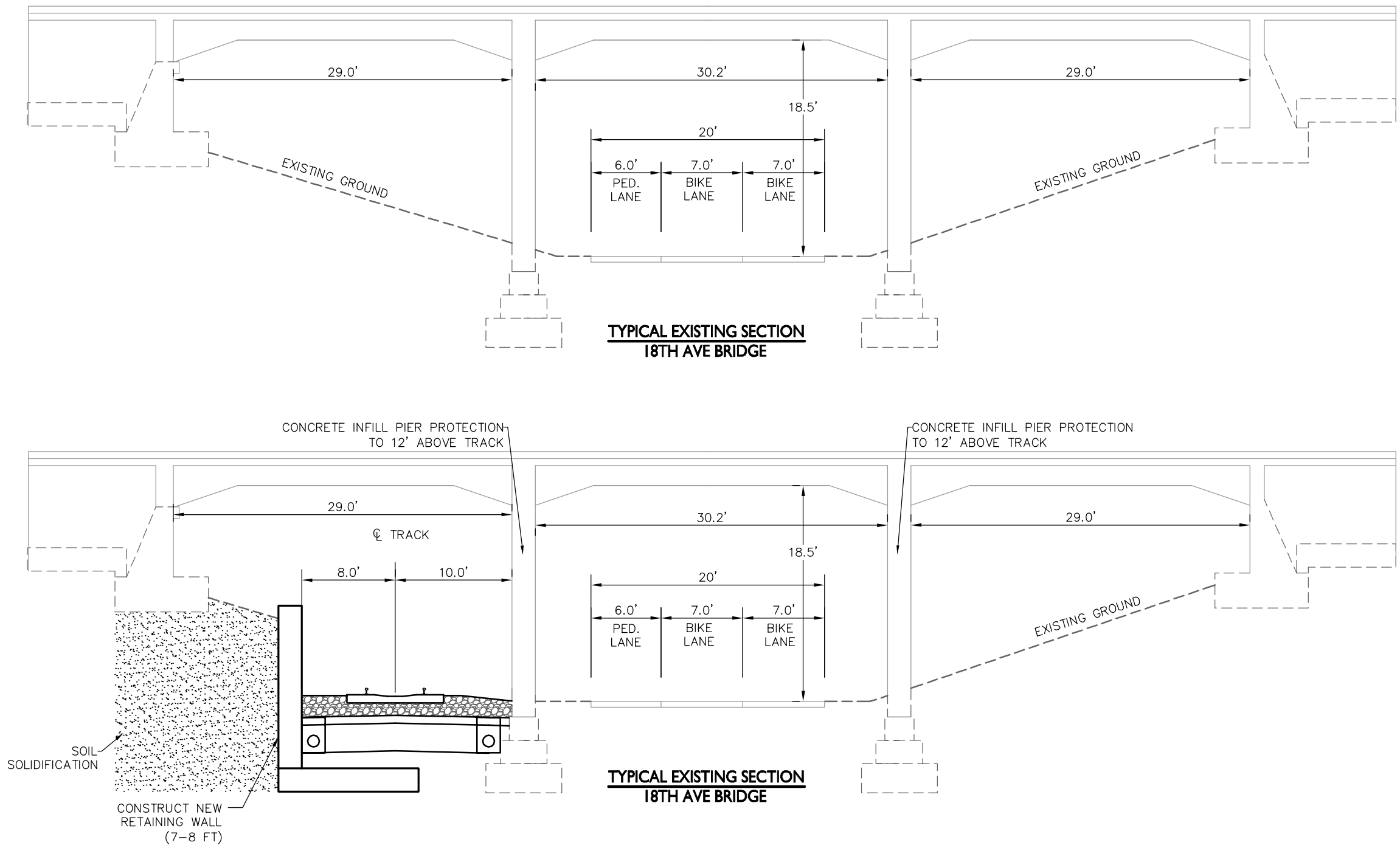
GREENWAY BRIDGES  
TYPICAL SECTION - BLOOMINGTON AVE

SHEET NO.  
20  
21

midtowntransitway.org



K:\TWC\_Transit\160528015\_MIDTOWN\_AA\CAD\Plan Sheets\MG\_SECT.dwg October 30, 2013 - 3:49pm



NOTE:  
BRIDGE SECTION SIMILAR TO:  
FREMONT, COLUMBUS, 12TH, 15TH, 17TH, 18TH, AND CEDAR AVE



**DRAFT**  
FOR DISCUSSION  
ONLY 10/29/2013

No.	Date	Revisions	App.	DRAWING NAME MG_SECT.dwg
				DESIGNED BY: EPS
				DRAWN BY: EPS
				CHECKED BY: LMR
				DATE: 10/30/2013
				PROJECT NO. 160528015



**MIDTOWN CORRIDOR  
ALTERNATIVES ANALYSIS**  
GREENWAY BRIDGES  
TYPICAL SECTION - 18TH AVE

SHEET NO.  
21  
21